

LEMENT 6OND 10G
VARIABLE DENSITY

COMPANY		TETON ENERGY COMPANY INC.	
WELL	GARFIELD TWO FEDERAL 26-3		
FIELD	WILDCAT		
COUNTY	GARFIELD	STATE	COLORADO
LOCATION N APPROX. W/2 SW	API Serial No. <i>Wd Sw 12</i>		Other Services: NONE
Sec. 26	Twp. 7S	Rge. 91W	

Attachment Datum: <u>CL</u> , Elev. <u>7900</u> Measured From <u>K8</u> , <u>13</u> Ft. Above Perm. Datum Drilling Measured From: <u>K8</u>		Elev. <u>7913</u> D.F. <u>CL</u> , <u>7900</u>	
Date	6/21/80	Casing Fluid	FRESH WATER
Run No.	ONE	Fluid Level	FULL
Depth - Driller	7432	Max. Rec. Temp.	220 °F
Depth - Logger	7285	Est. Cement Top	6166
2m. Log Interval	7278	Unit	5749
10m. Log Interval	7278	District	VERNAL
Open Hole Size	7 7/8	Recorded By	SELTIGMAN
USING REC.		Witnessed by	LUDWICK
Surface String	15 3/8	Type Joint	TOP
Motor String			SURF.
Tool String	52		SURF.
	15.5		TD
Liner			

PRIMARY CEMENTING DATA			
STRING	Surface	Protection	Liner
Vol. of cement			
Wt. of cement			
Excessive			
Remender			
Wt. of slurry			
Mixer: type			
Time fluid in case			

RECEIVED JUL 8 1980 COLL. BY: GRS CONS. DEPT.

The well name, location and borehole reference data were furnished by the customer.

[illegible]

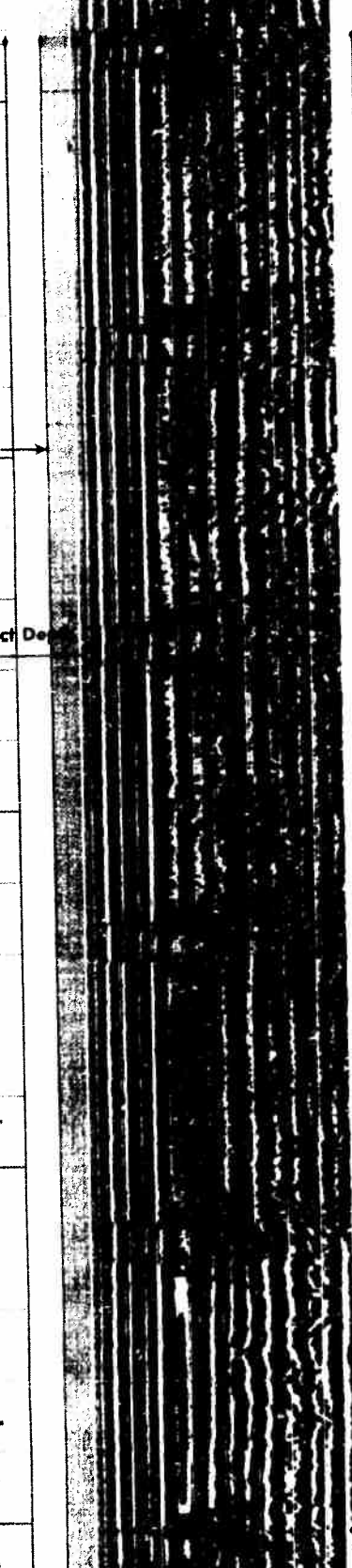
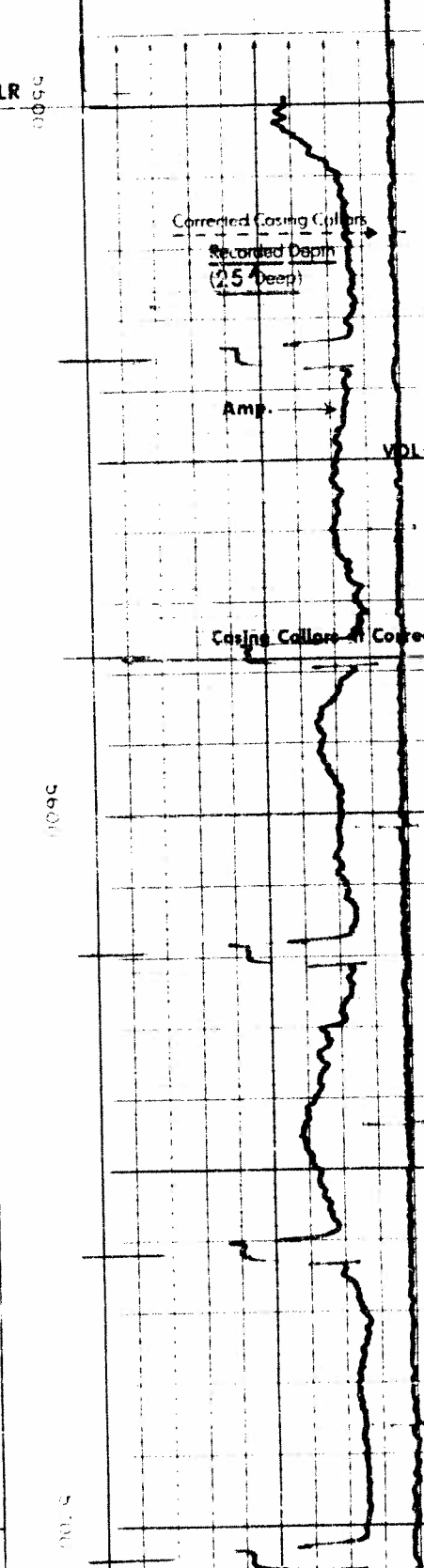
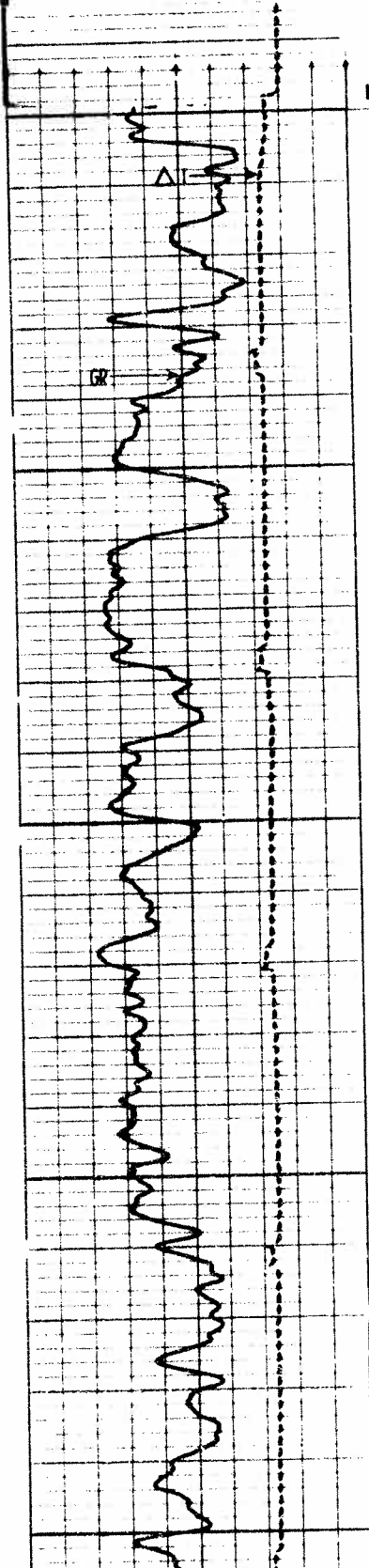
All interpretations are or inferences based on electrical or other measurements and we cannot, and do not guarantee the accuracy or correctness of any interpretations, and we shall not, except in the case of gross or willful negligence on our part, be liable or responsible for any loss, cost, damages or expenses incurred or sustained by anyone resulting from any interpretation made by any of our officers, agents or employees. These interpretations are also subject to Clause 4 of our General Terms and Conditions as set out in our current Price Schedule.

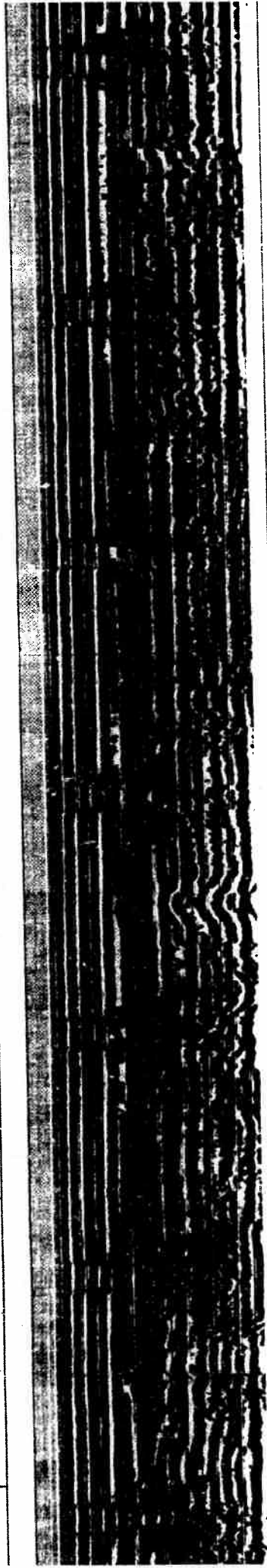
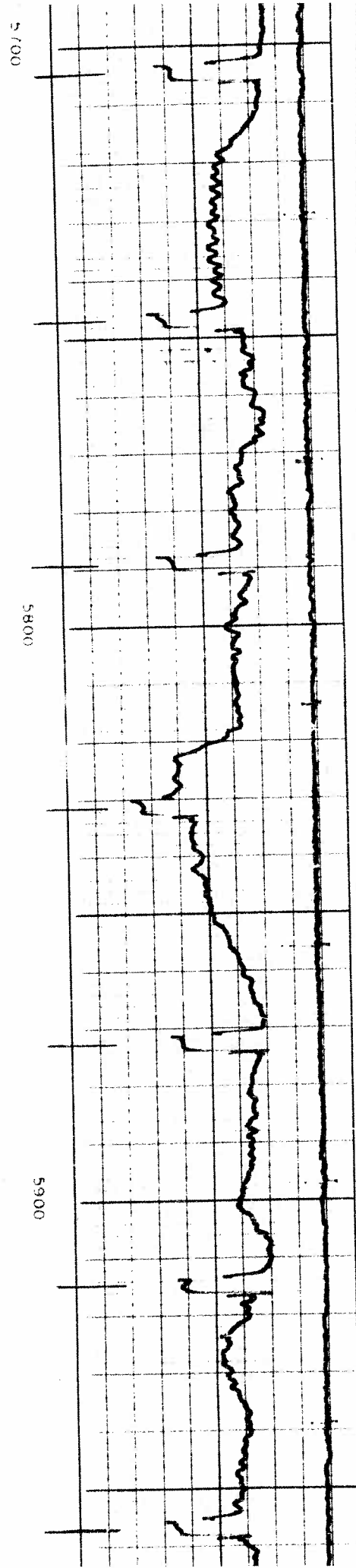
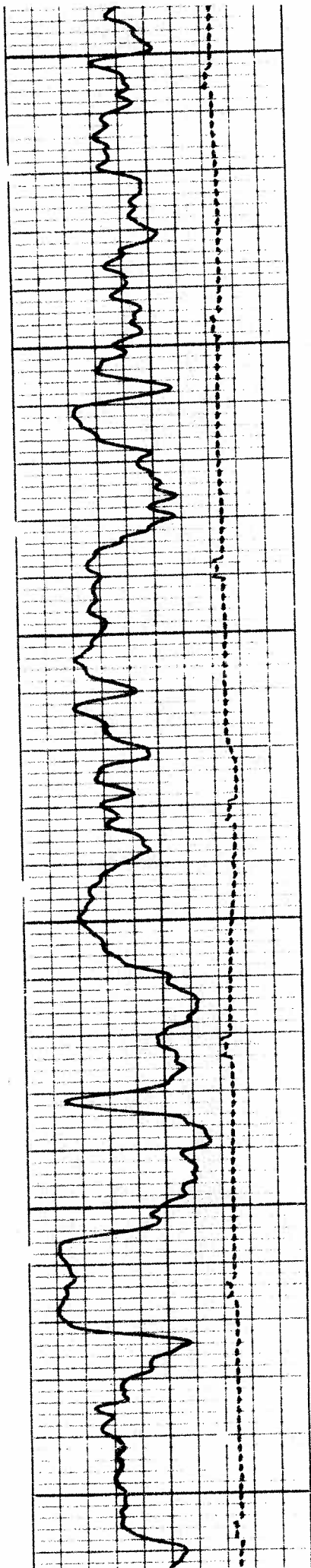
VARIABLE DENSITY

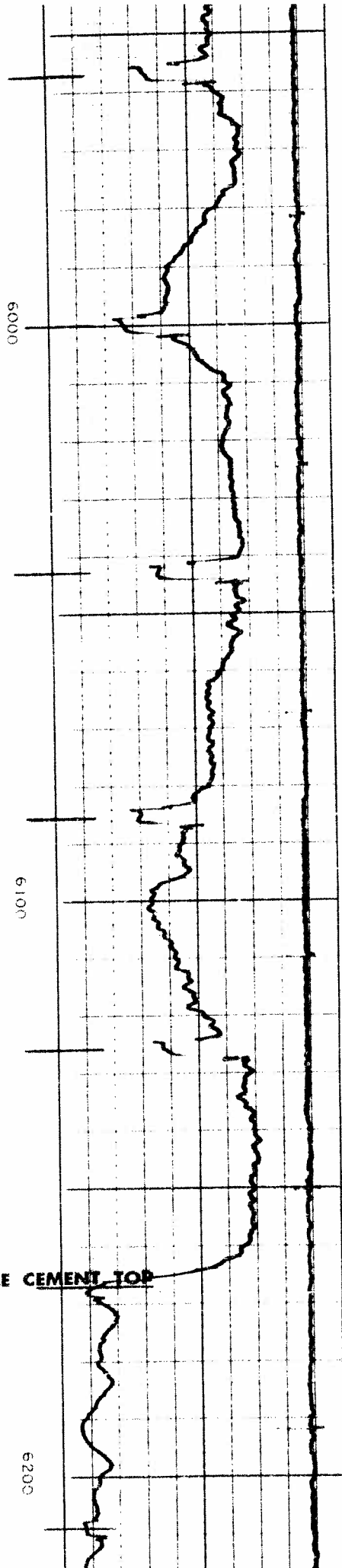
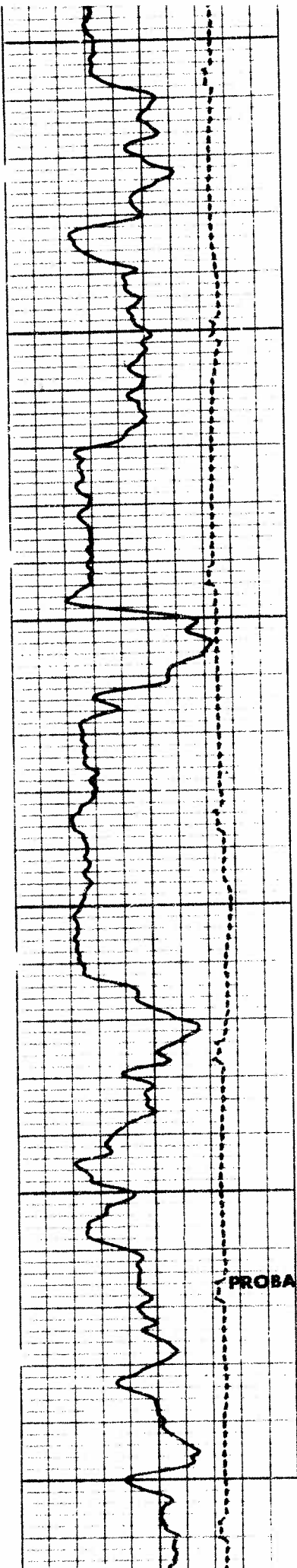
TRANSIT TIME	
MICROSECONDS	SPACING
400	200
GAMMA RAY	
API UNITS	
150	300

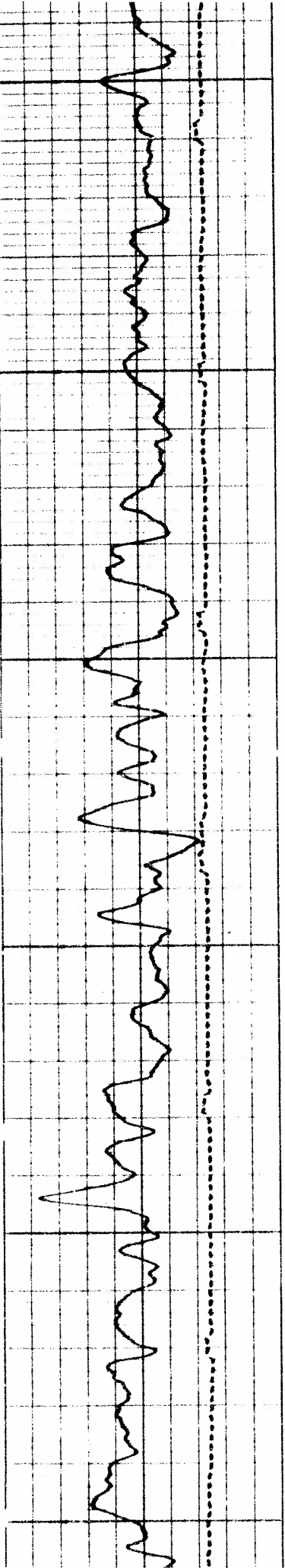
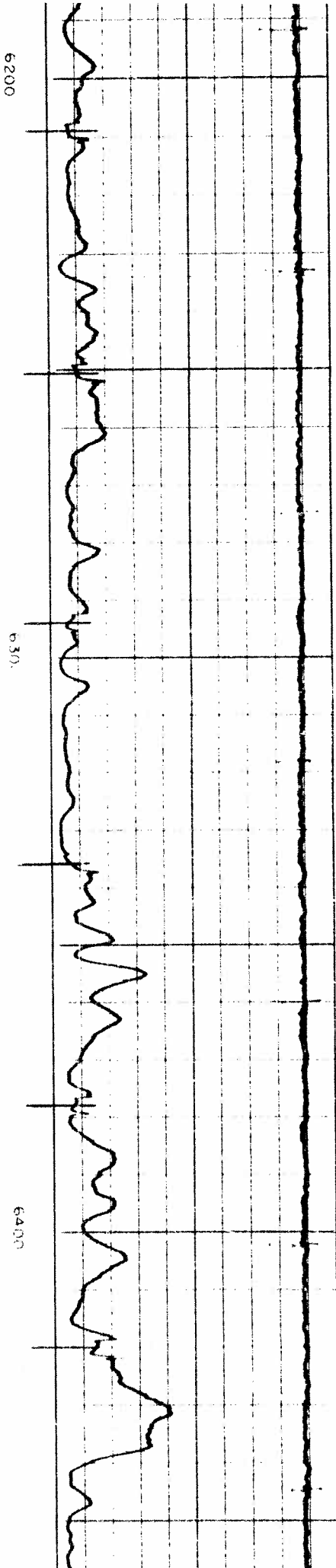
CASING BOND
MILLIVOLTS
0
100
0
Casing Collars Corrected Depth

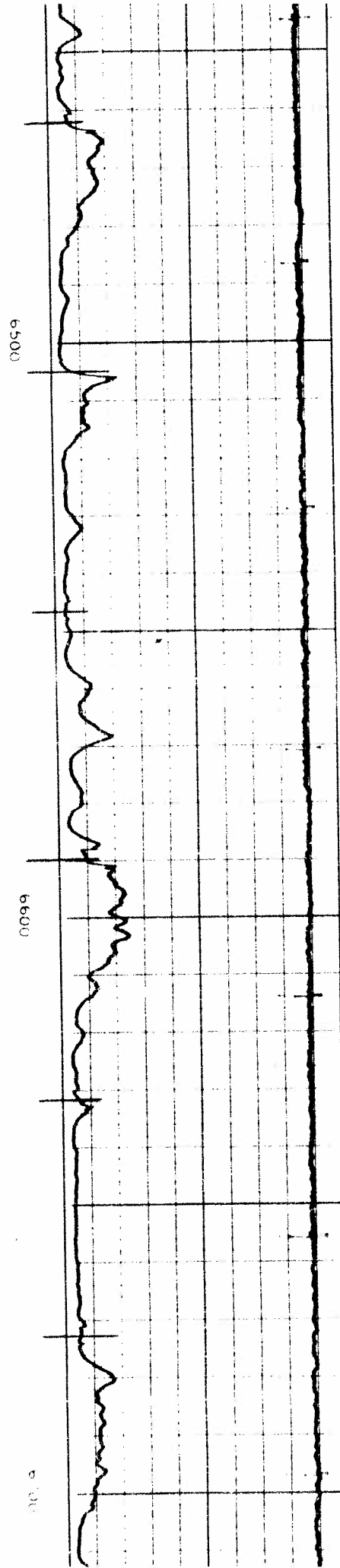
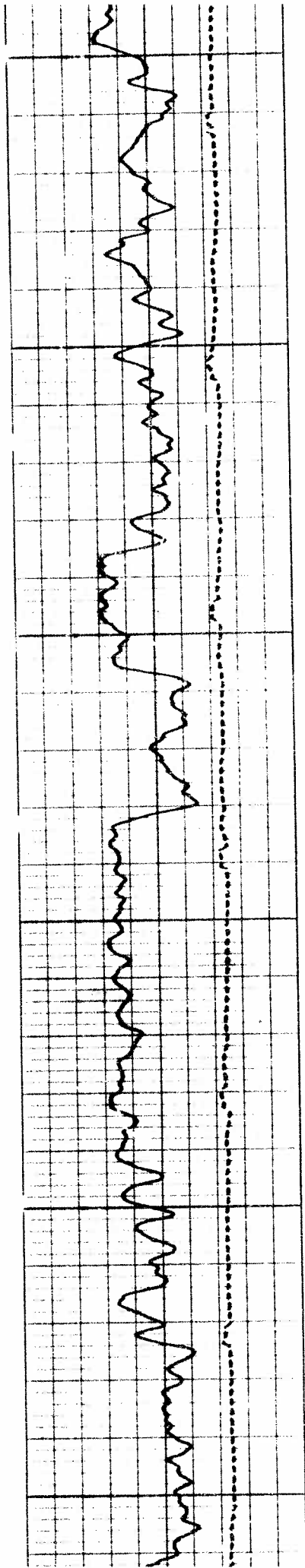
VARIABLE DENSITY
MICROSECONDS
20
SPACING
120

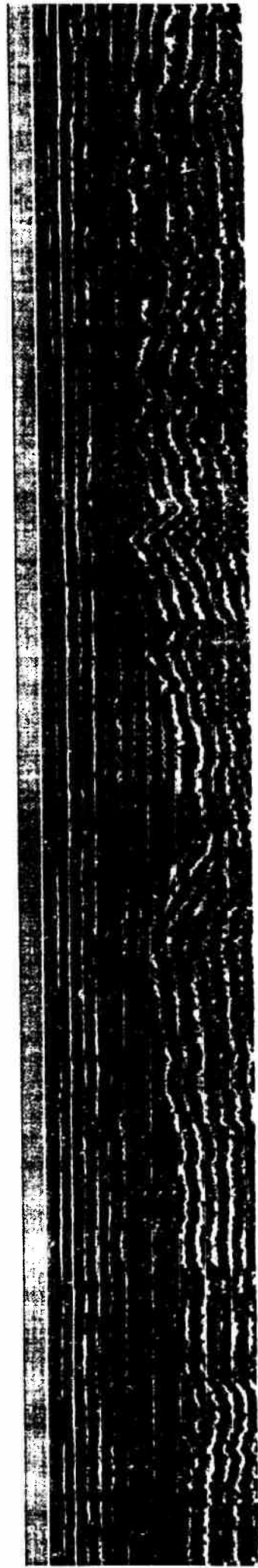
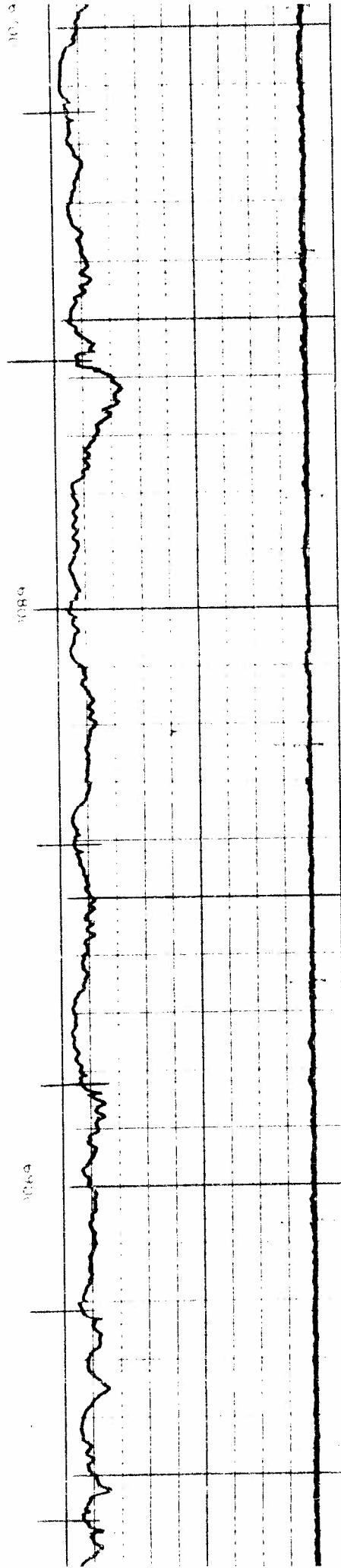
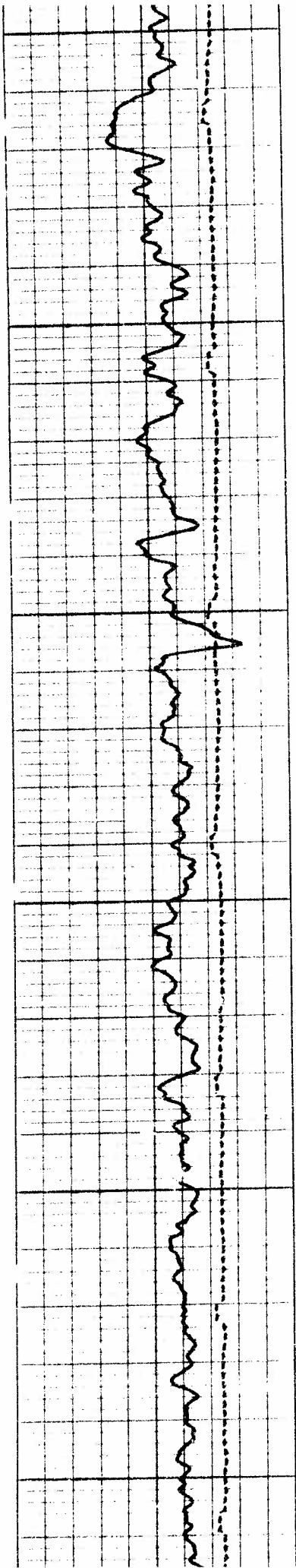


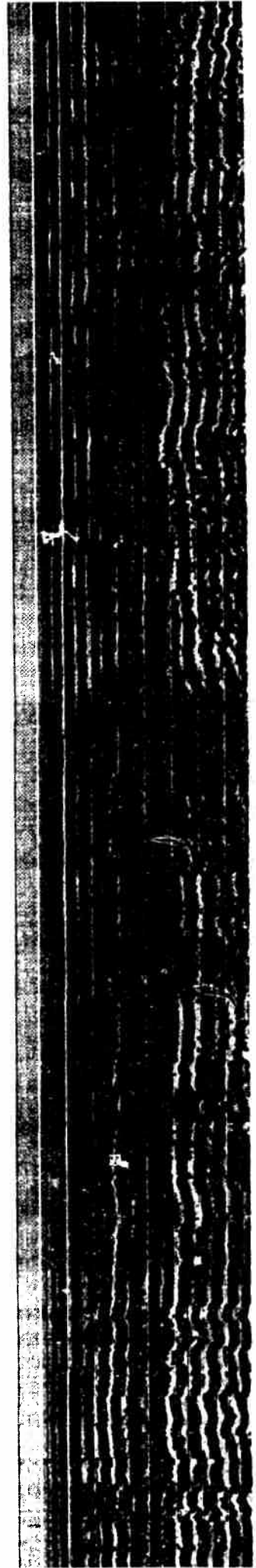
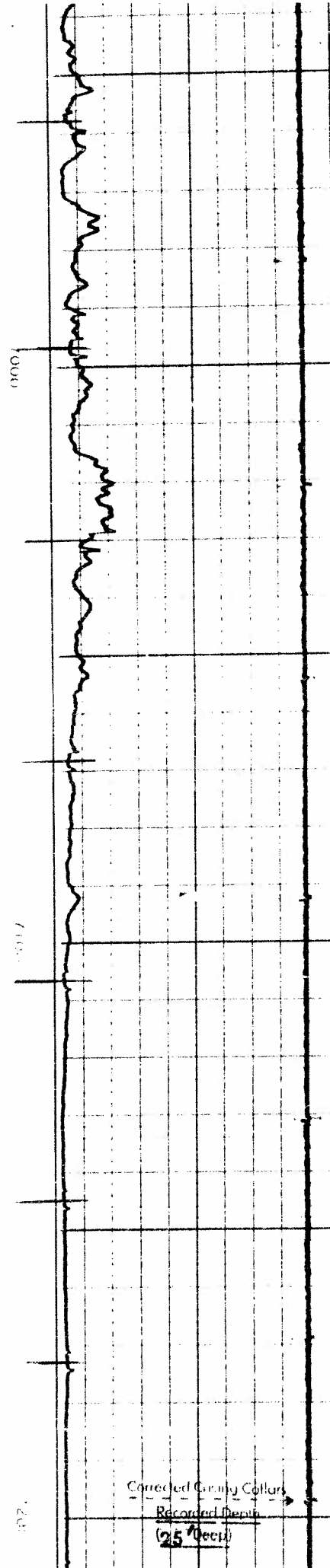
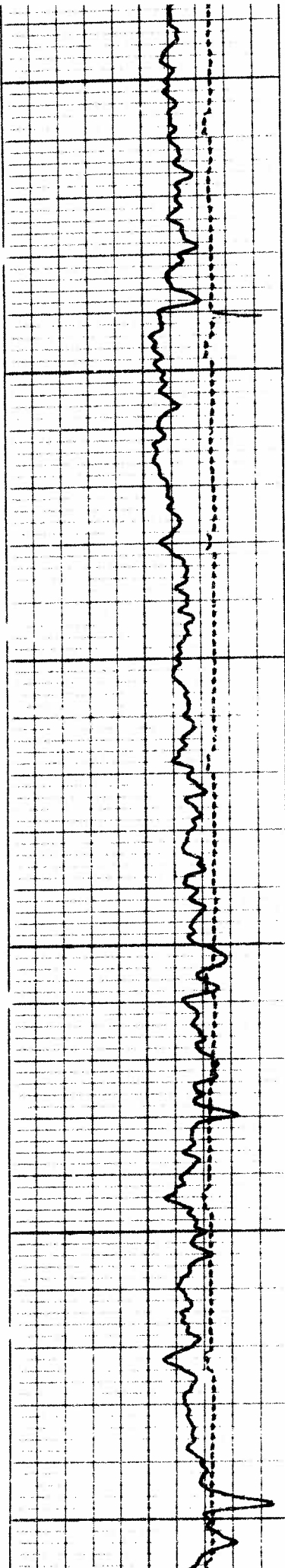




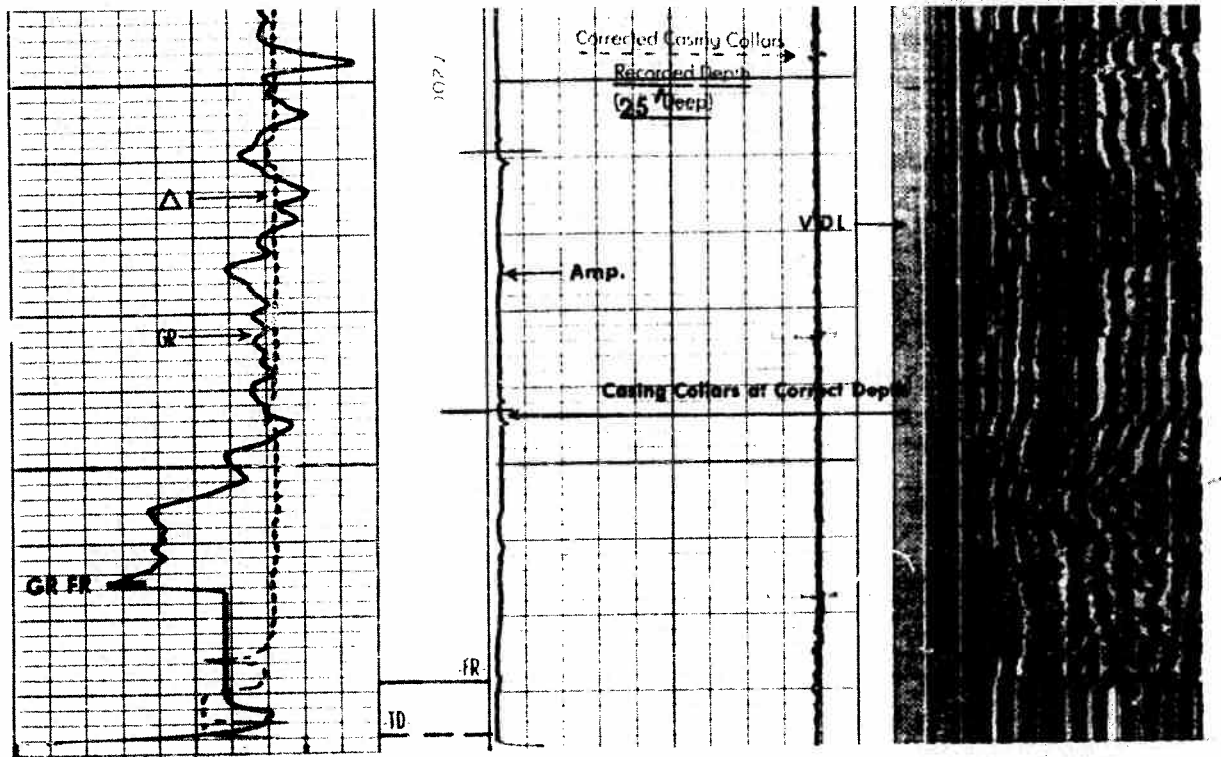




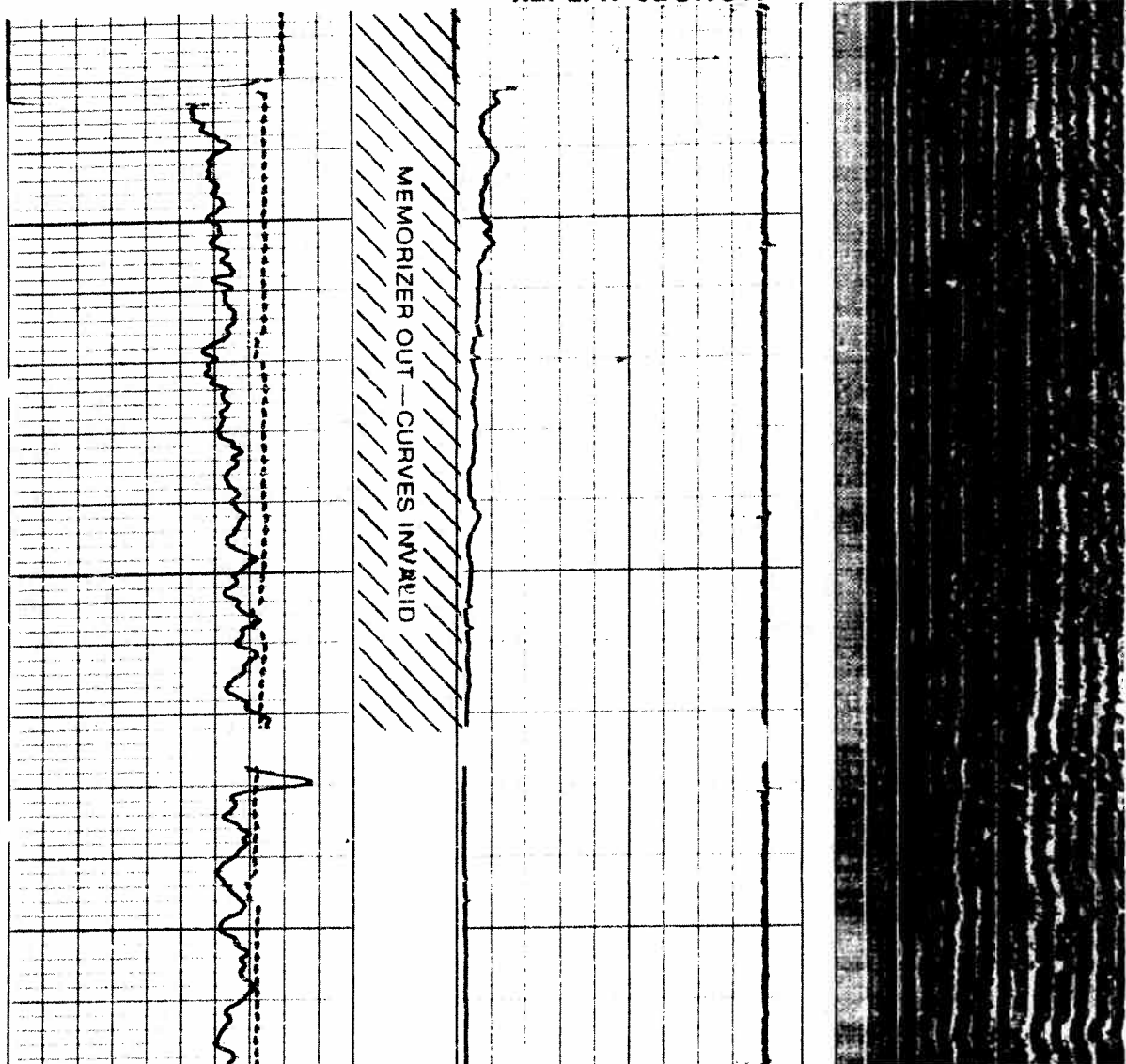


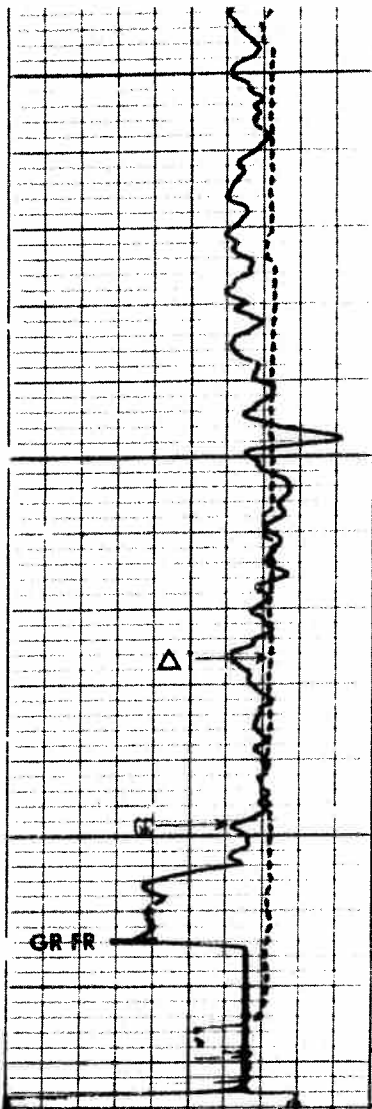


Corrected Gravity Collar
Recorded Depth
(25 feet)



REPEAT SECTION





7200

Corrected Casing Collars
Recorded Depth
(25' Deep)

Amp.

vbl

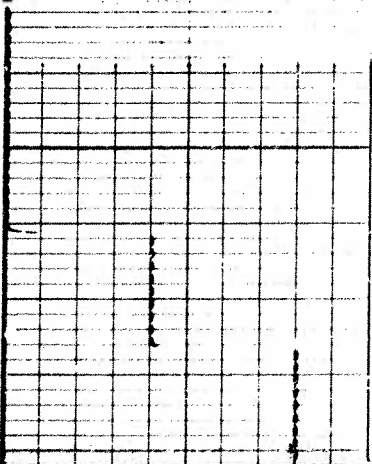
TD

TRANSIT TIME	
MICROSECONDS 3	SPACING 200
GAMMA RAY API UNITS	
0	100
150	300

DEPTH

Casing Collars Corrected Depth	CASING BOND MILLIVOLTS	VARIABLE DENSITY
0	100	MICROSECONDS 5' SPACING 200 1200

Calibration after Survey



4

3

