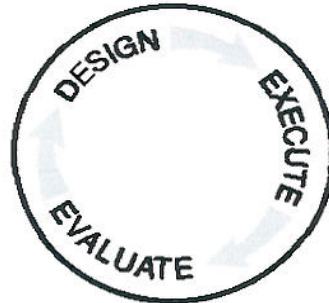


STATE Schlumberger

Schlumberger



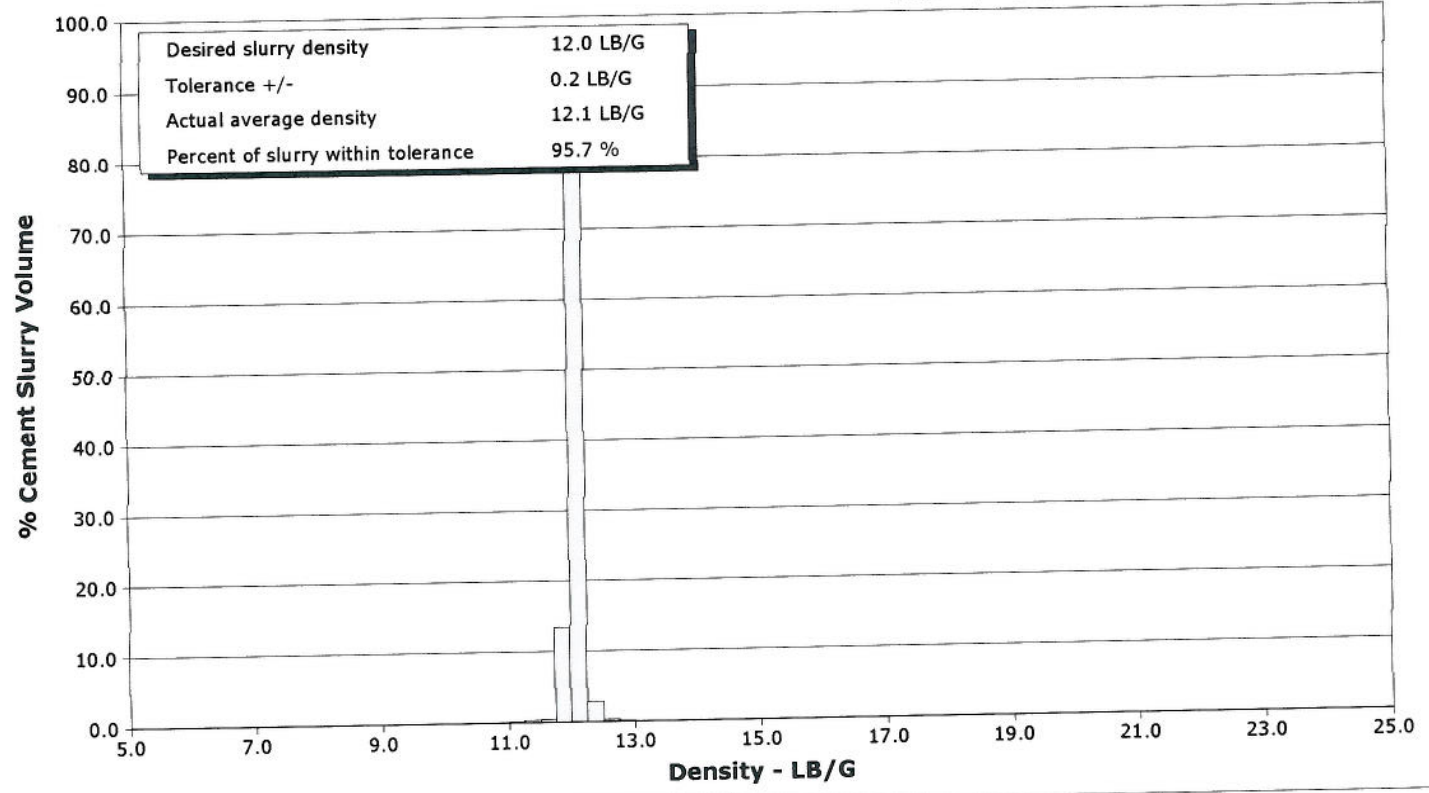
DATE : May 14, 2011
SERVICE TYPE : SQUEEZE
CLIENT : ENCANA
TREATMENT # : BRWT-00022
WELL : FEDERAL 25-9
RIG : WORKOVER
LOCATION : PH25
COMPANY MAN : SCOTT SANDERS

PREPARED BY : JEFF PATTERSON
TITLE : FIELD SPECIALIST-1
CELL # : 970-270-6976
DISTRICT : GJCO
SALES CONTACT : KENT DONNER
PHONE # : 970-314-3470

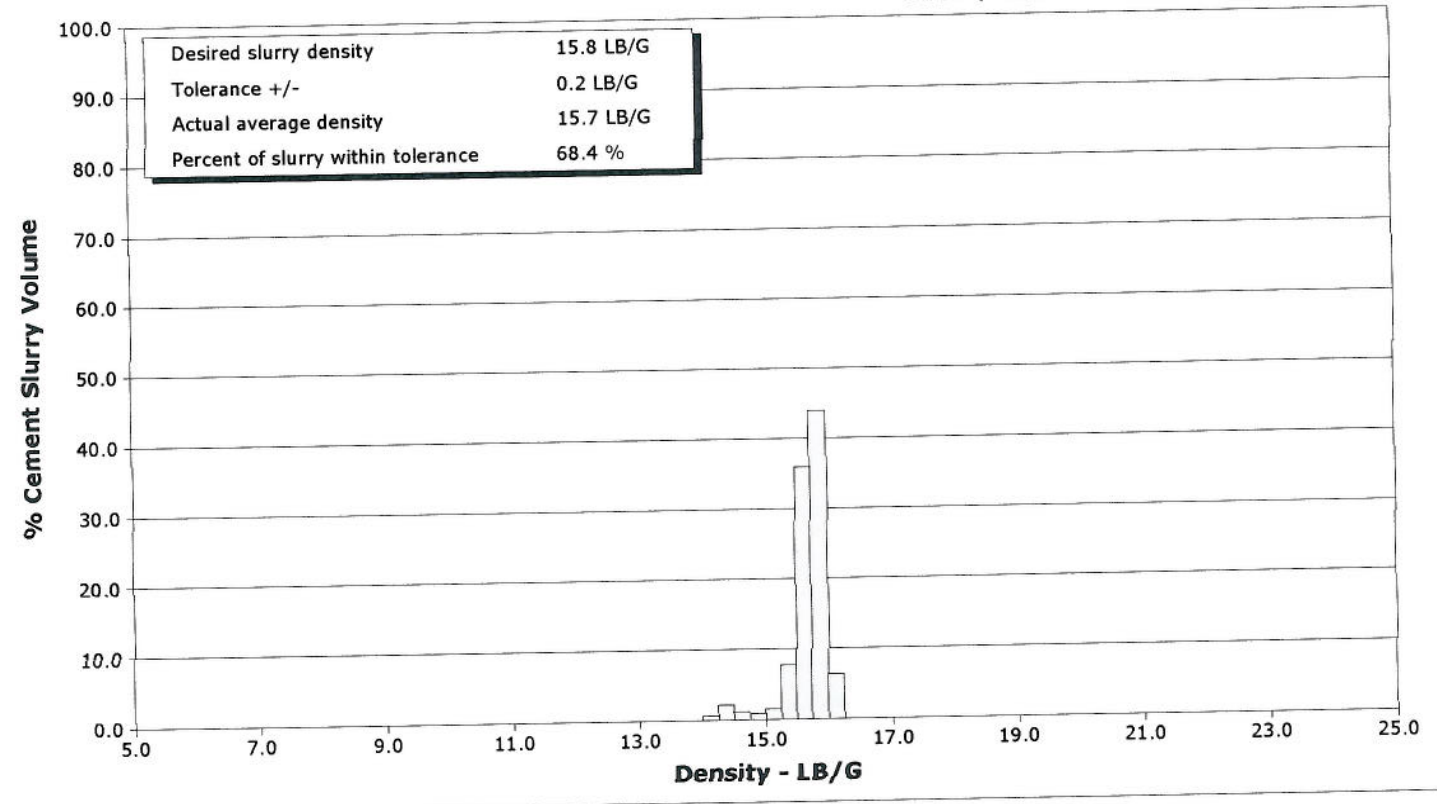


Well	FEDERAL 25-9	Client	ENCANA
Field	HIGH MESA	SIR No.	BRWT-00022
Engineer	JEFF PATTERSON	Job Type	SQUEEZE
Country	United States	Job Date	05-14-2011

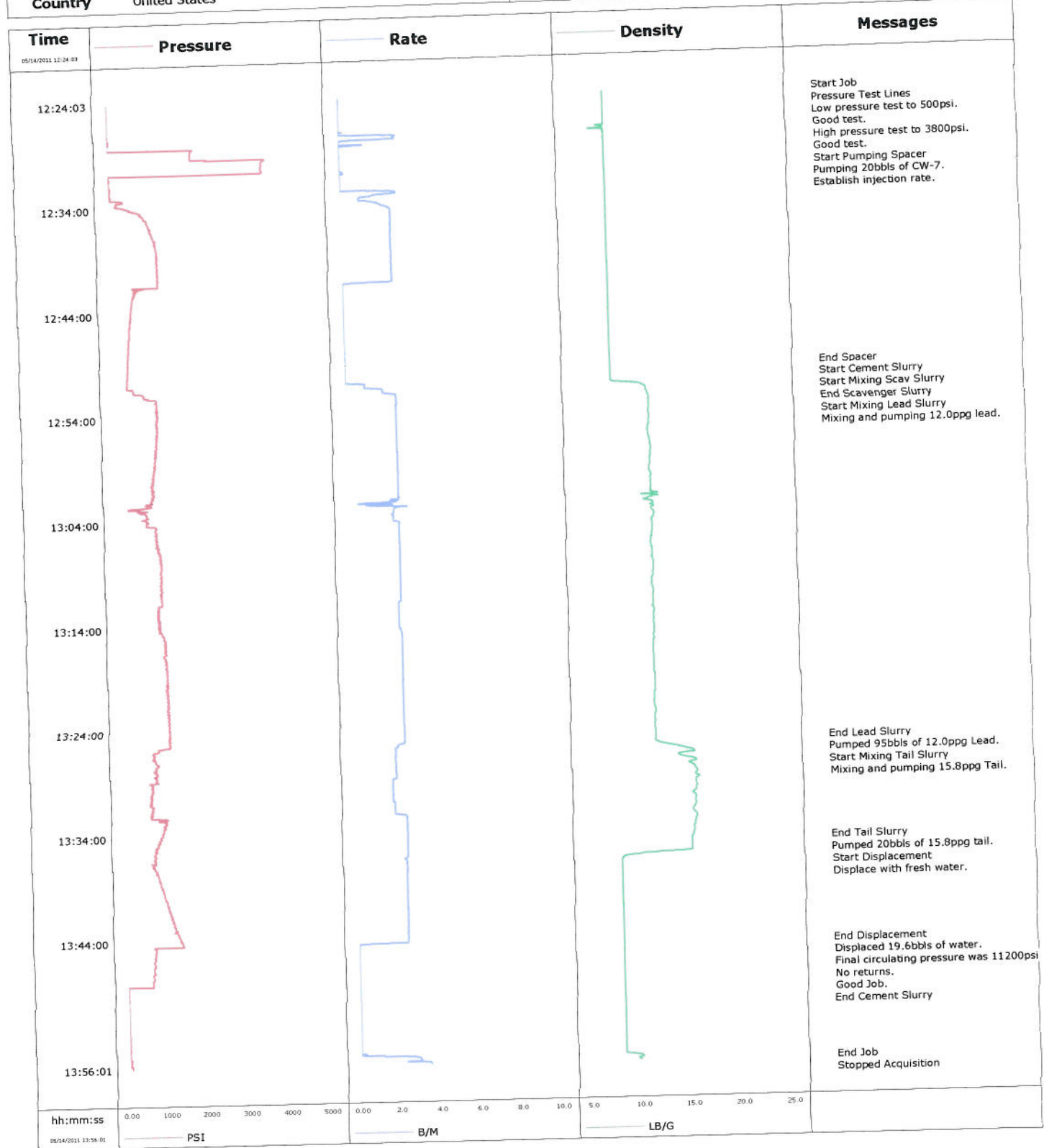
Lead Slurry - 05/14/2011 12:52:41 to 05/14/2011 13:25:34



Tail Slurry - 05/14/2011 13:26:49 to 05/14/2011 13:35:05



Well	FEDERAL 25-9	Client	ENCANA
Field	HIGH MESA	SIR No.	BRWT-00022
Engineer	JEFF PATTERSON	Job Type	SQUEEZE
Country	United States	Job Date	05-14-2011



Customer ENCANA				Job Number BRWT-00022			
Well FEDERAL 25-9 FEDERAL 25-9		Location (legal) PH25		Schlumberger Location GRAND JUNCTION, COLORADO		Job Start May/14/2011	
Field HIGH MESA		Formation Name/Type Shale		Deviation		Bit Size	Well MD 5150.0 ft
County GARFIELD		State/Province Colorado		BHP	BHST 150 degF	BHCT 128 degF	Pore Press. Gradient
Well Master 0631162222		API/UWI					
Rig Name WORKOVER		Drilled For Gas	Service Via Land	Casing/Liner			
Offshore Zone		Well Class Old	Well Type Development	Depth, ft	Size, in	Weight, lb/ft	Grade
Drilling Fluid Type		Max. Density	Plastic Viscosity	5150.0	4.500	11.6	N80
Service Line Cementing		Job Type SQUEEZE		0.0	0.000	0.0	8RD
Max. Allowed Tub. Press 2500 psi		Max. Allowed Ann. Press	WH Connection 2 3/8" 4.7# T/S	Tubing/Drill Pipe			
Service Instructions SQUEEZE CASING THROUGH TUBING. 300sks 12.0ppg TXI Lead. 100sks 15.8ppg Tail.				Depth, ft	Size, in	Weight, lb/ft	Grade
				5073.0	2.375	4.7	N/A
				0.0	0.000	0.0	N/A
				Perforations/Open Hole			
				Top,	Bottom,	No. of Shots	Total Interval
							Diameter
				Treat Down Tubing	Displacement 19.6 bbl	Packer Type	Packer Depth
				Tubing Vol.	Casing Vol.	Annular Vol.	Openhole Vol.
Casing/Tubing Secured <input checked="" type="checkbox"/>		1 Hole Vol. Circulated prior to Cement <input checked="" type="checkbox"/>		Casing Tools		Squeeze Job	
Lift Pressure		Pipe Rotated <input type="checkbox"/>		Shoe Type		Squeeze Type	
Pipe Reciprocated <input type="checkbox"/>		Pipe Reciprocated <input type="checkbox"/>		Shoe Depth		Tool Type	
No. Centralizers		Top Plugs	Bottom Plugs	Stage Tool Type		Tool Depth	
Cement Head Type Single				Stage Tool Depth		Tail Pipe Size	
Job Scheduled For May/14/2011		Arrived on Location May/14/2011	Leave Location May/14/2011	Collar Type		Tail Pipe Depth	
				Collar Depth		Sqz. Total Vol.	
Date	Time 24-hr clock	Treating Pressure PSI	Flow Rate B/M	Density LB/G	Volume BBL	Message	
05/14/2011	11:26:47					Started Acquisition	
05/14/2011	12:24:03	-1	0.0	8.36	0.0		
05/14/2011	12:24:05					Start Job	
05/14/2011	12:24:05	-0	0.0	8.36	0.0		
05/14/2011	12:24:07					Pressure Test Lines	
05/14/2011	12:24:07	-0	0.0	8.36	0.0		
05/14/2011	12:24:09					Low pressure test to 500psi.	
05/14/2011	12:24:09					Good test.	
05/14/2011	12:24:09					High pressure test to 3800psi.	
05/14/2011	12:24:09	-1	0.0	8.36	0.0		
05/14/2011	12:24:10					Good test.	
05/14/2011	12:24:10	-0	0.0	8.36	0.0		
05/14/2011	12:24:12					Start Pumping Spacer	
05/14/2011	12:24:12	-0	0.0	8.36	0.0		
05/14/2011	12:24:15					Pumping 20bbbls of CW-7.	
05/14/2011	12:24:15					Establish injection rate.	
05/14/2011	12:24:15	-0	0.0	8.36	0.0		
05/14/2011	12:24:17	-0	0.0	8.36	0.0		
05/14/2011	12:24:47	-0	0.0	8.36	0.0		
05/14/2011	12:25:17	-0	0.0	8.36	0.0		
05/14/2011	12:25:47	-3	0.0	8.36	0.0		

Well		Field	Job Start	Customer	Job Number	
FEDERAL 25-9 FEDERAL 25-9		HIGH MESA	May/14/2011	ENCANA	BRWT-00022	
Date	Time 24-hr clock	Treating Pressure PSI	Flow Rate B/M	Density LB/G	Volume BBL	Message
05/14/2011	12:26:47	-4	0.0	8.36	0.0	
05/14/2011	12:27:17	-3	0.0	8.36	0.0	
05/14/2011	12:27:47	11	2.7	8.34	0.5	
05/14/2011	12:28:17	-16	0.0	8.38	1.2	
05/14/2011	12:28:47	2051	0.0	8.38	1.3	
05/14/2011	12:29:17	2045	0.0	8.38	1.3	
05/14/2011	12:29:47	3808	0.0	8.38	1.3	
05/14/2011	12:30:17	3796	0.0	8.38	1.3	
05/14/2011	12:30:47	3816	0.0	8.38	1.3	
05/14/2011	12:31:17	24	0.0	8.38	1.3	
05/14/2011	12:31:47	9	0.0	8.38	1.3	
05/14/2011	12:32:17	12	0.0	8.38	1.3	
05/14/2011	12:32:47	9	0.0	8.38	1.3	
05/14/2011	12:33:17	316	1.6	8.36	2.3	
05/14/2011	12:33:47	215	1.0	8.37	2.9	
05/14/2011	12:34:17	626	2.2	8.38	3.7	
05/14/2011	12:34:47	833	2.5	8.38	4.9	
05/14/2011	12:35:17	903	2.5	8.38	6.2	
05/14/2011	12:35:47	969	2.5	8.38	7.4	
05/14/2011	12:36:17	1005	2.5	8.38	8.6	
05/14/2011	12:36:47	1058	2.5	8.38	9.9	
05/14/2011	12:37:17	1108	2.4	8.38	11.1	
05/14/2011	12:37:47	1121	2.4	8.38	12.3	
05/14/2011	12:38:17	1142	2.5	8.38	13.5	
05/14/2011	12:38:47	1155	2.5	8.37	14.8	
05/14/2011	12:39:17	1157	2.5	8.37	16.0	
05/14/2011	12:39:47	1142	2.5	8.38	17.2	
05/14/2011	12:40:17	1155	2.5	8.38	18.4	
05/14/2011	12:40:47	1147	2.5	8.38	19.7	
05/14/2011	12:41:17	1143	2.5	8.37	20.9	
05/14/2011	12:41:47	617	0.0	8.38	21.5	
05/14/2011	12:42:17	532	0.0	8.38	21.5	
05/14/2011	12:42:47	501	0.0	8.37	21.5	
05/14/2011	12:43:17	484	0.0	8.37	21.5	
05/14/2011	12:43:47	467	0.0	8.37	21.5	
05/14/2011	12:44:17	455	0.0	8.37	21.5	
05/14/2011	12:44:47	442	0.0	8.37	21.5	
05/14/2011	12:45:17	431	0.0	8.37	21.5	
05/14/2011	12:45:47	418	0.0	8.37	21.5	
05/14/2011	12:46:17	407	0.0	8.37	21.5	
05/14/2011	12:46:47	397	0.0	8.37	21.5	
05/14/2011	12:47:17	388	0.0	8.37	21.5	
05/14/2011	12:47:47	384	0.0	8.37	21.5	
05/14/2011	12:48:17	367	0.0	8.37	21.5	
05/14/2011	12:48:47	356	0.0	8.37	21.5	
05/14/2011	12:49:17	348	0.0	8.37	21.5	
05/14/2011	12:49:47	336	0.0	8.37	21.5	
05/14/2011	12:50:04					End Spacer
05/14/2011	12:50:04	330	0.0	8.37	21.5	
05/14/2011	12:50:17	326	0.0	8.37	21.5	
05/14/2011	12:50:47	317	0.0	8.36	21.5	
05/14/2011	12:51:08					Start Cement Slurry
05/14/2011	12:51:08	368	0.2	8.36	21.5	
05/14/2011	12:51:11					Start Mixing Scav Slurry

Well		Field	Job Start	Customer	Job Number	
FEDERAL 25-9 FEDERAL 25-9		HIGH MESA	May/14/2011	ENCANA	BRWT-00022	
Date	Time 24-hr clock	Treating Pressure PSI	Flow Rate B/M	Density LB/G	Volume BBL	Message
05/14/2011	12:51:17	468	1.0	8.38	21.7	
05/14/2011	12:51:47	725	1.8	10.66	22.3	
05/14/2011	12:52:17	1025	2.5	11.84	23.3	
05/14/2011	12:52:40					End Scavenger Slurry
05/14/2011	12:52:40	1045	2.5	11.96	24.2	
05/14/2011	12:52:41					Start Mixing Lead Slurry
05/14/2011	12:52:41	1041	2.5	11.97	24.3	
05/14/2011	12:52:45					Mixing and pumping 12.0ppg lead.
05/14/2011	12:52:45	1037	2.5	11.99	24.4	
05/14/2011	12:52:47	1044	2.5	12.01	24.5	
05/14/2011	12:53:17	1020	2.5	12.12	25.8	
05/14/2011	12:53:47	1061	2.5	12.12	27.0	
05/14/2011	12:54:17	1047	2.5	12.09	28.3	
05/14/2011	12:54:47	1022	2.5	12.09	29.5	
05/14/2011	12:55:17	1047	2.5	12.06	30.8	
05/14/2011	12:55:47	1025	2.5	12.03	32.0	
05/14/2011	12:56:17	1014	2.5	11.96	33.2	
05/14/2011	12:56:47	1005	2.5	12.02	34.5	
05/14/2011	12:57:17	985	2.5	12.12	35.7	
05/14/2011	12:57:47	973	2.5	12.18	37.0	
05/14/2011	12:58:17	961	2.5	12.15	38.2	
05/14/2011	12:58:47	943	2.5	12.09	39.5	
05/14/2011	12:59:17	911	2.5	12.06	40.7	
05/14/2011	12:59:47	901	2.5	12.02	42.0	
05/14/2011	13:00:17	883	2.5	12.08	43.2	
05/14/2011	13:00:47	879	2.5	12.06	44.5	
05/14/2011	13:01:17	907	2.5	12.09	45.7	
05/14/2011	13:01:47	851	2.5	12.07	47.0	
05/14/2011	13:02:17	692	2.1	12.79	48.2	
05/14/2011	13:02:47	520	1.2	11.70	49.0	
05/14/2011	13:03:17	738	2.2	12.08	50.2	
05/14/2011	13:03:47	753	2.2	12.13	51.3	
05/14/2011	13:04:17	848	2.2	12.36	52.4	
05/14/2011	13:04:47	947	2.5	12.06	53.6	
05/14/2011	13:05:17	966	2.5	12.14	54.9	
05/14/2011	13:05:47	950	2.5	12.14	56.1	
05/14/2011	13:06:17	926	2.5	12.06	57.4	
05/14/2011	13:06:47	1018	2.5	11.98	58.6	
05/14/2011	13:07:17	1010	2.5	12.01	59.9	
05/14/2011	13:07:47	1063	2.5	12.07	61.1	
05/14/2011	13:08:17	1053	2.5	12.03	62.4	
05/14/2011	13:08:47	1032	2.5	12.15	63.6	
05/14/2011	13:09:17	1054	2.5	12.18	64.9	
05/14/2011	13:09:47	1023	2.5	12.08	66.1	
05/14/2011	13:10:17	1026	2.5	12.00	67.4	
05/14/2011	13:10:47	1033	2.5	12.02	68.6	
05/14/2011	13:11:17	1061	2.5	12.08	69.8	
05/14/2011	13:11:47	1040	2.5	12.08	71.1	
05/14/2011	13:12:17	933	2.4	12.06	72.3	
05/14/2011	13:12:47	966	2.4	12.07	73.5	
05/14/2011	13:13:17	988	2.4	12.14	74.7	
05/14/2011	13:13:47	953	2.4	12.08	75.9	
05/14/2011	13:14:17	986	2.4	12.08	77.1	
05/14/2011	13:14:47	1090	2.5	12.13	78.3	

Well		Field		Job Start		Customer		Job Number	
FEDERAL 25-9 FEDERAL 25-9		HIGH MESA		May/14/2011		ENCANA		BRWT-00022	
Date	Time 24-hr clock	Treating Pressure PSI	Flow Rate B/M	Density LB/G	Volume BBL	Message			
05/14/2011	13:15:47	1098	2.5	12.02	80.8				
05/14/2011	13:16:17	1095	2.5	12.00	82.0				
05/14/2011	13:16:47	1081	2.5	11.97	83.3				
05/14/2011	13:17:17	1118	2.5	11.97	84.5				
05/14/2011	13:17:47	1107	2.5	12.02	85.8				
05/14/2011	13:18:17	1123	2.5	12.03	87.0				
05/14/2011	13:18:47	1152	2.5	12.00	88.2				
05/14/2011	13:19:17	1114	2.5	12.04	89.5				
05/14/2011	13:19:47	1151	2.5	12.07	90.7				
05/14/2011	13:20:17	1109	2.5	12.07	92.0				
05/14/2011	13:20:47	1161	2.5	12.06	93.2				
05/14/2011	13:21:17	1127	2.5	12.03	94.5				
05/14/2011	13:21:47	1109	2.5	11.99	95.7				
05/14/2011	13:22:17	1155	2.5	11.96	97.0				
05/14/2011	13:22:47	1151	2.5	12.05	98.2				
05/14/2011	13:23:17	1155	2.5	12.02	99.5				
05/14/2011	13:23:47	1166	2.5	12.00	100.7				
05/14/2011	13:24:17	1130	2.5	11.96	101.9				
05/14/2011	13:24:47	1156	2.5	12.00	103.2				
05/14/2011	13:25:17	1159	2.5	12.02	104.4				
05/14/2011	13:25:34					End Lead Slurry			
05/14/2011	13:25:34	892	2.2	11.98	105.1				
05/14/2011	13:25:37					Pumped 95bbbls of 12.0ppg Lead.			
05/14/2011	13:25:37	886	2.2	11.98	105.2				
05/14/2011	13:25:47	869	2.2	11.97	105.6				
05/14/2011	13:26:17	756	2.0	13.66	106.6				
05/14/2011	13:26:47	802	2.0	15.71	107.6				
05/14/2011	13:26:49					Start Mixing Tail Slurry			
05/14/2011	13:26:49	799	2.0	15.75	107.7				
05/14/2011	13:26:52					Mixing and pumping 15.8ppg Tail.			
05/14/2011	13:26:52	795	2.0	15.78	107.8				
05/14/2011	13:27:17	787	2.0	14.54	108.7				
05/14/2011	13:27:47	772	2.0	15.72	109.7				
05/14/2011	13:28:17	781	2.0	15.80	110.7				
05/14/2011	13:28:47	837	2.0	16.06	111.7				
05/14/2011	13:29:17	698	1.9	16.22	112.7				
05/14/2011	13:29:47	666	1.9	15.90	113.6				
05/14/2011	13:30:17	648	1.9	15.91	114.5				
05/14/2011	13:30:47	647	1.9	15.58	115.5				
05/14/2011	13:31:17	704	2.0	15.84	116.4				
05/14/2011	13:31:47	669	2.0	15.85	117.4				
05/14/2011	13:32:17	1041	2.5	15.57	118.4				
05/14/2011	13:32:47	1007	2.5	15.81	119.7				
05/14/2011	13:33:17	952	2.5	15.78	121.0				
05/14/2011	13:33:47	930	2.5	15.68	122.2				
05/14/2011	13:34:17	828	2.5	15.66	123.5				
05/14/2011	13:34:47	821	2.5	15.49	124.7				
05/14/2011	13:35:05					End Tail Slurry			
05/14/2011	13:35:05	762	2.5	15.37	125.5				
05/14/2011	13:35:12					Pumped 20bbbls of 15.8ppg tail.			
05/14/2011	13:35:12	738	2.5	15.37	125.8				
05/14/2011	13:35:17	760	2.5	15.37	126.0				
05/14/2011	13:35:47	743	2.5	15.35	127.3				
05/14/2011	13:36:10					Start Displacement			

Well		Field		Job Start		Customer		Job Number	
FEDERAL 25-9 FEDERAL 25-9		HIGH MESA		May/14/2011		ENCANA		BRWT-00022	
Date	Time 24-hr clock	Treating Pressure PSI	Flow Rate B/M	Density LB/G	Volume BBL	Message			
05/14/2011	13:36:13					Displace with fresh water.			
05/14/2011	13:36:13	728	2.5	15.34	128.4				
05/14/2011	13:36:17	723	2.5	14.67	128.5				
05/14/2011	13:36:47	698	2.5	8.52	129.8				
05/14/2011	13:37:17	747	2.5	8.41	131.0				
05/14/2011	13:37:47	790	2.5	8.39	132.2				
05/14/2011	13:38:17	844	2.5	8.39	133.5				
05/14/2011	13:38:47	879	2.5	8.39	134.7				
05/14/2011	13:39:17	918	2.5	8.39	135.9				
05/14/2011	13:39:47	960	2.5	8.39	137.2				
05/14/2011	13:40:17	1008	2.5	8.39	138.4				
05/14/2011	13:40:47	1027	2.5	8.38	139.6				
05/14/2011	13:41:17	1086	2.5	8.38	140.9				
05/14/2011	13:41:47	1096	2.5	8.38	142.1				
05/14/2011	13:42:17	1167	2.5	8.38	143.3				
05/14/2011	13:42:47	1195	2.5	8.38	144.6				
05/14/2011	13:43:17	1265	2.4	8.38	145.8				
05/14/2011	13:43:47	1318	2.5	8.38	147.0				
05/14/2011	13:44:17	1365	2.5	8.38	148.2				
05/14/2011	13:44:47	703	0.0	8.38	148.8				
05/14/2011	13:44:53					End Displacement			
05/14/2011	13:44:53	706	0.0	8.38	148.8				
05/14/2011	13:44:55					Displaced 19.6bbls of water.			
05/14/2011	13:44:55					Final circulating pressure was 11200psi.			
05/14/2011	13:44:55					No returns.			
05/14/2011	13:44:55					Good Job.			
05/14/2011	13:44:55	707	0.0	8.38	148.8				
05/14/2011	13:45:03					End Cement Slurry			
05/14/2011	13:45:03	680	0.0	8.38	148.8				
05/14/2011	13:45:17	688	0.0	8.38	148.8				
05/14/2011	13:45:47	677	0.0	8.38	148.8				
05/14/2011	13:46:17	671	0.0	8.38	148.8				
05/14/2011	13:46:47	651	0.0	8.38	148.8				
05/14/2011	13:47:17	629	0.0	8.38	148.8				
05/14/2011	13:47:47	614	0.0	8.38	148.8				
05/14/2011	13:48:17	-3	0.0	8.38	148.8				
05/14/2011	13:48:47	-1	0.0	8.38	148.8				
05/14/2011	13:49:17	-1	0.0	8.38	148.8				
05/14/2011	13:49:47	-1	0.0	8.38	148.8				
05/14/2011	13:50:17	-1	0.0	8.38	148.8				
05/14/2011	13:50:47	-1	0.0	8.38	148.8				
05/14/2011	13:51:17	-1	0.0	8.38	148.8				
05/14/2011	13:51:47	-1	0.0	8.38	148.8				
05/14/2011	13:52:17	-1	0.0	8.38	148.8				
05/14/2011	13:52:47	-1	0.0	8.38	148.8				
05/14/2011	13:53:17	1	0.0	8.38	148.8				
05/14/2011	13:53:47	1	0.0	8.38	148.8				
05/14/2011	13:54:17	1	0.0	8.38	148.8				
05/14/2011	13:54:47	-0	0.0	8.38	148.8				
05/14/2011	13:55:17	30	2.4	8.39	148.9				
05/14/2011	13:55:47	50	2.6	9.91	150.3				
05/14/2011	13:55:58					End Job			
05/14/2011	13:55:58	56	3.5	9.74	150.9				

Well FEDERAL 25-9 FEDERAL 25-9	Field HIGH MESA	Job Start May/14/2011	Customer ENCANA	Job Number BRWT-00022
--	---------------------------	---------------------------------	---------------------------	---------------------------------

Post Job Summary

Average Pump Rates, bbl/min				Volume of Fluid Injected, bbl			
Slurry 2.5	N2	Mud	Maximum Rate 4.0	Total Slurry 115.0	Mud	Spacer 20.0	N2
Treating Pressure Summary, psi				Breakdown Fluid			
Maximum 4000	Final 1300	Average 900	Bump Plug to 1300	Breakdown	Type	Volume	Density
Avg. N2 Percent	Designed Slurry Volume 115.0 bbl	Displacement 19.6 bbl	Mix Water Temp 65 degF	Cement Circulated to Surface? <input type="checkbox"/>	Volume		
Customer or Authorized Representative SCOTT SANDERS				Schlumberger Supervisor JEFF PATTERSON		Washed Thru Perfs <input type="checkbox"/>	To
						Circulation Lost <input type="checkbox"/>	Job Completed <input checked="" type="checkbox"/>
						-	-