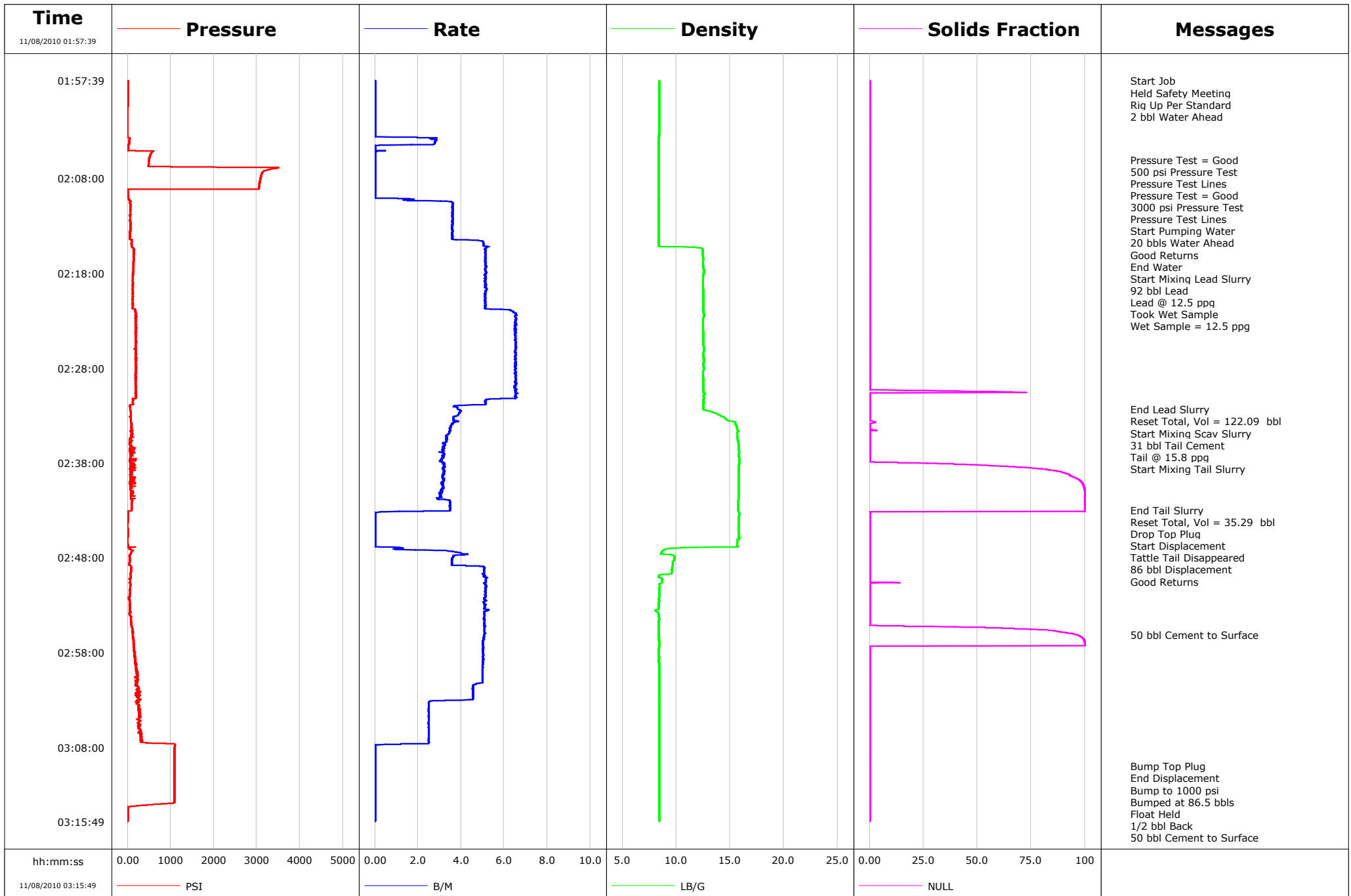


Well	Federal 25-9	Client	Encana
Field	Parachute	SIR No.	BAD4-00209
Engineer	Ryan Bowditch	Job Type	9 5/8" Surface Casing
Country	United States	Job Date	11-08-2010



				Customer		Job Number	
				Encana		BAD4-00209	
Well		Location (legal)		Schlumberger Location		Job Start	
Federal 25-9		PH25		Grand Junction, CO		Nov/08/2010	
Field		Formation Name/Type		Deviation	Bit Size	Well MD	Well TVD
Parachute		Shale		0 deg	12.3 in	1161.0 ft	1161.0 ft
County		State/Province		BHP	BHST	BHCT	Pore Press. Gradient
Garfield		Colorado		psi	90 degF	80 degF	lb/gal
Well Master		API/UWI					
0631162222		0504519123000					
Rig Name	Drilled For	Service Via	Casing/Liner				
Ensign 119	Disposal	Land					
	Depth, ft	Size, in	Weight, lb/ft	Grade	Thread		
Offshore Zone	Well Class	Well Type	40.0	20.0	94.0		
	New	Development	1161.0	9.6	36.0	K55	8RD
Drilling Fluid Type		Max. Density	Plastic Viscosity	Tubing/Drill Pipe			
		lb/gal	cP				
T/D	Depth, ft	Size, in	Weight, lb/ft	Grade	Thread		
Service Line	Job Type						
Cementing	9 5/8" Surface Casing						
Max. Allowed Tub. Press	Max. Allowed Ann. Press	WH Connection	Perforations/Open Hole				
3000 psi	500 psi	Single Cement head					
	Top, ft	Bottom, ft	shot/ft	No. of Shots	Total Interval		
Service Instructions	ft	ft			ft		
Cement 9 5/8" Surface casing with: 246sx 12.5ppg Lead to surface (80% excess on entire hole) 149sx 15.8ppg Tail (500ft column 0% excess)	ft	ft			Diameter		
	ft	ft			in		
Treat Down		Displacement		Packer Type	Packer Depth		
Casing		86.0 bbl			ft		
Tubing Vol.		Casing Vol.		Annular Vol.	Openhole Vol.		
bbl		90.0 bbl		73.0 bbl	171.0 bbl		
Casing/Tubing Secured		1 Hole Vol. Circulated prior to Cement		Casing Tools		Squeeze Job	
<input checked="" type="checkbox"/>		<input checked="" type="checkbox"/>					
Lift Pressure		Shoe Type		Shoe Depth		Squeeze Type	
574 psi		Guide		1161.0 ft			
Pipe Rotated		Pipe Reciprocated		Stage Tool Type		Tool Depth	
<input type="checkbox"/>		<input type="checkbox"/>				ft	
No. Centralizers		Top Plugs	Bottom Plugs	Stage Tool Depth		Tail Pipe Size	
		1	0	ft		in	
Cement Head Type		Job Scheduled For		Arrived on Location		Leave Location	
Single		Nov/08/2010		Nov/08/2010		Nov/08/2010	
		Collar Type		Collar Depth		Tail Pipe Depth	
		Other		1116.0 ft		ft	
		Sqz. Total Vol.					
		bbl					
Date	Time 24-hr clock	Treating Pressure PSI	Flow Rate B/M	Density LB/G	Volume BBL	Message	
11/08/2010	01:57:39	2	0.0	8.41	0.0	Started Acquisition	
11/08/2010	01:57:41	2	0.0	8.41	0.0	Held Safety Meeting	
11/08/2010	01:59:19	3	0.0	8.41	0.0		
11/08/2010	02:00:59	-1	0.0	8.41	0.0		
11/08/2010	02:02:39	-1	0.0	8.41	0.0		
11/08/2010	02:04:19	45	2.8	8.41	1.9		
11/08/2010	02:05:59	503	0.0	8.41	2.2		
11/08/2010	02:06:00	502	0.0	8.41	2.2	Pressure Test = Good	
11/08/2010	02:07:00	3329	0.0	8.41	2.2	Pressure Test = Good	
11/08/2010	02:07:39	3103	0.0	8.41	2.2		
11/08/2010	02:09:19	0	0.0	8.41	2.2		
11/08/2010	02:09:45	15	0.0	8.41	2.2	Start Pumping Water	
11/08/2010	02:09:46	12	0.0	8.41	2.2	Good Returns	
11/08/2010	02:10:59	67	3.6	8.41	4.9		
11/08/2010	02:12:39	70	3.6	8.41	10.9		
11/08/2010	02:14:19	56	3.6	8.41	16.9		
11/08/2010	02:14:59	98	5.0	8.41	20.0	End Water	
11/08/2010	02:15:37	152	5.2	12.46	23.3	Start Mixing Lead Slurry	
11/08/2010	02:15:40	151	5.1	12.47	23.5	92 bbl Lead	
11/08/2010	02:15:59	153	5.1	12.46	25.1		
11/08/2010	02:17:39	137	5.1	12.58	33.7		

Well		Field		Job Start		Customer		Job Number	
Federal 25-9		Parachute		Nov/08/2010		Encana		BAD4-00209	
Date	Time 24-hr clock	Treating Pressure PSI	Flow Rate B/M	Density LB/G	Volume BBL	Message			
11/08/2010	02:19:01	117	5.1	12.49	40.7	Wet Sample = 12.5 ppg			
11/08/2010	02:19:19	119	5.1	12.49	42.3				
11/08/2010	02:20:59	124	5.1	12.52	50.8				
11/08/2010	02:22:39	179	6.5	12.54	60.5				
11/08/2010	02:24:19	187	6.5	12.53	71.4				
11/08/2010	02:25:59	193	6.5	12.58	82.3				
11/08/2010	02:27:39	194	6.5	12.55	93.1				
11/08/2010	02:29:19	205	6.5	12.52	104.0				
11/08/2010	02:30:59	195	6.5	12.56	114.9				
11/08/2010	02:32:22	65	3.9	12.52	121.7	End Lead Slurry			
11/08/2010	02:32:28	68	4.0	12.73	122.1	Reset Total, Vol = 122.09 bbl			
11/08/2010	02:32:35	71	4.0	13.31	122.6	Start Mixing Scav Slurry			
11/08/2010	02:32:36	71	4.0	13.31	122.6	31 bbl Tail Cement			
11/08/2010	02:32:39	72	3.9	13.39	122.8				
11/08/2010	02:34:19	111	3.5	15.63	129.0				
11/08/2010	02:34:30	85	3.5	15.70	129.6	Start Mixing Tail Slurry			
11/08/2010	02:35:59	63	3.2	15.79	134.6				
11/08/2010	02:37:39	53	3.1	15.84	139.9				
11/08/2010	02:39:19	83	3.1	15.80	145.2				
11/08/2010	02:40:59	71	3.1	15.79	150.4				
11/08/2010	02:42:39	101	3.5	15.77	155.8				
11/08/2010	02:42:58	100	3.5	15.77	156.9	End Tail Slurry			
11/08/2010	02:43:06	11	2.3	15.77	157.4	Reset Total, Vol = 35.29 bbl			
11/08/2010	02:43:07	7	1.2	15.79	0.0	Drop Top Plug			
11/08/2010	02:43:08	7	1.2	15.79	0.0	Start Displacement			
11/08/2010	02:43:10	9	0.3	15.82	0.1	Tattle Tail Disappeared			
11/08/2010	02:44:19	10	0.0	15.82	0.1				
11/08/2010	02:45:59	-1	0.0	15.87	0.1				
11/08/2010	02:47:39	72	4.3	8.86	2.1				
11/08/2010	02:49:19	84	5.1	9.58	8.9				
11/08/2010	02:50:00	68	5.1	8.37	12.3	Good Returns			
11/08/2010	02:50:59	67	5.2	8.49	17.4				
11/08/2010	02:52:39	52	5.1	8.40	25.9				
11/08/2010	02:54:19	72	5.1	8.41	34.4				
11/08/2010	02:55:59	130	5.1	8.37	42.9				
11/08/2010	02:56:04	120	5.1	8.38	43.3	50 bbl Cement to Surface			
11/08/2010	02:57:39	150	5.0	8.40	51.3				
11/08/2010	02:59:19	193	5.0	8.41	59.7				
11/08/2010	03:00:59	205	5.0	8.41	68.0				
11/08/2010	03:02:39	253	4.6	8.41	75.7				
11/08/2010	03:04:19	276	2.5	8.41	80.7				
11/08/2010	03:05:59	246	2.5	8.41	84.9				
11/08/2010	03:07:39	1088	1.2	8.41	89.0				
11/08/2010	03:09:19	1091	0.0	8.42	89.1				
11/08/2010	03:09:58	1092	0.0	8.42	89.1	Bump Top Plug			
11/08/2010	03:09:59	1092	0.0	8.42	89.1	End Displacement			
11/08/2010	03:10:01	1092	0.0	8.42	89.1	Bump to 1000 psi			
11/08/2010	03:10:59	1092	0.0	8.42	89.1				
11/08/2010	03:12:39	1093	0.0	8.42	89.1				
11/08/2010	03:14:19	5	0.0	8.42	89.1				
11/08/2010	03:14:34	4	0.0	8.42	89.1	Float Held			
11/08/2010	03:15:30	5	0.0	8.42	89.1	50 bbl Cement to Surface			

Well Federal 25-9	Field Parachute	Job Start Nov/08/2010	Customer Encana	Job Number BAD4-00209
-----------------------------	---------------------------	---------------------------------	---------------------------	---------------------------------

Post Job Summary

Average Pump Rates, bbl/min					Volume of Fluid Injected, bbl			
Slurry 4.5	N2	Mud	Maximum Rate 6.5	Total Slurry 123.0	Mud 0.0	Spacer 20.0	N2	
Treating Pressure Summary, psi					Breakdown Fluid			
Maximum 1000	Final 1000	Average 300	Bump Plug to 1000	Breakdown	Type	Volume bbl	Density lb/gal	
Avg. N2 Percent %	Designed Slurry Volume 123.0 bbl	Displacement 86.5 bbl	Mix Water Temp 56 degF	Cement Circulated to Surface? <input checked="" type="checkbox"/>	Volume 50.0 bbl			
				Washed Thru Perfs <input type="checkbox"/>	To ft			
Customer or Authorized Representative Tony Ketterling			Schlumberger Supervisor Ryan Bowditch		Circulation Lost <input type="checkbox"/>	Job Completed <input checked="" type="checkbox"/>		
				-	-			