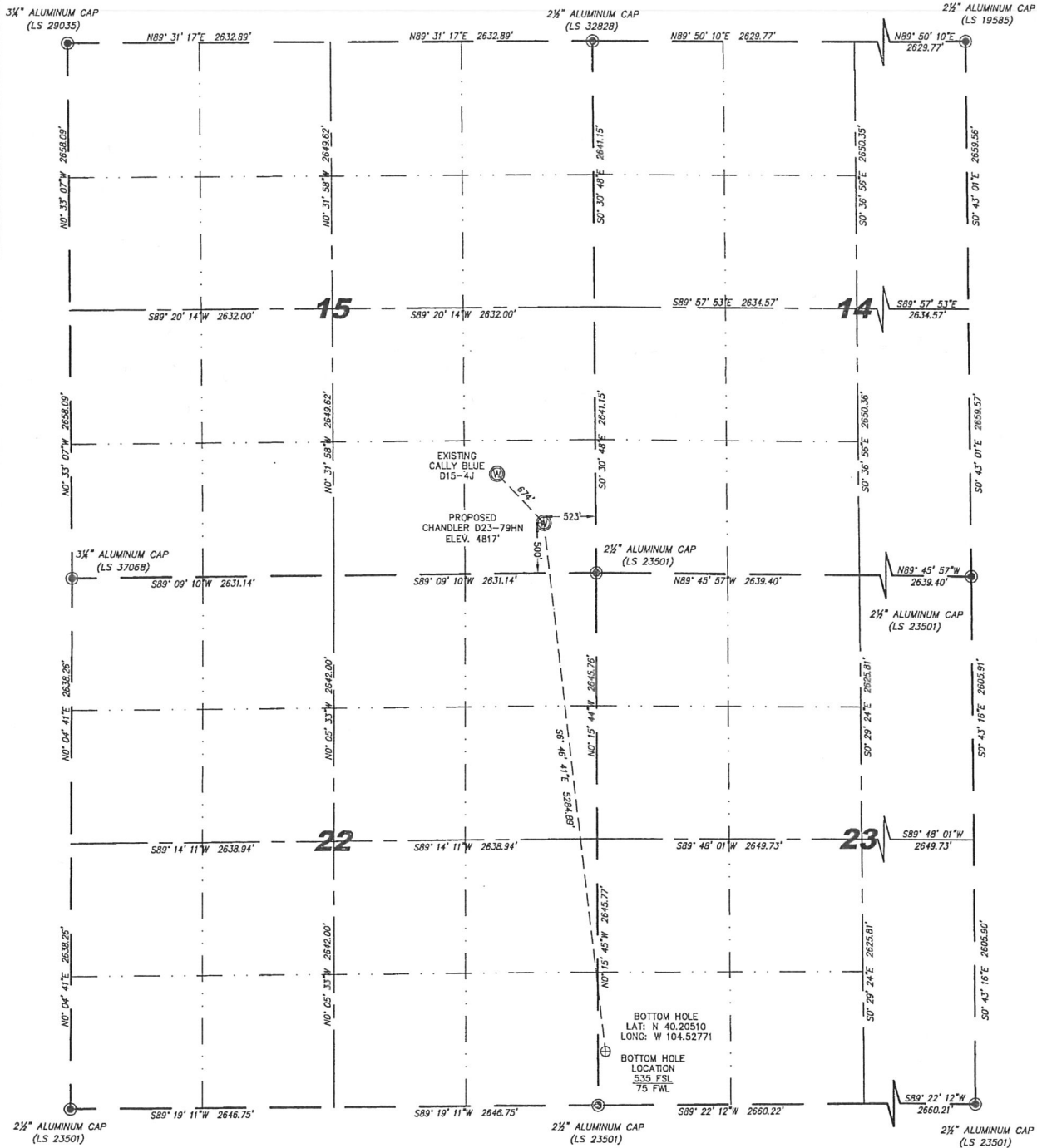


WELL LOCATION CERTIFICATE
THIS MAP DOES NOT REPRESENT A BOUNDARY SURVEY

SECTIONS 14, 15, 22 & 23
TOWNSHIP 3 NORTH
RANGE 64 WEST



IN ACCORDANCE WITH A REQUEST FROM BRIAN DROSE - NOBLE ENERGY INC, STELL SURVEYING SERVICES, LLC HAS DETERMINED THE LOCATION OF THE CHANDLER D23-79HN WELL TO BE 500' FSL, 523' FSL, AS MEASURED AT NINETY (90) DEGREES FROM THE SECTION LINES, SECTION 15, TOWNSHIP 3 NORTH, RANGE 64 WEST, 6TH PRINCIPLE MERIDIAN, WELD COUNTY, COLORADO.

I HEREBY CERTIFY THAT THIS WELL LOCATION CERTIFICATE WAS PREPARED BY ME, OR UNDER MY DIRECT SUPERVISION, THAT THE FIELD WORK WAS COMPLETED ON 06/24/2011, FOR AND ON BEHALF OF NOBLE ENERGY INC, THAT IT IS NOT A LAND SURVEY PLAT OR AN IMPROVEMENT SURVEY PLAT, AND THAT IT IS NOT TO BE RELIED UPON FOR ESTABLISHMENT OF FENCE, BUILDING, OR OTHER FUTURE IMPROVEMENT LINES.

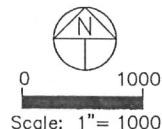
NOTES:

- 1) BASIS OF BEARINGS FOR THIS MAP ARE BASED UPON GPS OBSERVATIONS MADE ON 02/02/2010 BETWEEN MONUMENTS LOCATED AT THE SOUTHEAST SECTION CORNER AND THE NORTHEAST SECTION CORNER OF SAID SECTION AND WITH ALL BEARINGS SHOWN HEREON RELATIVE THERETO.
- 2) COORDINATES SHOWN ARE COLORADO STATE PLANE (NORTH ZONE) NAD 83.
- 3) ELEVATIONS ARE BASED UPON NGS OPUS SOLUTION NAVD 88 DATUM.
- 4) THE NEAREST EXISTING WELL IS: CALLY BLUE D15-4J, 874' NORTHWEST.
- 5) SEE LOCATION DRAWING FOR ALL IMPROVEMENTS WITHIN VISIBLE IMPROVEMENTS LIMIT.
- 6) THE LOCATION FALLS IN PASTURE LAND.

LATITUDE & LONGITUDE (NAD 83 SURFACE HOLE):
 LATITUDE: N 40.21952'
 LONGITUDE: W 104.52974'
 POOP: 3.3
 QUARTER-QUARTER: SE/4SE/4 SEC 15
 NEAREST PROPERTY LINE: 500' SOUTH

LEGEND

- FOUND SURVEY MONUMENT PER MONUMENT RECORD - EXCEPTIONS NOTED.
- (C) CALCULATED DIMENSION



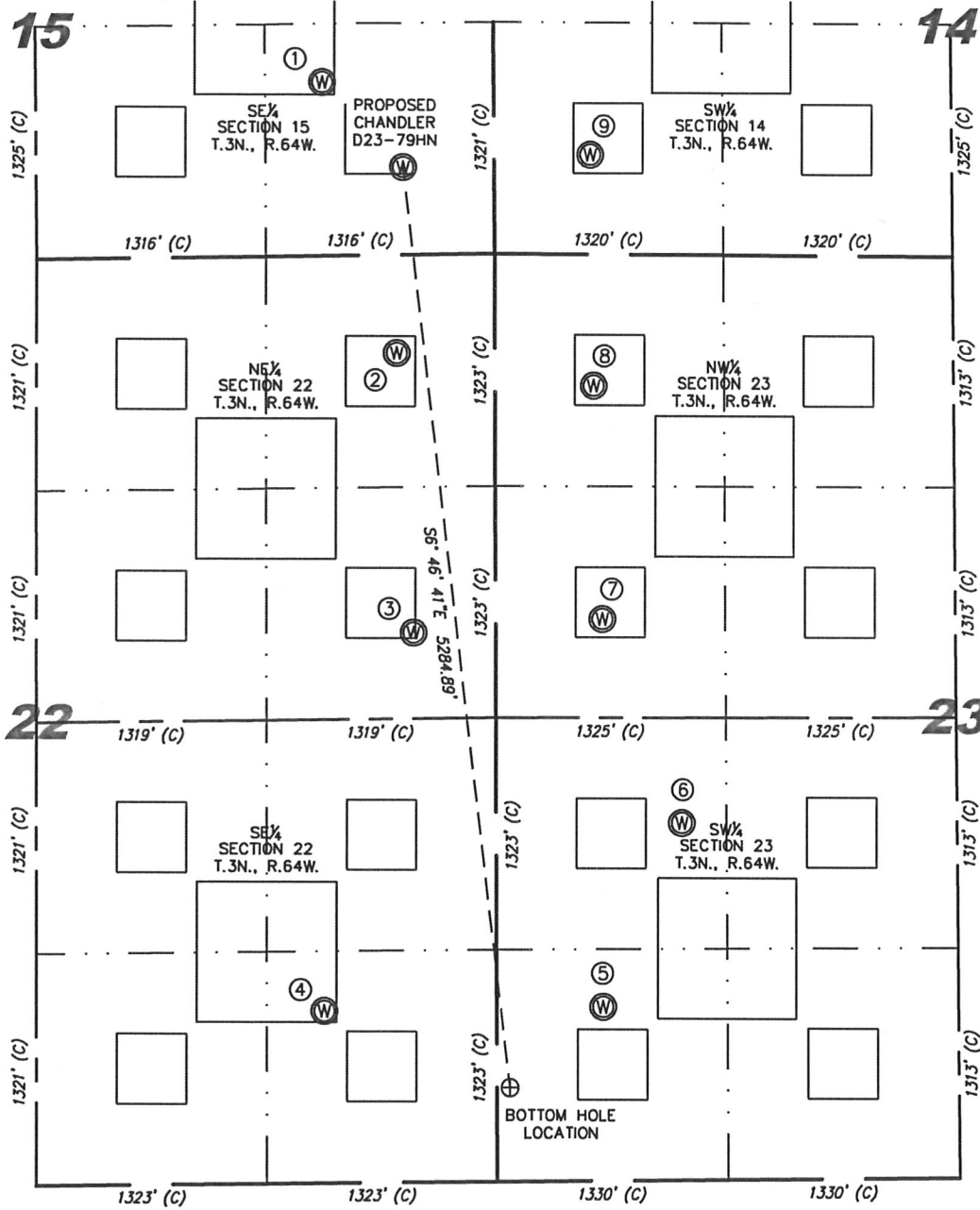
NOTICE: According to Colorado law you MUST commence any legal action based upon any defect in this W.L.C. within three years after you first discover such defect. In no event may any action based upon any defect in this W.L.C. be commenced more than ten years from this said date of the certification shown hereon.

Completed 06/28/2011
 David C. Holmes
 Professional Land Surveyor Registration No. 32828
 State of Colorado

JOB #11086

SITE SKETCH - CHANDLER D23-79HN

SECTION 15
TOWNSHIP 3 NORTH
RANGE 64 WEST



①
CALLY BLUE
D15-4J
SE/SE SEC. 15
991' FSL
988' FEL
EL 4813'
N 40.22086
W 104.53140
PDOP 2.0

②
SEVEN DUST
STATE D22-1
NE/NE SEC. 22
558' FNL
563' FEL
EL 4830'
N 40.21662
W 104.52990
PDOP 1.9

③
SPIKE STATE
GWS D22-08
SE/NE SEC. 22
2154' FNL
470' FEL
EL 4836'
N 40.21224
W 104.52961
PDOP 3.4

④
SPIKE STATE
GWS D22-4J
SE/SE SEC. 22
982' FNL
991' FEL
EL 4835'
N 40.20632
W 104.53152
PDOP 2.2

⑤
PARKER BLUE
D23-13
SW/SW SEC. 23
992' FSL
613' FWL
EL 4847'
N 40.20635
W 104.52578
PDOP 2.1

⑥
PARKER BLUE
D23-3J
NW/SW SEC. 23
2037' FSL
1069' FWL
EL 4849'
N 40.20922
W 104.52412
PDOP 1.9

⑦
PARKER RED
D23-5
SW/NW SEC. 23
2077' FNL
616' FWL
EL 4852'
N 40.21243
W 104.52572
PDOP 1.8

⑧
PARKER RED
D23-4
NW/NW SEC. 23
747' FNL
570' FWL
EL 4835'
N 40.21608
W 104.52585
PDOP 2.1

⑨
SPIKE STATE
D14-13
SW/SW SEC. 14
568' FSL
556' FWL
EL 4823'
N 40.21969
W 104.52588
PDOP 2.0

NOTES:

- 1) THIS SKETCH DOES NOT REPRESENT A BOUNDARY SURVEY.
- 2) THE DATUM FOR THE LATITUDES AND LONGITUDES ON THIS SKETCH IS NAD83.



0 1000
Scale: 1" = 1000'