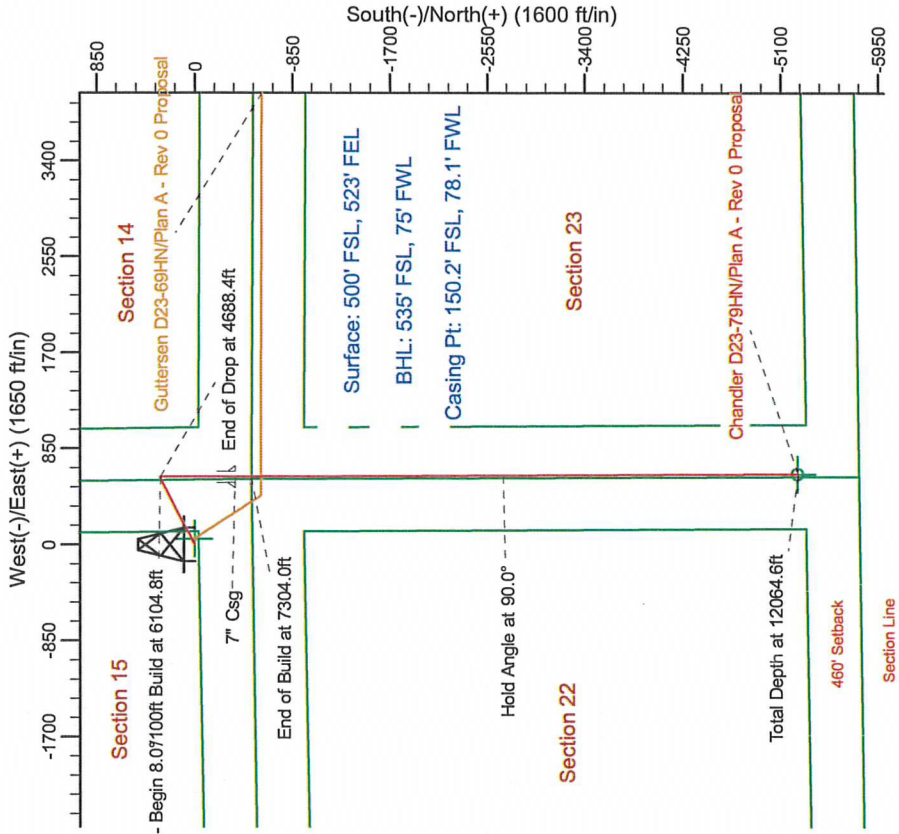
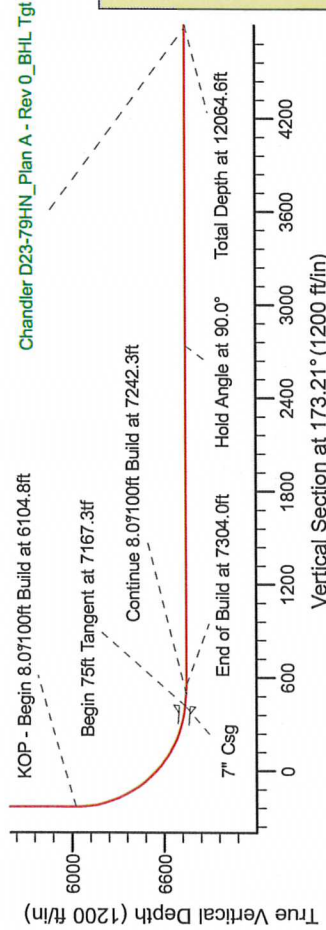
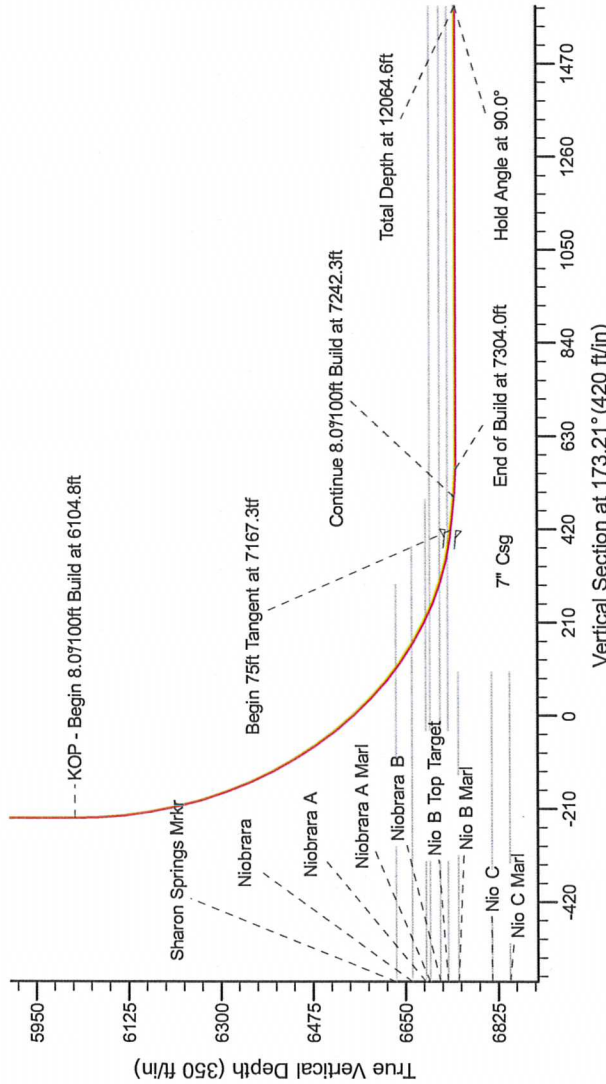


Project: Weld County Colorado (NAD 83)  
 Site: Sec.15, T3N, R64W  
 Well: Chandler D23-79HN  
 Wellbore: Plan A - Rev 0 (PERMITTING PLAN ONLY)  
 Design: Plan A - Rev 0 Proposal

**SECTION DETAILS**

Sec	MD	Inc	Azi	TVD	+N/-S	+E/W	Dleg	TFace	Vsect	Target
1	0.0	0.00	0.00	0.0	0.0	0.0	0.00	0.00	0.0	
2	1500.0	0.00	63.05	1500.0	0.0	0.0	0.00	0.00	0.0	
3	2100.0	15.00	63.05	2093.2	35.4	69.6	2.50	63.05	-26.9	
4	4088.4	15.00	63.05	4013.8	268.6	528.4	0.00	180.00	-204.3	
5	4688.4	0.00	0.00	607.0	304.0	598.0	2.50	180.00	-231.2	
6	6104.8	0.00	0.00	6023.4	304.0	598.0	0.00	0.00	-231.2	
7	7167.3	85.00	179.73	6736.9	-349.8	601.1	8.00	179.73	418.4	
8	7242.3	85.00	179.73	6743.4	-424.5	601.4	0.00	0.00	492.6	
9	7304.8	90.00	179.73	6746.1	-486.9	601.7	8.00	0.00	554.6	
10	12064.6	90.00	179.72	6746.0	-5246.7	624.5	0.00	-69.63	5283.7	Chandler D23-79HN_Plan A - Rev 0_BHL_Tgt-



**WELL DETAILS: Chandler D23-79HN(NAD83 Geodetic System)**

Ground Level:	4817.0	Longitude	104° 31' 47.064 W
Northing	403646.10	Latitude	40° 13' 10.272 N
Easting	986984.95	Longitude	104° 31' 47.064 W

Plan: Plan A - Rev 0 Proposal (Chandler D23-79HN/Plan A - Rev 0 (PERMITTING PLAN ONLY))

Created By: Erasmo Mendoza Date: 9-42, August, 16 2011

**TGM**

Magnetic North: 109°20'05" E  
 Inclination: 8.03°  
 Dip Angle: 66.96°  
 Field Strength: 53067.4

Grid North is 0.07% East of True North (Old Contour lines)  
 Magnetic North is 1.07% East of Grid North (Magnetic Contour lines)  
 To convert a True Direction to a Grid Direction, Add 0.07% and  
 To convert a Magnetic Direction to a Grid Direction, Add 8.03%