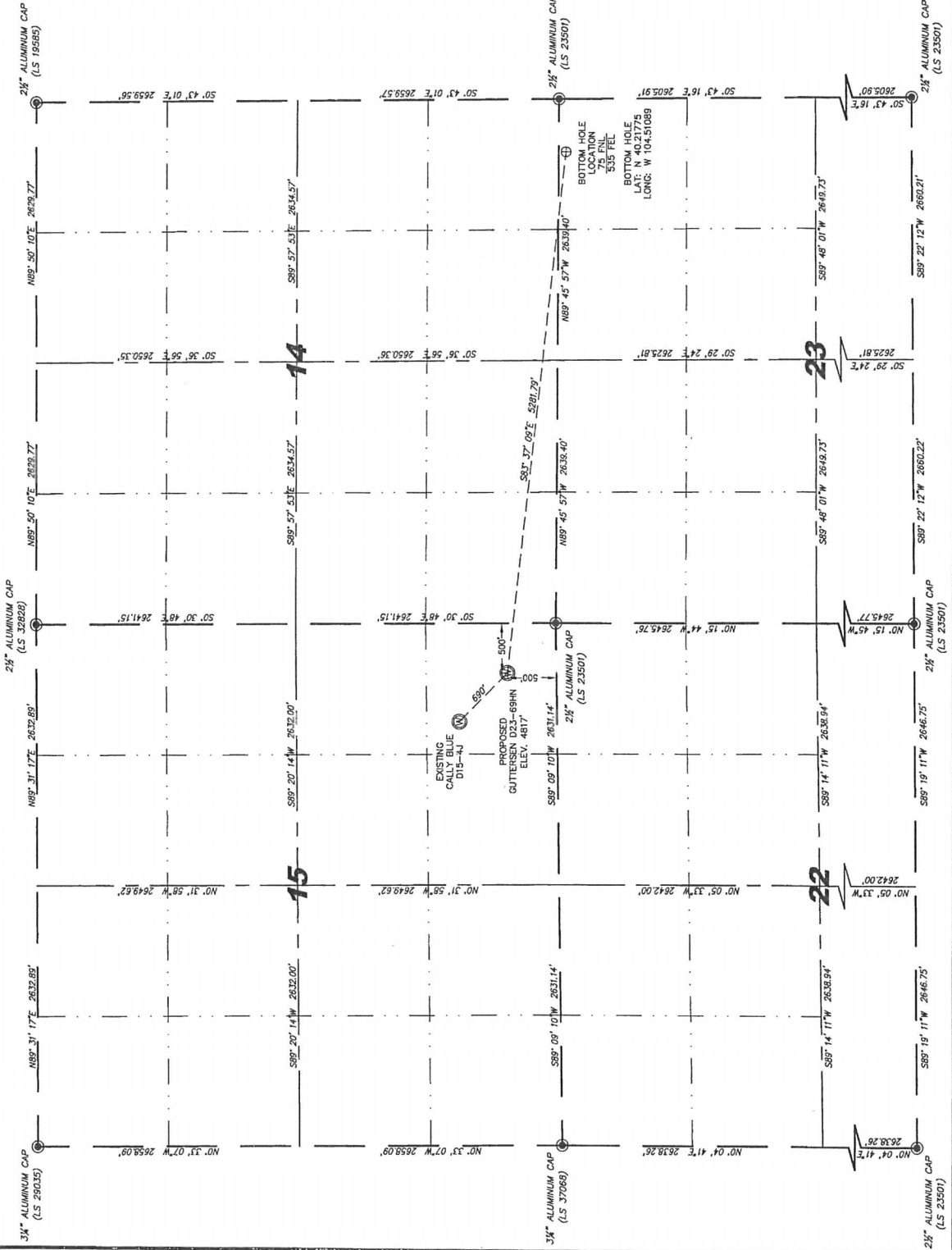
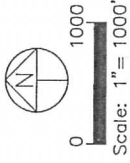


SECTIONS 14, 15, 22 & 23
TOWNSHIP 3 NORTH
RANGE 64 WEST

Stell Surveying Services, LLC

Cheyenne, Wyoming 82001

1102 West 19th Street P.O. BOX 2073
WELL LOCATION CERTIFICATE
THIS MAP DOES NOT REPRESENT A BOUNDARY SURVEY



IN ACCORDANCE WITH A REQUEST FROM BRIAN DORSEY - NOBLE ENERGY INC, STELL SURVEYING SERVICES, LLC HAS DETERMINED THE LOCATION OF THE SURVEYED WELL AS SHOWN ON THIS MAP. THE WELL IS LOCATED IN THE 60' DEGREE FROM THE SECTION LINES, SECTION 15, CORNER 3 NORTH, RANGE 64 WEST, 6TH PRINCIPLE MERIDIAN, WELD COUNTY, COLORADO.

I HEREBY CERTIFY THAT THIS WELL LOCATION CERTIFICATE WAS PREPARED BY ME, OR UNDER MY DIRECT SUPERVISION, THAT THE FIELD WORK WAS COMPLETED ON A LAND SURVEY PLAT OR AN IMPROVEMENT SURVEY PLAT, AND THAT IT IS NOT TO BE REIED UPON FOR THE ESTABLISHMENT OF FENCE, BUILDING, OR OTHER FUTURE IMPROVEMENT LINES.

NOTES:

- 1) BASIS OF BEARINGS FOR THIS MAP ARE BASED UPON GPS OBSERVATIONS MADE ON 02/02/2010 BETWEEN MONUMENTS LOCATED AT THE SOUTHEAST CORNER OF SECTION 15, CORNER 3 NORTH, RANGE 64 WEST, AND WITH ALL BEARINGS SHOWN HEREON RELATIVE THERE TO.
- 2) COORDINATES SHOWN ARE COLORADO STATE PLANE (NORTH ZONE) NAD 83.
- 3) THE NEAREST EXISTING WELL IS CALLY BLUE D15-AJ.
- 4) SEE LOCATION DRAWING FOR ALL IMPROVEMENTS WITHIN VISIBLE MONUMENTS.
- 5) THE LOCATION FALLS IN PASTURE LAND.

LATITUDE & LONGITUDE (NAD 83 SURFACE HOLE):
LATITUDE: N 40.21827
LONGITUDE: W 104.523866
POOP: 3.5
QUAD: CHARTER: SE / SE / 4, SEC 15
NEAREST PROPERTY LINE: 500 SOUTH

LEGEND

- FOUND SURVEY MONUMENT PER MONUMENT RECORD - EXCEPTIONS NOTED.
- (C) CALCULATED DIMENSION

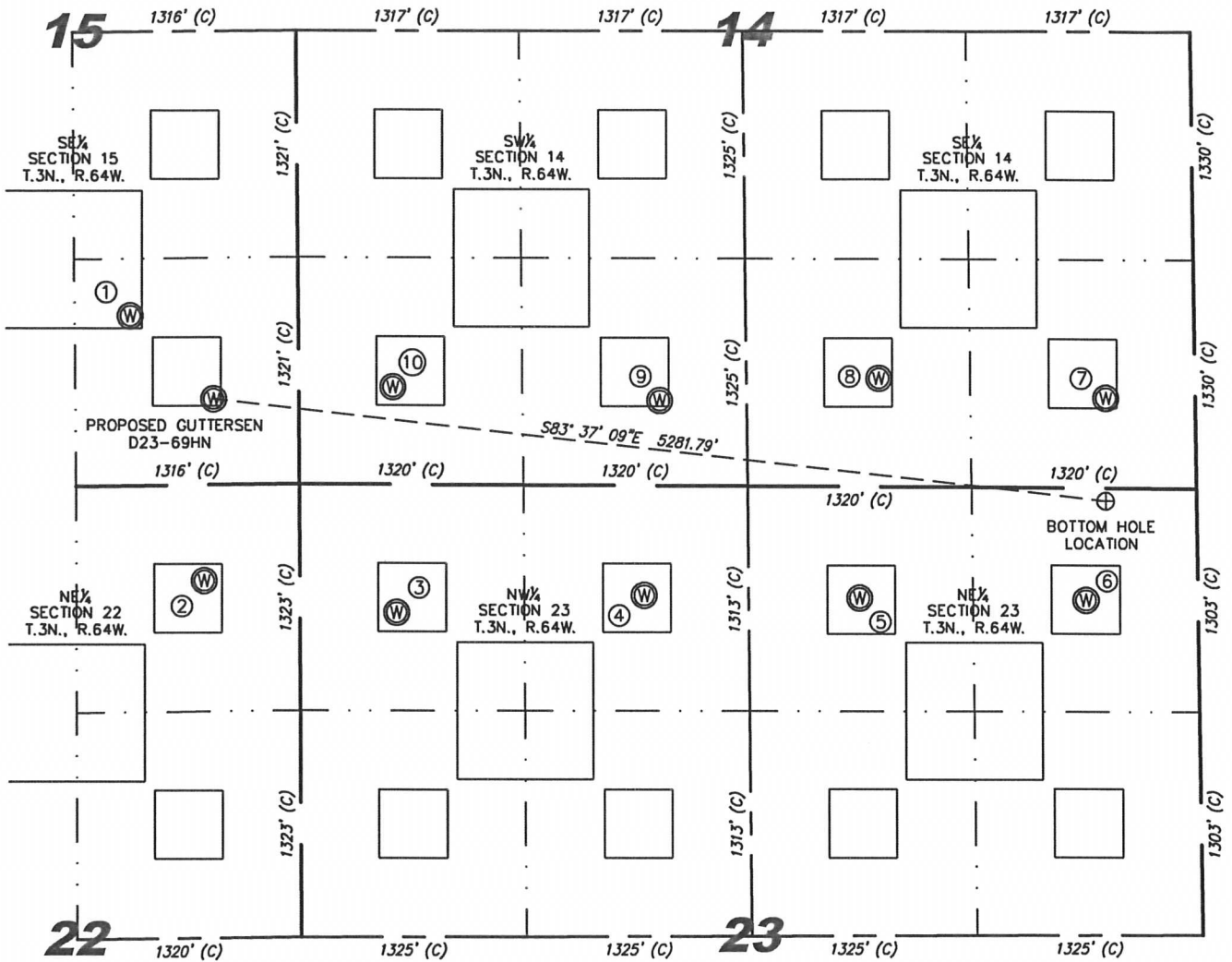
NOTICE: According to Colorado law you MUST file this W.L.C. within three years after you detect any action based upon any defect in this W.L.C. If you fail to do so, the W.L.C. shall be deemed correct and the well date of the certification shown herein.



Completed 06/29/2011
David C. Holmes
Professional Land Surveyor Registration No. 32828
State of Colorado
JOB # 11086

SITE SKETCH – GUTTERSEN D23-69HN

SECTION 15
TOWNSHIP 3 NORTH
RANGE 64 WEST



<p>① CALLY BLUE D15-4J SE/SE SEC. 15 991' FSL 988' FEL EL 4813' N 40.22086 W 104.53140 PDOP 2.0</p>	<p>② SEVEN DUST STATE D22-1 NE/NE SEC. 22 558' FNL 563' FEL EL 4830' N 40.21662 W 104.52990 PDOP 1.9</p>	<p>③ PARKER RED D23-4 NW/NW SEC. 23 747' FNL 570' FWL EL 4835' N 40.21608 W 104.52585 PDOP 2.1</p>	<p>④ PARKER RED D23-3 NE/NW SEC. 23 640' FNL 2026' FWL EL 4823' N 40.21631 W 104.52063 PDOP 2.1</p>	<p>⑤ GUTTERSEN 31-23 NW/NE SEC. 23 650' FNL 1988' FEL EL 4825' N 40.21623 W 104.51609 PDOP 2.4</p>	<p>⑥ GUTTERSEN 23-41 NE/NE SEC. 23 654' FNL 659' FEL EL 4773' N 40.21617 W 104.51133 PDOP 2.4</p>
<p>⑦ SPIKE STATE D14-16 SE/SE SEC. 14 524' FSL 526' FEL EL 4782' N 40.21940 W 104.51086 PDOP 2.8</p>	<p>⑧ SPIKE STATE GWS D14-15 SW/SE SEC. 14 632' FSL 1856' FEL EL 4809' N 40.21975 W 104.51562 PDOP 2.0</p>	<p>⑨ SPIKE STATE GWS D14-14 SE/SW SEC. 14 496' FSL 2125' FWL EL 4822' N 40.21943 W 104.52026 PDOP 1.9</p>	<p>⑩ SPIKE STATE D14-13 SW/SW SEC. 14 568' FSL 556' FWL EL 4823' N 40.21969 W 104.52588 PDOP 2.0</p>		

NOTES:

- THIS SKETCH DOES NOT REPRESENT A BOUNDARY SURVEY.
- THE DATUM FOR THE LATITUDES AND LONGITUDES ON THIS SKETCH IS NAD83.



0 1000
Scale: 1" = 1000'