

# Noble Energy

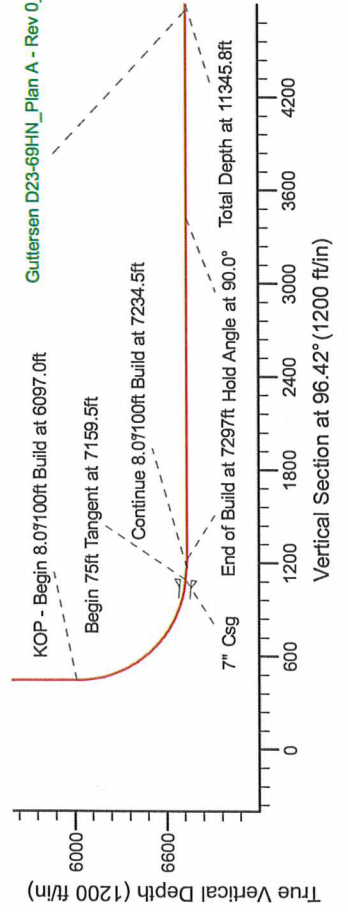
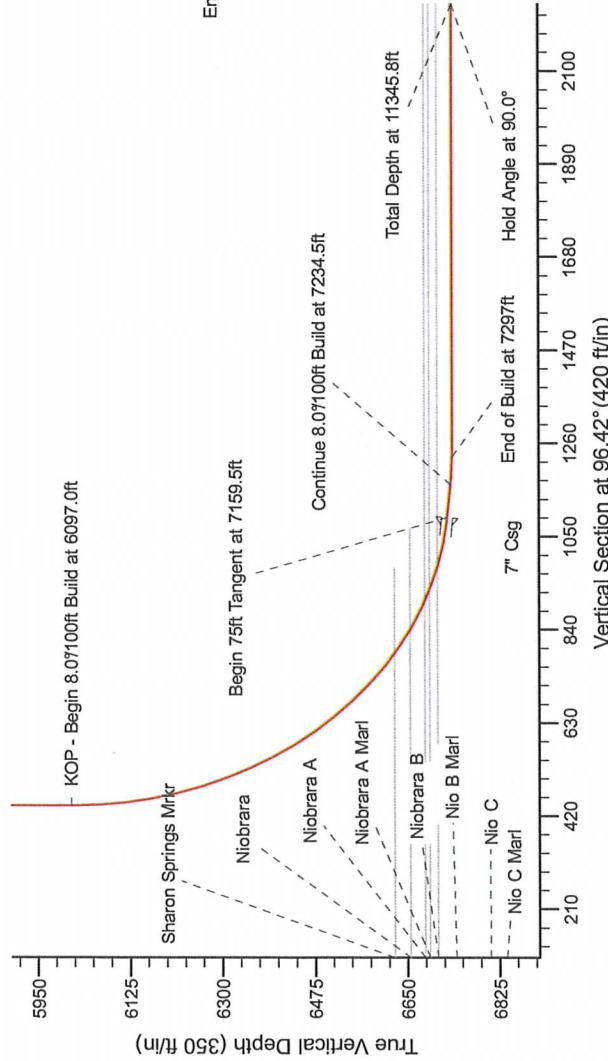
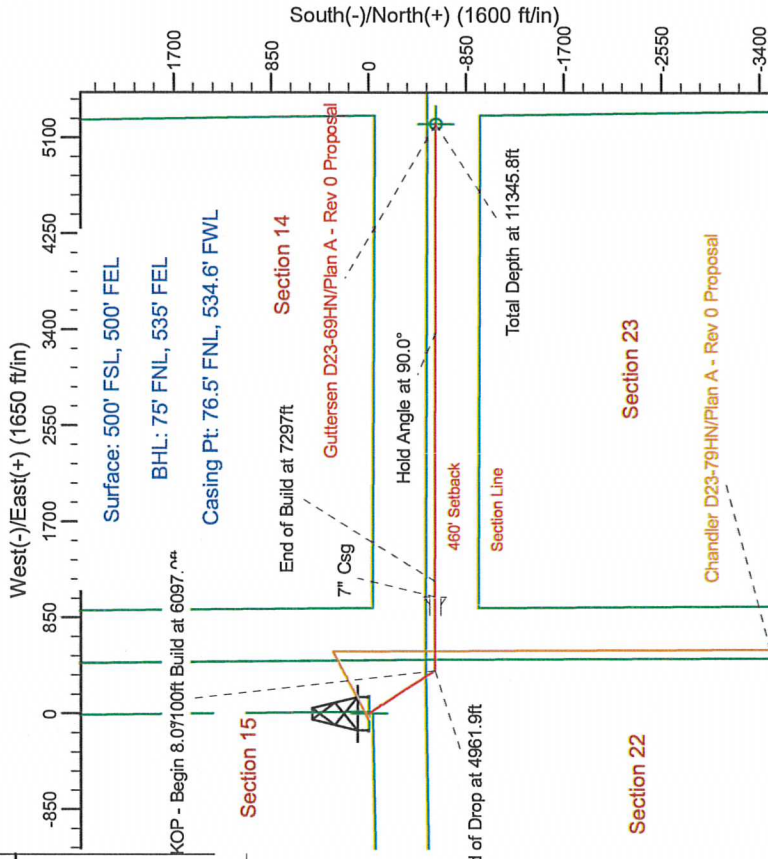
**HALLIBURTON**  
Sperry Drilling

Project: Weld County Colorado (NAD 83)  
Site: Sec.15, T3N, R64W  
Well: Guttersen D23-69HN  
Wellbore: Plan A - Rev 0 (PERMITTING PLAN ONLY)  
Design: Plan A - Rev 0 Proposal

SECTION DETAILS

Sec	MD	Inc	Azi	TVD	+N/S	+E/W	Dleg	TFace	VSect	Target
1	0.0	0.00	0.00	1700.0	0.0	0.0	0.00	0.00	0.0	0.0
2	1700.0	0.00	0.00	1700.0	0.0	0.0	0.00	0.00	0.0	0.0
3	2289.9	15.00	146.47	2293.1	-65.1	43.1	2.50	146.47	50.1	50.1
4	4362.0	15.00	146.47	4294.9	-598.9	337.9	0.00	0.00	392.7	392.7
5	4961.9	0.00	0.00	4878.0	-381.0	180.00	0.00	0.00	442.9	442.9
6	6097.0	0.00	0.00	6013.1	-375.0	381.0	0.00	0.00	442.9	442.9
7	7159.5	85.00	90.14	6726.6	-576.6	1034.8	8.00	90.14	1092.7	1092.7
8	7234.5	85.00	90.14	6733.1	-576.8	1109.5	8.00	0.00	1167.0	1167.0
9	7297.0	90.00	90.14	6735.8	-576.9	1171.9	8.00	0.00	1229.0	1229.0
10	11345.8	90.00	90.15	6736.0	-587.2	5220.7	0.00	116.45	5263.7	5263.7

Guttersen D23-69HN\_Plan A - Rev 0\_BHL\_Tgt



Guttersen D23-69HN\_Plan A - Rev 0\_BHL\_Tgt

Magnetic North: 694205610  
Dip Angle: 66.85°  
Field Strength: 53067.2

True North is 0.07° East of True North (GAD Corner Stone)  
Magnetic North is 66.85° East of True North (Magnetic Declination)  
To convert a True Direction to a Grid Direction, subtract 0.07°  
To convert a Magnetic Direction to a Grid Direction, Add 66.85°

WELL DETAILS: Guttersen D23-69HN(NAD83 Geocentric System)

Ground Level: 4817.0  
Northing: 403646.27  
Easting: 997000.27  
Longitude: 104° 31' 46.416 W  
Latitude: 40° 13' 10.272 N

Plan: Plan A - Rev 0 Proposal (Guttersen D23-69HN/Plan A - Rev 0 (PERMITTING PLAN ONLY))

Created By: Erasmo Mendoza Date: 9:33, August 16 2011