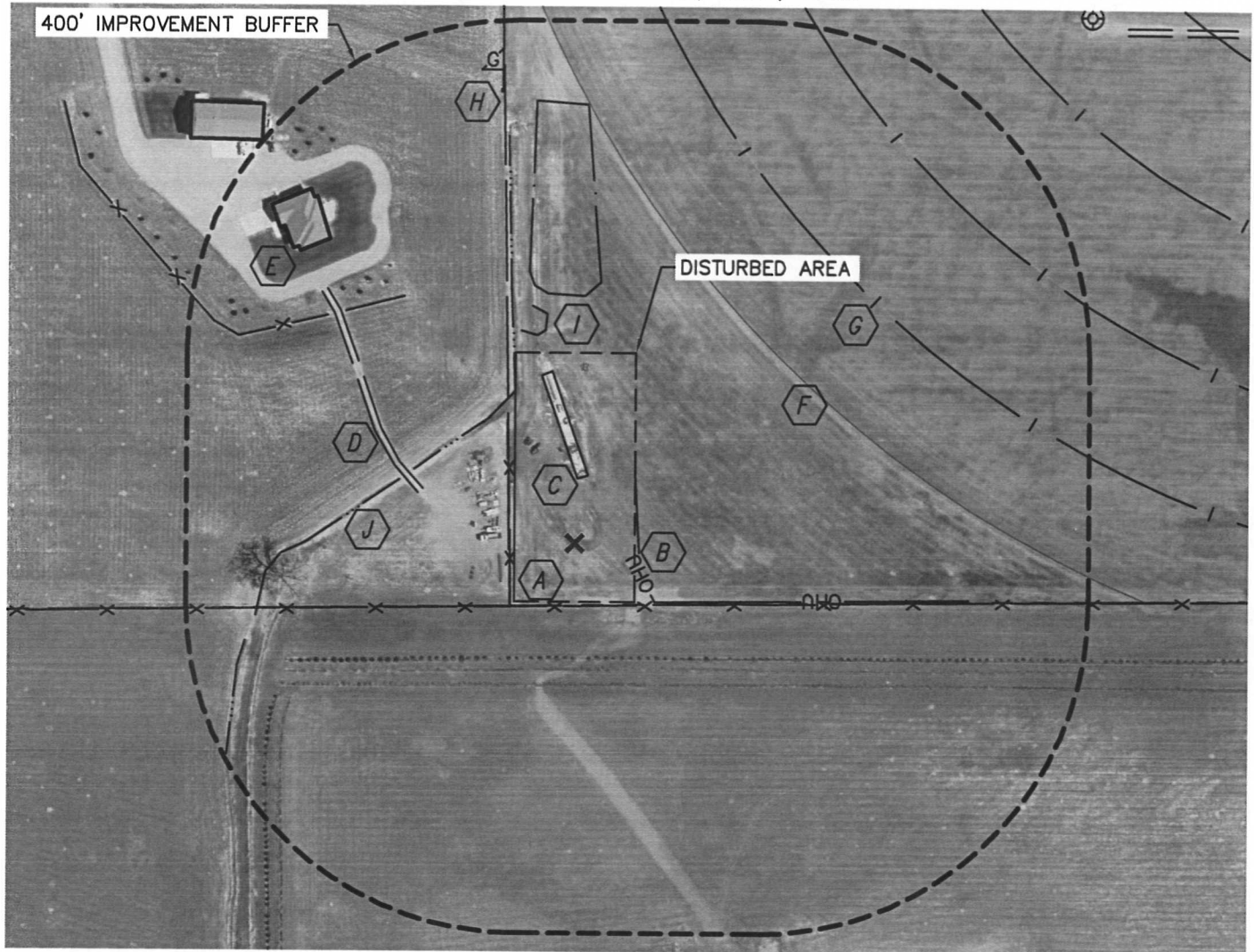


Lat40°, Inc. 1635 Foxtrail Drive, Suite 325 Loveland, CO 970-776-3321

PRODUCTION FACILITY LOCATION DRAWING

MOSER PC G10-20D, 21D, 24D

SECTION: 10
TOWNSHIP: 4N
RANGE: 65W



REFERENCE POINT LOCATION:

LATITUDE: 40.31993°N
LONGITUDE: 104.65356°W
ELEV: 4715'
PDOP: 2.2
DATE: 8/24/11
OPERATOR: ADAM KELLY
1/41/4: SE1/4SW1/4
FSL: 75'
FWL: 1405'
DISTANCE TO WELL: 895'
ASSOCIATED NEW WELLS:
MOSER PC G10-20D, 21D, 24D
ASSOCIATED EXISTING WELLS:
NONE

IMPROVEMENTS:

- A FENCE 76' S, 80' W, 362' NW
- B OVERHEAD UTILITY 78' E
- C CONCRETE PAD 78' N
- D FIELD ROAD 197' NW
- E BUILDING 472' & 617' NW
- F FIELD LINE 335' NE
- G PIVOT TRACK 464' & 620' NE
- H GAS LINE MARKER 552' NW
- I IRRIGATION POND 298' N, 255' NW
- J DITCH 184' NW

LEGEND

X - REFERENCE POINT
ALL DISTANCES ARE APPROXIMATE.

NEAREST: BUILDING 472' NW,
PUBLIC ROAD 1230' E (CR 43.5), ABOVE GROUND UTILITY 78' E,
RAILROAD 5280'+, PROPERTY LINE 75' S

