

Company: **EnCana Oil & Gas (USA) Inc.**

Well: **Costigan 43-20**

Field: **Wattenberg**

County: **Weld**

State/Province: **Colorado**

Location: **SHL 9661 FSL & 1078 FEL SESE**

Well: **BHL 1980 FSL & 510 FEL**

County: **Sec 20 Twp 1N Rge 63W**

State/Province: **Colorado**

Log Interval: **1223**

Log Depth: **71765**

Log Type: **Caliper**

Log Unit: **ft**

Log Scale: **1:240**

Log Interval: **1223**

Log Depth: **71765**

Log Type: **Caliper**

Log Unit: **ft**

Log Scale: **1:240**

Log Interval: **1223**

Log Depth: **71765**

Log Type: **Caliper**

Log Unit: **ft**

Log Scale: **1:240**

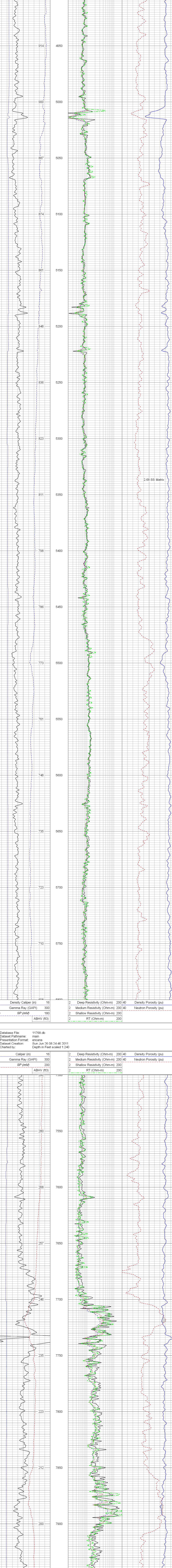
<<< Fold Here >>>

All interpretations are opinions based on inferences from electrical or other measurements and we cannot and do not guarantee the accuracy or correctness of any interpretation, and we shall not, except in the case of gross or willful negligence on our part, be liable or responsible for any loss, costs, damages, or expenses incurred or sustained by anyone resulting from any interpretation made by any of our officers, agents or employees. These interpretations are also subject to our general terms and conditions set out in our current Price Schedule.

Comments

Annular volume calculated for 4.5" casing
Ensign Rig 122
Thank you for using Phoenix Surveys!!
API #: 05-123-30059

Database File: 11768.db
Dataset Pathname: main
Presentation Format: enana
Dataset Creation: Sun Jun 26 08:24:46 2011
Charted by:



Database File: 11768.db
Dataset Pathname: main
Presentation Format: enana
Dataset Creation: Sun Jun 26 08:24:46 2011
Charted by:

