



CEMENT BOND LOG

Mesa Wireline

Company	ENCANA OIL & GAS (USA) INC		
Well	KUNER 8-2-25		
Field	WATTENBERG		
County	WELD		
State	COLORADO		
Company ENCANA OIL & GAS (USA) INC		Location: API #: 05-123-30811-0000	
Well KUNER 8-2-25		SHL: 1258' FNL & 238' FEL	
Field WATTENBERG		BHL: 1300' FNL & 50' FEL	
County WELD		State COLORADO	
SEC. 25 TWP. 5N RGE. 64W		Permanent Datum GROUND LEVEL Elevation 4586'	
Log Measured From KELLY BUSHING = 12'		Log Measured From KELLY BUSHING	
Drilling Measured From KELLY BUSHING		Elevation K.B. 4598' D.F. 4697' G.L. 4586'	

Date	30 JULY 2011									
Run Number	ONE									
Depth Driller	7256'									
Depth Logger	7256'									
Bottom Logged Interval	7256'									
Top Log Interval	4600'									
Open Hole Size	4.5"									
Type Fluid	WATER									
Density / Viscosity	~8.3#									
Max. Recorded Temp.	250 DEG F									
Estimated Cement Top	4830'									
Time Well Ready	N/A									
Time Logger on Bottom	N/A									
Equipment Number	10901 PRA 10									
Location	AULT, CO									
Recorded By	Z.EMICK									
Witnessed By	T.MAJORS									
Borehole Record										
Run Number	Bit	From	To	Size	Tubing Record		Weight	From	To	
ONE	12.25"	0'	820'							
TWO	8.875"	0'	7270'							
Casing Record	Size	Wgt/Ft		Top		Bottom				
Surface String	8.625"	24#		0'		800'				
Prot. String										
Production String	4.5"	11.6#		0'		7256'				
Liner										

<<< Fold Here >>>

All interpretations are opinions based on inferences from electrical or other measurements and we cannot and do not guarantee the accuracy or correctness of any interpretation, and we shall not, except in the case of gross or willful negligence on our part, be liable or responsible for any loss, costs, damages, or expenses incurred or sustained by anyone resulting from any interpretation made by any of our officers, agents or employees. These interpretations are also subject to our general terms and conditions set out in our current Price Schedule.

Comments

LOG CORRELATED TO PSI HIGH RESOLUTION INDUCTION LOG DATED 15 JULY 2011
SHORT JOINT 6221'-6244'

WE APPRECIATE YOUR BUSINESS, MESA WIRELINE LLC, GRAND JUNCTION CO. (970) 257-0458

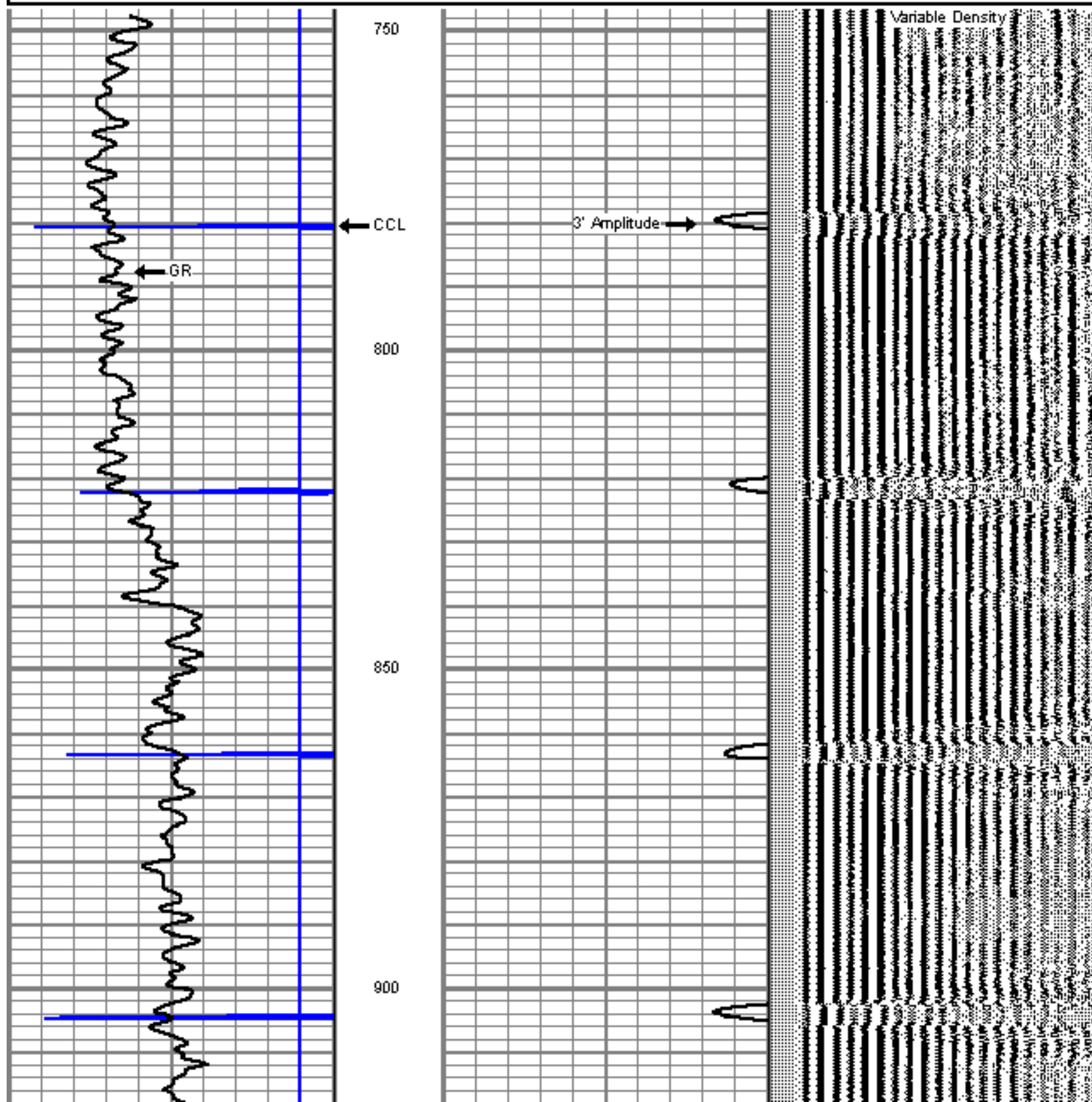


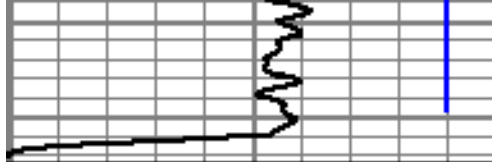
TOP REPEAT PASS

Database File: krner 8-2-25.db
 Dataset Pathname: pass7
 Presentation Format: cbl01
 Dataset Creation: Sat Jul 30 09:27:48 2011 by Log Std Casedhole 09061
 Charted by: Depth in Feet scaled 1:240

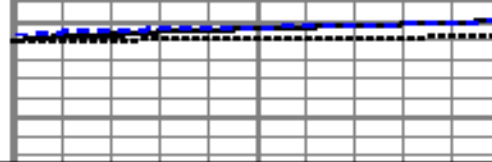
9	Collar Locator	-1
0	Gamma Ray (GAPI)	150
0	Line Speed (ft/min)	100

0	Amplified Amplitude (mV)	10	200	Variable Density	1200
0	Amplitude (mV)	100			
0	Travel Time (usec)	300			





9	Collar Locator	-1
0	Gamma Ray (GAPI)	150
0	Line Speed (ft/min)	100



0	Amplified Amplitude (mV)	10
0	Amplitude (mV)	100
0	Travel Time (usec)	300



200	Variable Density	1200
-----	------------------	------



MAIN PASS

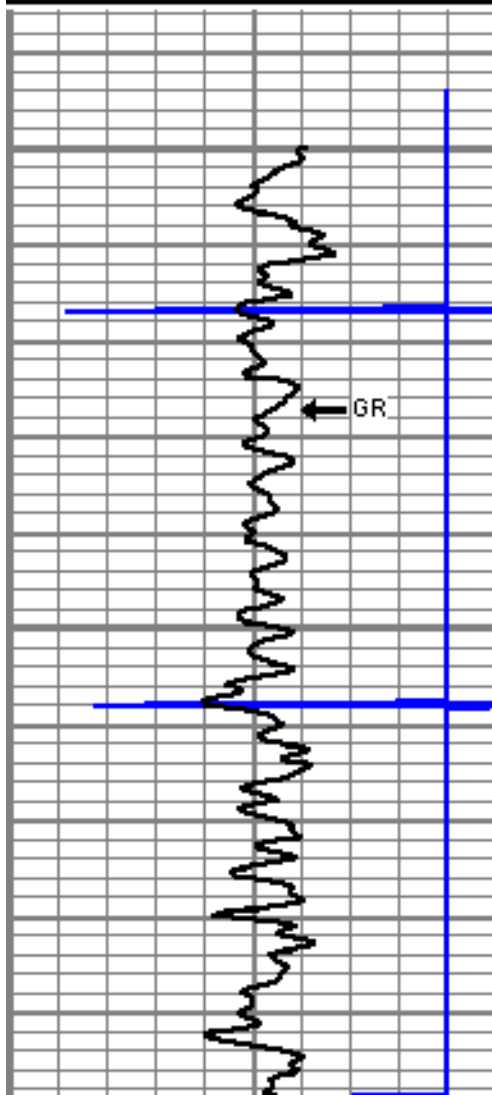
5" = 100'

Database File: krumer 8-2-25.db
 Dataset Pathname: pass6oh
 Presentation Format: cbl01
 Dataset Creation: Sat Jul 30 17:47:02 2011
 Charted by: Depth in Feet scaled 1:240

9	Collar Locator	-1
0	Gamma Ray (GAPI)	150
0	LTEN (lb)	100

0	Amplified Amplitude (mV)	10
0	Amplitude (mV)	100
0	Travel Time (usec)	300

200	Variable Density	1200
-----	------------------	------

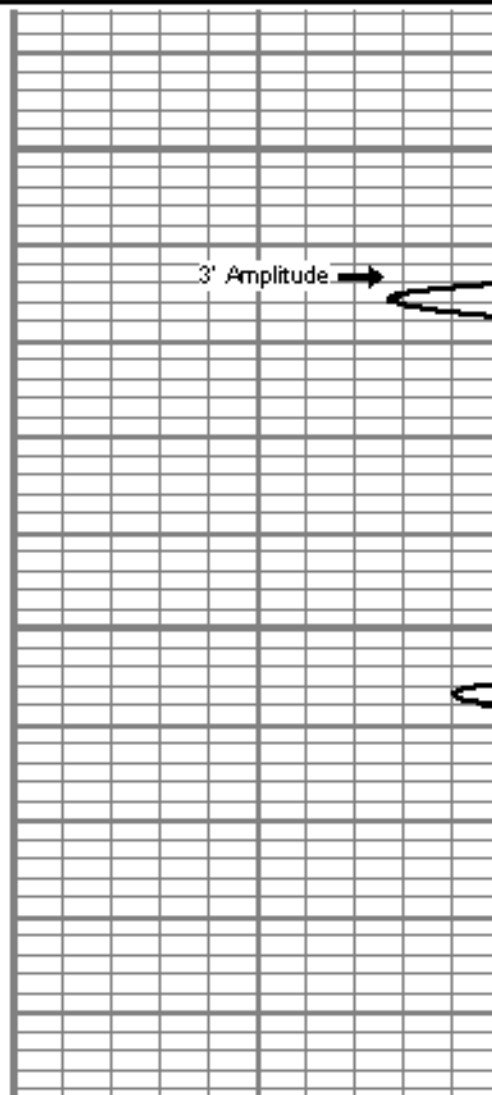


4600

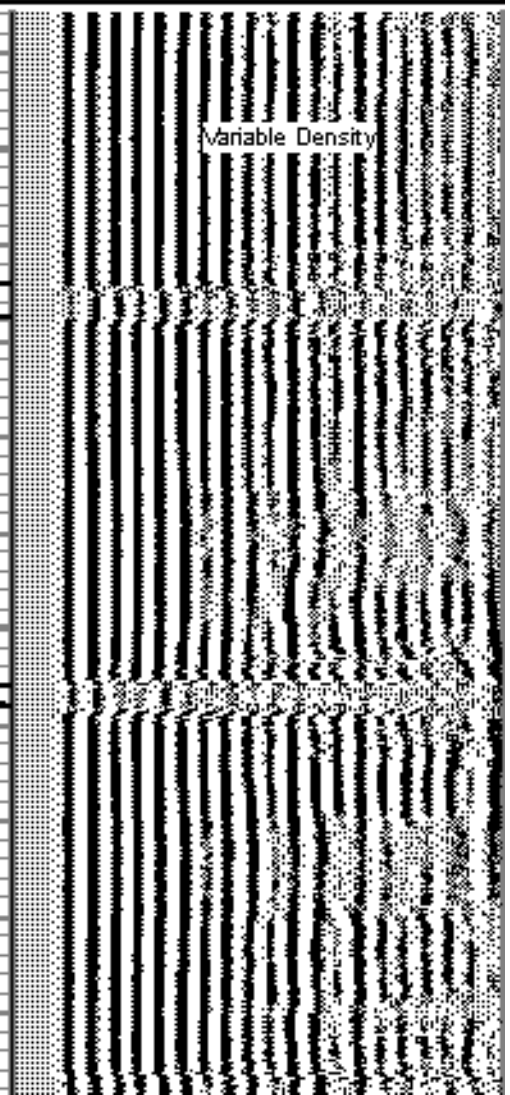
← CCL

← GR

4650



3' Amplitude →



Variable Density

4700

4750

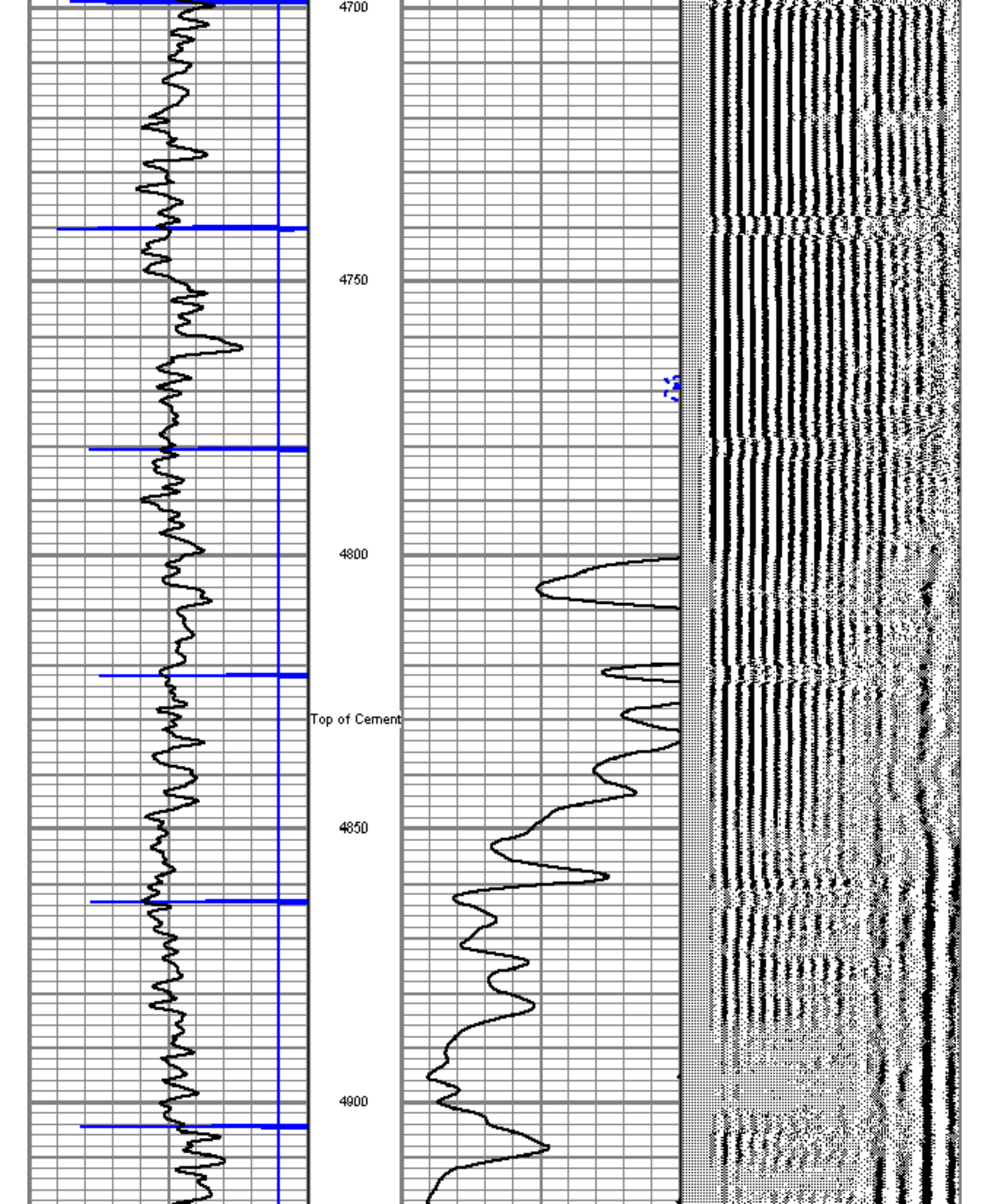
4800

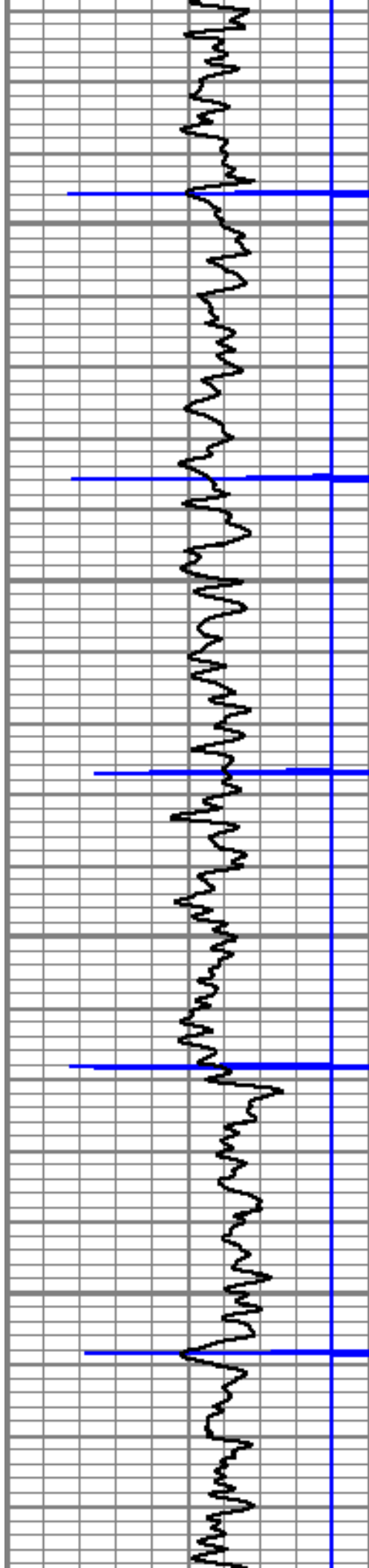
Top of Cement

4850

4900

2.63



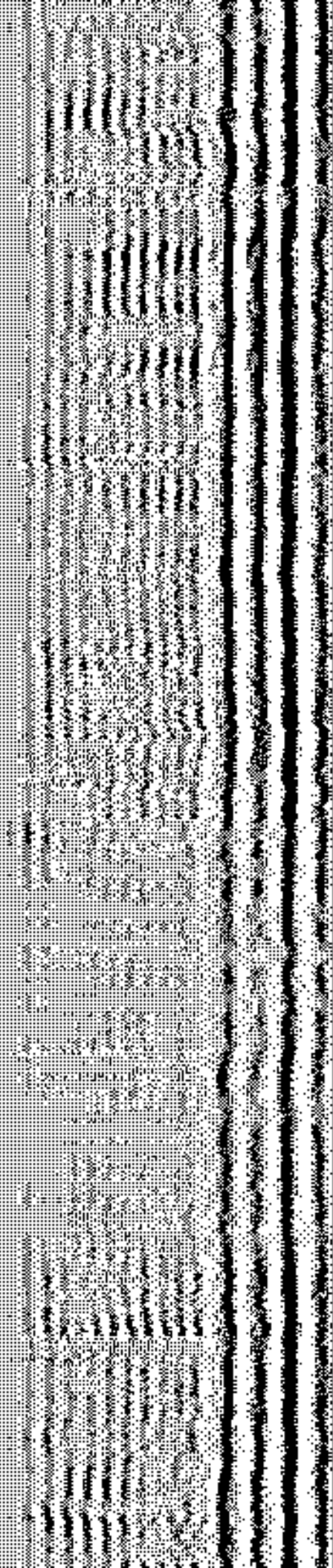
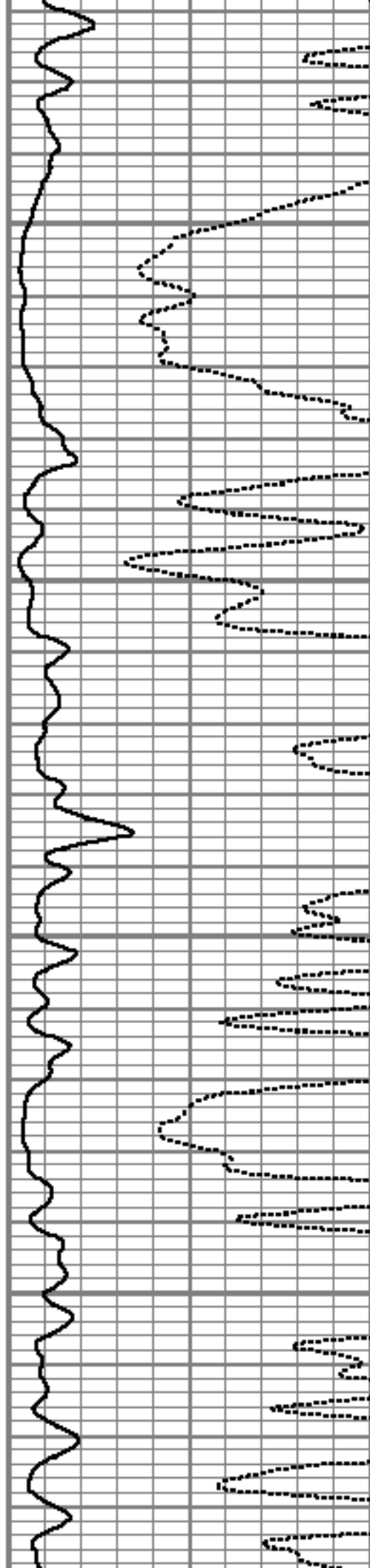


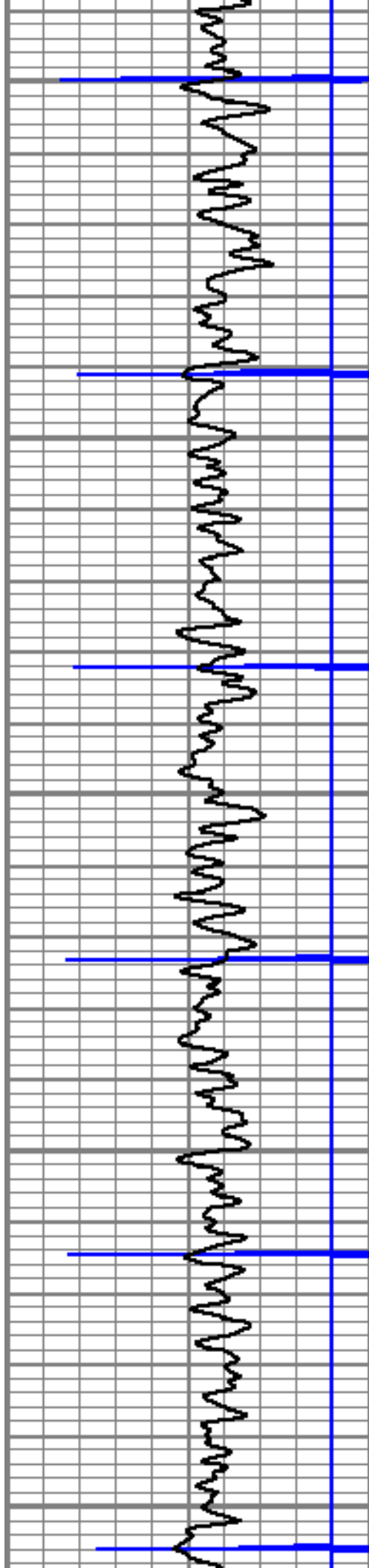
4950

5000

5050

5100





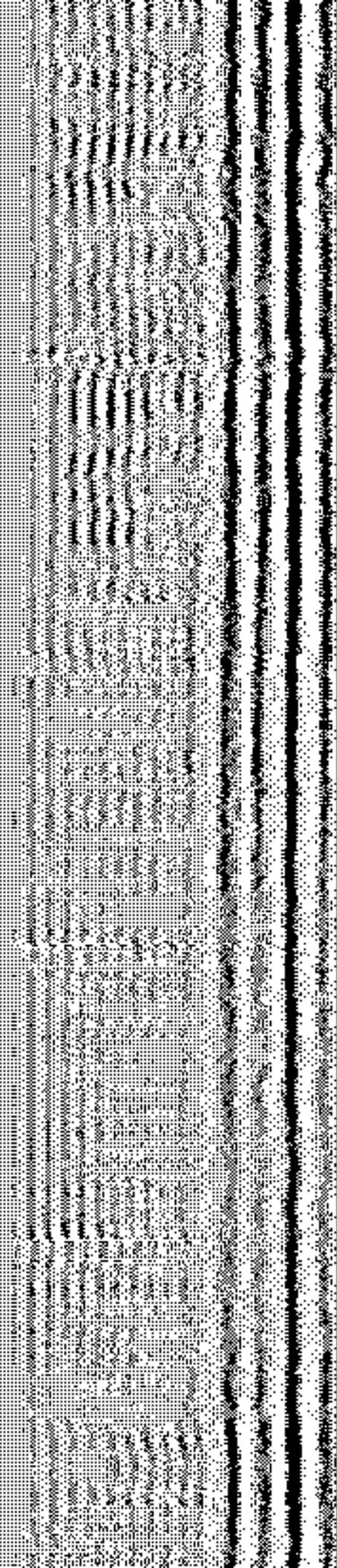
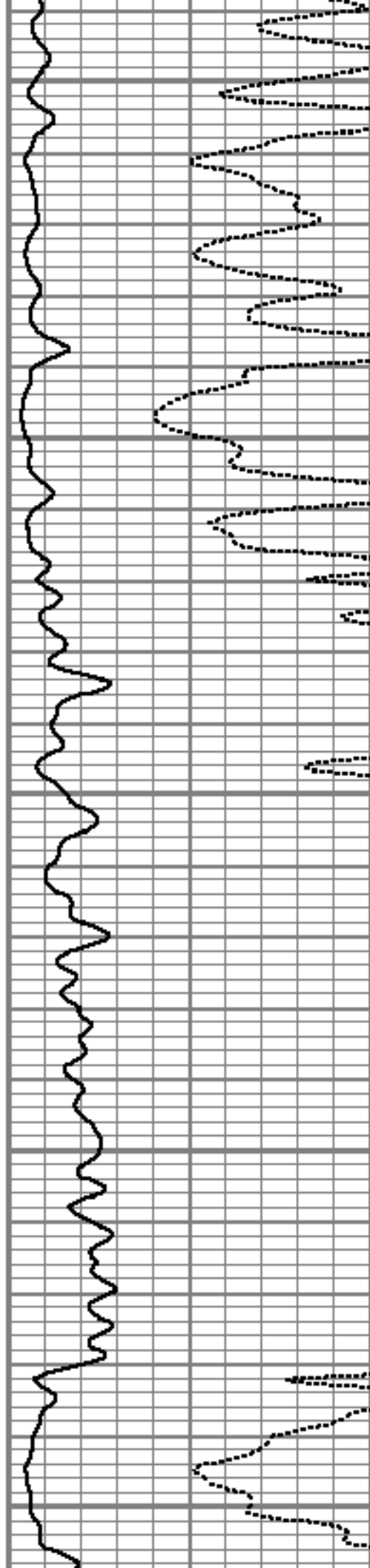
5150

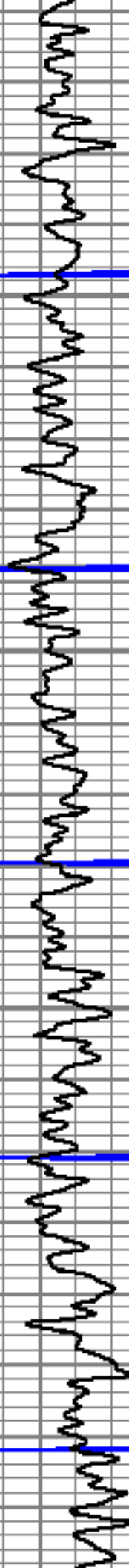
5200

5250

5300

5350



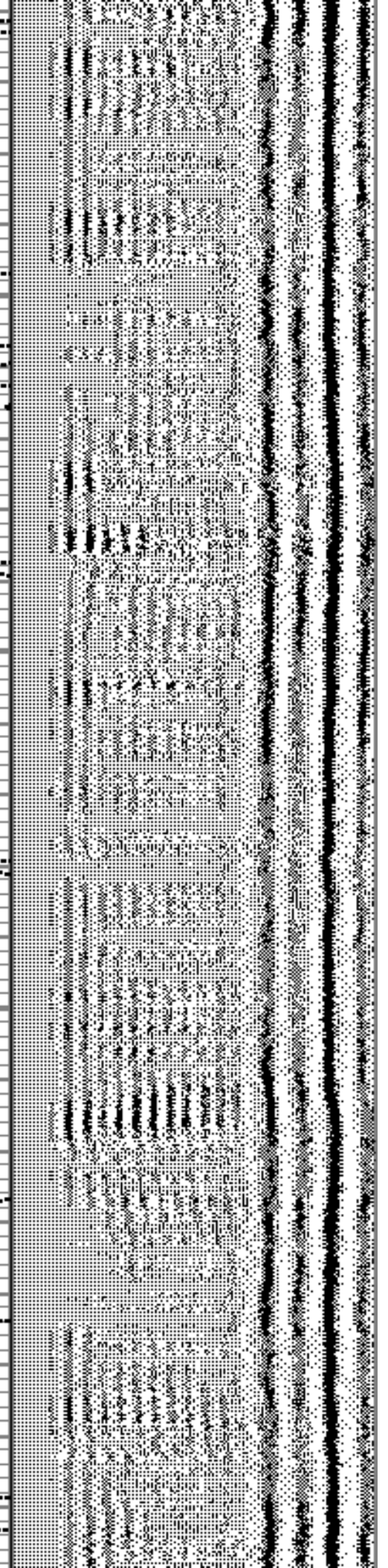
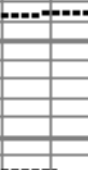
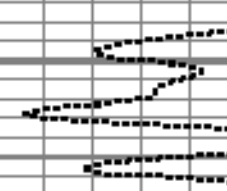


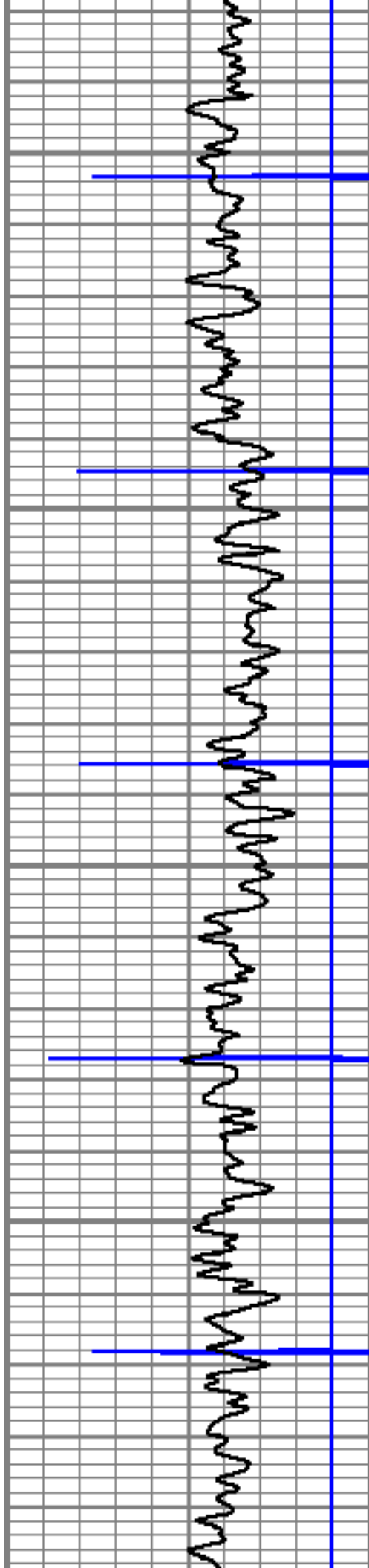
5400

5450

5500

5550



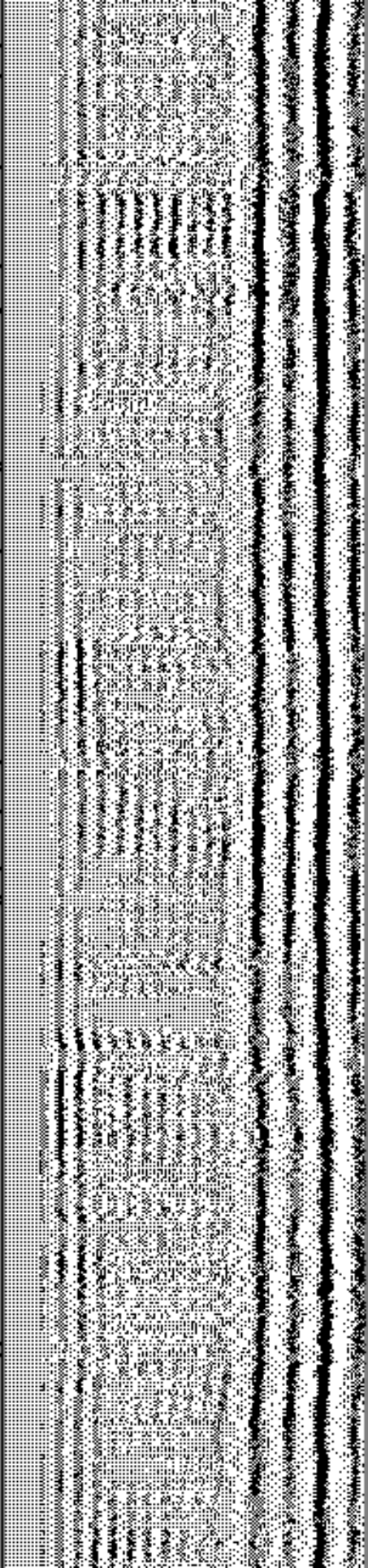
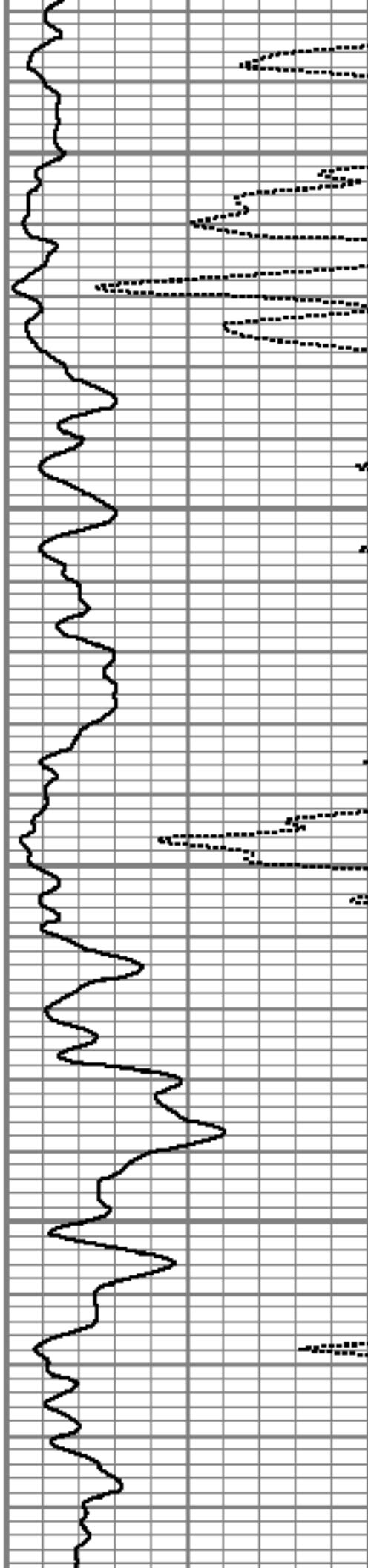


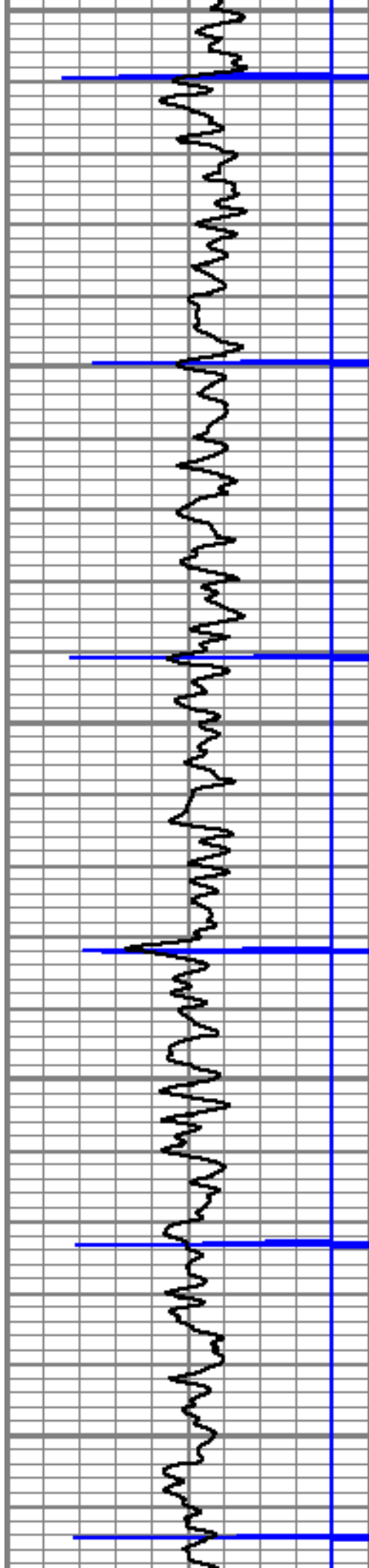
5600

5650

5700

5750





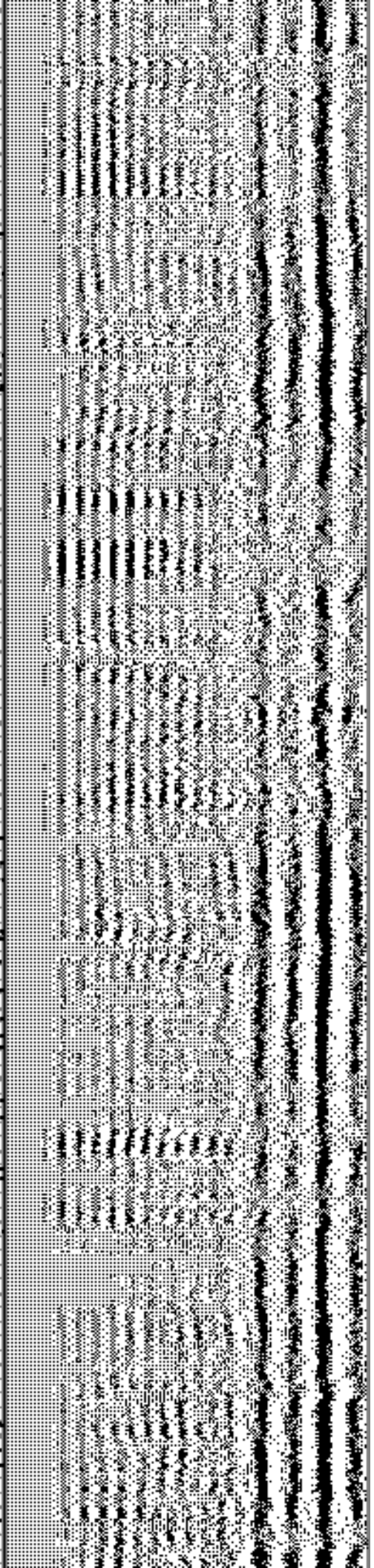
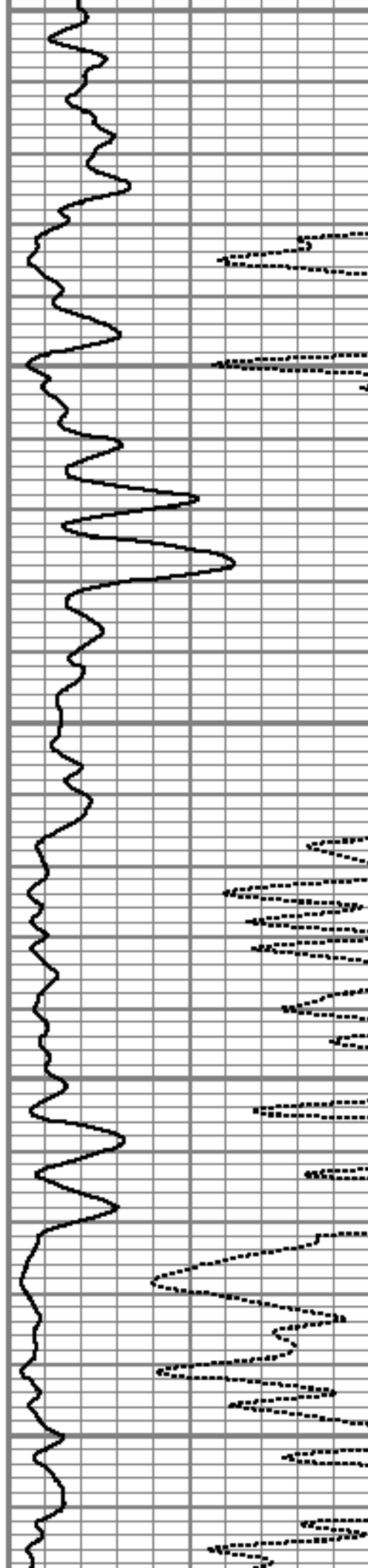
5800

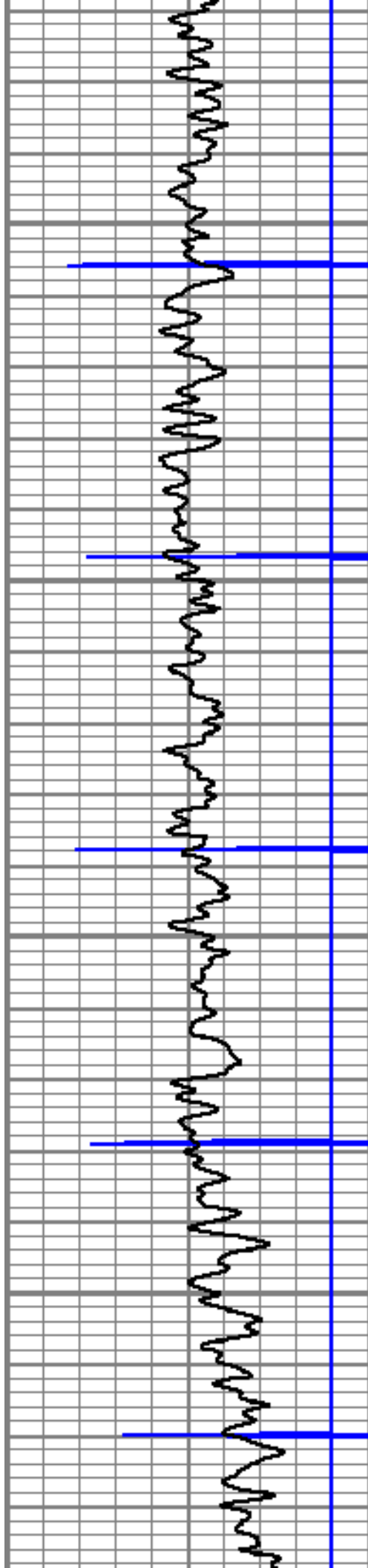
5850

5900

5950

6000





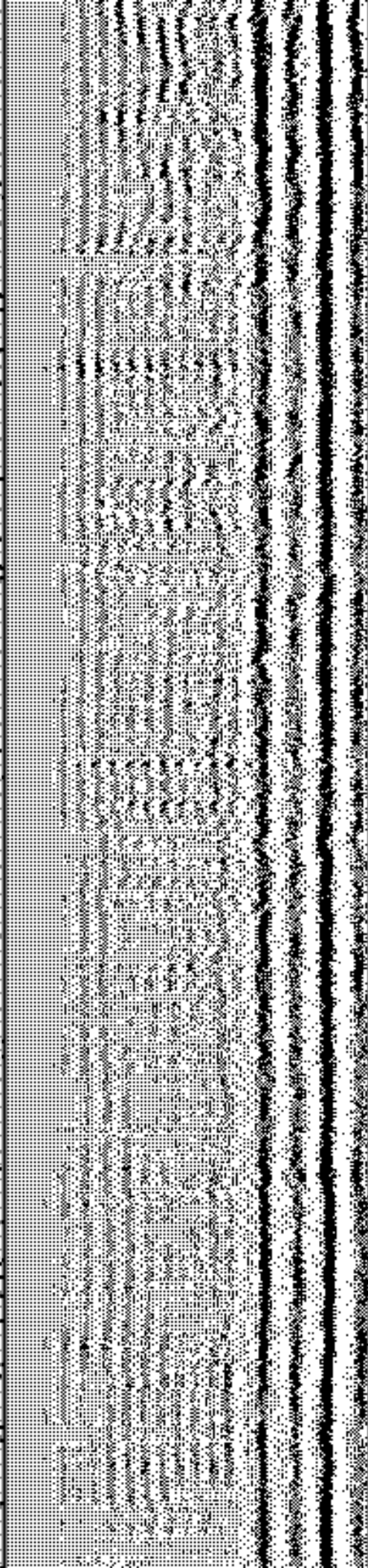
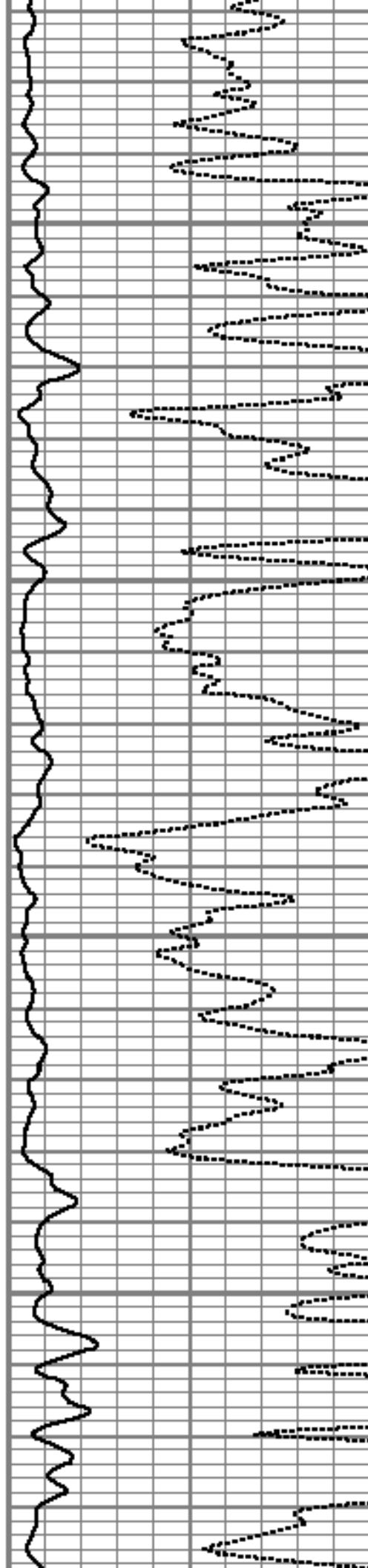
6050

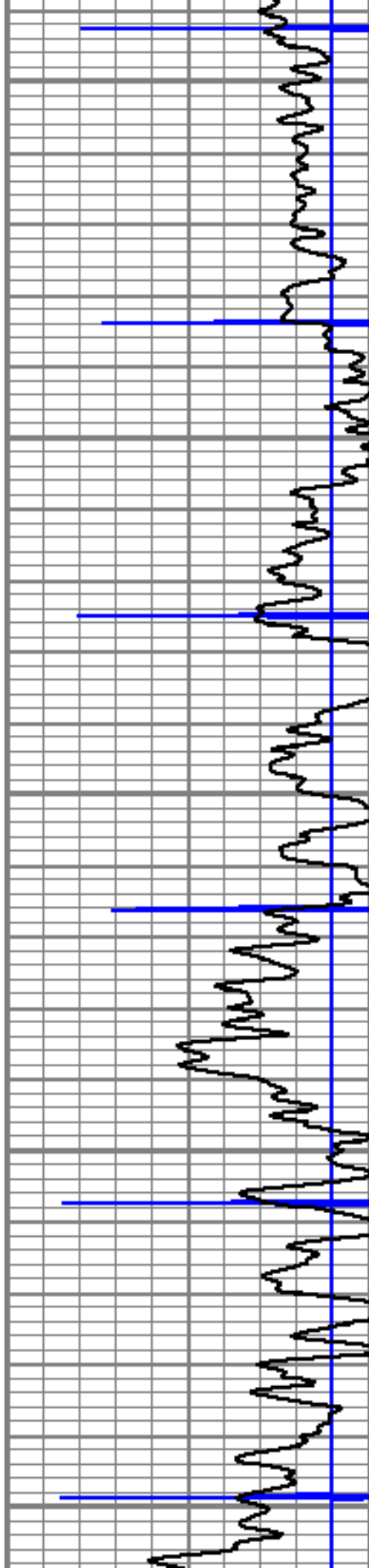
6100

6150

6200

Short Joint





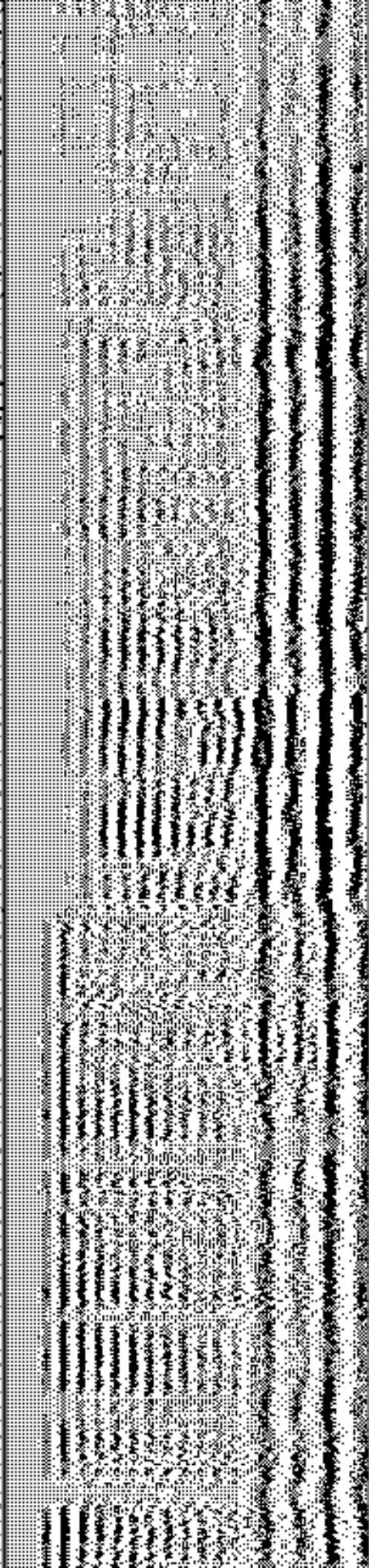
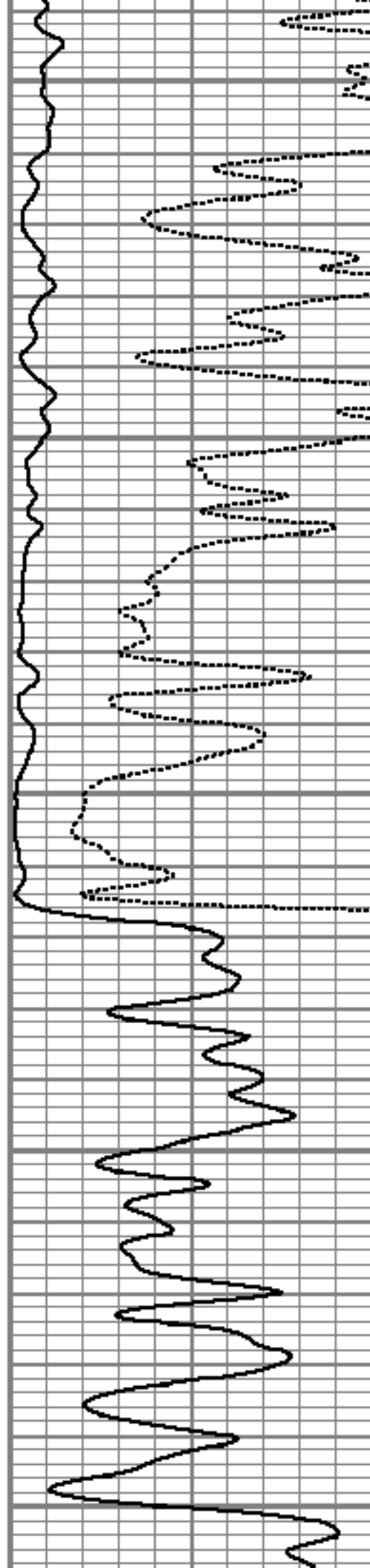
6250

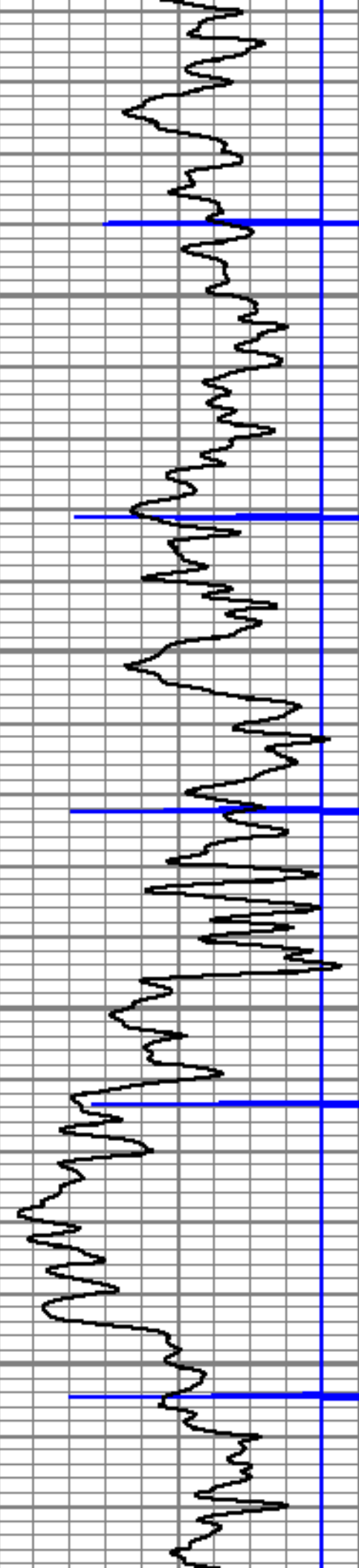
6300

6350

6400

6450



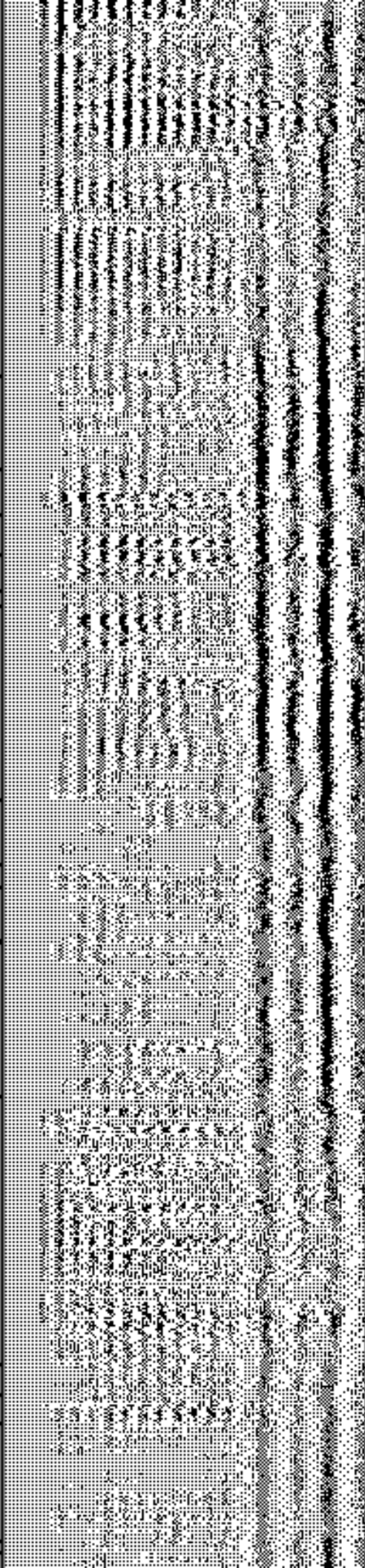
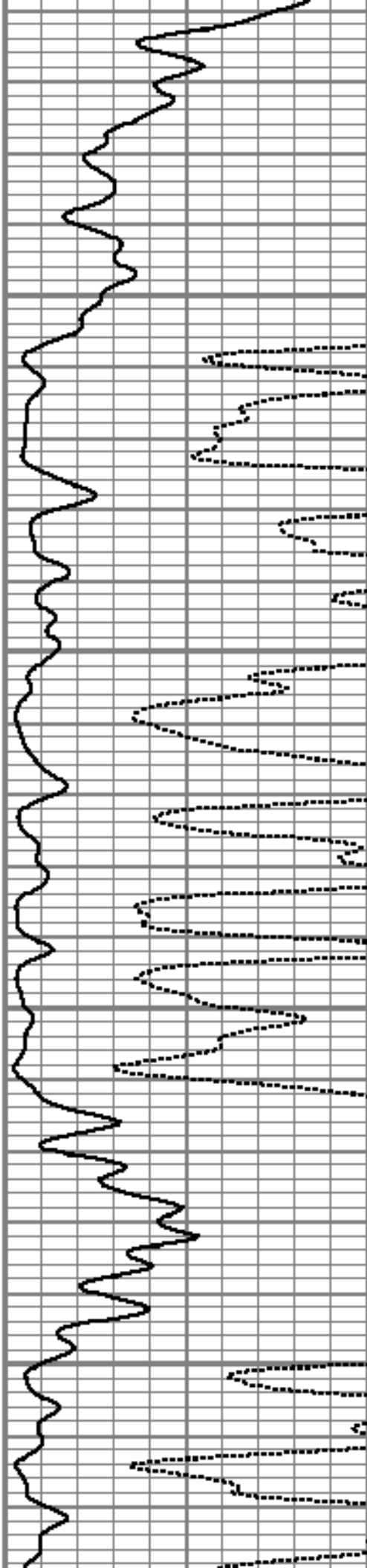


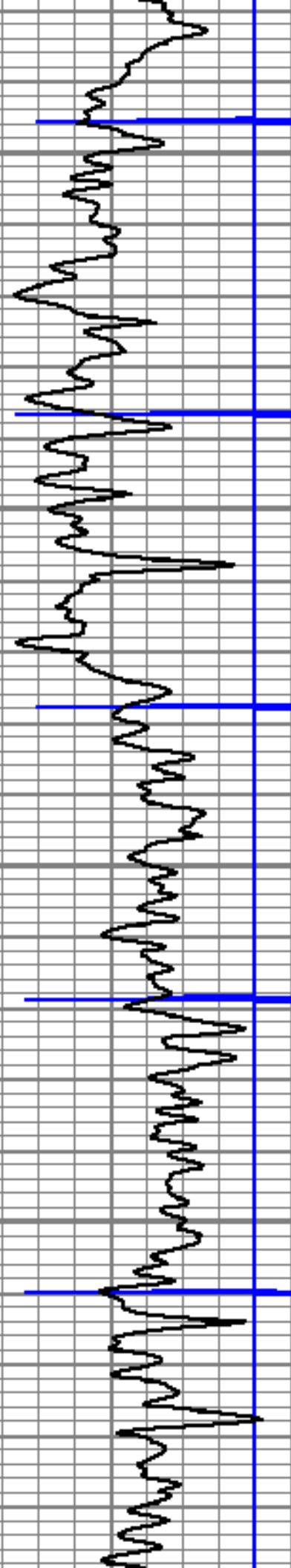
6500

6550

6600

6650



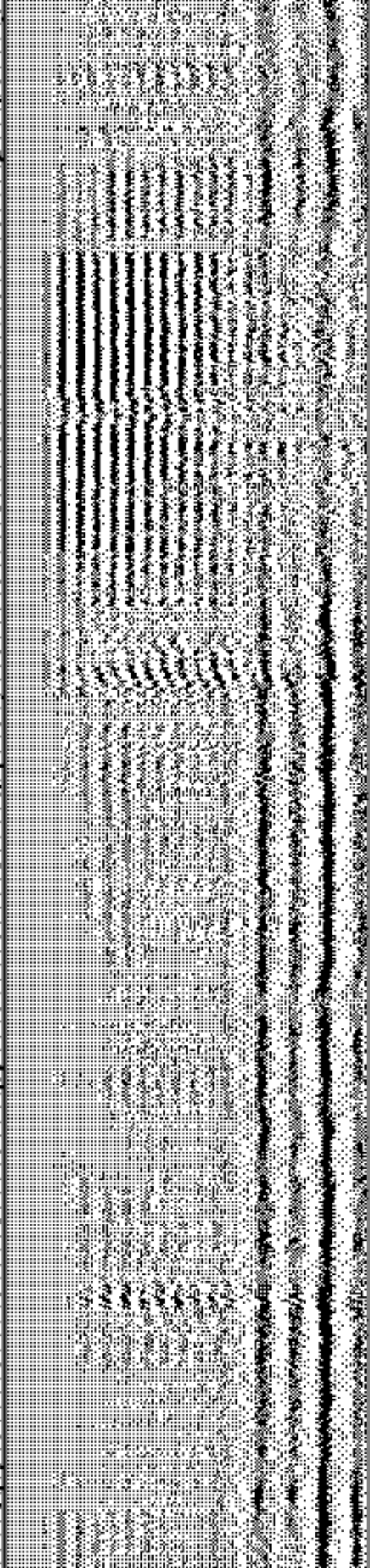
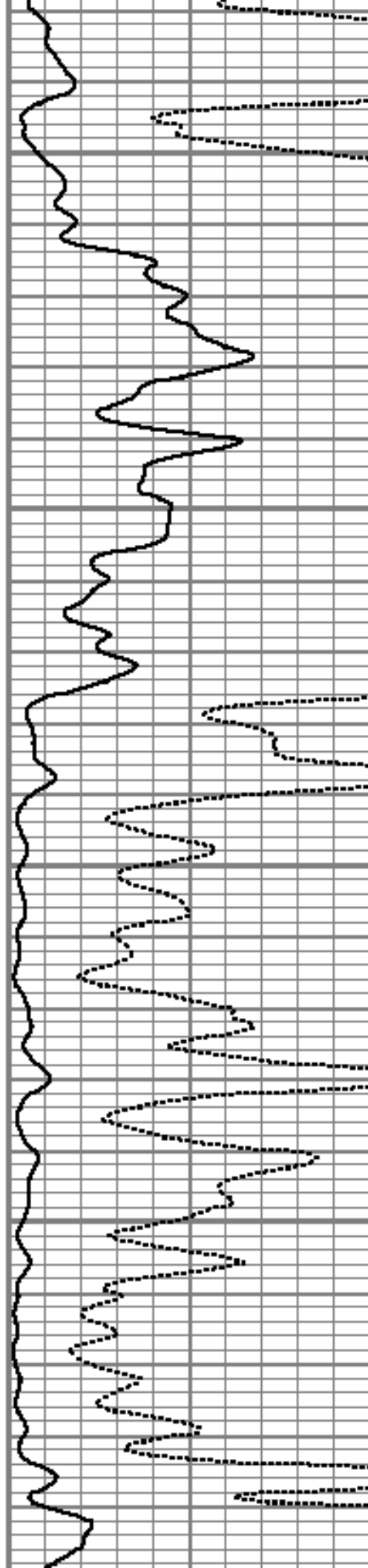


6700

6750

6800

6850



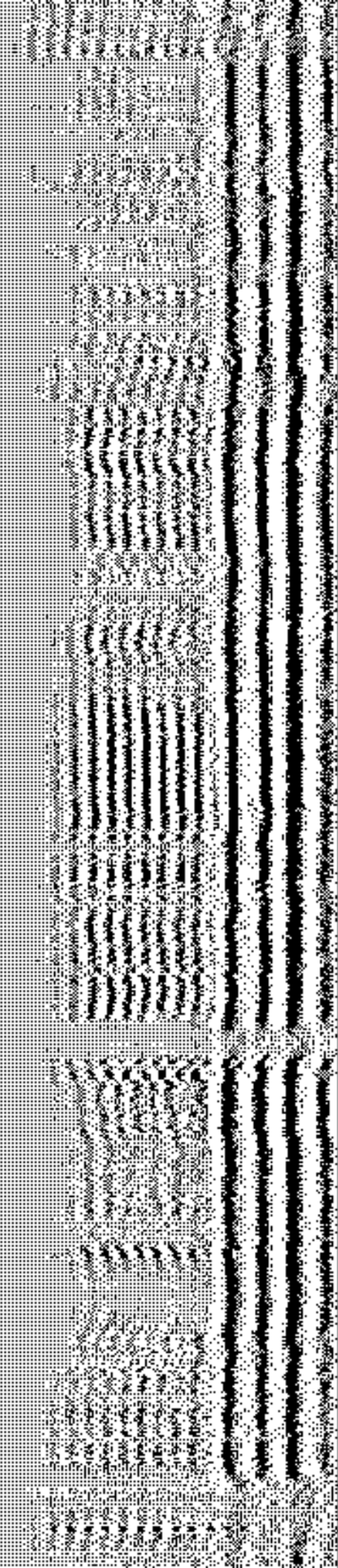
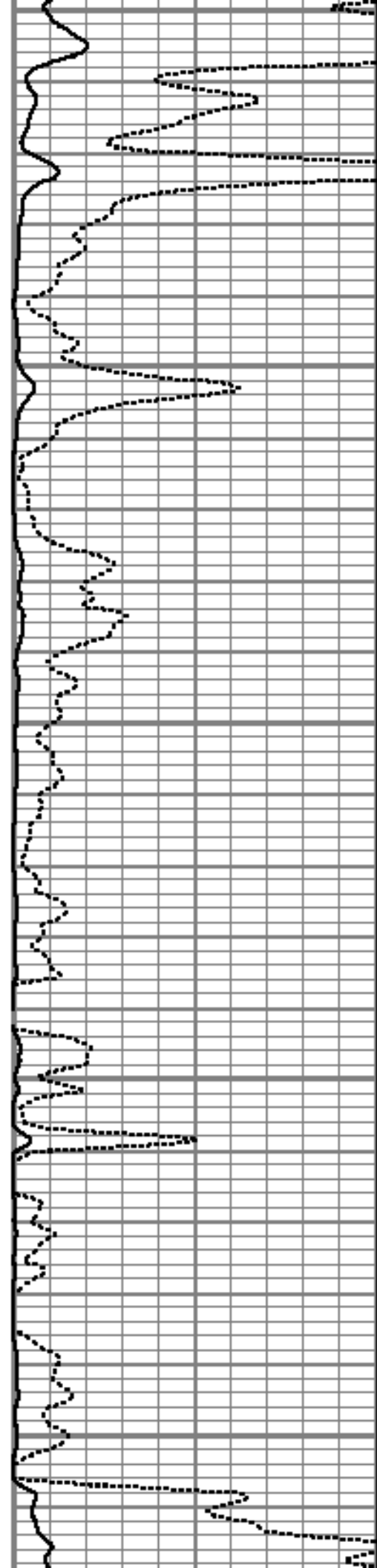
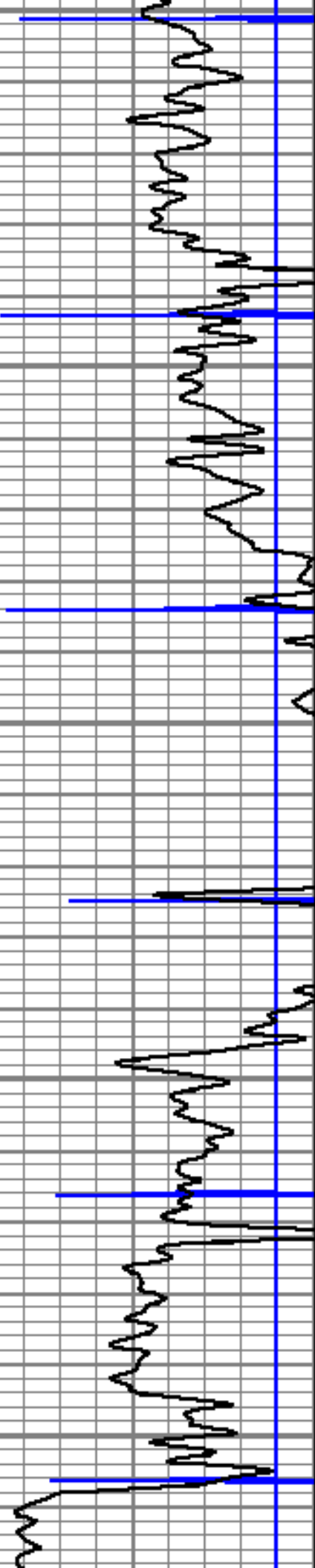
6900

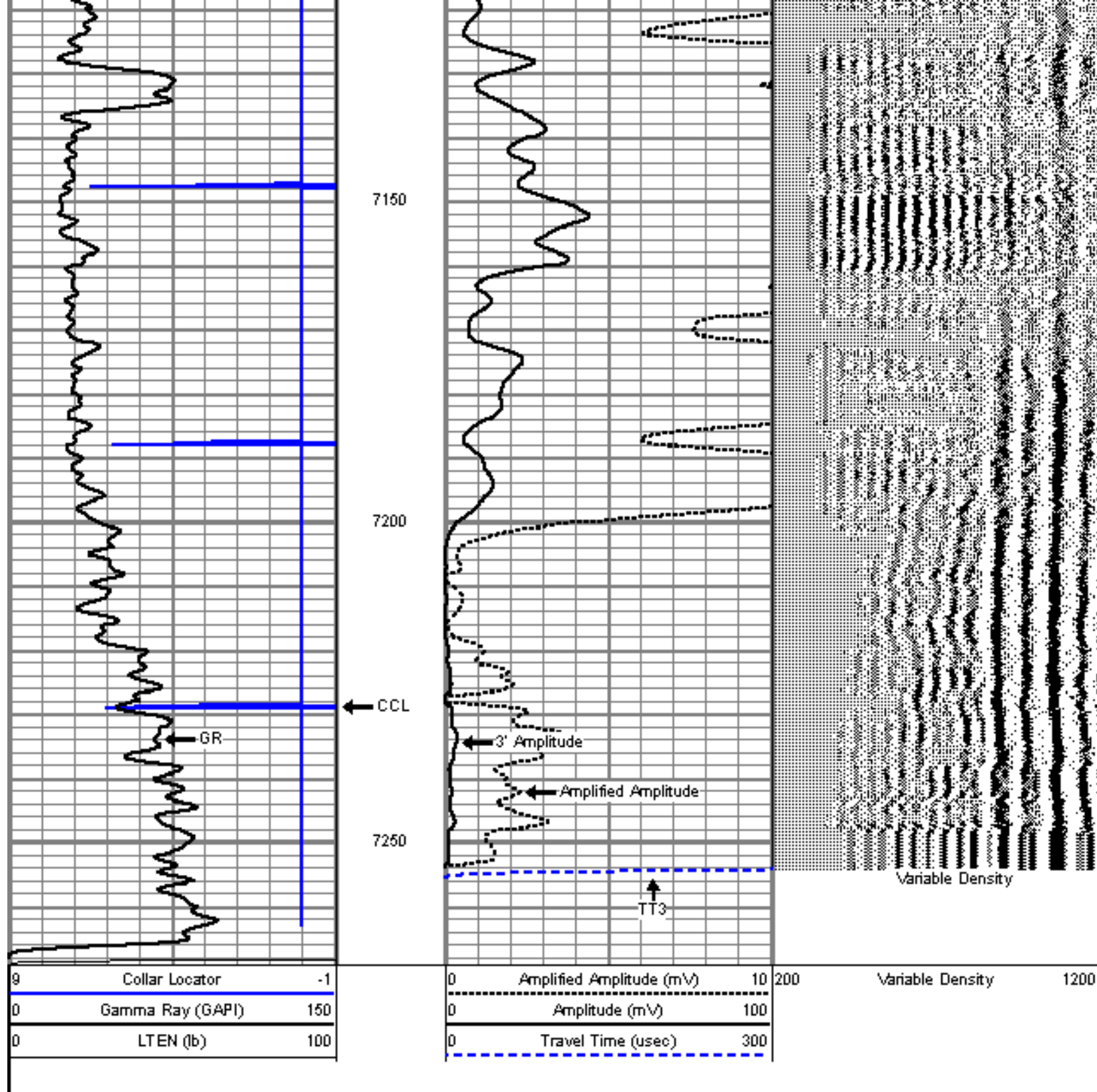
6950

7000

7050

7100





REPEAT PASS

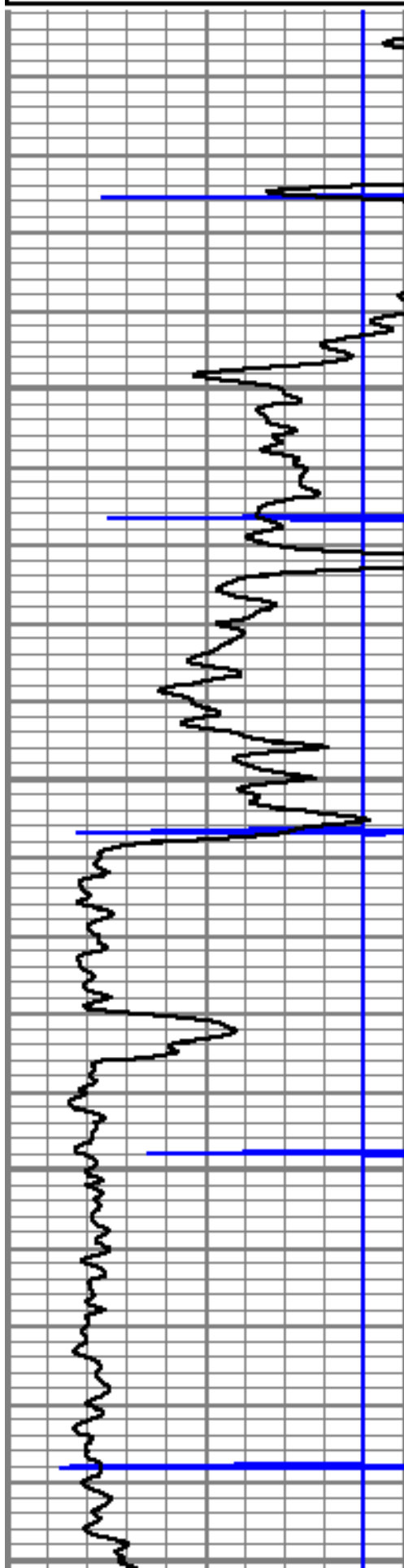
5" = 100'

Database File: krunker 8-2-25.db
 Dataset Pathname: pass5
 Presentation Format: cbl01
 Dataset Creation: Sat Jul 30 08:17:28 2011 by Log Std Casedhole 09061
 Charted by: Depth in Feet scaled 1:240

9	Collar Locator	-1
0	Gamma Ray (GAPI)	150
0	Line Speed (ft/min)	100

0	Amplified Amplitude (mV)	10
0	Amplitude (mV)	100
0	Travel Time (usec)	300

200 Variable Density 1200

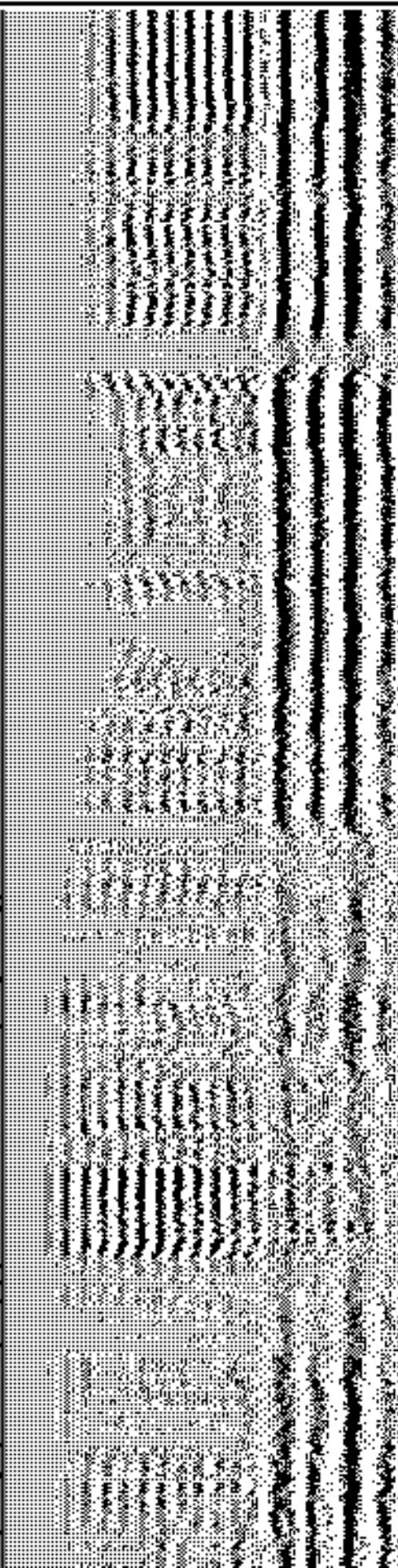
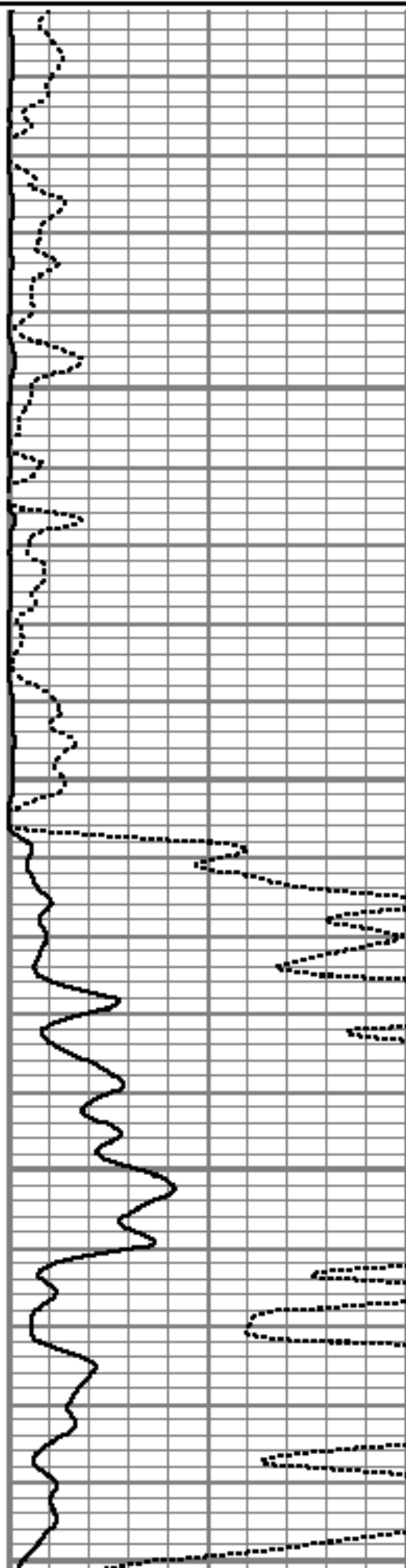


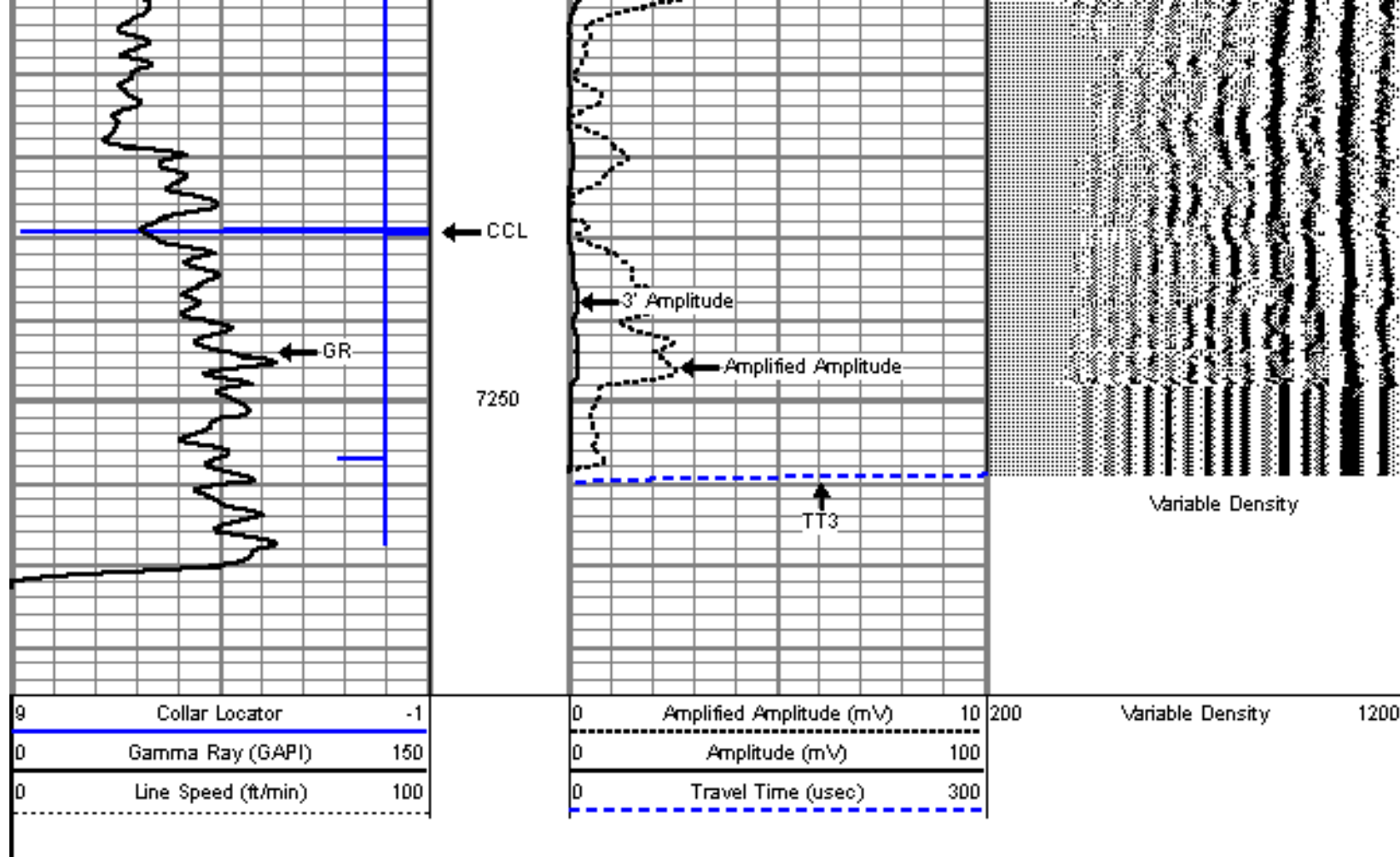
7050

7100

7150

7200





Company ENCANA OIL & GAS (USA) INC
 Well KUNER 8-2-25
 Field WATTENBERG
 County WELD
 State COLORADO