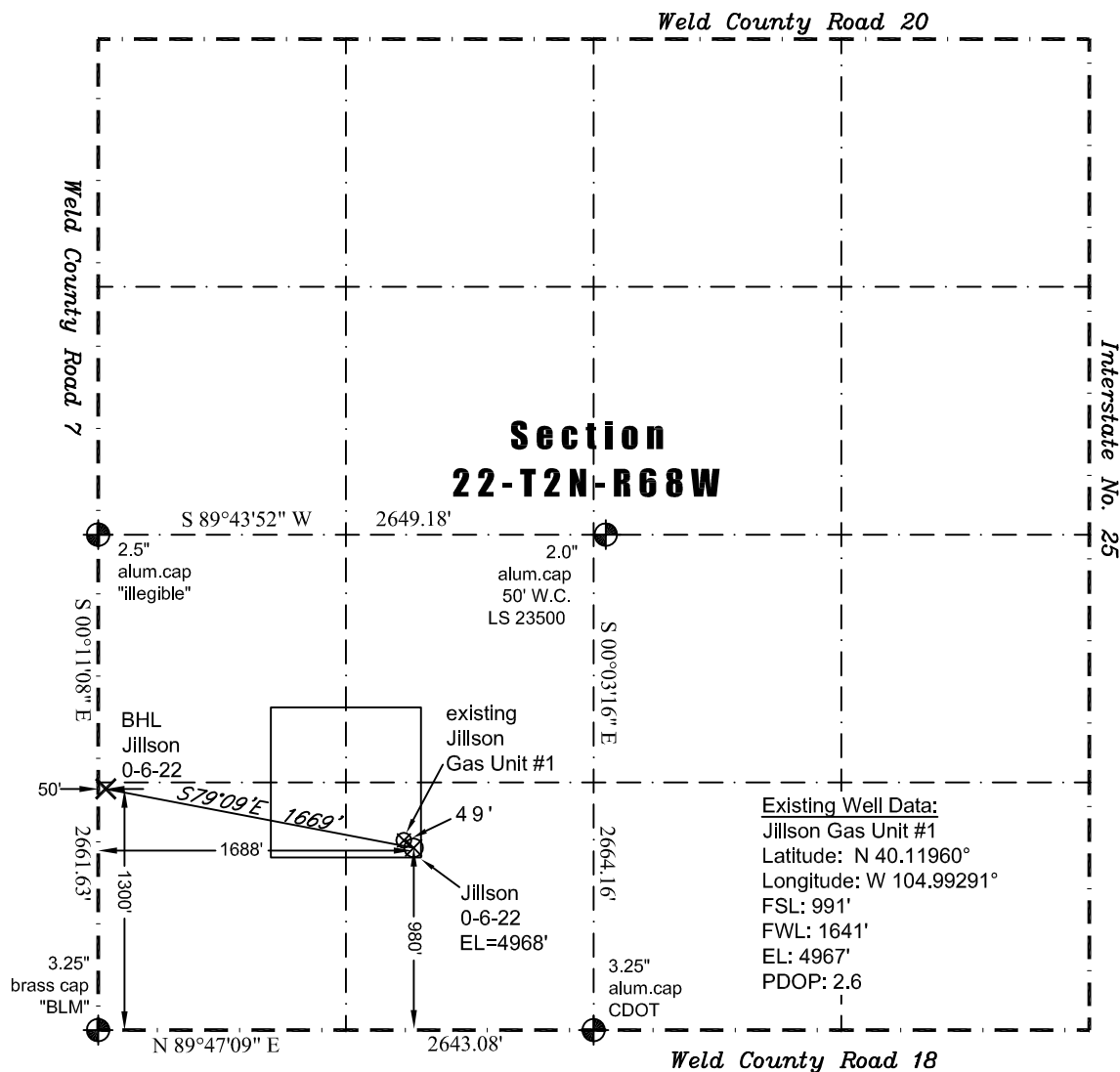


PLS Group, LLC  
109 Coronado Ct. - Bldg. 7  
Fort Collins, Colorado 80525  
P. 970-282-3446 Fx. 970-377-6767

# WELL LOCATION CERTIFICATE

THIS MAP DOES NOT REPRESENT A BOUNDARY SURVEY



Scale 1" = 1000'  
1000'  
approximate scale

LEGEND  
— found survey monument  
(c) — calculated dimension

In accordance with a request from Jennifer Lind of EnCana Oil & Gas (USA) Inc., PLS Group, LLC has determined the location of the **Jillson 0-6-22** well site to be SHL: 980' FSL and 1688' FWL, (BHL 1300' FSL and 50' FWL), as measured at ninety (90) degrees from the section lines of Section 22, Township 2 North, Range 68 West of the 6th Principal Meridian, Weld County Colorado.

#### Proposed Surface Hole Data:

Latitude: N 40.11957° (BHL 40.12045°)  
Longitude: W 104.99274° (BHL 104.99860°)  
PDOP: 1.6

#### Nearest:

Building 1064' east	Above Ground Utility 1064' southwest
Public Road 969' south	Railroad 20,500' south
Property Line 352' north	Well Window: SHL is 34' inside
Existing Well: Jillson Gas Unit #1 49' northwest	

#### Notes:

- 1) Bearings based on NAD 83 Colorado North State Plane Coordinates using RTK GPS observations taken 8/26/10 by operator Craig Burke.
- 2) Conversion factor to ground (1.000274028)
- 3) Elevations based on NAVD 88 GPS heights and Geoid 2003 corrections.
- 4) See improvement map for visible improvements within 400 feet.
- 5) The location falls on a cultivated field.

**NOTICE:** According to Colorado law you must commence any legal action based upon any defect in this W.L.C. within three years after you first discover such defect. In no event may any action based upon any defect in this W.L.C. be commenced more than ten years from this said date of the certification shown hereon.

I hereby certify that this Well Location Certificate was prepared by me or under my direct supervision on 8/30/2011 for and on behalf of EnCana Oil & Gas (USA) Inc. That it is not a Land Survey Plat or an Improvement Survey Plat and that it is not to be relied upon for establishment of fences, buildings, or other future improvement lines.

John Robert McGehee LS#38219  
Well: Jillson 0-6-22 WLC