

OPERATOR: WIEPKING - FULLERTON ENERGY LLC
WELL NAME: NAPALI 2

TEST NO: 2
TICKET NO: 2862

Contractor Murfin Drilling
Rig No. 25
Spot SE/SW
Sec 17
Twp 10 S
Rng 55 W
Field Great Plains
County Lincoln
State Colorado
Elevation 5195' KB - 5185' GL
Formation Cherokee "A"

Surface Choke 1"
Bottom Choke 5/8"
Hole Size 7 7/8"
Core Hole Size
DP Size & Wt 4 1/2" 16.60
Wt Pipe
ID of DC 2 1/4"
Length of DC 542'
Total Depth 7110'
Type of Test Open Hole Dst
Interval 7074'- 7110'

Mud Type Chemical
Weight 8.8
Viscosity 77
Water Loss 7.2
Filter Cake
RW 3.5 @ 82 Deg F
Chlorides 1,331 Ppm
Co. Rep. Gregg Smith
Tester Mark Green

Pipe Recovery:
180' Gassy mud w/trace of oil = 0.88 bbl.

Properties:

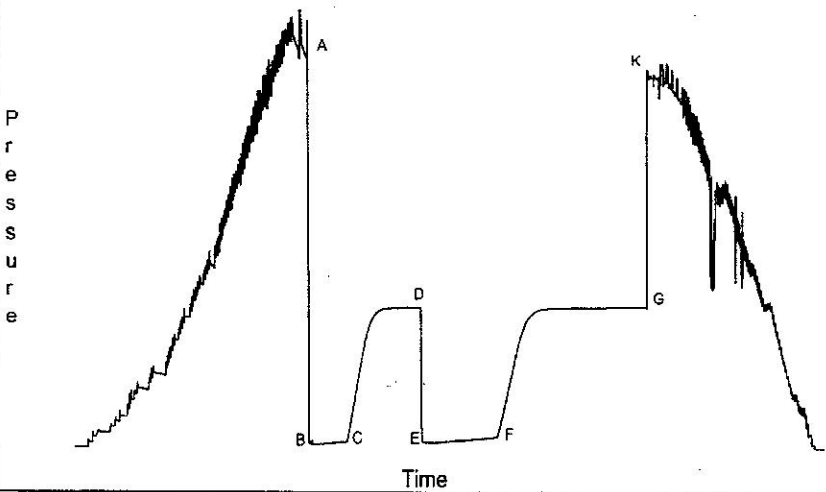
Surface blow:
Pre-Flow: Began with a 1/4" blow, increased to bottom of bucket at 4 minutes, 12.0 oz at 15 minutes and remained thru flow period.
Final Flow: Began with 24.0 oz - fluctuating slightly for 45 minutes, then decreased to 12.0 oz and remained thru flow period. Gas to surface at 55 minutes of the second flow period.

Downhole Sampler:

Pressure in Sampler 850 psig
Volume of Sampler 2050 cc
Volume of Sample 1400 cc
Oil: 600 cc
Water: 0 cc
Mud: 800 cc
Gas: 5.15 cu ft
Other: 0
Rw:
Chlorides:
Gas/Oil Ratio 1373 / 1 cu.-ft./bbl.
Gravity API @ 60 Deg F

Opened Tool @ 01:13 hrs on 06/04/2011
Reported Corrected
Flow 1 30 30 min
Shut-in 1 60 59 min
Flow 2 61 60 min
Shut-in 2 120 119 min

Downhole Pressure Chart



Downhole Pressure Data

Recorder Type JMCO Memory Recorder
No. 30024 Cap 10000 psi
Depth 7055 ft
Inside x Outside
Psi(a) Deg (f)
Initial Hydrostatic [A] 3297
Final Hydrostatic [K] 3120
Initial Flow 1 [B] 47 162
Final Flow 1 [C] 67 165
Initial Flow 2 [E] 66 167
Final Flow 2 [F] 101 170
Shut-in 1 [D] 1197 167
Shut-in 2 [G] 1197 173
Maximum Temperature 173

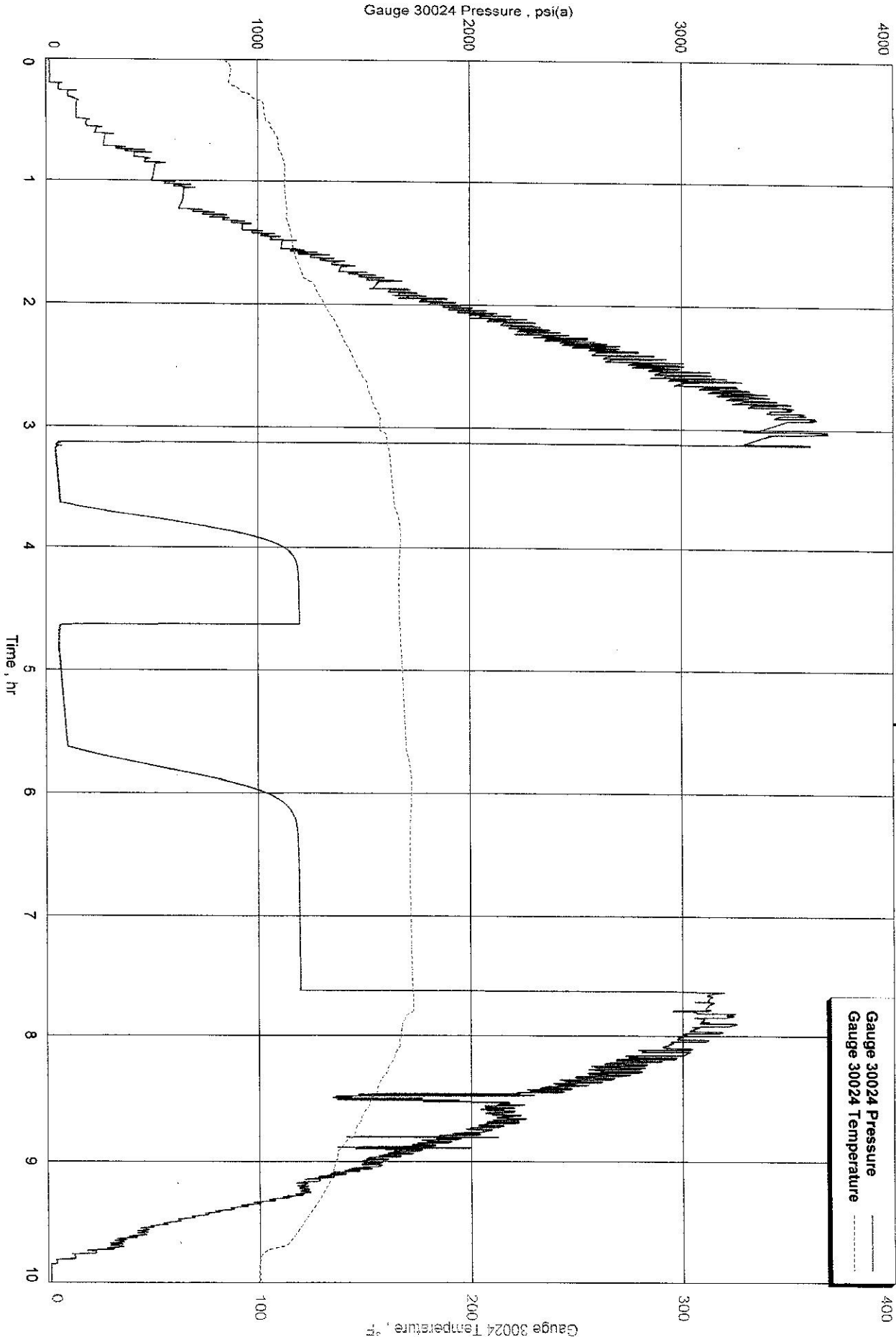
Report Prepared by: Michael Hudson



OPERATOR: WIEPKING - FULLERTON ENERGY LLC
WELL NAME: NAPALI 2
FORMATION: CHEROKEE "A"
INTERVAL: 7074'- 7110'
TEST NO: 2
DATE: 06/04/2011

Downhole Pressure/Temperature Chart

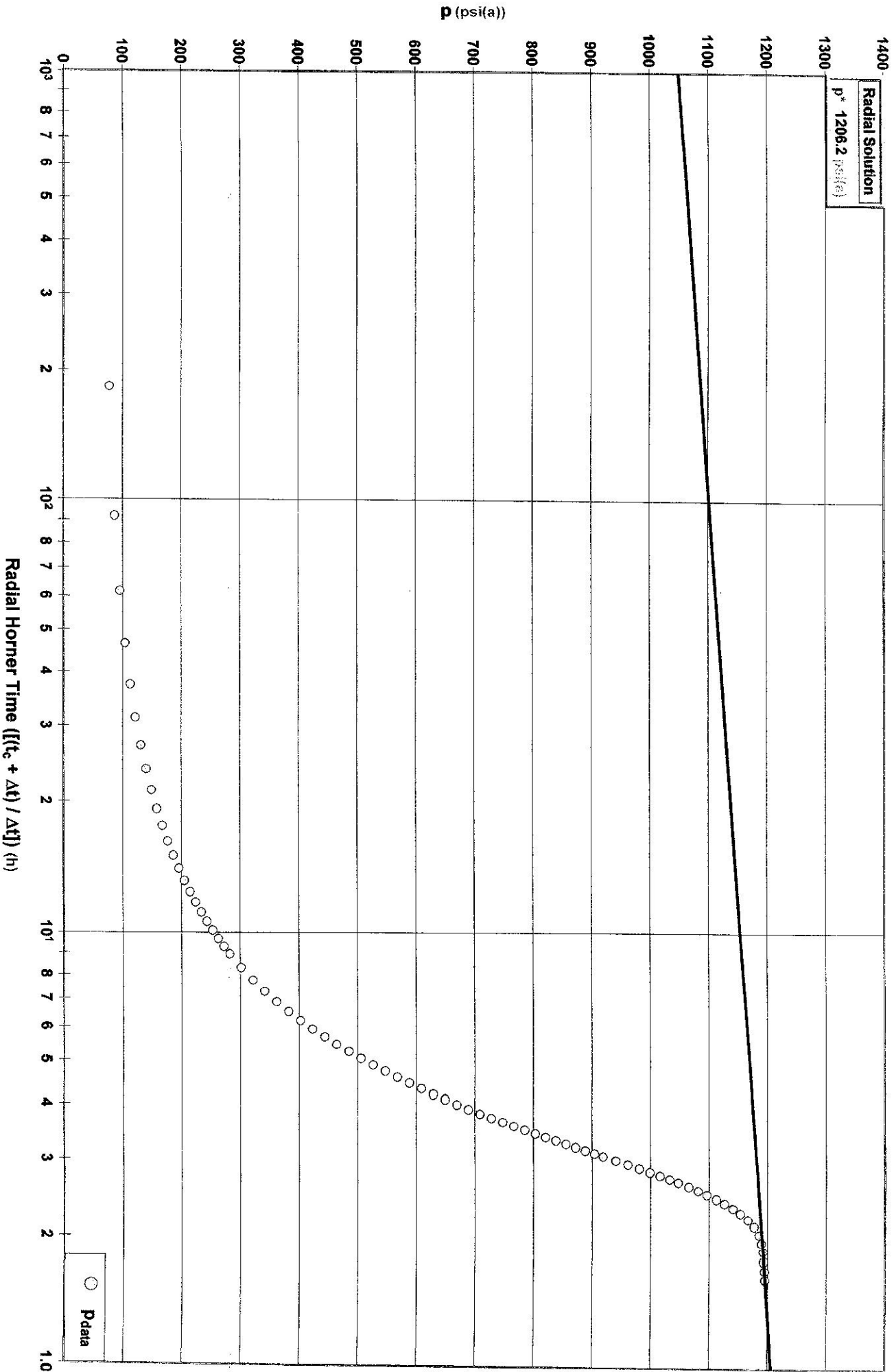
Napali 2, Dst 2
Formation: Cherokee "A"



Wierpking - Fullerton Energy LLC
Interval: 7074' - 7110'

Diagnostic Plot - Shut In 1
Radial

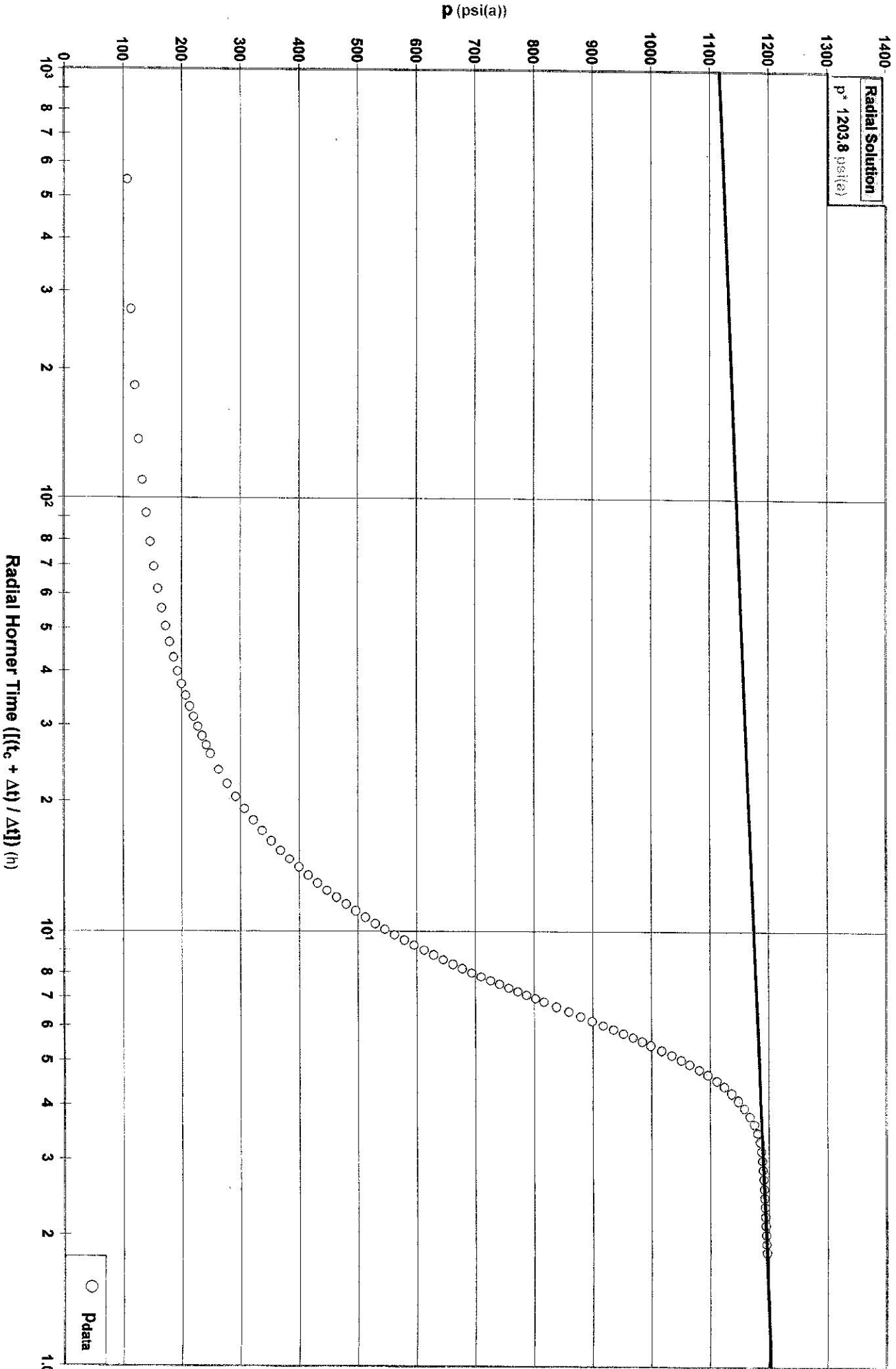
Napali 2, Dst 2
Formation: Cherokee "A"



Wiepking - Fullerton Energy LLC
Interval: 7074' - 7110'

Diagnostic Plot - Shut In 2
Radial

Napali 2, Dst 2
Formation: Cherokee "A"



Wiepking - Fullerton Energy LLC
Interval: 7074' - 7110'

Diagnostic Plot - Shut In 2
Typecurve

Napail 2, Dst 2
Formation: Cherokee "A"

