

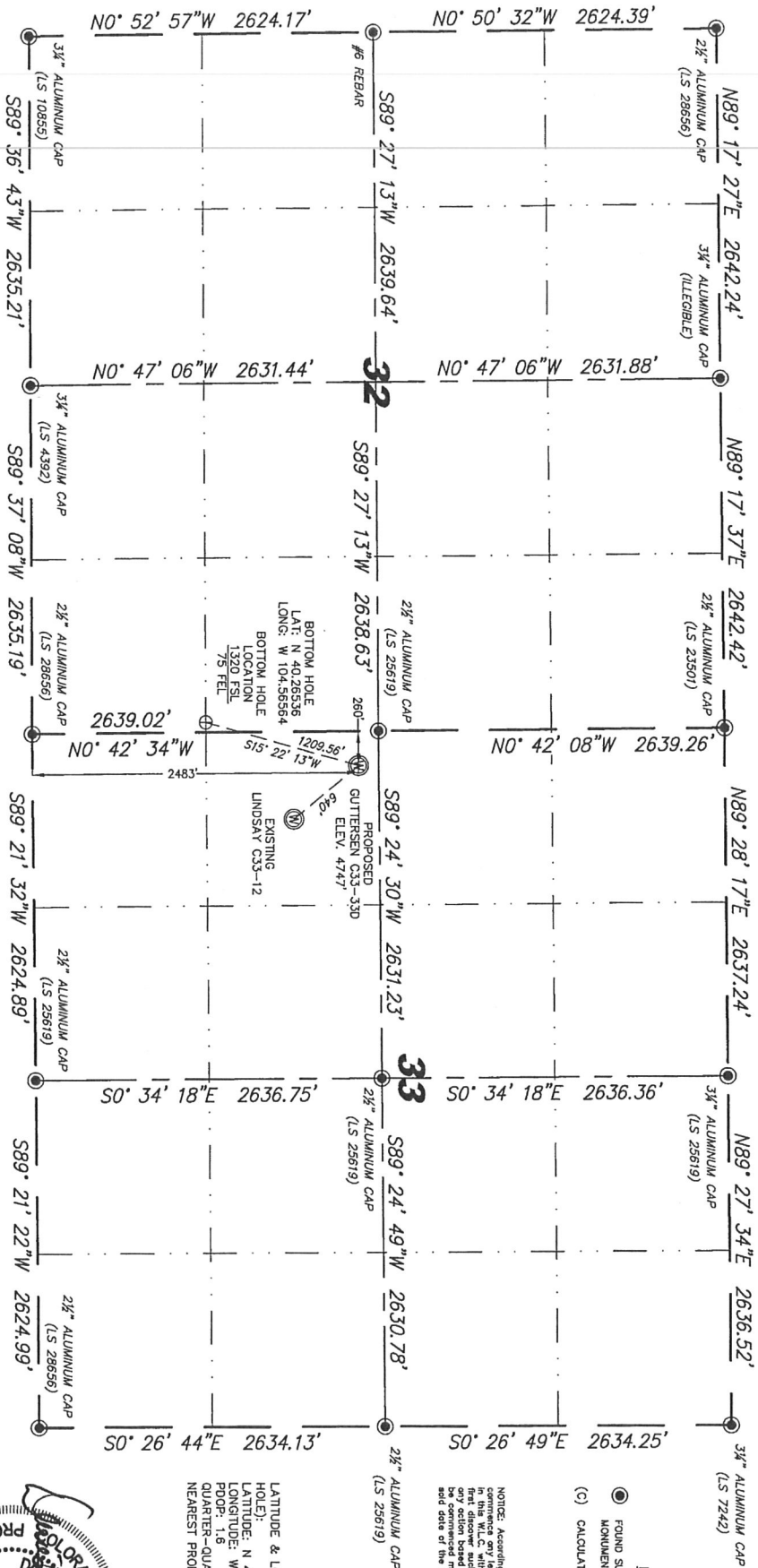
Stell Surveying Services, LLC

1102 West 19th Street P.O. BOX 2073

Cheyenne, Wyoming 82001

WELL LOCATION CERTIFICATE
THIS MAP DOES NOT REPRESENT A BOUNDARY SURVEY

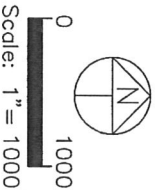
SECTION 32 & 33
TOWNSHIP 4 NORTH
RANGE 64 WEST



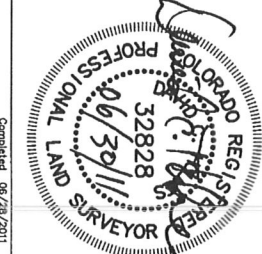
IN ACCORDANCE WITH A REQUEST FROM BRUN PARGES - NOBLE ENERGY INC. STEEL SURVEYING SERVICES, LLC HAS DETERMINED THE LOCATION OF THE GUTTERSEN C33-330 WELL TO BE 2483' FSL, 260' FSL, AS MEASURED AT NINETY (90) DEGREES FROM THE SECTION LINES, SECTION 33, TOWNSHIP 4 NORTH, RANGE 64 WEST, 6TH PRINCIPLE MERIDIAN, WELD COUNTY, COLORADO.

I HEREBY CERTIFY THAT THIS WELL LOCATION CERTIFICATE WAS PREPARED BY ME, OR UNDER MY DIRECT SUPERVISION, THAT THE FIELD WORK WAS COMPLETED ON 06/22/2011, FOR AND ON BEHALF OF NOBLE ENERGY INC. THAT IT IS NOT A LAND SURVEY PLAT OR AN IMPROVEMENT BUILDING OR OTHER FUTURE IMPROVEMENT LINES.

- NOTES:
- 1) BASE OF BEARING FOR THIS MAP ARE BASED UPON GPS OBSERVATIONS MADE ON 11/18/2010 BETWEEN MONUMENTS LOCATED AT THE SECTION CORNER AND THE NORTHEAST SECTION CORNER OF SAID SECTION AND WITH ALL BEARINGS SHOWN HEREON RELATIVE THERE TO.
 - 2) COORDINATES ARE BASED UPON NAD 83 DATUM.
 - 3) ELEVATIONS ARE BASED UPON NGS SPOT ELEVATION AND 88 DATUM.
 - 4) THE SURVEYING LIMIT IS 156' NORTH.
 - 5) SEE LOCATION DRAWING FOR ALL IMPROVEMENTS WITHIN VISIBLE IMPROVEMENTS LIMIT.
 - 6) THE LOCATION FALLS IN PASTURE LAND.



David C. Holmes
Professional Land Surveyor Registration No. 32828
State of Colorado
JOB #11086



NOTICE: According to Colorado law you MUST compare and contrast the well location with any defect in this W.L.C. within three years after you first discover such defect. In no event, may the well location be used to establish title to land be commenced more than ten years from this said date of the certification shown hereon.

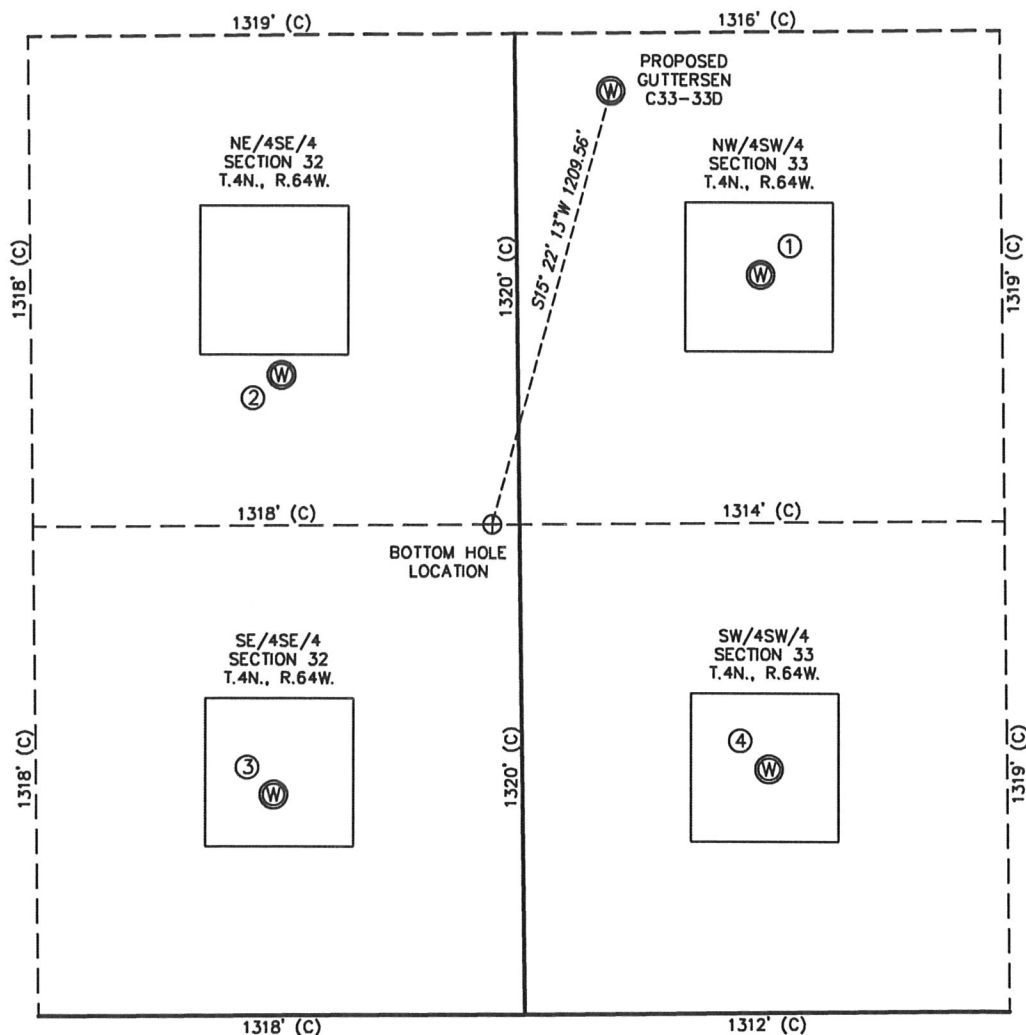
LEGEND

- FOUND SURVEY MONUMENT PER MONUMENT RECORD - EXCEPTIONS NOTED.
- (c) CALCULATED DIMENSION

LATITUDE & LONGITUDE (NAD 83 SURF/CE HOLE):
LATITUDE: N 40.26536
LONGITUDE: W 104.56445
POOP: 1.6
QUARTER-QUARTER: NW/4SW/4 SEC 33
NEAREST PROPERTY LINE: 156' NORTH

SITE SKETCH - GUTTERSEN C33-33D

SECTION 33
TOWNSHIP 4 NORTH
RANGE 64 WEST



①	②	③	④
LINDSAY C33-12 NW/SW SEC. 33 1985' FSL 662' FWL EL 4739' N 40.26719 W 104.56300 PDOP 3.2	PTF C32-9 NE/SE SEC. 32 1724' FSL 641' FEL EL 4759' N 40.26648 W 104.56767 PDOP 1.8	PTF C32-16 SE/SE SEC. 32 594' FSL 675' FEL EL 4766' N 40.26338 W 104.56778 PDOP 2.5	LINDSAY C33-13 SW/SW SEC. 33 655' FSL 670' FWL EL 4735' N 40.26354 W 104.56297 PDOP 2.4

NOTES:

- THIS SKETCH DOES NOT REPRESENT A BOUNDARY SURVEY.
- THE DATUM FOR THE LATITUDES AND LONGITUDES ON THIS SKETCH IS NAD83.

