

# Noble Energy

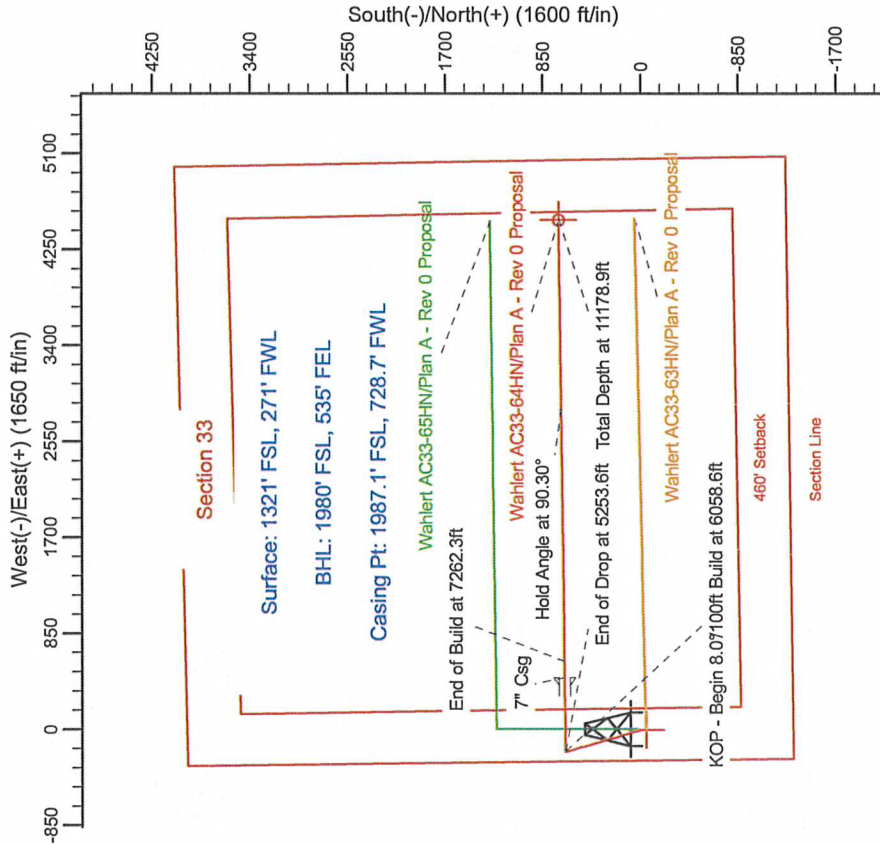
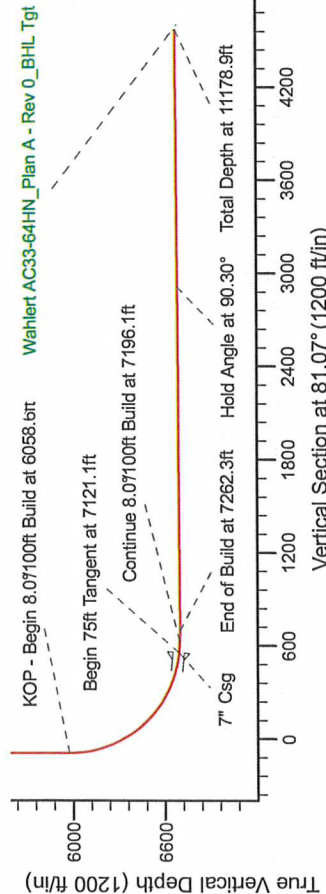
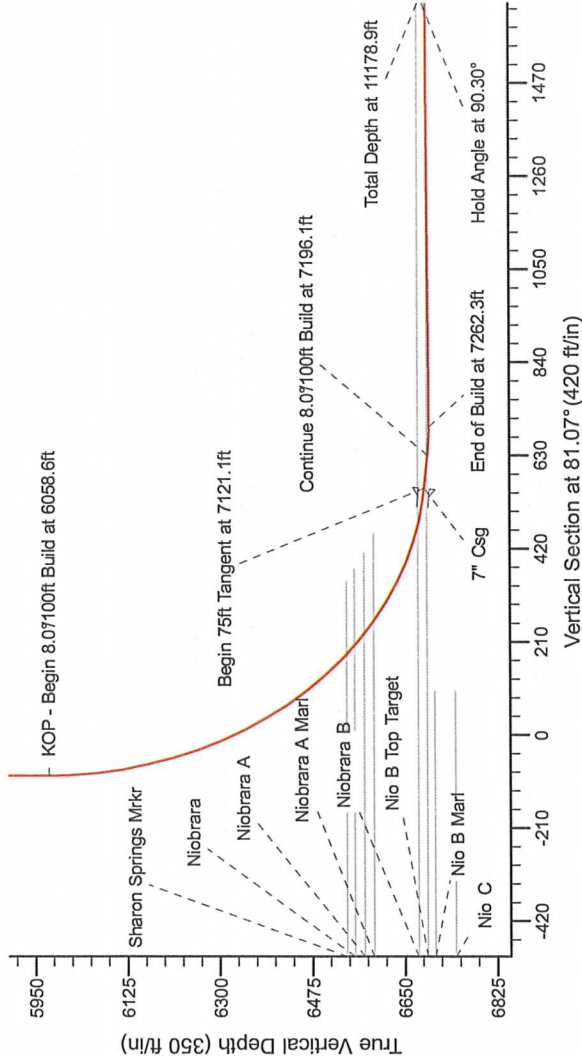
HALLIBURTON

Sperry Drilling

Project: Weld County Colorado (NAD 83)  
Site: Sec.33, T7N, R63W  
Well: Wahler AC33-64HN  
Wellbore: Plan A - Rev 0 (PERMITTING PLAN ONLY)  
Design: Plan A - Rev 0 Proposal

SECTION DETAILS

Sec	MD	Inc	Azi	TVD	+N/-S	+E/-W	Dleg	TFace	VSec	Target
1	0.0	0.00	0.00	0.0	0.0	0.0	0.00	0.00	0.0	
2	2000.0	0.00	0.00	2000.0	0.0	0.0	0.00	0.00	0.0	
3	2599.8	15.00	343.44	2599.0	74.8	-22.2	2.50	343.44	-10.4	
4	4653.8	15.00	343.44	4577.0	584.2	-173.8	0.00	0.00	-80.9	
5	5253.6	0.00	0.00	5170.0	659.0	-196.0	2.50	180.00	-91.3	
6	6058.6	0.00	0.00	5975.0	659.0	-196.0	0.00	0.00	-91.3	
7	7121.1	85.00	89.38	6688.5	666.1	457.7	8.00	89.38	555.6	
8	7196.1	85.00	89.38	6695.0	666.9	532.4	0.00	0.00	629.5	
9	7262.3	90.30	89.38	6697.7	667.6	598.6	8.00	0.00	695.0	
10	11178.9	90.30	89.39	6677.1	709.7	4514.8	0.00	65.70	4570.3	Wahler AC33-64HN_Plan A - Rev 0_BHL Tgt-



WELL DETAILS: Wahler AC33-64HN(NAD83 Geodetic System)

Ground Level: 4742.0  
Northing: 437821.47  
Easting: 1003346.71  
Latitude: 40° 31' 35.888 N  
Longitude: 104° 27' 0.900 W

Plan: Plan A - Rev 0 Proposal (Wahler AC33-64HN/Plan A - Rev 0 (PERMITTING PLAN ONLY))

Created By: Erasmo Mendoza Date: 15:19, August 09 2011

Magnetic Model GRS200510  
Destination: 7.00°  
Dip Angle: 67.21°  
Field Strength: 53207.4



Grid North is 5.98° East of True North (Grid Conversion)  
Magnetic North is 7.00° East of True North (Magnetic Conversion)  
To convert a True Orientation to a Grid Orientation, add 5.98°  
To convert a Magnetic Orientation to a Grid Orientation, add 7.00°