

Downhole Schematic for Federal 25-1BB (PH25)



Project : South Piceance

API # : 05045191270000

Surface Location : SENE Sec 25 T7S - R95W 6th PM

Area : Parachute

County : GARFIELD

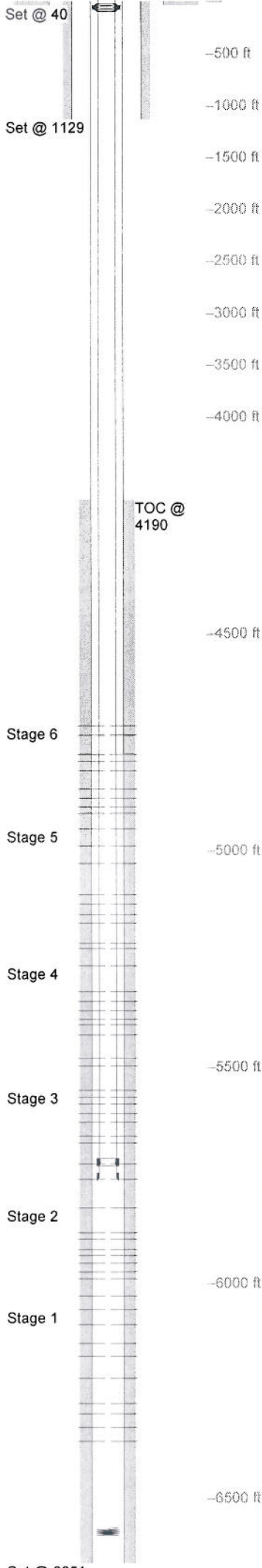
BHL : SENE-25-7S-95 W 6th PM

As Of : 06/13/2011

GL : 6064.0 ft

KB to GL : 22.0 ft

KB : 6086.0 ft



Casing Details Section	Hole	Casing	Mass	Set At	Length	Thread	Grade	Description
Conductor	26.000	16	42	40	40		A52A	Joint
Surface	12.250	9.625	0	1,129	1			Cement Shoe
		9.625	36	1,128	44	LT&C	J55	Shoe Track
		9.625	36	1,083	1,055	LT&C	J55	Casing
		9.625	36	28	5	ST&C		Casing Head
		9.625	36	23	27	LT&C	J55	Landing Jt.
Production	7.875	4.5	0	6,651	1	LT&C		Float Shoe
		4.5	11.6	6,650	41	LT&C	E-80	Casing
		4.5	0	6,609	1	LT&C		Float Collar
		4.5	11.6	6,607	948	LT&C	E-80	Casing
		4.5	11.6	5,659	23	LT&C	E-80	Marker Jt.
		4.5	11.6	5,637	987	LT&C	E-80	Casing
		4.5	11.6	4,650	23	LT&C	E-80	Marker Jt.
		4.5	11.6	4,627	4,600	LT&C	E-80	Casing
		4.5	11.6	27	6	LT&C	E-80	Mandel w/pup jt.
		4.5	11.6	21	28	LT&C	P-110	Landing jt.

Cement Details Section	Sequence	Top	Density	Blend / Additives
Surface	Lead	0	8.3	20 bbls. water spacer /
	Tail	0	12.5	12.5 #/gal. -Class G / G+2%D79+0.2%D46+0.25 pps D29
Production	Lead	857	15.8	15.8 #/gal - Class G / D907+1.25%SOO1+0.2%D046+0.25ppsD29
	Tail	0	0.0	2 bbls. Pre-Flush /
		0	0.0	40 bbls. Spacer /
	Lead	4,190	12.0	TXI / D49 + .5% D046 + .8% D013 + 1% D079 + .25 D029 lb/sk D029
	Tail	5,477	13.0	TXI / D049 + 3% D020 + .2% D112 + .4% D013 + .25 lbs/sk D029 + .5% D046
Conductor	Fill	0	0.0	4 yards redi mix /

Tubing and Downhole Equipment	O.D.	Length	Depth	Description
	0.000	20.00	20.00	KBTH -2.00
	3.990	0.83	20.83	4 1/6 5K Wood Group
	2.594	0.68	21.51	2 3/8 N80 saver sub
	2.375	5,687.51	5,709.02	173 jts 2 3/8 J55 4.7# Eue Tbg
	3.063	0.98	5,710.00	1.81 F-Nipple
	2.375	32.87	5,742.87	1 jt 2 3/8 J55 4.7# Eue Tbg
	3.063	0.92	5,743.79	Top 1/2 pump off bit sub
	3.250	1.21	6,568.00	btm 1/2 POBS & 3 3/4" Mill

Perforations	Stage	Date	From	To	Shots	Stage	Date	From	To	Shots					
Stage 1	1	05/24/2011	6,366	6,367	3	Stage 4	05/27/2011	5,496	5,497	3					
			6,334	6,335	3			5,478	5,479	3					
			6,302	6,303	3			5,424	5,425	3					
			6,278	6,279	3			5,400	5,401	3					
			6,220	6,221	3			5,388	5,389	3					
			6,168	6,169	3			5,368	5,369	3					
			6,138	6,139	3			5,346	5,347	3					
			6,094	6,095	3			5,324	5,325	3					
			6,060	6,061	3			5,264	5,265	3					
			Stage 2	2	05/25/2011			6,028	6,029	3	Stage 5	05/31/2011	5,224	5,225	3
								5,988	5,989	3			5,212	5,213	3
								5,972	5,973	3			5,166	5,167	3
5,952	5,953	3				5,146	5,147	3							
5,934	5,935	3				5,122	5,123	3							
5,920	5,921	3				5,100	5,101	3							
5,896	5,897	3				5,028	5,029	3							
5,882	5,883	3				4,988	4,989	3							
5,824	5,825	3				4,948	4,949	3							
Stage 3	3	05/26/2011				5,758	5,759	3	Stage 6	06/01/2011			4,912	4,913	3
						5,722	5,723	3					4,898	4,899	3
						5,674	5,675	3					4,878	4,879	3
			5,658	5,659	3	4,856	4,857	3							
			5,626	5,627	3	4,814	4,815	3							
			5,606	5,607	3	4,792	4,793	3							
			5,584	5,585	3	4,776	4,777	3							
			5,568	5,569	3	4,732	4,733	3							
			5,552	5,553	3	4,710	4,711	3							

Frac Summary
 Stage 1 : 6,060 - 6,367, 27 - 0.340" shots, 11144 bbls of Slickwater Report Date: 05/24/2011
 Stage 2 : 5,824 - 6,029, 27 - 0.340" shots, 9333 bbls of Slickwater Report Date: 05/25/2011
 Stage 3 : 5,552 - 5,759, 27 - 0.340" shots, 8095 bbls of Slickwater Report Date: 05/26/2011
 Stage 4 : 5,264 - 5,497, 27 - 0.340" shots, 7238 bbls of Slickwater Report Date: 05/27/2011
 Stage 5 : 4,948 - 5,225, 27 - 0.340" shots, 10000 bbls of Slickwater Report Date: 05/31/2011
 Stage 6 : 4,710 - 4,913, 27 - 0.340" shots, 9143 bbls of Slickwater Report Date: 06/02/2011

Comments
 06/13/2011 SIBHP 30