

T10N, R59W, 6th P.M.

WHITING OIL & GAS CORP.

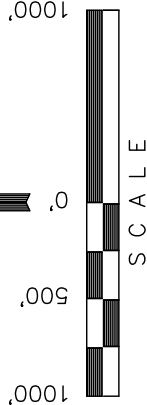
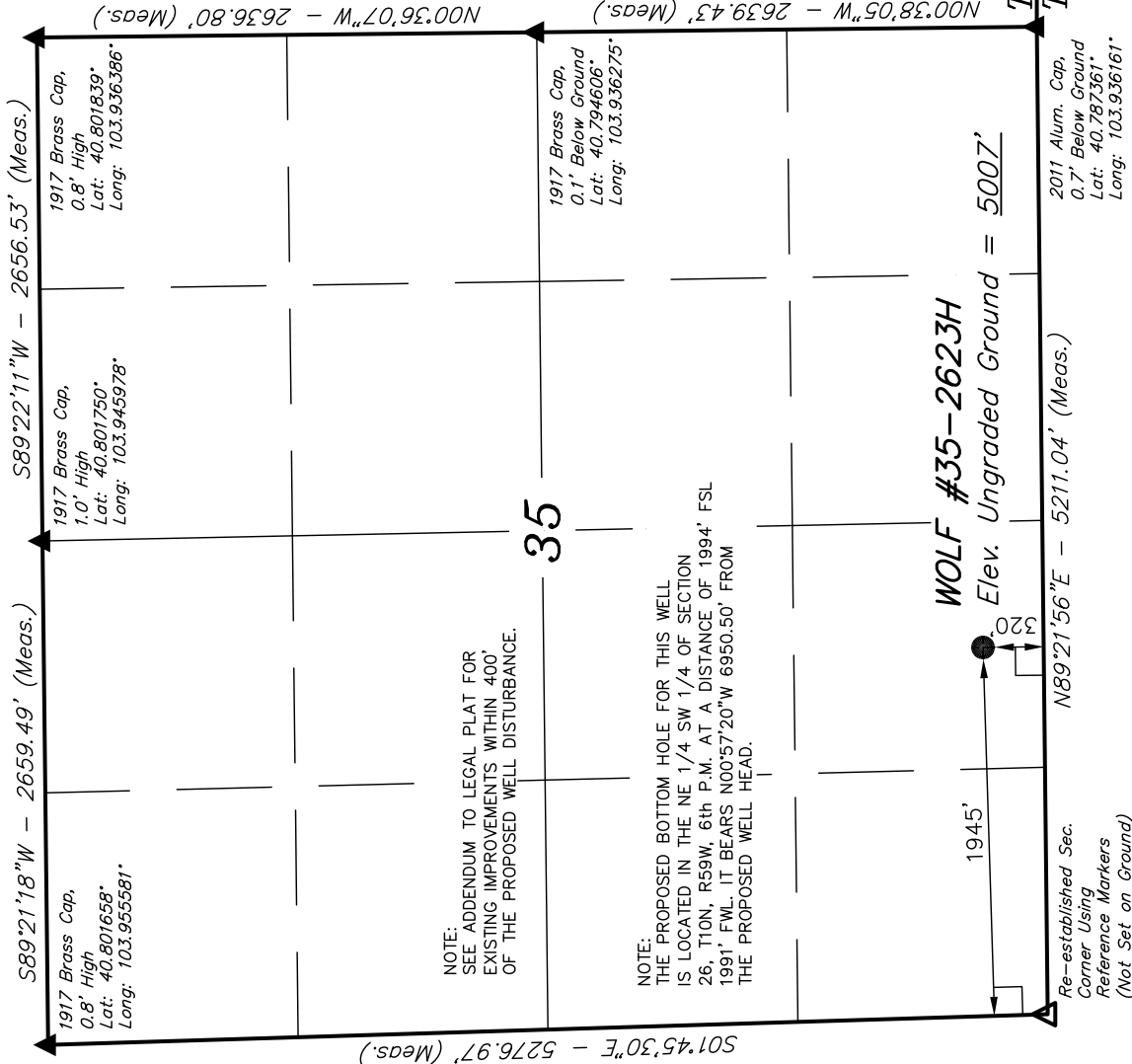
Well location, WOLF #35-2623H (SURFACE LOCATION), located as shown in the SE 1/4 SW 1/4 of Section 35, T10N, R59W, 6th P.M., Weld County, Colorado.

BASIS OF ELEVATION

SPOT ELEVATION LOCATED AT THE NORTHEAST CORNER OF SECTION 15, T9N, R58W, 6th P.M. TAKEN FROM THE GATEHOOK SPRING, QUADRANGLE, COLORADO, WELD COUNTY, 7.5 MINUTE QUAD (TOPOGRAPHIC MAP) PUBLISHED BY THE UNITED STATES DEPARTMENT OF THE INTERIOR, GEOLOGICAL SURVEY. SAID ELEVATION IS MARKED AS BEING 4679 FEET.

BASIS OF BEARINGS

BASIS OF BEARINGS IS A G.P.S. OBSERVATION.



CERTIFICATE

THIS IS TO CERTIFY THAT THE ABOVE PLAT WAS PREPARED FROM FIELD NOTES OF ACTUAL SURVEYS MADE BY ME OR UNDER MY SUPERVISION AND THAT THE SAME ARE TRUE AND CORRECT TO THE BEST OF MY KNOWLEDGE AND BELIEF.

Robert J. Papp
REGISTERED LAND SURVEYOR
REGISTRATION NO. 17492
STATE OF COLORADO
08-19-11

UINTAH ENGINEERING & LAND SURVEYING
85 SOUTH 200 EAST - VERNAL, UTAH 84078
(435) 789-1017

SCALE 1" = 1000'	DATE SURVEYED: 07-25-11	DATE DRAWN: 07-29-11
PARTY J.H. C.Z. T.B.	REFERENCES G.L.O. PLAT	
WEATHER WARM	FILE	
		WHITING OIL & GAS CORP.

LEGEND:

- 90° SYMBOL
- PROPOSED WELL HEAD.
- SECTION CORNERS LOCATED.
- SECTION CORNERS RE-ESTABLISHED. (Not Set on Ground.)

NAD 83 (SURFACE LOCATION)
LATITUDE = 40°47'17.27" (40.788131)
LONGITUDE = 103°56'52.75" (103.947986)
NAD 27 (SURFACE LOCATION)
LATITUDE = 40°47'17.32" (40.788144)
LONGITUDE = 103°56'50.94" (103.947483)

PDOP = 1.7