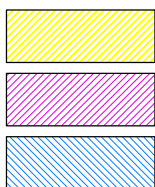
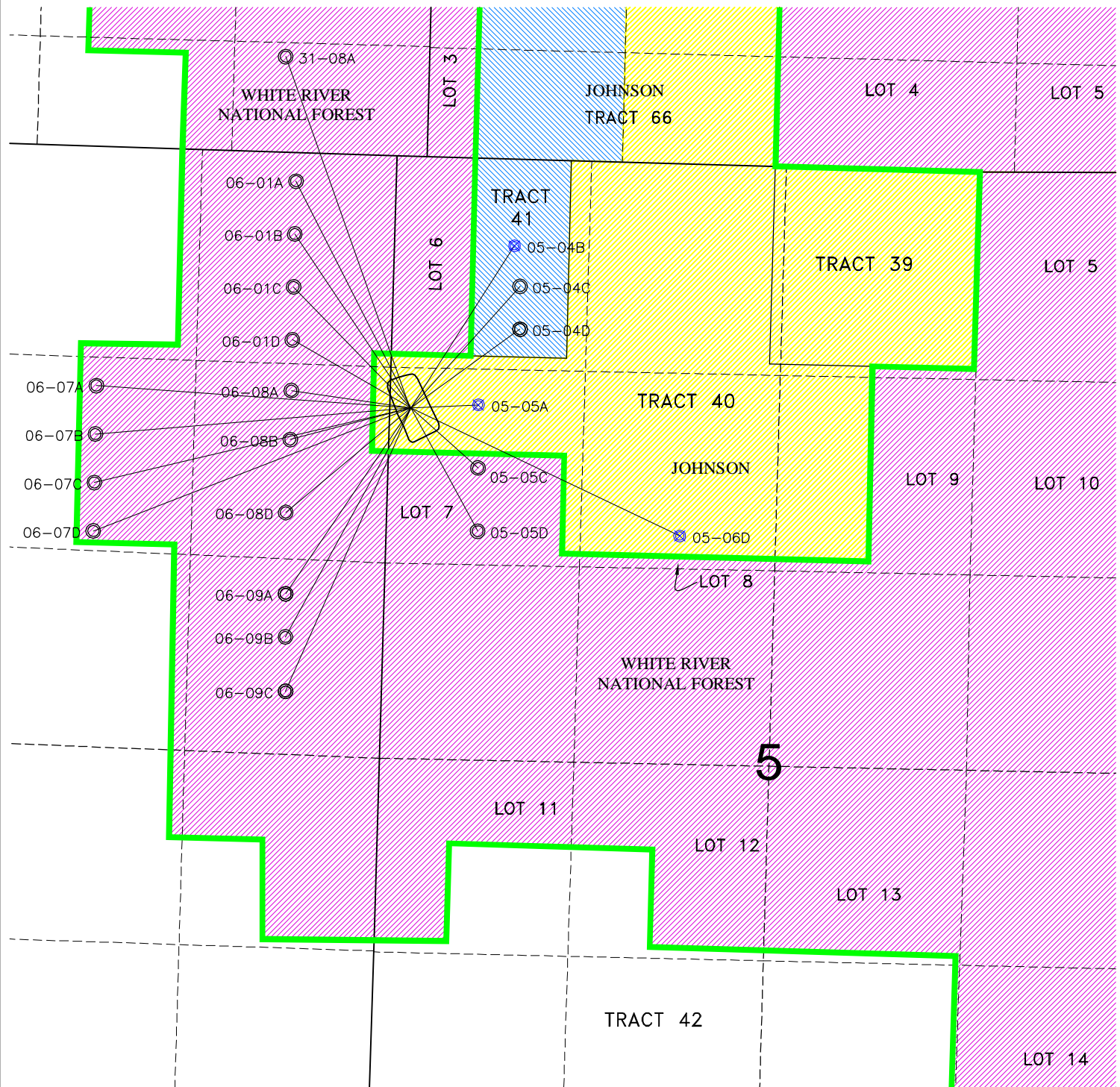


## MULTI-WELL PLAN



PRIVATE MINERALS

FEDERAL MINERALS

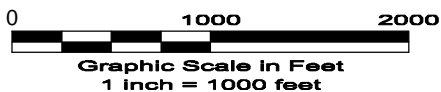
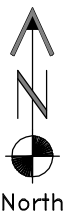
PRIVATE SURFACE  
FEDERAL MINERALS

— PROPERTY LINE

⊙ PROPOSED BOTTOM HOLE LOCATION

⊗ EXISTING BOTTOM HOLE

9/30/09



LAND SURVEYING AND MAPPING  
LAFAYETTE - WINTER PARK  
Ph 303 666 0379 Fx 303 665 6320

**LARAMIE ENERGY II LLC**  
**JOHNSON 05-05 PAD**

**TRACT 40 SECTION 5 T8S R93W 6th PM**  
**GARFIELD COUNTY COLORADO**