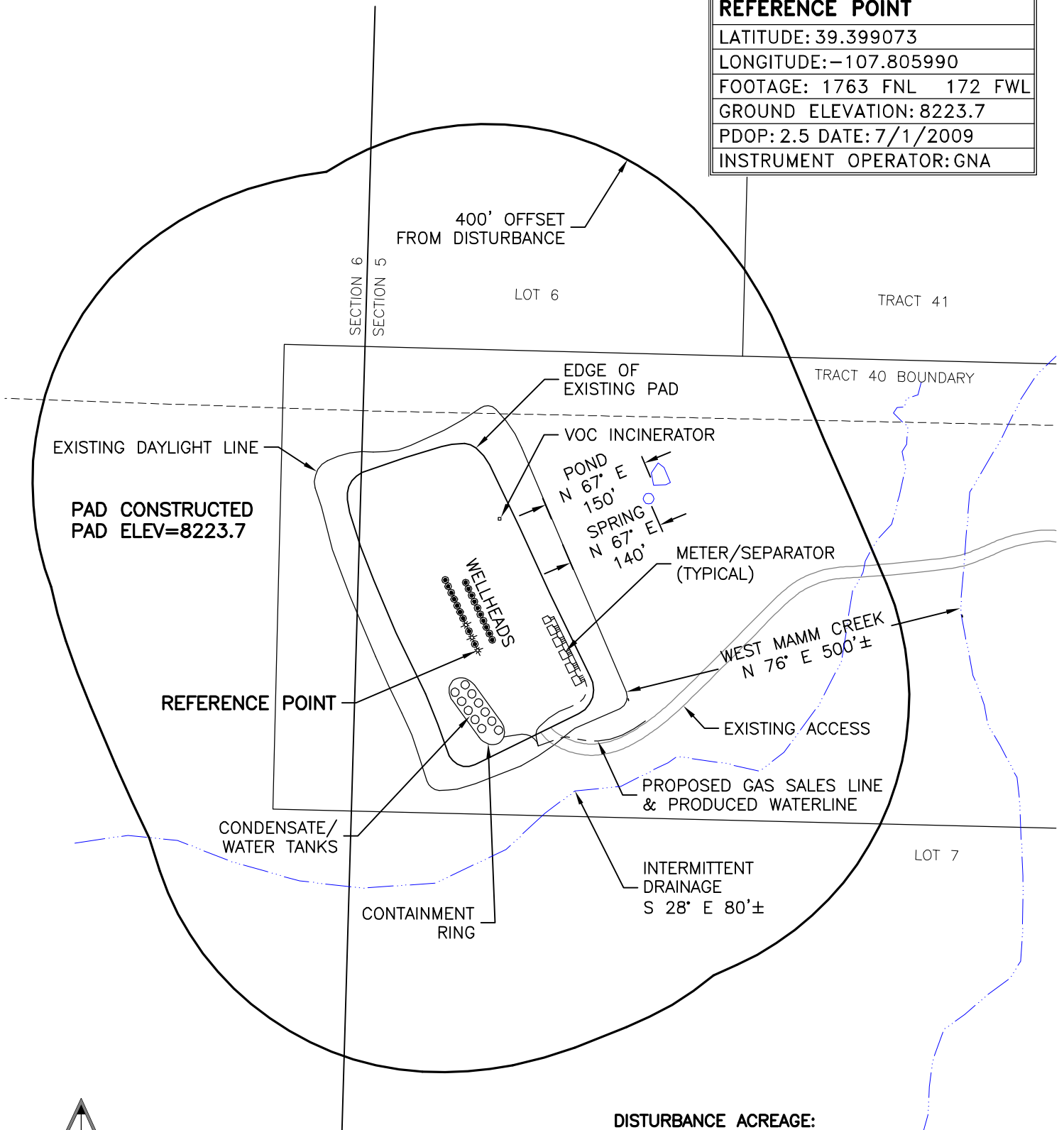


LOCATION DRAWING

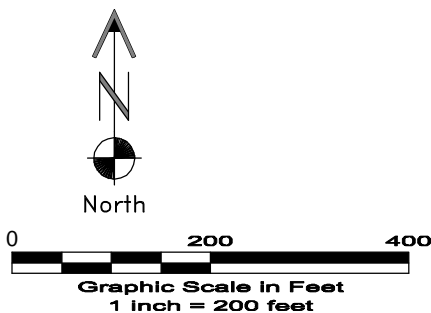
REFERENCE POINT

LATITUDE: 39.399073
LONGITUDE: -107.805990
FOOTAGE: 1763 FNL 172 FWL
GROUND ELEVATION: 8223.7
PDOP: 2.5 DATE: 7/1/2009
INSTRUMENT OPERATOR: GNA



DISTURBANCE ACREAGE:
 4.7± DRILLING OPERATIONS
 1.2± INTERIM RECLAIM

8/24/11



GEO SURV

LAND SURVEYING AND MAPPING
 LAFAYETTE - WINTER PARK
 Ph 303 666 0379 Fx 303 665 6320

LARAMIE ENERGY II LLC
JOHNSON 05-05 PAD

TRACT 40 SEC. 5 T8S R93W 6th PM
GARFIELD COUNTY COLORADO