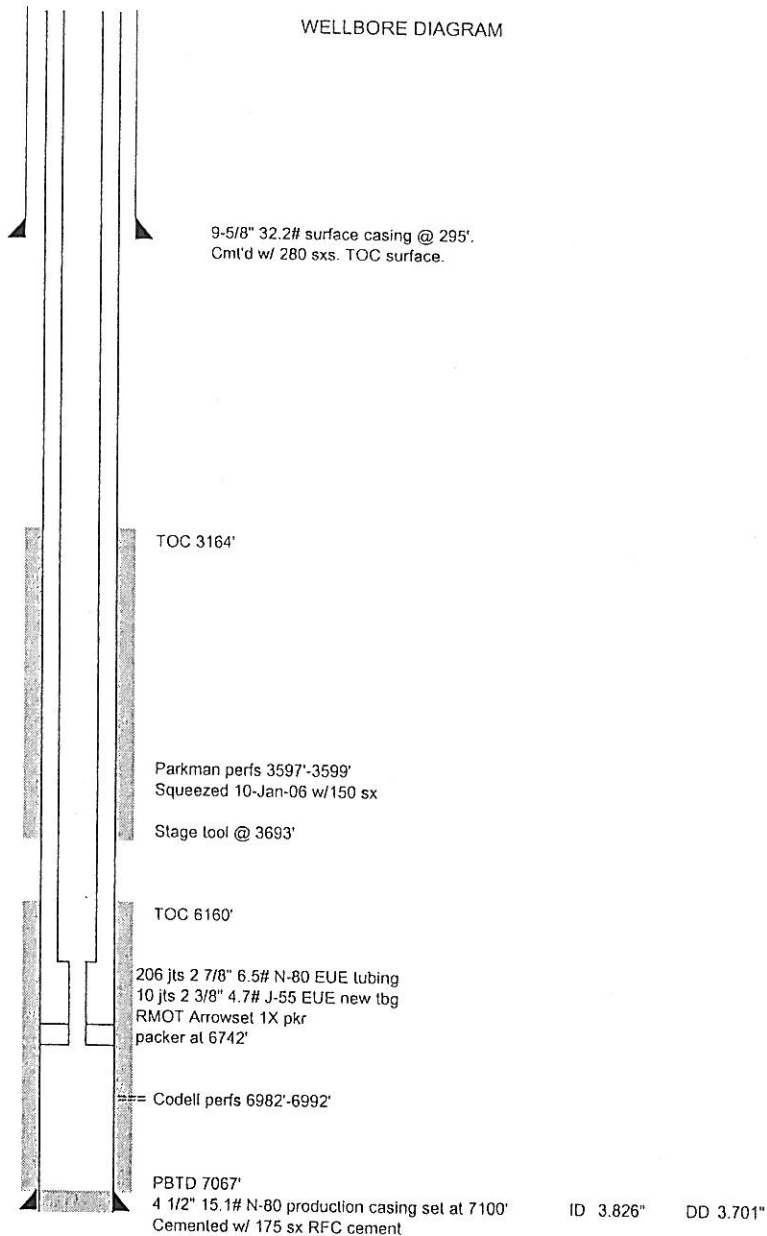


CONQUEST OIL COMPANY

WELLBORE DIAGRAM



WELL INFORMATION	
WELL NAME	OLE 4-24
DATE	12-Feb-06
API #	05-123-132239
STATUS	Flowing Codell Oil Well (frac string & packer still in hole)
SURFACE LOCATION	T6N-R65W SECTION 24 660' FNL 660' FWL
BOTTOM-HOLE LOCATION	SAME
COUNTY, STATE	WELD COUNTY, COLORADO
GROUND ELEVATION	4694'
KB-GR MEASUREMENT	9'
COMMENTS	WELL WAS DRILLED TO CODELL, COMPLETED IN PARKMAN SQUEEZED PARKMAN, RECOMPLETED TO CODELL
	Highway 392 & Road 47, east 1/4, south 1/8, west into