



HIGH RESOLUTION INDUCTION

Company: Noble Energy Inc.
Well: Calson K23-22D
Field: Wattenberg

County: Weld
State/Province: Colorado

Location: SHL 2342 FSL & 2537 FUL NE SW
BH: 2806 FNL & 1471 FEL SW NE
Sec 23 Twp 4N Rge 68W

Log Measured From: ICB
Date: April 12, 2011
Depth (m): 7600
Depth (ft): 7957

Bottom Logged (m): 7600
Bottom Logged (ft): 7957

Casing Driver: 609
Casing Depth: 7600

Tool Bit (ft) Hole: 609
Casing Depth: 7600

Drill Bit Velocity: 0.51
Drill Bit Rate: 130
Run @ Mass Temp: 2.41 @ 72°F
Run @ Mass Temp: 2.41 @ 72°F
Run @ Mass Temp: 2.41 @ 72°F

Time Correlation Started: 0045
Maximum Recorded Temperature: 215°F
Equipment Number: 215 F
Recorded By: Jodi Chavichew

Equipment Number: 215 F
Recorded By: Jodi Chavichew

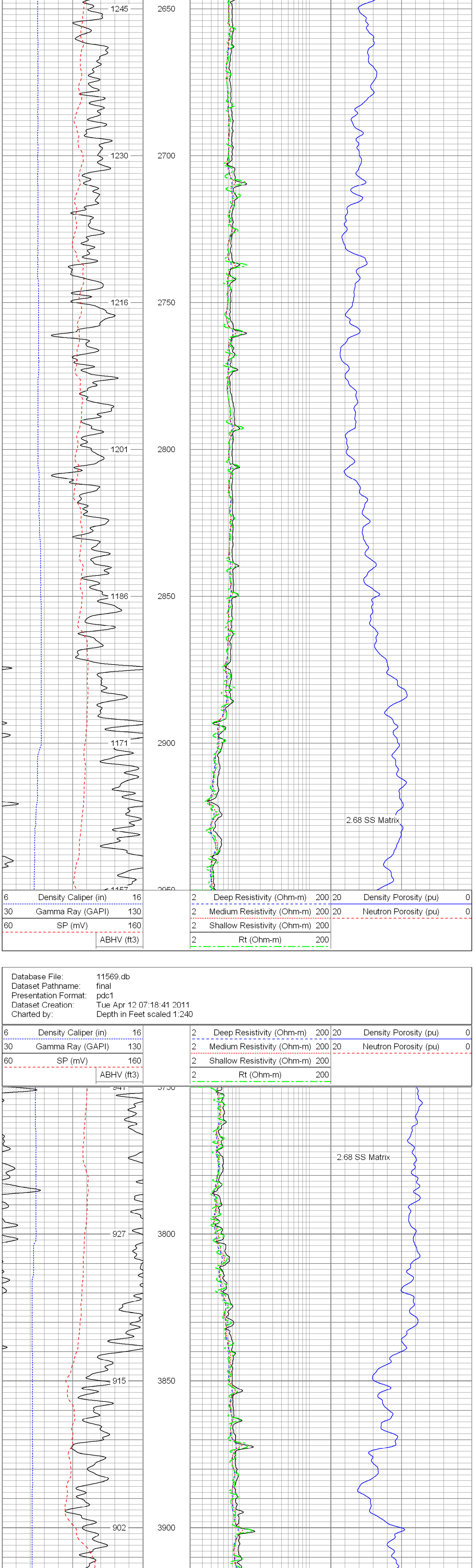
All interpretations are opinions based on inferences from electrical or other measurements and we cannot and do not guarantee the accuracy or correctness of any interpretation, and we shall not, except in the case of gross or willful negligence on our part, be liable or responsible for any loss, costs, damages, or expenses incurred or sustained by anyone resulting from any interpretation made by any of our officers, agents or employees. These interpretations are also subject to our general terms and conditions set out in our current Price Schedule.

Comments

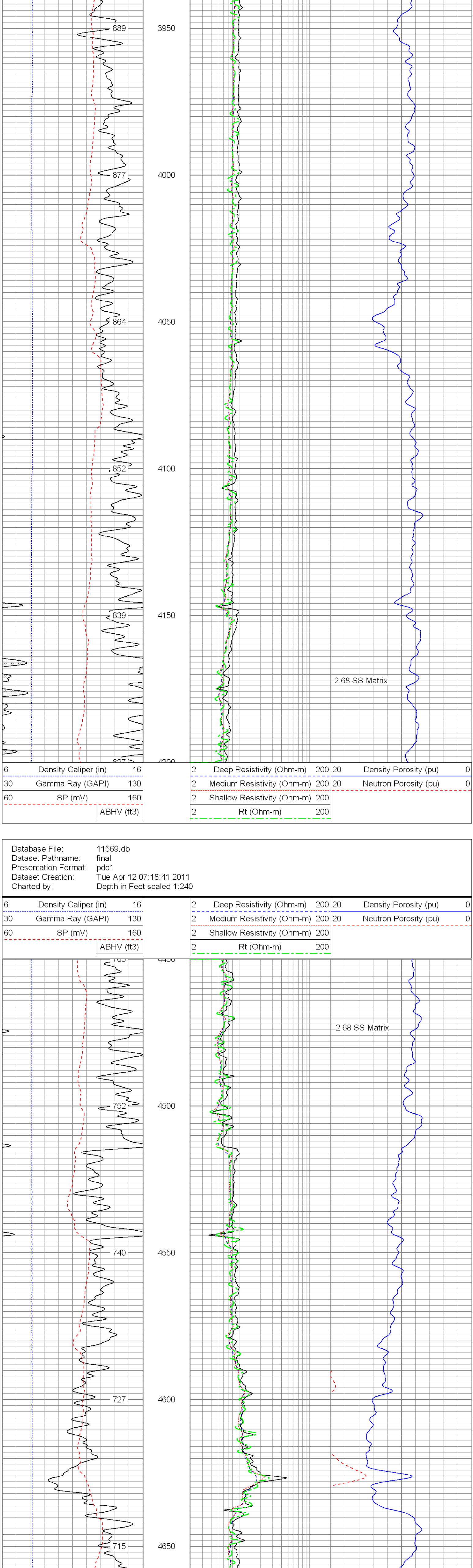
Annular volume calculated for 4.5" casing
Ensign Rig 126
Thank you for using Phoenix Surveys!!
API #. 05-123-31671-00

No repeat due to hole conditions.

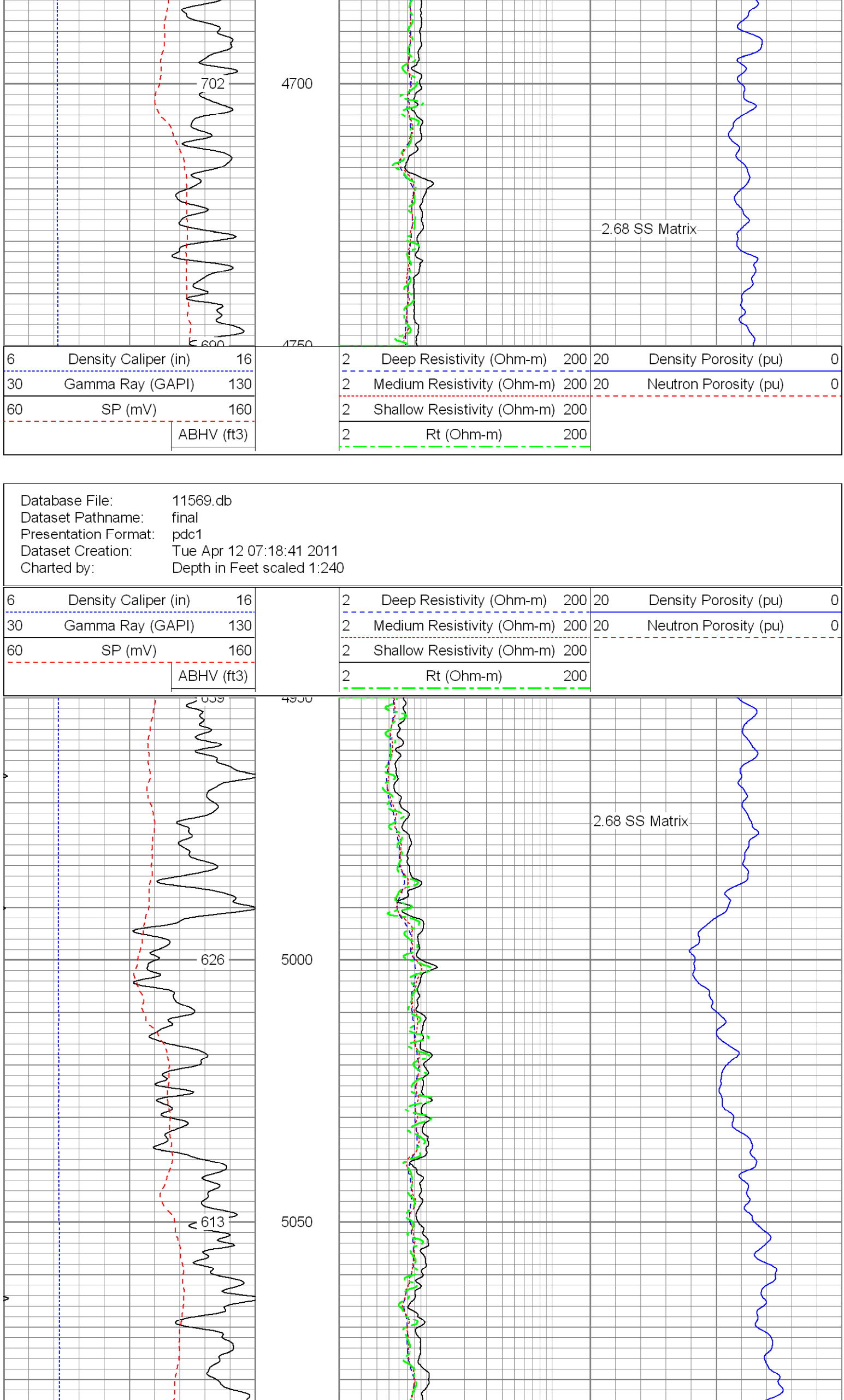
Database File: 11569.db
Dataset Pathname: final
Presentation Format: pdc1
Dataset Creation: Tue Apr 12 07:18:41 2011
Charted by: Depth in Feet scaled 1:240



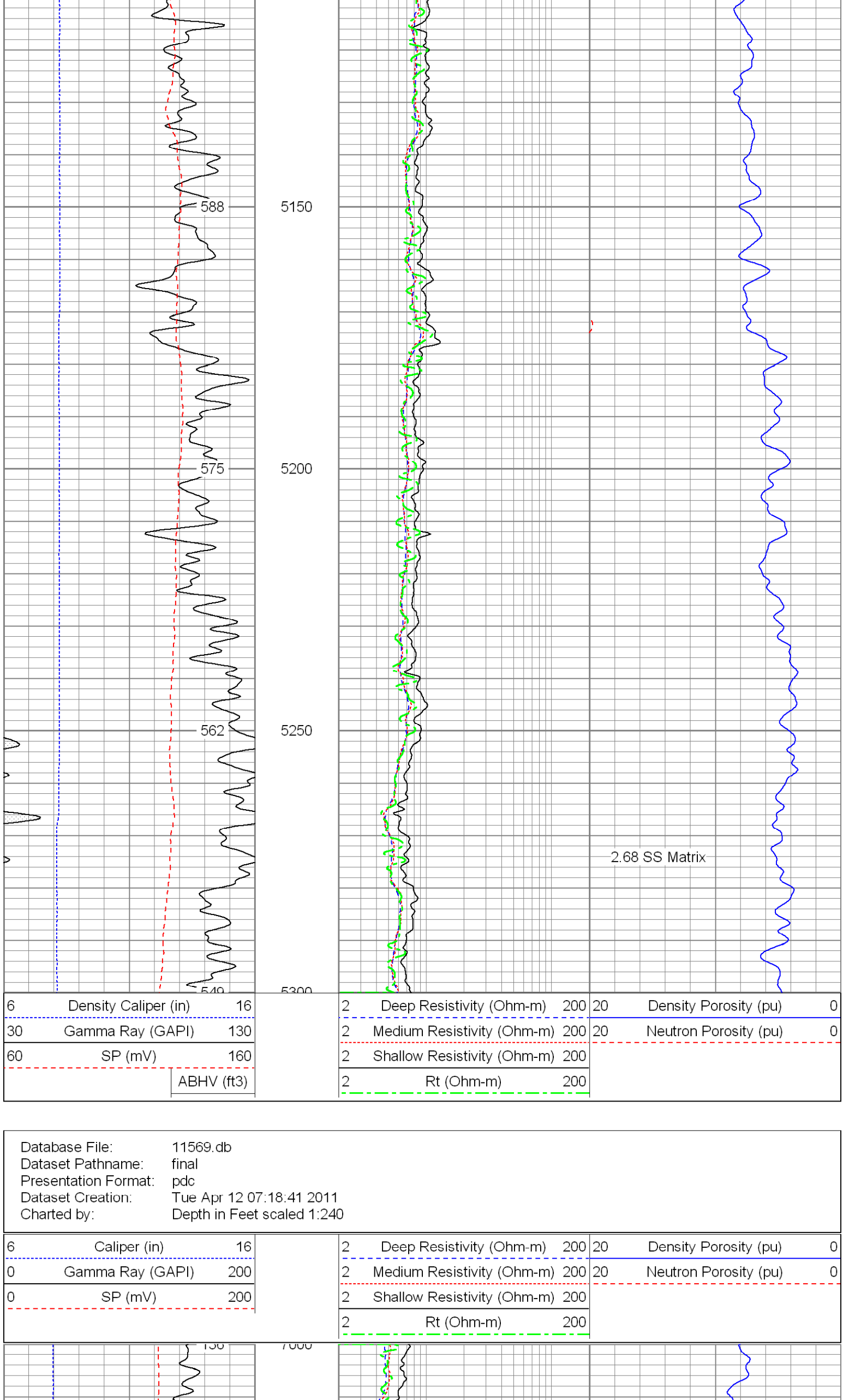
Database File: 11569.db
Dataset Pathname: final
Presentation Format: pdc1
Dataset Creation: Tue Apr 12 07:18:41 2011
Charted by: Depth in Feet scaled 1:240



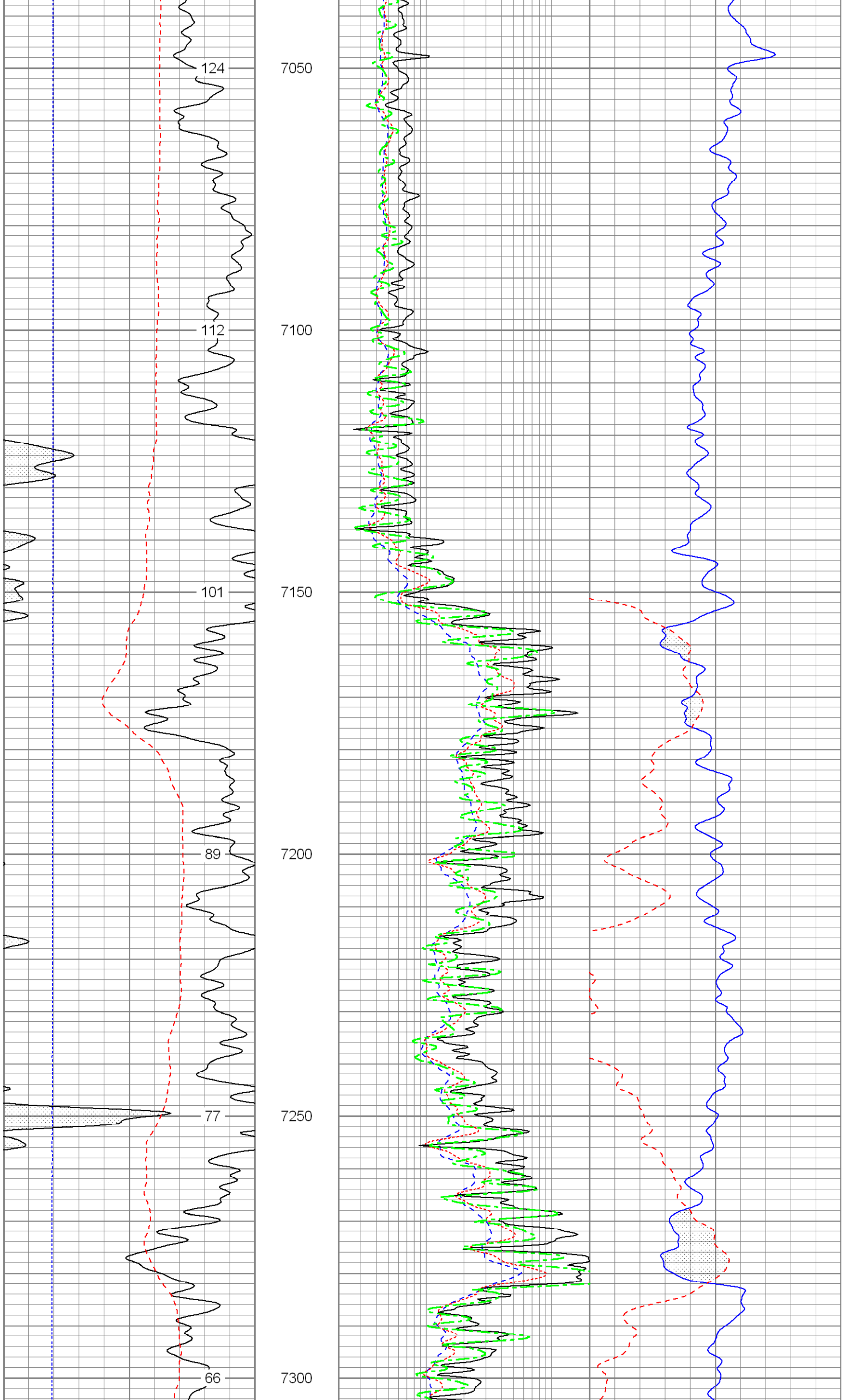
Database File: 11569.db
Dataset Pathname: final
Presentation Format: pdc1
Dataset Creation: Tue Apr 12 07:18:41 2011
Charted by: Depth in Feet scaled 1:240



Database File: 11569.db
Dataset Pathname: final
Presentation Format: pdc1
Dataset Creation: Tue Apr 12 07:18:41 2011
Charted by: Depth in Feet scaled 1:240



Database File: 11569.db
Dataset Pathname: final
Presentation Format: pdc1
Dataset Creation: Tue Apr 12 07:18:41 2011
Charted by: Depth in Feet scaled 1:240



Database File: 11569.db
Dataset Pathname: final
Presentation Format: pdc1
Dataset Creation: Tue Apr 12 07:18:41 2011
Charted by: Depth in Feet scaled 1:240

