



eog resources

600 Seventeenth Street

Suite 1000N

Denver, CO 80202

(303) 572-9000

Scale 1:240 (5"=100') Imperial
Measured Depth Log

Well Name: Critter Creek 30-26H

Location: Hereford Ranch Prospect

License Number: API# 05-123-32328, AFE# 311257

Region: DJ Basin

Spud Date: Prespud 09/20/10, Drill out 11/5/10

Drilling Completed: 11/19/2010

Surface Coordinates: SESE (501 ft. FSL & 777 ft. FEL, Section 26, T11N - R63W, Weld County, Colorado)

Bottom Hole Coordinates: SESE (600 ft. FSL & 1450 ft FEL), Section 36, T11N - R63W, Weld County, Colorado

Ground Elevation (ft): 5,161'

K.B. Elevation (ft): 5,184'

Logged Interval (ft): 1,274' To: TD

Total Depth (ft): 12,282'

Formation: Niobrara (Kn), Kn "B" Chalk

Type of Drilling Fluid: Polymer, Chem gel

Printed by WellSight Log Manager from WellSight Systems 1-800-447-1534 www.WellSight.com

OPERATOR

Company: EOG Resources Inc.

Address: 600 17th St., Ste. 1000
Denver, CO 80202

GEOLOGISTS

Name: John W. Husk

Robert Groth

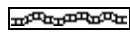
Company: Husk Inc.

G & H Production Co, LLC

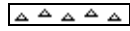
Address: 8229 E. Briarwood Ave.
Centennial, CO 80112-1306

518 17th Street, Suite 1060
Denver, Colorado 80202

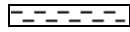
ROCK TYPES



Bent



Cht



Clyst



Coal



Congl



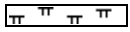
Dol



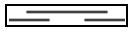
Gyp



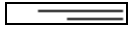
Ls



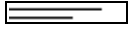
Mrlst



Sh



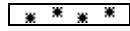
Shcol



Shgy



Ss



Cement



Sltst



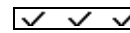
Ss



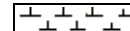
Chlk



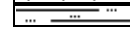
Fracture



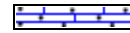
Anhyd



Mdstrn



Sltly sh



Carb chalk



Carb sh

ACCESSORIES

MINERAL

- Anhy
- Arggrn
- Arg
- Bent
- Bit
- Breclfrag
- Calc
- Carb
- Chtdk
- Chtlt
- Dol
- Feldspar
- Ferrpel
- Ferr
- Glau
- Gyp
- Hvymin
- Kaol
- Marl

- Minxl
- Nodule
- Phos
- Pyr
- Salt
- Sandy
- Silt
- Sil
- Sulphur
- Tuff

FOSSIL

- Algae
- Amph
- Belm
- Bioclst
- Brach
- Bryozoa
- Cephal
- Coral

- Crin
- Echin
- Fish
- Foram
- Fossil
- Gastro
- Oolite
- Ostra
- Pelec
- Pellet
- Pisolite
- Plant
- Strom

STRINGER

- Anhy
- Arg
- Bent
- Coal
- Dol

- Gyp
- Ls
- Mrst
- Sltstrg
- Ssstrg

TEXTURE

- Boundst
- Chalky
- Cryxln
- Earthy
- Finexln
- Grainst
- Lithogr
- Microxln
- Mudst
- Packst
- Wackest

OTHER SYMBOLS

POROSITY TYPE

- Earthy
- Fenest
- Fracture
- Inter
- Moldic
- Organic
- Pinpoint
- Vuggy

SORTING

- Well
- Moderate
- Poor

ROUNDING

- Rounded
- Subrnd
- Subang
- Angular

OIL SHOWS

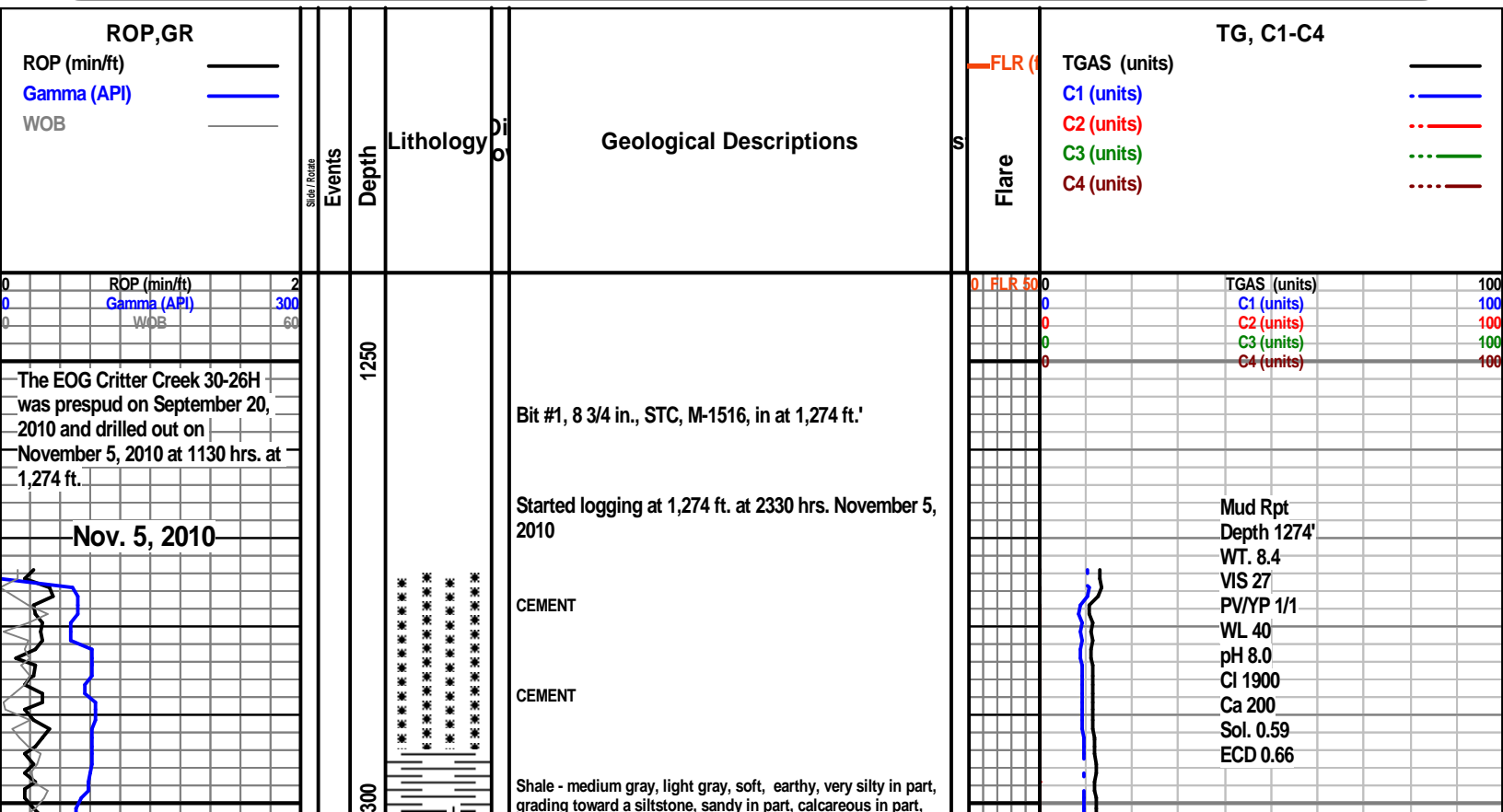
- Uniform
- Spotted
- Dead
- Patchy

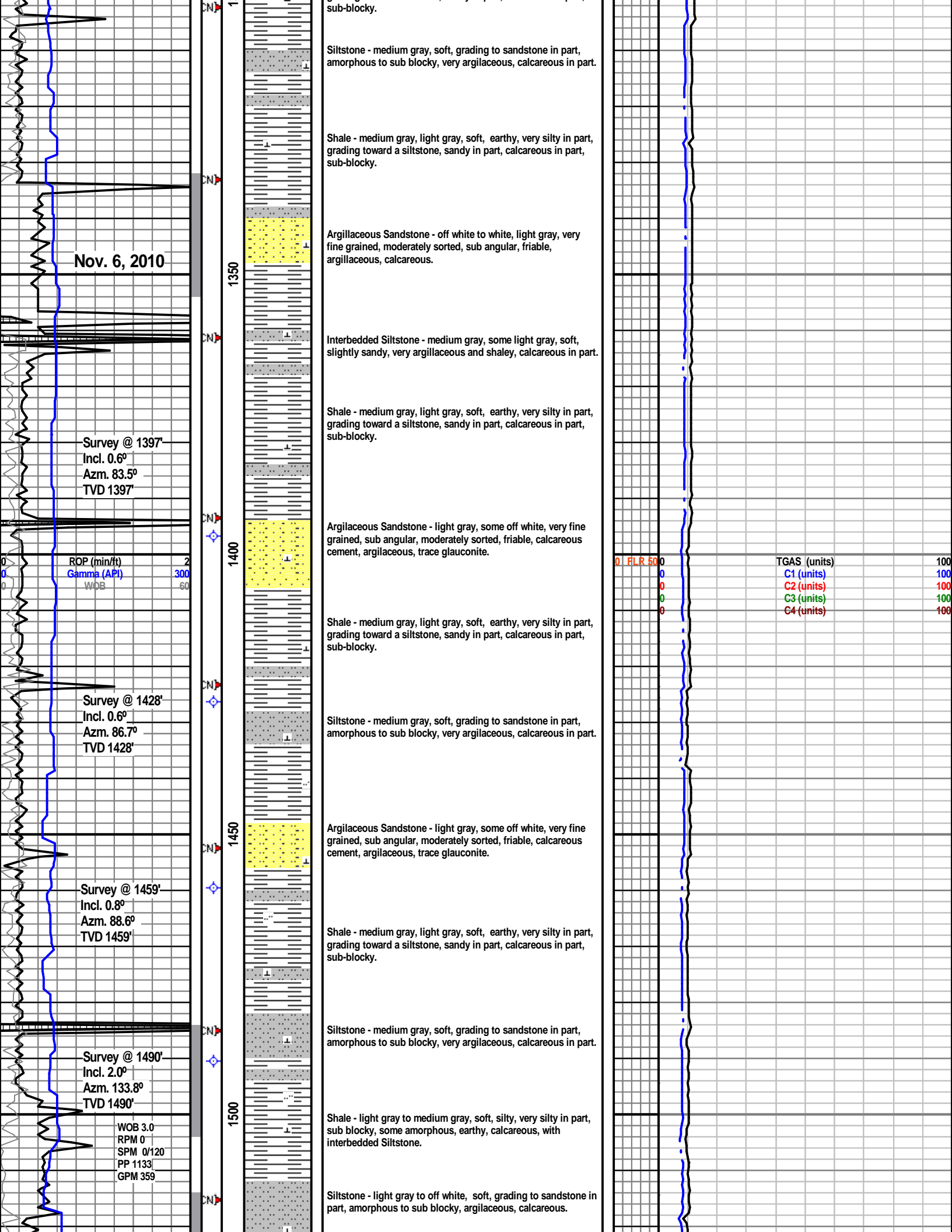
INTERVALS

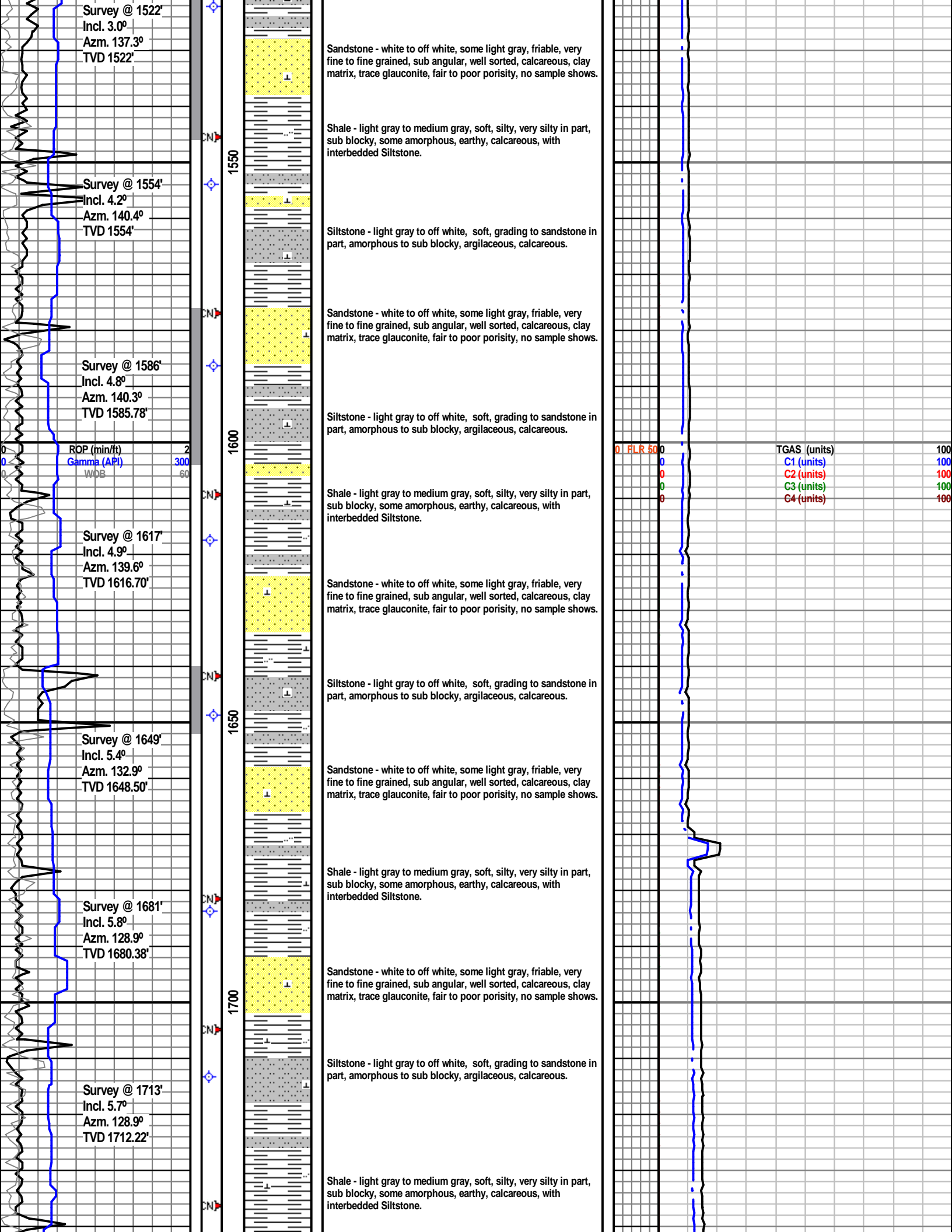
- Core
- Dst

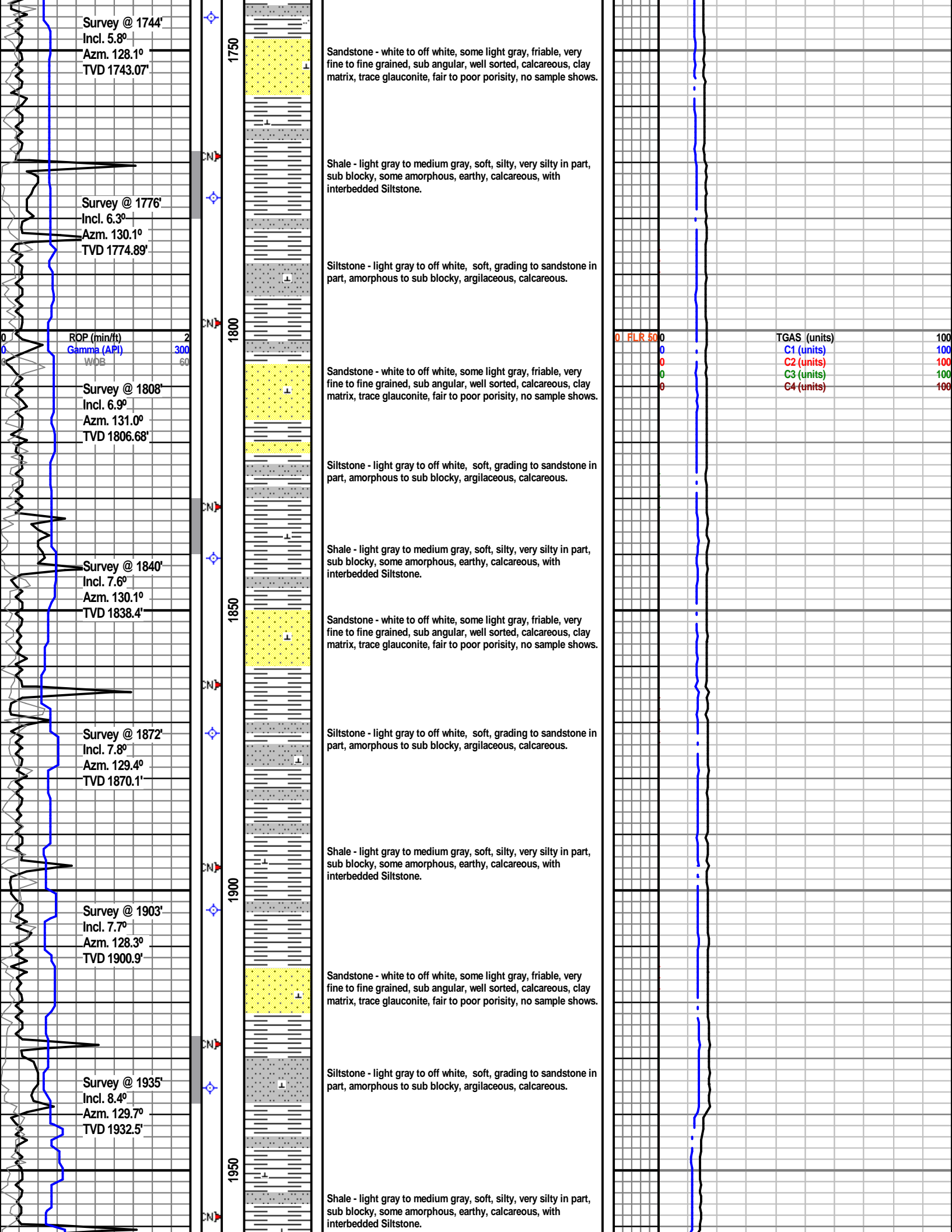
EVENTS

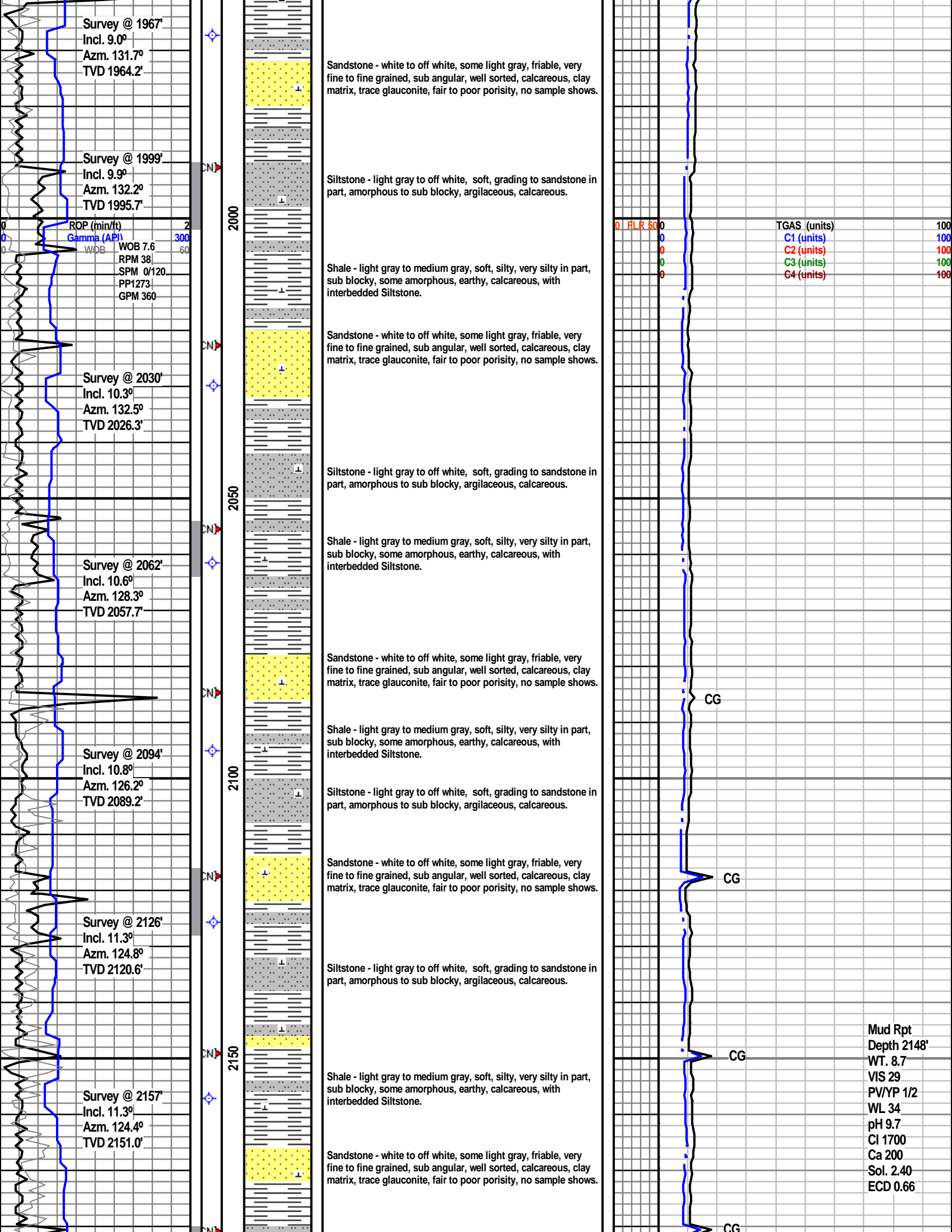
- Trip_point
- New bit
- Connection(cn)
- Survey(mwd)
- Survey(dropped)
- Survey(wireline)
- Casing_shoe(1)
- Off bottom
- Sidewall core











Survey @ 1967'
 Incl. 9.0°
 Azm. 131.7°
 TVD 1964.2'

Survey @ 1999'
 Incl. 9.9°
 Azm. 132.2°
 TVD 1995.7'

ROP (min/ft) 2
 Gamma (API) 300
 WOB 7.6 60
 RPM 38
 SPM 0/120
 PP1273
 GPM 360

Survey @ 2030'
 Incl. 10.3°
 Azm. 132.5°
 TVD 2026.3'

Survey @ 2062'
 Incl. 10.6°
 Azm. 128.3°
 TVD 2057.7'

Survey @ 2094'
 Incl. 10.8°
 Azm. 126.2°
 TVD 2089.2'

Survey @ 2126'
 Incl. 11.3°
 Azm. 124.8°
 TVD 2120.6'

Survey @ 2157'
 Incl. 11.3°
 Azm. 124.4°
 TVD 2151.0'

Sandstone - white to off white, some light gray, friable, very fine to fine grained, sub angular, well sorted, calcareous, clay matrix, trace glauconite, fair to poor porosity, no sample shows.

Siltstone - light gray to off white, soft, grading to sandstone in part, amorphous to sub blocky, argillaceous, calcareous.

Shale - light gray to medium gray, soft, silty, very silty in part, sub blocky, some amorphous, earthy, calcareous, with interbedded Siltstone.

Sandstone - white to off white, some light gray, friable, very fine to fine grained, sub angular, well sorted, calcareous, clay matrix, trace glauconite, fair to poor porosity, no sample shows.

Siltstone - light gray to off white, soft, grading to sandstone in part, amorphous to sub blocky, argillaceous, calcareous.

Shale - light gray to medium gray, soft, silty, very silty in part, sub blocky, some amorphous, earthy, calcareous, with interbedded Siltstone.

Sandstone - white to off white, some light gray, friable, very fine to fine grained, sub angular, well sorted, calcareous, clay matrix, trace glauconite, fair to poor porosity, no sample shows.

Shale - light gray to medium gray, soft, silty, very silty in part, sub blocky, some amorphous, earthy, calcareous, with interbedded Siltstone.

Siltstone - light gray to off white, soft, grading to sandstone in part, amorphous to sub blocky, argillaceous, calcareous.

Sandstone - white to off white, some light gray, friable, very fine to fine grained, sub angular, well sorted, calcareous, clay matrix, trace glauconite, fair to poor porosity, no sample shows.

Siltstone - light gray to off white, soft, grading to sandstone in part, amorphous to sub blocky, argillaceous, calcareous.

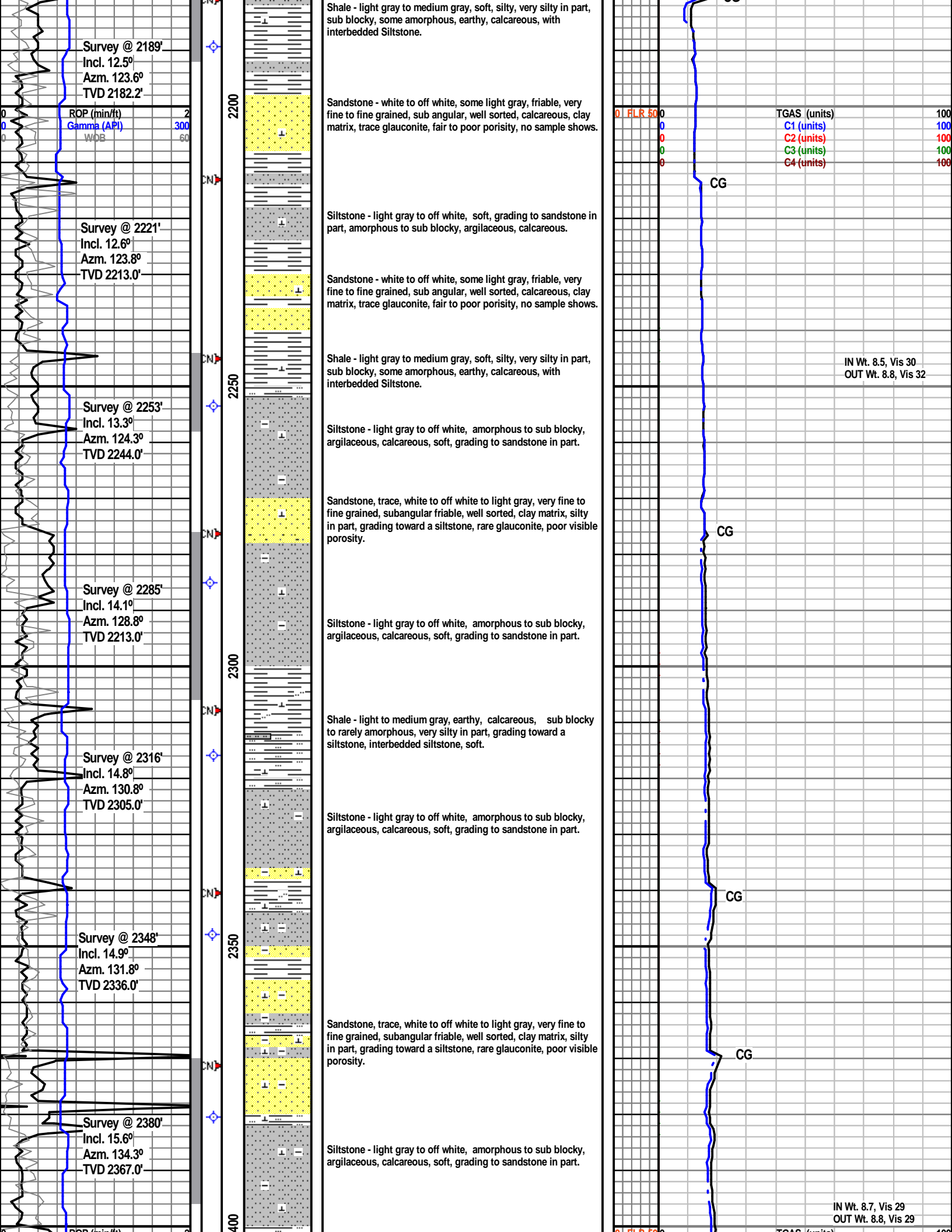
Shale - light gray to medium gray, soft, silty, very silty in part, sub blocky, some amorphous, earthy, calcareous, with interbedded Siltstone.

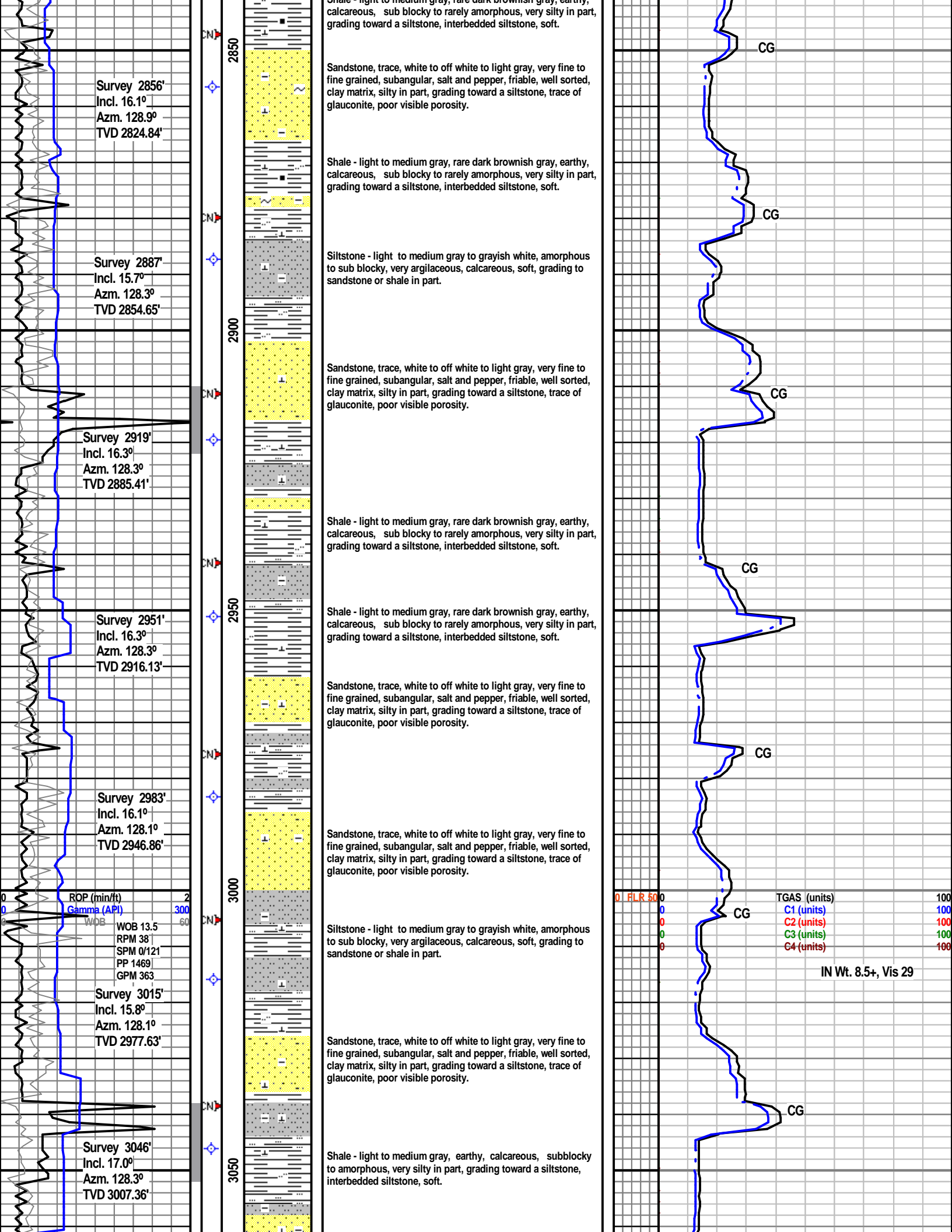
Sandstone - white to off white, some light gray, friable, very fine to fine grained, sub angular, well sorted, calcareous, clay matrix, trace glauconite, fair to poor porosity, no sample shows.

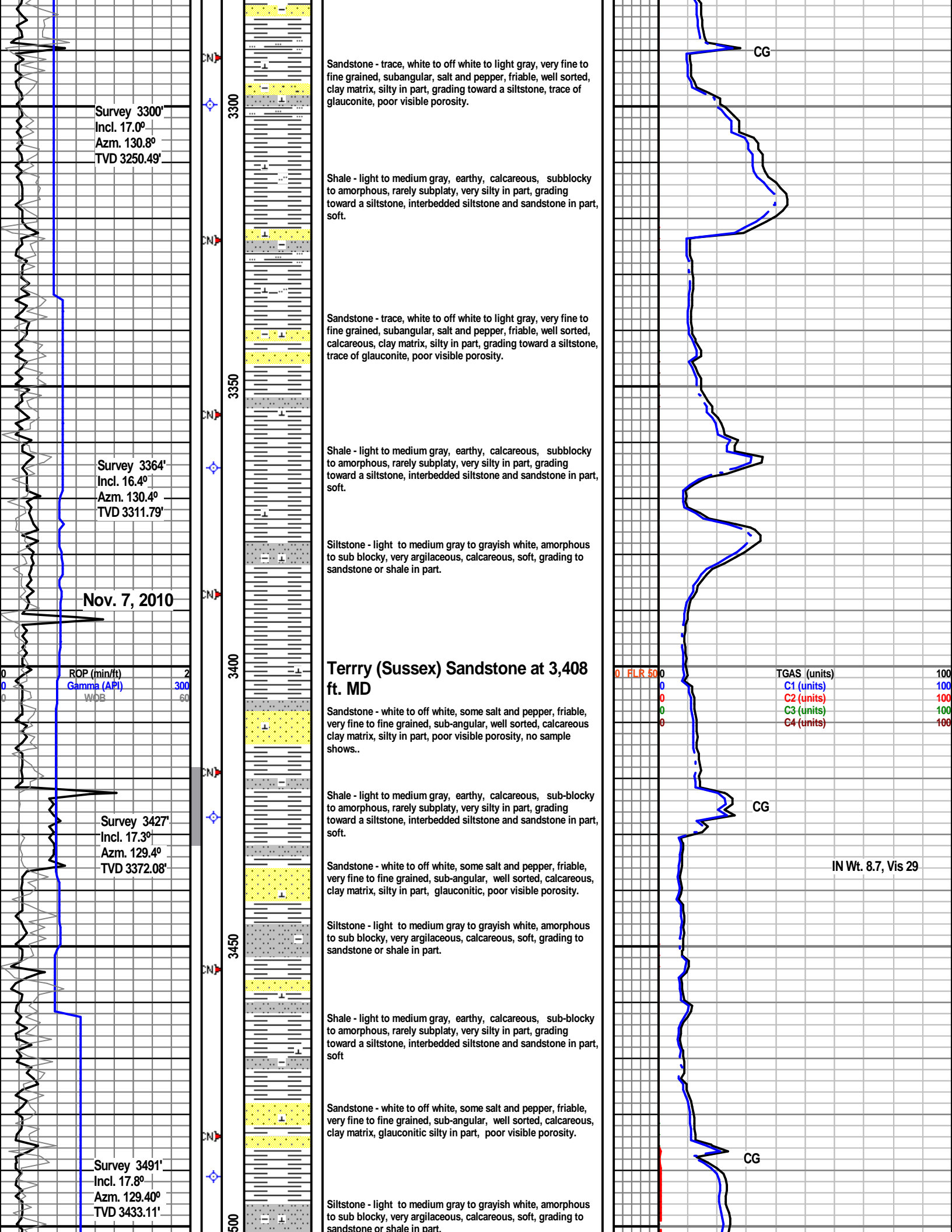
0 FLR 50
 0
 0
 0
 0

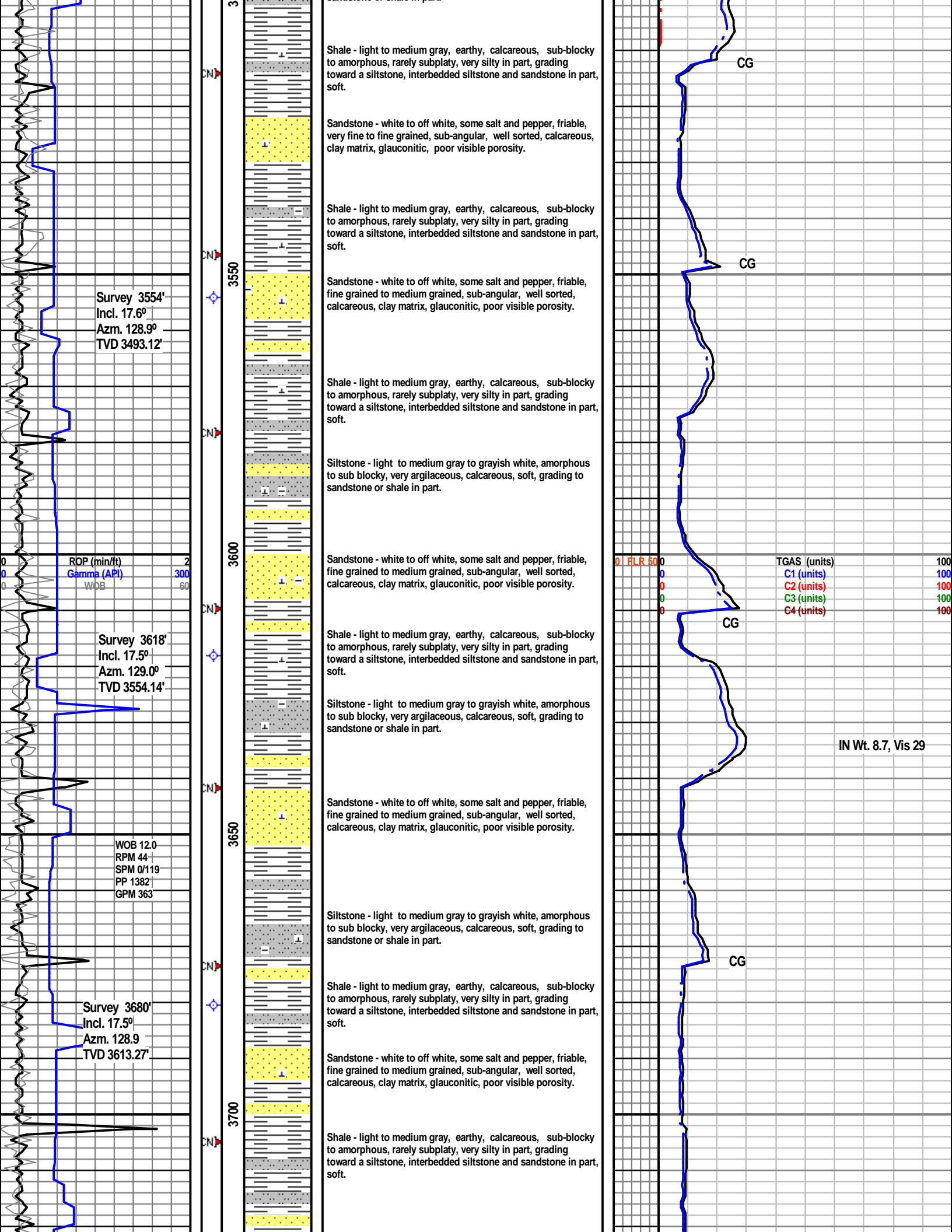
TGAS (units) 100
 C1 (units) 100
 C2 (units) 100
 C3 (units) 100
 C4 (units) 100

Mud Rpt
 Depth 2148'
 WT. 8.7
 VIS 29
 PV/YP 1/2
 WL 34
 pH 9.7
 CI 1700
 Ca 200
 Sol. 2.40
 ECD 0.66









3

CN

CN

CN

CN

CN

CN

3550

3600

3650

3700

Survey 3554'
Incl. 17.6°
Az. 128.9°
TVD 3493.12'

ROP (min/ft) 2
Gamma (API) 300
WOB 60

Survey 3618'
Incl. 17.5°
Az. 129.0°
TVD 3554.14'

WOB 12.0
RPM 44
SPM 0/119
PP 1382
GPM 363

Survey 3680'
Incl. 17.5°
Az. 128.9°
TVD 3613.27'

Shale - light to medium gray, earthy, calcareous, sub-blocky to amorphous, rarely subplaty, very silty in part, grading toward a siltstone, interbedded siltstone and sandstone in part, soft.

Sandstone - white to off white, some salt and pepper, friable, very fine to fine grained, sub-angular, well sorted, calcareous, clay matrix, glauconitic, poor visible porosity.

Shale - light to medium gray, earthy, calcareous, sub-blocky to amorphous, rarely subplaty, very silty in part, grading toward a siltstone, interbedded siltstone and sandstone in part, soft.

Sandstone - white to off white, some salt and pepper, friable, fine grained to medium grained, sub-angular, well sorted, calcareous, clay matrix, glauconitic, poor visible porosity.

Shale - light to medium gray, earthy, calcareous, sub-blocky to amorphous, rarely subplaty, very silty in part, grading toward a siltstone, interbedded siltstone and sandstone in part, soft.

Siltstone - light to medium gray to grayish white, amorphous to sub blocky, very argillaceous, calcareous, soft, grading to sandstone or shale in part.

Sandstone - white to off white, some salt and pepper, friable, fine grained to medium grained, sub-angular, well sorted, calcareous, clay matrix, glauconitic, poor visible porosity.

Shale - light to medium gray, earthy, calcareous, sub-blocky to amorphous, rarely subplaty, very silty in part, grading toward a siltstone, interbedded siltstone and sandstone in part, soft.

Siltstone - light to medium gray to grayish white, amorphous to sub blocky, very argillaceous, calcareous, soft, grading to sandstone or shale in part.

Sandstone - white to off white, some salt and pepper, friable, fine grained to medium grained, sub-angular, well sorted, calcareous, clay matrix, glauconitic, poor visible porosity.

Siltstone - light to medium gray to grayish white, amorphous to sub blocky, very argillaceous, calcareous, soft, grading to sandstone or shale in part.

Shale - light to medium gray, earthy, calcareous, sub-blocky to amorphous, rarely subplaty, very silty in part, grading toward a siltstone, interbedded siltstone and sandstone in part, soft.

Sandstone - white to off white, some salt and pepper, friable, fine grained to medium grained, sub-angular, well sorted, calcareous, clay matrix, glauconitic, poor visible porosity.

Shale - light to medium gray, earthy, calcareous, sub-blocky to amorphous, rarely subplaty, very silty in part, grading toward a siltstone, interbedded siltstone and sandstone in part, soft.

CG

CG

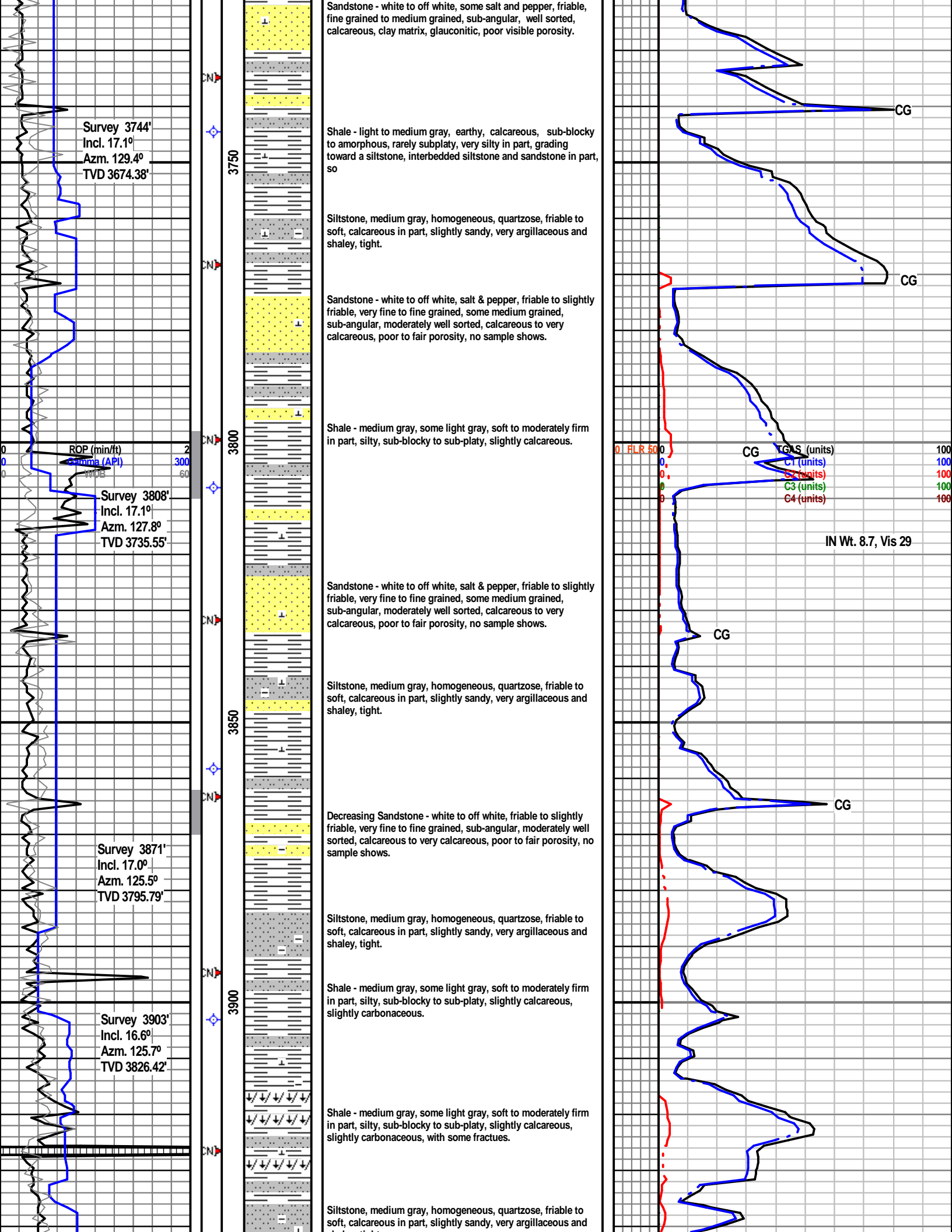
CG

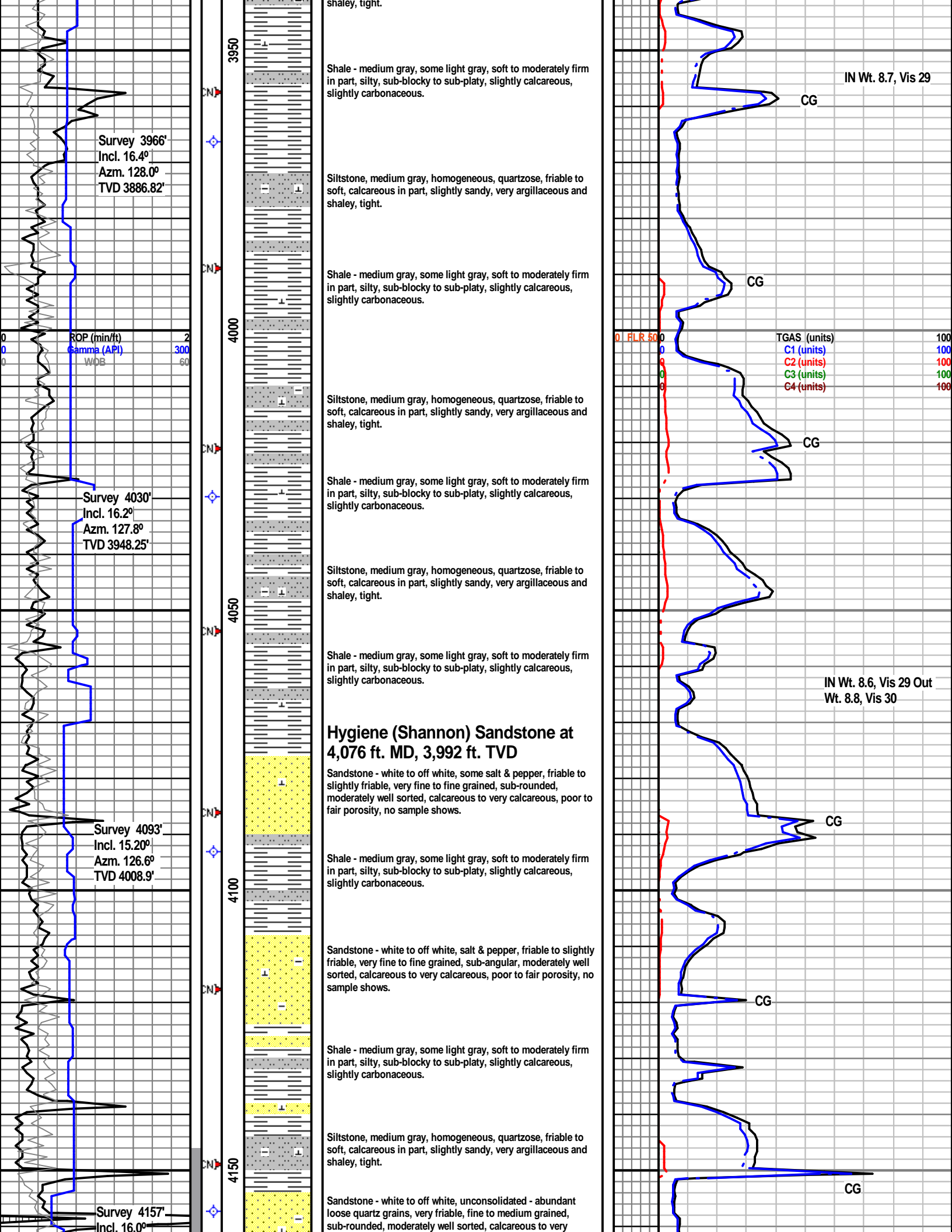
CG

0 FLR 50
0
0
0

TGAS (units)
C1 (units)
C2 (units)
C3 (units)
C4 (units)

IN Wt. 8.7, Vis 29





shaley, tight.
 Shale - medium gray, some light gray, soft to moderately firm in part, silty, sub-blocky to sub-platy, slightly calcareous, slightly carbonaceous.

IN Wt. 8.7, Vis 29

Siltstone, medium gray, homogeneous, quartzose, friable to soft, calcareous in part, slightly sandy, very argillaceous and shaley, tight.

Shale - medium gray, some light gray, soft to moderately firm in part, silty, sub-blocky to sub-platy, slightly calcareous, slightly carbonaceous.

Siltstone, medium gray, homogeneous, quartzose, friable to soft, calcareous in part, slightly sandy, very argillaceous and shaley, tight.

Shale - medium gray, some light gray, soft to moderately firm in part, silty, sub-blocky to sub-platy, slightly calcareous, slightly carbonaceous.

Siltstone, medium gray, homogeneous, quartzose, friable to soft, calcareous in part, slightly sandy, very argillaceous and shaley, tight.

Shale - medium gray, some light gray, soft to moderately firm in part, silty, sub-blocky to sub-platy, slightly calcareous, slightly carbonaceous.

IN Wt. 8.6, Vis 29 Out Wt. 8.8, Vis 30

Hygiene (Shannon) Sandstone at 4,076 ft. MD, 3,992 ft. TVD

Sandstone - white to off white, some salt & pepper, friable to slightly friable, very fine to fine grained, sub-rounded, moderately well sorted, calcareous to very calcareous, poor to fair porosity, no sample shows.

Shale - medium gray, some light gray, soft to moderately firm in part, silty, sub-blocky to sub-platy, slightly calcareous, slightly carbonaceous.

Sandstone - white to off white, salt & pepper, friable to slightly friable, very fine to fine grained, sub-angular, moderately well sorted, calcareous to very calcareous, poor to fair porosity, no sample shows.

Shale - medium gray, some light gray, soft to moderately firm in part, silty, sub-blocky to sub-platy, slightly calcareous, slightly carbonaceous.

Siltstone, medium gray, homogeneous, quartzose, friable to soft, calcareous in part, slightly sandy, very argillaceous and shaley, tight.

Sandstone - white to off white, unconsolidated - abundant loose quartz grains, very friable, fine to medium grained, sub-rounded, moderately well sorted, calcareous to very

Survey 3966'
 Incl. 16.4°
 Azm. 128.0°
 TVD 3886.82'

Survey 4030'
 Incl. 16.2°
 Azm. 127.8°
 TVD 3948.25'

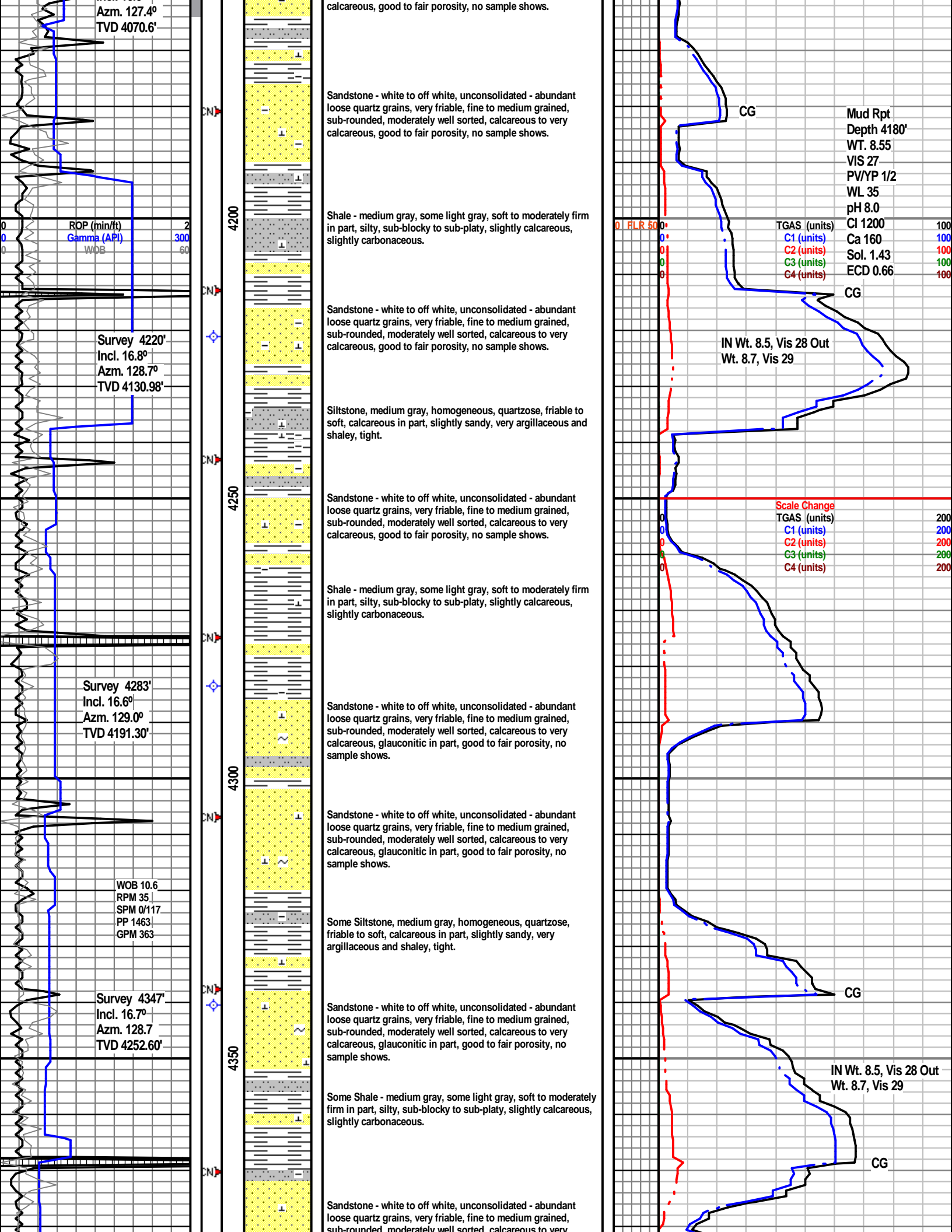
Survey 4093'
 Incl. 15.20°
 Azm. 126.6°
 TVD 4008.9'

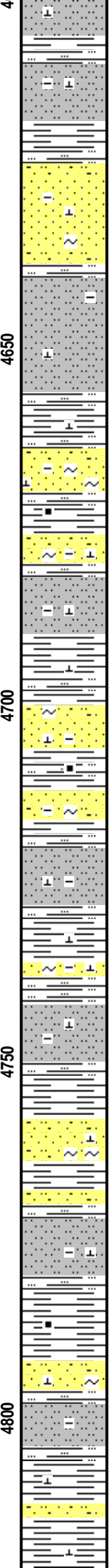
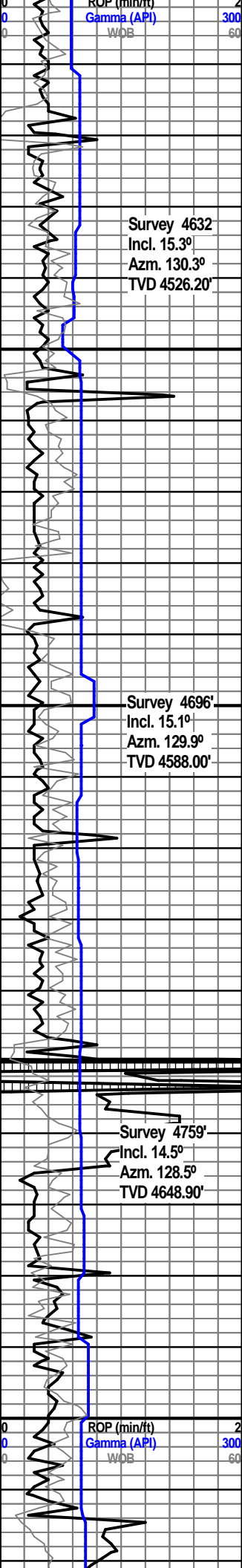
Survey 4157'
 Incl. 16.0°

ROP (min/ft) 2
 Gamma (API) 300
 WOB 60

TGAS (units)
 C1 (units) 100
 C2 (units) 100
 C3 (units) 100
 C4 (units) 100

FLR 50
 0
 0
 0
 0





Siltstone, medium gray, homogeneous, quartzose, calcareous in part, slightly to very sandy, very argillaceous and shaley, tight, friable to soft.

Sandstone - white to off white to light gray, very fine to lower medium grained, mostly consolidated - occasional loose quartz grains, very friable, sub-rounded, moderately well sorted, calcareous to very calcareous, glauconitic in part, shaley and silty in part, good visible porosity, NSFOC.

Shale - medium gray to occasionally light gray, silty to very silty in part, sub-blocky to sub-platy, slightly calcareous, occasionally sandy, slightly carbonaceous, soft to moderately firm in part.

Sandstone - white to off white to light gray, very fine to lower medium grained, mostly consolidated - occasional loose quartz grains, very friable, sub-rounded, moderately well sorted, calcareous to very calcareous, glauconitic in part, shaley and silty in part, good visible porosity, NSFOC.

Siltstone, medium gray, homogeneous, quartzose, calcareous in part, slightly to very sandy, very argillaceous and shaley, tight, friable to soft.

Shale - medium gray to occasionally light gray, silty to very silty in part, sub-blocky to sub-platy, slightly calcareous, occasionally sandy, slightly carbonaceous, soft to moderately firm in part.

Sandstone - white to off white to light gray, very fine to lower medium grained, mostly consolidated - occasional loose quartz grains, very friable, sub-rounded, moderately well sorted, calcareous to very calcareous, glauconitic in part, shaley and silty in part, good visible porosity, NSFOC.

Siltstone, medium gray, homogeneous, quartzose, calcareous in part, slightly to very sandy, very argillaceous and shaley, tight, friable to soft.

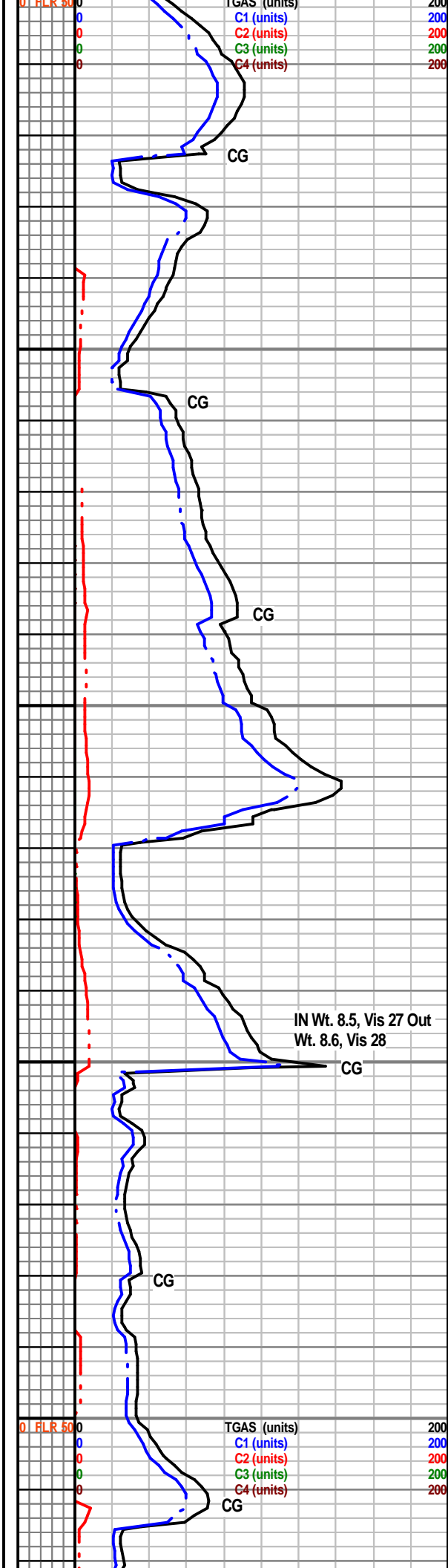
Shale - medium gray to occasionally light gray, silty to very silty in part, sub-blocky to sub-platy, slightly calcareous, occasionally sandy, slightly carbonaceous, soft to moderately firm in part.

Siltstone, medium gray, homogeneous, quartzose, calcareous in part, slightly to very sandy, very argillaceous and shaley, tight, friable to soft.

Shale - medium gray to occasionally light gray, silty to very silty in part, sub-blocky to sub-platy, slightly calcareous, occasionally sandy, slightly carbonaceous, soft to moderately firm in part.

Siltstone, medium gray, homogeneous, quartzose, calcareous in part, slightly to very sandy, very argillaceous and shaley, tight, friable to soft.

Shale - medium gray to occasionally light gray, silty to very silty in part, sub-blocky to sub-platy, slightly calcareous, occasionally sandy, slightly carbonaceous, soft to moderately firm in part.



Survey 4823'
Incl. 15.8°
Az. 127.1°
TVD 4710.70'

Survey 4854'
Incl. 16.4°
Az. 128.1°
TVD 4740.40'

Survey 4918'
Incl. 15.9°
Az. 128.7°
TVD 4802.00'

Survey 4981'
Incl. 16.4°
Az. 128.3°
TVD 4862.48'

ROP (min/ft)
Gamma (API)
WOB

WOB 16.9
RPM 37
SPM 0/120
PP 1488
GPM 358

CN

CN

CN

CN

CN

CN

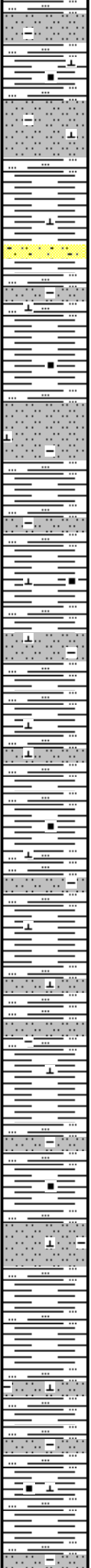
CN

4850

4900

4950

5000



Siltstone, medium gray, homogeneous, quartzose, calcareous in part, slightly to very sandy, very argillaceous and shaley, tight, friable to soft.

Shale - medium gray to occasionally light gray, silty to very silty in part, sub-blocky to sub-platy, slightly calcareous, occasionally sandy, slightly carbonaceous, soft to moderately firm in part.

Shale - medium gray to occasionally light gray, silty to very silty in part, sub-blocky to sub-platy, slightly calcareous, occasionally sandy, slightly carbonaceous, soft to moderately firm in part.

Siltstone, medium gray, homogeneous, quartzose, calcareous in part, slightly to very sandy, very argillaceous and shaley, tight, friable to soft.

Shale - medium gray to occasionally light gray to light brownish gray, silty to very silty in part, sub-blocky to sub-platy to rarely splintery, slightly calcareous, rarely sandy, slightly carbonaceous, soft to moderately firm in part.

Siltstone, medium gray, homogeneous, quartzose, calcareous in part, slightly to very sandy, very argillaceous and shaley, tight, friable to soft.

Shale - medium gray to occasionally light gray to light brownish gray, silty to very silty in part, sub-blocky to sub-platy to rarely splintery, slightly calcareous, rarely sandy, slightly carbonaceous, soft to moderately firm in part.

Shale - medium gray to occasionally light gray to rarely light brownish gray, silty in part, sub-blocky to sub-platy to occasionally splintery, slightly calcareous, slightly carbonaceous in part, soft to moderately firm.

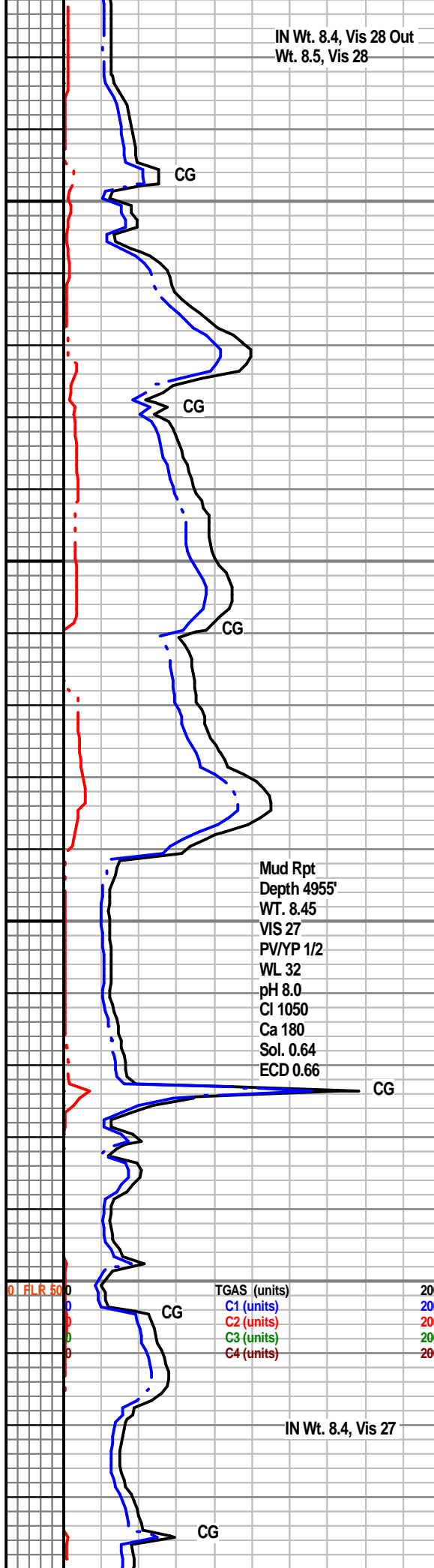
Shale - medium gray to occasionally light gray to rarely light brownish gray, silty in part, sub-blocky to sub-platy to occasionally splintery, slightly calcareous, slightly carbonaceous in part, soft to moderately firm.

Siltstone, medium gray, homogeneous, quartzose, calcareous in part, slightly to very sandy, very argillaceous and shaley, tight, friable to soft.

Shale - medium gray to occasionally light gray to rarely light brownish gray, silty in part, sub-blocky to sub-platy to occasionally splintery, slightly calcareous, slightly carbonaceous in part, soft to moderately firm.

Siltstone, medium gray, homogeneous, quartzose, calcareous in part, slightly to very sandy, very argillaceous and shaley, tight, friable to soft.

Shale - medium gray to occasionally light gray to rarely light brownish gray, silty in part, sub-blocky to sub-platy to occasionally splintery, slightly calcareous, slightly carbonaceous in part, soft to moderately firm.

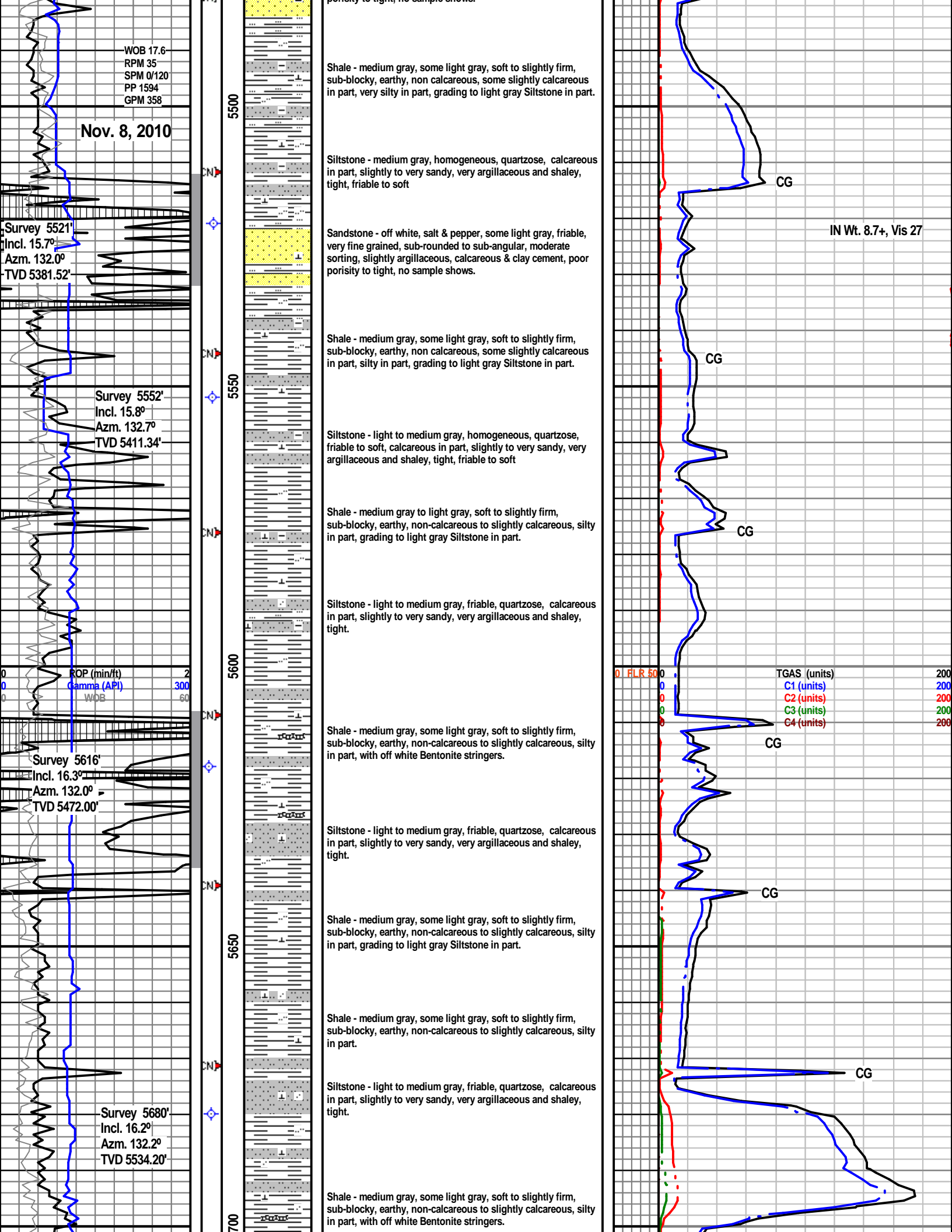


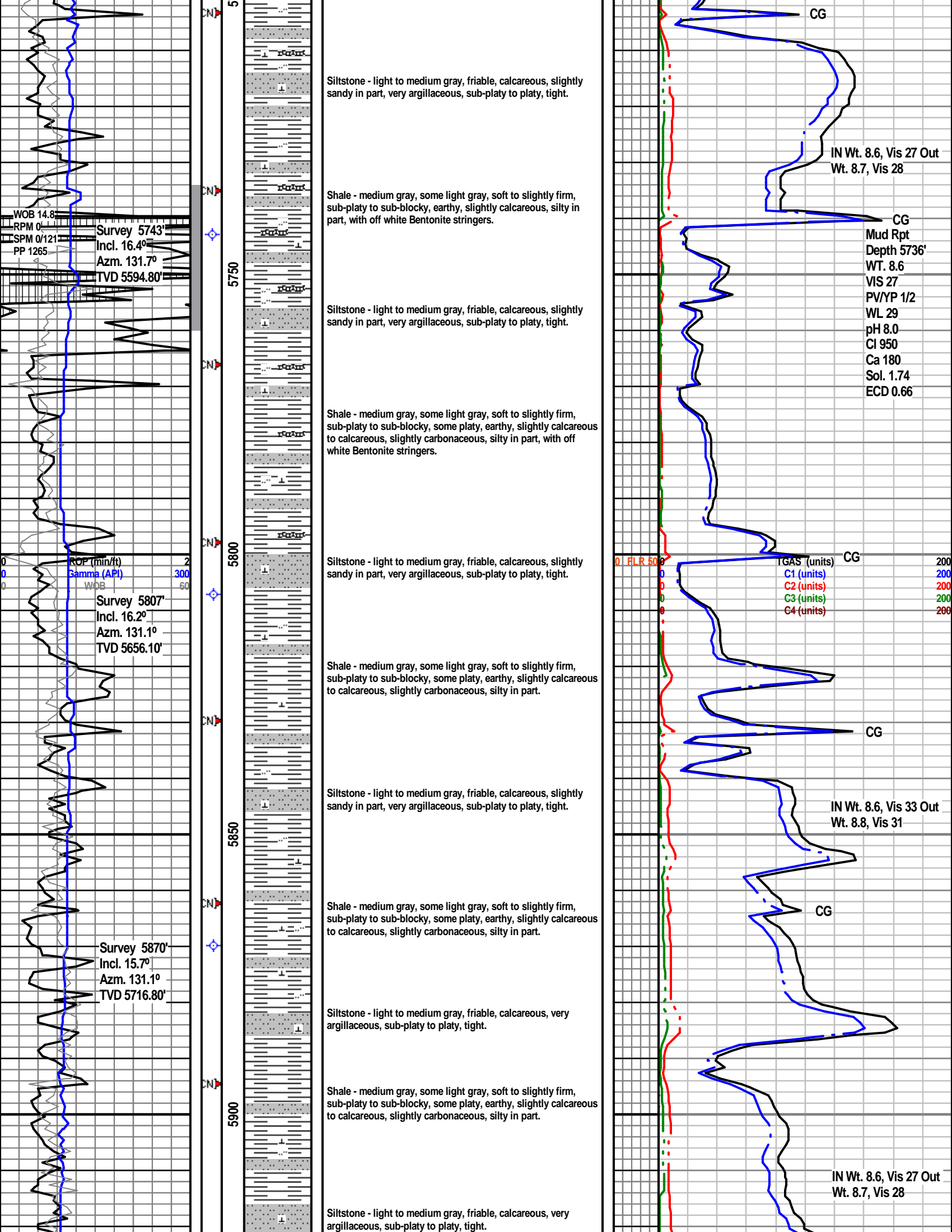
IN Wt. 8.4, Vis 28 Out
Wt. 8.5, Vis 28

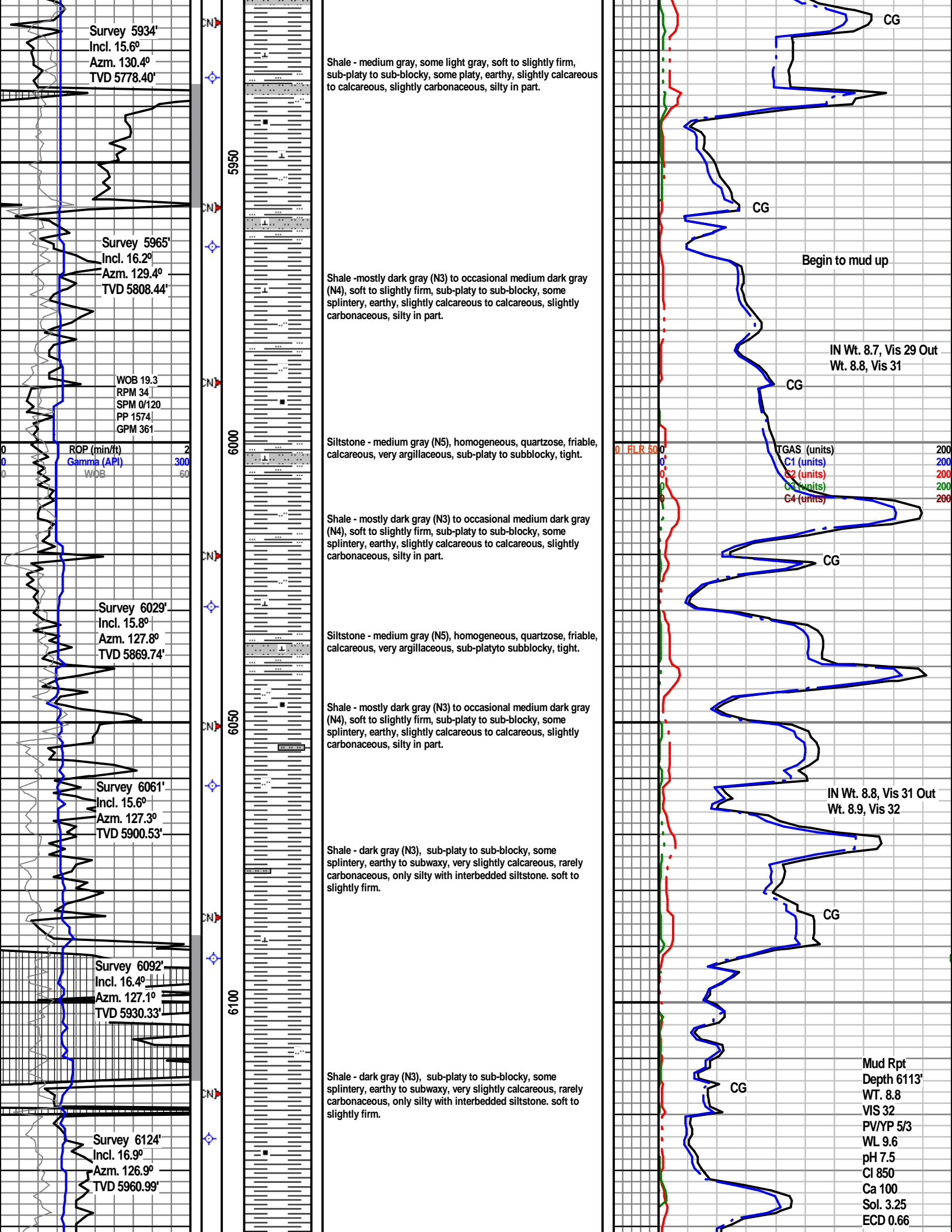
Mud Rpt
Depth 4955'
WT. 8.45
VIS 27
PV/YP 1/2
WL 32
pH 8.0
Cl 1050
Ca 180
Sol. 0.64
ECD 0.66

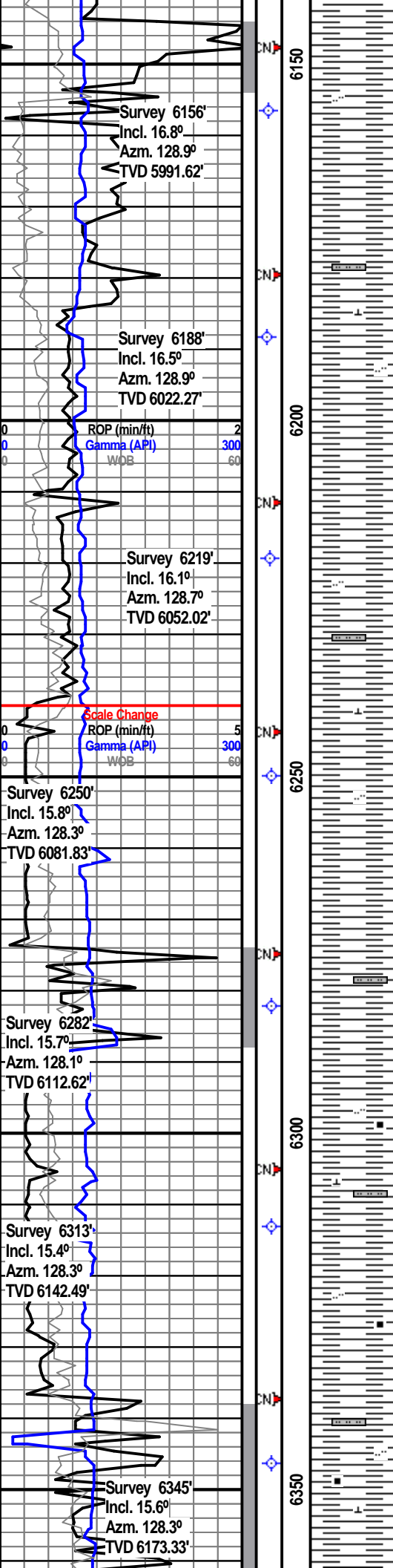
TGAS (units) 200
C1 (units) 200
C2 (units) 200
C3 (units) 200
C4 (units) 200

IN Wt. 8.4, Vis 27









Shale - dark gray (N3), sub-platy to sub-blocky, some splintery, earthy to subwaxy, very slightly calcareous, rarely carbonaceous, only silty with interbedded siltstone. soft to slightly firm.

Shale - dark gray (N3), sub-platy to sub-blocky, some splintery, earthy to subwaxy, very slightly calcareous, rarely carbonaceous, only silty with interbedded siltstone. soft to slightly firm.

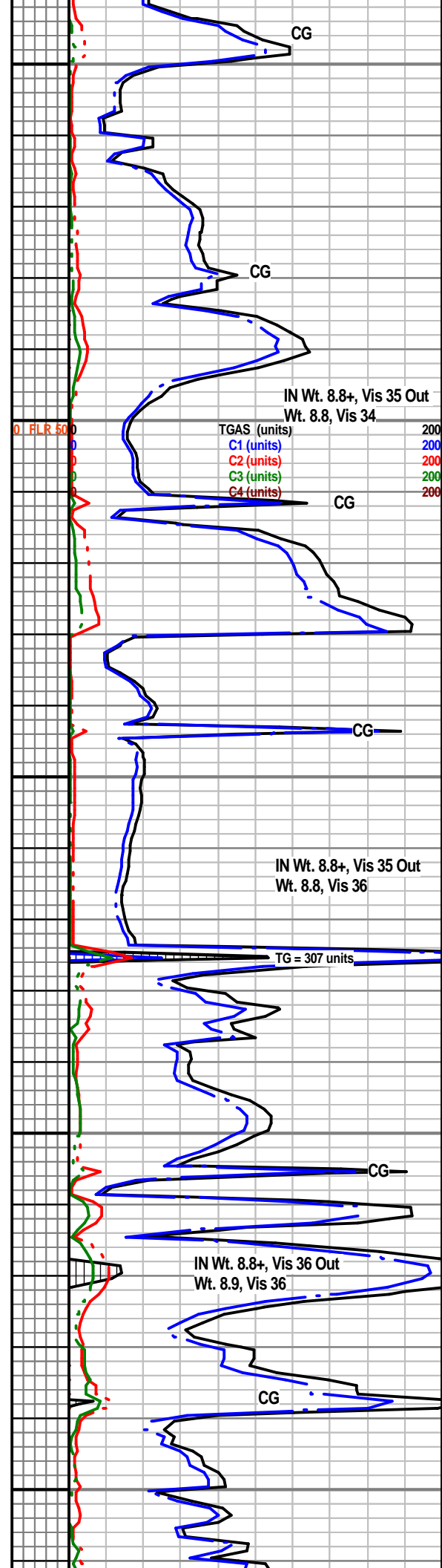
Shale - dark gray, soft to slightly firm, sub-platy to sub-blocky, some splintery, earthy to subwaxy, very slightly calcareous, rarely carbonaceous, silty with interbedded siltstone.

Shale - dark gray, rare brownish gray, soft to slightly firm, sub-platy to sub-blocky, some splintery, earthy to subwaxy, very slightly calcareous, rarely carbonaceous, silty with interbedded siltstone.

Shale - dark gray, trace of brownish gray, soft to slightly firm, sub-platy to sub-blocky, some splintery, earthy to subwaxy, very slightly calcareous, rarely carbonaceous, silty with interbedded siltstone.

Shale - dark gray (N3), trace of brownish gray (5YR 4/1) sub-platy to sub-blocky, some splintery, earthy to subwaxy, very slightly calcareous, rarely carbonaceous, only silty with interbedded siltstone. soft to slightly firm.

Shale - dark gray (N3), trace of brownish gray (5YR 4/1) sub-platy to sub-blocky, some splintery, earthy to subwaxy, very slightly calcareous, rarely carbonaceous, only silty with interbedded siltstone. soft to slightly firm.



Nov. 9, 2010

Marker #6 at 6,372 ft. MD, 6,200 ft. TVD

Survey 6377'
Incl. 15.6°
Az. 128.5°
TVD 6204.15'

WOB 16.2
RPM 35
SPM 0/119
PP 1438
GPM 408

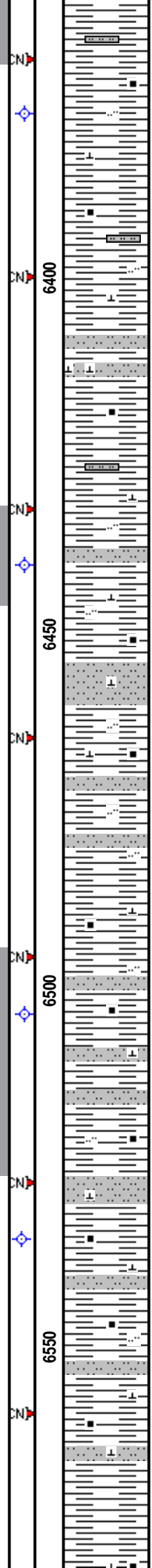
ROP (min/ft) 5
Gamma (API) 300
WOB 60

Survey 6440'
Incl. 15.4°
Az. 128.7°
TVD 6264.85'

WOB 14.3
RPM 35
SPM 0/117
PP 1449
GPM 408

Survey 6504'
Incl. 15.8°
Az. 128.3°
TVD 6326.51'

Survey 6535'
Incl. 16.4°
Az. 127.4°
TVD 6356.29'



Shale - medium grayish brown, some dark gray, moderately soft to firm, predominantly sub blocky, silty in parts, earthy, slightly calcareous, slightly carbonaceous.

Siltstone - medium to dark gray, some grayish brown, small dark gray/black inclusions in part, soft, sub-blocky, sub platy in parts, argillaceous, slightly calcareous.

Shale - medium grayish brown, some dark gray, soft to slightly firm, sub-blocky, silty in part, earthy, slightly calcareous, slightly carbonaceous.

Interbedded Siltstone - medium to light gray, some grayish brown, small dark gray/black inclusions in part, soft, sub-blocky, sub platy in parts, argillaceous, slightly calcareous.

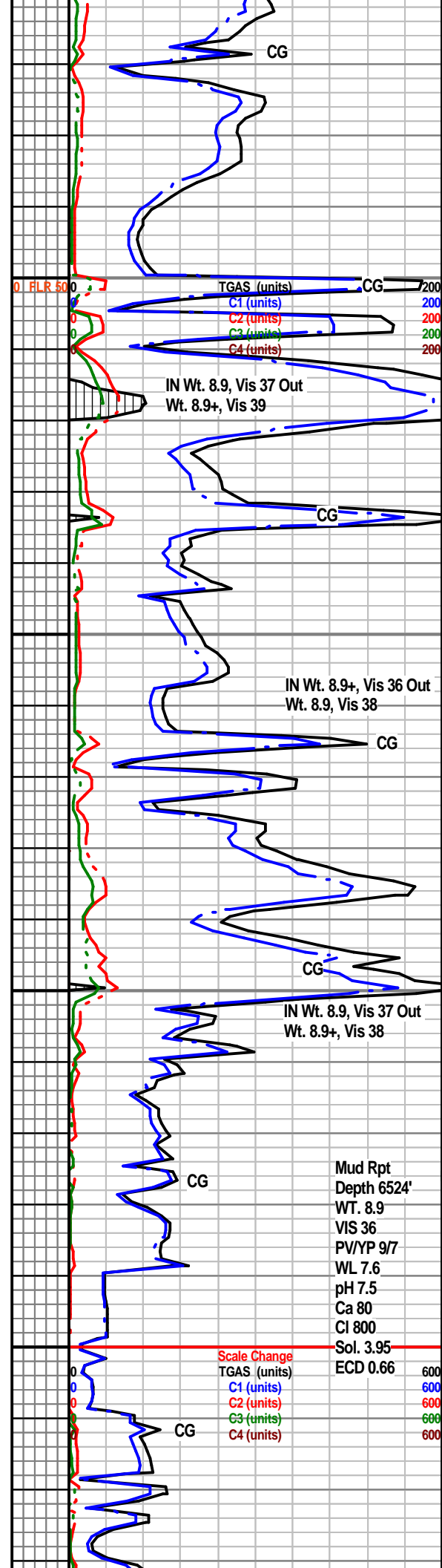
Shale - medium gray to dark gray, soft to slightly soft, platy to sub-platy, some sub-blocky, silty in part, calcareous, carbonaceous with black carbonaceous inclusions.

Shale - medium grayish brown, some dark gray, soft to slightly firm, sub-blocky, silty in part, earthy, slightly calcareous, slightly carbonaceous to carbonaceous.

Interbedded Siltstone - medium to light gray, some grayish brown, small dark gray/black inclusions in part, soft, sub-blocky, sub platy in parts, argillaceous, calcareous.

Shale - medium gray to dark gray, soft to slightly soft, platy to sub-platy, some sub-blocky, silty in part, calcareous, carbonaceous with black carbonaceous inclusions.

Shale - medium gray to dark gray, soft to slightly soft, platy to sub-platy, some sub-blocky, silty in part, calcareous, carbonaceous with black carbonaceous inclusions.



FLR 50

TGAS (units) CG
C1 (units) 200
C2 (units) 200
C3 (units) 200
C4 (units) 200

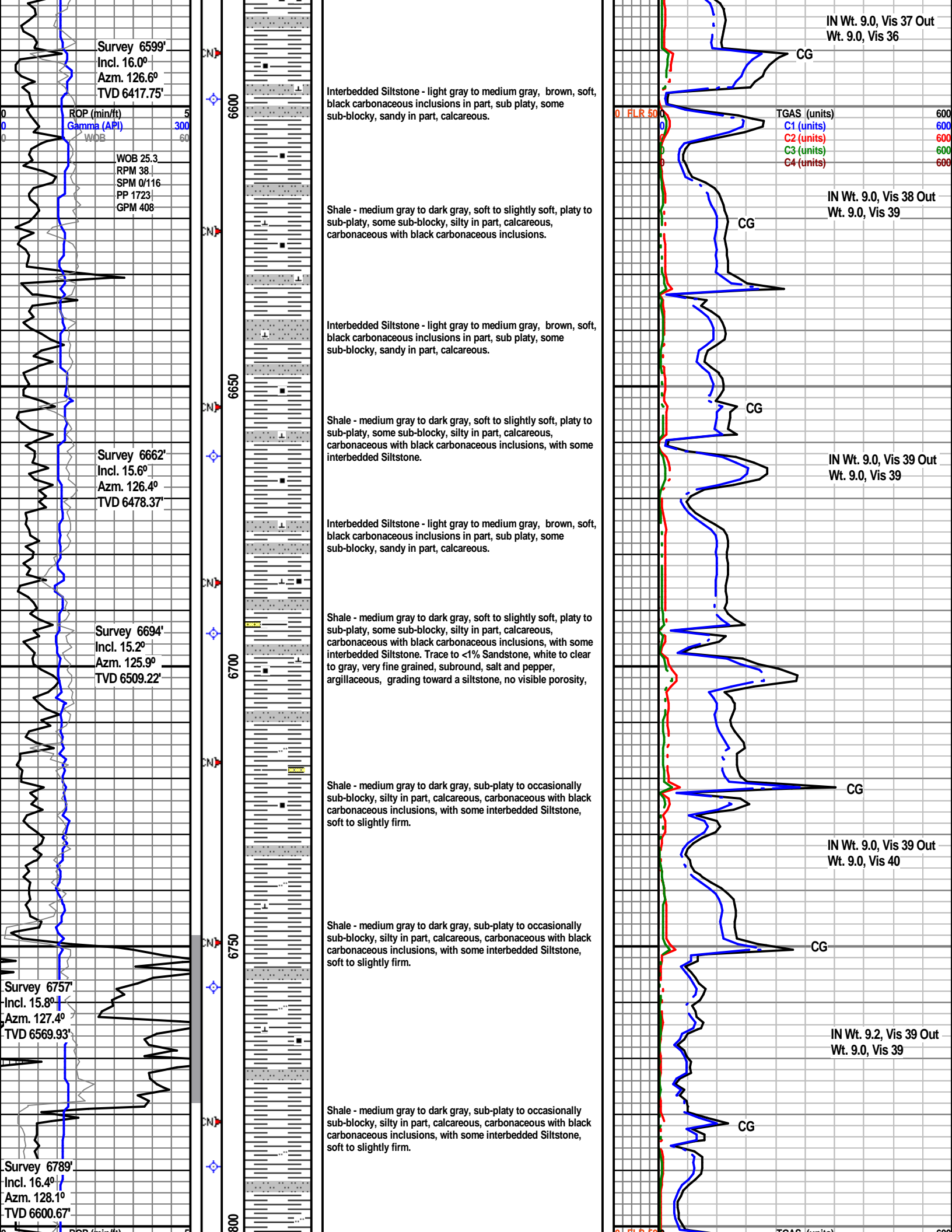
IN Wt. 8.9, Vis 37 Out
Wt. 8.9+, Vis 39

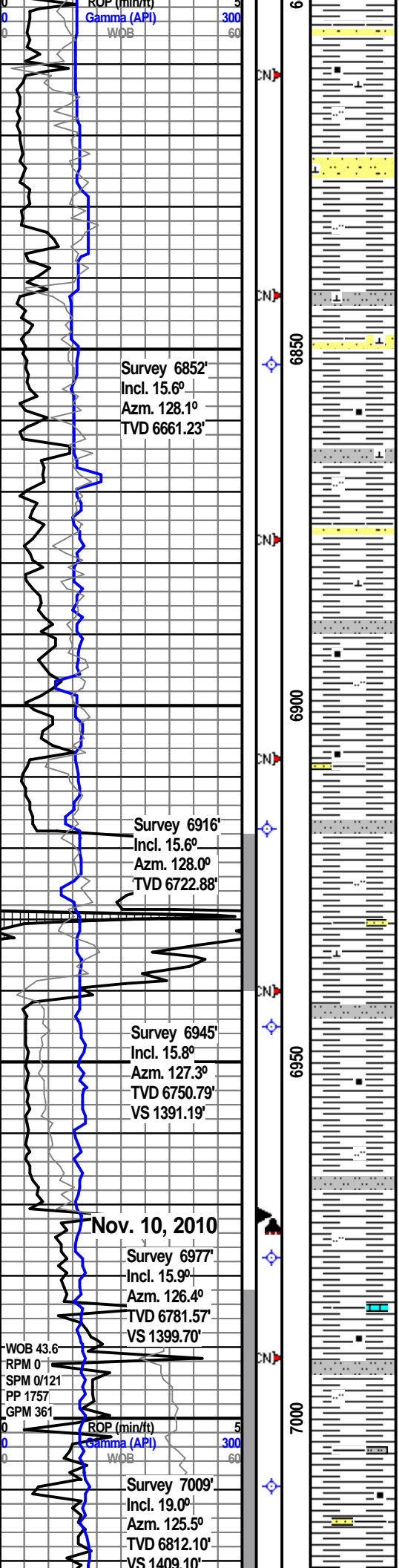
IN Wt. 8.9+, Vis 36 Out
Wt. 8.9, Vis 38

IN Wt. 8.9, Vis 37 Out
Wt. 8.9+, Vis 38

Mud Rpt
Depth 6524'
WT. 8.9
VIS 36
PV/YP 9/7
WL 7.6
pH 7.5
Ca 80
Cl 800
Sol. 3.95
ECD 0.66

Scale Change
TGAS (units)
C1 (units)
C2 (units)
C3 (units)
C4 (units)





Sandstone stringers (10%), white to clear, lower very fine grained to upper very fine grained, subround, salt and pepper, moderate to little clay filling, very slightly calcareous, fair visible porosity, faint yellow gold fluorescence, faint blooming yellow cut when crushed, no ring or film left when dry.

Shale - medium gray to dark gray, sub-platy to occasionally sub-blocky, silty in part, calcareous, carbonaceous with black carbonaceous inclusions, with some interbedded Siltstone, soft to slightly firm.

Sandstone stringers (10%), white to clear, lower very fine grained to upper very fine grained, subround, salt and pepper, moderate to little clay filling, very slightly calcareous, fair visible porosity, faint yellow gold fluorescence, faint blooming yellow cut when crushed, no ring or film left when dry.

Shale - medium gray to dark gray, sub-platy to occasionally sub-blocky, silty in part, calcareous, carbonaceous with black carbonaceous inclusions, with some interbedded Siltstone, soft to slightly firm.

Shale - medium gray to dark gray, sub-platy to occasionally sub-blocky, silty in part, calcareous, carbonaceous with black carbonaceous inclusions, with some interbedded Siltstone, soft to slightly firm.

Shale - medium gray to dark gray, sub-platy to occasionally sub-blocky, silty in part, calcareous, carbonaceous with black carbonaceous inclusions, with some interbedded Siltstone, soft to slightly firm.

Shale - medium gray to dark gray, sub-platy to occasionally sub-blocky, silty in part, calcareous, carbonaceous with black carbonaceous inclusions, with some interbedded Siltstone, soft to slightly firm.

Bit #1, 8 3/4 in., STC, M-516, cut 5,697 ft. in 90.50 hrs.

Kickoff point at 6,971 ft. reached at 2035 hrs on November 9, 2010.

New Bit #2, 8 3/4 in., Hughes, GT-1, in at 6,971 ft.

Shale - medium gray to dark gray, sub-platy to occasionally sub-blocky, rarely splintery, silty in part, earthy to subwaxy, calcareous, slightly carbonaceous with black carbonaceous inclusions, occasional interbedded Siltstone, soft to slightly firm. Trace Limestone, medium to dark gray, micrycrystalline, subblocky, hard.

Shale - medium gray (N5) to mostly dark gray (N3), sub-platy to occasionally sub-blocky, splintery in part, earthy to subwaxy, very slightly silty in part, non calcareous, slightly carbonaceous with black carbonaceous inclusions, soft to brittle, occasional interbedded medium gray Siltstone and

