



SUPERIOR  
Hays,  
Kansas

## SONIC LOG

Company	MULL DRILLING COMPANY, INC.	Company	MULL DRILLING COMPANY, INC.	Location:	API # : 05-061-06841-0000	Other Services CDL/CNL/PE DIL/MEL
Well	THOR UNIT #1-27	Well	THOR UNIT #1-27	SEC 27 TWP 18S RGE 45W		Elevation
Field	WILDCAT	Field	WILDCAT	2636' FNL & 939' FEL		K.B. 3926 D.F. 3924 G.L. 3913
County	KIOWA	County	KIOWA			
State	COLORADO	State	COLORADO			
Permanent Datum	GROUND LEVEL	Elevation	3913			
Log Measured From	KELLY BUSHING 13' A.G.L.					
Drilling Measured From	KELLY BUSHING					
Date	4-30-10					
Run Number	TWO					
Depth Driller	4990					
Depth Logger	4990					
Bottom Logged Interval	4980					
Top Log Interval	280					
Casing Driller	8 5/8" @ 315					
Casing Logger	314					
Bit Size	7 7/8					
Type Fluid in Hole	CHEMICAL MUD	CHLORIDES 3800 PPM				
Density / Viscosity	9.0/65					
pH / Fluid Loss	10.0/9.6					
Source of Sample	FLOWLINE					
Rm @ Meas. Temp	.65 @ 87F					
Rmf @ Meas. Temp	.48 @ 87F					
Rmc @ Meas. Temp	.76 @ 87F					
Source of Rmf / Rmc	MEASURED					
Rm @ BHT	.45 @ 125F					
Time Circulation Stopped	2 HOURS					
Time Logger on Bottom						
Maximum Recorded Temperature	125F					
Equipment Number	680					
Location	HAYS, KS.					
Recorded By	JASON CAPPELLUCCI					
Witnessed By	PHIL ASKEY					

<<< Fold Here >>>

All interpretations are opinions based on inferences from electrical or other measurements and we cannot and do not guarantee the accuracy or correctness of any interpretation, and we shall not, except in the case of gross or willful negligence on our part, be liable or responsible for any loss, costs, damages, or expenses incurred or sustained by anyone resulting from any interpretation made by any of our officers, agents or employees. These interpretations are also subject to our general terms and conditions set out in our current Price Schedule.

### Comments

THANK YOU FOR USING SUPERIOR WELL SERVICE (785) 628-6395  
DIRECTIONS  
EAST EDGE OF BRANDON CO. - 1 1/2 N. - 1/2 W. INTO

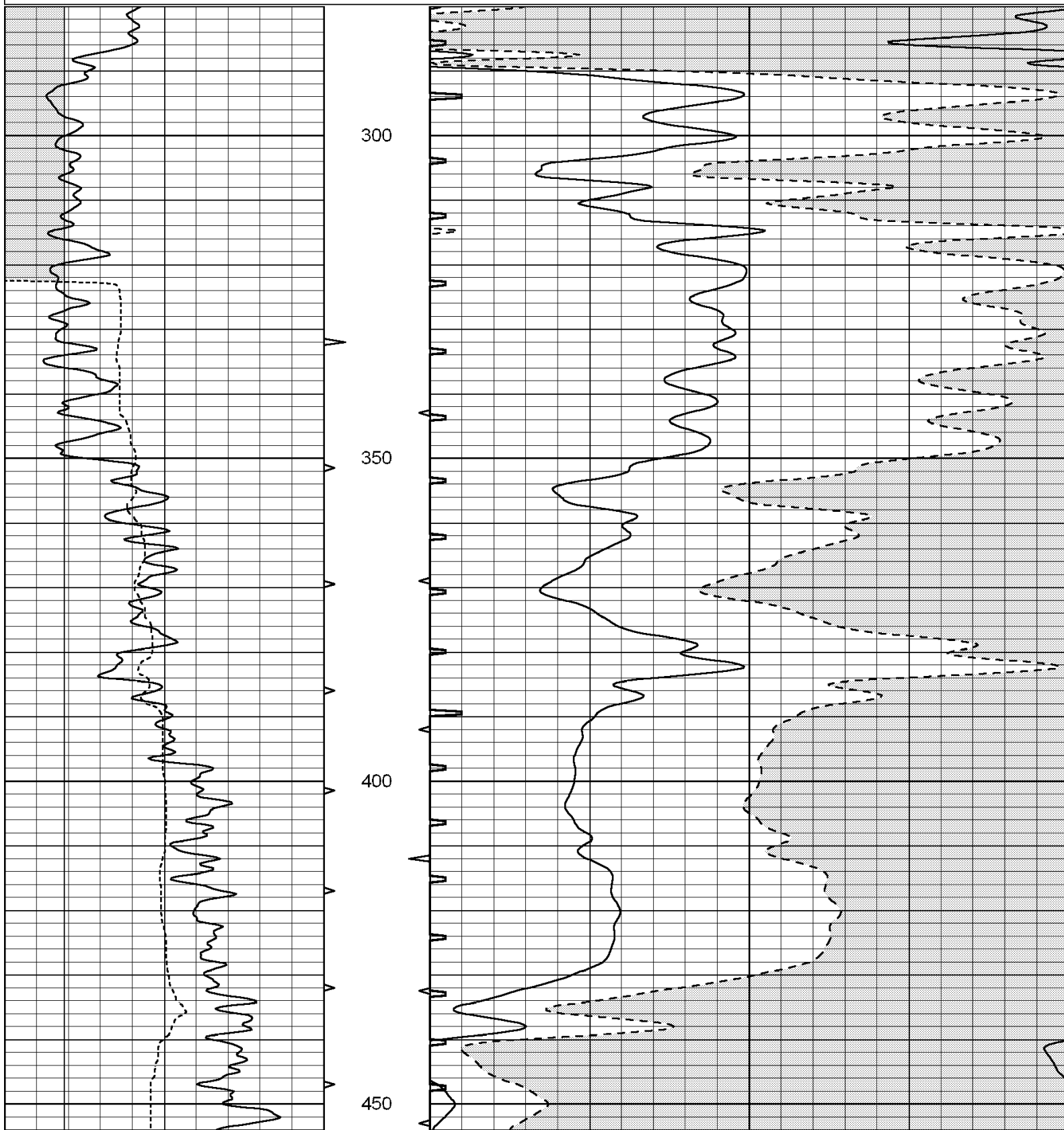


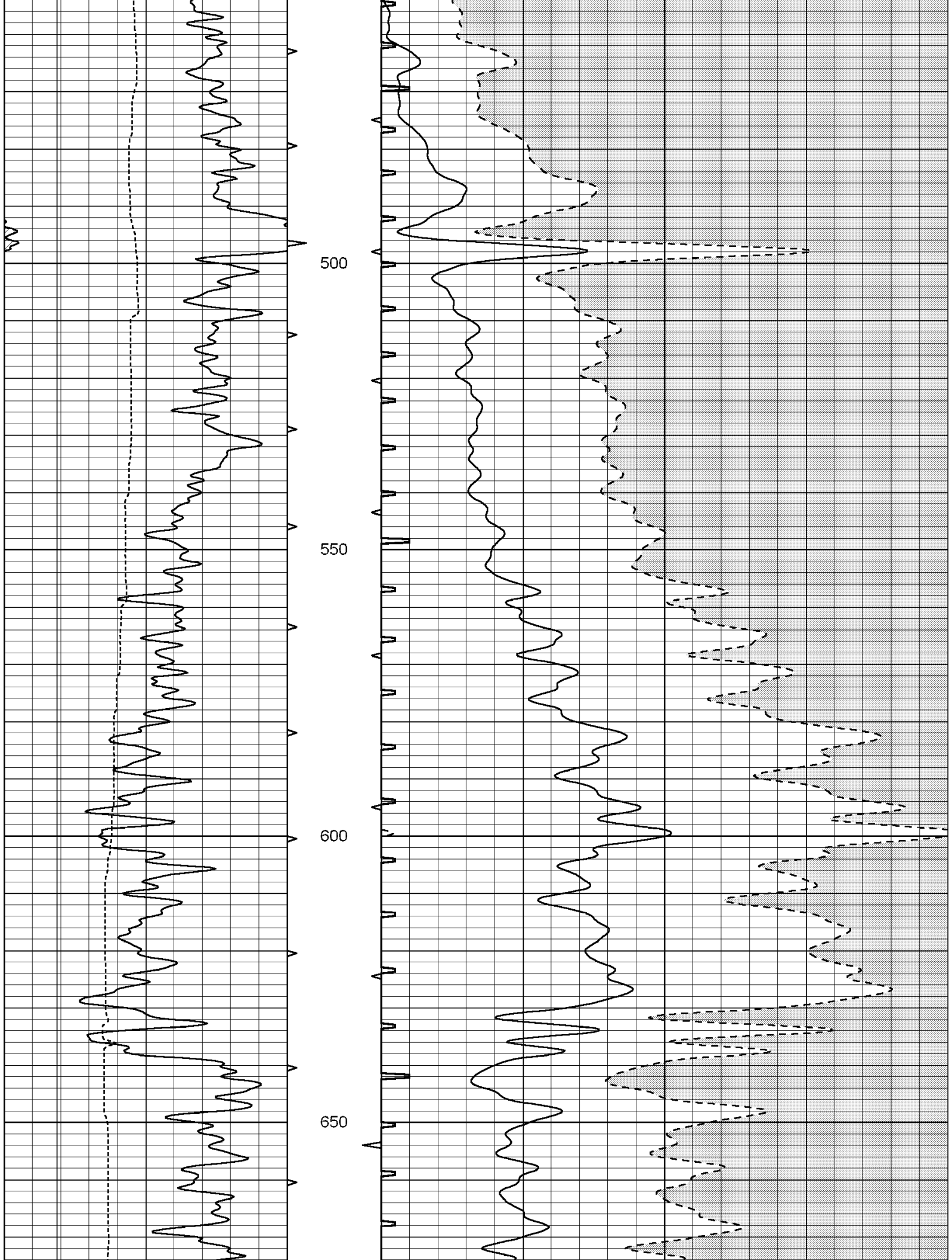
SUPERIOR  
Hays,  
Kansas

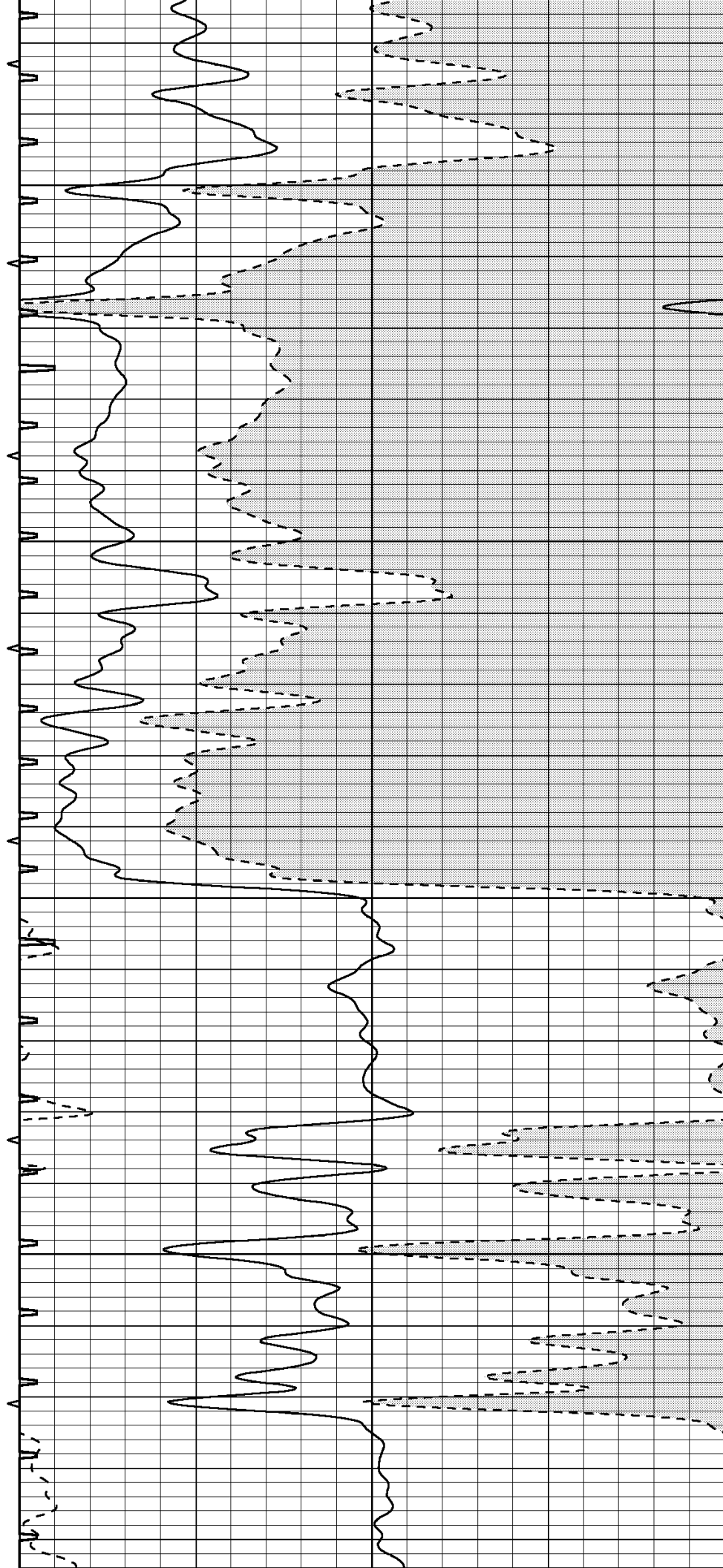
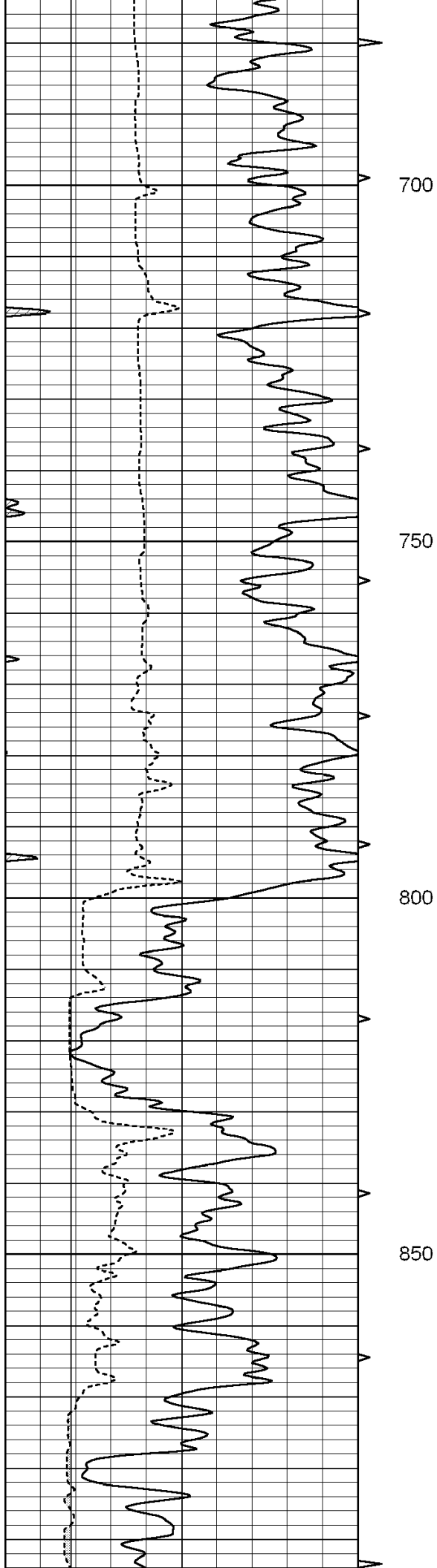
# MAIN SECTION

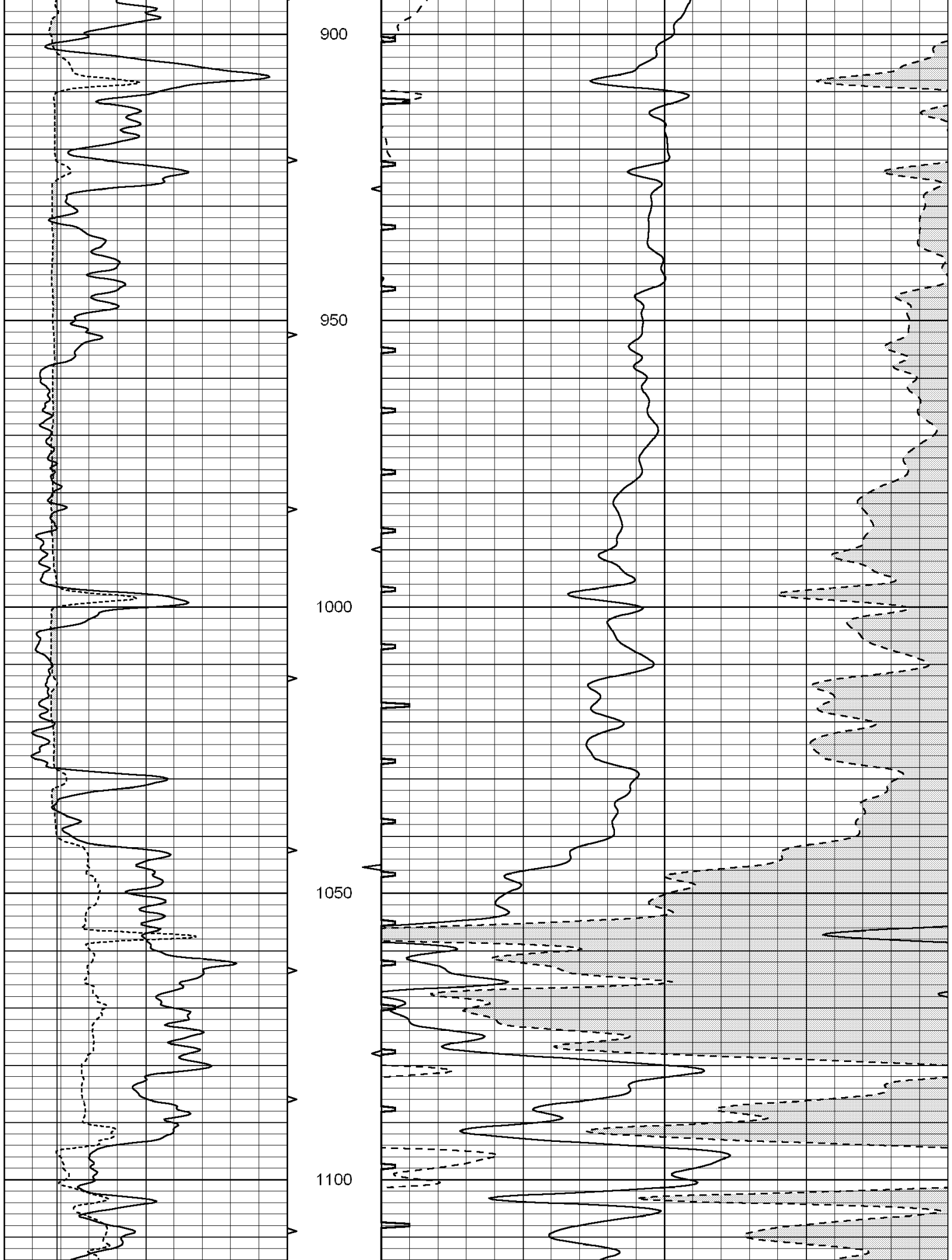
Database File: 005122pe.db  
Dataset Pathname: pass7.2  
Presentation Format: \_slt  
Dataset Creation: Sat May 01 03:02:52 2010 by Calc Open-Cased 090629  
Charted by: Depth in Feet scaled 1:240

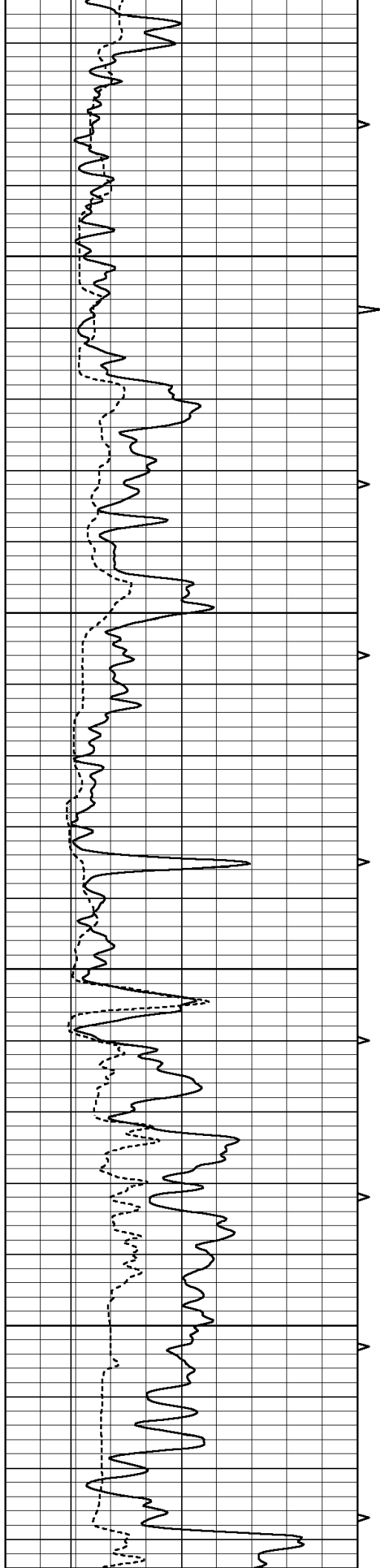
0	GAMMA RAY (GAPI)	150	ABHV	140	DELTA TIME (usec/ft)	40
6	CALIPER (in)	16	10 (ft3) 0	30	SONIC POROSITY (pu)	-10
			TBHV	0	ITT (msec)	20
			0 (ft3) 10			









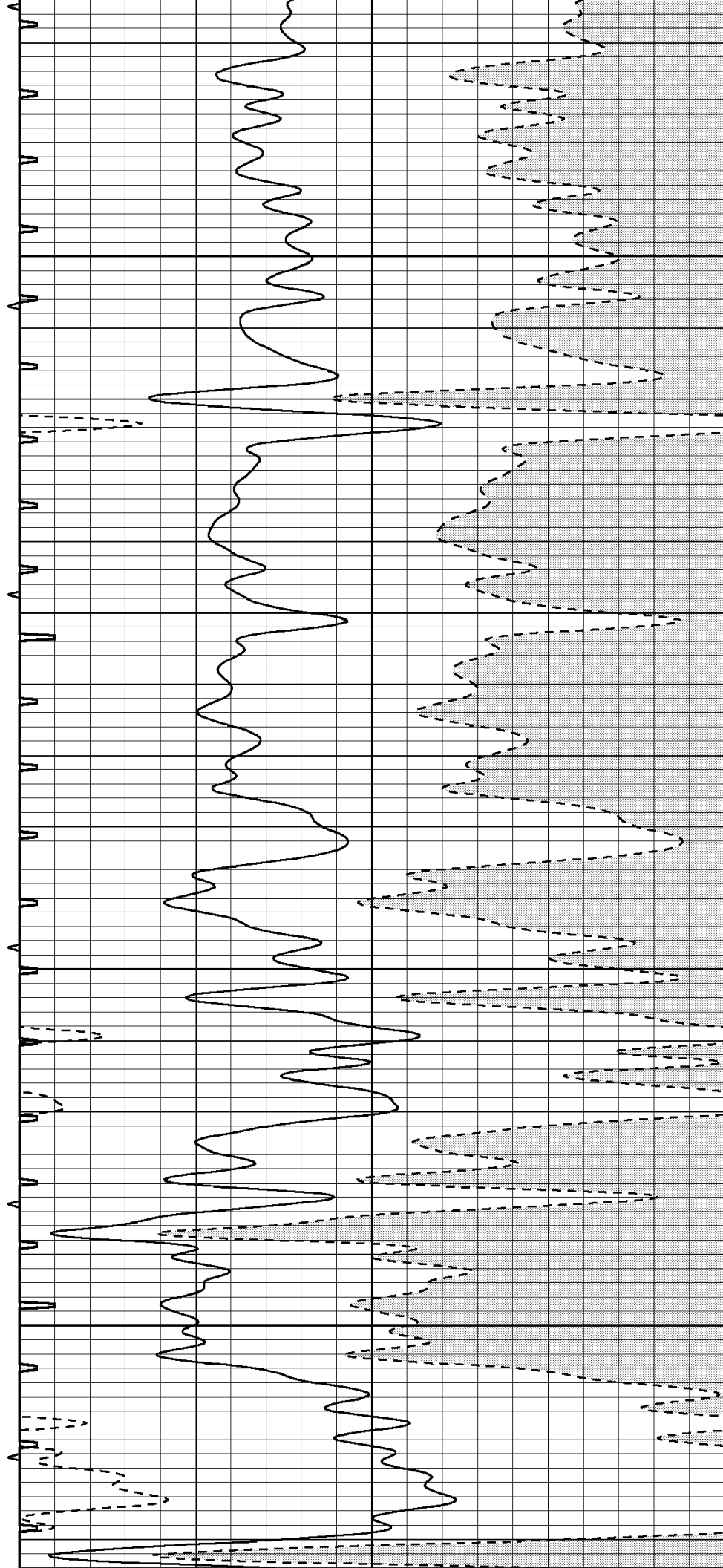


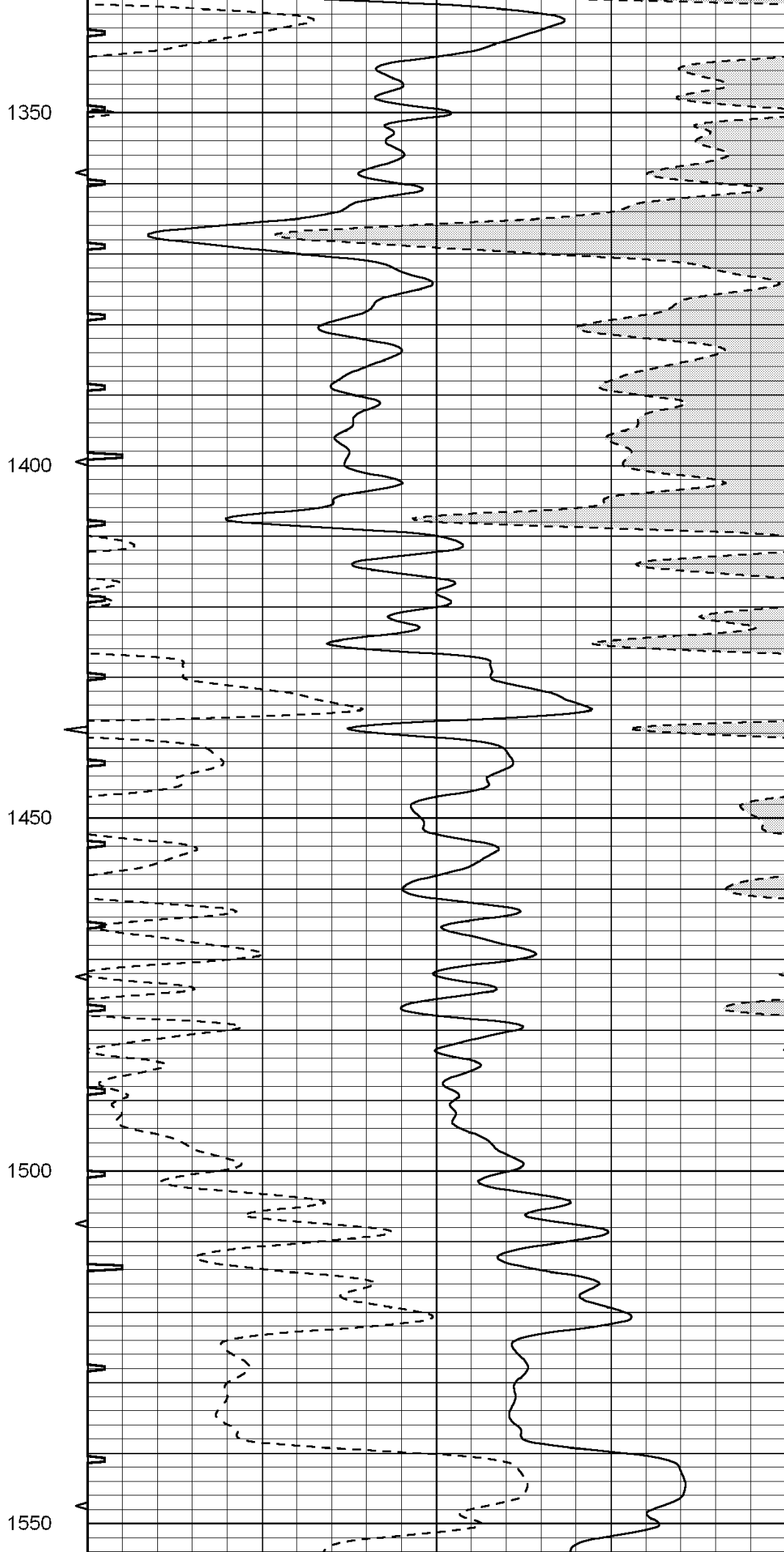
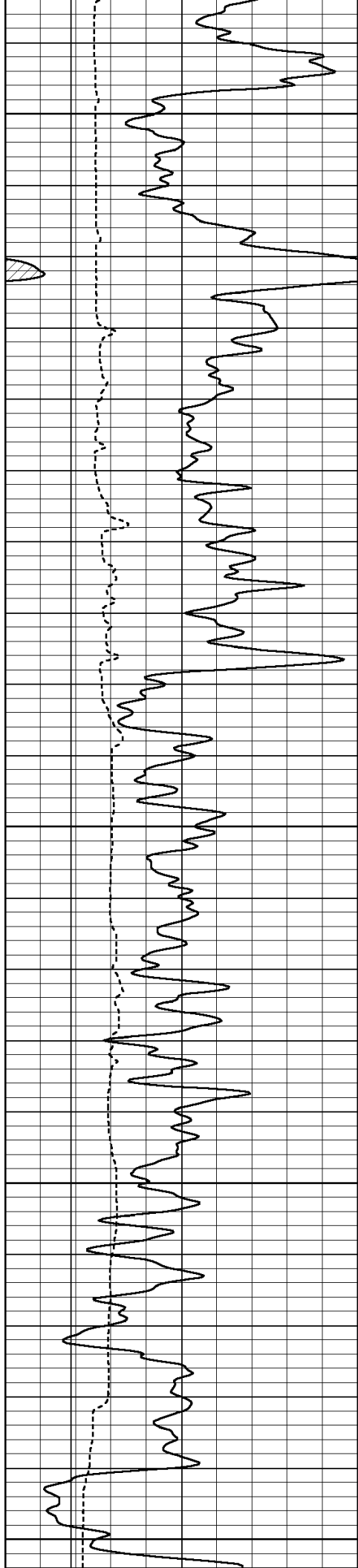
1150

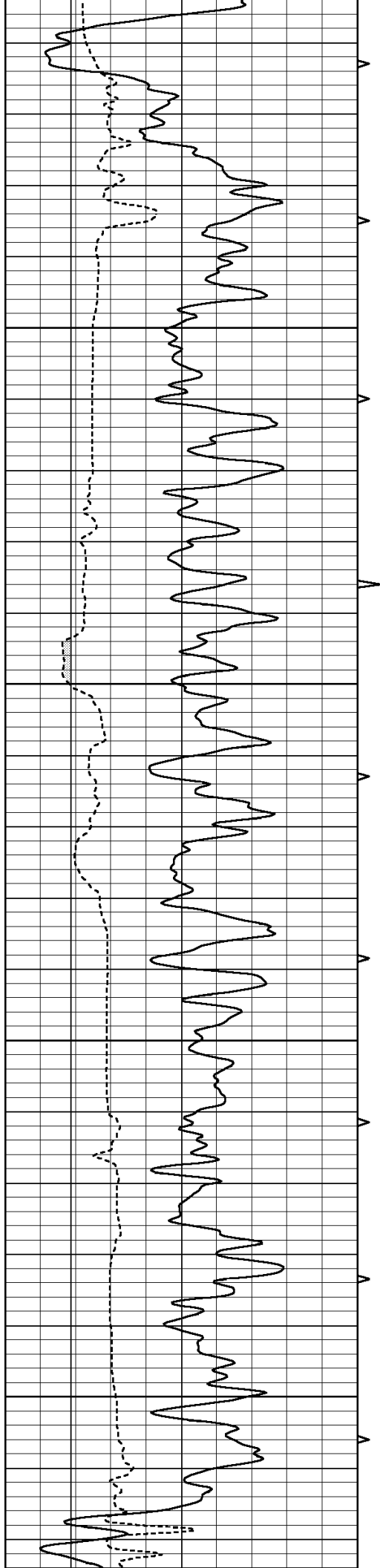
1200

1250

1300





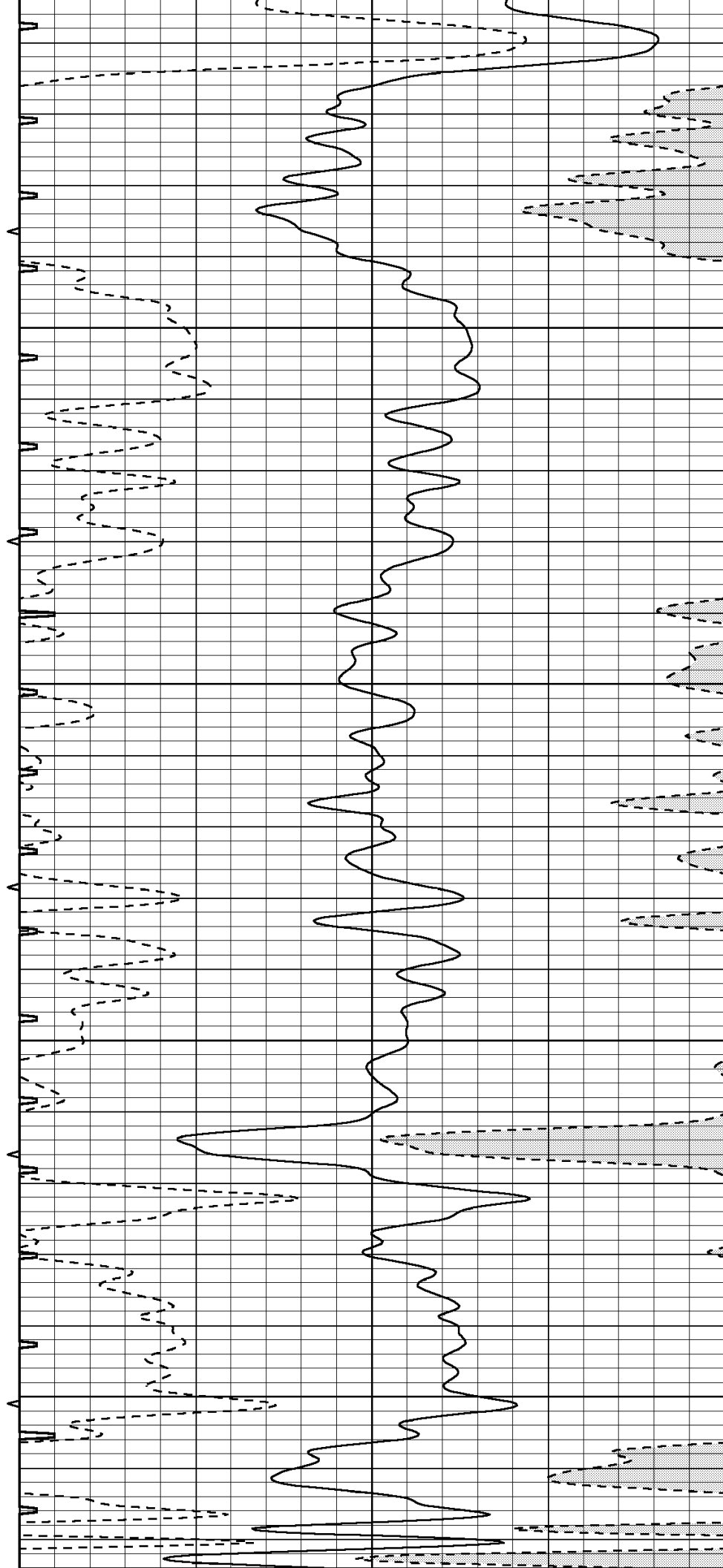


1600

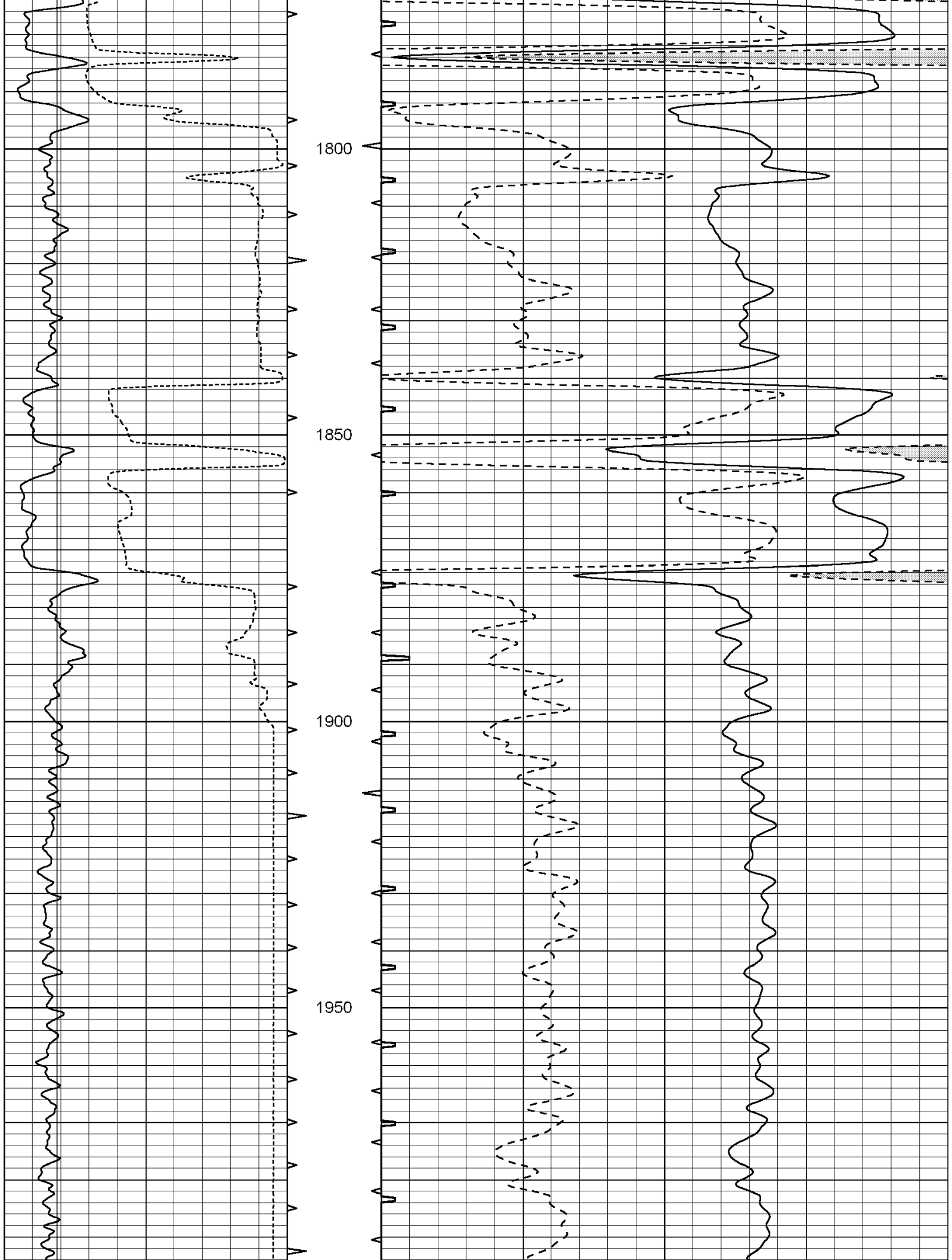
1650

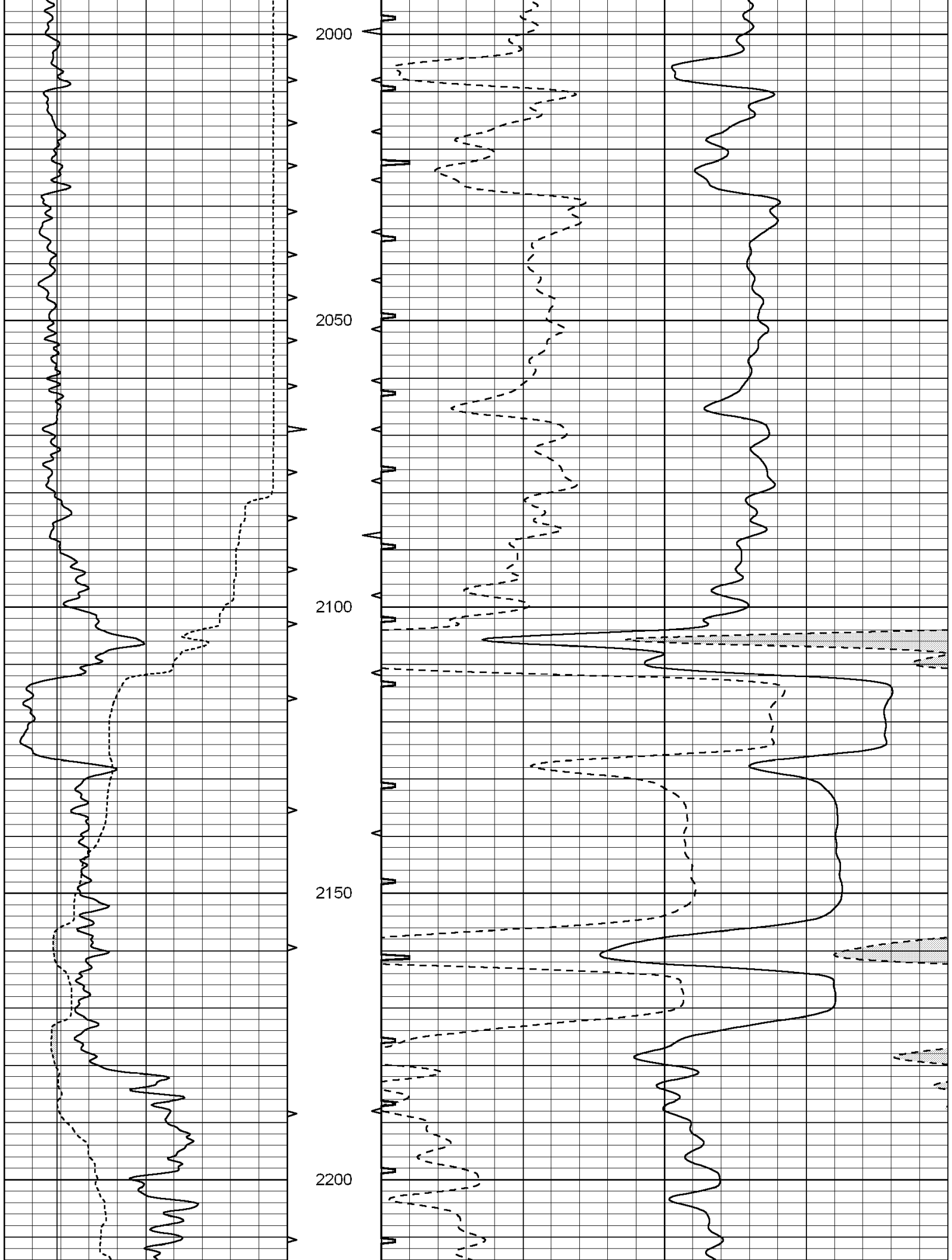
1700

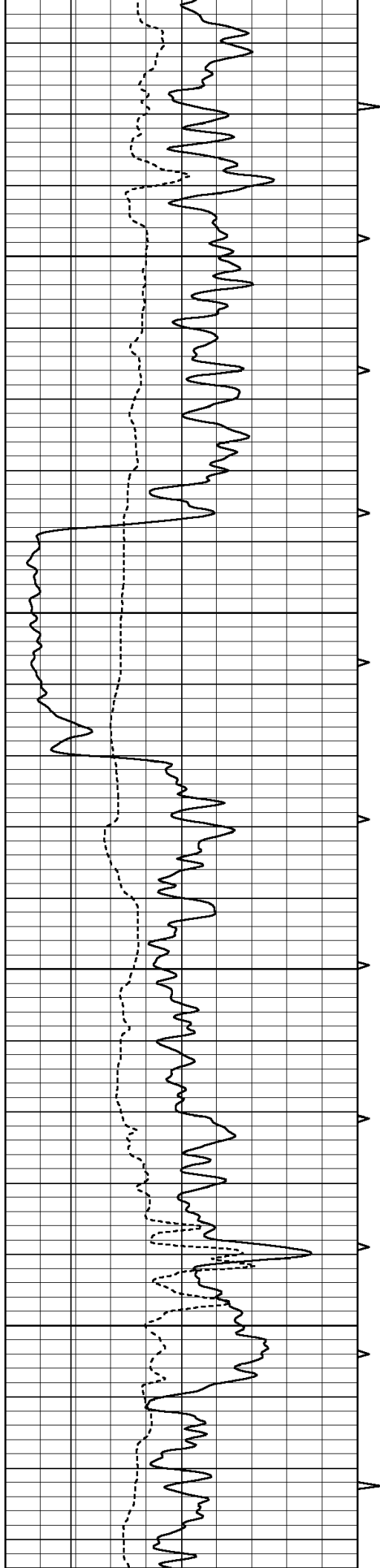
1750









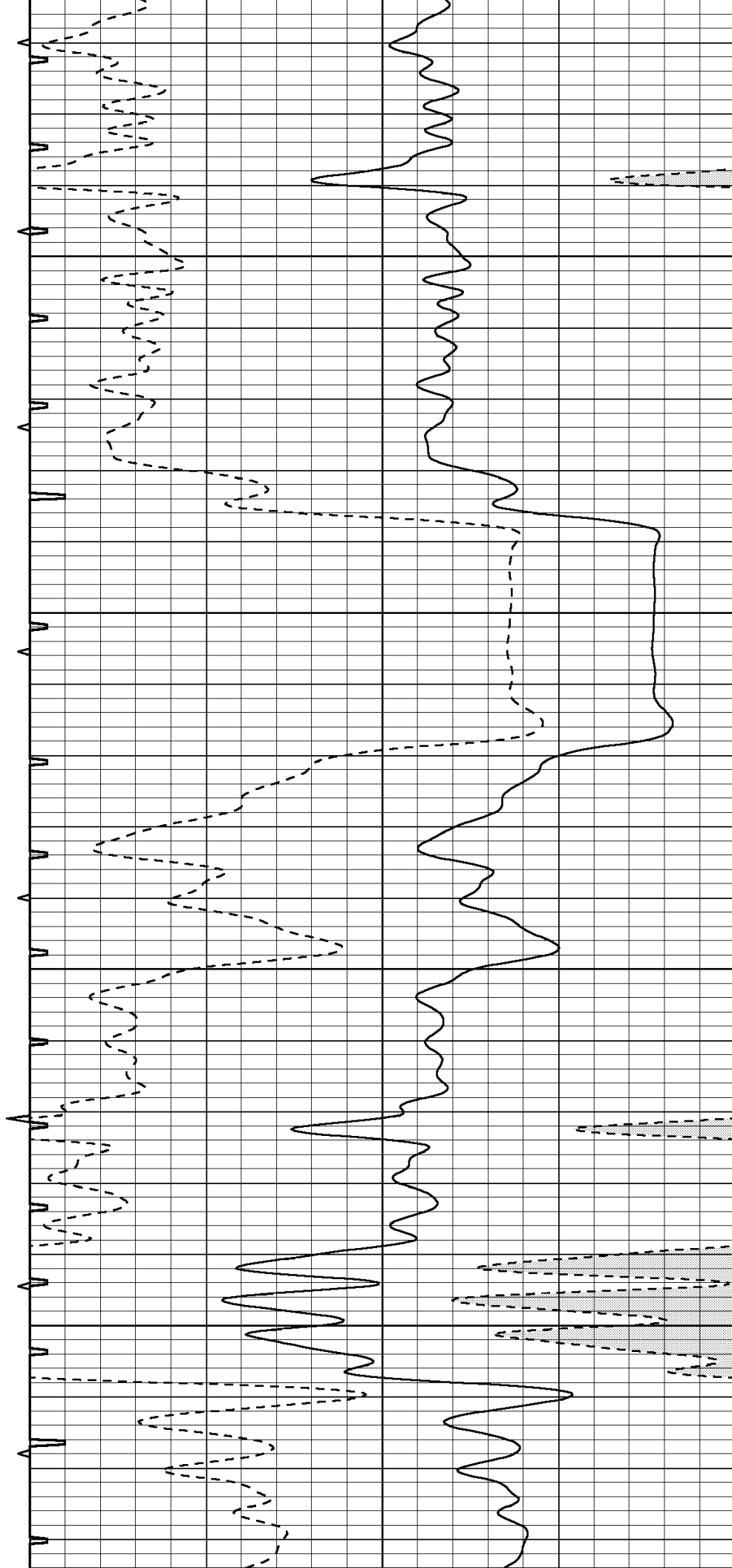


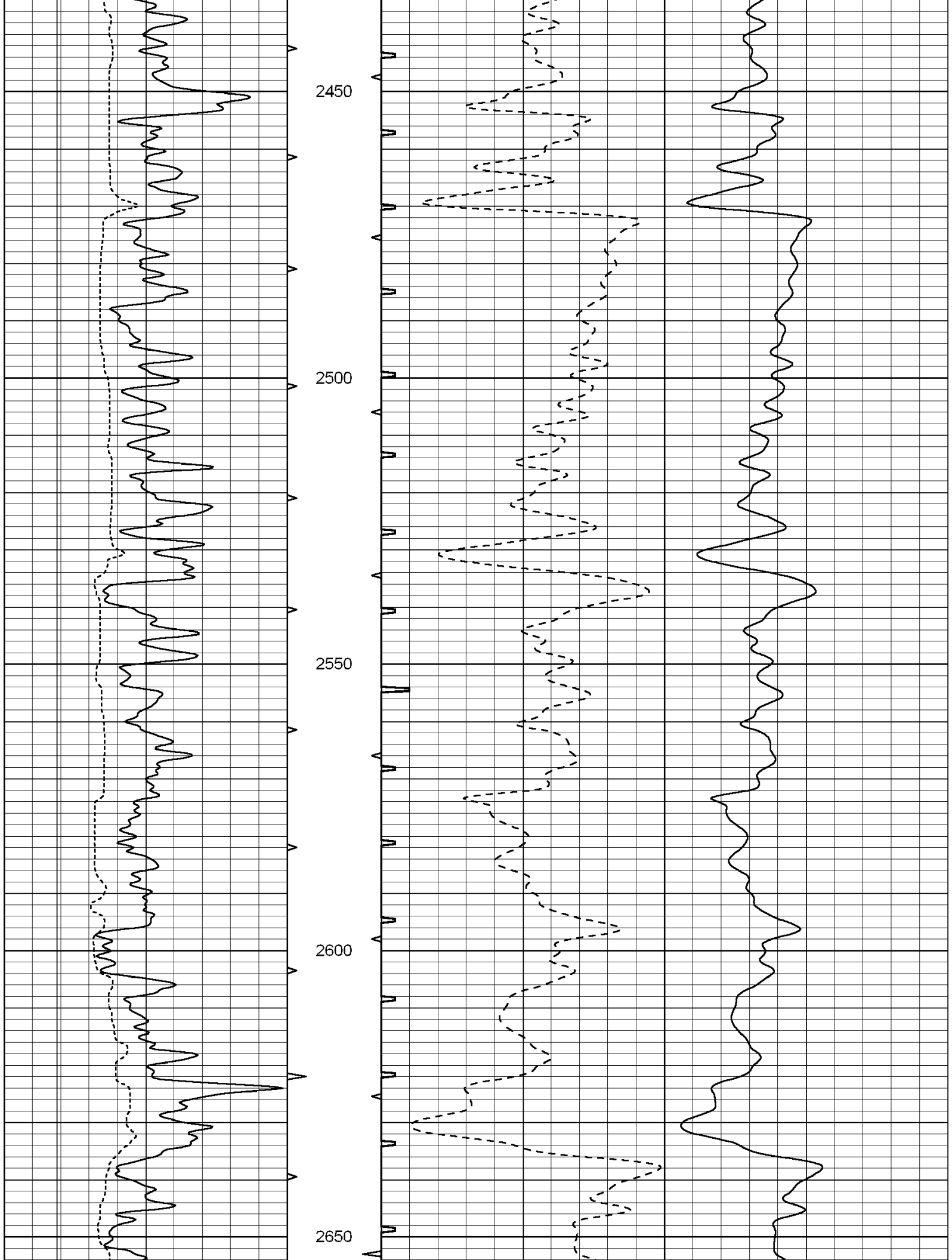
2250

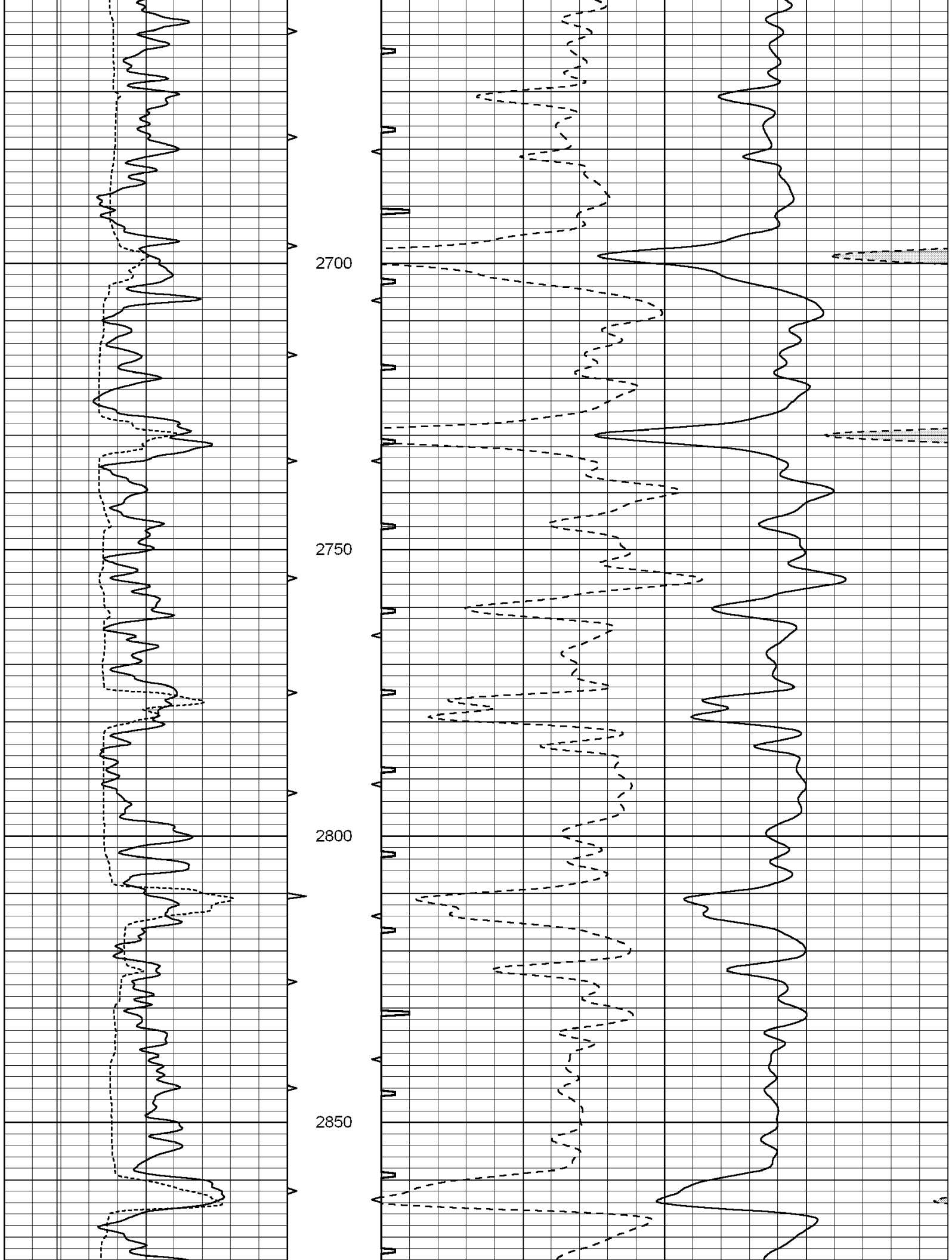
2300

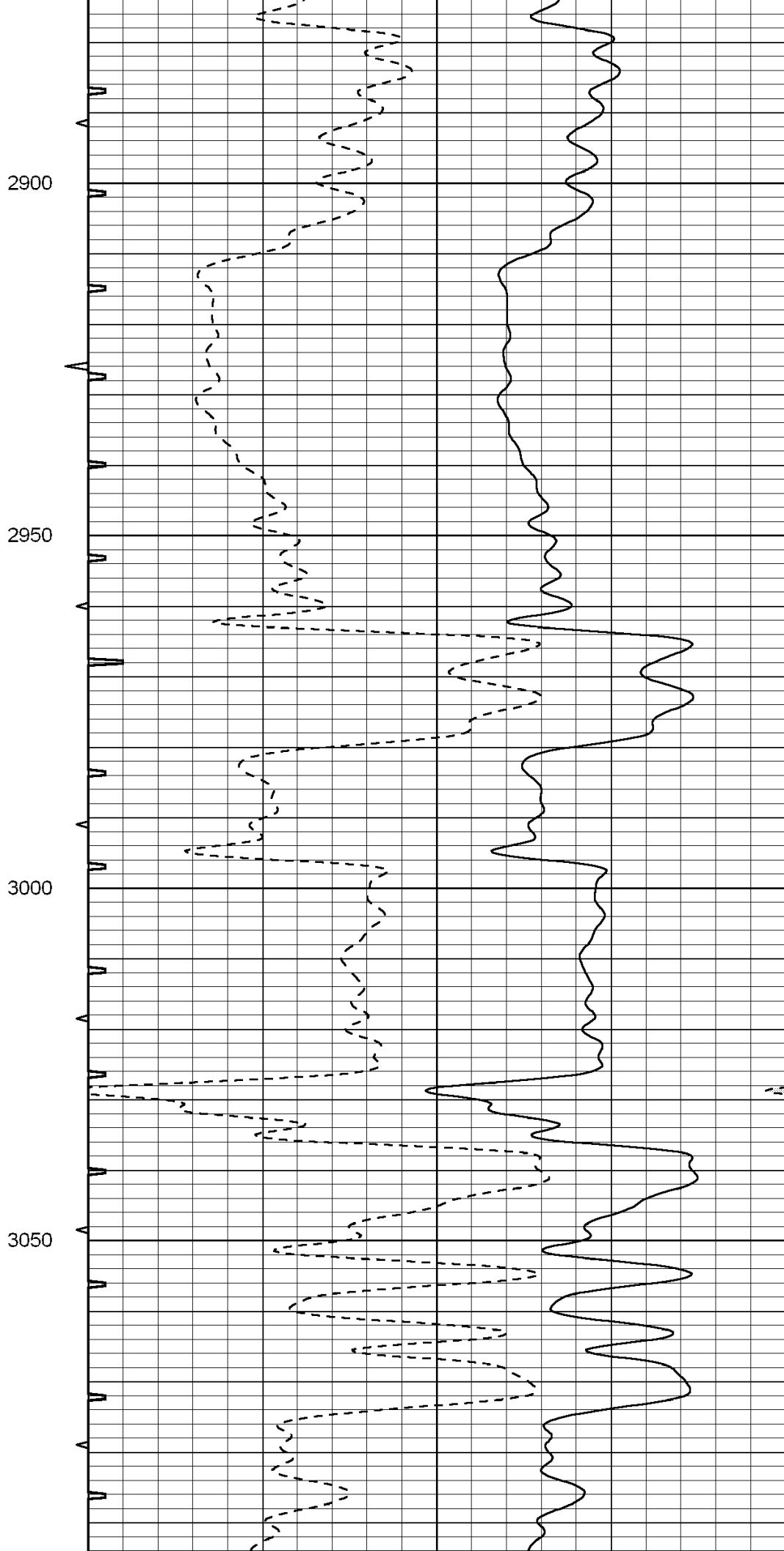
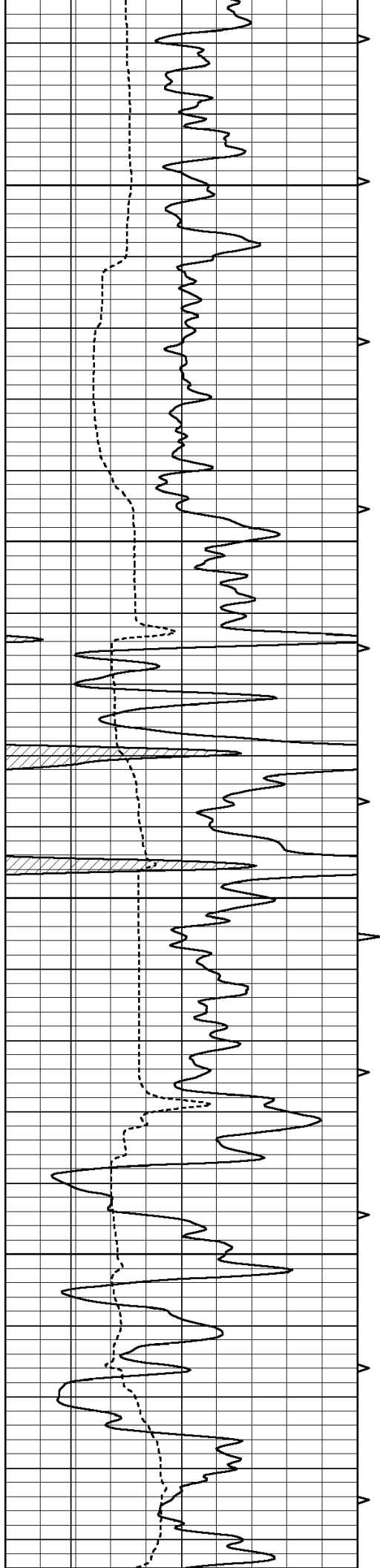
2350

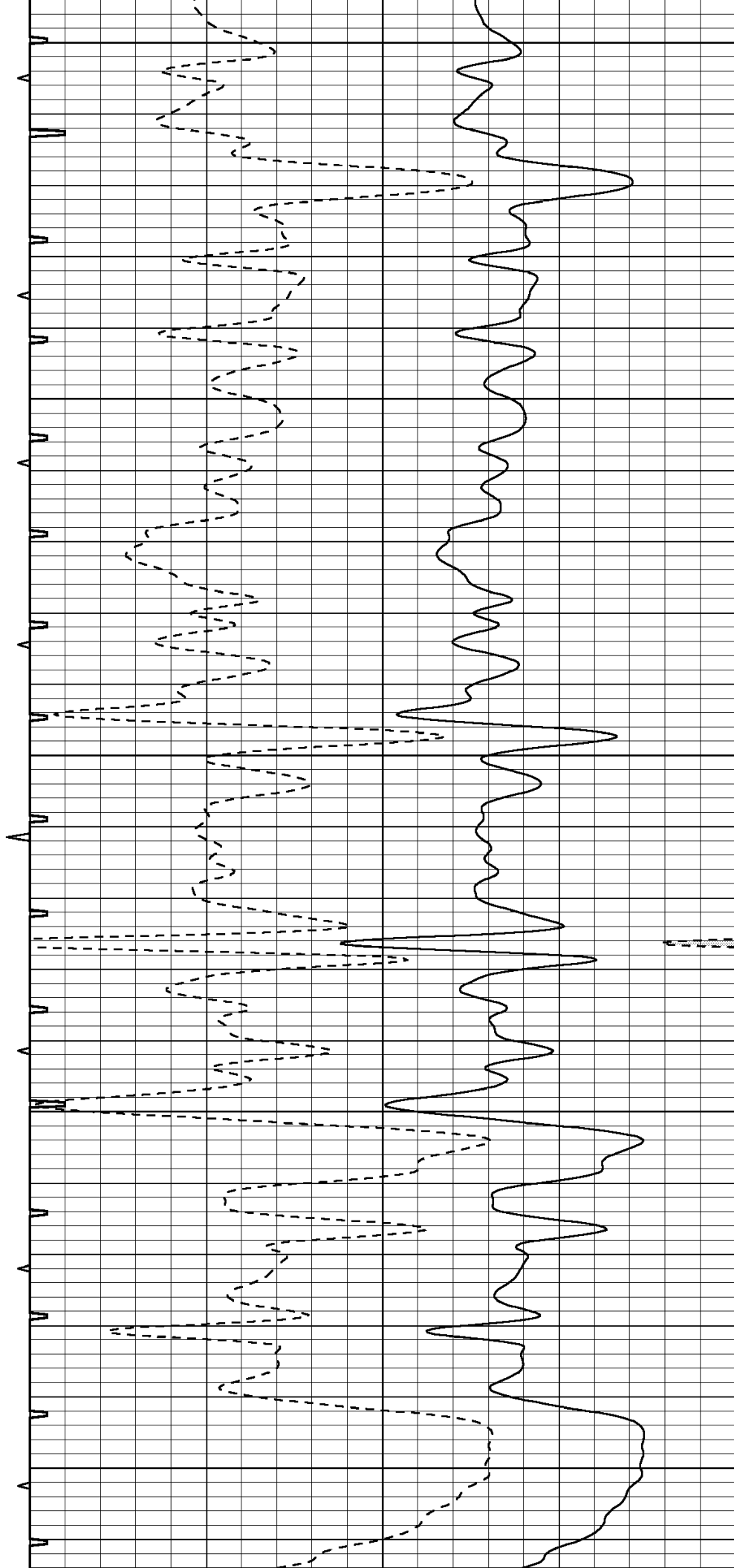
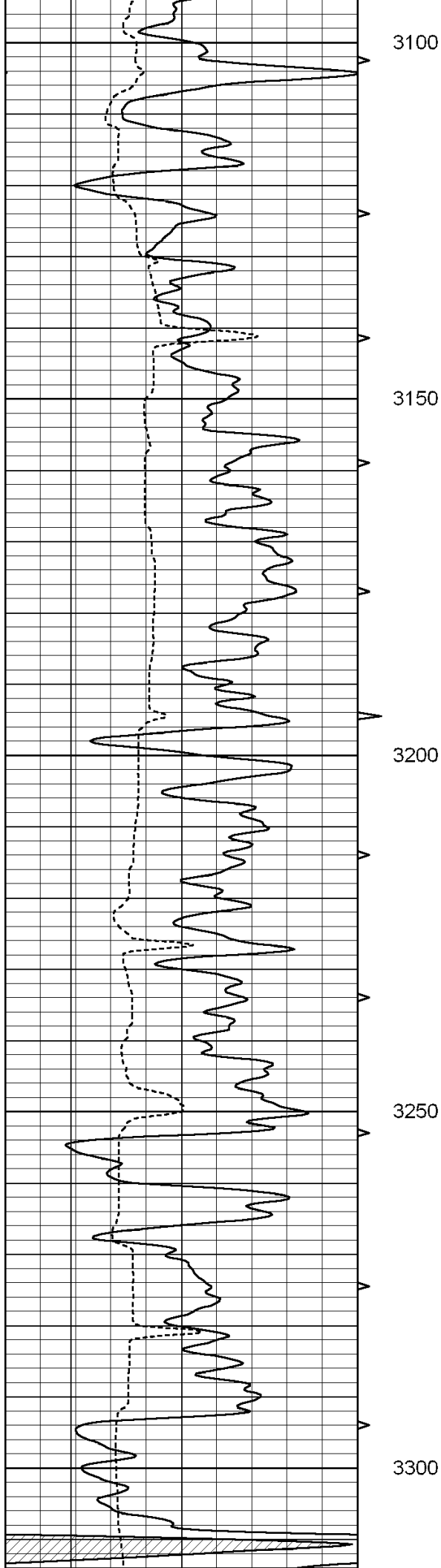
2400

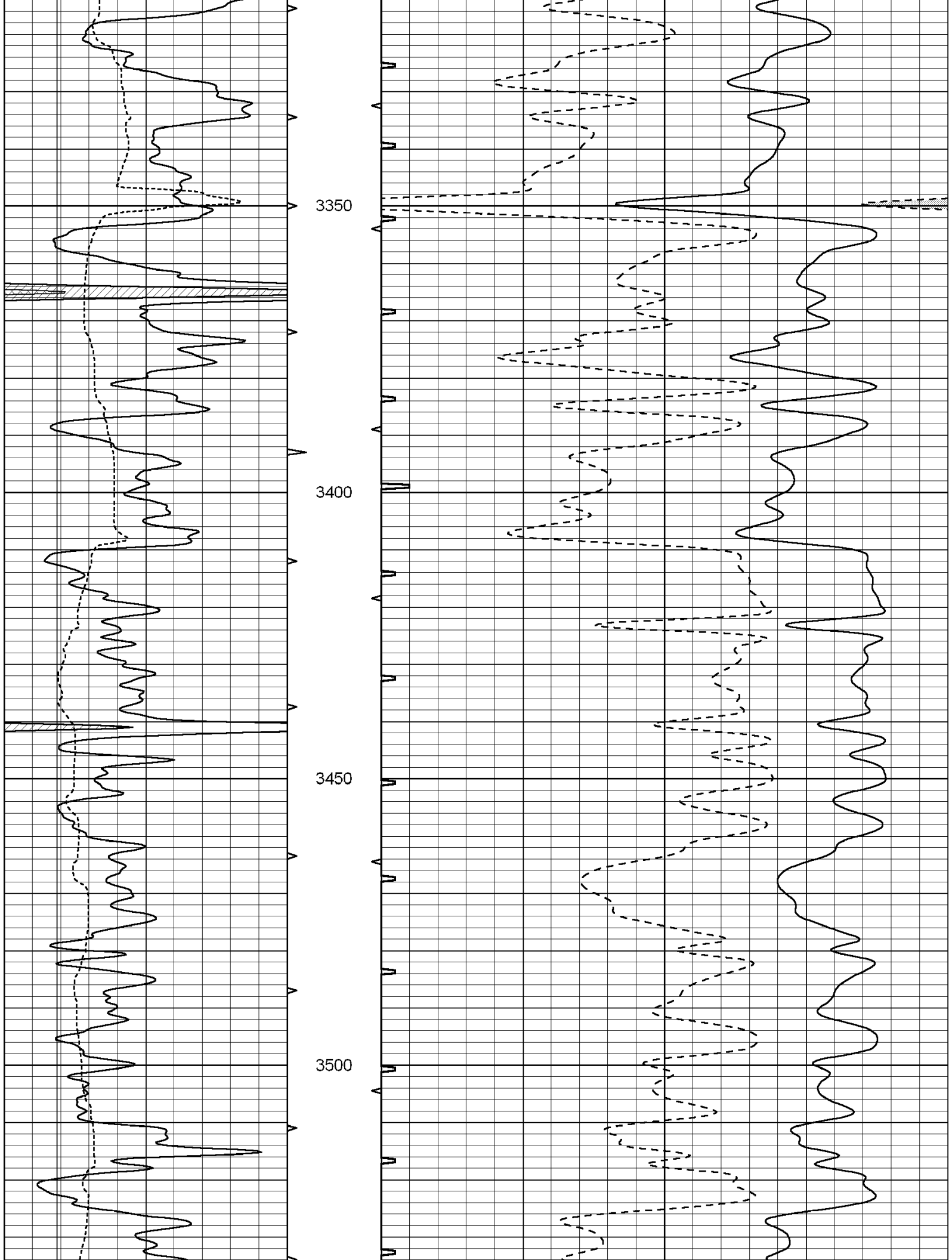




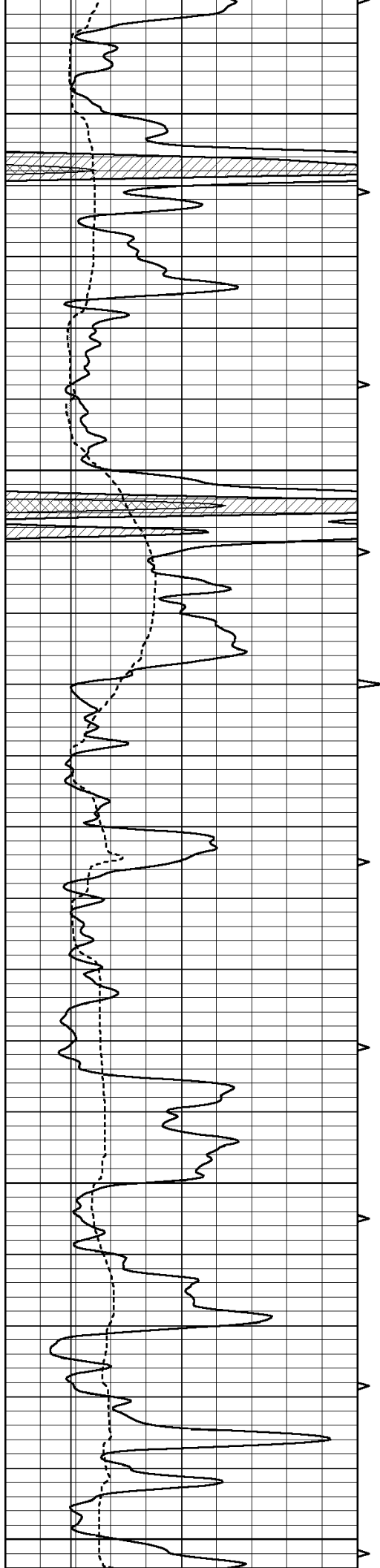












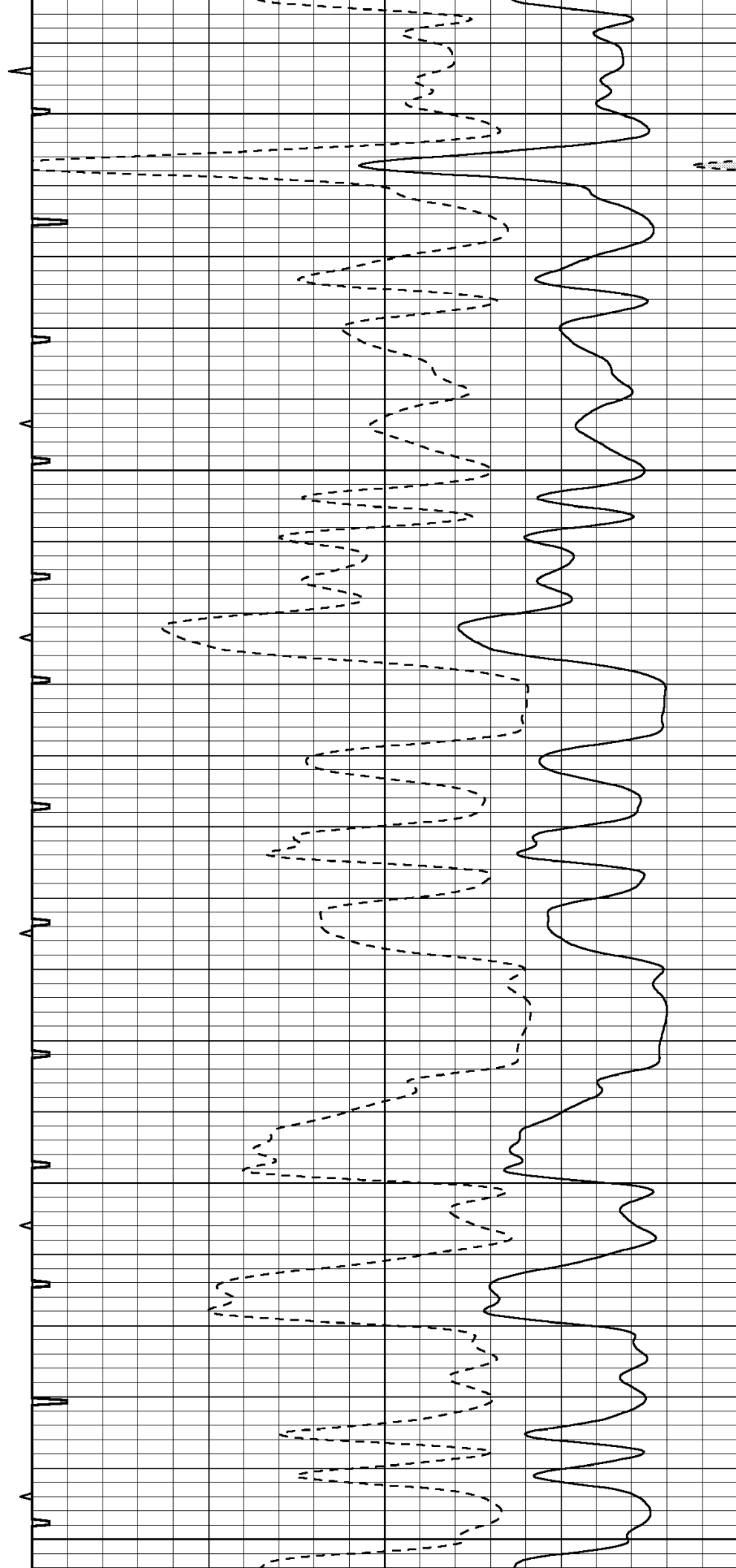
3550

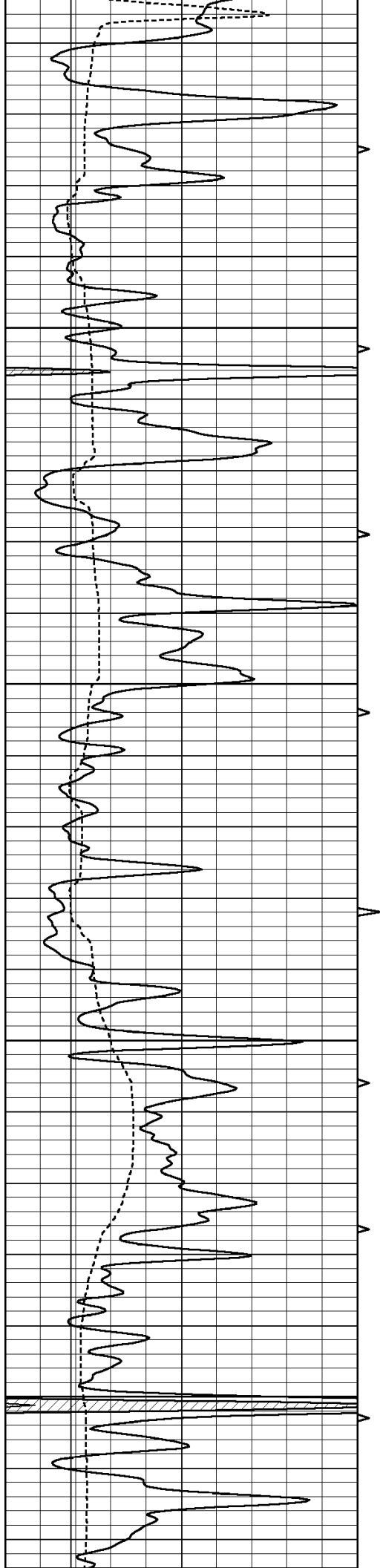
3600

3650

3700

3750



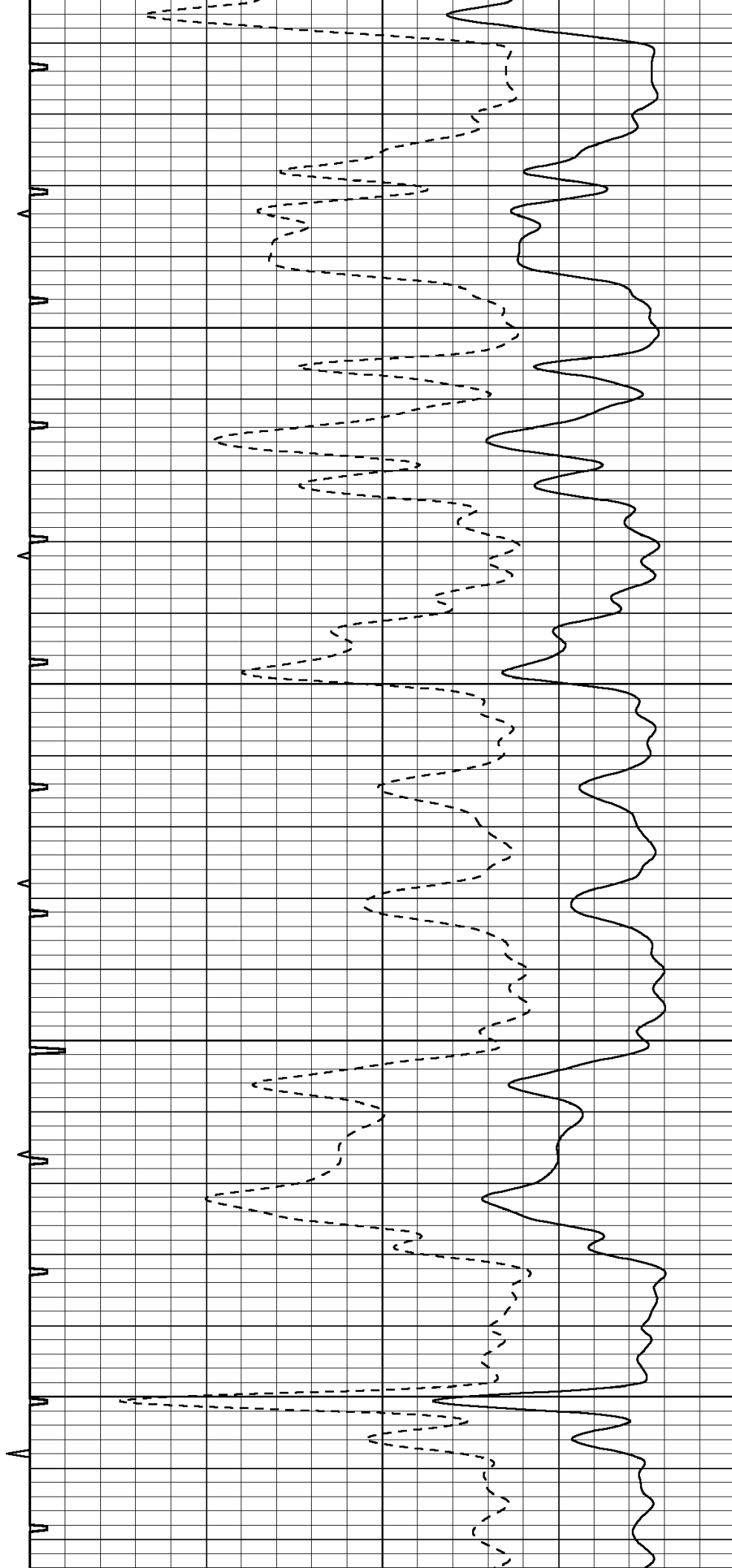


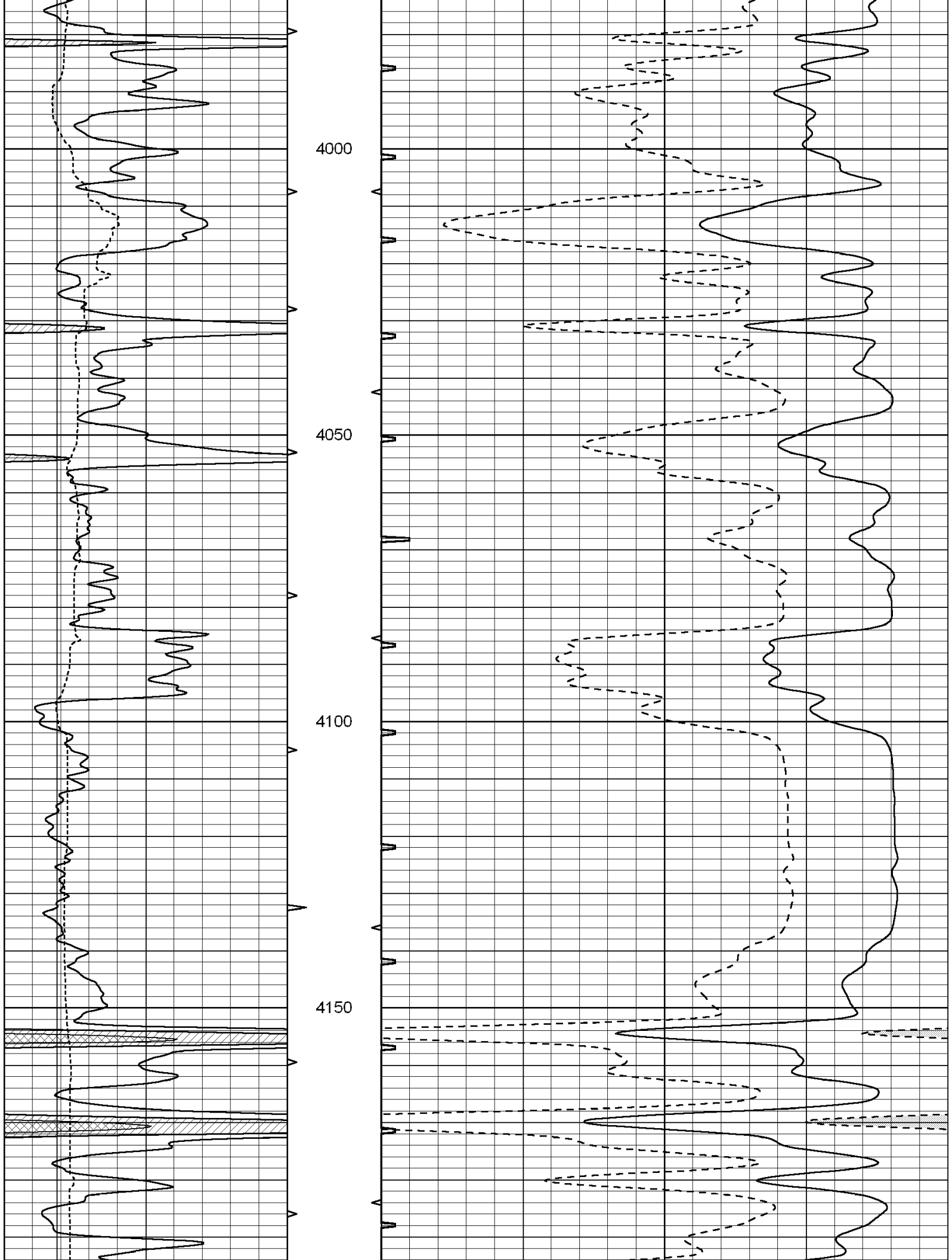
3800

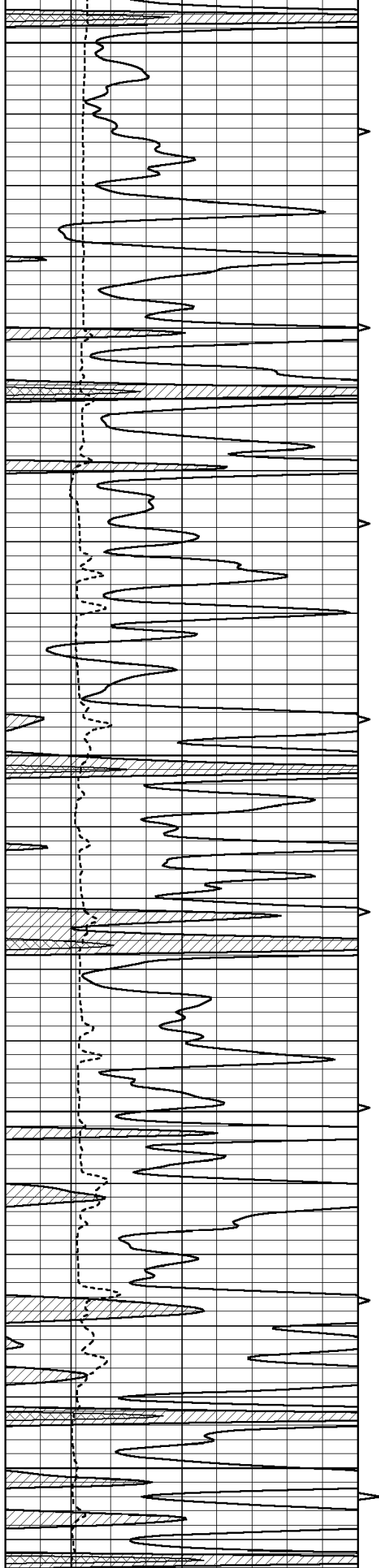
3850

3900

3950







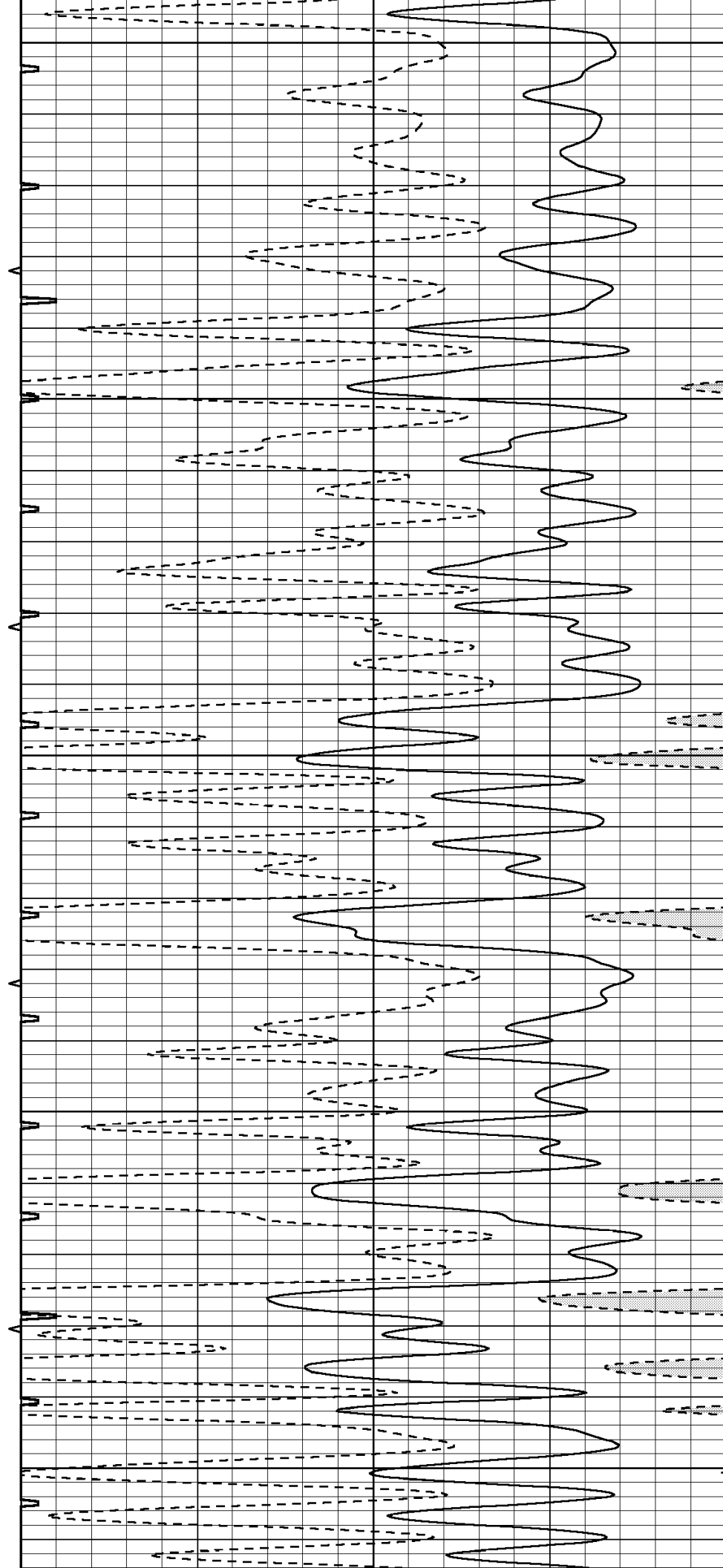
4200

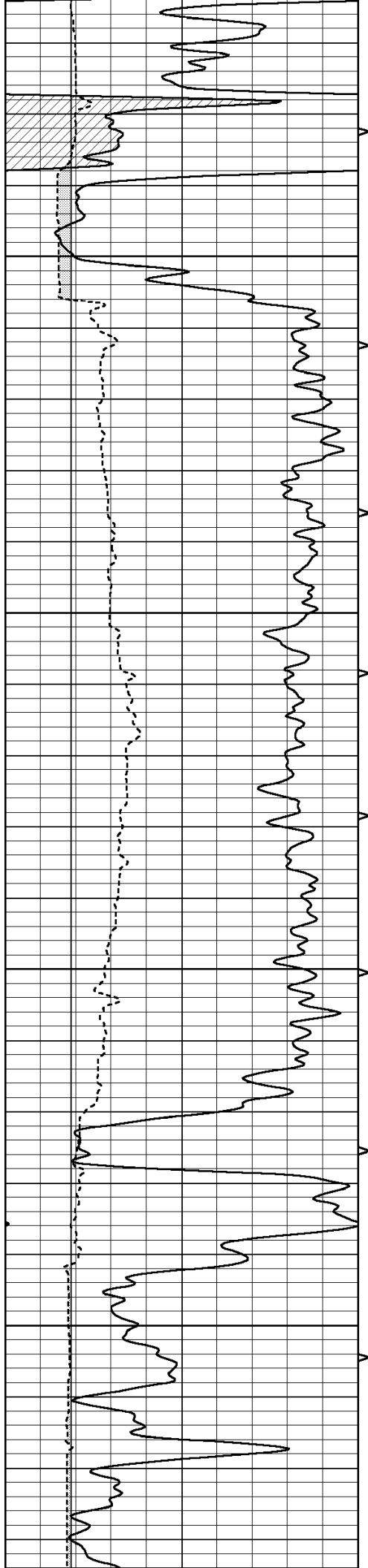
4250

4300

4350

4400



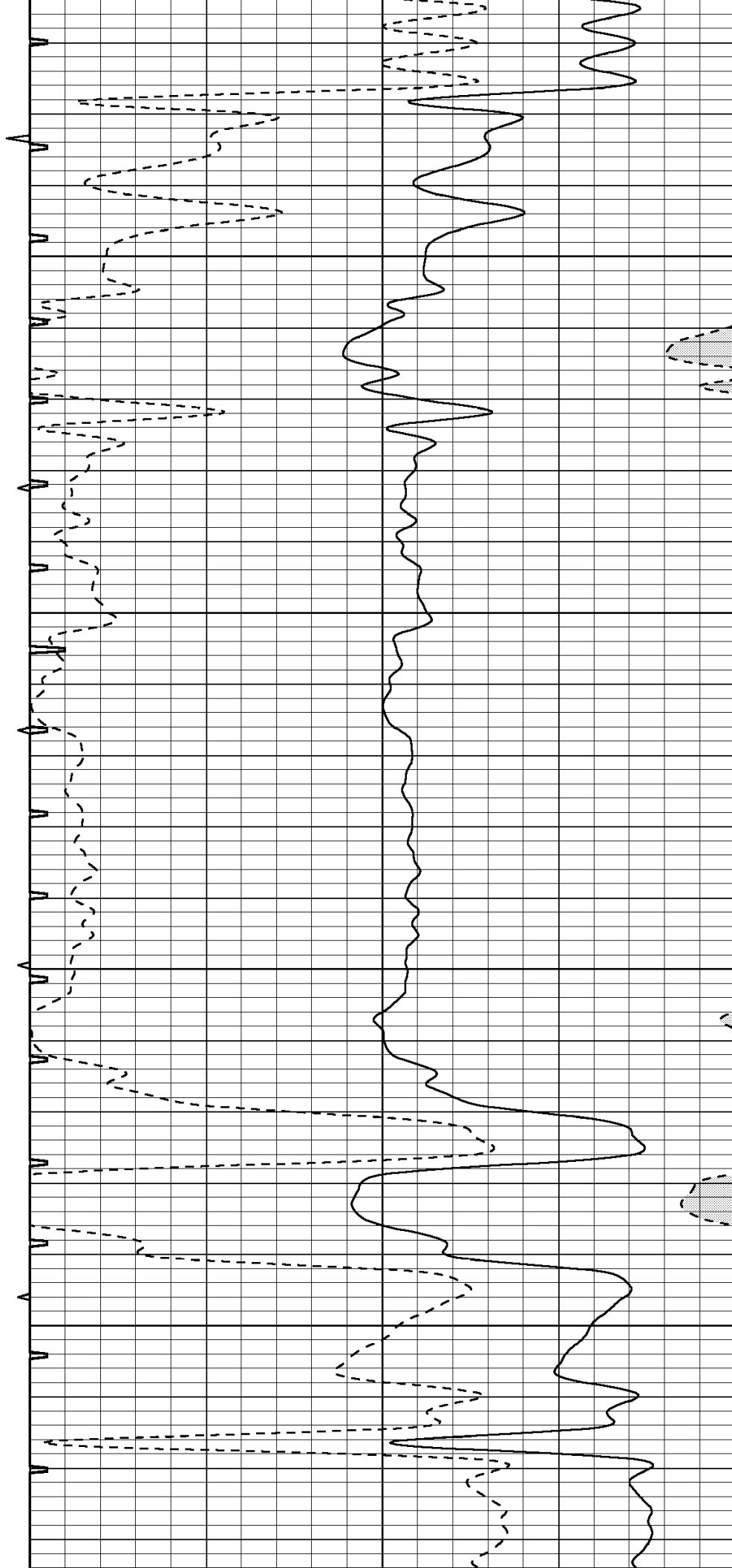


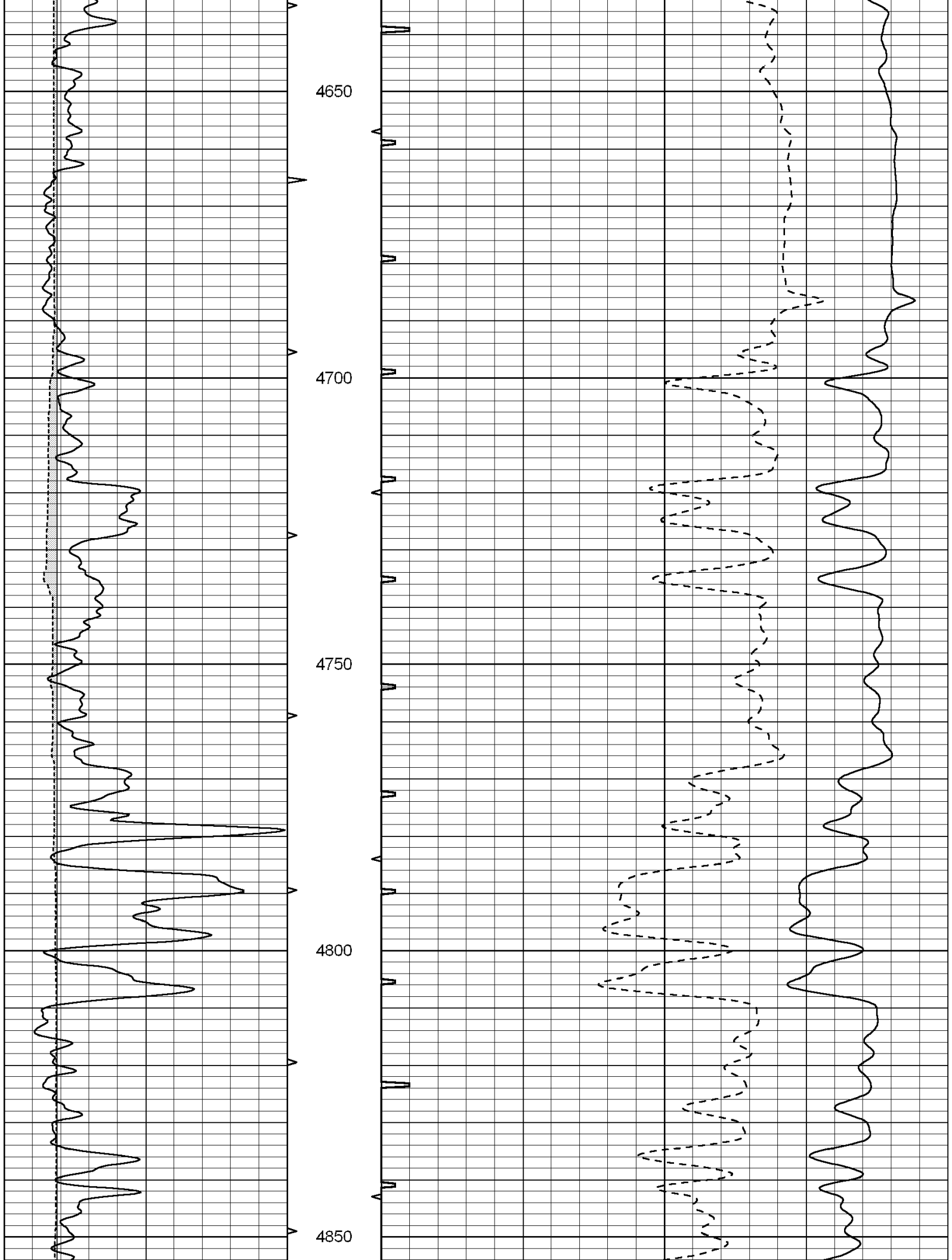
4450

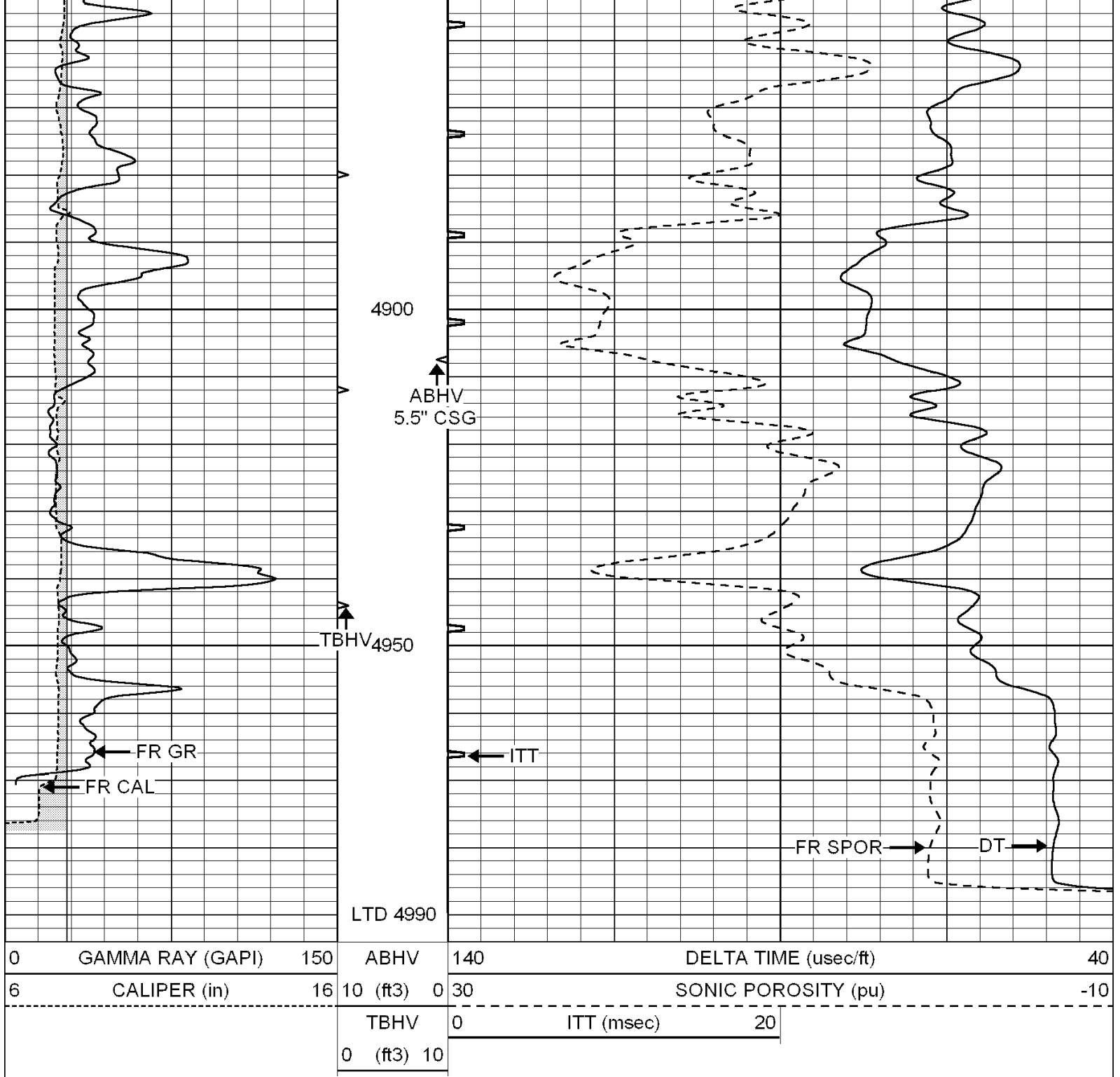
4500

4550

4600







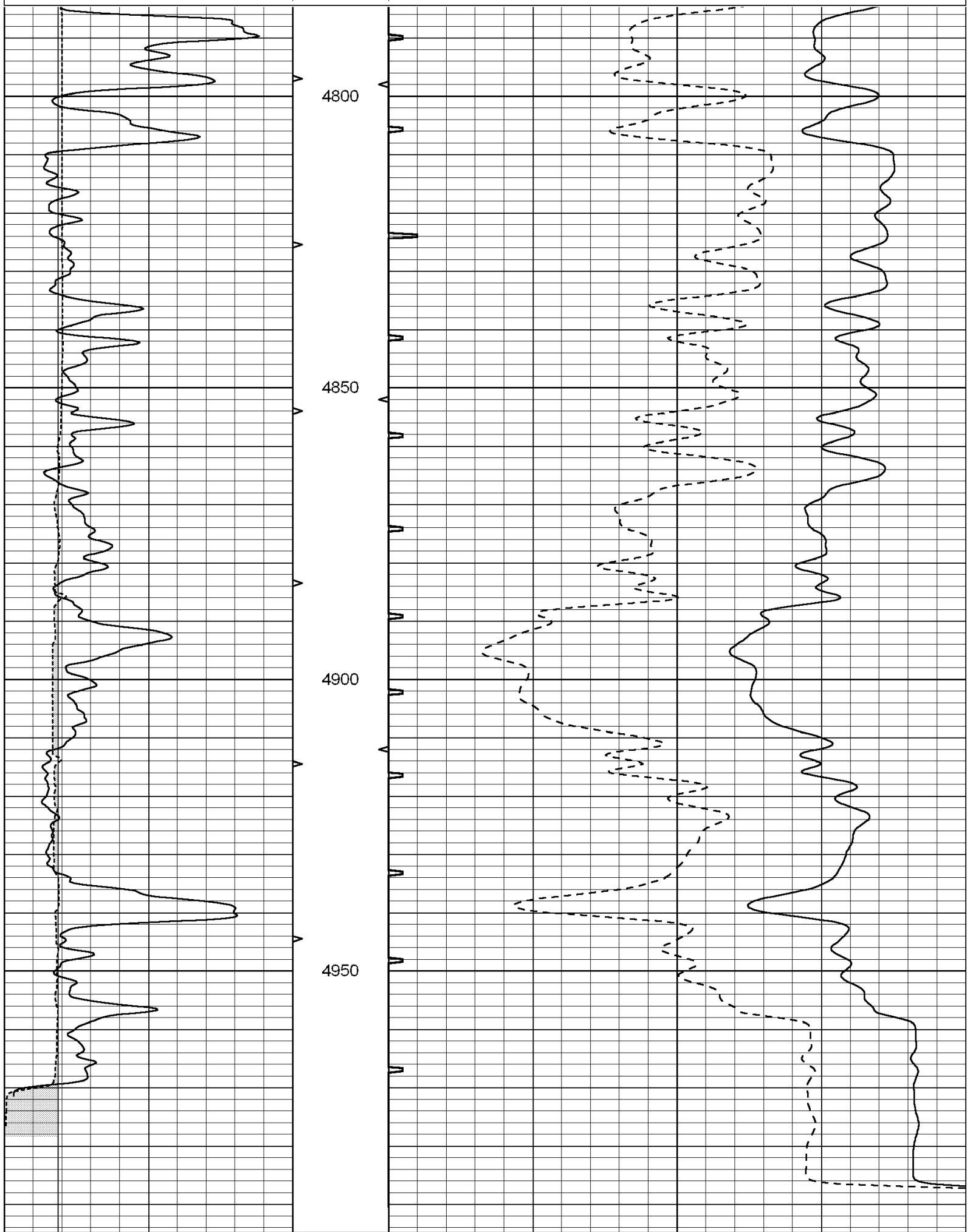
SUPERIOR  
Hays,  
Kansas

# REPEAT SECTION

Database File: 005122pe.db  
 Dataset Pathname: pass6.1  
 Presentation Format: \_slt  
 Dataset Creation: Sat May 01 01:34:08 2010 by Calc Open-Cased 090629  
 Charted by: Depth in Feet scaled 1:240

0	GAMMA RAY (GAPI)	150	ABHV	140	DELTA TIME (usec/ft)	40
6	CALIPER (in)	16	10 (ft3)	0	30	SONIC POROSITY (pu)
			TBHV	0	ITT (msec)	20

0 (ft3) 10



0 GAMMA RAY (GAPI) 150 ARHV 140 DELTA TIME (u sec/ft) 40



0	CALIBER (in)	16	TBHV	10	DELT TIME (msec)	10
6	CALIPER (in)	16	10 (ft3) 0	30	SONIC POROSITY (pu)	-10
			TBHV	0	ITT (msec)	20
			0 (ft3) 10			