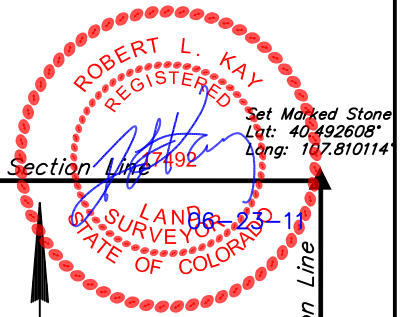


**QUICKSILVER RESOURCES, INC.**

**FIGURE #5**

LOCATION DRAWING FOR

**K-DIAMOND RANCH #32-10**  
**SECTION 10, T6N, R93W, 6th. P.M.**  
**2211' FNL 1700' FEL**



S89°59'21"E - 5278.61' (Meas.)

Set Marked Stone  
 Lat: 40.492611°  
 Long: 107.829086°

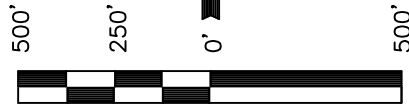
1/4 Section Line

1/16 Section Line

Section Line

Section Line 7492

LAND SURVEYOR  
 STATE OF COLORADO



SCALE  
 DATE: 06-10-11  
 DRAWN BY: K.O.

500'01'55"W - 2637.22' (Meas.)

1/16 Section Line

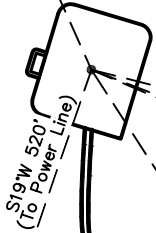
1/4 Section Line

10

**K-Diamond Ranch**

Water Well

N24°W 1425'  
 (To Water Well)



S19°W 520'  
 (To Power Line)

S67°E 14522'  
 (To Building)

S69°E 14716'  
 (To County Road #90)

S76°E 1752'  
 (To Property Line)

2006 UELS Alum. Cap.  
 Lat: 40.485372°  
 Long: 107.810119°

Existing 2-Track

Power Line

S33°E 2.0 Miles  
 (To Railroad)

Proposed Access Road

**PLANT COMMUNITY**

- DISTURBED GRASSLAND
- NATIVE GRASSLAND
- SHRUB LAND
- PLAINS RIPARIAN
- MOUNTAIN RIPARIAN
- FOREST LAND
- WETLANDS AQUATIC
- ALPINE
- OTHER (Describe): \_\_\_\_\_

**CURRENT LAND USE**

- CROP LAND:  IRRIGATED  DRY LAND  IMPROVED PASTURE  HAY MEADOW  CRP
- NON-CROP LAND:  RANGELAND  TIMBER  RECREATIONAL  OTHER (Describe) \_\_\_\_\_
- SUBDIVIDED:  INDUSTRIAL  COMMERCIAL  RESIDENTIAL \_\_\_\_\_

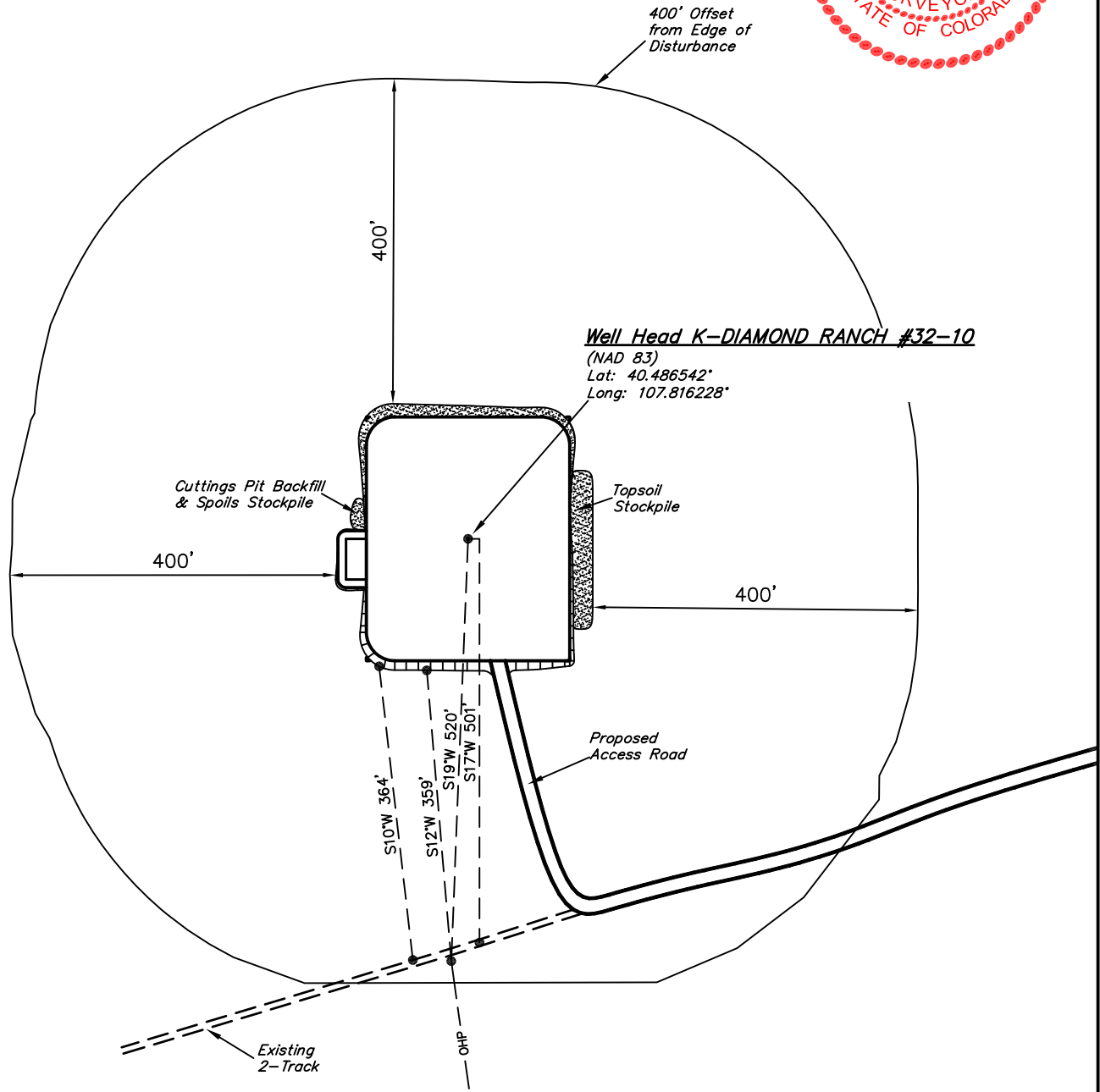
**FUTURE LAND USE**

- CROP LAND:  IRRIGATED  DRY LAND  IMPROVED PASTURE  HAY MEADOW  CRP
- NON-CROP LAND:  RANGELAND  TIMBER  RECREATIONAL  OTHER (Describe) \_\_\_\_\_
- SUBDIVIDED:  INDUSTRIAL  COMMERCIAL  RESIDENTIAL \_\_\_\_\_

QUICKSILVER RESOURCES, INC.

ADDENDUM TO LEGAL PLAT FOR  
K-DIAMOND RANCH #32-10  
SECTION 10, T6N, R93W, 6th. P.M.  
2211' FNL 1700' FEL

SCALE: 1" = 200'  
DATE: 06-10-11  
DRAWN BY: K.O.



Well Head K-DIAMOND RANCH #32-10  
(NAD 83)  
Lat: 40.486542°  
Long: 107.816228°