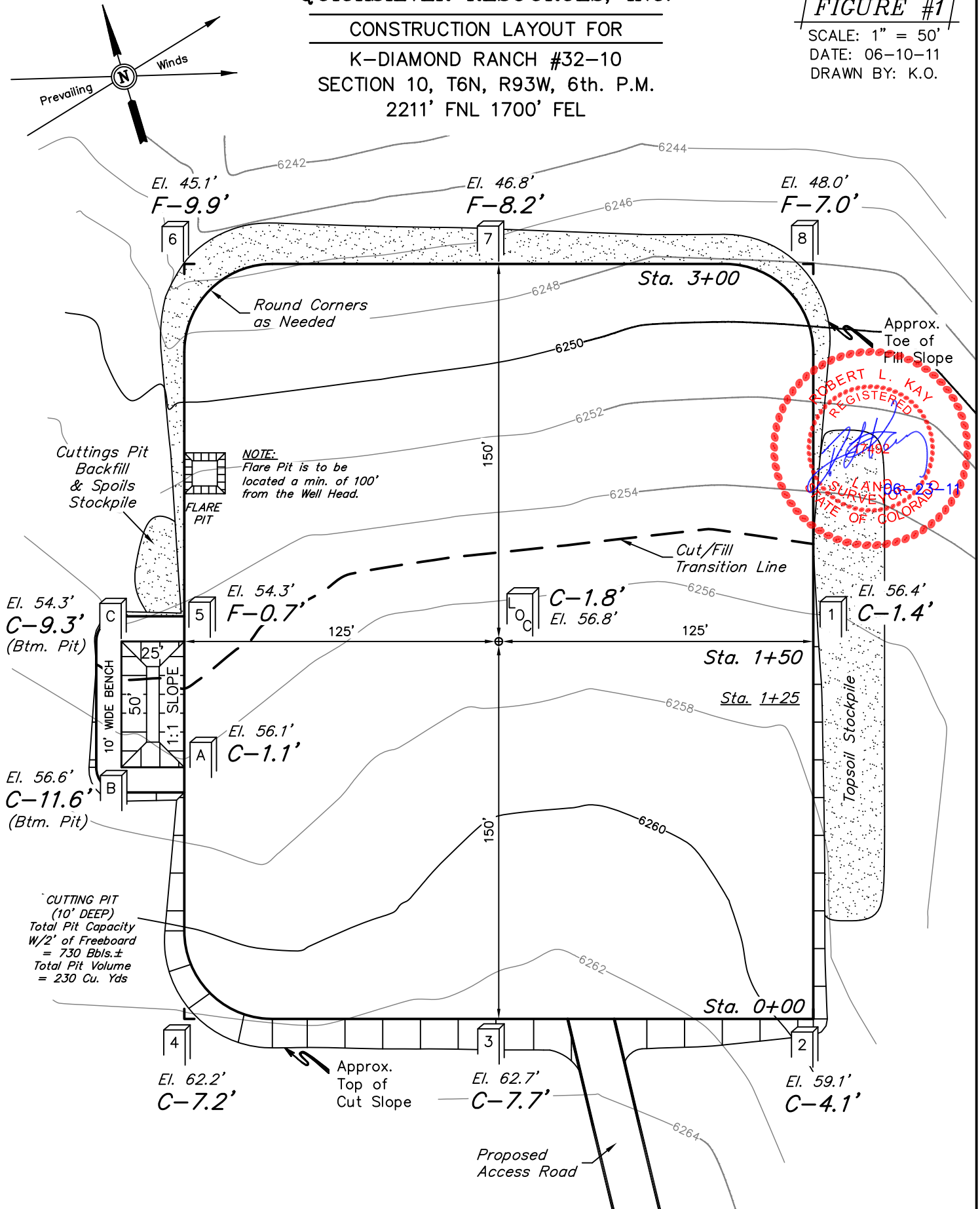


QUICKSILVER RESOURCES, INC.

CONSTRUCTION LAYOUT FOR
K-DIAMOND RANCH #32-10
SECTION 10, T6N, R93W, 6th. P.M.
2211' FNL 1700' FEL

FIGURE #1

SCALE: 1" = 50'
DATE: 06-10-11
DRAWN BY: K.O.



Elev. Ungraded Ground At Loc. Stake = 6256.8'
FINISHED GRADE ELEV. AT LOC. STAKE = 6255.0'

UINTAH ENGINEERING & LAND SURVEYING
85 So. 200 East * Vernal, Utah 84078 * (435) 789-1017

QUICKSILVER RESOURCES, INC.

CONSTRUCTION LAYOUT CROSS SECTIONS FOR

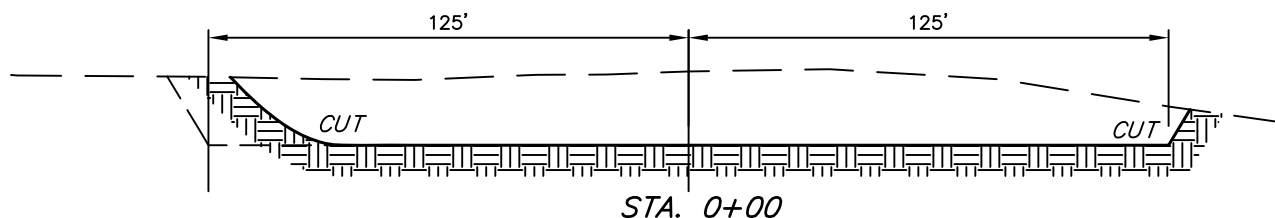
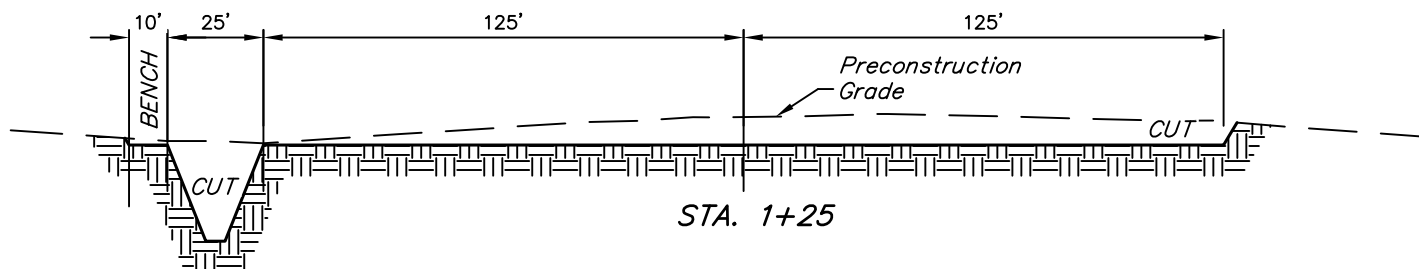
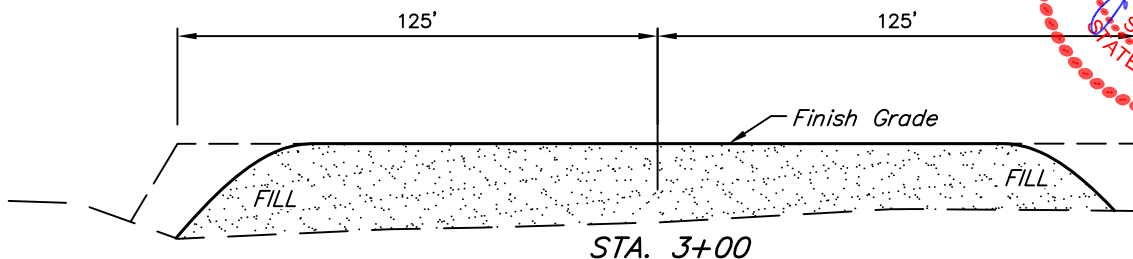
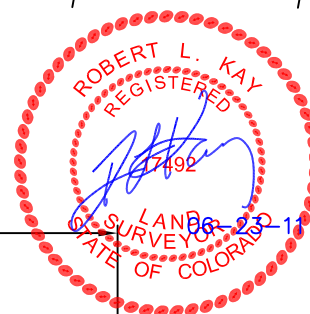
K-DIAMOND RANCH #32-10

SECTION 10, T6N, R93W, 6th. P.M.

2211' FNL 1700' FEL

FIGURE #2

1" = 20'
X-Section
Scale
1" = 50'
DATE: 06-10-11
DRAWN BY: K.O.



NOTE:

Topsoil should not be Stripped Below Finished Grade on Substructure Area.

APPROXIMATE ACREAGES

WELL SITE DISTURBANCE = ± 2.092 ACRES
ACCESS ROAD DISTURBANCE = ± 16.019 ACRES
TOTAL = ± 18.111 ACRES

* NOTE:
FILL QUANTITY INCLUDES 5% FOR COMPACTION

APPROXIMATE YARDAGES

(6") Topsoil Stripping = 1,630 Cu. Yds.
Remaining Location = 5,710 Cu. Yds.
TOTAL CUT = 7,340 CU.YDS.
FILL = 5,590 CU.YDS.

EXCESS MATERIAL = 1,750 Cu. Yds.
Topsoil & Pit Backfill (1/2 Pit Vol.) = 1,750 Cu. Yds.
EXCESS UNBALANCE (After Interim Rehabilitation) = 0 Cu. Yds.

UINTAH ENGINEERING & LAND SURVEYING
85 So. 200 East * Vernal, Utah 84078 * (435) 789-1017

QUICKSILVER RESOURCES, INC.

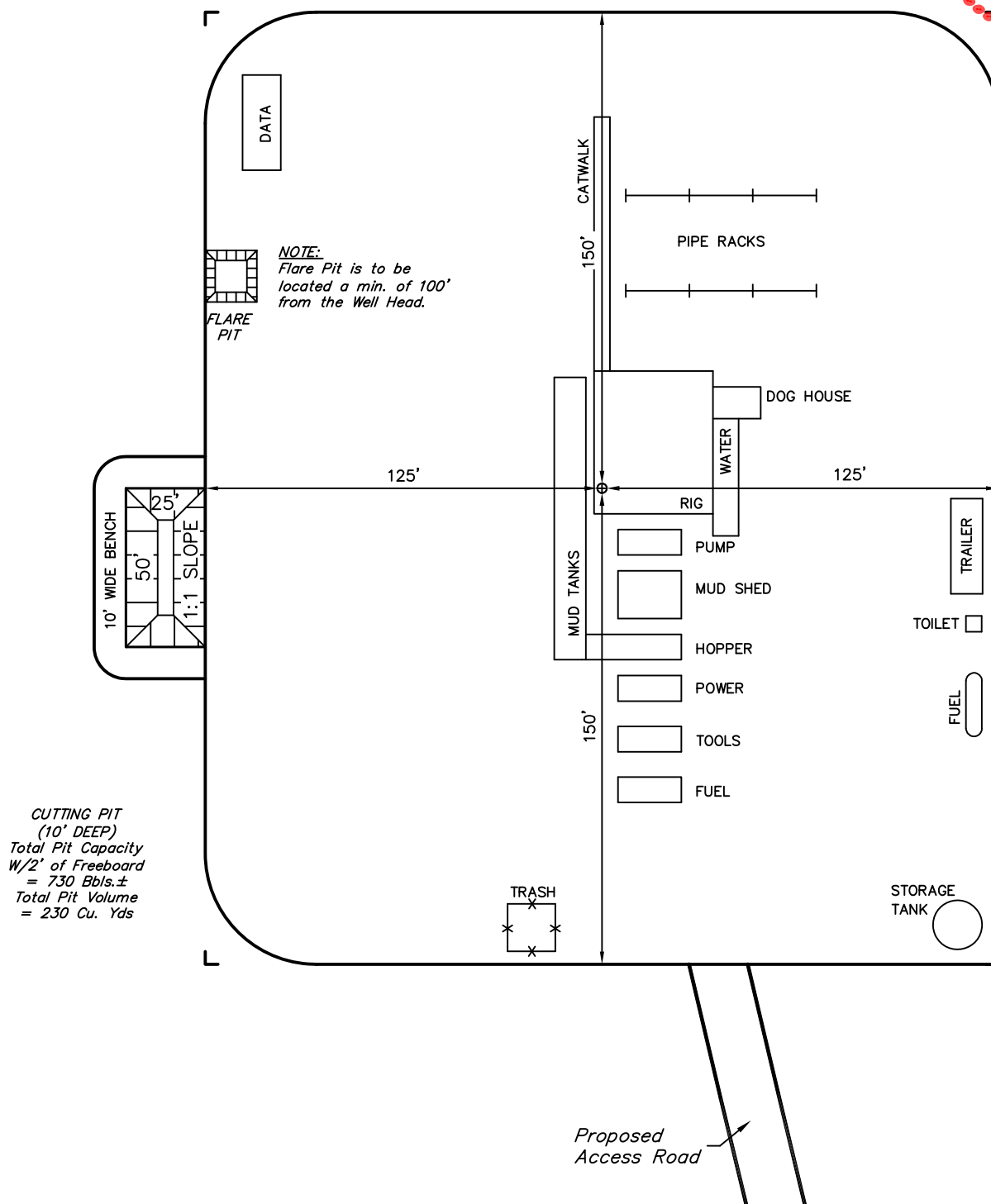
TYPICAL RIG LAYOUT FOR
K-DIAMOND RANCH #32-10
SECTION 10, T6N, R93W, 6th. P.M.
2211' FNL 1700' FEL

FIGURE #3

SCALE: 1" = 50'

DATE: 06-10-11

DRAWN BY: K.O.



UINTAH ENGINEERING & LAND SURVEYING

85 So. 200 East * Vernal, Utah 84078 * (435) 789-1017

QUICKSILVER RESOURCES, INC.

RECLAMATION DIAGRAM FOR

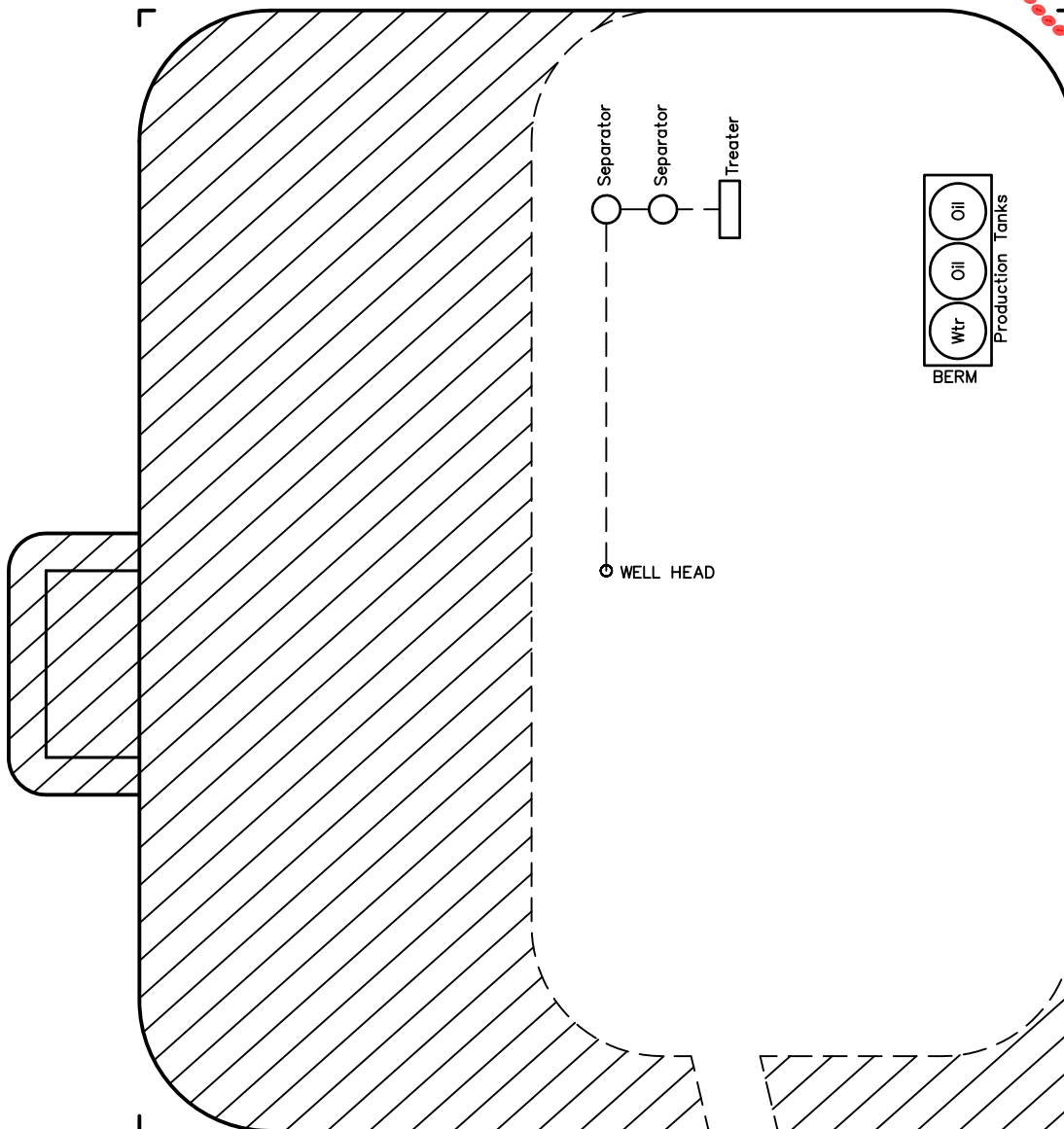
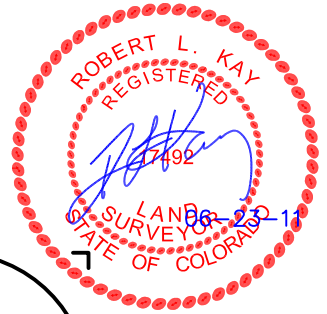
K-DIAMOND RANCH #32-10
SECTION 10, T6N, R93W, 6th. P.M.
2211' FNL 1700' FEL

FIGURE #4

SCALE: 1" = 50'

DATE: 06-10-11

DRAWN BY: K.O.



APPROXIMATE ACREAGES
UN-RECLAIMED = ± 0.787 ACRES



RECLAIMED AREA

UINTAH ENGINEERING & LAND SURVEYING

85 So. 200 East * Vernal, Utah 84078 * (435) 789-1017