

LEGEND:

PROPOSED LOCATION

QUICKSILVER RESOURCES, INC.

K-DIAMOND RANCH #32-10
SECTION 10, T6N, R93W, 6th P.M.
2211' FNL 1700' FEL



Uintah Engineering & Land Surveying
85 South 200 East Vernal, Utah 84078
(435) 789-1017 * FAX (435) 789-1813

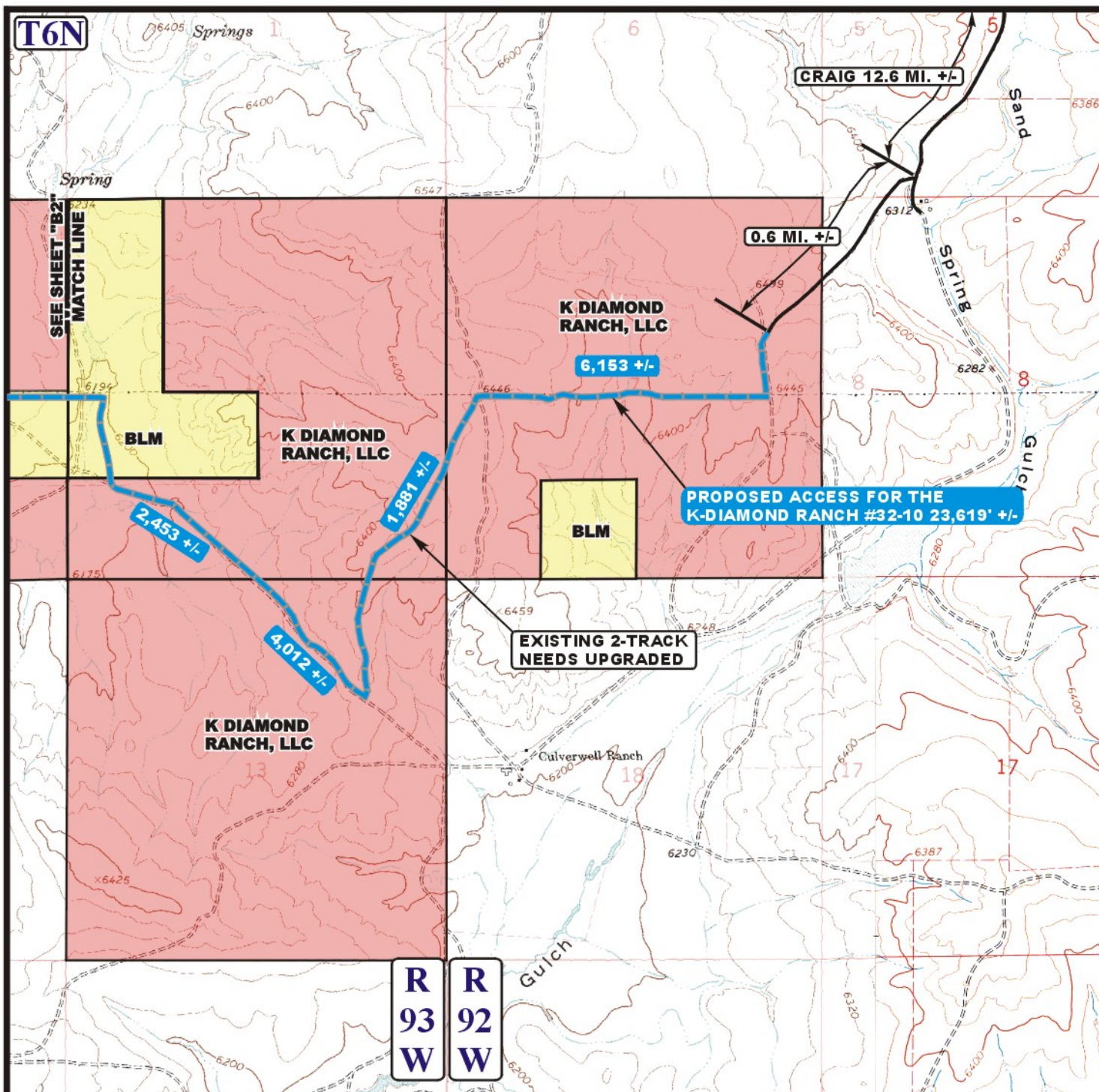


ACCESS ROAD
MAP

05 28 11
MONTH DAY YEAR

SCALE: 1:100,000 **DRAWN BY: S.F.** **REVISED: 00-00-00**





APPROXIMATE DISTANCE ON K DIAMOND RANCH, LLC LANDS = 29,272' +/-

APPROXIMATE DISTANCE ON BLM LANDS = 9,754' +/-

APPROXIMATE TOTAL DISTANCE = 39,046' +/-

LEGEND:

- EXISTING ROAD
- - - PROPOSED ACCESS ROAD
- * * * EXISTING FENCE
- I** INSTALL CATTLE GUARD



Utah Engineering & Land Surveying
85 South 200 East Vernal, Utah 84078
(435) 789-1017 * FAX (435) 789-1813



QUICKSILVER RESOURCES, INC.

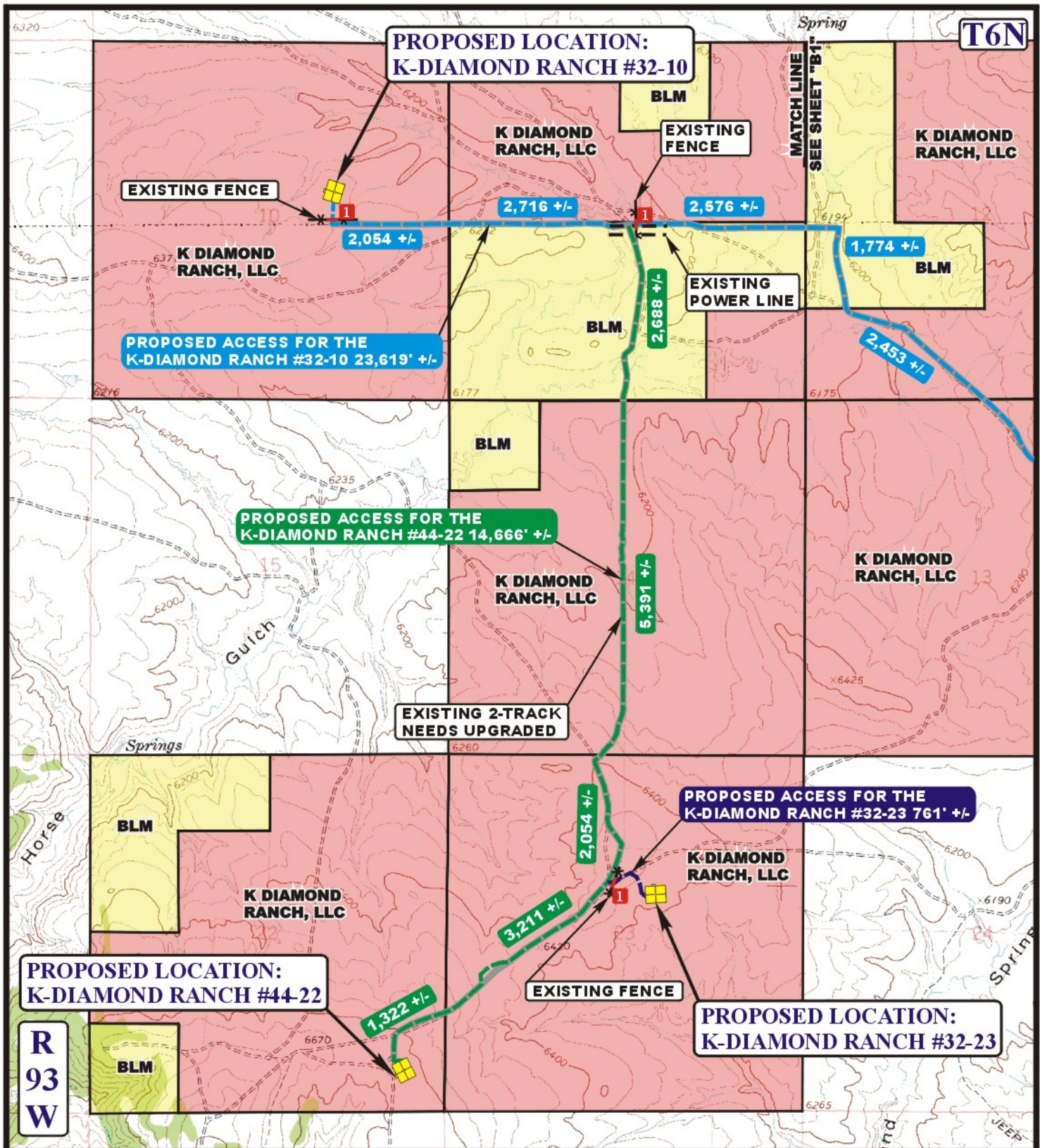
K-DIAMOND RANCH #32-23, #44-22 & #32-10
SECTIONS 10, 22 & 23, T6N, R93W, 6th P.M.
MOFFAT COUNTY, COLORADO

ACCESS ROAD
MAP

07 18 11
MONTH DAY YEAR

SCALE: 1" = 2000' DRAWN BY: S.F. REVISED: 00-00-00

B1
TOPO



LEGEND:

- EXISTING ROAD
- PROPOSED ACCESS ROAD
- EXISTING FENCE
- INSTALL CATTLE GUARD



Utah Engineering & Land Surveying
85 South 200 East Vernal, Utah 84078
(435) 789-1017 * FAX (435) 789-1813



QUICKSILVER RESOURCES, INC.

**K-DIAMOND RANCH #32-23, #44-22 & #32-10
SECTIONS 10, 22 & 23, T6N, R93W, 6th P.M.
MOFFAT COUNTY, COLORADO**

**ACCESS ROAD
MAP**

07 18 11
MONTH DAY YEAR

**B2
TOPO**

SCALE: 1" = 2000' DRAWN BY: S.F. REVISED: 00-00-00