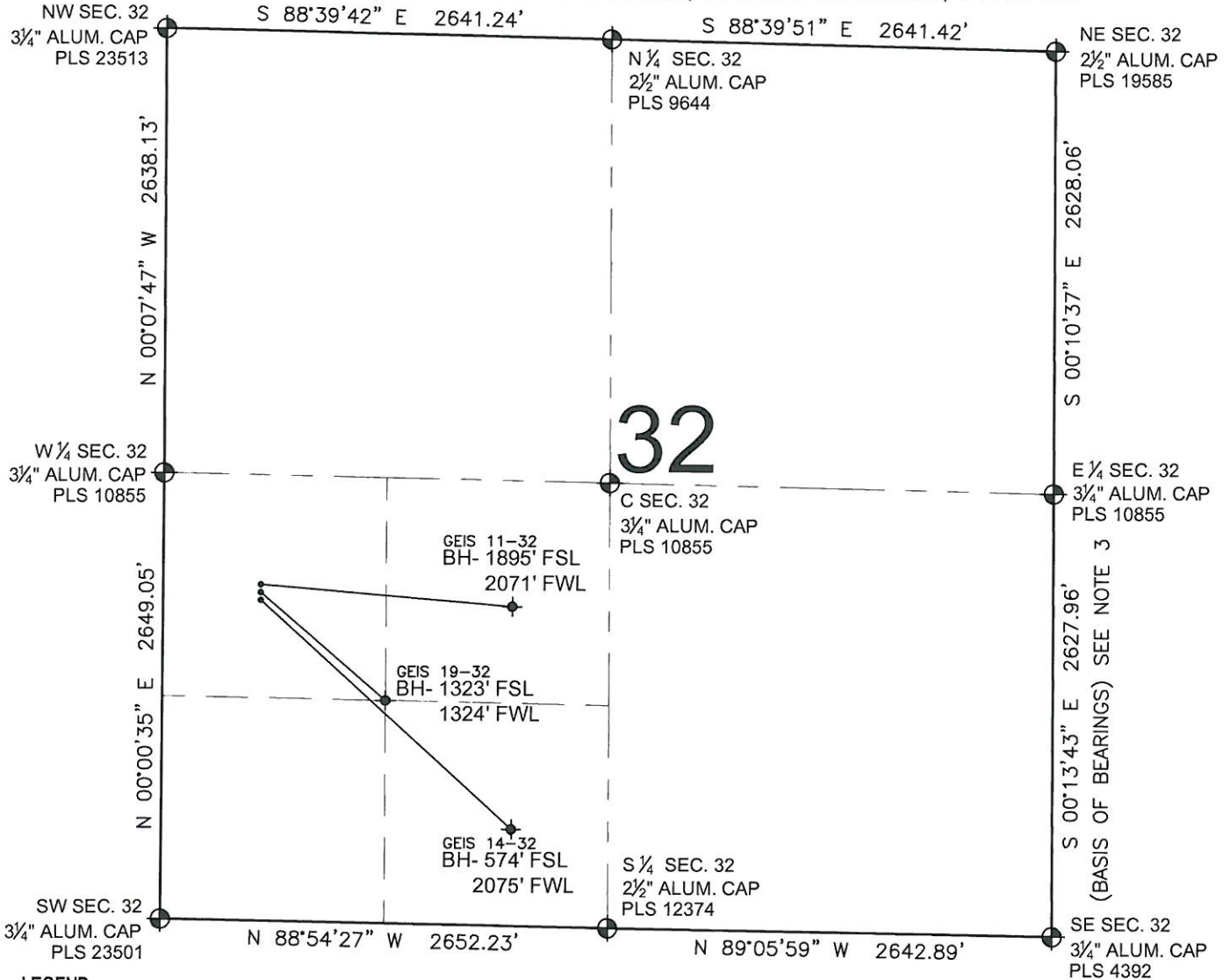


PAD DRAWING: GEIS 3 PAD

SECTION 32, TOWNSHIP 7 NORTH, RANGE 65 WEST, 6TH P.M.



LEGEND

- ⊕ = EXISTING MONUMENT
- = PROPOSED WELL
- ◆ = BOTTOM HOLE
- ◆ = EXISTING WELL
- BH= BOTTOM HOLE

NOTES:

- THIS FIELD SURVEY CONFORMS TO THE MINIMUM STANDARDS SET BY THE C.O.G.C.C., RULE NO. 215
- HORIZONTAL POSITIONS AND ORTHOMETRIC ELEVATIONS SHOWN AT THE WELL HEAD, ARE BASED ON GPS-RTK POSITIONS DERIVED FROM MINIMUM 2-HOUR STATIC OBSERVATIONS CORRECTED BY THE NATIONAL GEODETIC SURVEY ONLINE POSITIONING USER SERVICE, O.P.U.S. DATUM: HORIZONTAL = NAD83/2007, VERTICAL = NAVD88
- THE BASIS OF BEARINGS ARE STATE PLANE COORDINATE SYSTEM GRID BEARINGS SHOWN HEREON BETWEEN THE DESCRIBED THE MONUMENTS SHOWN HEREON.
- GRID DISTANCES ARE SHOWN, AS MEASURED IN THE FIELD, WITH TIES TO WELLS MEASURED PERPENDICULAR TO SECTION LINES.

NOTES:

- GEIS 11-32 TO BE AT 1997' FSL, 580' FWL.
 BOTTOM HOLE AT 1895' FSL & 2071' FWL.
 GEIS 19-32 TO BE AT 1982' FSL, 580' FWL.
 BOTTOM HOLE AT 1323' FSL & 1324' FWL.
 GEIS 14-32 TO BE AT 1967' FSL, 580' FWL.
 BOTTOM HOLE AT 574' FSL & 2075' FWL.

PREPARED BY:



BAYSWATER EXPLORATION & PRODUCTION, LLC

FIELD DATE: 05-18-11	PAD NAME: GEIS 3 PAD
DRAWING DATE: 06-13-11	SURFACE LOCATION: WELD COUNTY, COLORADO NW 1/4 SW 1/4, SEC. 32, T7N, R65W
BY: SMF	

