

SINGLE INDUCTION LOG

Company	Pioneer Natural Resources	Company	Pioneer Natural Resources
Well	Jake 21-15 Tr	Well	Jake 21-15 Tr
Field	Purgatoire River	Field	Purgatoire River
County	Las Animas	County	Las Animas
State	Colorado	State	Colorado
Location:		API #: 05 071 09630 00	
SEC 15 TWP 32S RGE 66W		CDNL	
Permanent Datum	Ground Level	Elevation	7602'
Log Measured From	Kelly Bushing 4' AGL		
Drilling Measured From	Kelly Bushing		
Date	8-12-11		
Run Number	One		
Depth Driller	1950'		
Depth Logger	1947'		
Bottom Logged Interval	1945'		
Top Log Interval	Surface Casing		
Casing Driller	8 5/8" @ 438'		
Casing Logger	436'		
Bit Size	7 7/8"		
Type Fluid in Hole	Water		
Density / Viscosity	///		
pH / Fluid Loss	///		
Source of Sample	///		
Rm @ Meas. Temp	///		
Rmf @ Meas. Temp	///		
Rmc @ Meas. Temp	///		
Source of Rmf / Rmc	///		
Rm @ BHT	///		
Time Circulation Stopped	4:30 A.M.		
Time Logger on Bottom	8:30 A.M.		
Maximum Recorded Temperature	82 DEG F		
Equipment Number	T590		
Location	Trinidad		
Recorded By	C. Sisneros		
Witnessed By	Mr. Derrick Berry		

<<< Fold Here >>>

All interpretations are opinions based on inferences from electrical or other measurements and we cannot and do not guarantee the accuracy or correctness of any interpretation, and we shall not, except in the case of gross or willful negligence on our part, be liable or responsible for any loss, costs, damages, or expenses incurred or sustained by anyone resulting from any interpretation made by any of our officers, agents or employees. These interpretations are also subject to our general terms and conditions set out in our current Price Schedule.

Comments

Directions:

Bon Carbo, left at Post Office, follow main RD to Y @ C.R. 30.1 and State Wild Life Area, Stay Straight, drive straight past Gourdins House, go thru gate with Hayden Ranch sign. drive past a location, at Y stay left, next Y stay right, follow road and dead end on location.

Database File: jaketr.db
Dataset Pathname: pass2.1
Presentation Format: iel
Dataset Creation: Fri Aug 12 09:52:05 2011 by Calc Open-Cased 110302
Charted by: Depth in Feet scaled 1:240

0	GR (GAPI)	200
-200	SP (mV)	0

0.2	DIR (Ohm-m)	2000
0.2	SN (Ohm-m)	2000

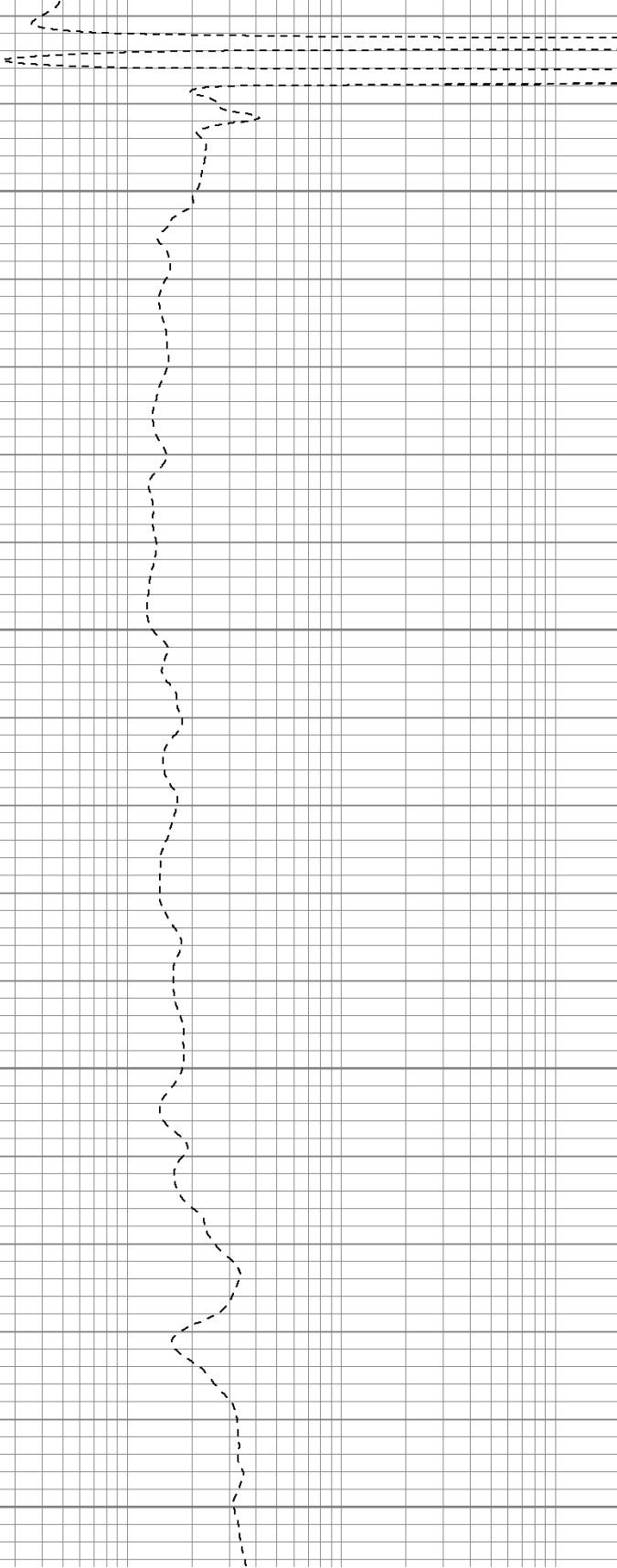
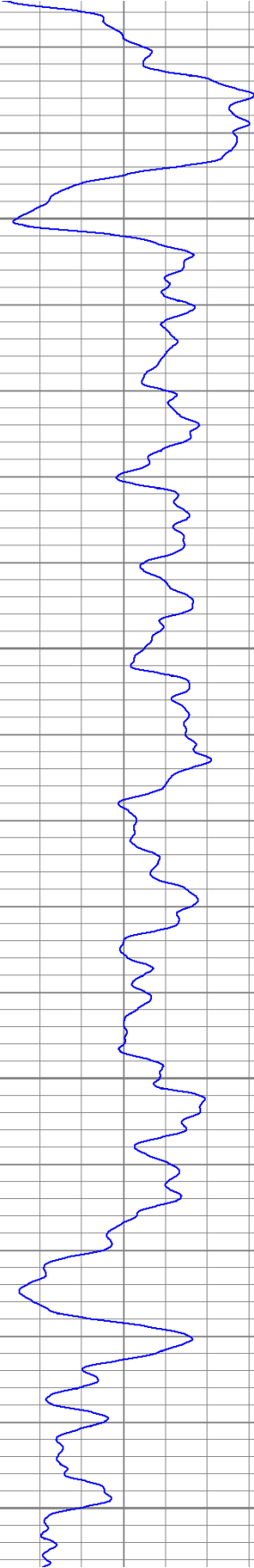
Surface Casing

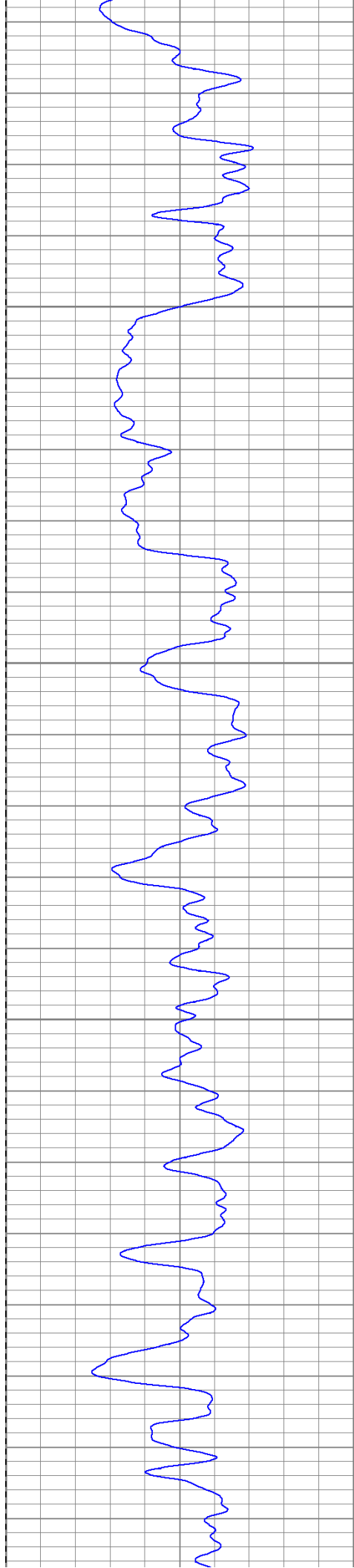
450

500

550

600



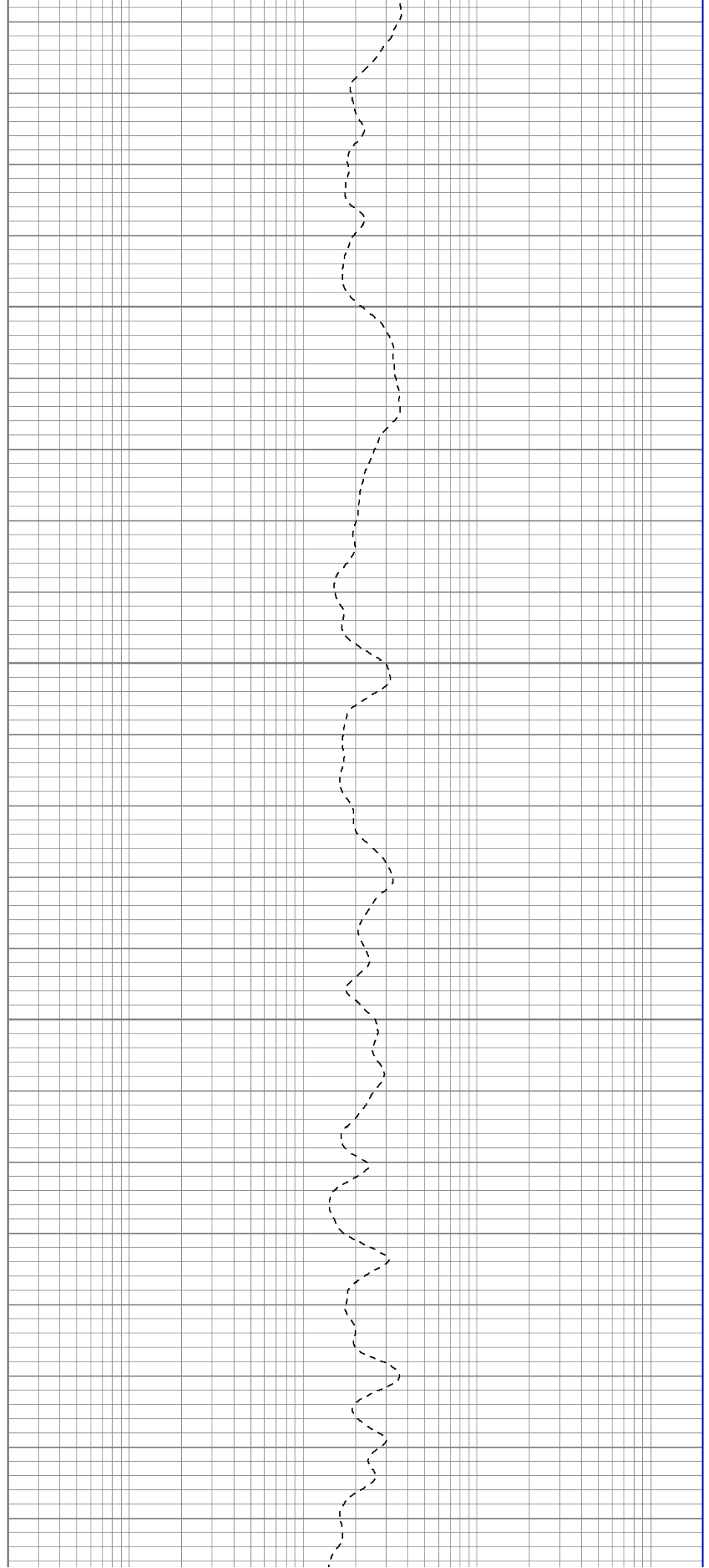


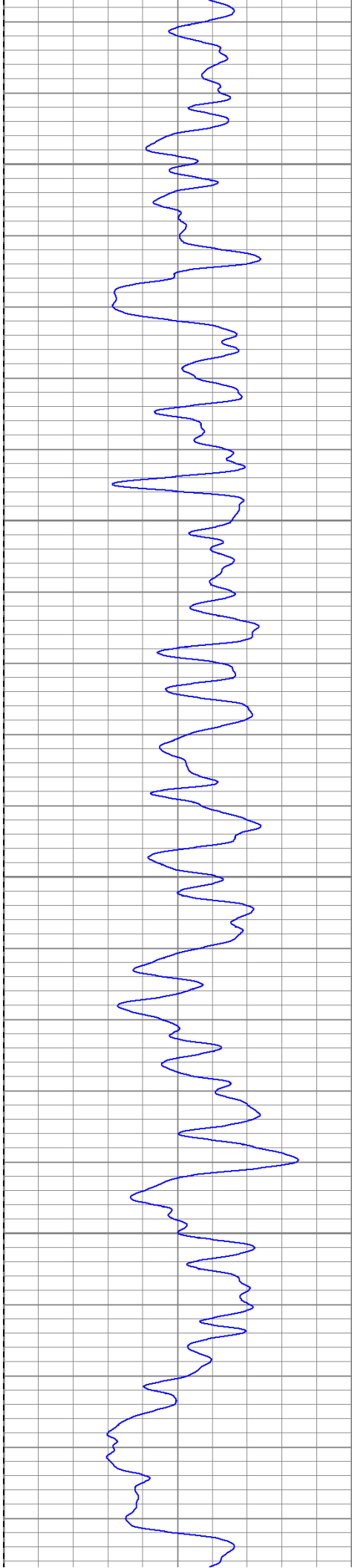
650

700

750

800



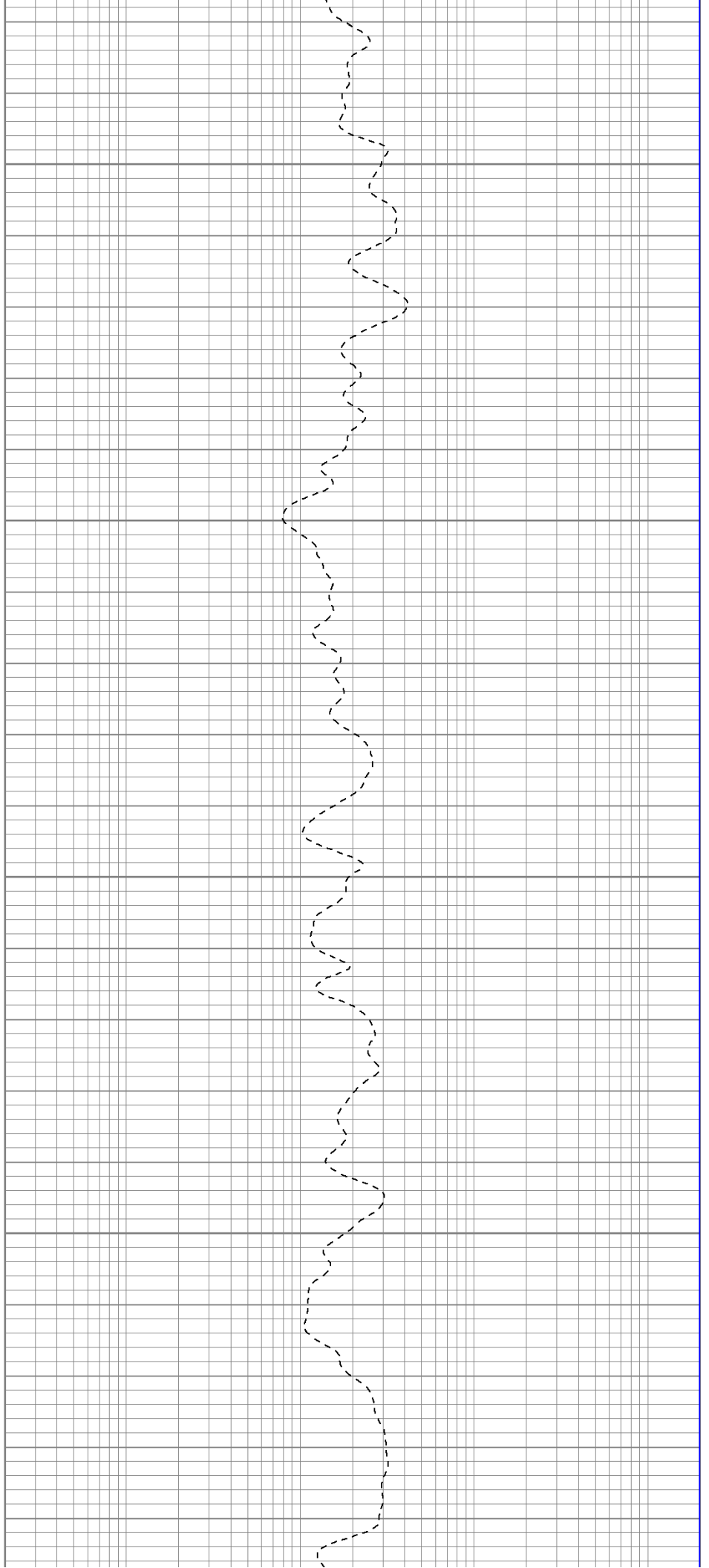


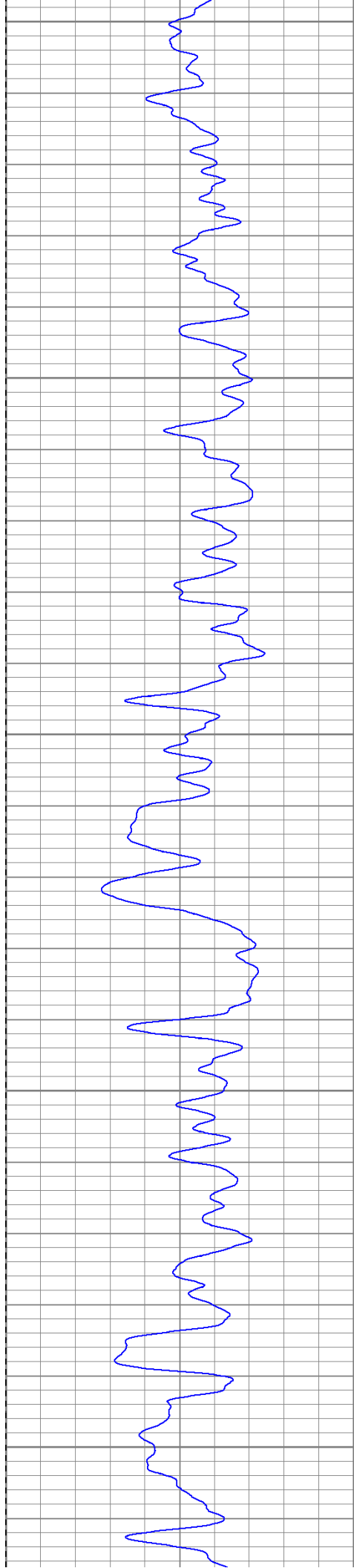
850

900

950

1000





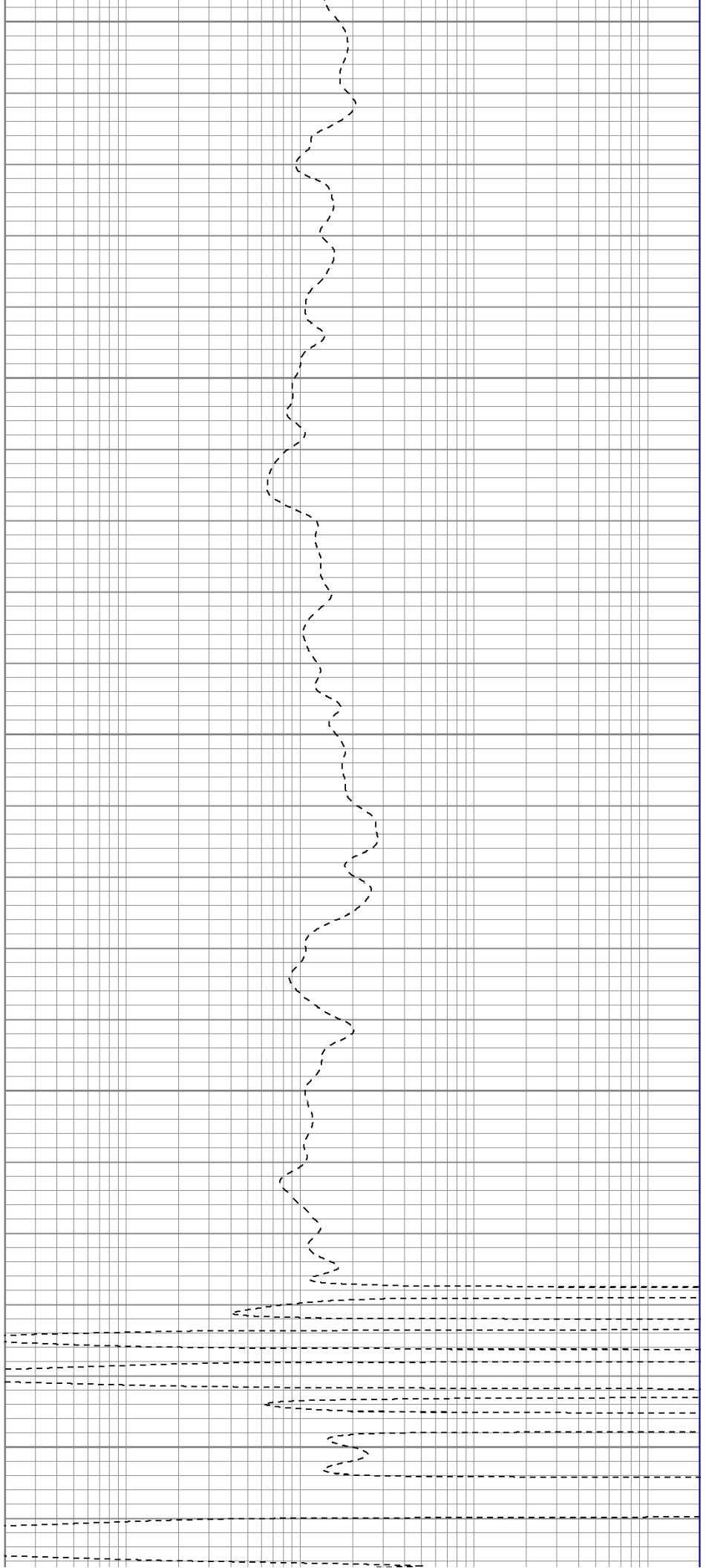
1050

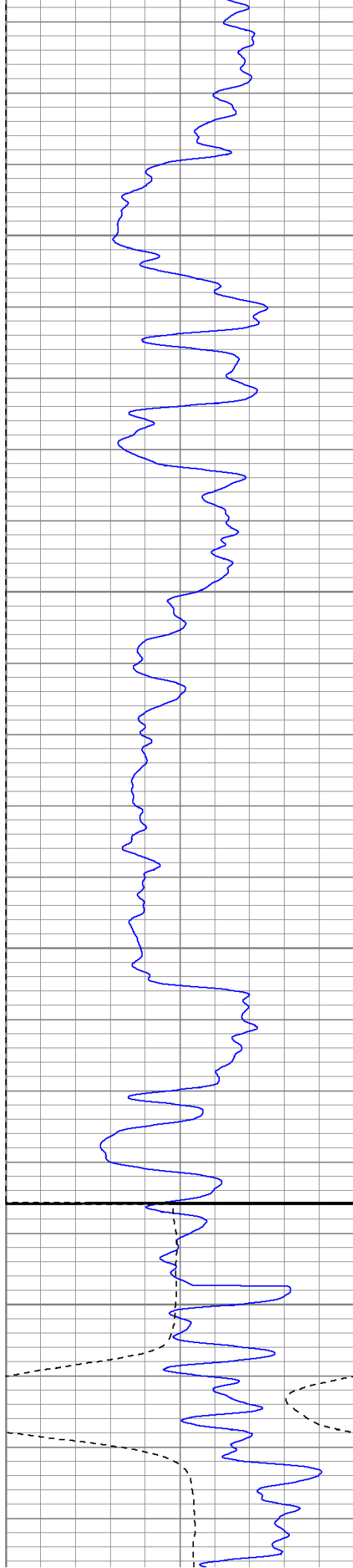
1100

1150

1200

1250





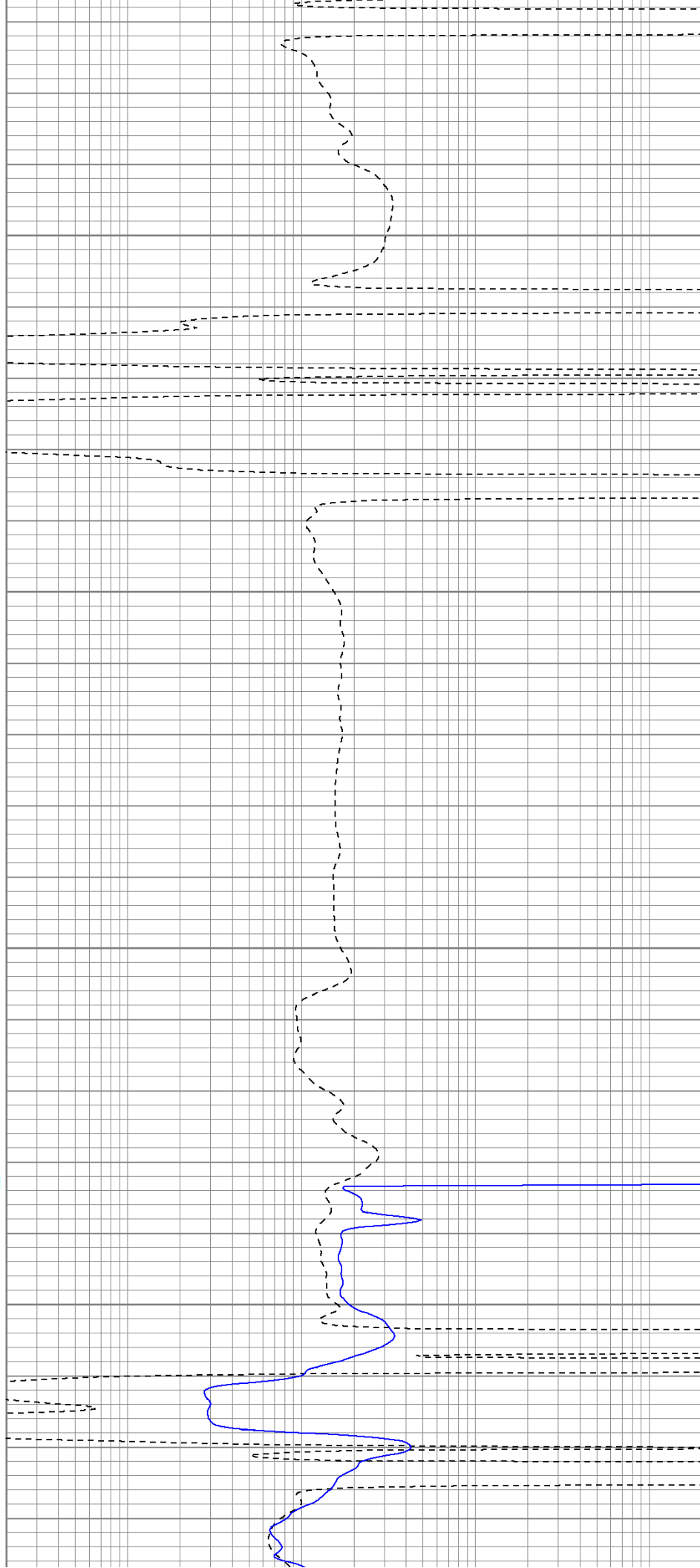
1300

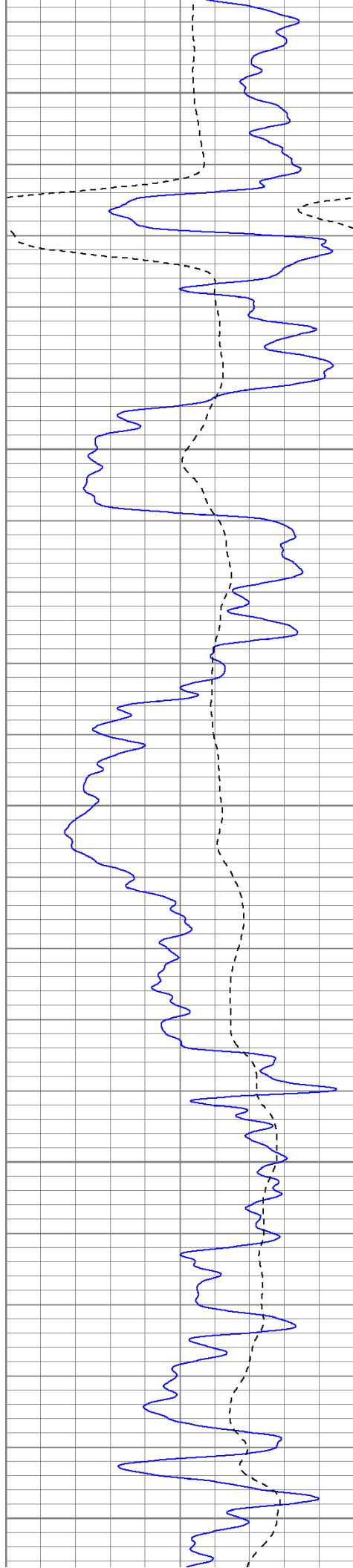
1350

1400

Fluid Level

1450





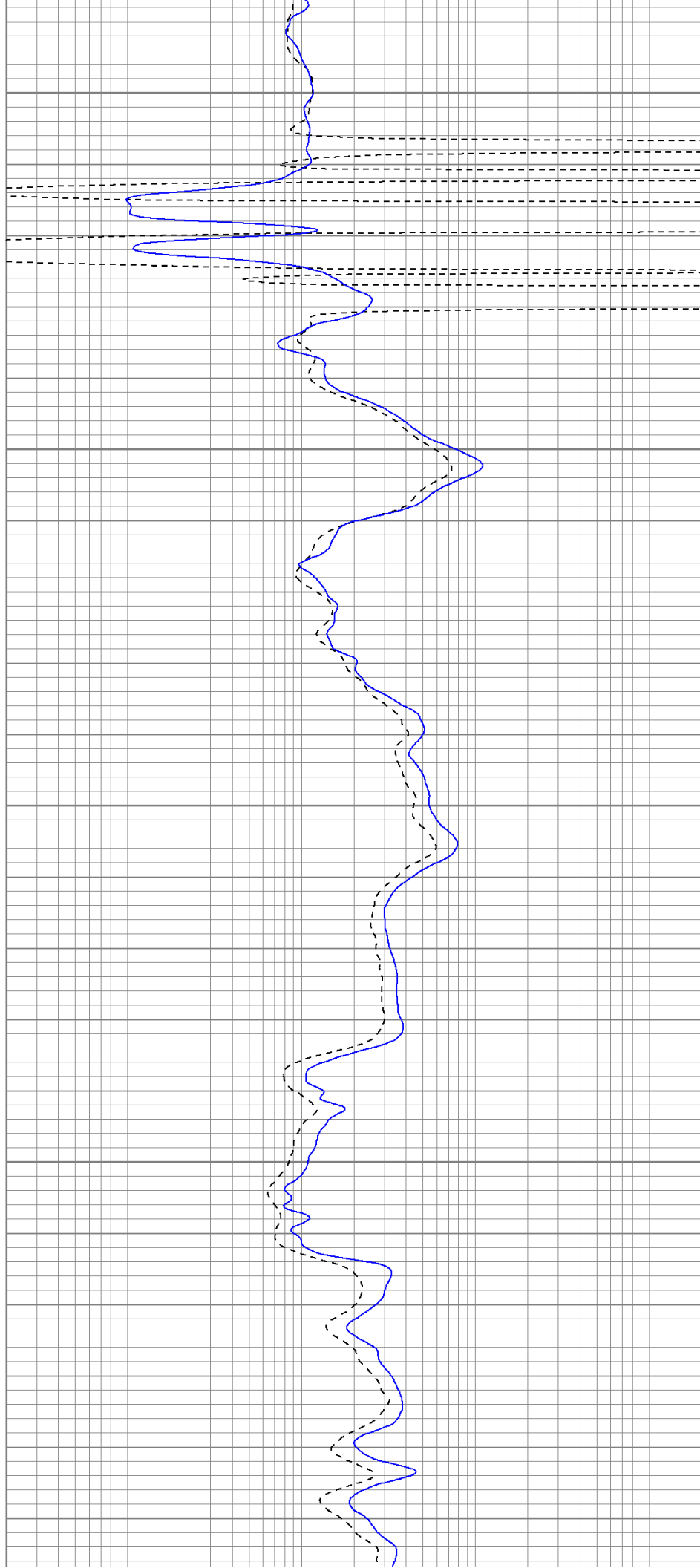
1500

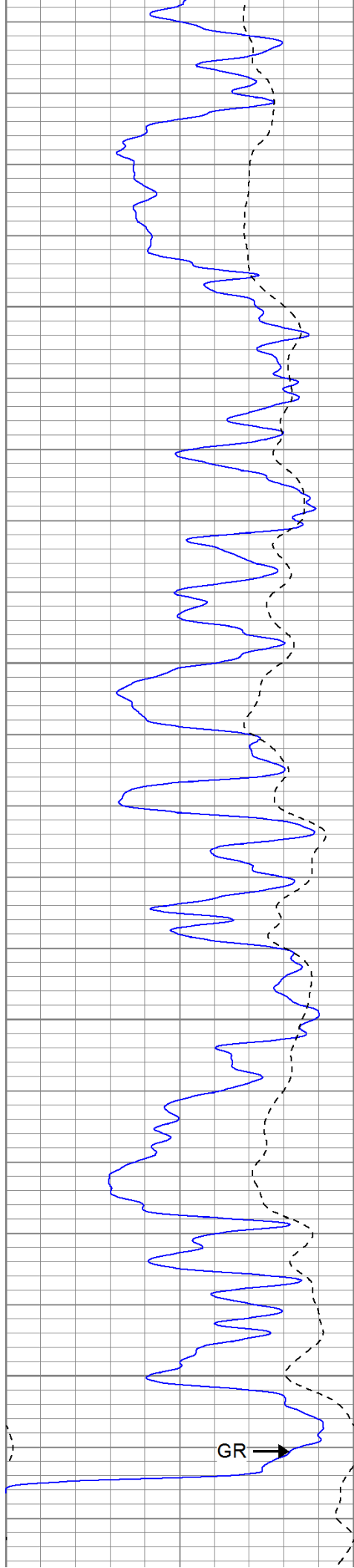
1550

1600

1650

1700





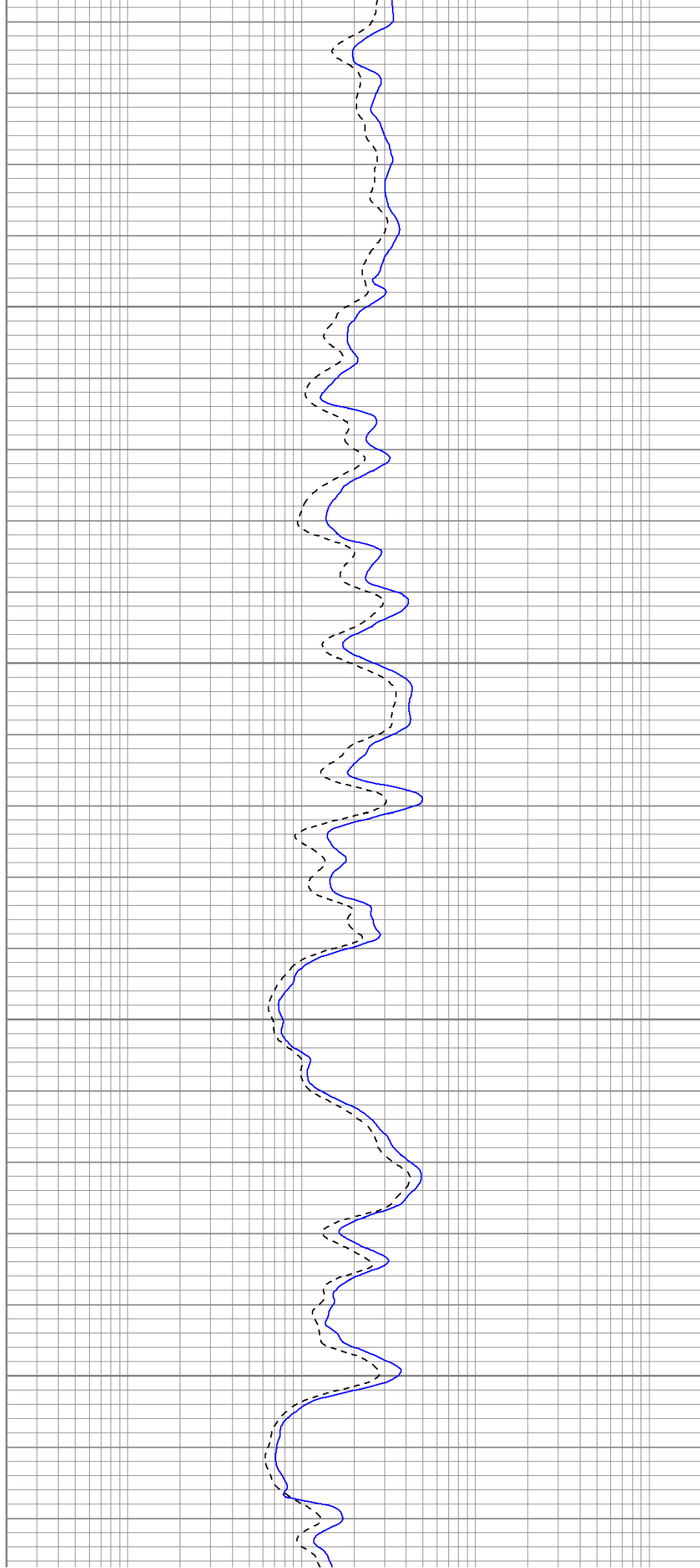
1750

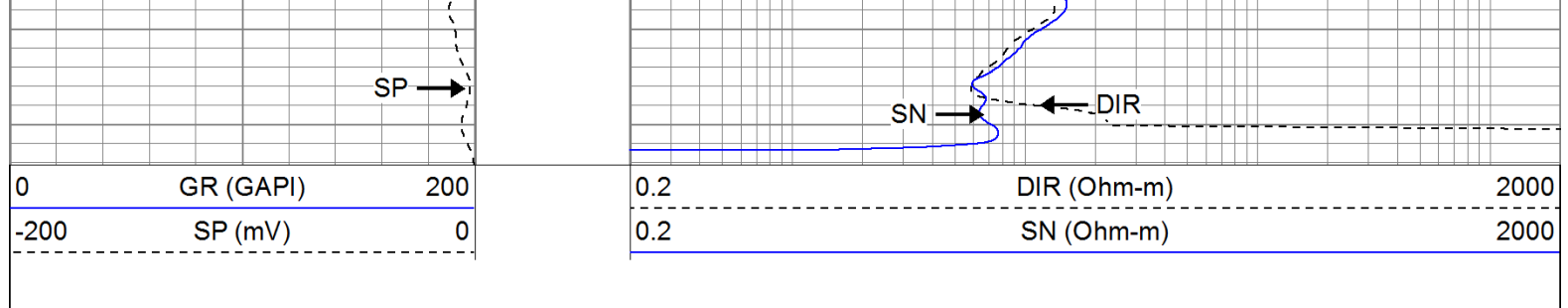
1800

1850

1900

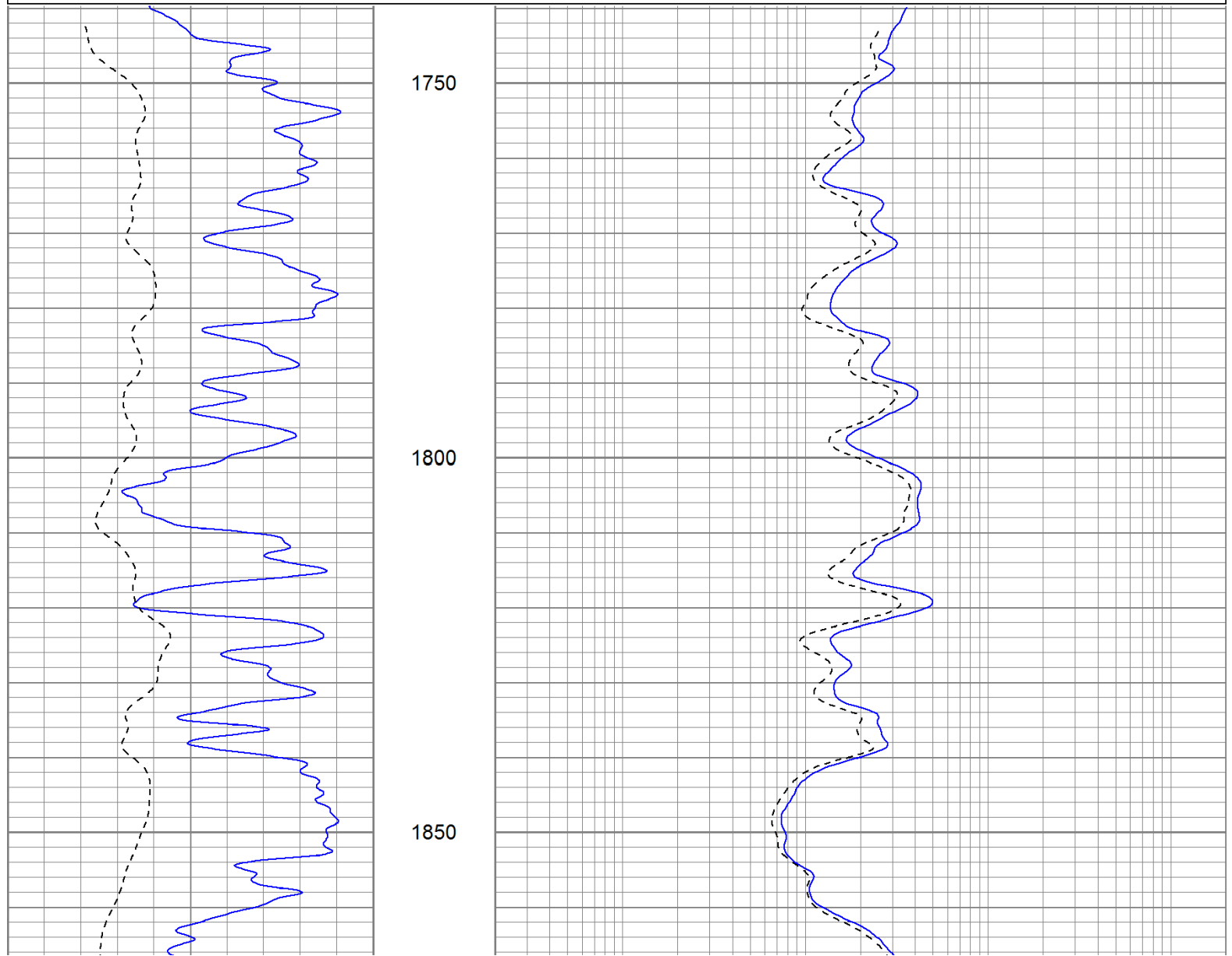
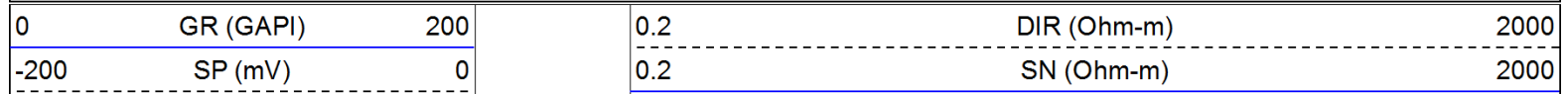
GR →

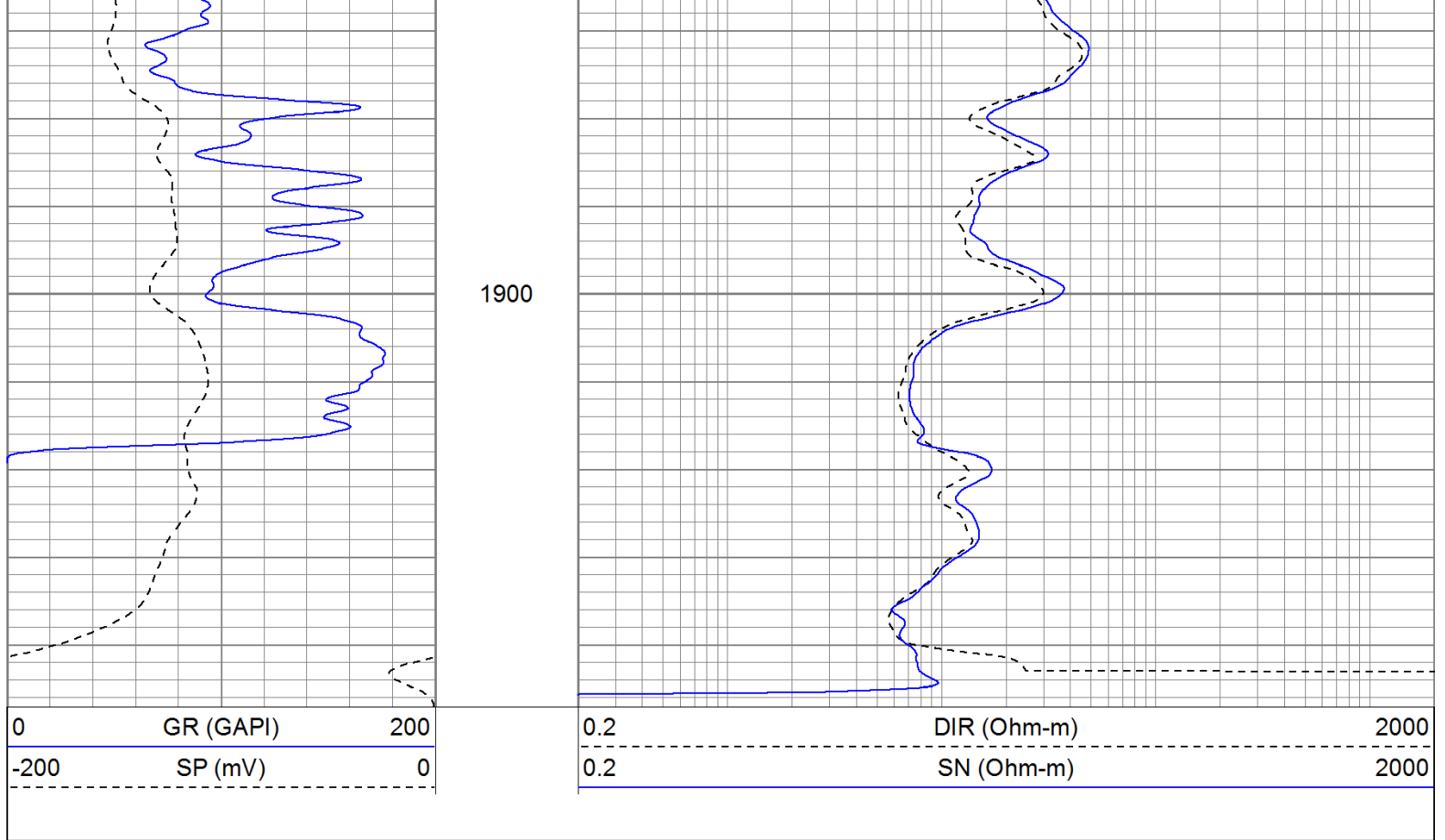




Repeat Pass

Database File: jaketr.db
Dataset Pathname: pass1.1
Presentation Format: iel
Dataset Creation: Fri Aug 12 09:57:16 2011 by Calc Open-Cased 110302
Charted by: Depth in Feet scaled 1:240





Calibration Report

Database File: jaketr.db
 Dataset Pathname: pass1
 Dataset Creation: Fri Aug 12 08:50:11 2011 by Log Open-Cased 110302

Induction Tool Calibration Report

Serial Number: 903
 Tool Model: Probe
 Downhole Cal Performed: Sat Jun 18 15:02:12 2011
 Surface Cal Performed: Sat Jun 18 17:40:00 2011
 After Survey Verification Performed:

Surface Calibration:	Air	Loop	
Conductivity Reference:	0.000	500.000	mmho
Conductivity Reading:	-0.045	0.642	V
Internal Reference:	Zero	Cal	
Conductivity Reference:	0.000	500.000	mmho
Conductivity Reading:	0.006	0.641	V

Downhole Calibration:	Internal Zero	Internal Cal	
Conductivity Reference:	-0.702	499.904	mmho
Conductivity Reading:	-0.082	503.319	V
Short Normal Reference:	0.000	20.000	Ohm-m
Short Normal Reading:	0.006	0.233	V

Results:	Gain	Offset
Loop Conductivity:	728.211	32.770
Downhole Correction:	0.994	-0.621
Short Normal Resistivity:	88.245	-3.000

After Survey Verification	Internal Zero	Internal Cal	
Conductivity Reading:	0.000	0.000	V
Conductivity Result:	0.000	0.000	mmho
Short Normal Reading:	0.000	0.000	V
Short Normal Result:	0.000	0.000	Ohm-m

Compensated Density Calibration Report

Serial-Model: 901-2.75POH
 Source / Verifier: /
 Master Calibration Performed: Wed Jun 08 09:11:26 2011
 Before Survey Verification Performed:
 After Survey Verification Performed:

Master Calibration

	Density		Far Detector	Near Detector	
Magnesium	1.710	g/cc	1001.79	578.48	cps
Aluminum	2.590	g/cc	180.36	300.39	cps
Spine Angle = 69.08			Density/Spine Ratio = 0.479		
	Size		Reading		
Small Ring	8.00	in	2.50	V	
Large Ring	16.00	in	4.57	V	

Before Survey Verification

Target	Measured
g/cc	g/cc
g/cc	g/cc
g/cc	g/cc

After Survey Verification

Target	Measured
g/cc	g/cc
g/cc	g/cc
g/cc	g/cc

Neutron Calibration Report


Serial Number: 803
 Tool Model: 2.75POH
 Performed: Wed Jun 08 13:12:55 2011

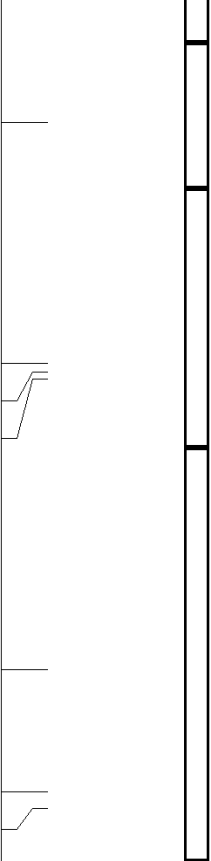
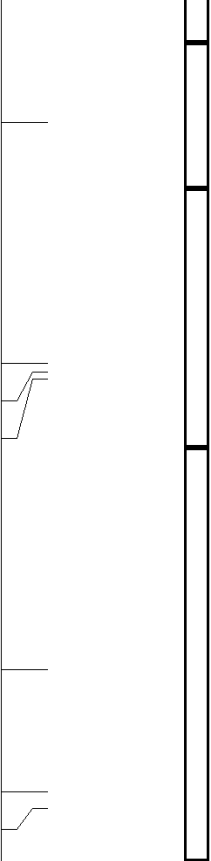
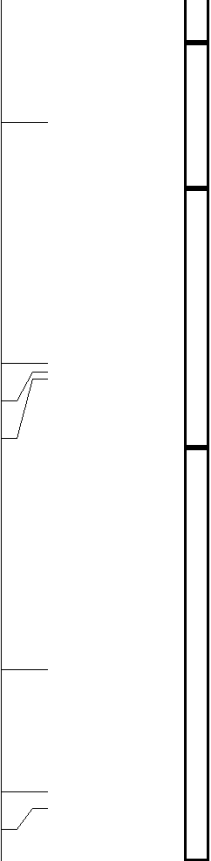
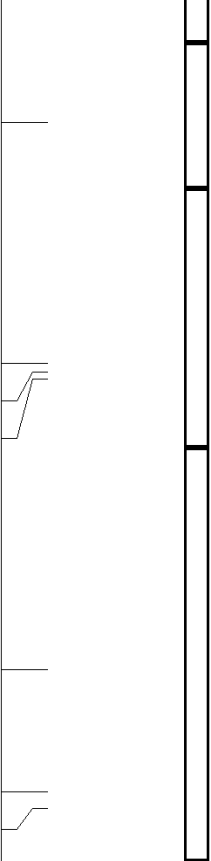
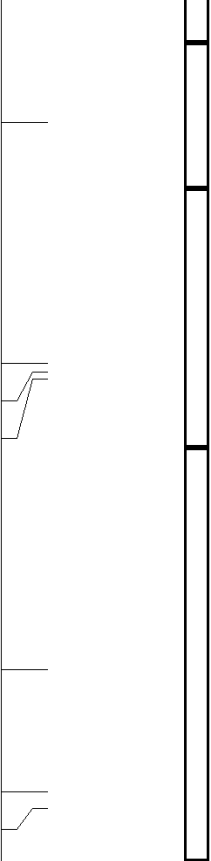
 Calibrator Value: 1 NAPI
 Calibrator Reading: 1 cps
 Sensitivity: 1 NAPI/cps

Gamma Ray Calibration Report

Serial Number: 804
 Tool Model: 2.75POH
 Performed: Fri Aug 12 08:39:59 2011

 Calibrator Value: 1.0 GAPI
 Background Reading: 0.0 cps
 Calibrator Reading: 1.0 cps
 Sensitivity: 0.6500 GAPI/cps

Sensor	Offset (ft)	Schematic	Description	Len (ft)	OD (in)	Wt (lb)
GR	29.58		None	0.75	1.50	5.00
			GR-2.75POH (804)	3.73	2.75	43.00

NEU	24.04		Probe 2.75" Probe Open Hole Gamma Ray				
			NEU-2.75POH (803) Probe Epithermal		4.75	2.75	58.00
LSD	16.21		CDL-2.75POH (901) Probe		8.43	2.75	106.00
DCAL	15.94						
SSD	15.69						
DIC	6.24		IEL-Probe (903)		13.46	2.75	93.00
SP	2.25						
SN	1.71						
			Dataset: jaketr.db: field/well/run1/pass2 Total Length: 31.11 ft Total Weight: 305.00 lb O.D. 2.75 in				