

Company	Noble Energy Inc.		
Well	Auxier USX ZN 5-19		
Field	Wattenberg		
County	Arapahoe	State/Province	Colorado
Location	1257' FNL & 1320' FWL NW/NW Sec. 5, Twp. 4S, Rge. 63W		
Permanent Datum	GL	Elevation	5552
Log Measured From	KB		
Drilling Measured From	KB		
Date	June 6, 2008		
Run Number	1		
Depth Driller	7949		
Depth Logger	7952		
Bottom Logged Interval	7952		
Top Log Interval	Casing		
Casing Driller	659		
Casing Logger	659		
Bit Size	7-7/8"		
Type Fluid in Hole	Chem Gel		
Density / Viscosity	9.7 / 120		
pH / Fluid Loss	7.0 / 8.0		
Source of Sample	Flowline		
Rm @ Meas. Temp	3.51 @ 79° F		
Rmt @ Meas. Temp	2.80 @ 79° F		
Rmc @ Meas. Temp	4.22 @ 79° F		
Source of Rmt / Rmc	Measure / Calc		
Rm @ BHT	1.15 @ 197° F		
Time Circulation Stopped	1800		
Time Logger on Bottom	0010		
Maximum Recorded Temperature	197° F		
Equipment Number	4800		
Location	Brighton, CO		
Recorded By	Ian Harris		
Witnessed By	Brody Hansen		
Other Services Density Neutron Micro Log Elevation			
K.B. 5566 D.F. 5565 G.L. 5552			

<<< Fold Here >>>

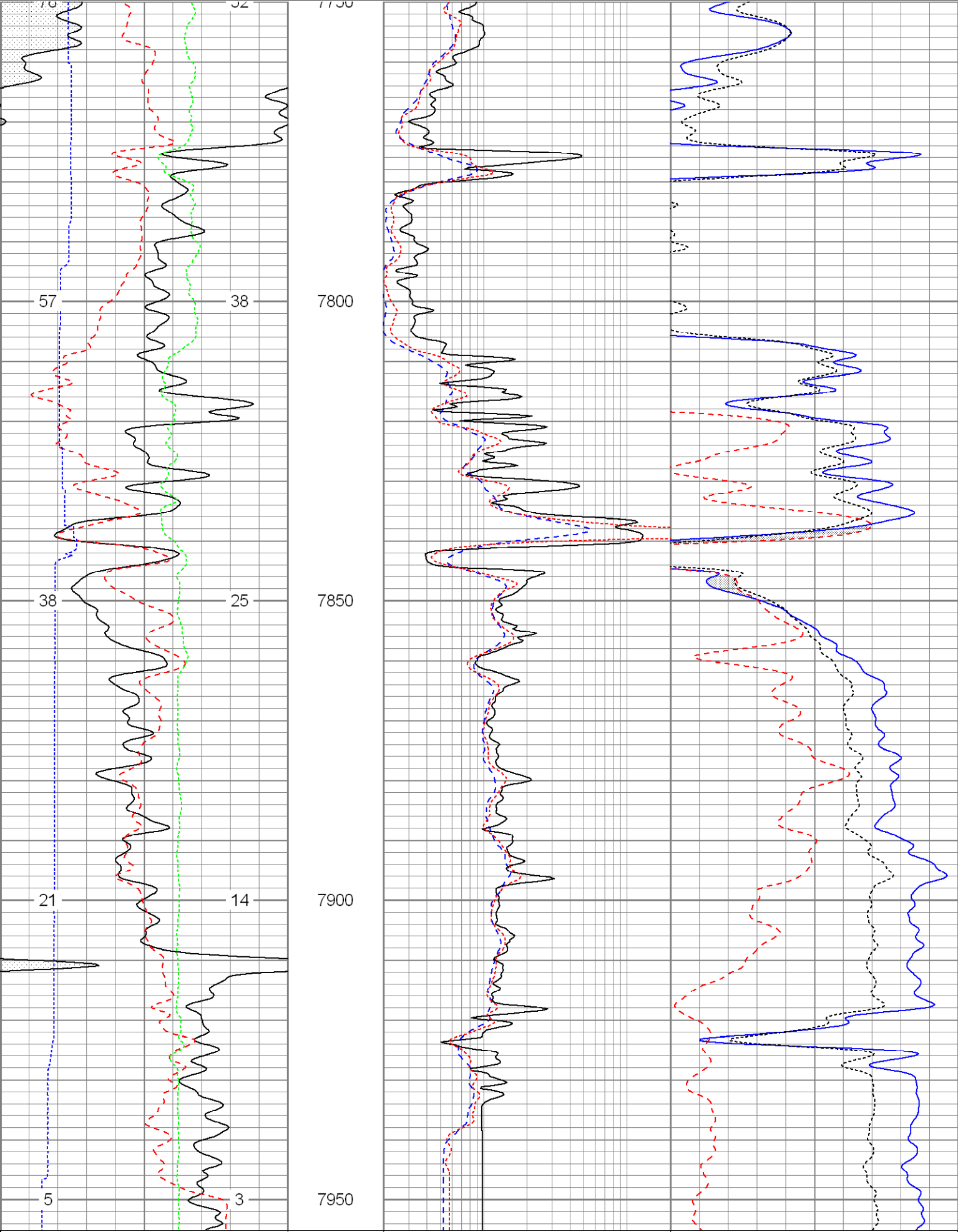
All interpretations are opinions based on inferences from electrical or other measurements and we cannot and do not guarantee the accuracy or correctness of any interpretation, and we shall not, except in the case of gross or willful negligence on our part, be liable or responsible for any loss, costs, damages, or expenses incurred or sustained by anyone resulting from any interpretation made by any of our officers, agents or employees. These interpretations are also subject to our general terms and conditions set out in our current Price Schedule.

Comments

Annular volume calculated for 4.5" casing  
Ensign Drilling Rig 128  
Thank you for using Phoenix Surveys!!  
API #: 05-005-07137-00

Database File: 8718.db  
Dataset Pathname: pass5  
Presentation Format: split20  
Dataset Creation: Sat Jun 07 00:11:58 2008 by Log Open-Cased 070814  
Charted by: Depth in Feet scaled 1:240

0	Gamma Ray (GAPI)	200	2	Deep Resistivity (Ohm-m)	200	20	Density Porosity (pu)	0
0	SP (mV)	200	2	Shallow Resistivity (Ohm-m)	200	20	Neutron Porosity (pu)	0
-0.5	Corr (g/cc)	0.5	2	Medium Resistivity (Ohm-m)	200	2.25	RHOB (g/cc)	2.75
6	Caliper (in)	16						



0	Gamma Ray (GAPI)	200	2	Deep Resistivity (Ohm-m)	200	20	Density Porosity (pu)	0
0	SP (mV)	200	2	Shallow Resistivity (Ohm-m)	200	20	Neutron Porosity (pu)	0
-0.5	Corr (g/cc)	0.5	2	Medium Resistivity (Ohm-m)	200	2.25	RHOB (g/cc)	2.75
6	Caliper (in)	16						