

Schlumberger

Company: **ExxonMobil Production Corp.**

Well: **PCU 296-5A9**

Field: **Piceance Creek**

County: **Rio Blanco**

State: **Colorado**

IMAGING BEHIND CASING ULTRASONIC TOOL GAMMA RAY - CCLU

County: Rio Blanco
 Field: Piceance Creek
 Location: SHL: Sec 5-T2S-R96W
 Well: PCU 296-5A9
 Company: ExxonMobil Production Corp.

SHL: Sec 5-T2S-R96W		Elev.:	K.B. 7324.20 ft
		G.L.	7294.00 ft
		D.F.	7323.00 ft
Permanent Datum:	GROUND LEVEL	Elev.:	7294.00 ft
Log Measured From:	KELLY BUSHING	30.20 ft	above Perm. Datum
Drilling Measured From:	KELLY BUSHING		
API Serial No.	Section	Township	Range
05-103-11241-00	5	2S	96W

PVT DATA		Run 1	Run 2	Run 3
Oil Density				
Water Salinity				
Gas Gravity				
Bo				
Bw				
1/Bq				
Bubble Point Pressure				
Bubble Point Temperature				
Solution GOR				
Maximum Deviation				
CEMENTING DATA				
Primary/Squeeze	Primary			
Casing String No				
Lead Cement Type				
Volume				
Density	11 lbm/gal			
Water Loss				
Additives				
Tail Cement Type				
Volume				
Density				
Water Loss				
Additives				
Expected Cement Top	4200 ft			

Logging Date	16-Mar-2011
Run Number	1
Depth Driller	9905 ft
Schlumberger Depth	9800 ft
Bottom Log Interval	9800 ft
Top Log Interval	4000 ft
Casing Fluid Type	Fresh Water
Salinity	
Density	8.35 lbm/gal
Fluid Level	30 ft
BIT/CASING/TUBING STRING	
Bit Size	8.875 in
From	30 ft
To	9940 ft
Casing/Tubing Size	7.000 in
Weight	26 lbm/ft
Grade	
From	30 ft
To	9940 ft
Maximum Recorded Temperatures	
Logger On Bottom	16-Mar-2011
Unit Number	2379
Recorded By	Mike Septon
Witnessed By	Marc

Logging Date	
Run Number	
Depth Driller	
Schlumberger Depth	
Bottom Log Interval	
Top Log Interval	
Casing Fluid Type	
Salinity	
Density	
Fluid Level	
BIT/CASING/TUBING STRING	
Bit Size	
From	
To	
Casing/Tubing Size	
Weight	
Grade	
From	
To	
Maximum Recorded Temperatures	
Logger On Bottom	
Unit Number	
Recorded By	
Witnessed By	

DEPTH SUMMARY LISTING

Date Created: 16-MAR-2011 12:48:52

Depth System Equipment

Depth Measuring Device	Tension Device	Logging Cable
Type: IDW-B Serial Number: 600807 Calibration Date: 27-Oct-2010 Calibrator Serial Number: 33 Calibration Cable Type: 7-46P Wheel Correction 1: -6 Wheel Correction 2: -6	Type: CMTD-B/A Serial Number: 8093 Calibration Date: 13-Mar-2011 Calibrator Serial Number: 1159 Number of Calibration Points: 10 Calibration RMS: 22 Calibration Peak Error: 35	Type: 7-46ZV XS Serial Number: 709025 Length: 28767 FT Conveyance Method: Wireline Rig Type: Rigless

Depth Control Parameters

Log Sequence: First Log In the Well
Rig Up Length At Surface: 176.00 FT
Rig Up Length At Bottom: 176.00 FT
Rig Up Length Correction: 0.00 FT
Stretch Correction: 5.00 FT
Tool Zero Check At Surface: 0.00 FT

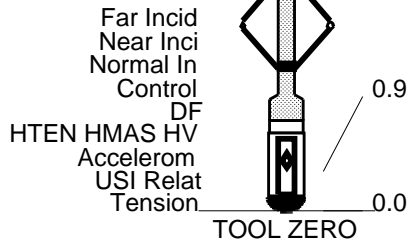
Depth Control Remarks

1. Schlumberger depth control standards followed
2. IDW used as primary depth control, Z-Chart used as secondary depth control
3.
4.
5.
6.

DISCLAIMER

THE USE OF AND RELIANCE UPON THIS RECORDED-DATA BY THE HEREIN NAMED COMPANY (AND ANY OF ITS AFFILIATES, PARTNERS, REPRESENTATIVES, AGENTS, CONSULTANTS AND EMPLOYEES) IS SUBJECT TO THE TERMS AND CONDITIONS AGREED UPON BETWEEN SCHLUMBERGER AND THE COMPANY, INCLUDING: (a) RESTRICTIONS ON USE OF THE RECORDED-DATA; (b) DISCLAIMERS AND WAIVERS OF WARRANTIES AND REPRESENTATIONS REGARDING COMPANY'S USE OF AND RELIANCE UPON THE RECORDED-DATA; AND (c) CUSTOMER'S FULL AND SOLE RESPONSIBILITY FOR ANY INFERENCE DRAWN OR DECISION MADE IN CONNECTION WITH THE USE OF THIS RECORDED-DATA.

OTHER SERVICES1	OTHER SERVICES2
OS1: NONE	OS1:
OS2:	OS2:
OS3:	OS3:
OS4:	OS4:
OS5:	OS5:
REMARKS: RUN NUMBER 1	REMARKS: RUN NUMBER 2
This is the first run in the well	
Tool string ran as per tool sketch	
Tool centralized with 2 in-line centralizers	
Neutron tool ran for GR only	
Logging speed: 1800 ft/hr	
Expected casing thickness: .362"	



MAXIMUM STRING DIAMETER 4.48 IN
 MEASUREMENTS RELATIVE TO TOOL ZERO
 ALL LENGTHS IN FEET



MAIN PASS

MAXIS Field Log

Company: ExxonMobil Production Corp. Well: PCU 296-5A9

Input DLIS Files

USI_TLD_MCFL_CNL_020LUP FN:29 16-Jun-2011 10:37 9800.0 FT 3999.0 FT

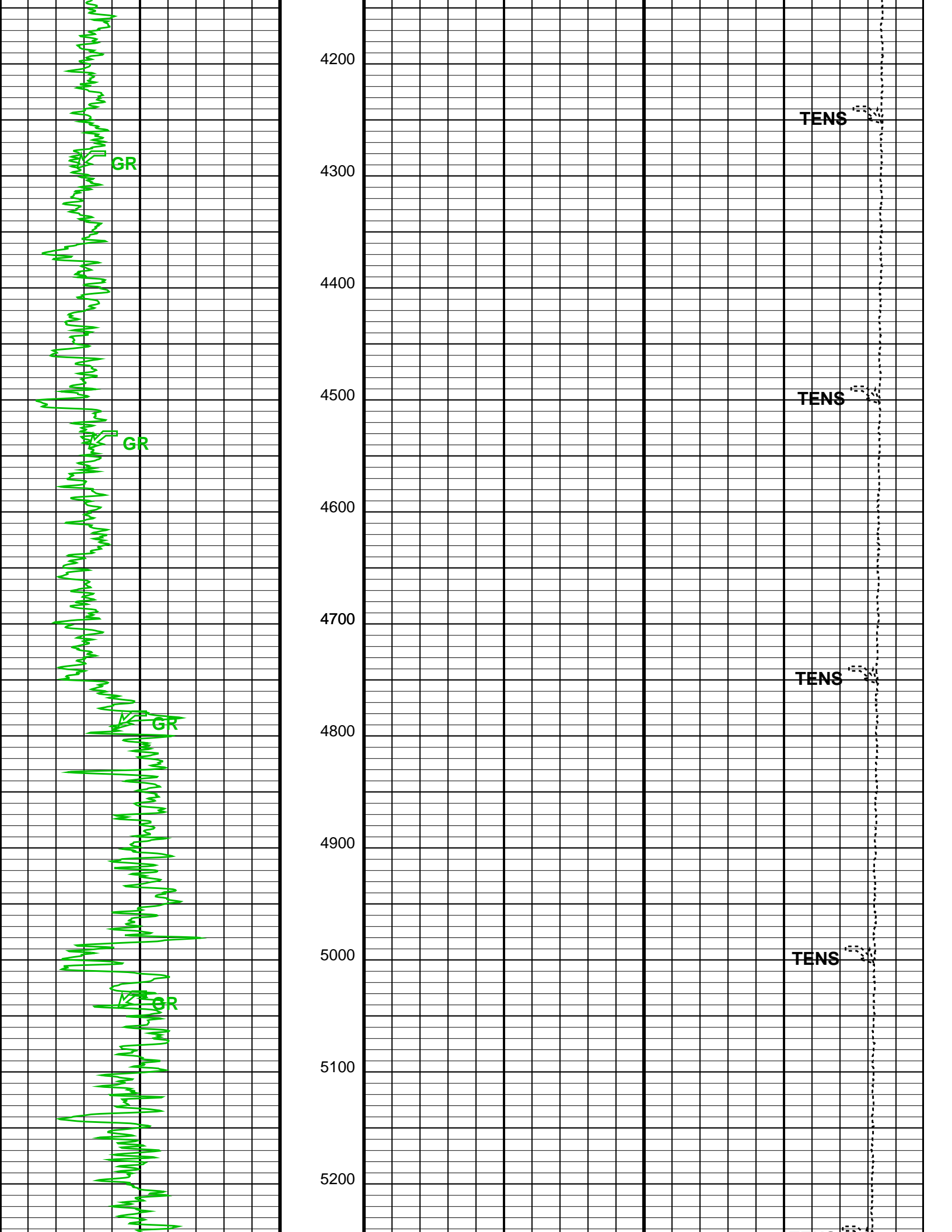
Output DLIS Files

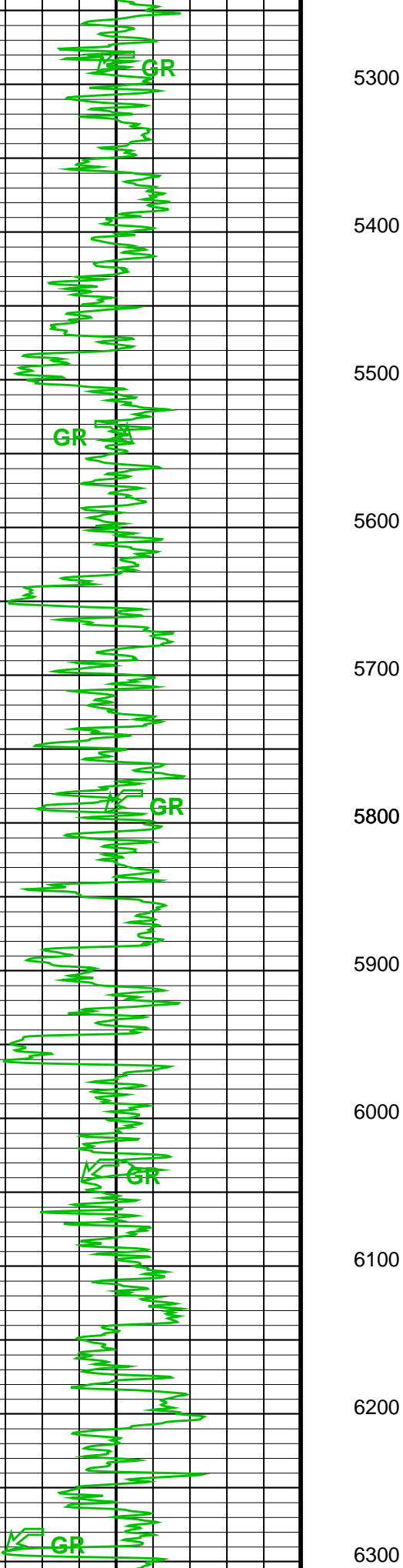
DEFAULT USI_TLD_MCFL_CNL_003PUP FN:2 PRODUCER 16-Jun-2011 13:08 9800.0 FT 3999.1 FT

OP System Version: 17C0-154

USIT-D 17C0-154 HILTH-FTB 17C0-154
 DTC-H 17C0-154

Gamma Ray (GR) (GAPI)		Tension (TENS) (LBF)	
0	150	10000	0
4100			

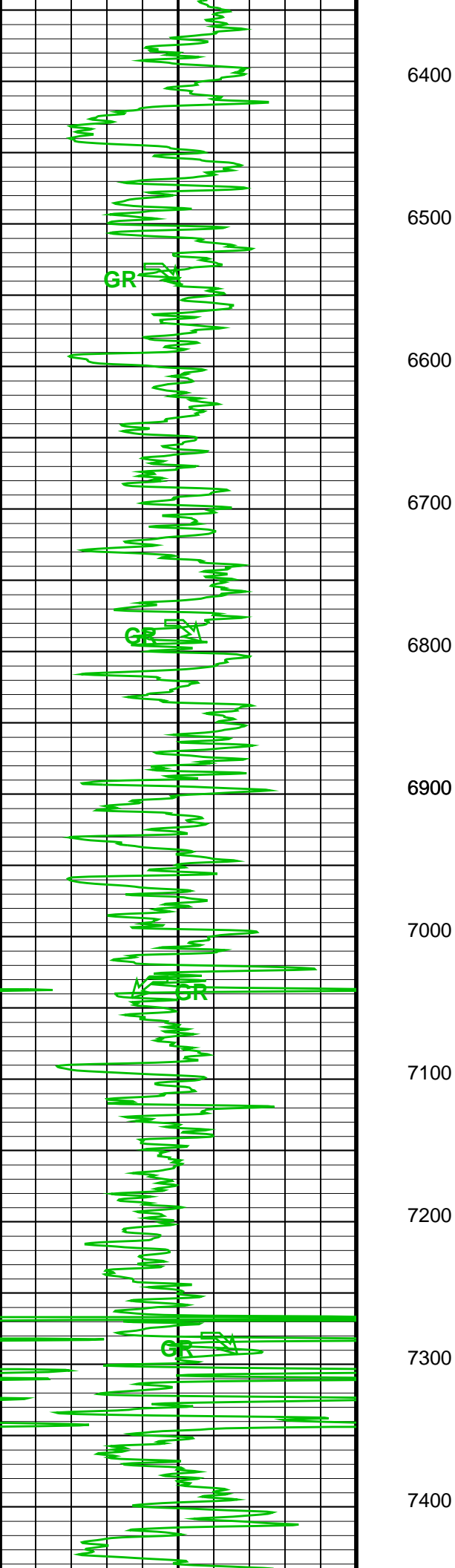




5300
5400
5500
5600
5700
5800
5900
6000
6100
6200
6300



TENS
TENS
TENS
TENS
TENS



6400

6500

6600

6700

6800

6900

7000

7100

7200

7300

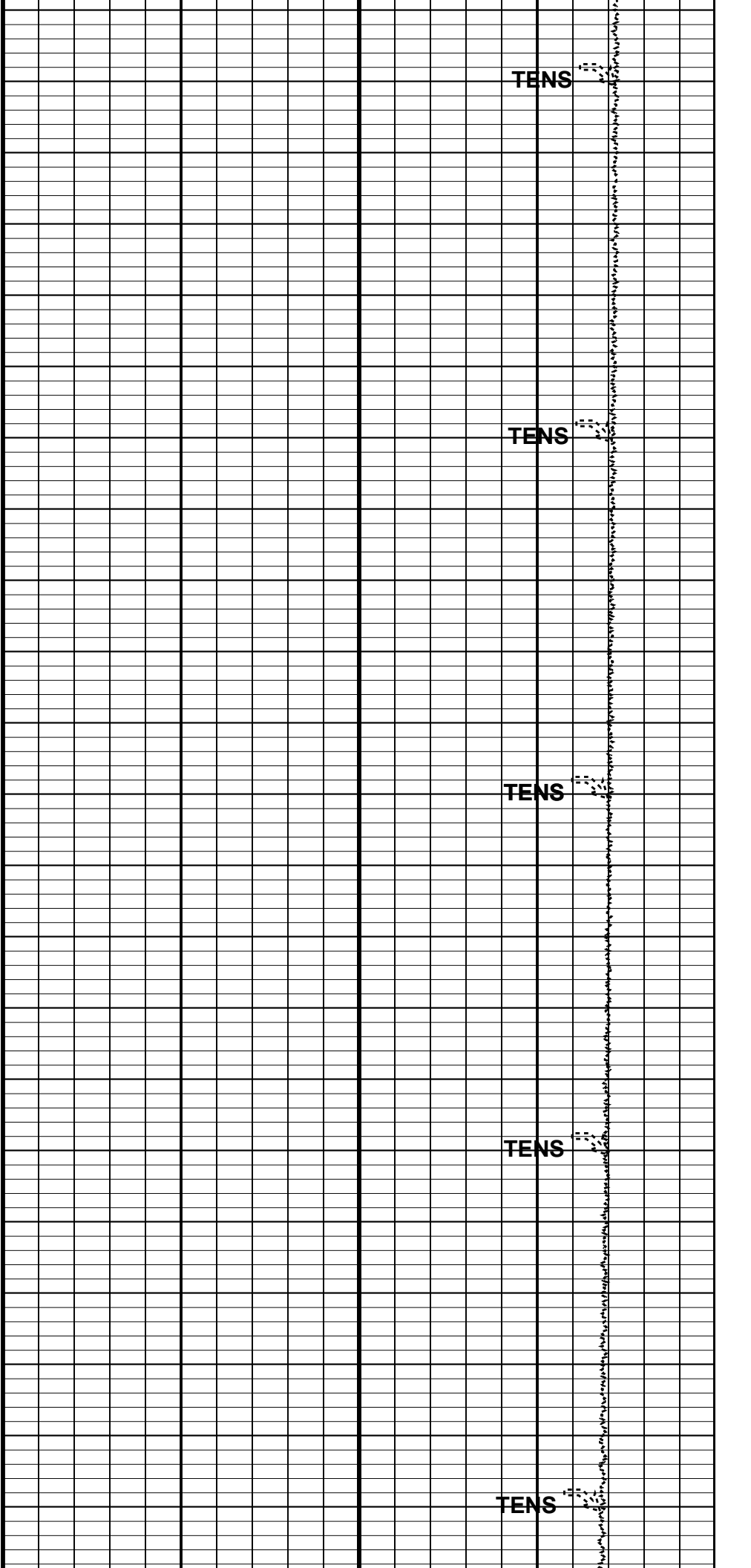
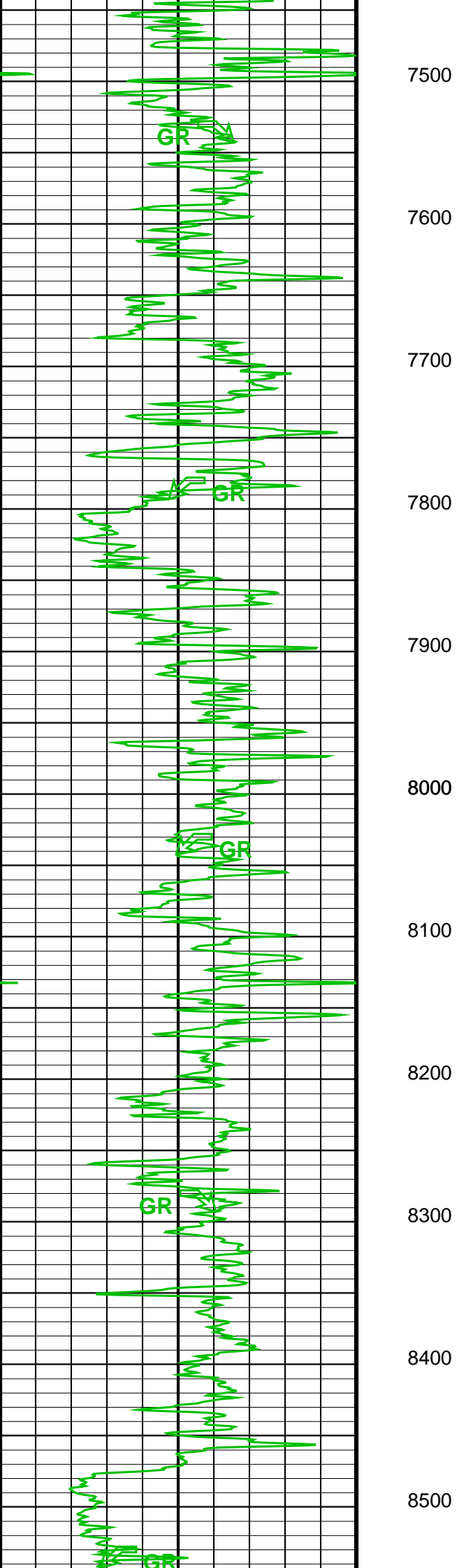
7400

TENS

TENS

TENS

TENS



8600

8700

8800

8900

9000

9100

9200

9300

9400

9500

9600

GR

GR

GR

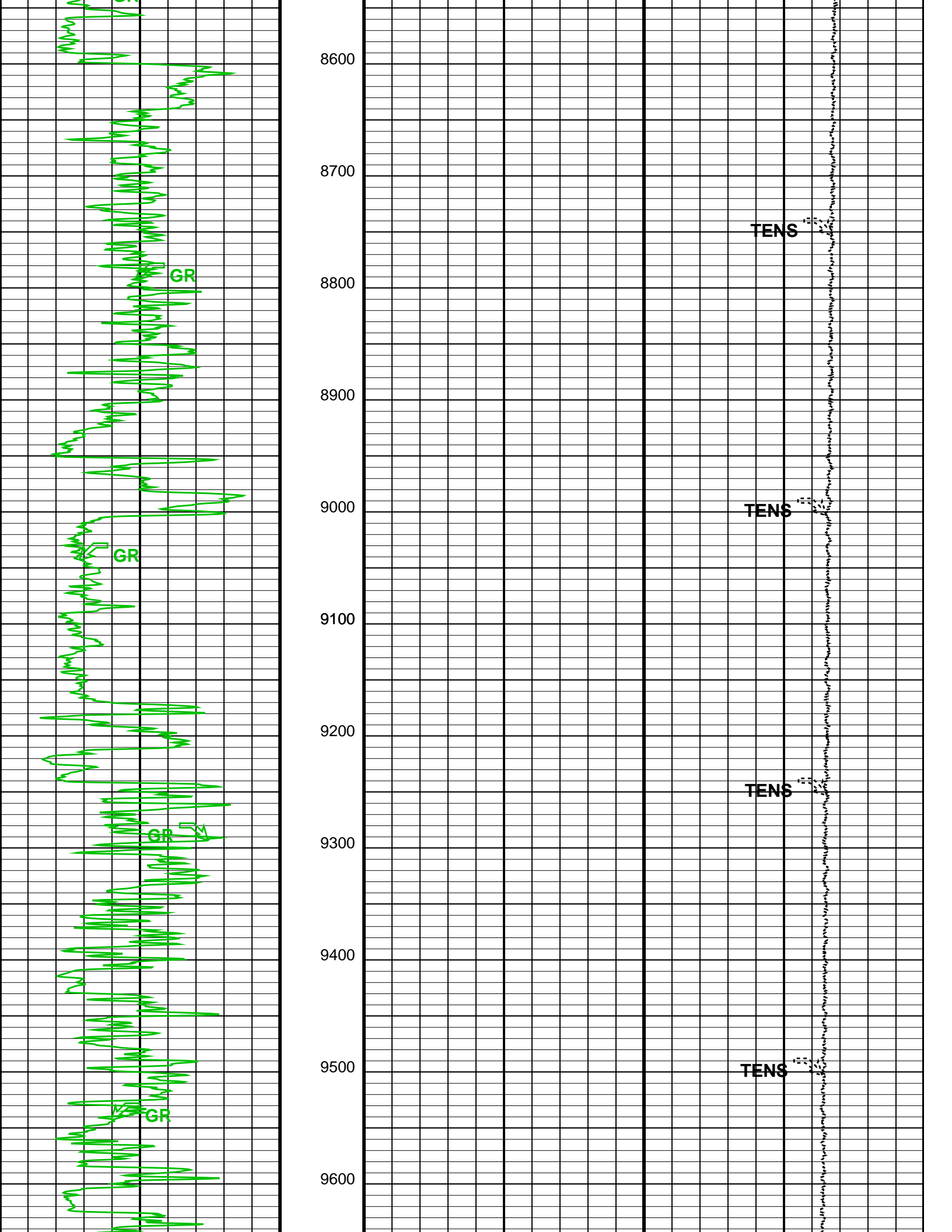
GR

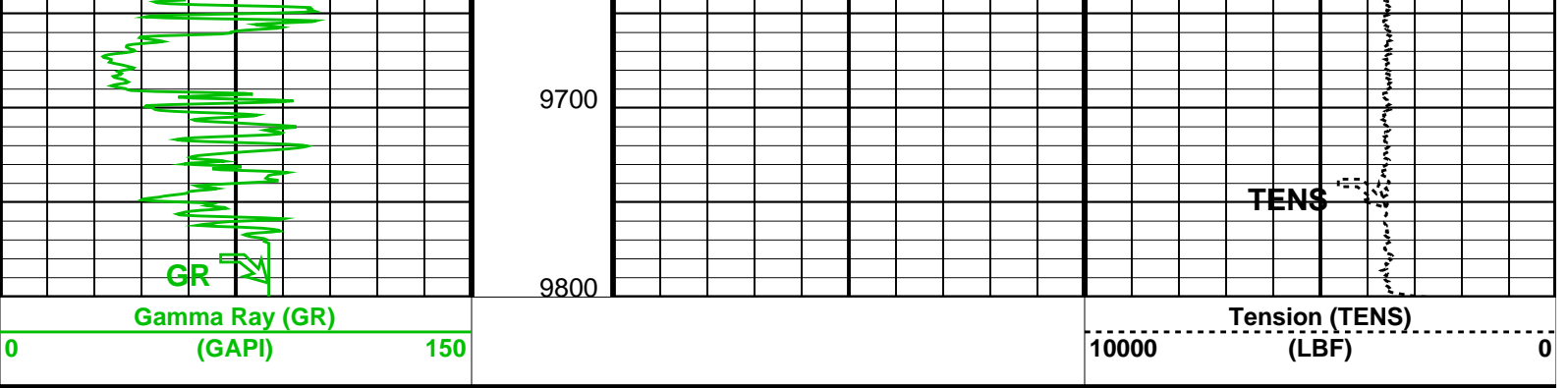
TENS

TENS

TENS

TENS





Parameters		
DLIS Name	Description	Value
System and Miscellaneous		
DO	Depth Offset for Playback	0.0 FT
PP	Playback Processing	NORMAL
Format: CORRELATION Vertical Scale: 1" per 100'		Graphics File Created: 16-Jun-2011 13:08

OP System Version: 17C0-154

USIT-D	17C0-154	HILTH-FTB	17C0-154
DTC-H	17C0-154		

Input DLIS Files					
USI_TLD_MCFL_CNL_020LUP	FN:29	16-Jun-2011 10:37	9800.0 FT	3999.0 FT	
Output DLIS Files					
DEFAULT	USI_TLD_MCFL_CNL_003PUP	FN:2	PRODUCER	16-Jun-2011 13:08	

Company: ExxonMobil Production Corp.

Schlumberger

Well: **PCU 296-5A9**
 Field: **Piceance Creek**
 County: **Rio Blanco**
 State: **Colorado**

IMAGING BEHIND CASING
 ULTRASONIC TOOL
 GAMMA RAY - CCLU