



Company: ExxonMobil Oil Corporation

Well: PCU 296 5A8

Field: Piceance Creek

County: Rio Blanco

State: Colorado

Country: United States

Section: 6 APIN: 051031124200

Township: 2S Rig Name: H & P 321

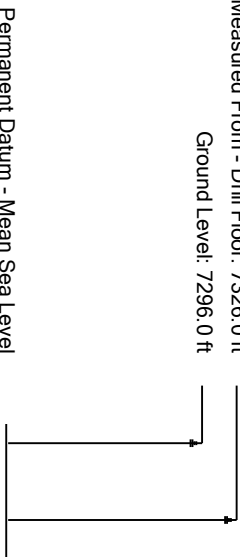
Range: 96W Rig Type: Flex 4

FL: NAD 27 Colorado State Planes, Northern Zone, US Feet

FL1: Latitude: N 39° 54' 43.168" Y: 222297 ftUS

FL2: Longitude: W 108° 11' 52.930" X: 1243257 ftUS

Log Measured From - Drill Floor: 7326.0 ft
Ground Level: 7296.0 ft



Permanent Datum - Mean Sea Level

Acquisition Dates: 03 Feb 11 to 04 Feb 11 Other Services:

Print Interval: 2/3/2011 8:00:00 AM to 2/4/2011 10:30:00 PM Directional Drilling

Index Types: Time Surveys

Index Scales: 2" / 3600 secs

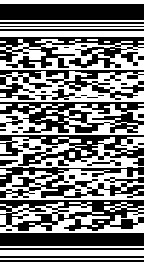
Depth Source: Driller's Depth

Depth Sensor: 3rd Party Depth

Conveyance: Drill Pipe

Print Type: Final

Spud Date: 29-Nov-2009



Disclaimer

THE USE OF AND RELIANCE UPON THIS RECORDED-DATA BY THE HEREIN NAMED COMPANY (AND ANY OF ITS AFFILIATES, PARTNERS, REPRESENTATIVES, AGENTS, CONSULTANTS AND EMPLOYEES) IS SUBJECT TO THE TERMS AND CONDITIONS AGREED UPON BETWEEN SCHLUMBERGER AND THE COMPANY, INCLUDING: (a) RESTRICTIONS ON USE OF THE RECORDED-DATA; (b) DISCLAIMERS AND WAIVERS OF WARRANTIES AND REPRESENTATIONS REGARDING COMPANY'S USE AND RELIANCE UPON THE RECORDED-DATA; AND (c) CUSTOMER'S FULL AND SOLE RESPONSIBILITY FOR ANY INFERENCE DRAWN OR DECISION MADE IN CONNECTION WITH THE USE OF THIS RECORDED-DATA.

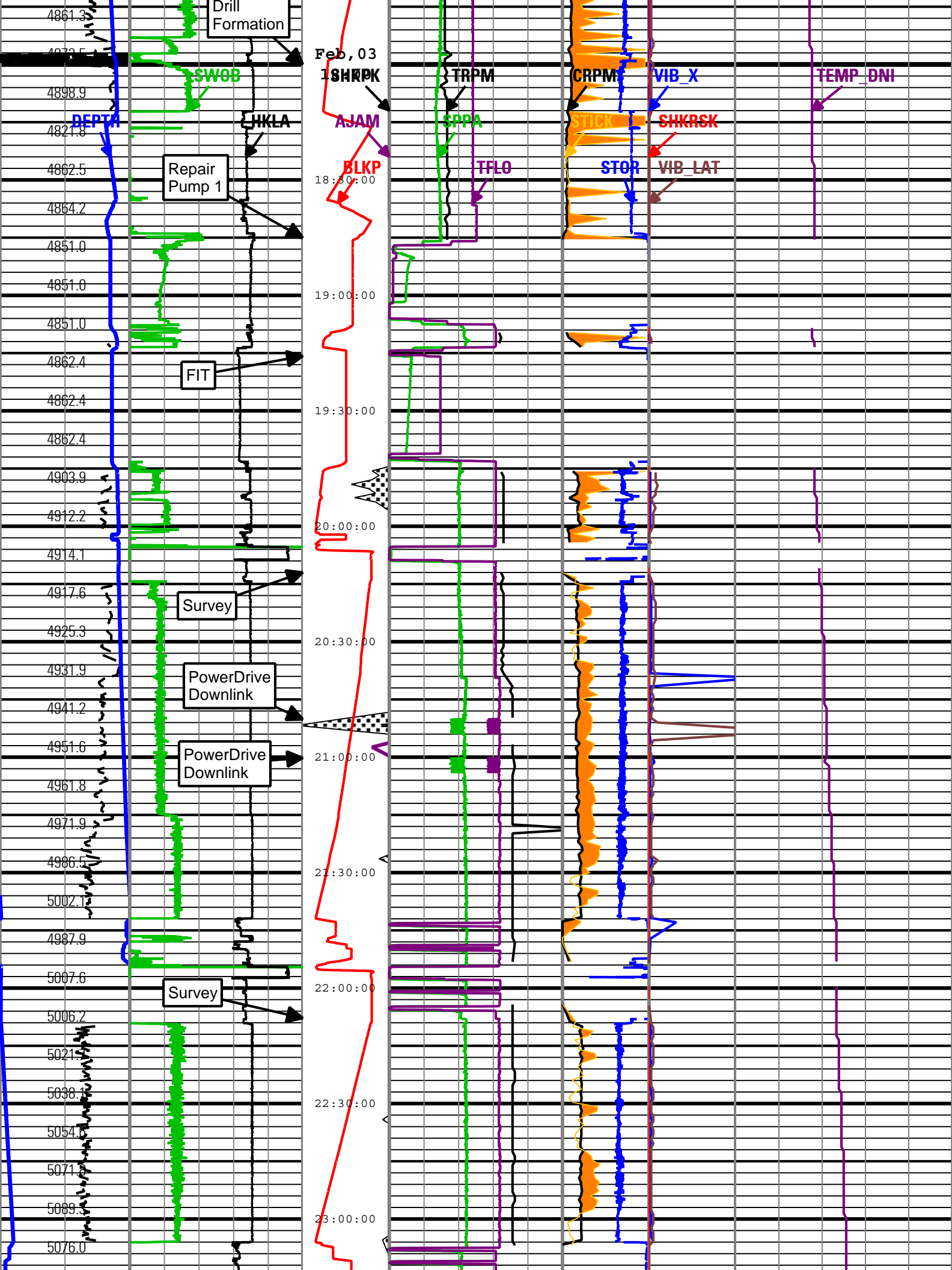
Content

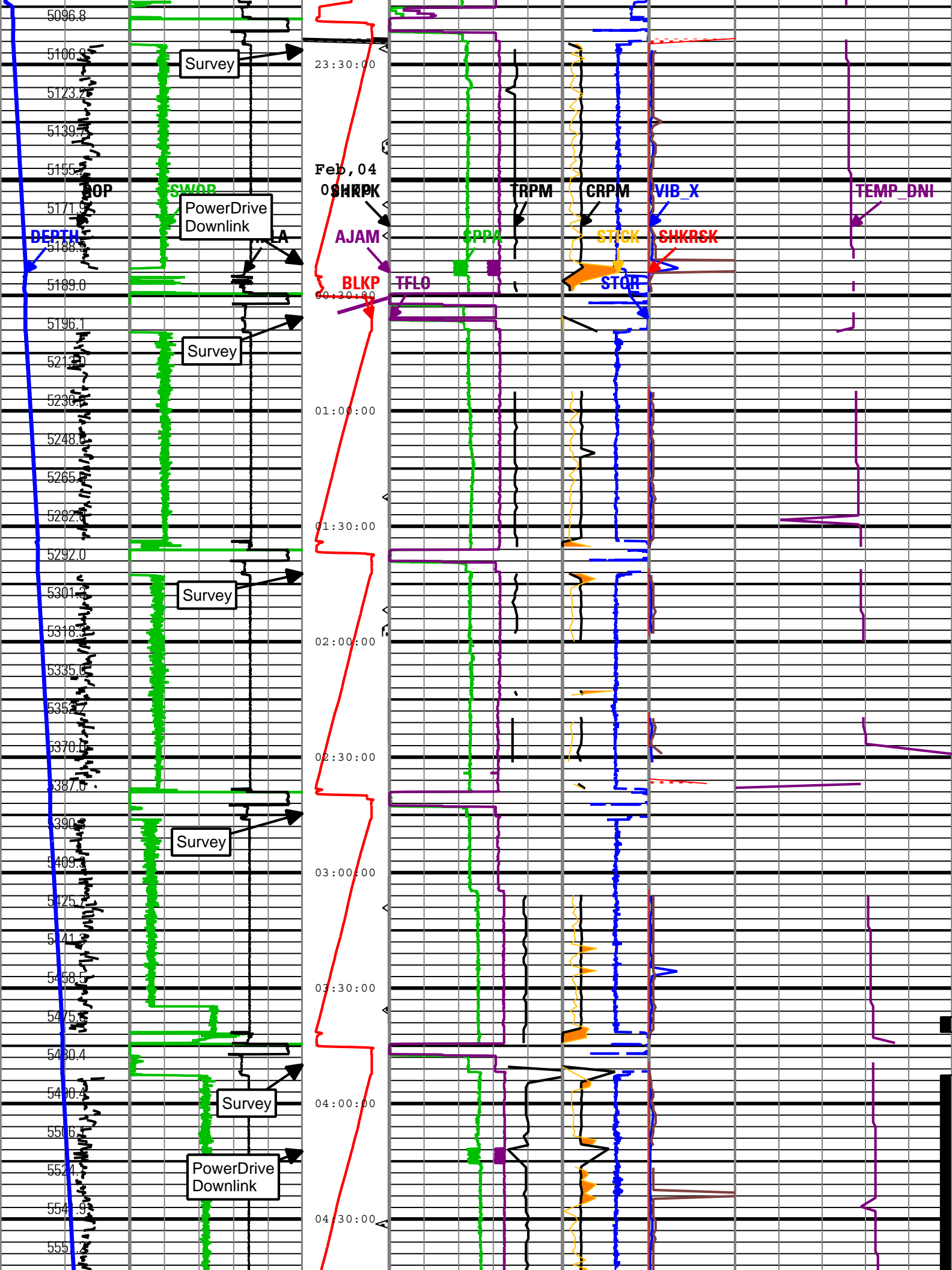
1. Header
2. Disclaimer
3. Contents
4. Run 1
 - 4.1 Integration Summary
 - 4.2 Software Version
 - 4.3 Composite Summary
 - 4.4 Log (PERFORM - Drilling Mechanics)
 - 4.5 Parameter Listing
5. Tail

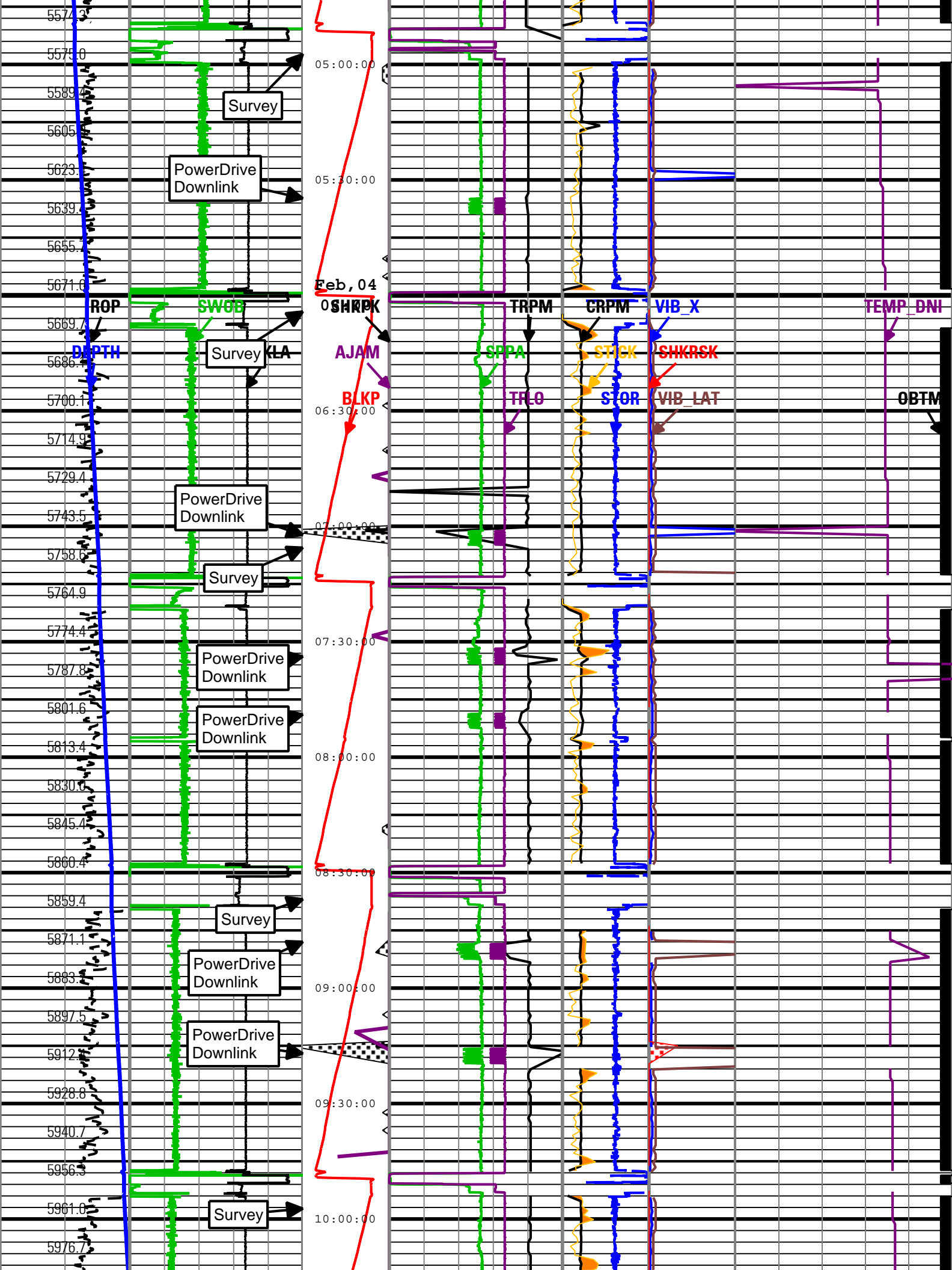
[illegible]

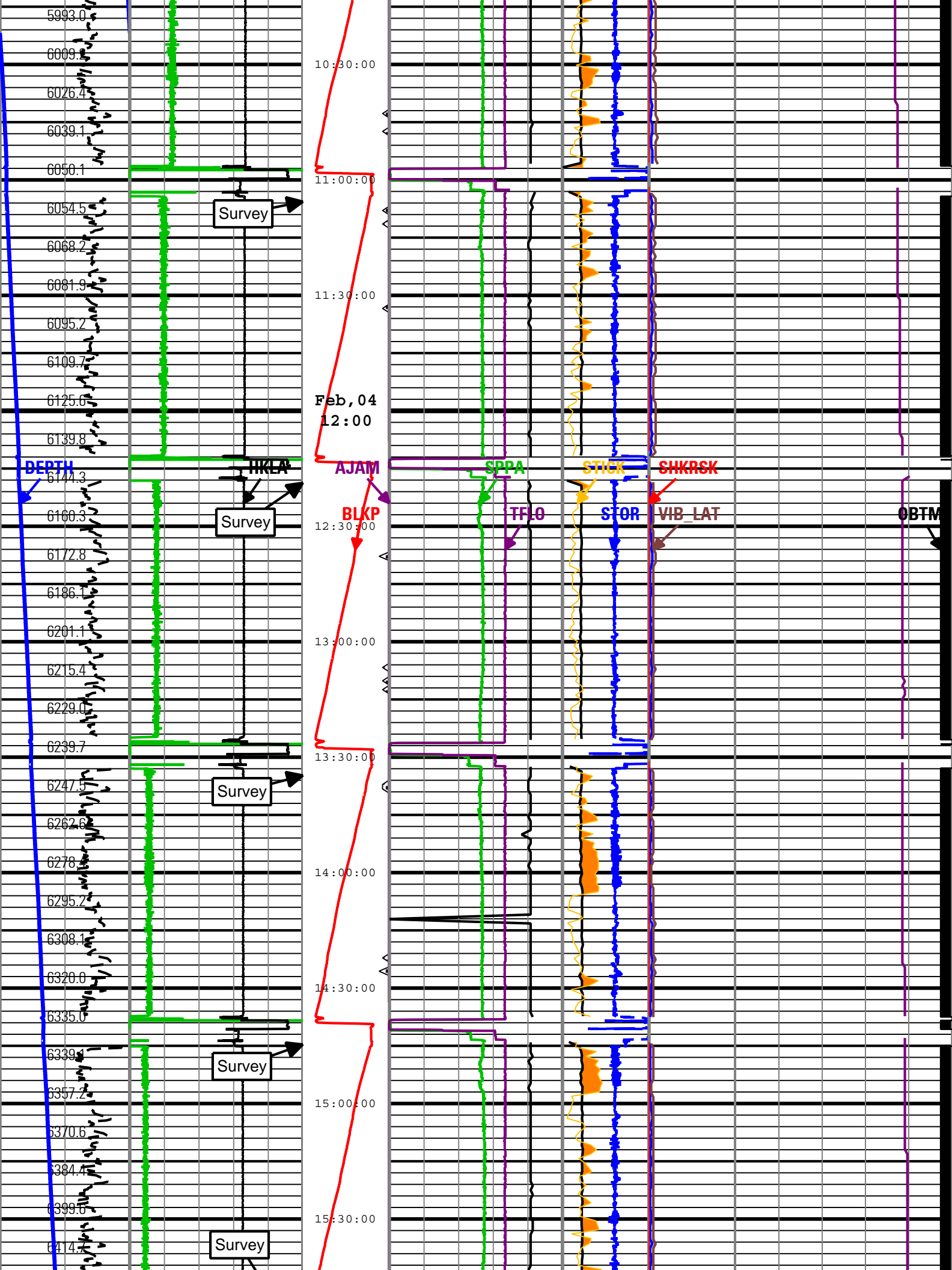
[illegible]

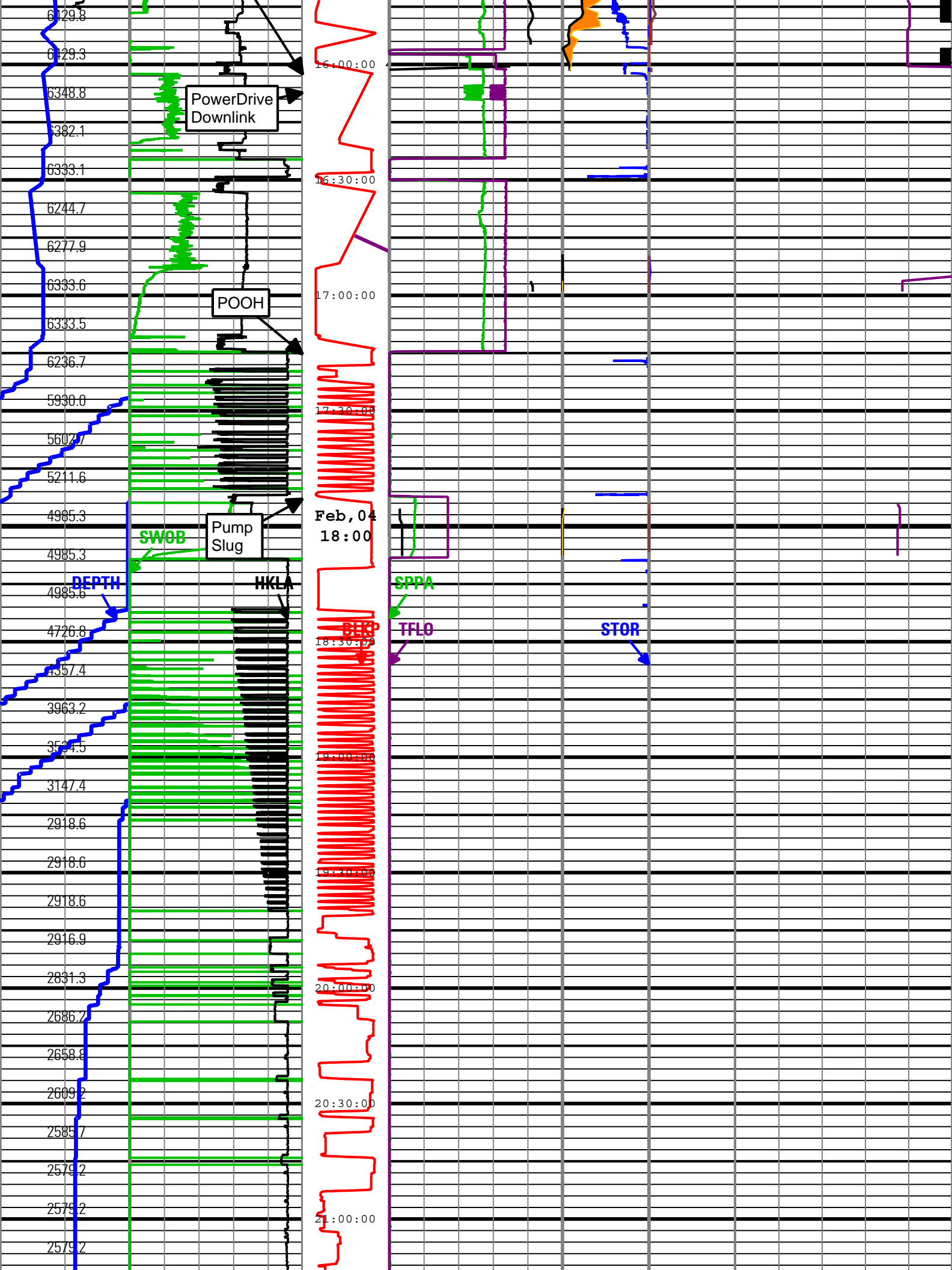


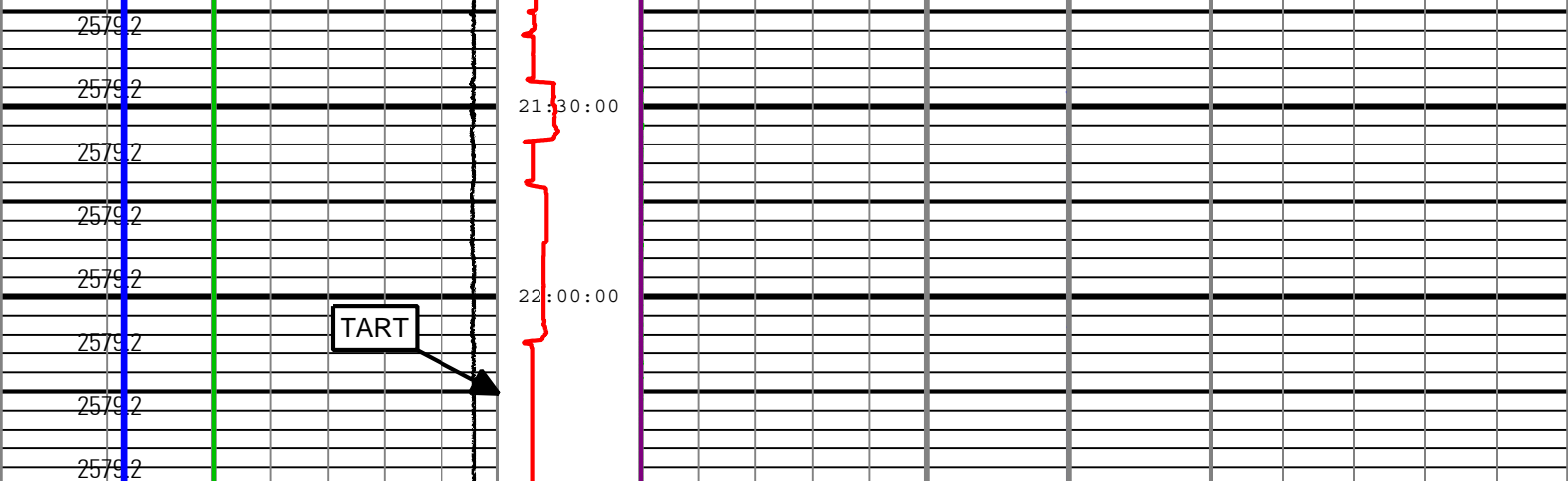












Rate of Penetration (ROP) RT 300 ft/h 0	Surface Weight On Bit (SWOB) RT 0 1000 lbf 50	Shock Peak (SHKPK) M10675 RT 200 gn 0	MWD Turbine Rotation Speed (TRPM) M10675 RT 1500 c/min 4500	High SticknSlip Collar Rotational Speed (CRPM) M10675 RT 0 c/min 400	Shock Risk RMS Vibration, X-Axis (VIB_X) M10675 RT 0 gn 10	On Bottom Direction and Inclination Sensor Temperature (TEMP_DNI) M10675 RT 50 degF 175
Depth Index (DEPTH) ft 0 ft 1000	Average Hookload (HKLA) RT 500 1000 lbf 0	Number of Anti-Jams Detected (AJAM) M10675 RT 5 0	Standpipe Pressure (SPPA) RT 0 psi 5000	Stick Slip Indicator (STICK) M10675 RT 0 c/min 400	Shock Risk (SHKRSK) M10675 RT 0 3	
		Height of block above rig floor (BLKP) RT 0 ft 150	Total flow rate of all active pumps (TFLO) RT 0 gal/min 1000	Surface Torque (STOR) RT 40 0 1000 ft.lbf	Transverse RMS Vibration (VIB_LAT) M10675 RT 0 gn 10	


Description: TeleScope Drilling Mechanics Time RT Format: Log (PERFORM - Drilling Mechanics) Index Scale: 2 in per 3600 s Index Type: Time Creation Date: 14-Feb-2011 06:58:48

Channel Processing Parameters				
Parameter	Description	ToolPath	Value	Unit
DEPTH_SEL	Depth Selection Parameter	DNMSESSION	Driller's Depth	

Tool Control Parameters				
Parameter	Description	ToolPath	Value	Unit
OFFBTM_TH	Threshold for deciding whether the bit is off bottom	DnMWorkflow	Time Zoned	ft

Time Zone Parameters			
Parameter	Value	Start	Stop
OFFBTM_TH	0	03-Feb-2011 08:00:00	04-Feb-2011 03:37:28
OFFBTM_TH	0.5	04-Feb-2011 03:37:28	04-Feb-2011 22:30:00

Company:	ExxonMobil Oil Corporation
Well:	PCU 296 5A8
Field:	Piceance Creek
County:	Rio Blanco
State:	Colorado



Country:

United States



Schlumberger

PERFORM - Drilling Mechanics

2 in / hr Time Based

Real Time Log