



Baker Atlas

RESERVOIR PERFORMANCE MONITOR

File No:	Company	EXXONMOBIL PRODUCTION COMPANY
CHC38009	Well	PCU 296-5A9
API No.	Field	PICEANCE CREEK
06103112410000	County	RIO BLANCO
	State	COLORADO
Location:		Other Services
SHL: 736' PUL & 528' PUL		BOND
SEC: 5	TWP: 25	RGE: 98W
Permanent Datum	G.L.	Elevation
Log Measured From	K.B.	30.2 ft
Orill Measured From	KELLY BUSHING	Above P. D.
		Elevations
		KB 7338.2 ft
		DF 7338.2 ft
		GL 7308 ft

Date	21-JULY-2011	
Run	CWE	
Service Order	575376	
Depth Driller	13675 ft	
Depth Logger	13810 ft	
Bottom Logged Interval	13810 ft	
Top Logged Interval	9672 ft	
Time Started	04:00	
Time Finished	12:00	
Operator Rig Time	8 HRS	
Type of Fluid in Hole	WATER	
Fluid Density	N/A	
Fluid Salinity	N/A	
Fluid Level	PULL	
Logged Cement Top	N/A	
Wellhead Pressure	0 psi	
Maximum Hole Deviation	N/A	
Nominal Logging Speed	10 rpm	
Maximum Recorded Temperature	N/A	
Reference Log	BAKER ATLAS/BOND	
Reference Log Date	7-21-11	
Equipment	4271	CRWD JCT,00
Recorded By	TIM KAUTT	
Witnessed By	MR. JIM PETERSON	

- FOLD HERE

In making interpretations of logs, our employees will give the customer the benefit of their best judgement. But since all interpretations are opinions based on inferences from electrical or other measurements, we cannot, and we do not guarantee the accuracy or correctness of any interpretation. We shall not be liable or responsible for any loss, cost, damages, or expenses whatsoever incurred or sustained by the customer resulting from any interpretation made by any of our employees.

Borehole Record		
Bit Size	From	To
9.875 in		
8.125 in		

Casing Record				
Size	Weight	Grade	From	To
7 in	28 lbm/ft	P-110	SURFACE	10019 ft
4.5 in	15.1 lbm/ft	P-110	SURFACE	13675 ft

Remarks
Log is correlated to The Baker Atlas Bond log dated 7-21-11
The crew of 4271 Thanks You.

Equipment Data				
Run	Trip	Tool	Series Number	Serial Number

1	1	RPM	8281FA	10460082	FREE
1	1	RPM	8281PA	11802753	FREE
1	1	RPM	8281EA	10273848	FREE
1	1	GAMMA RAY	2812LA	11701636	FREE
1	1	CCL	8248EA	10387150	FREE
1	1	PCM	8250EA	11796989	FREE

MAIN SECTION *IN PNC 3-D MODE*

SPL PROCESSING

MEASUREMENT TYPE	PARAMETER	VALUE	UNITS	TOP	BOTTOM
PNC Porosity	Borehole	Cased		9970.250	13286.750
PNC Porosity	Borehole Size	9.875	Inch	9970.250	10009.000
PNC Porosity	Borehole Size	6.125	Inch	10009.000	13286.750
PNC Porosity	Casing Size	7.000	Inch	9970.250	10009.000
PNC Porosity	Casing Size	4.500	inch	10009.000	13286.750
PNC Porosity	Gas Filled	Non Gas Filled		9970.250	10009.000
PNC Porosity	Gas Filled	Non Gas Filled		10009.000	13286.750
PNC Porosity	Matrix	Sandstone		9970.250	13286.750

DEPTH OFFSETS (for Acquired Curves)

SERIES	DEPTH OFFSET	ACQUIRED CURVES					
8248EA	-14.478	FLTM					
8248EA	-12.478	CCL	CHV				
2812LA	-9.928	GR					
8281XA	-0.662	HVC3Q0	SEQ3	AMA3	AML3	BKX	CXS
		CPT3Q0	CPT3Q2	CPT3Q3	CPT3Q4	ET3	IXS
		MCS3	MCS3Q0	QCAL3	RGN3	RICK	SDA3
		SDL3	SGA3	SGL3	STA3	XS	ASPEC3
		AMB3	AMF3	CHF3	IXSC	IXSN	RAT023
		RICKC	RIN13C	RIN23	RIN23C	SD3D	SG3D
		SGB3	SGF3	WDTH3	CKSR	IXSR	XSR
		RICKR					

B281XA

-0.250

BKL	CHF2	CLS	CPT2Q0	CPT2Q2	CPT2Q3
CPT2Q4	ET2	ILS	LS	MCS2	MCS2Q0
QCAL2	RGN2	RICL	RONE23	RTWQ23	SDA2
SDL2	SGA2	SGB2	SGF2	SGK2	SGL2
STA2	ASPEC2	ILSC	ILSN	WDTH2	RICLC
CLSR	ILSR	LSR	RICLR		
GPRS	HVC100	WV	SEQ	SED1	AMA1
AMB1	AWE1	AMF1	AML1	BKS	CHF1
CSS	COORB	CORF	CPT1Q0	CPT1Q2	CPT1Q2A
CPT1Q2B	CPT1Q2C	CPT1Q3	CPT1Q4	CPT1Q5	ET1
G1	G2	GE1S	GE2S	ISS	MCS1
MCS1Q0	QA1	QCAL1	QM1	RATO	RAT013
RBOR	RGN1	RICS	RIN	RONE	RPOR
RTW0	RIN13	RONE13	RTW013	SALB	SC1
SDA1	SDL1	SGA1	SGB1	SGBC	SGE1
SGF1	SGFC	SGK1	SGL1	SS	SS2
STA1	PD1S	PD2S	PD3S	MD1S	MD2S
MD3S	DG1S	DG2S	DG3S	PD1M	PD2M
PD3M	MD1M	MD2M	MD3M	DG1M	DG2M
DG3M	MVS	WA	WVM	FILV	IAM
TA	PVM	PVS	IAS	SSTAT	QPD1
QPD2	QPD3	QMD1	QMD2	QMD3	QDG1
QDG2	QDG3	QMA	QTA	QFILV	QMV
QPV	QIA	DERR	DCNT	QPK1	QSA1
PKS1	ASPEC1	HOC	FE2XC	ISSC	RINC
ISSN	RDEN	WDTH1	RICSC	CSSR	G1R
G2R	ISSR	SSR	SS2R	RATOR	RAT013R
RBORR	RICSR	RINR	RIN13R	RONER	RPORR
RTWOR					
SYSTEM		TEN	TTEN		

B281XA

0.000

SYSTEM

0.000

TEN TTEN

Created by : MIXED

Plotted by : PlotMgr, v5.4.5D4

Company : EXXONMOBIL PRODUCTION COMPANY

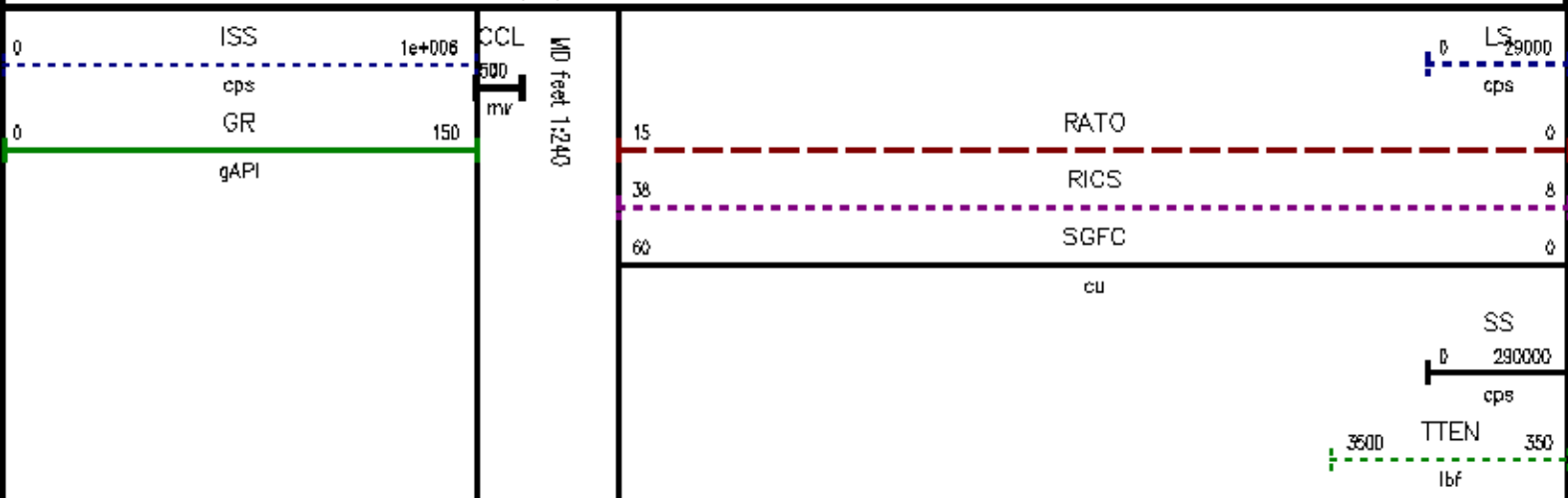
Well : PCU 286-549

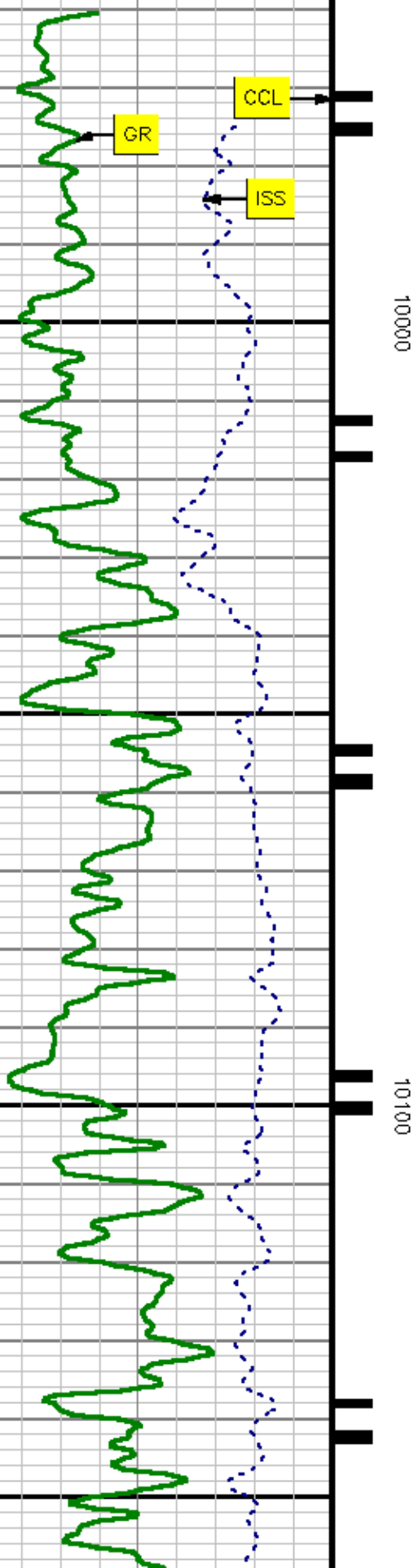
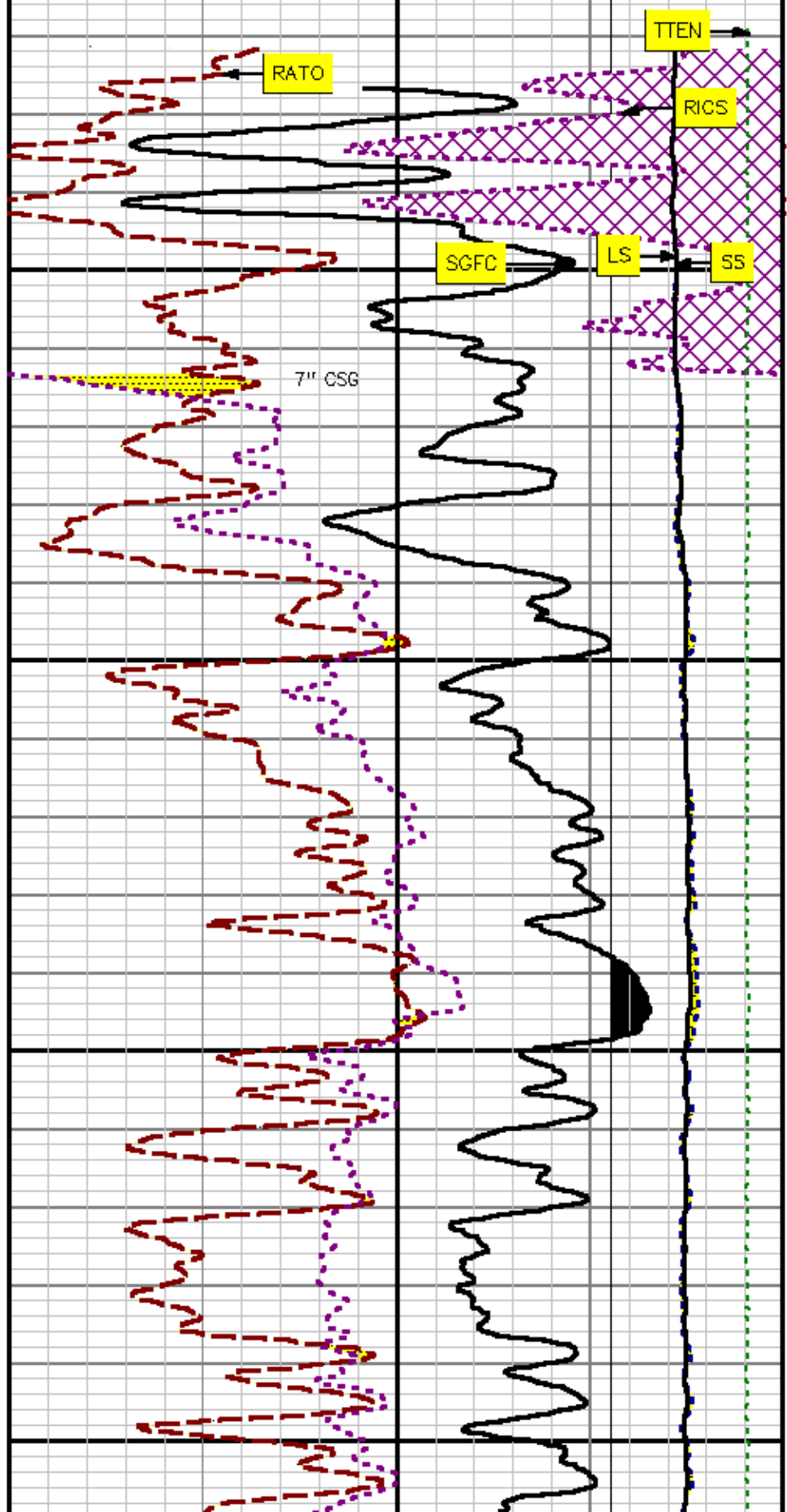
File Name : d:\well\data\q9rpm\main1.xtf

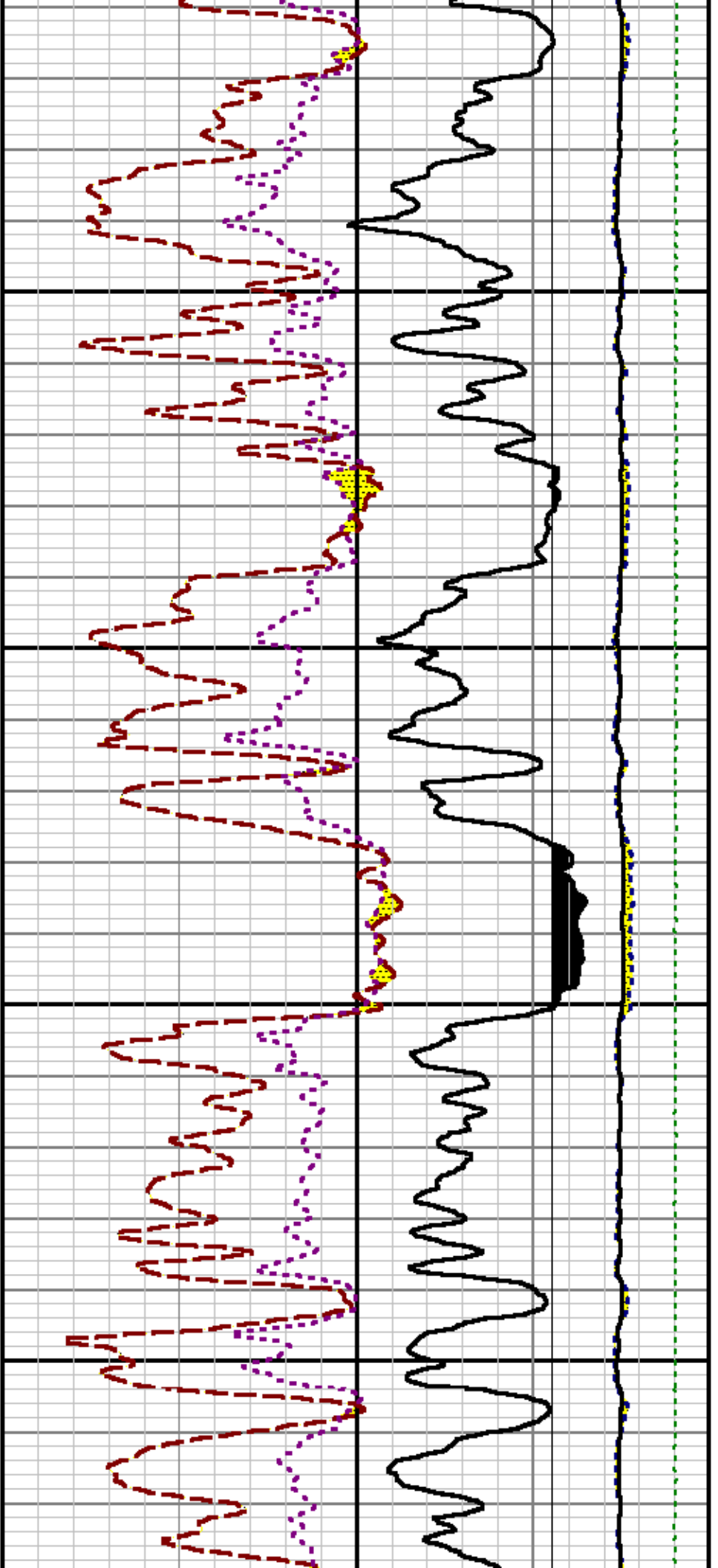
Mode : PlotMgr 5.4.5D4

Interval : 9940.00 - 13632.00 feet UP

Created : 7/21/2011 7:28:41 AM

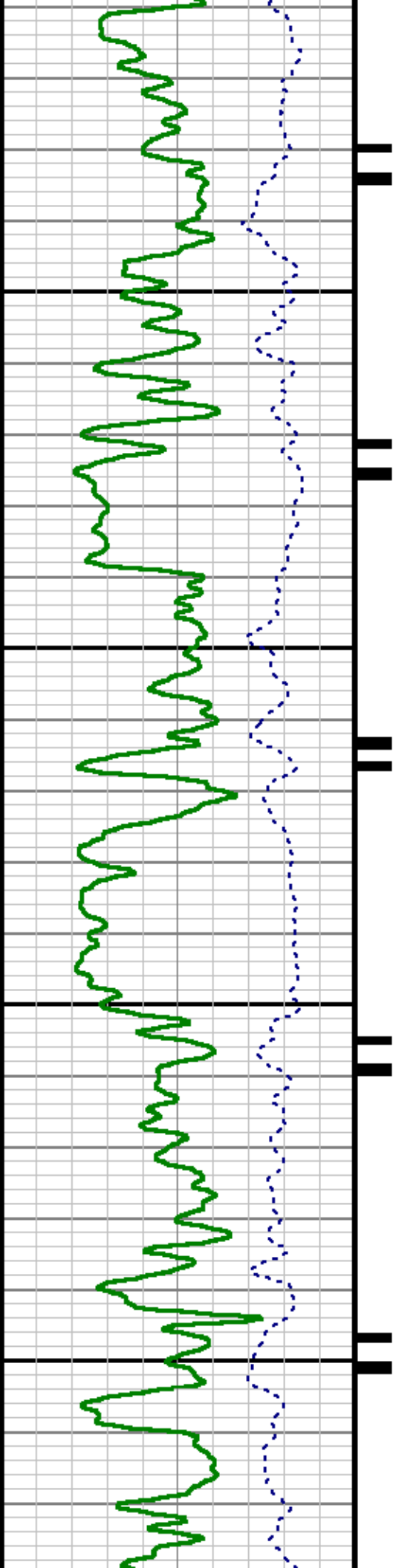


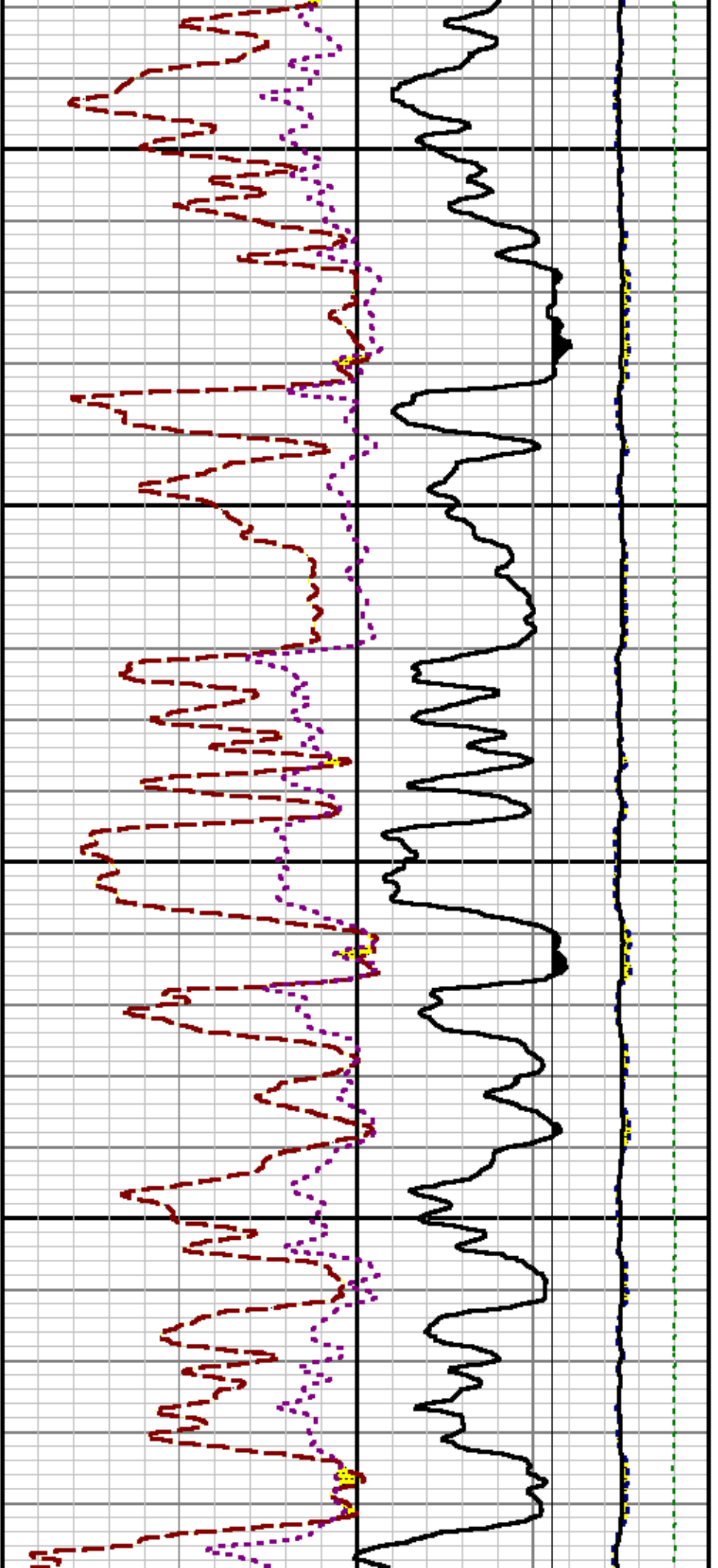




10200

10300

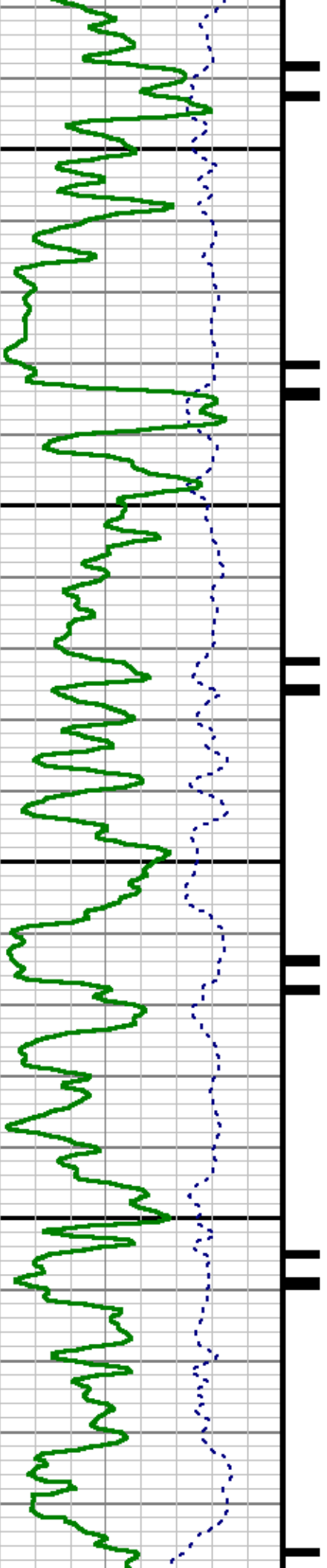


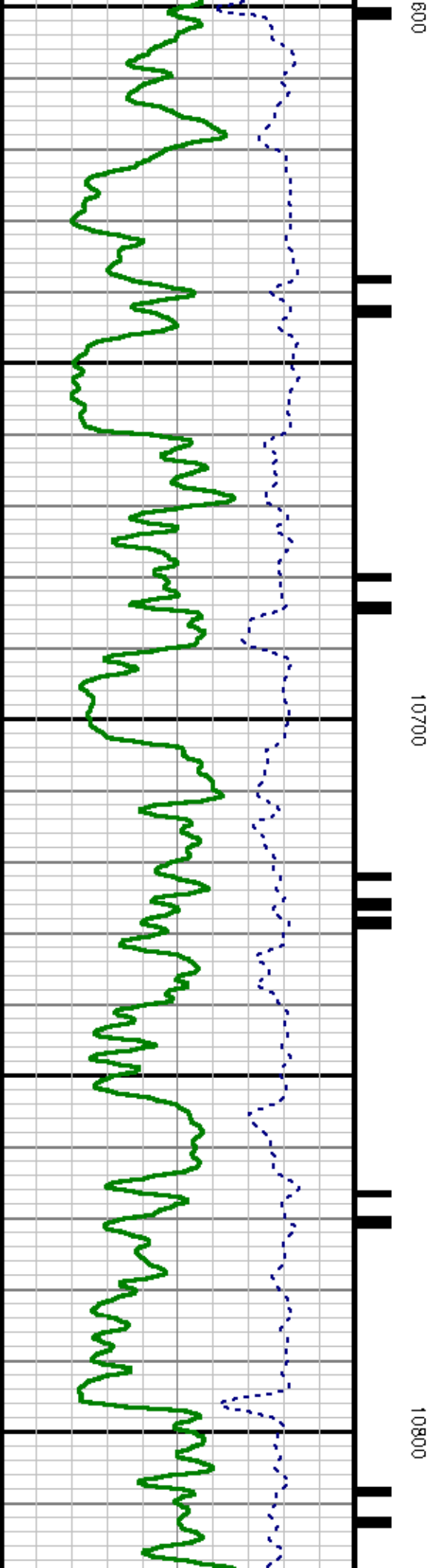
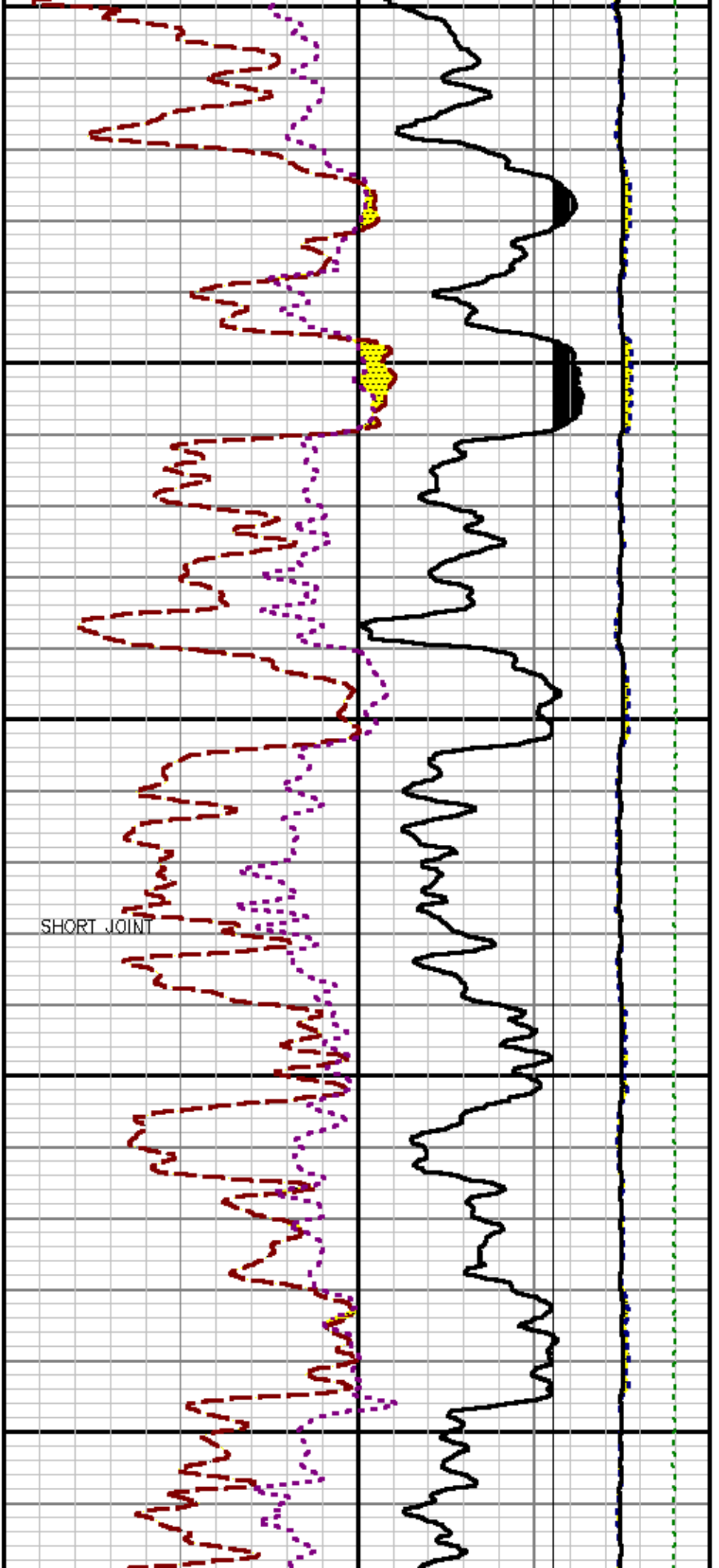


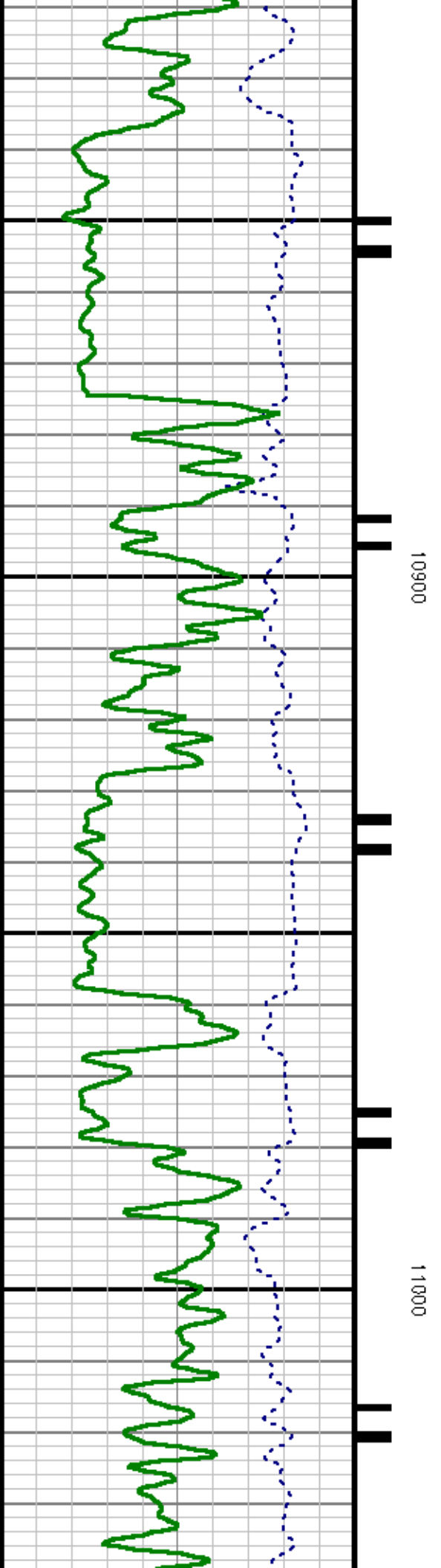
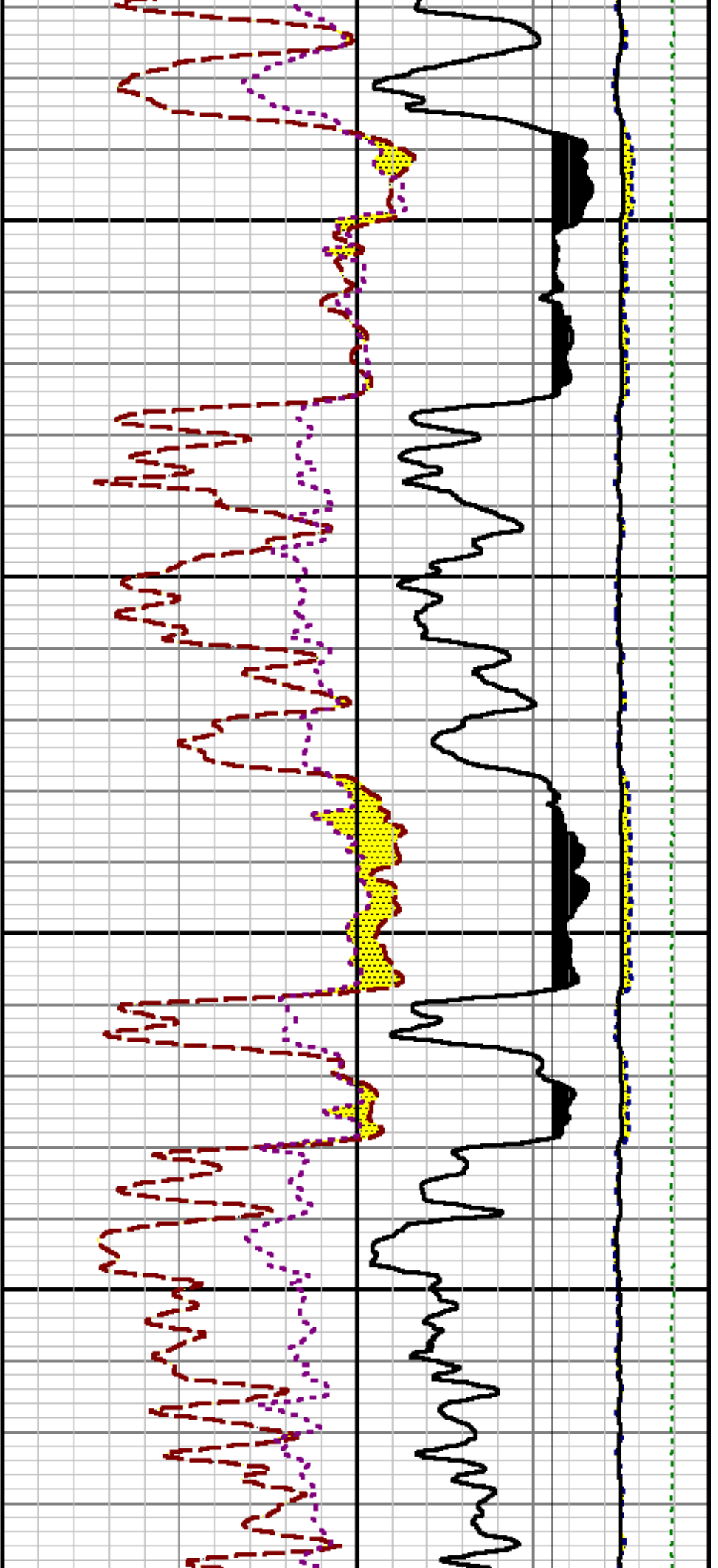
10400

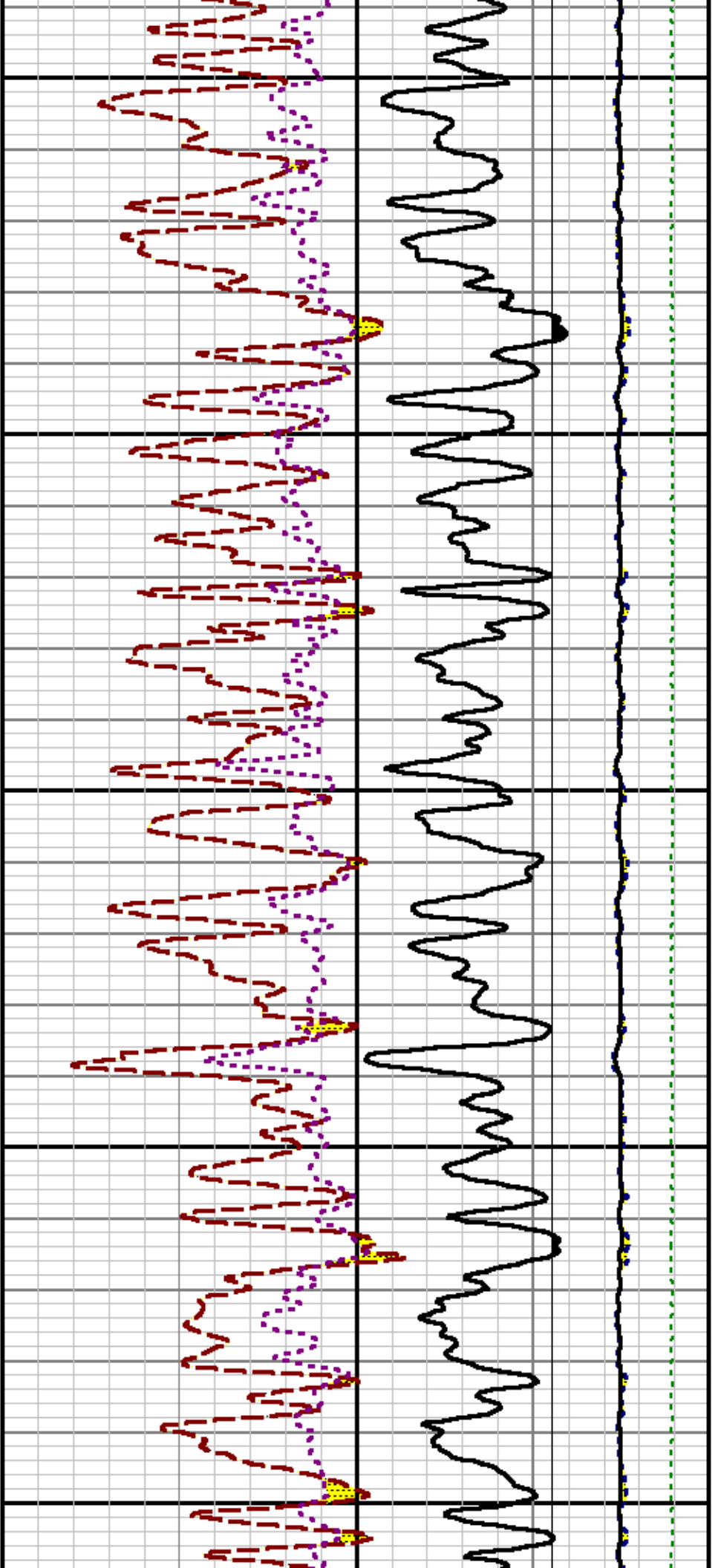
10500

10



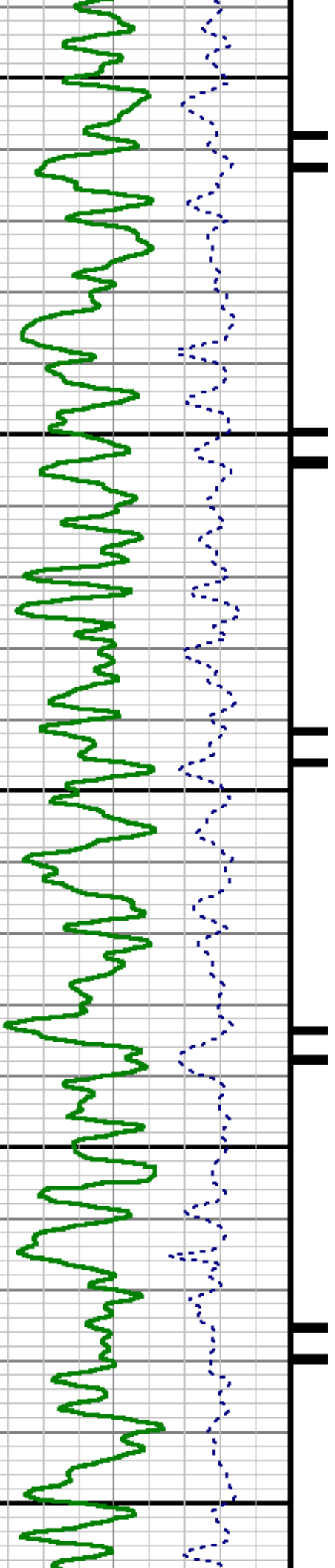


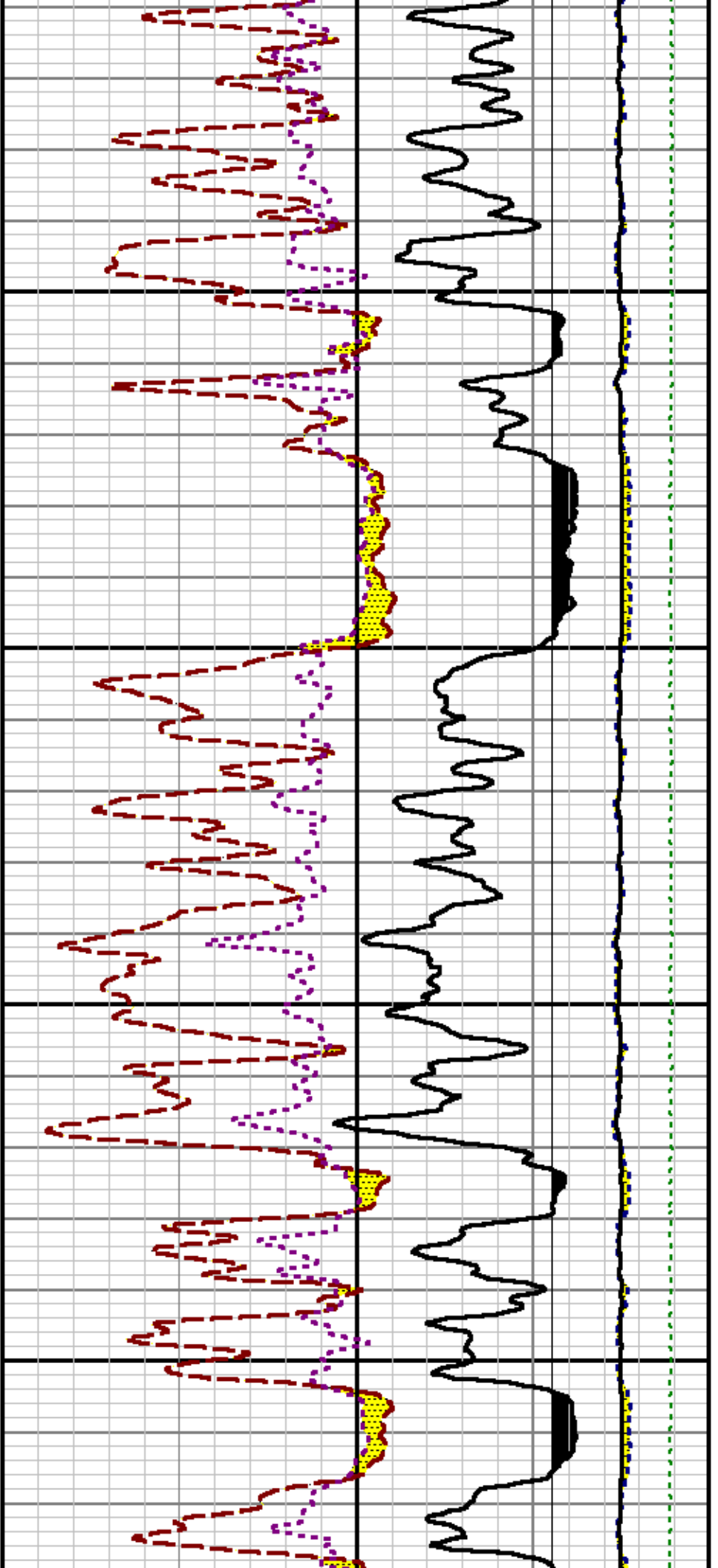




11100

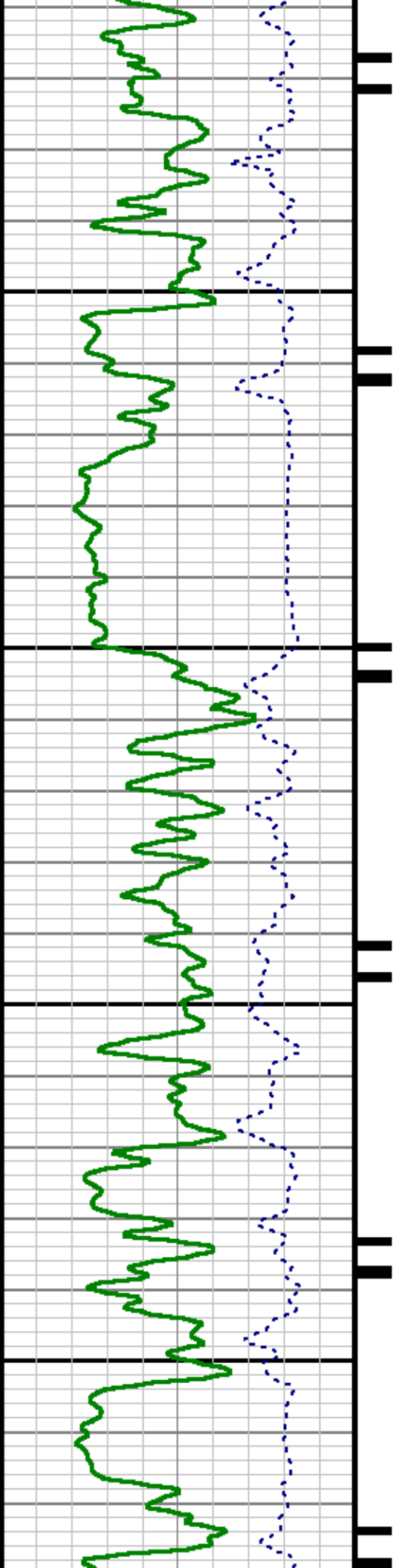
11200

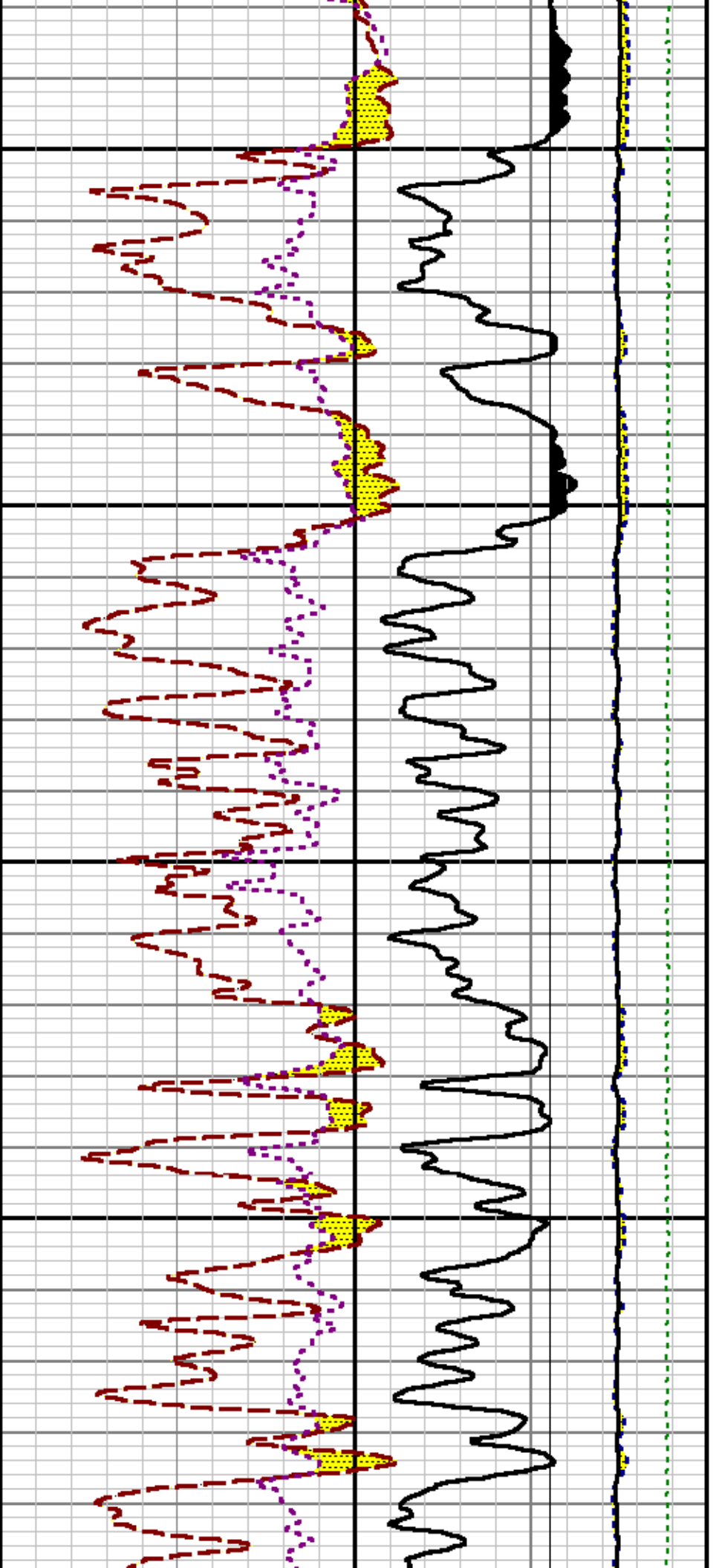




11300

11400

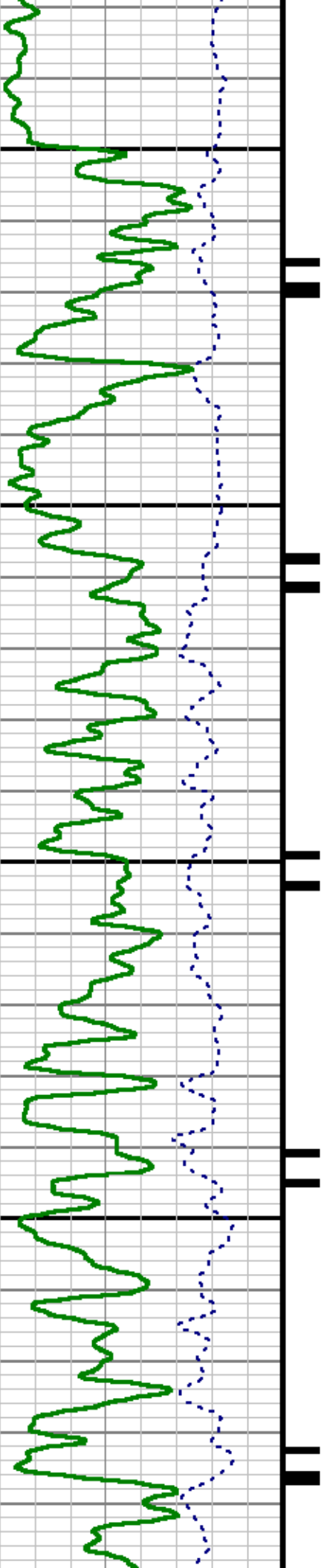


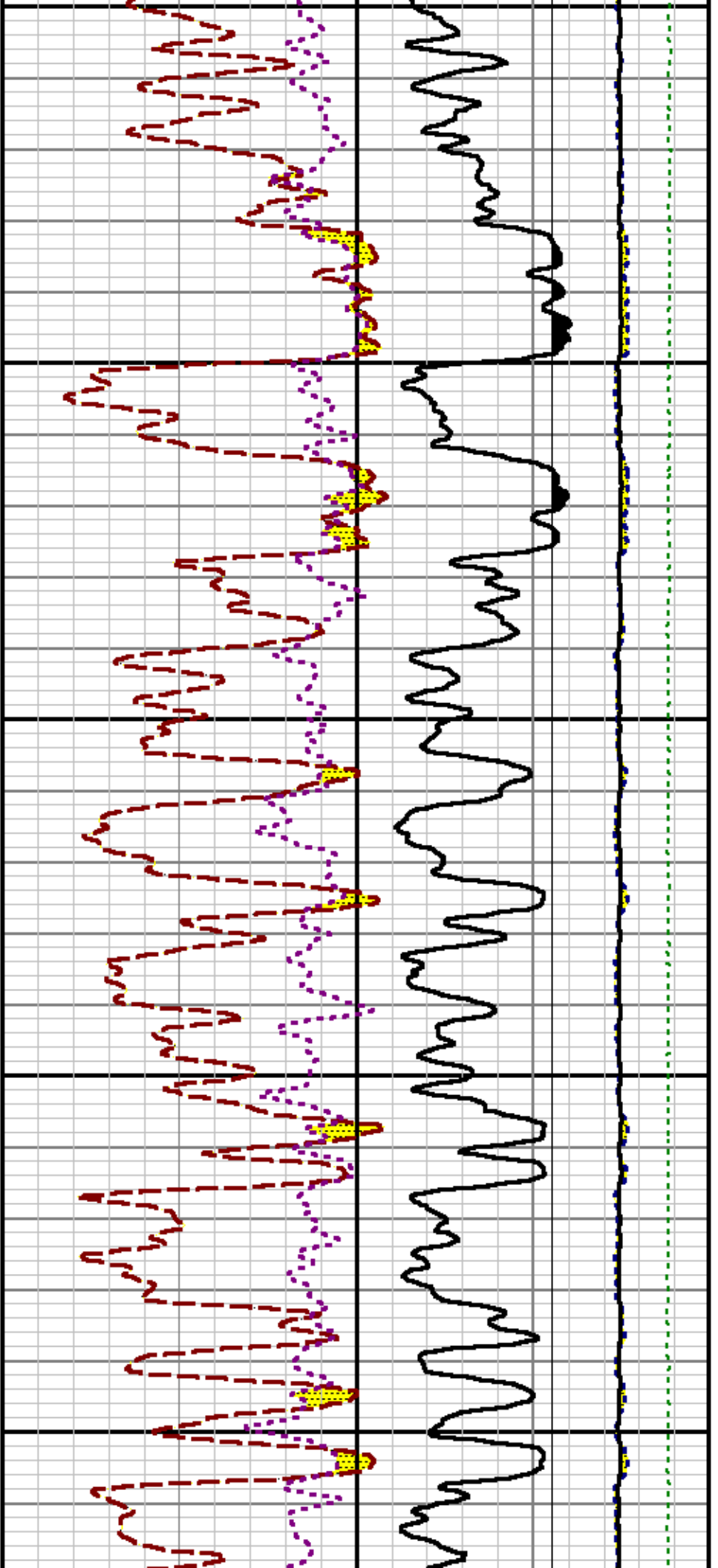


11500

11600

11

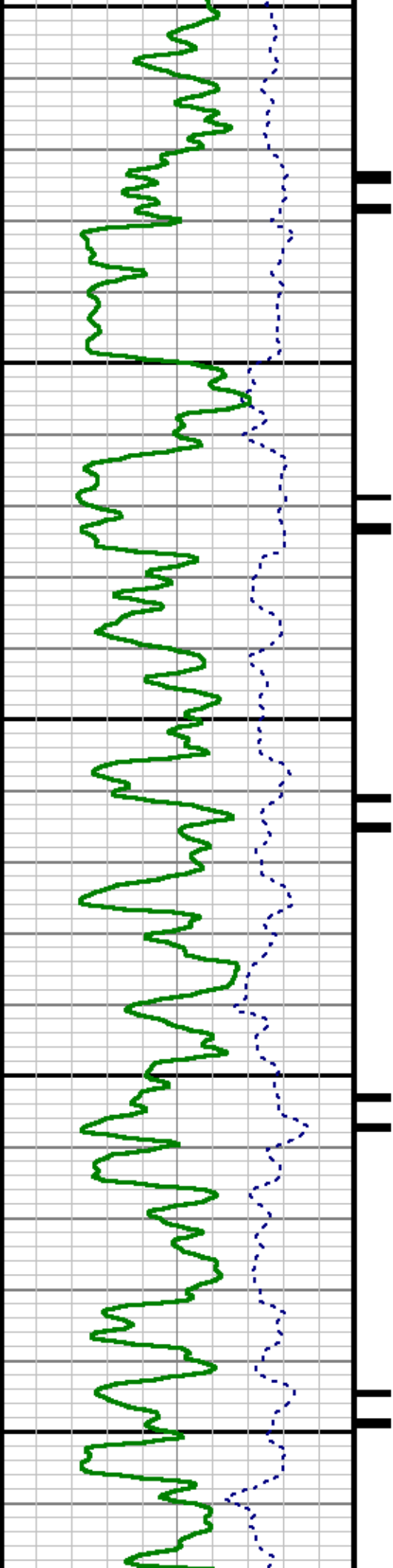


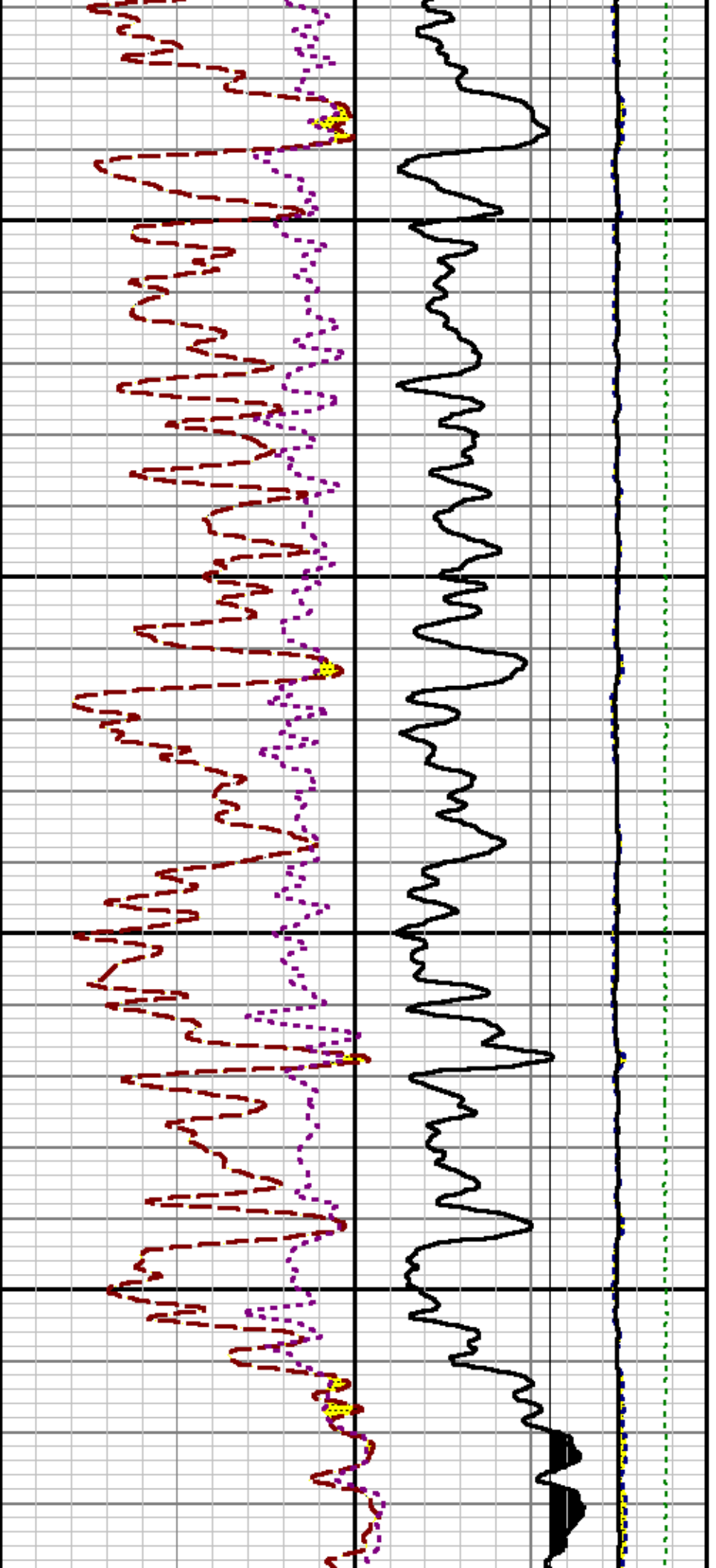


700

11800

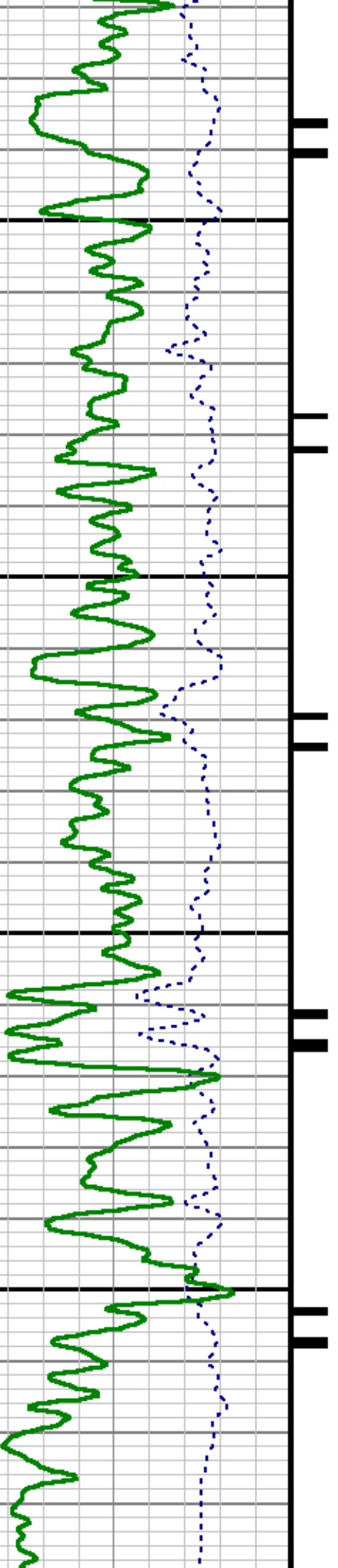
11900

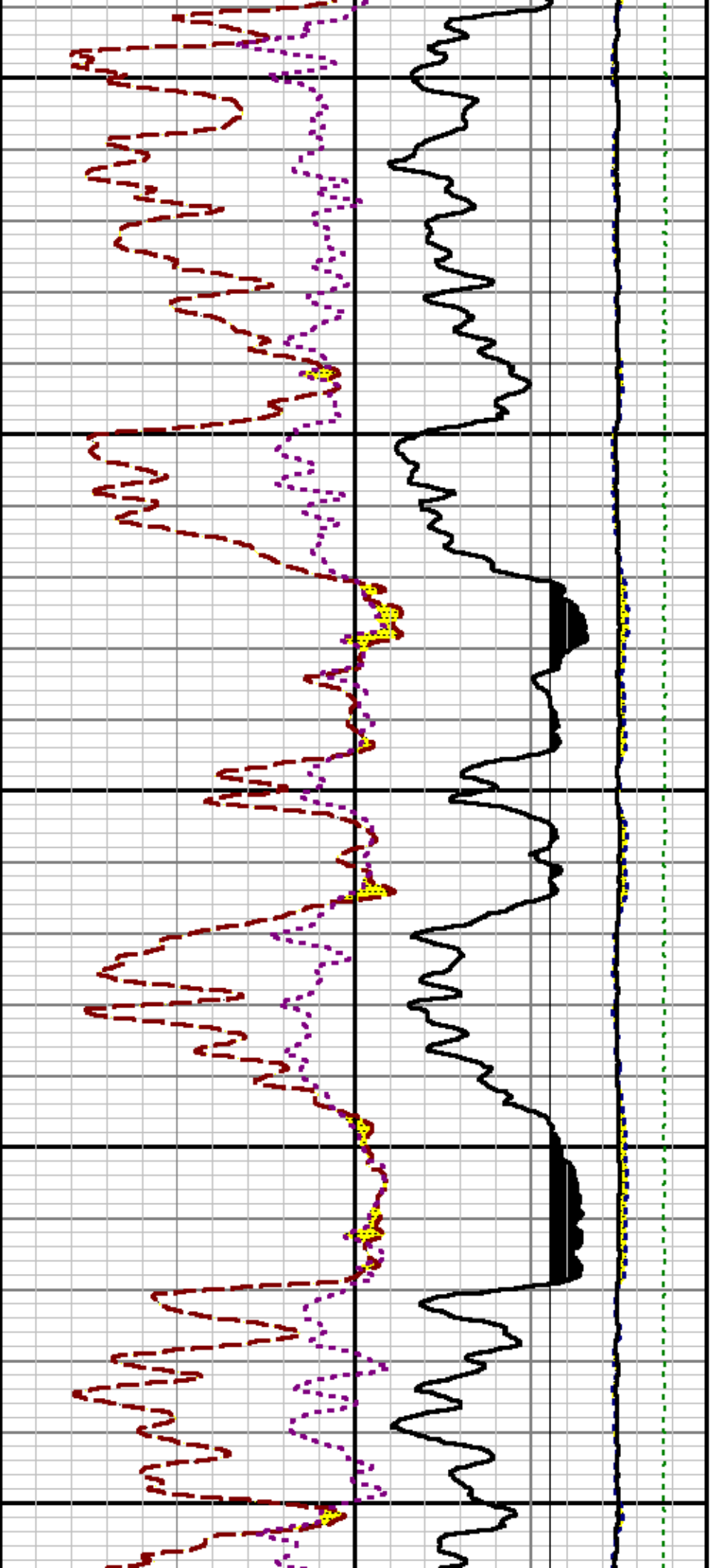




12000

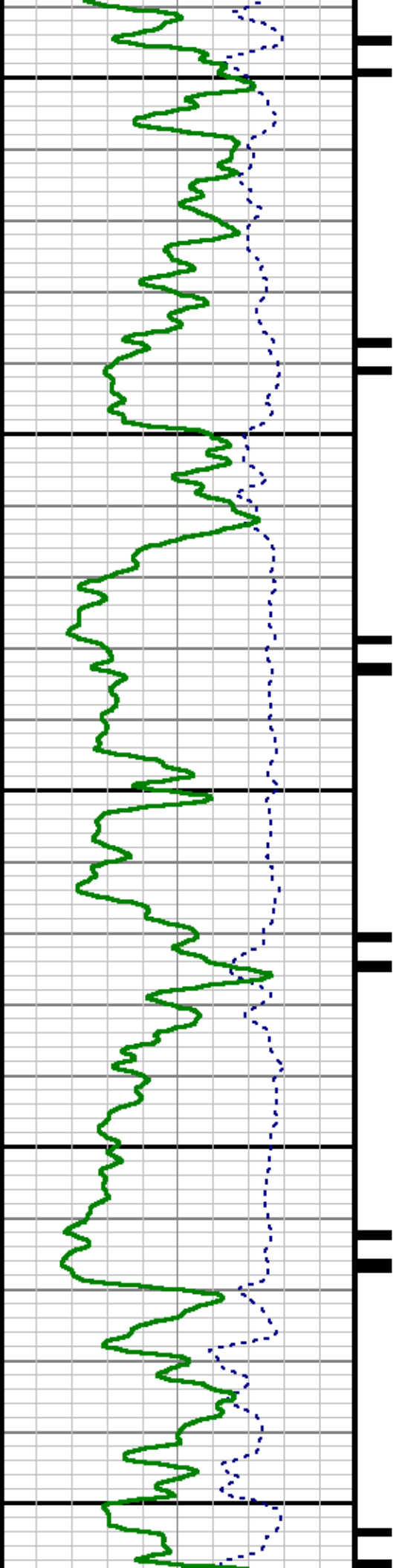
12100

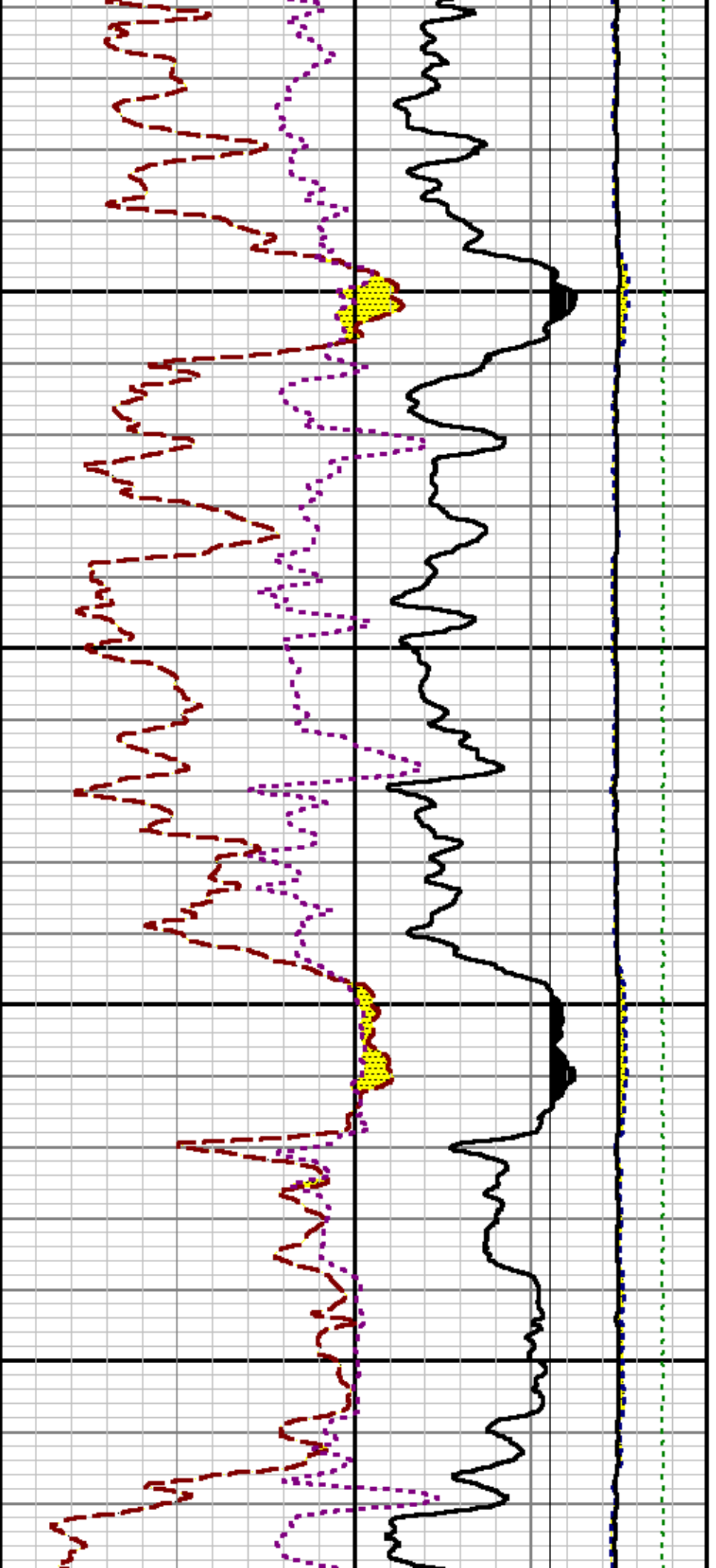




12200

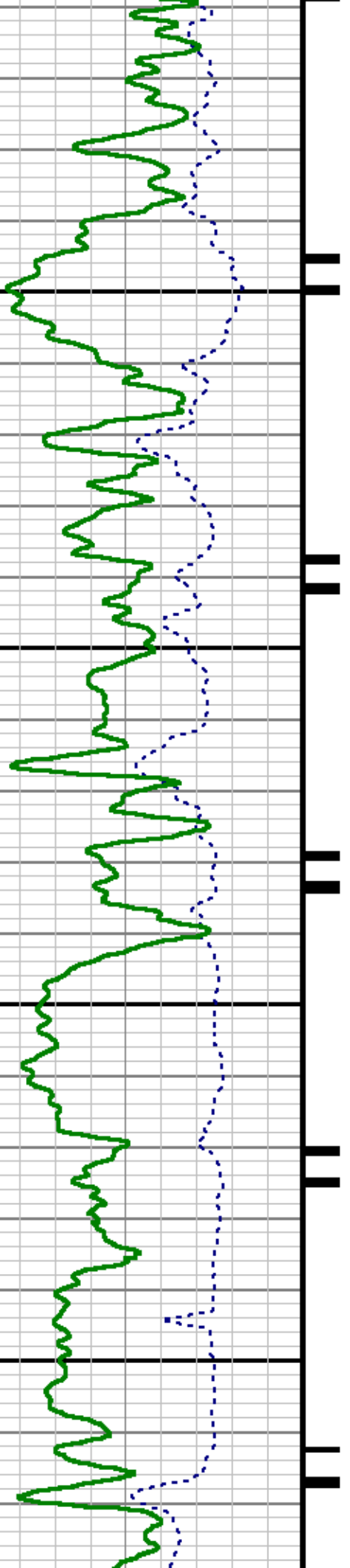
12300

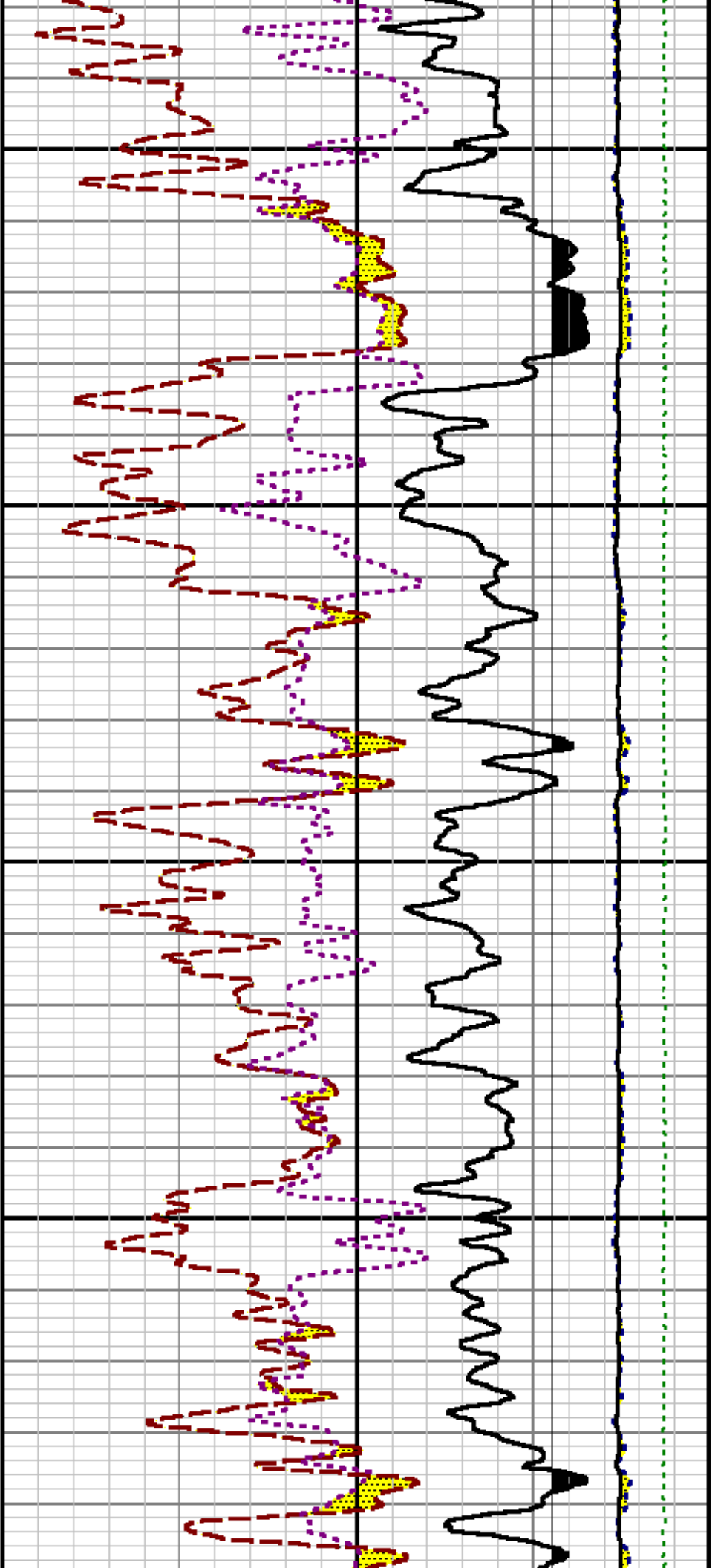




12400

12500

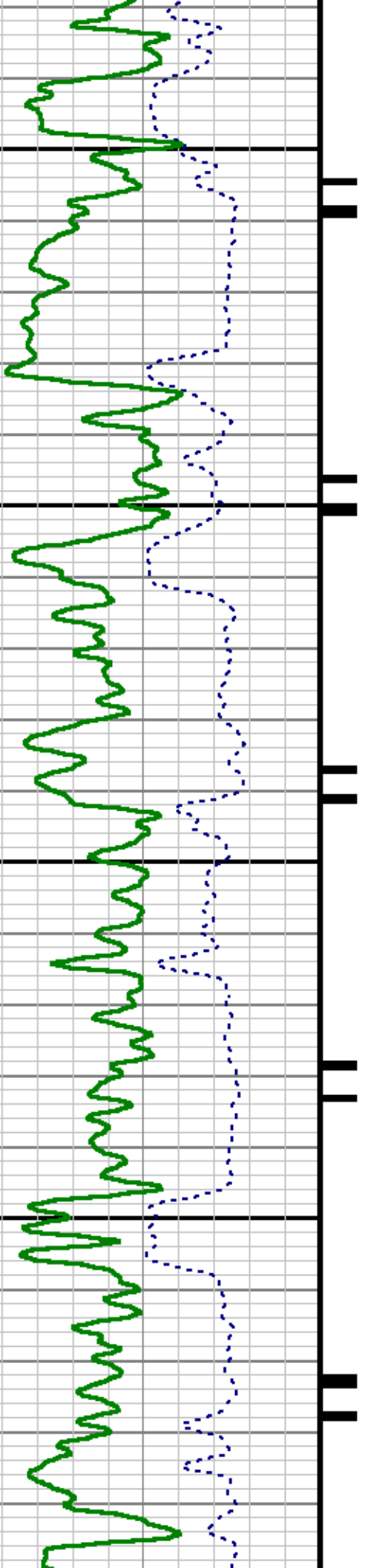


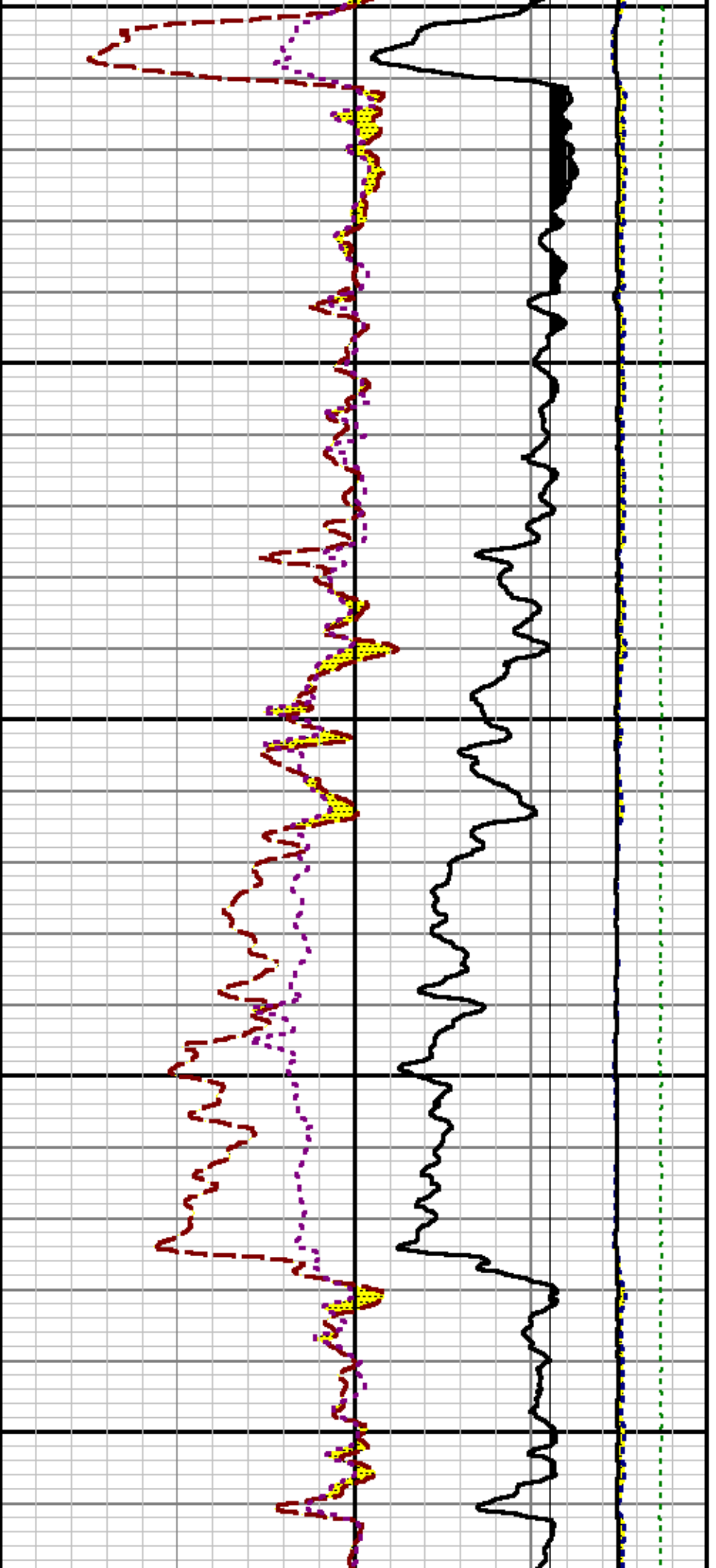


12600

12700

12

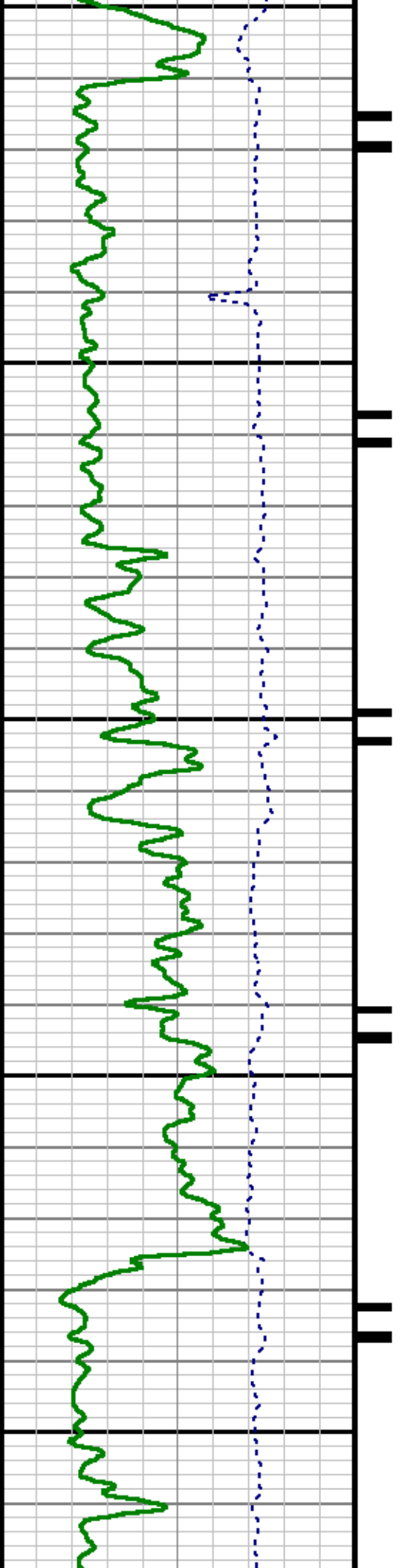


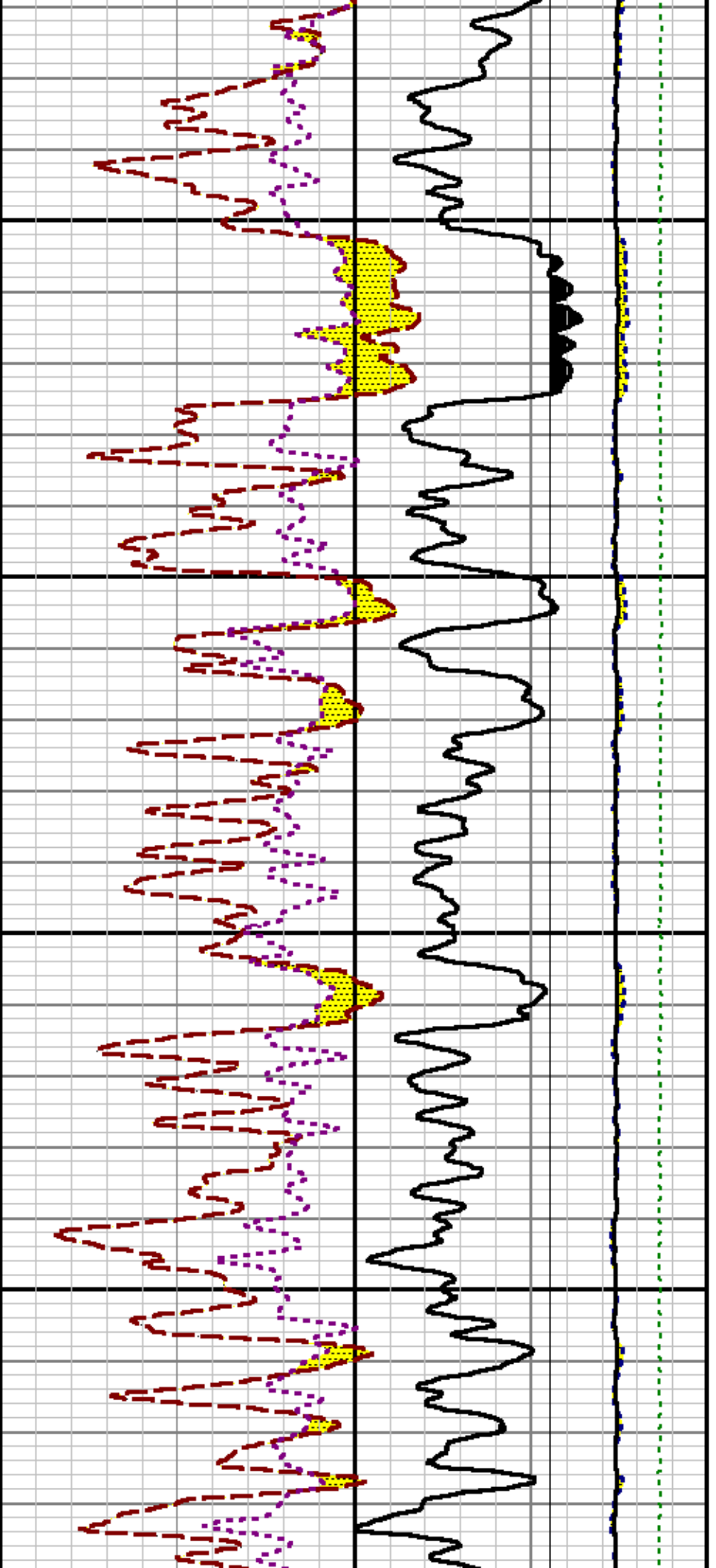


800

12900

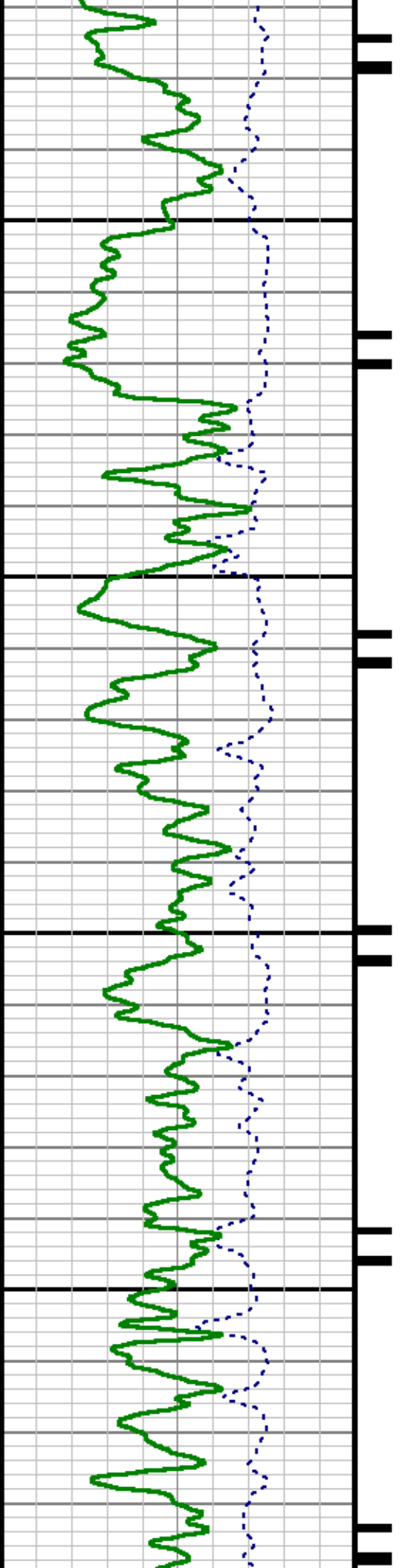
13000

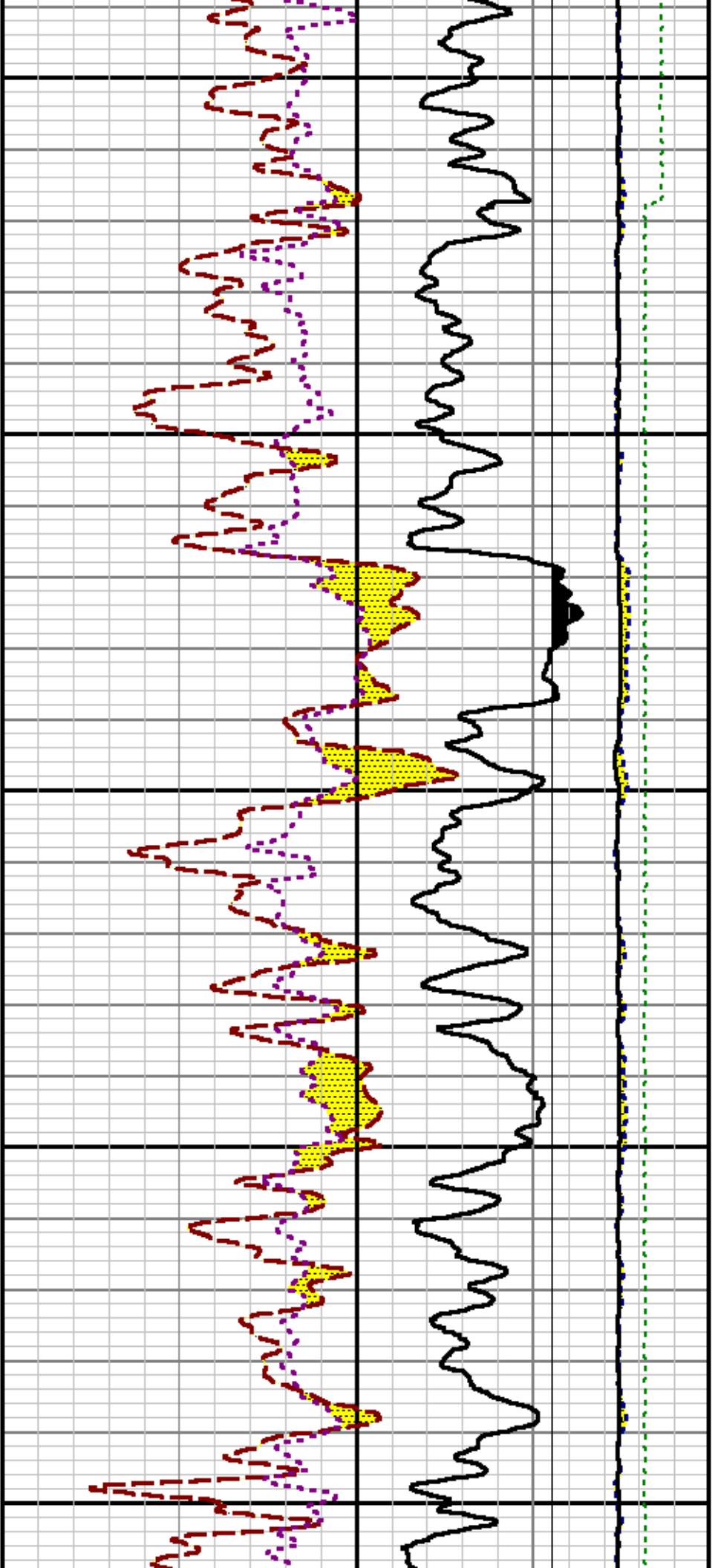




13100

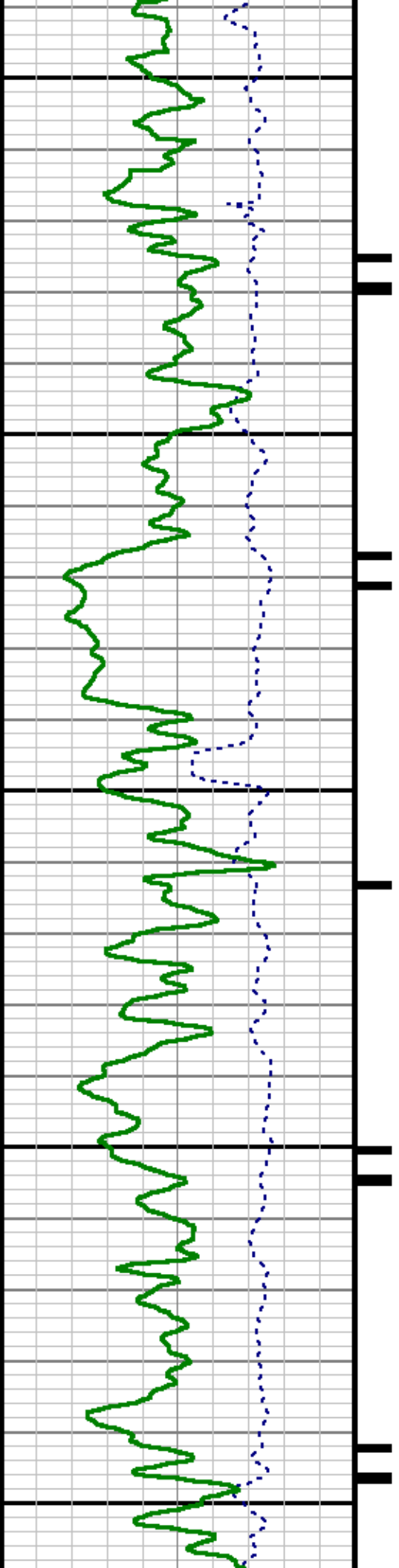
13200

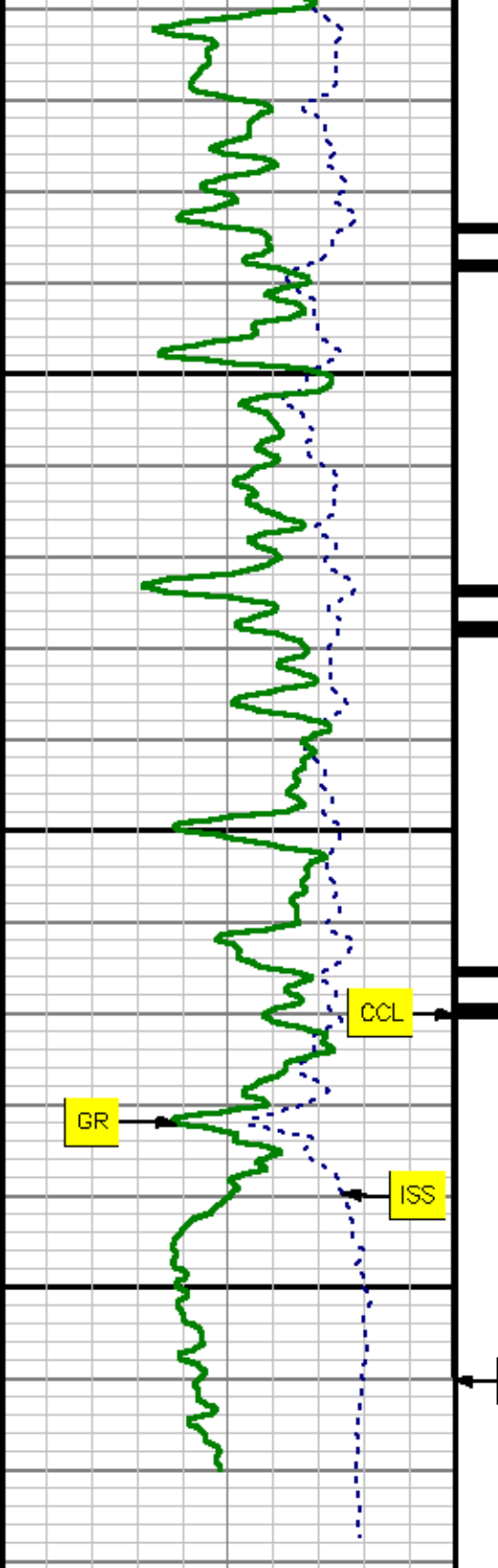




13300

13400

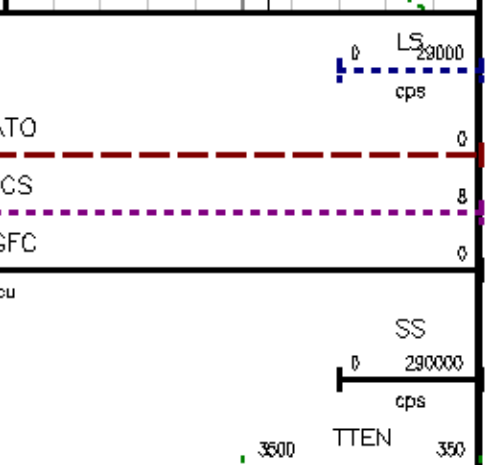
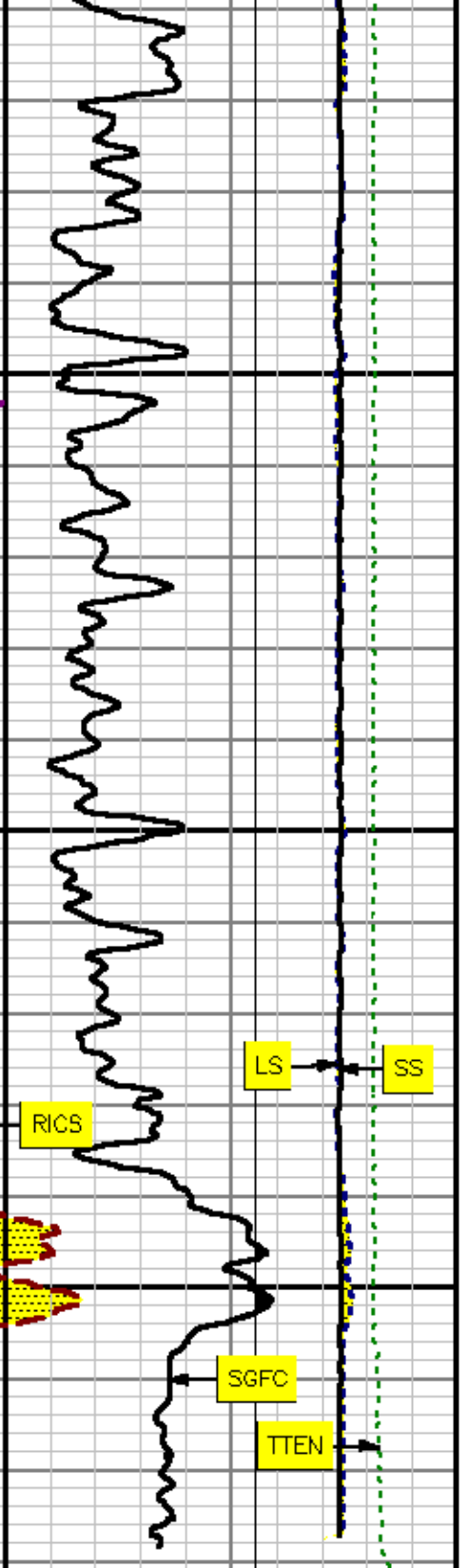
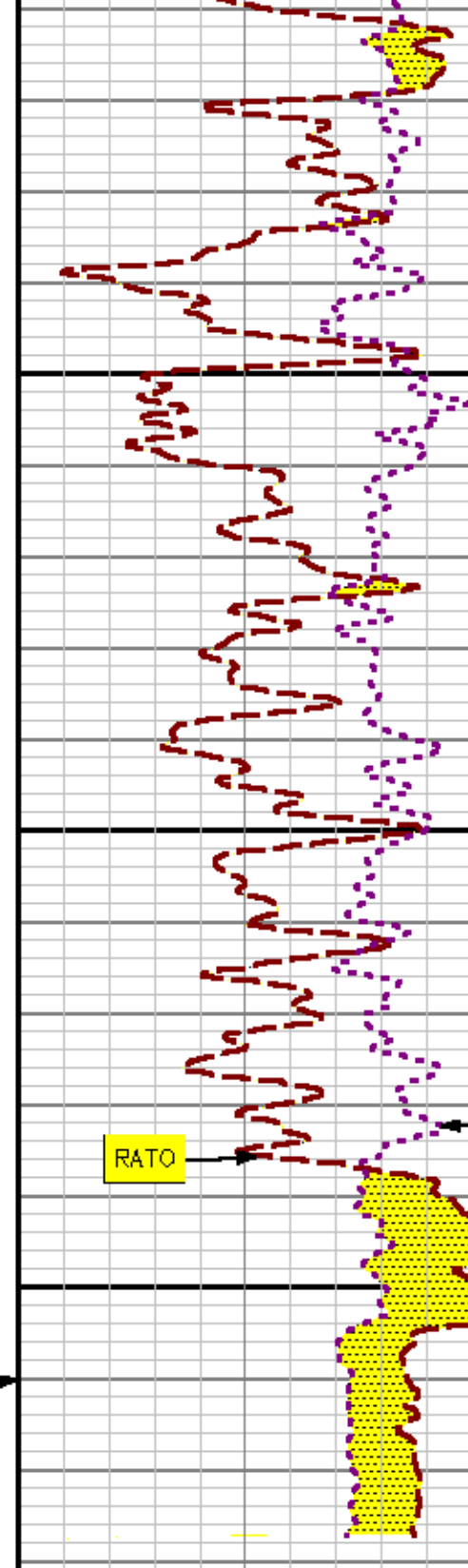
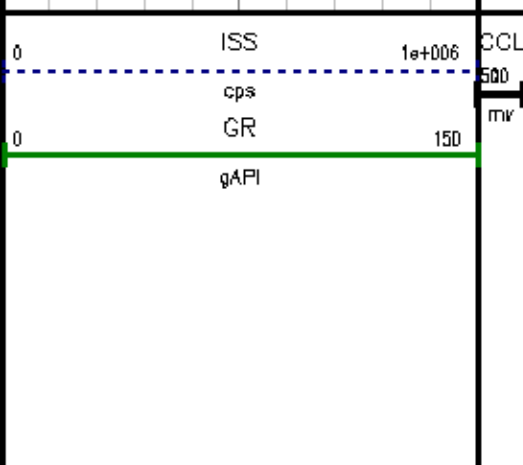




13500

13600

MD Feet 1:240



REPEAT SECTION

SPL PROCESSING

MEASUREMENT TYPE	PARAMETER	VALUE	UNITS	TOP	BOTTOM
PNC Porosity	Borehole	Cased		9993.063	10490.000
PNC Porosity	Borehole Size	9.875	inch	9993.063	10009.000
PNC Porosity	Borehole Size	6.125	inch	10009.000	10490.000
PNC Porosity	Casing Size	7.000	inch	9993.063	10009.000
PNC Porosity	Casing Size	4.500	inch	10009.000	10490.000
PNC Porosity	Gas Filled	Non Gas Filled		9993.063	10009.000
PNC Porosity	Gas Filled	Non Gas Filled		10009.000	10490.000
PNC Porosity	Matrix	Sandstone		9993.063	10490.000

DEPTH OFFSETS

(for Acquired Curves)

SERIES	DEPTH OFFSET	ACQUIRED CURVES					
B248EA	-14.478	FLTM					
B248EA	-12.478	GCL CHV					
2812LA	-9.928	GR					
B281XA	-0.662	HVC3Q0	SEQ3	AMA3	AML3	BKX	CXS
		GPT3Q0	CPT3Q2	CPT3Q3	CPT3Q4	ET3	IXS
		MCS3	MCS3Q0	QCAL3	RGN3	RICK	SDA3
		SDL3	SGA3	SGL3	STA3	XS	ASPEC3
		AMB3	AMF3	CHF3	IXSC	IXSN	RAT023
		RICKC	RIN13C	RIN23	RIN23C	SD3D	SG3D
		SGB3	SGF3	WDTH3	CXSR	IXSR	XSR
		RICKR					
B281XA	-0.250	HVC2Q0	SEQ2	AMA2	AMB2	AMF2	AML2
		BKL	CHF2	CLS	CPT2Q0	CPT2Q2	CPT2Q3
		GPT2Q4	ET2	ILS	LS	MCS2	MCS2Q0
		QCAL2	RGN2	RICL	RONE23	RTWO23	SDA2
		SDL2	SGA2	SGB2	SGF2	SGK2	SGL2
		STA2	ASPEC2	ILSC	ILSN	WDTH2	RICLC
		CLSR	ILSR	LSR	RICLR		
B281XA	0.000	CPRS	HVC1Q0	WV	SEQ	SEQ1	AMA1

AMB1	AME1	AMF1	AML1	BKS	CHF1
CSS	CORB	CORF	CPT1Q0	CPT1Q2	CPT1Q2A
GPT1Q2B	GPT1Q2C	GPT1Q3	GPT1Q4	GPT1Q5	ET1
G1	G2	GE1S	GE2S	ISS	MCS1
MCS1Q0	QA1	QCAL1	QM1	RAT0	RAT013
RBOR	RGN1	RICS	RIN	RONE	RPOR
RTW0	RIN13	RONE13	RTW013	SALB	SC1
SDA1	SDL1	SGA1	SGB1	SGBC	SGE1
SGF1	SGFC	SGK1	SQL1	SS	SS2
STA1	PD1S	PD2S	PD3S	MD1S	MD2S
MD3S	DG1S	DG2S	DG3S	PD1M	PD2M
PD3M	MD1M	MD2M	MD3M	DG1M	DG2M
DG3M	MVS	MA	MVM	FILV	IAM
TA	PVM	PVS	IAS	SSTAT	QPD1
QPD2	QPD3	QMD1	QMD2	QMD3	QDG1
QDG2	QDG3	QMA	QTA	QFILV	QMV
QPV	QIA	DERR	DCNT	QPK1	QSA1
PKS1	ASPEC1	HOC	FE2XC	ISSC	RINC
ISSN	RDEN	WDTH1	RICSC	CSSR	G1R
G2R	ISSR	SSR	SS2R	RATOR	RAT013R
RBORR	RICSR	RINR	RIN13R	RONER	RPORR
RTWOR					
SYSTEM	0.000	TEN	TTEN		

Created by : RPM9, v5.0.0.0

Plotted by : PlotMgr, v5.4.504

Company : EXXONMOBIL PRODUCTION COMPANY

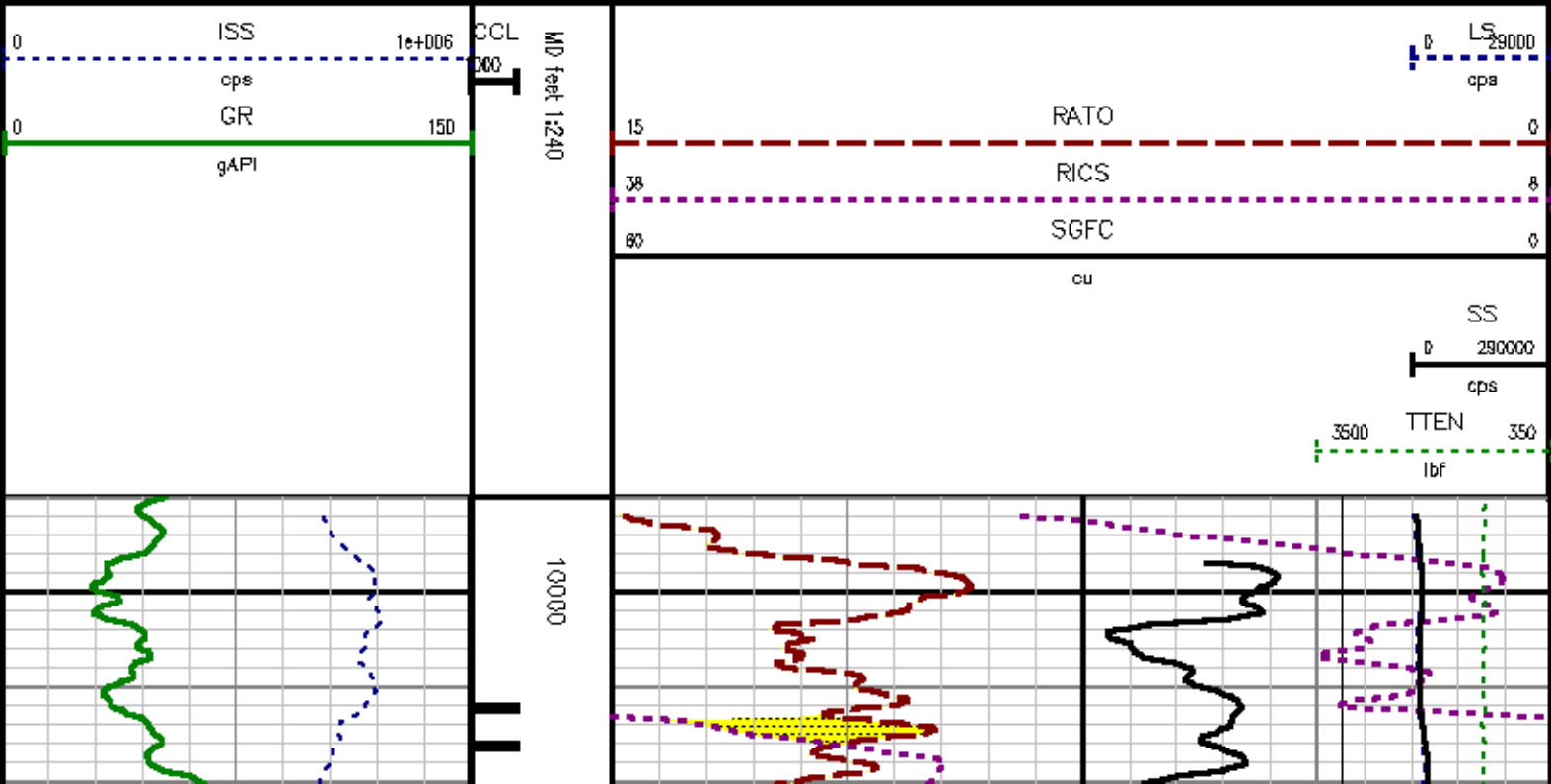
Well : PCU 296-5A9

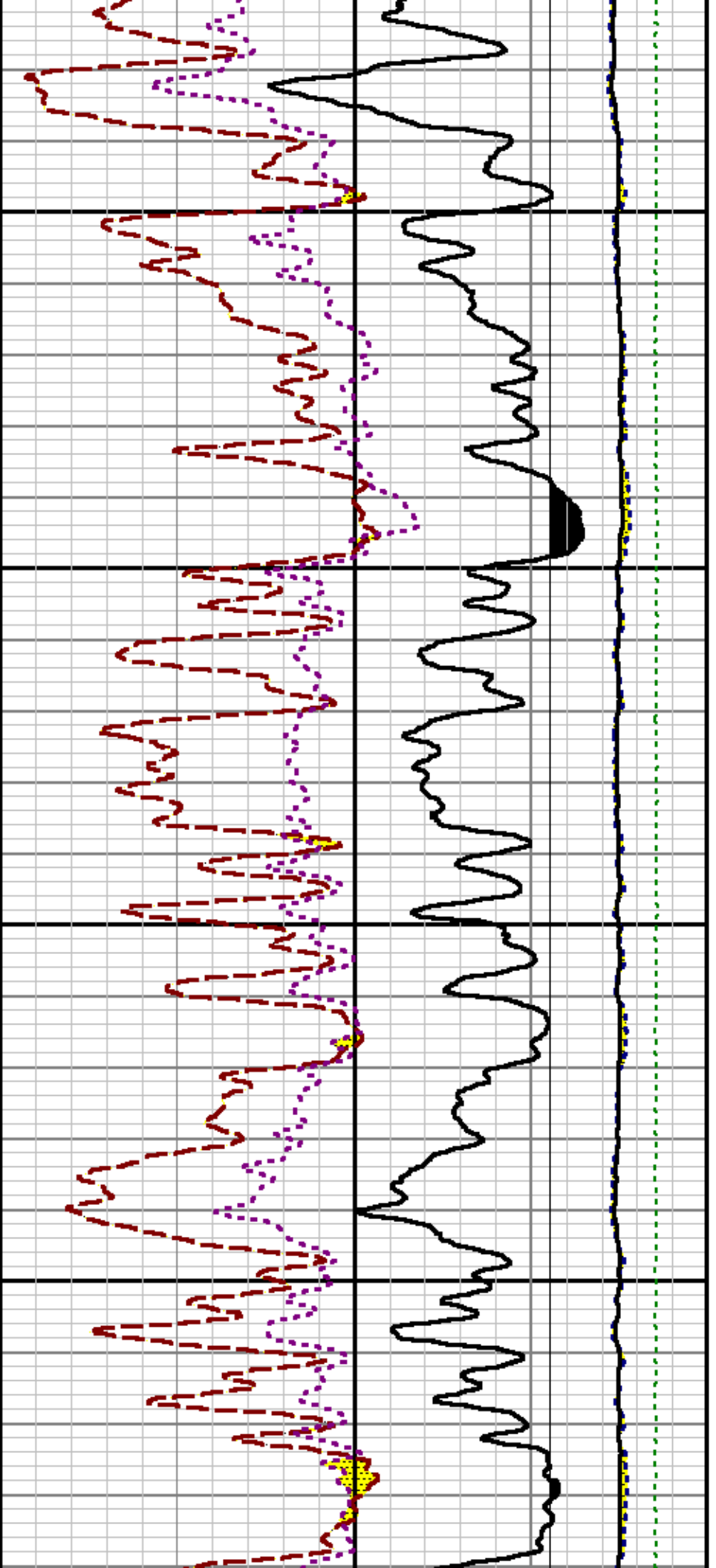
File Name : d:\well\data\q9rpm\repeat.xtf

Mode : PlotMgr 5.4.504

Interval : 9990.00 - 10490.00 feet UP

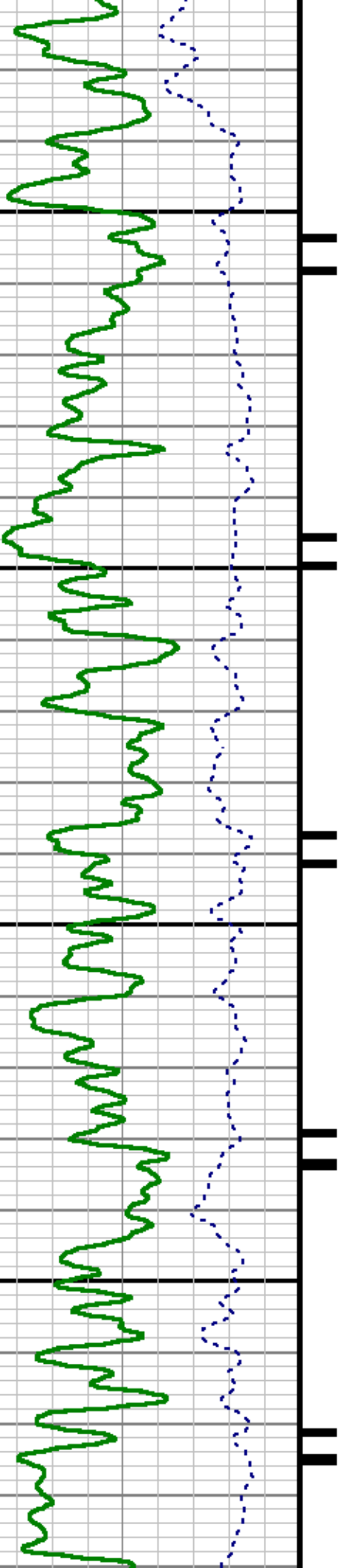
Created : 7/21/2011 5:36:58 AM

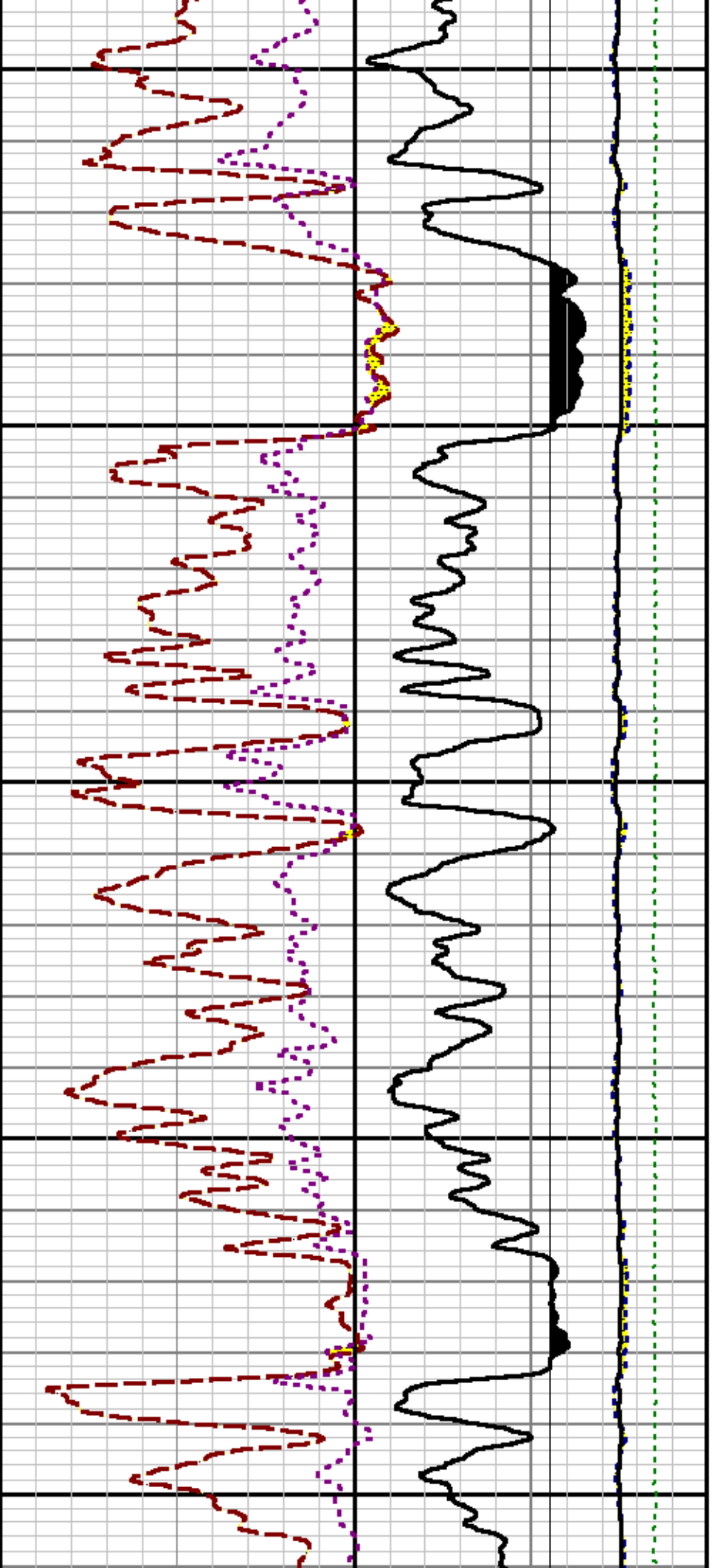




10100

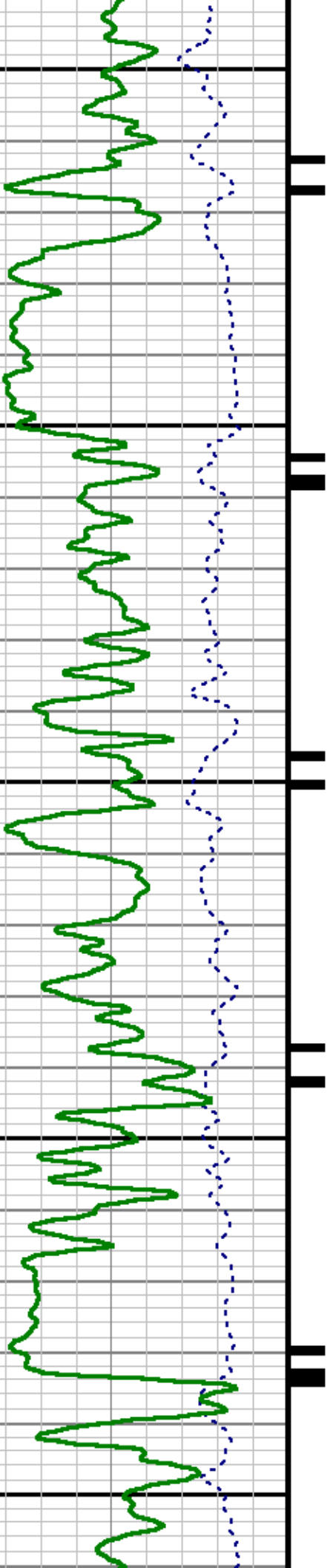
10200

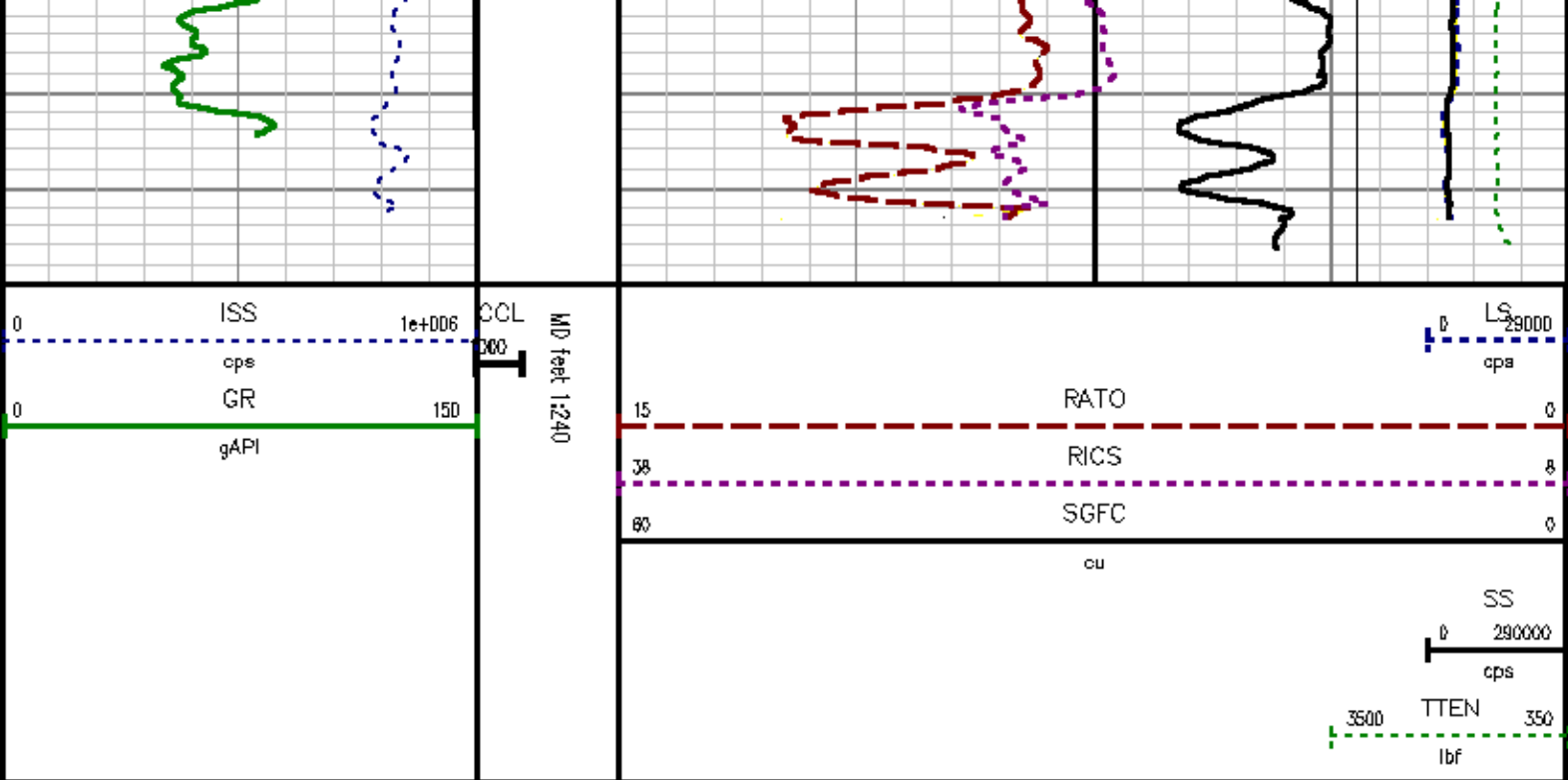




10300

10400





CALIBRATION SUMMARY

GAMMA RAY

Calibration File: C:\cgas\calver\GR\63611.cal

CALIBRATION SUMMARY

DATE/TIME PERFORMED:	Mon Jun 20 16:05:41 2011	TOOL SERIES:	2812LA	ASSET:	636	SEQ:	J1
Calibrator #	Background [cps]	Calibrator On [cps]	Multiplicative	Background [api]	Calibrator On [api]	Differential [api]	
52K DA612	53.71	281.53	0.922	49.51	259.51	210.00	

Verification File: C:\cgas\calver\GR\63611.VP

PRIMARY VERIFICATION

DATE/TIME PERFORMED:	Mon Jun 20 16:10:11 2011	TOOL SERIES:	2812LA	ASSET:	636	SEQ:	J1
Calibrator #	Background [cps]	Calibrator On [cps]	Multiplicative	Background [api]	Calibrator On [api]	Differential [api]	
52K DA612	54.56	280.29	0.922	50.29	258.36	208.07	

Calibration File: C:\cass\calver\PNC\753JU.cal

PNC 3D CALIBRATION SUMMARY

DATE/TIME PERFORMED: Mon Jul 11 10:31:18 2011 TOOL SERIES: 8281XA ASSET: 753 SEQ: JU

Calibrator #

SHOP SHOP

Source #

8281AA 11710723

	ISS	Mtr Vltz (V)	SS Gain	LS Gain	XLS Gain	EA Temp (degF)	Sync Delay (usec)	RCAL
Raw Data	821620	128.00	2197.00	2383.00	2148.00	139.17	15.00	1.0441
Interpolated	1300000	147.41	2218.86	2379.82	2145.10			

	ISS	BKS	BKL	BKX	SGA1	SDA1	SGA2	SDA2
Raw Data	821620	6327.36	1022.64	167.43	25.81	0.13	24.26	0.26
					25.35 26.15	0.00 0.20	23.60 24.80	0.00 0.40

	ISS	ILS	IXS	SS	SS2	LS	CSS	CLS
Raw Data	821620	184376.05	27743.57	97232.09	34575.96	9479.68	58945.88	15230.59
Fit Quality %		1.86	1.80	1.12	1.07	1.77	1.02	1.74

	ISS	RBOR	RIN ISS/ILS	RIN13 ISS/IXS	RICS ISS/CSS	RATO SS/LS	RTWO SS2/LS	RONE CSS/CLS
Raw Data	821620	1.44	4.46	29.62	13.94	10.26	3.65	3.87
		1.42 1.45	3.55 5.21	22.20 32.10	10.99 16.34	10.06 11.10	3.57 3.95	3.76 4.22
Fit Quality %		0.07	1.23	1.24	0.21	0.93	0.93	0.95
Reduced	1415152	1.44	4.39	29.17	13.96	10.10	3.59	3.81
		1.42 1.45	4.33 5.52	27.60 32.70	13.70 16.34	10.06 11.10	3.57 3.95	3.76 4.22

TOOL DIAGRAM

OTA SHORT CABLE HEAD

29.85'

PCM POWER SUPPLY (P25054)

PUMP POWER SUPPLY (8230LA)

TELEMETRY / CCL (8248EA)

SONDEX GAMMA RAY (2812LA)

RESERVOIR PERFORMANCE MONITOR (8281XA)

CCL MP 21.76'

MP 19.32'

XLS DETECTOR 12.69'

LS DETECTOR 9.72'
SS DETECTOR 9.49'

0.00'

Total Length: 29.85'
Total Weight: Not Available
Max Diameter: 0' 1.70"



Baker Atlas

CASE

Company EXXONMOBIL PRODUCTION COMPANY
Well PCU 296-5A9
Field PICEANCE CREEK
County RIO BLANCO State COLORADO

Location:

SHL: 736' FNL & 528' FNL

SEC: 5 TWP: 2S RGE: 9EW

Elevations

KB 7339.2 ft
DF 7338.2 ft
GL 7309 ft

File No:

CH039009

API No:

06103112410000