



Baker Atlas

RESERVOIR PERFORMANCE MONITOR

File No: CH039003
 Company: EXXONMOBIL PRODUCTION COMPANY
 Well: FOU 298-5A7
 Field: PICEANCE CREEK
 County: RIO BLANCO
 State: COLORADO
 API No. 08103112430000

Location: SHA: 707' P.M.L. & 533' P.M.L.
 SEC: 5 TWP: 2S RGE: 98W
 Other Services: BOND

Permanent Datum: G.L. Elevation 7308 ft
 Log Measured From: K.B. 30.2 ft Above P. D.
 Drill Measured From: KELLY BISHING
 Elevations: KB 7398.2 ft, DF 7398.2 ft, GL 7308 ft

Date	17-JULY-2011
Run	ONE
Service Order	5755324
Depth Driller	13889 ft
Depth Logger	13800 ft
Bottom Logged Interval	13800 ft
Top Logged Interval	9802 ft
Time Started	19:30
Time Finished	03:00
Operator Rig Time	7.5 HRS
Type of Fluid in Hole	WATER
Fluid Density	N/A
Fluid Salinity	N/A
Fluid Level	FULL
Logged Cement Top	N/A
Wellhead Pressure	0 psi
Maximum Hole Deviation	N/A
Nominal Logging Speed	10 fpm
Maximum Recorded Temperature	298 degF
Reference Log	BAKER ATLAS/BOND
Reference Log Date	7-20-11
Equipment	4271
Recorded By	TIM KAUTT
Witnessed By	MR. JIM PETERSON

- FOLD HERE

In making interpretations of logs, our employees will give the customer the benefit of their best judgement. But since all interpretations are opinions based on inferences from electrical or other measurements, we cannot, and we do not guarantee the accuracy or correctness of any interpretation. We shall not be liable or responsible for any loss, cost, damages, or expenses whatsoever incurred or sustained by the customer resulting from any interpretation made by any of our employees.

Bit Size	From	To
9.875 in		
8.125 in		

Size	Weight	Grade	From	To
7 in	28 lbm/ft	P-110	SURFACE	9861 ft
4.5 in	15.1 lbm/ft	P-110	SURFACE	13754 ft

Remarks
 This log is correlated to the Baker Atlas Bond log dated 7-20-11
 The crew of 4271 Thanks You.

Run	Trip	Tool	Series Number	Serial Number	Position

1	1	RPM	8281FA	1090082	FREE
1	1	RPM	8281PA	11802753	FREE
1	1	RPM	8281EA	10273848	FREE
1	1	GAMMA RAY	2812LA	11701636	FREE
1	1	CCL	8248EA	10586851	FREE
1	1	PCM	8250EA	0000	FREE

MAIN SECTION
IN PNC 3-D MODE

SPL PROCESSING

MEASUREMENT TYPE	PARAMETER	VALUE	UNITS	TOP	BOTTOM
PNC Porosity	Borehole	Cased		9829.993	12180.900
PNC Porosity	Borehole Size	9.875	inch	9829.993	9891.000
PNC Porosity	Borehole Size	6.125	inch	9891.000	12180.900
PNC Porosity	Casing Size	7.000	inch	9829.993	9891.000
PNC Porosity	Casing Size	4.500	inch	9891.000	12180.900
PNC Porosity	Gas Filled	Non Gas Filled		9829.993	9891.000
PNC Porosity	Gas Filled	Non Gas Filled		9891.000	12180.900
PNC Porosity	Matrix	Sandstone		9829.993	12180.900

DEPTH OFFSETS
(for Acquired Curves)

SERIES	DEPTH OFFSET	ACQUIRED CURVES							
8248EA	-14.478	FLTM							
8248EA	-12.478	CCL GHV							
2812LA	-9.928	GR							
8281XA	-0.662	HVC300	SEQ3	AMA3	AML3	BKX	CXS		
		CPT300	CPT302	CPT303	CPT304	ET3	IXS		
		MCS3	MCS300	QCAL3	RGN3	RICK	SDA3		
		SDL3	SGA3	SGL3	STA3	XS	ASPEC3		
		AMB3	AMF3	CHF3	IXSC	IXSN	RAT023		
		RICXC	RIN13C	RIN23	RIN23C	SD3D	SG3D		
		SGB3	SGF3	WDTH3	CKSR	IXSR	XSR		
		RICXR							
8281XA	-0.662	HVC300	SEQ3	AMA3	AML3	BKX	CXS		

B281XA

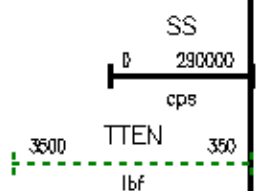
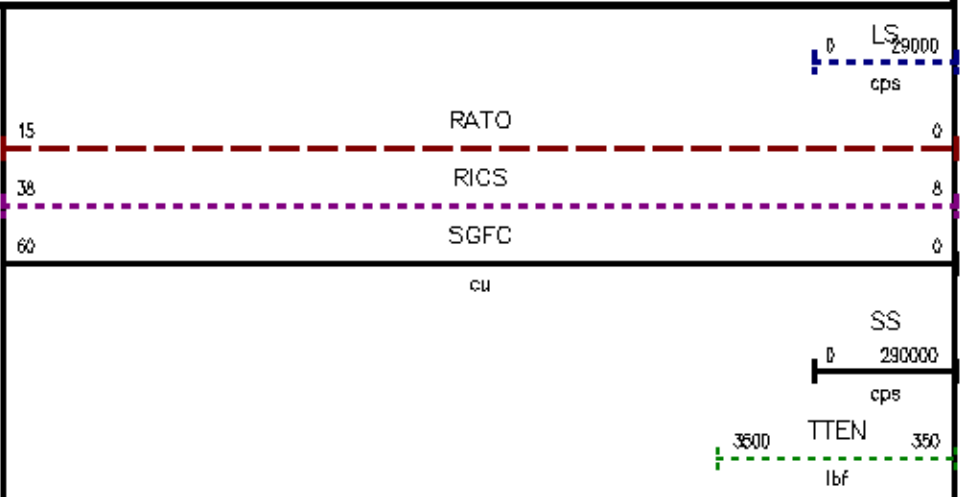
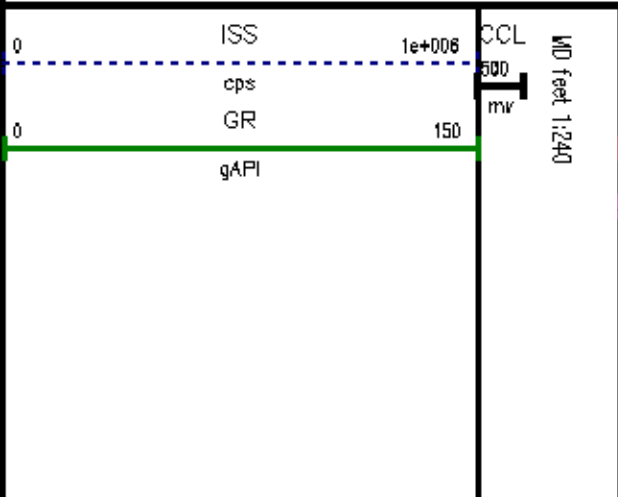
-0.250

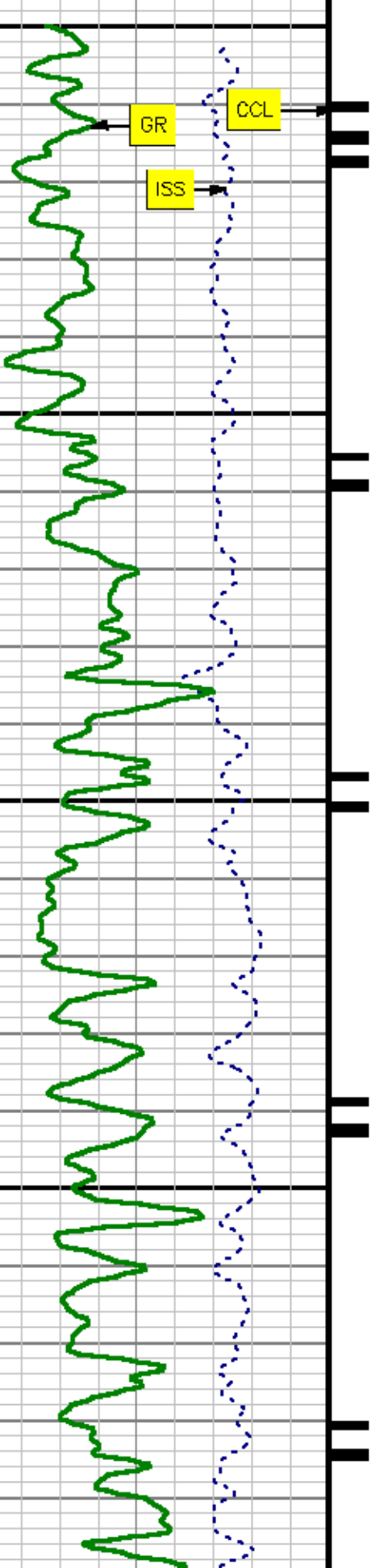
BKL	CHF2	CLS	CPT2Q0	CPT2Q2	CPT2Q3
CPT2Q4	ET2	ILS	LS	MCS2	MCS2Q0
QCAL2	RGN2	RICL	RONE23	RTWQ23	SDA2
SDL2	SGA2	SGB2	SGF2	SGK2	SGL2
STA2	ASPEC2	ILSC	ILSN	WDTH2	RICLC
CLSR	ILSR	LSR	RICLR		
CPRS	HVC100	WV	SEQ	SED1	AMA1
AMB1	AWE1	AMF1	AML1	BKS	CHF1
CSS	COORB	CORF	CPT100	CPT102	CPT102A
CPT102B	CPT102C	CPT103	CPT104	CPT105	ET1
G1	G2	GE1S	GE2S	ISS	MCS1
MCS100	QA1	QCAL1	QM1	RATO	RAT013
RBOR	RGN1	RICS	RIN	RONE	RPOR
RTWO	RIN13	RONE13	RTW013	SALB	SC1
SDA1	SDL1	SGA1	SGB1	SGBC	SGE1
SGF1	SGFC	SGK1	SGL1	SS	SS2
STA1	PD1S	PD2S	PD3S	MD1S	MD2S
MD3S	DG1S	DG2S	DG3S	PD1M	PD2M
PD3M	MD1M	MD2M	MD3M	DG1M	DG2M
DG3M	MVS	WA	WVM	FILV	IAM
TA	PVM	PVS	IAS	SSTAT	QPD1
QPD2	QPD3	QMD1	QMD2	QMD3	QDG1
QDG2	QDG3	QMA	QTA	QFILV	QMV
QPV	QIA	DERR	DCNT	QPK1	QSA1
PKS1	ASPEC1	HOC	FE2XC	ISSC	RINC
ISSN	RDEN	WDTH1	RICSC	CSSR	G1R
G2R	ISSR	SSR	SS2R	RATOR	RAT013R
RBORR	RICSR	RINR	RIN13R	RONER	RPORR
RTWOR					
SYSTEM		TEN	TTEN		

B281XA 0.000

SYSTEM 0.000

Created by : MIXED
 Plotted by : PlotMgr, v5.4.5D4
 Company : EXXONMOBIL PRODUCTION COMPANY
 Well : PCU 286-5A7
 File Name : d:\well\data\q7rpm\main1.xtf
 Mode : PlotMgr 5.4.5D4
 Interval : 9760.00 - 13636.00 feet UP
 Created : 7/19/2011 11:15:12 PM

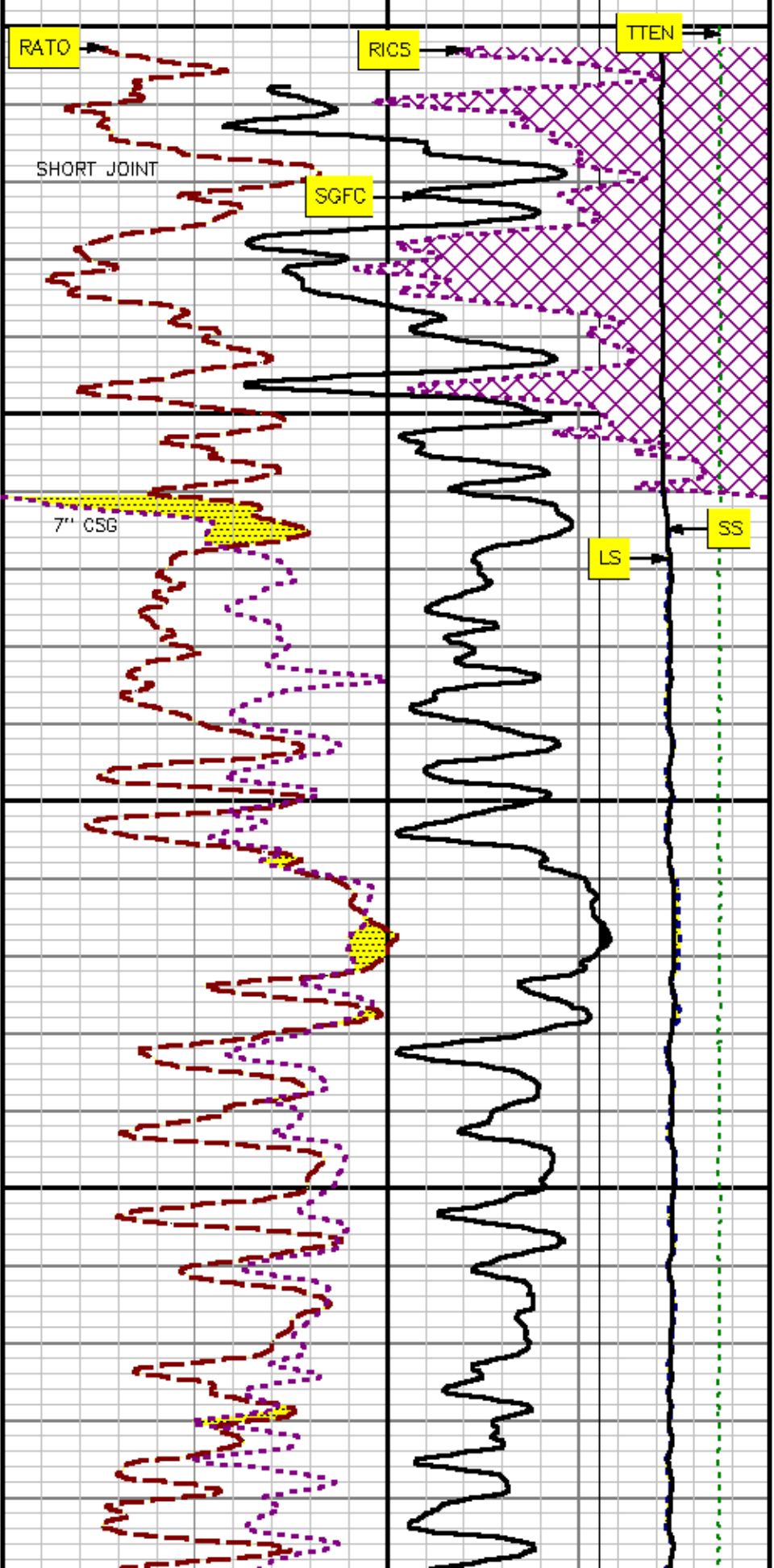


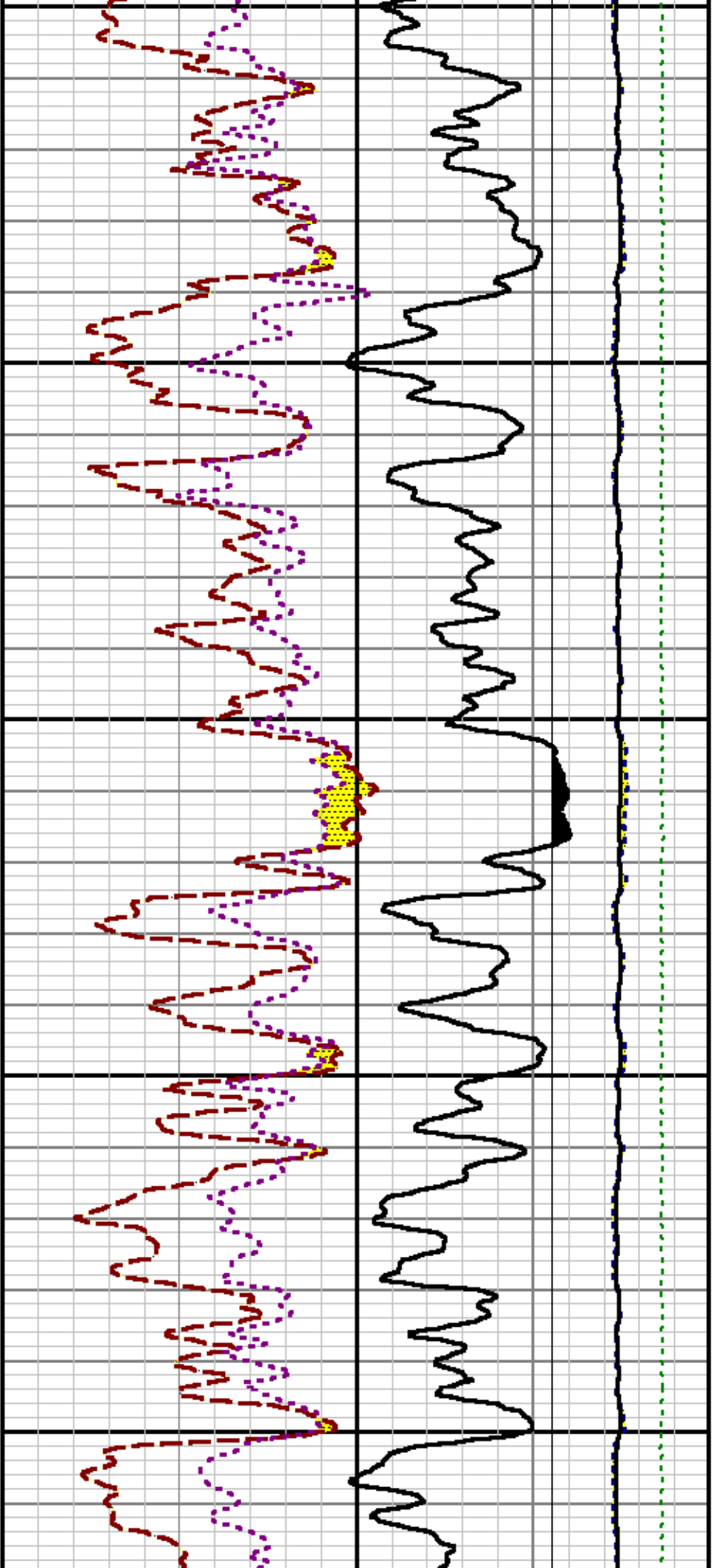


9800

9900

10

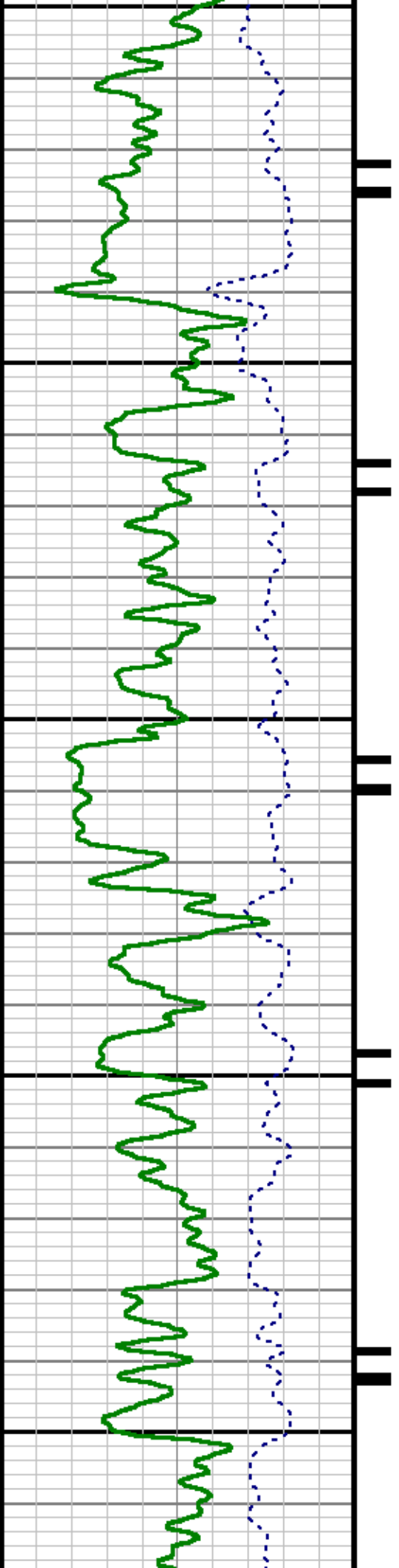


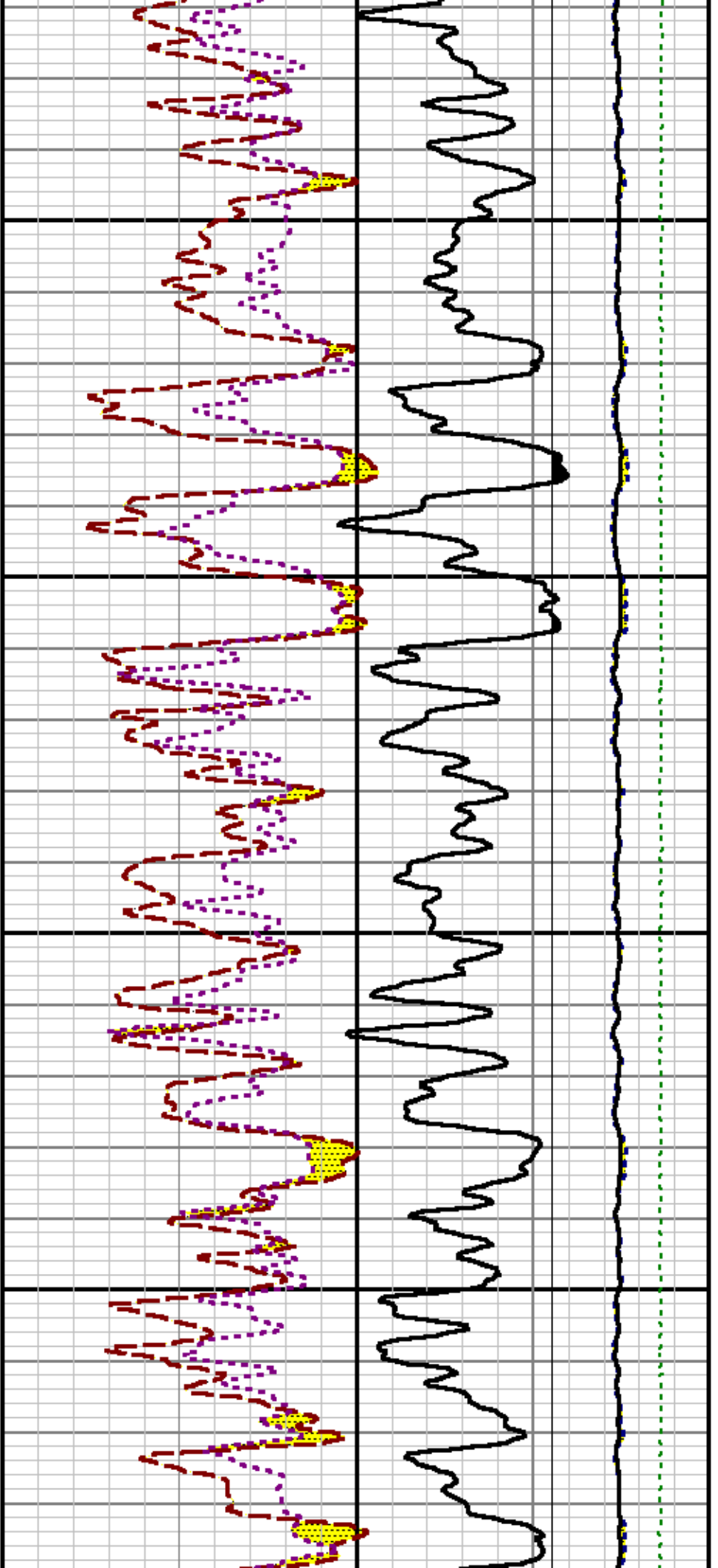


000

10100

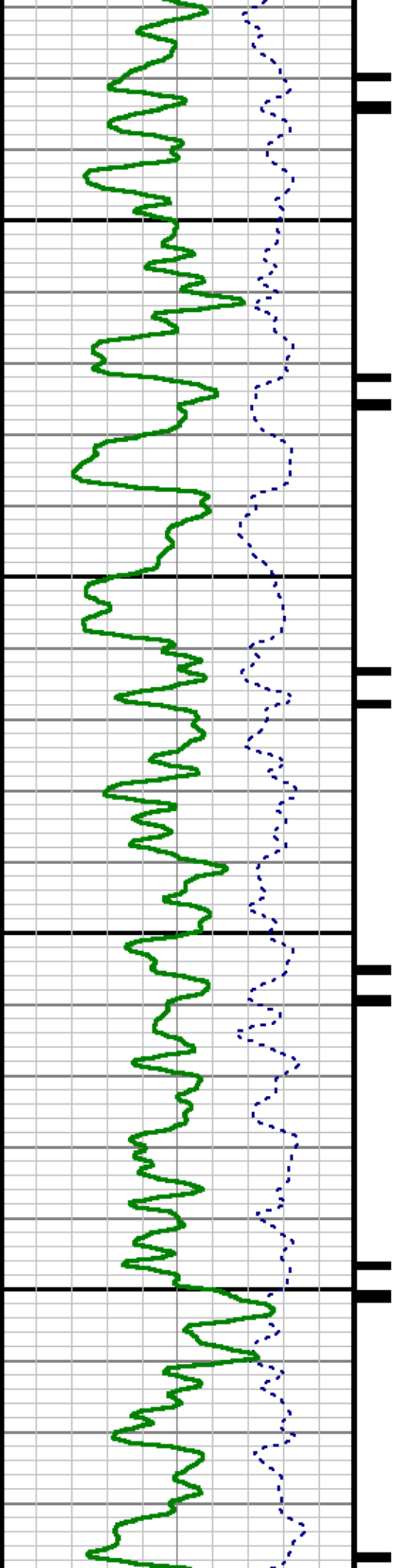
10200

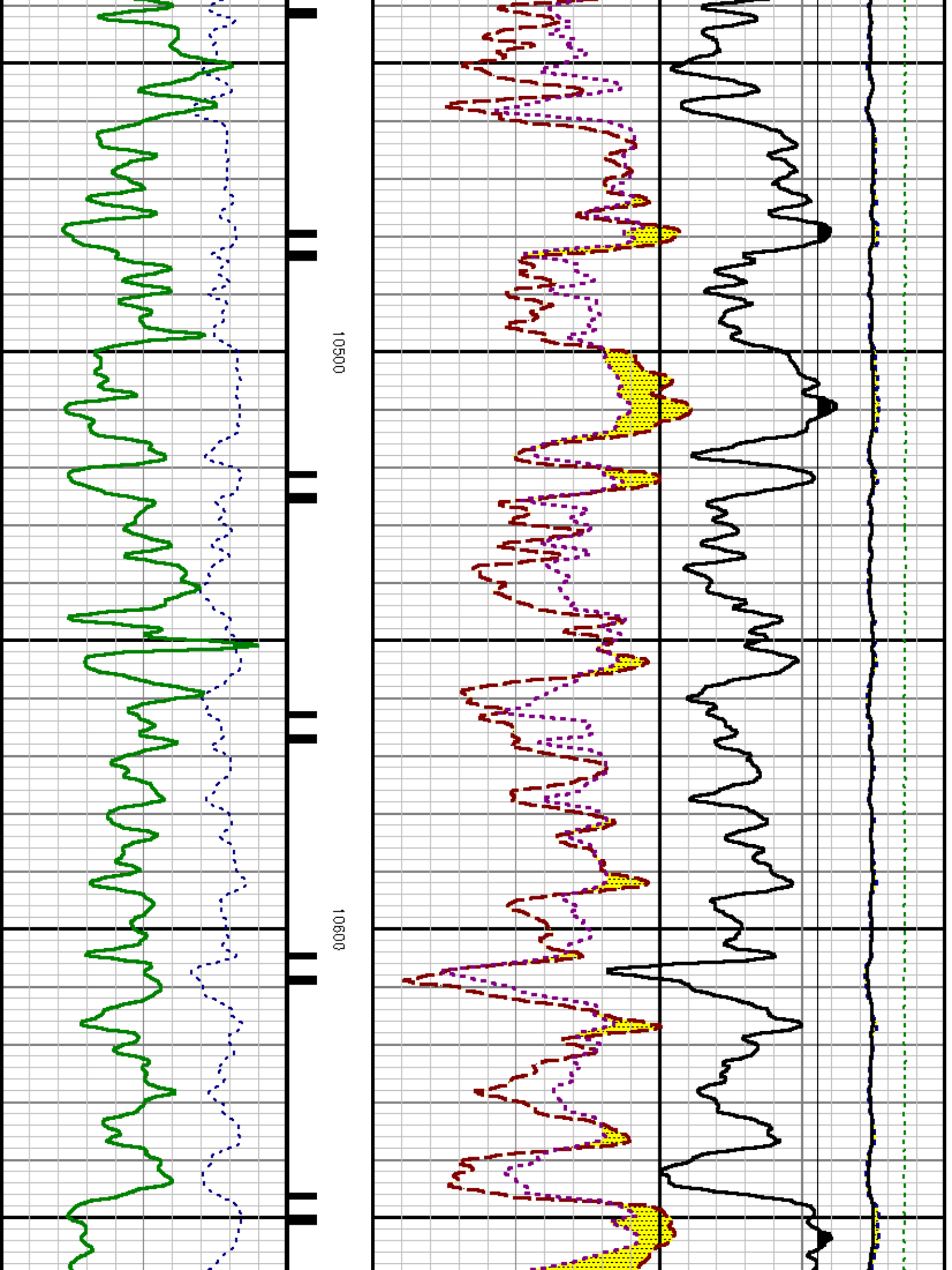


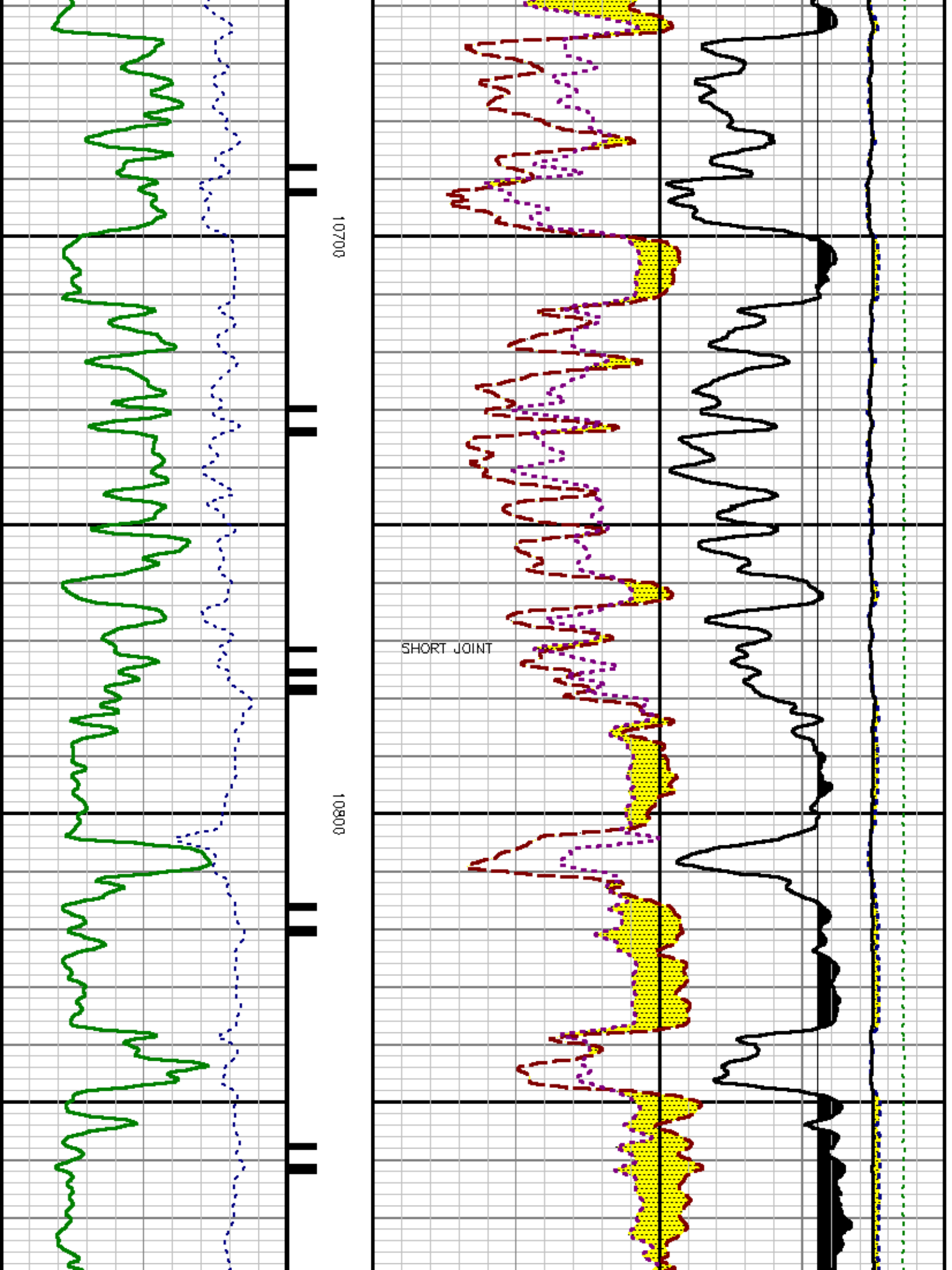


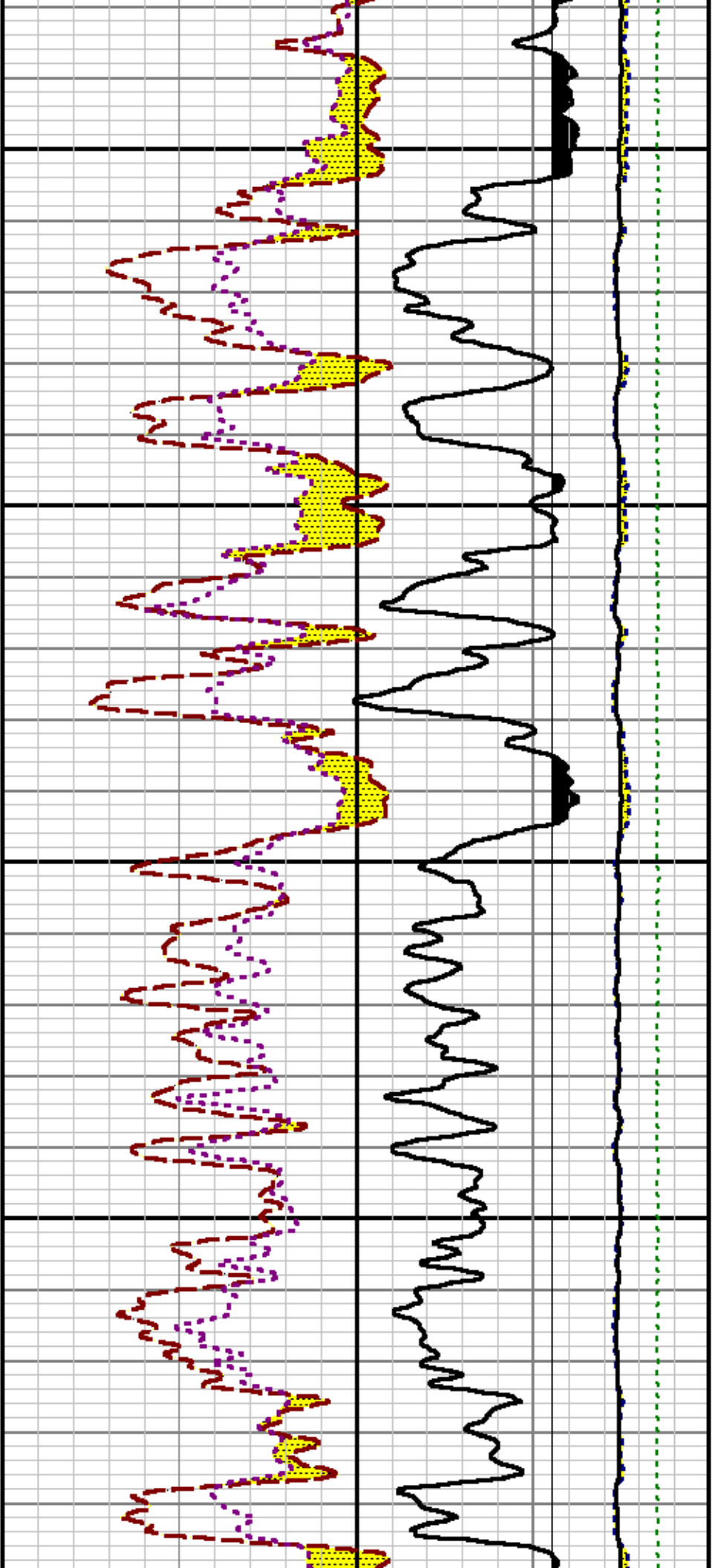
10300

10400





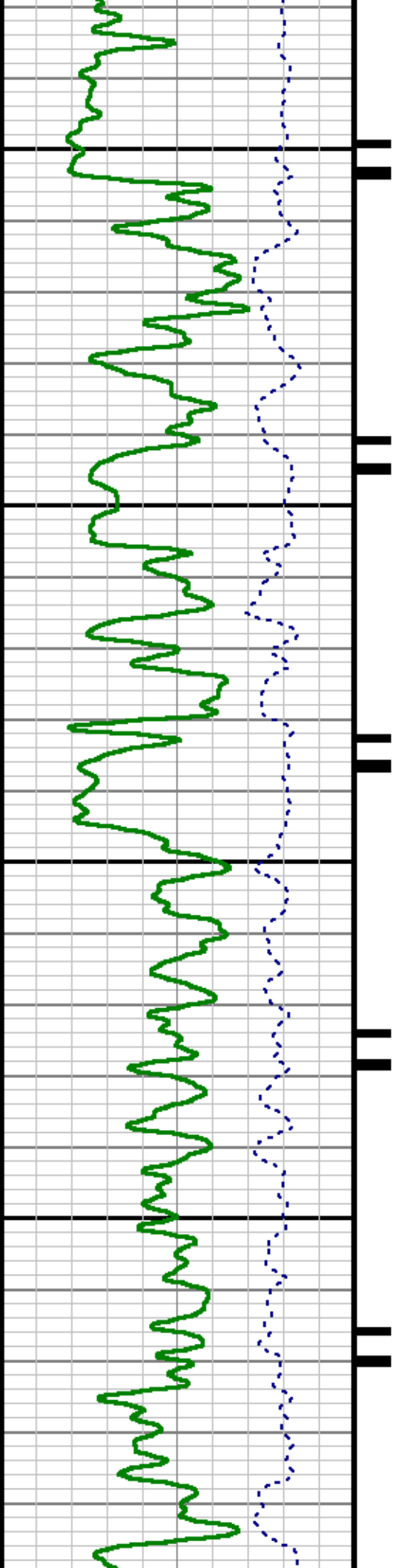


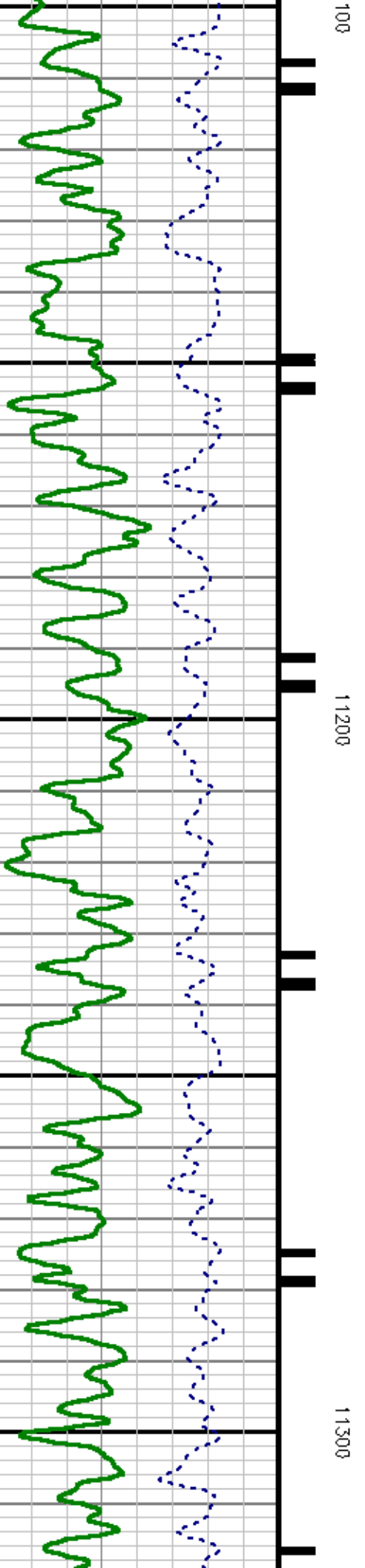
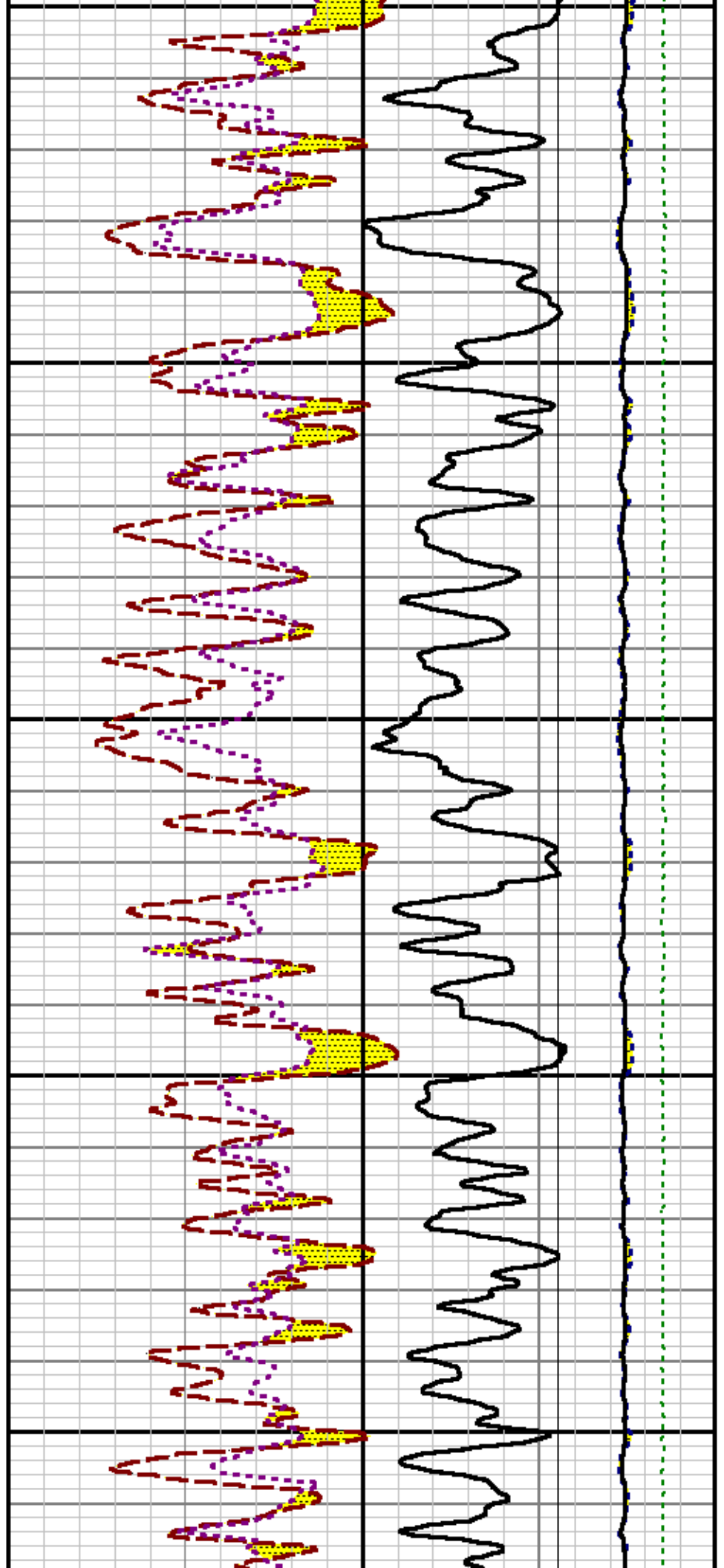


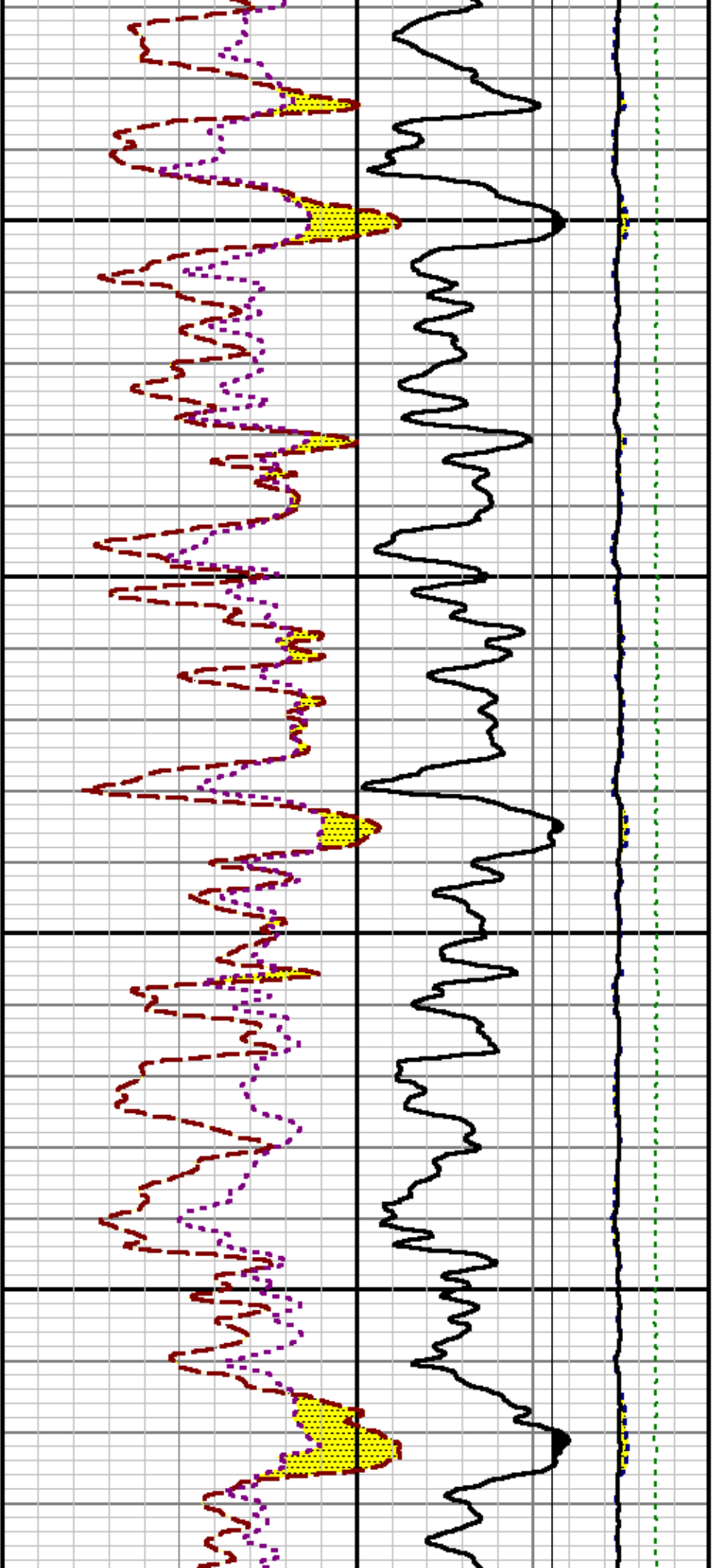
10900

11000

11

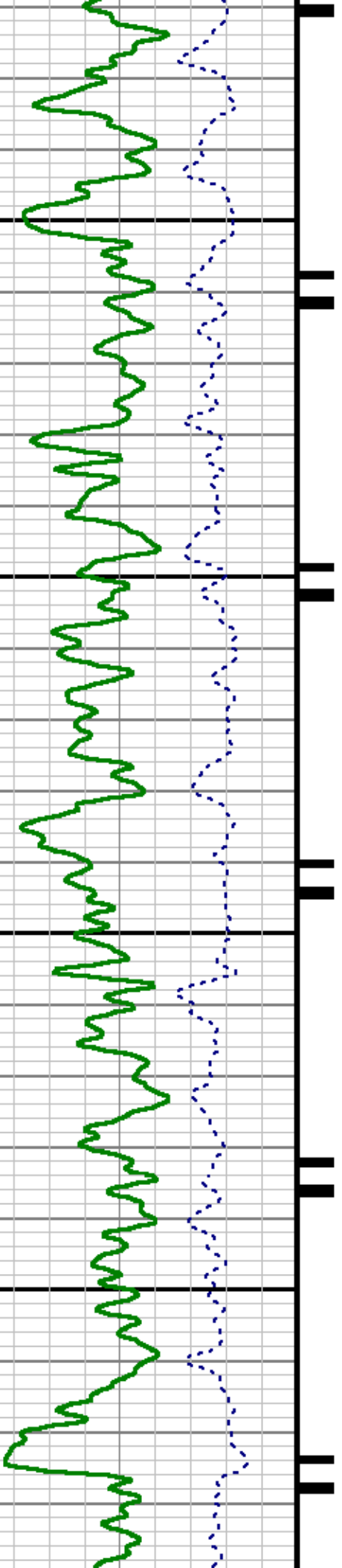


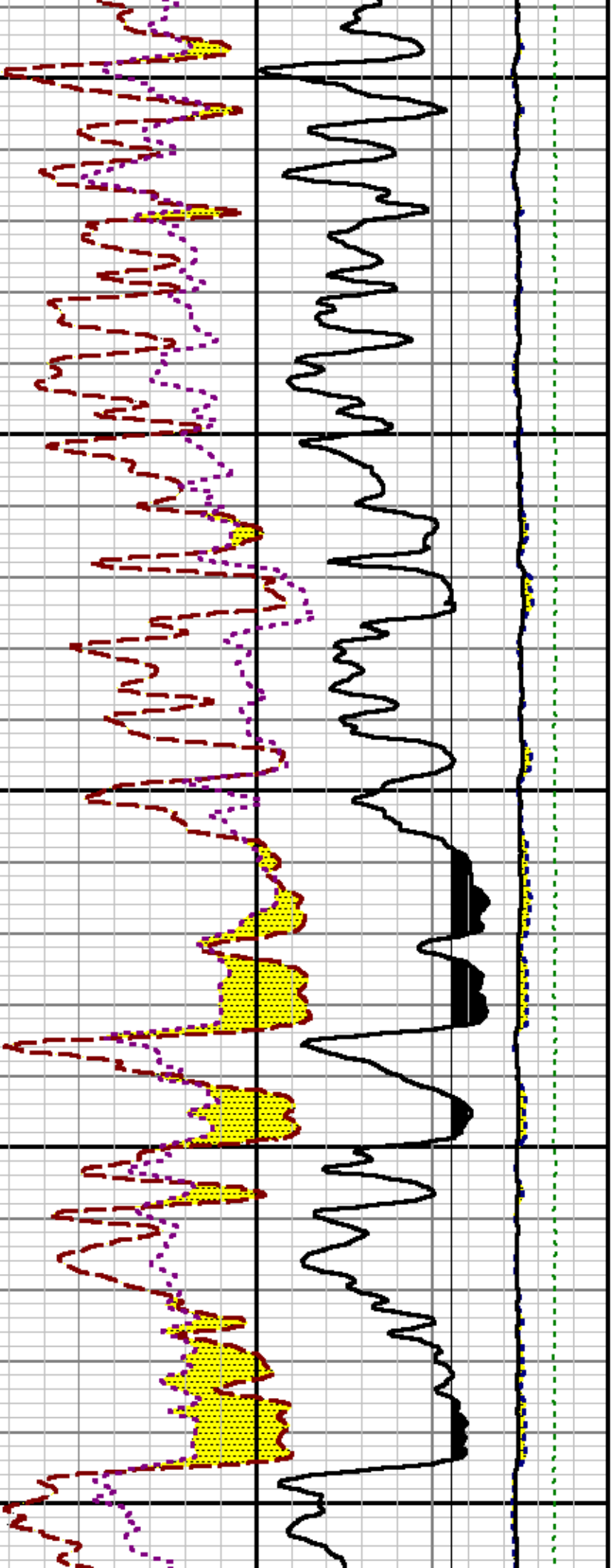




11400

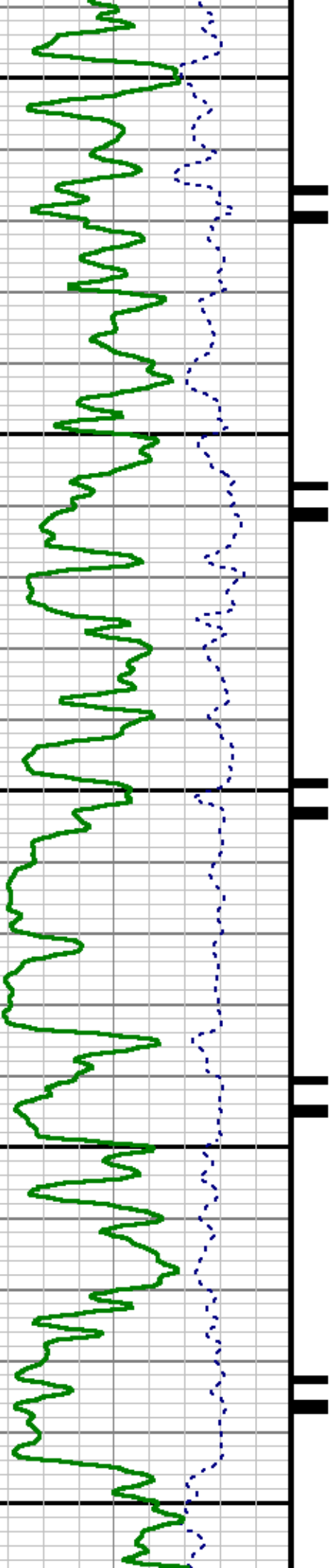
11500

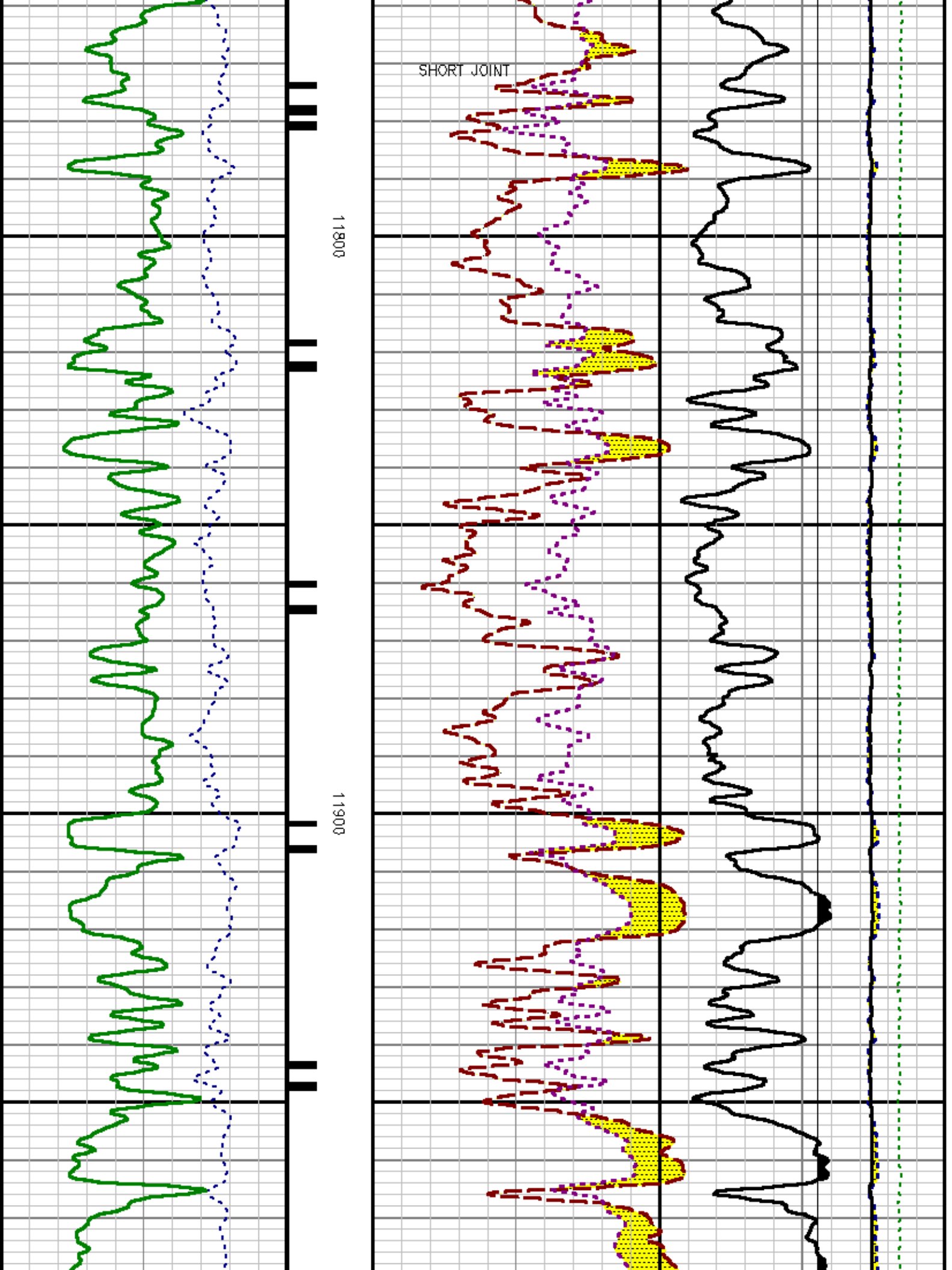


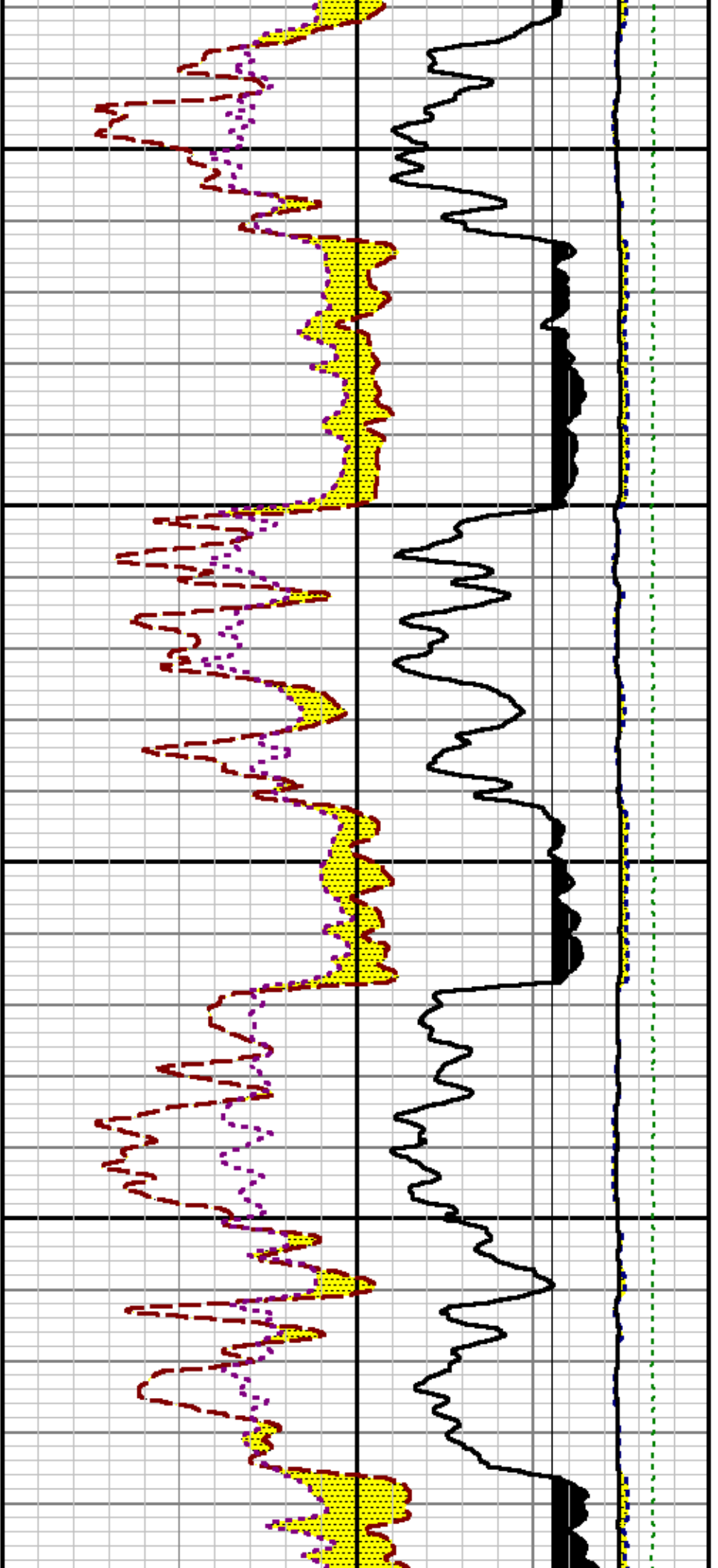


11800

11700



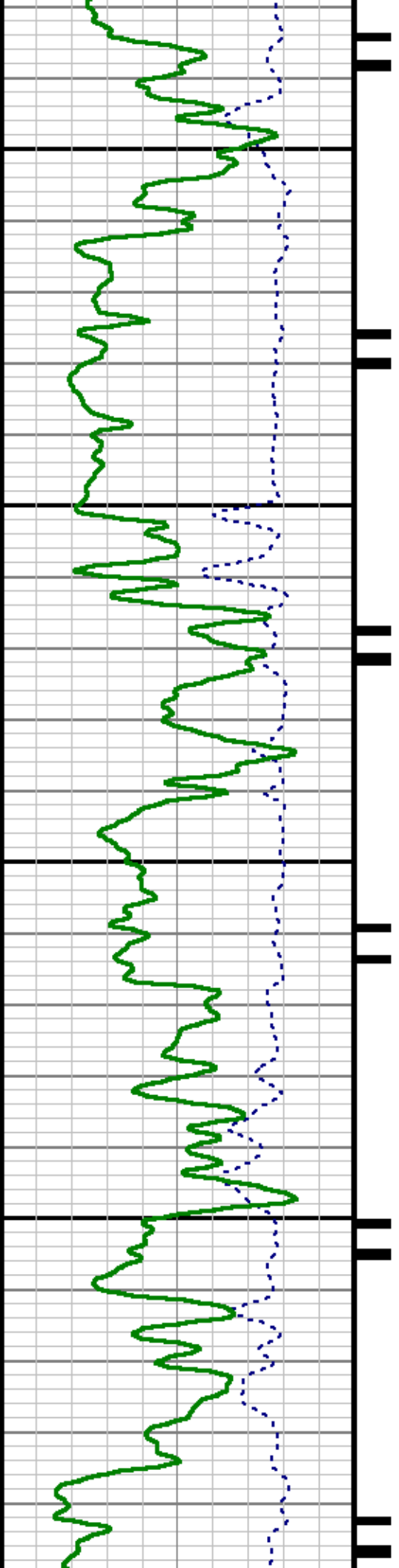


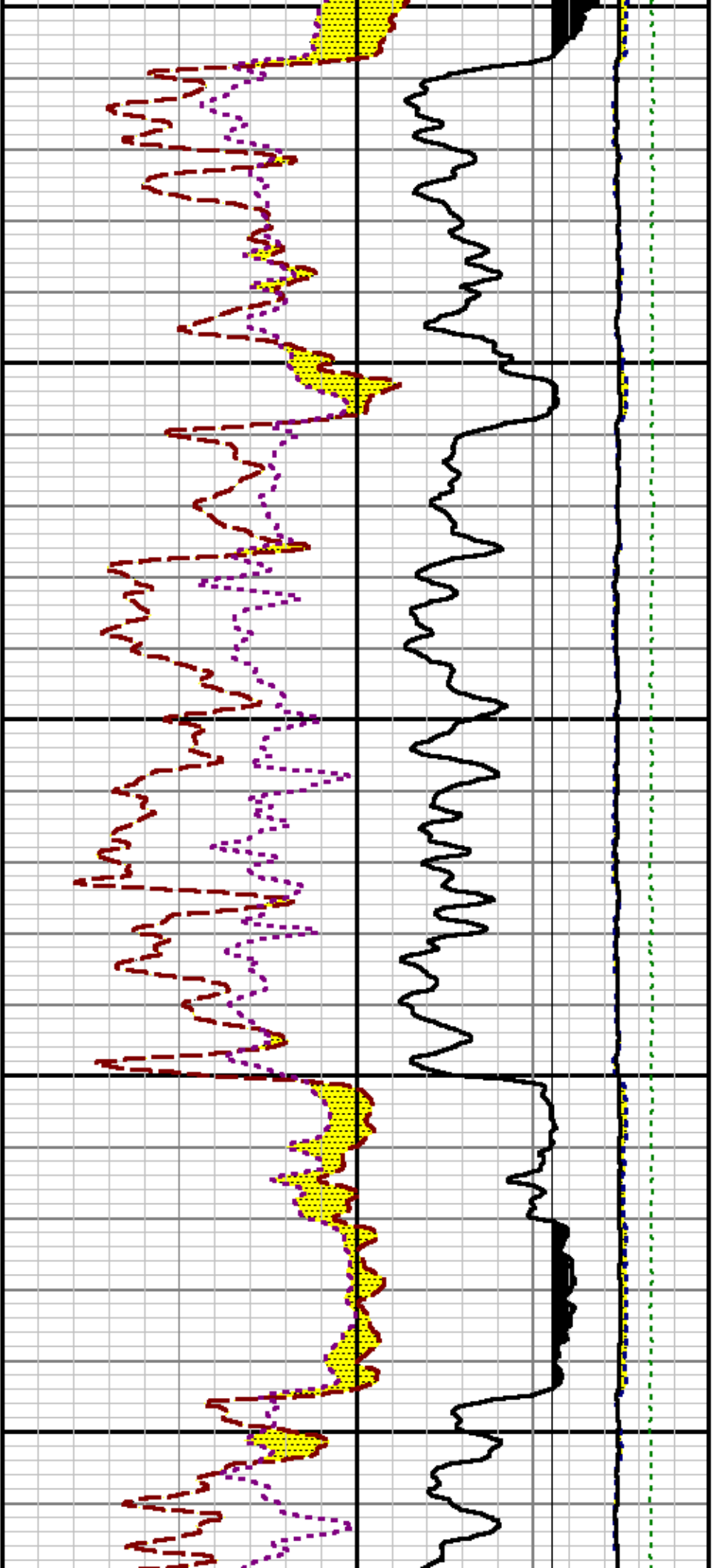


12000

12100

12

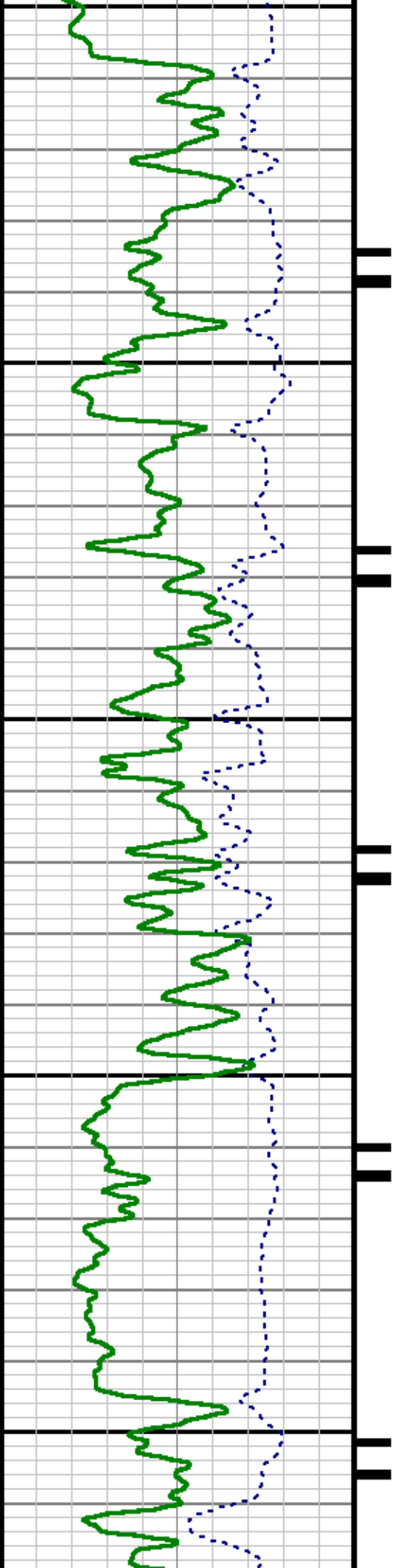


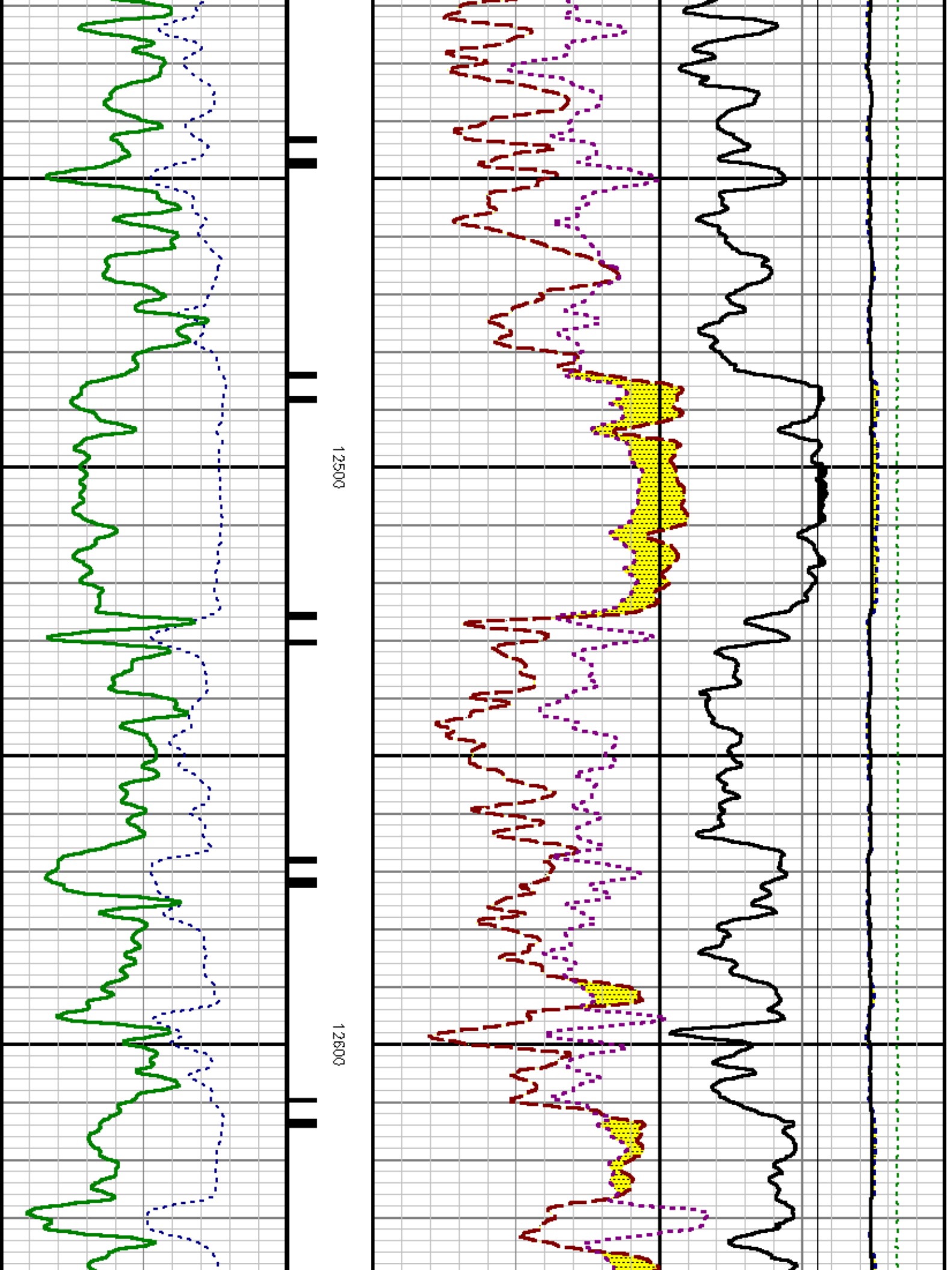


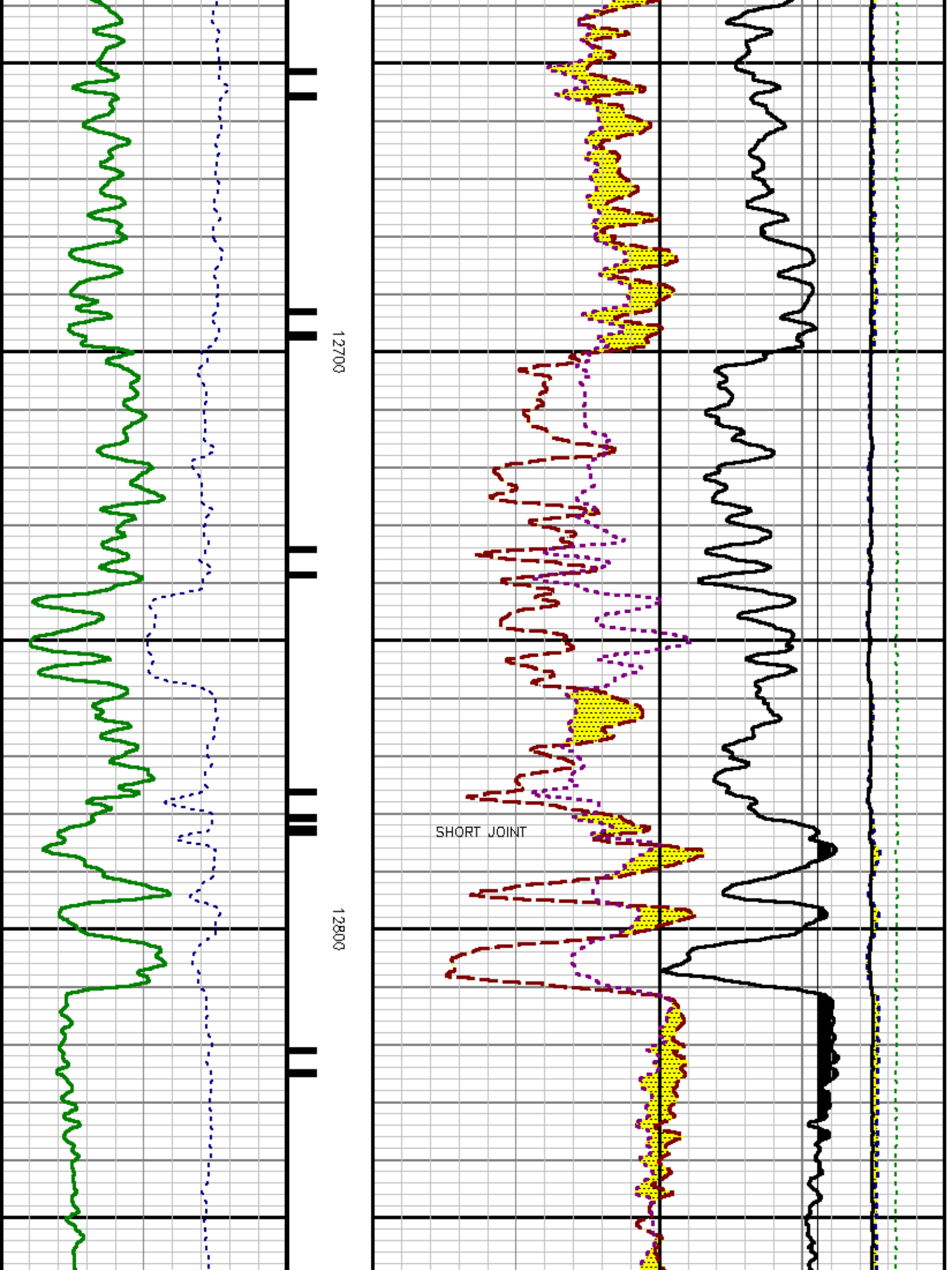
200

12300

12400



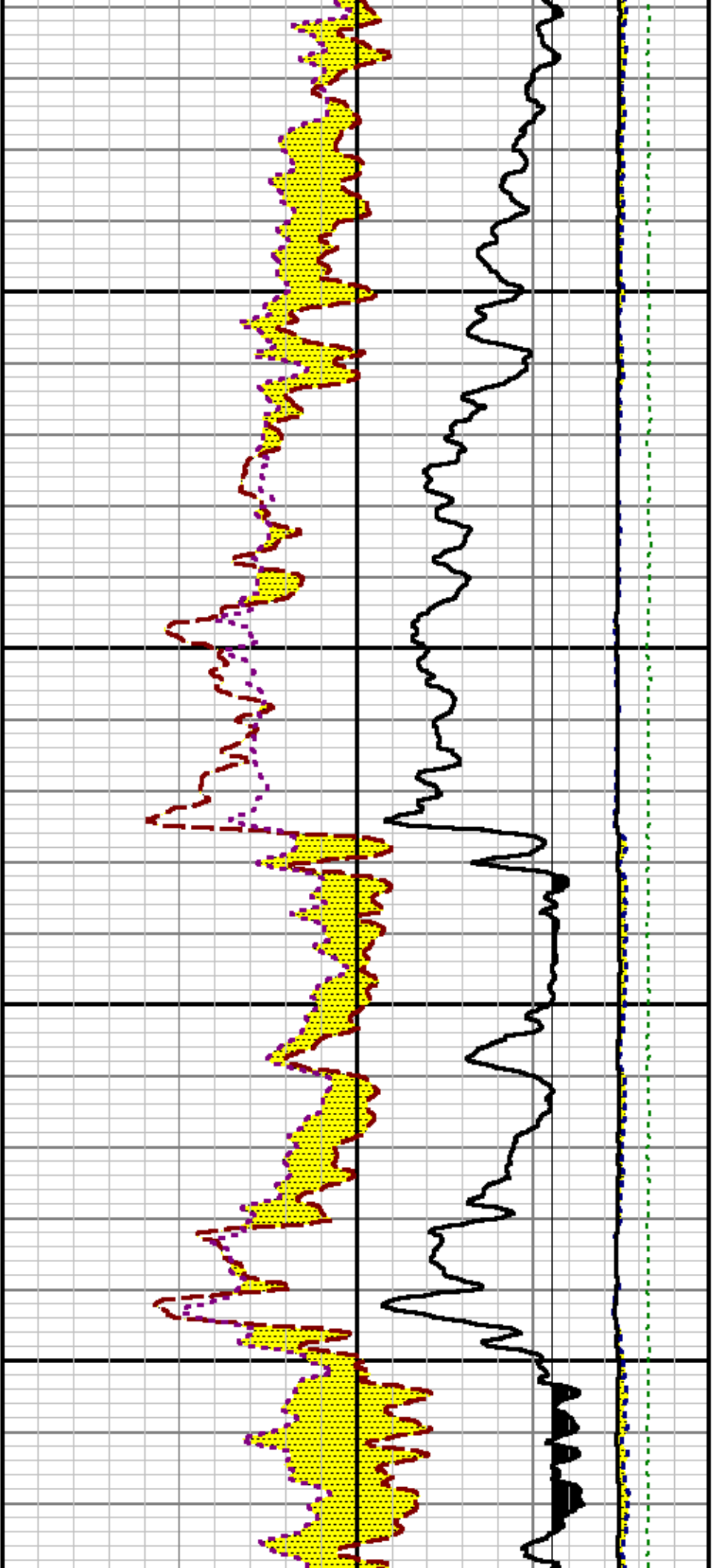




12700

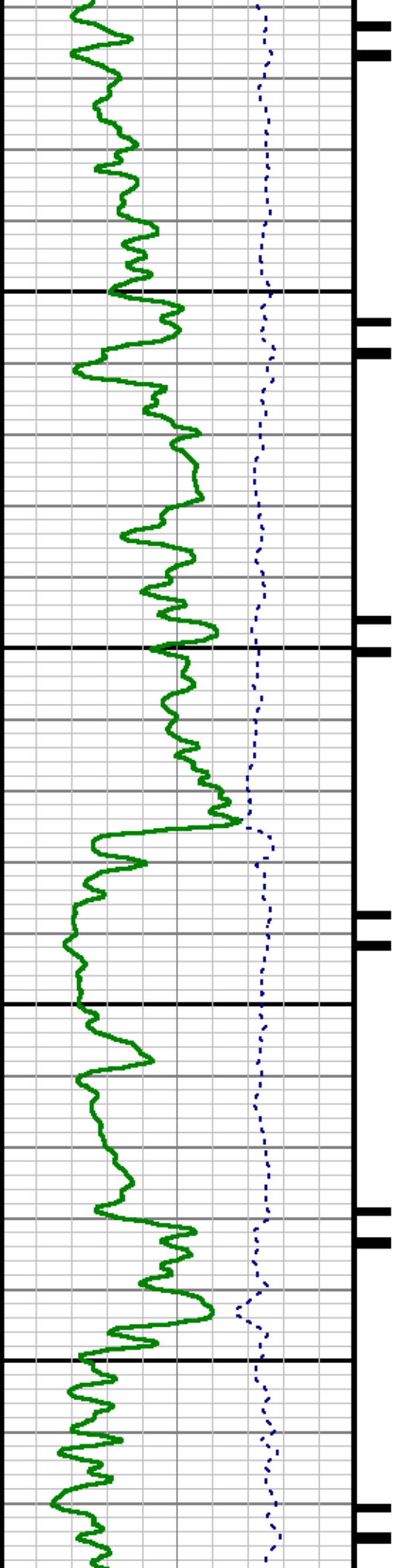
SHORT JOINT

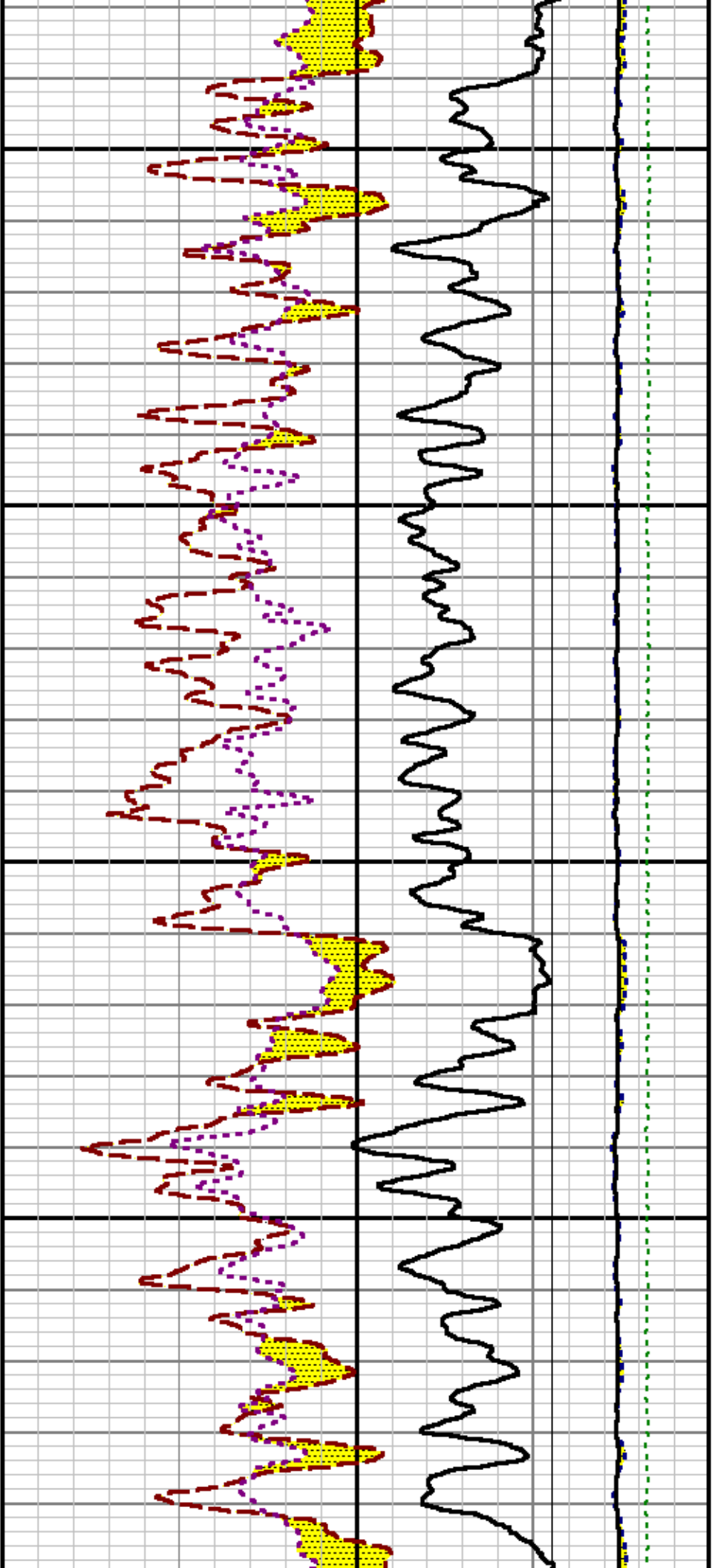
12800



12900

13000

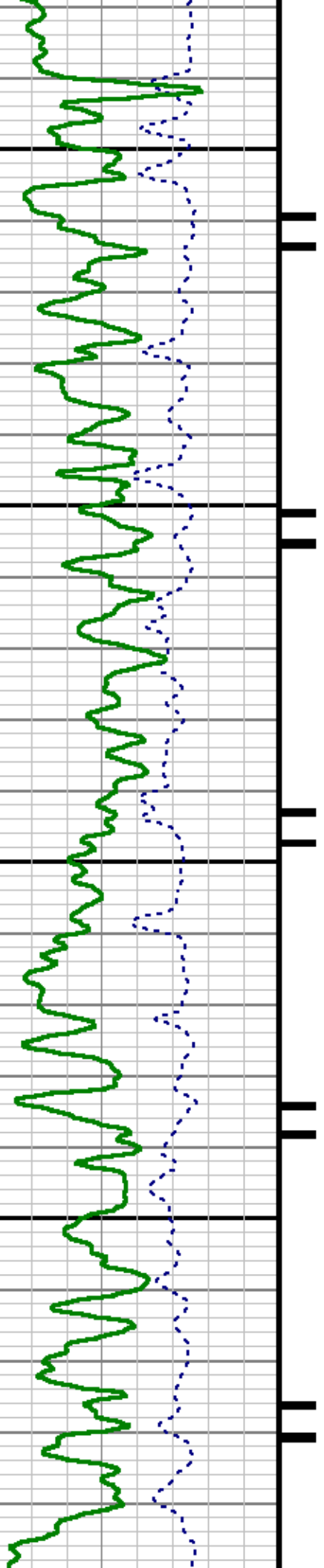


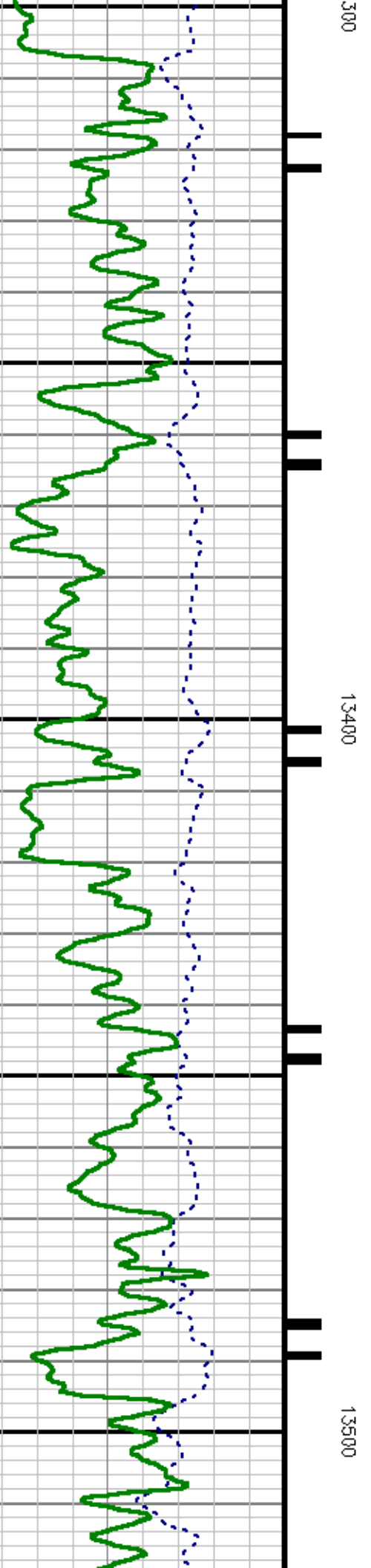
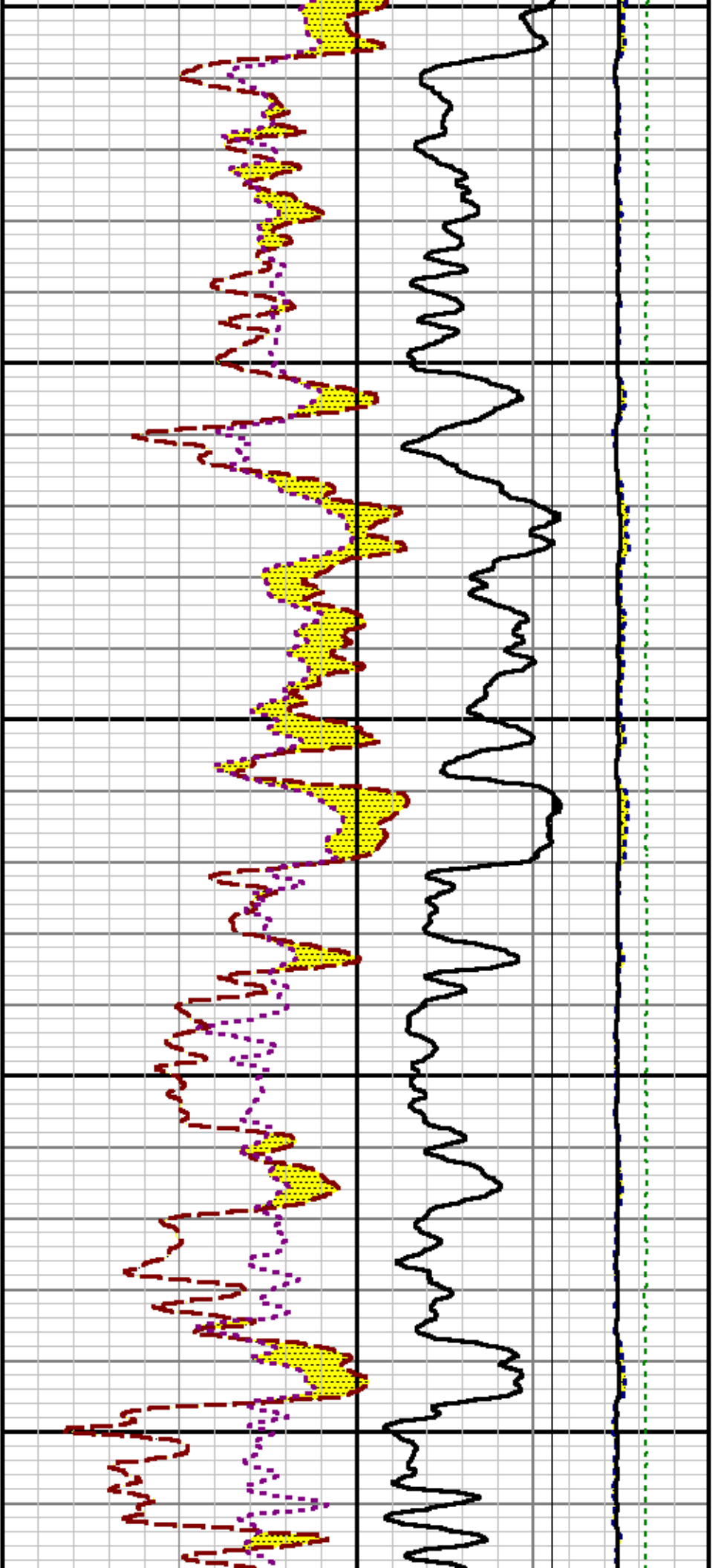


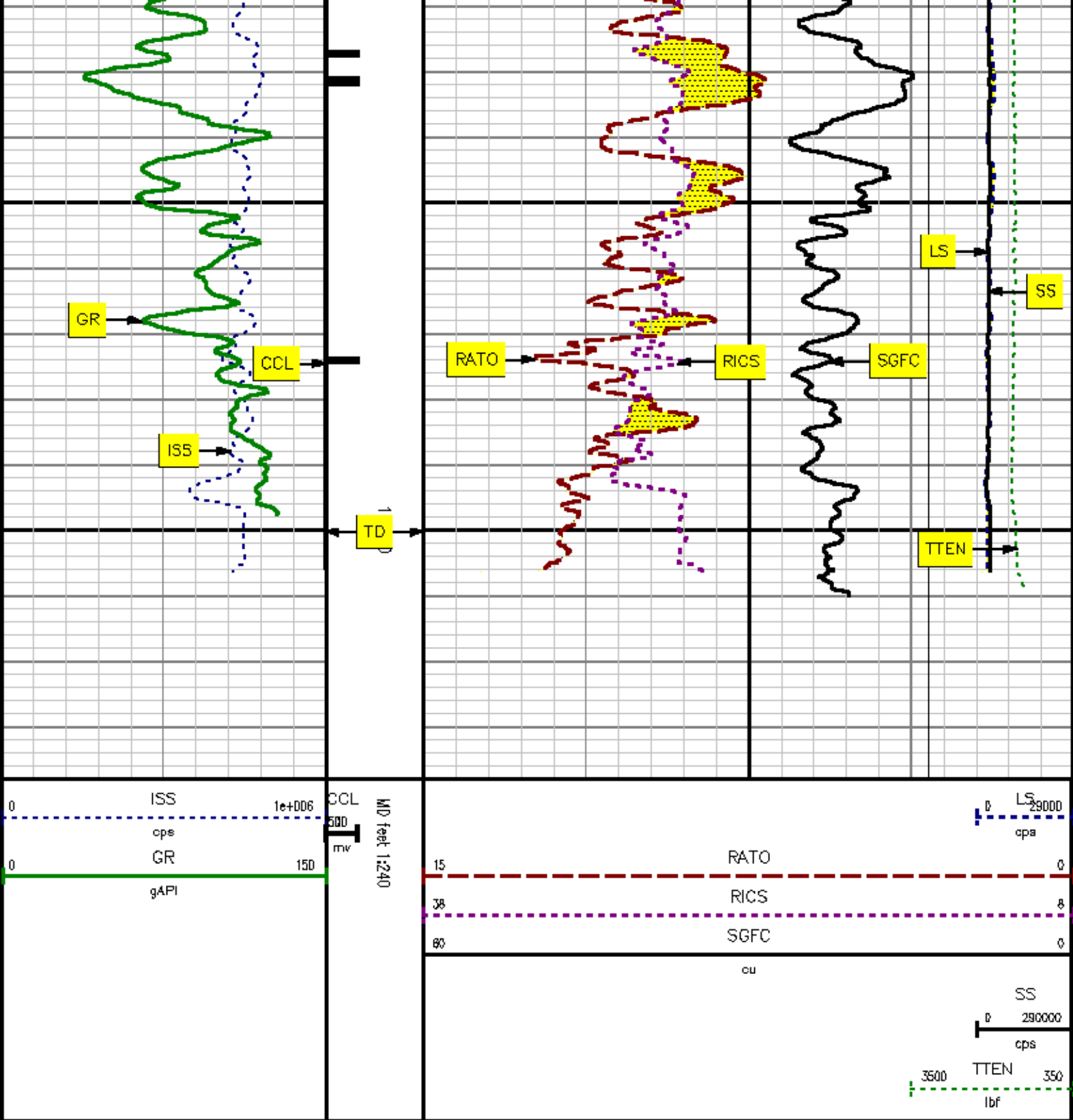
13100

13200

13







REPEAT SECTION

SPL PROCESSING

MEASUREMENT TYPE	PARAMETER	VALUE	UNITS	TOP	BOTTOM
PNC Porosity	Borehole	Cased		10029.750	10529.925
PNC Porosity	Borehole Size	6.125	Inch	10029.750	10529.925
PNC Porosity	Casing Size	4.500	Inch	10029.750	10529.925
PNC Porosity	Gas Filled	Non Gas Filled		10029.750	10529.925
PNC Porosity	Matrix	Sandstone		10029.750	10529.925

DEPTH OFFSETS

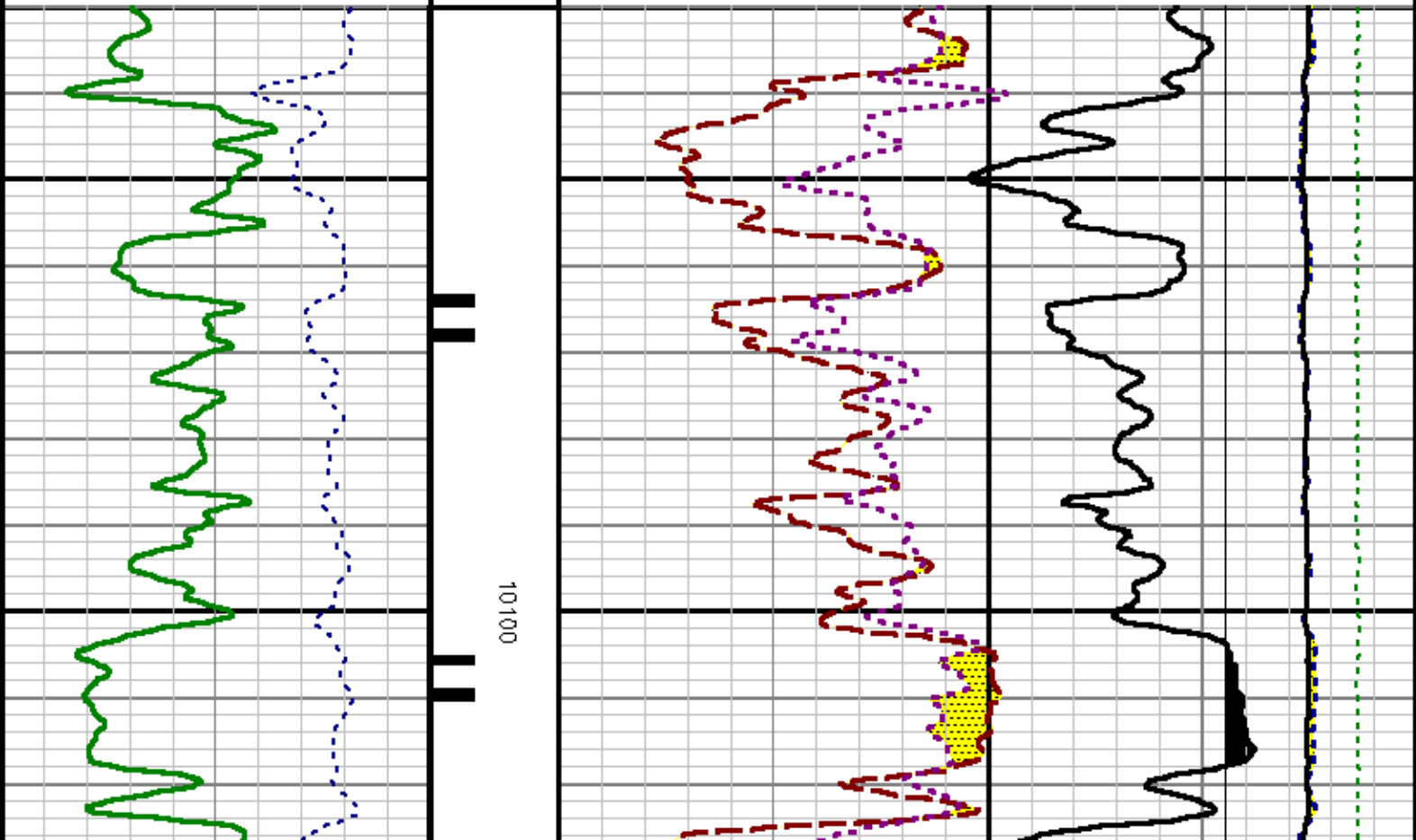
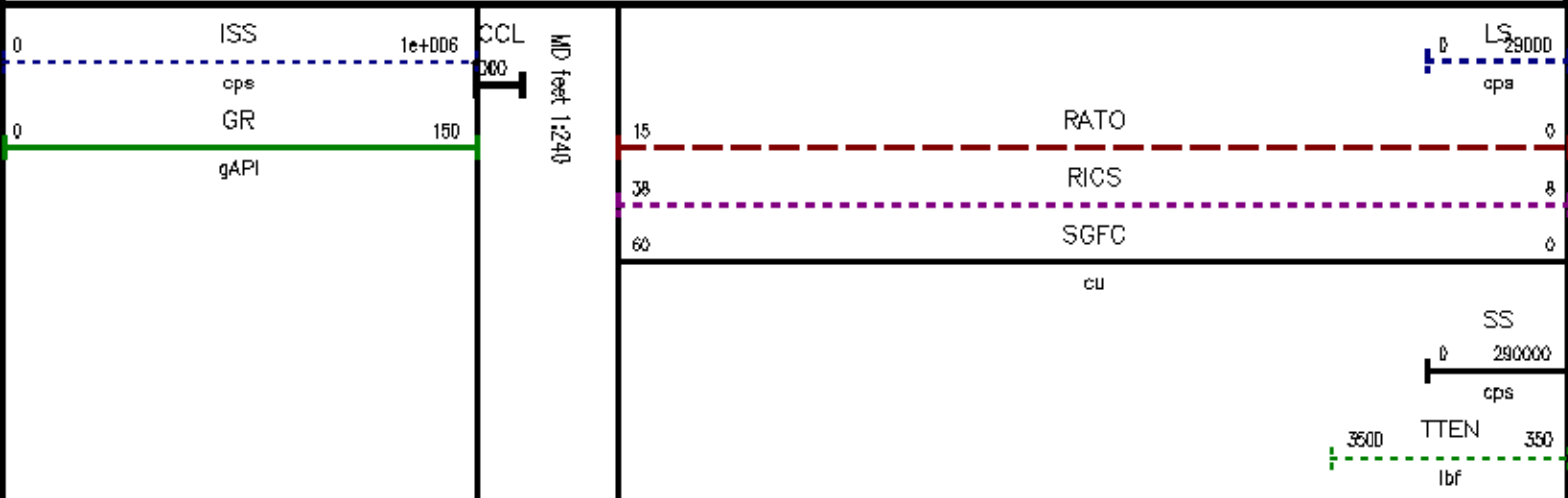
(for Acquired Curves)

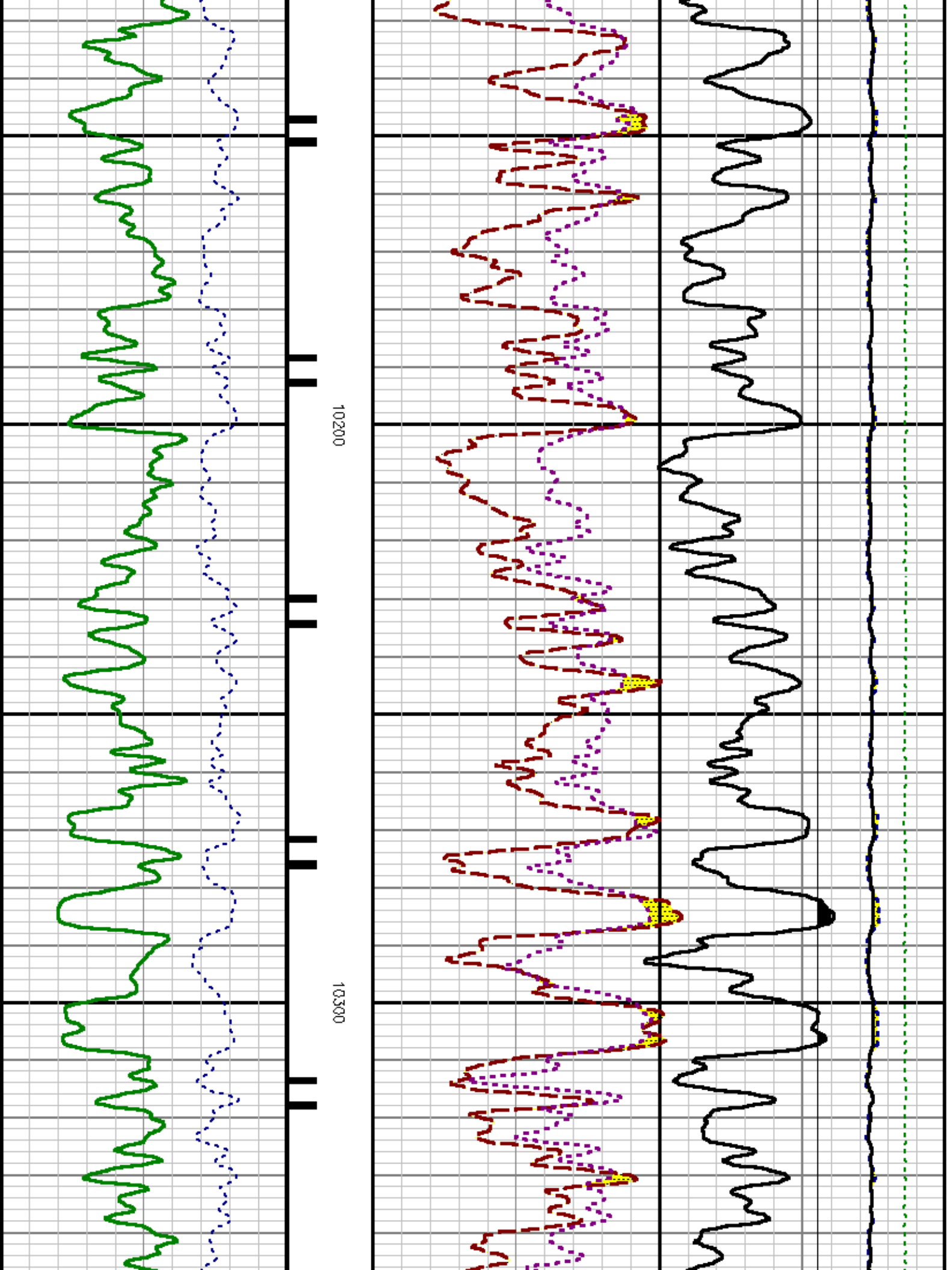
SERIES	DEPTH OFFSET	ACQUIRED CURVES							
8248EA	-14.478	FLTM							
8248EA	-12.478	OCL		OHV					
2812LA	-9.928	GR							
8281XA	-0.662	HVC300	SEQ3	AMA3	AML3	BKX	CXS		
		CPT300	CPT302	CPT303	CPT304	ET3	IXS		
		MCS3	MCS300	QCAL3	RGN3	RICK	SDA3		
		SDL3	SGA3	SGL3	STA3	XS	ASPEC3		
		AMB3	AMF3	CHF3	IXSC	IXSN	RAT023		
		RICXC	RIN13C	RIN23	RIN23C	SD3D	SG3D		
		SGB3	SGF3	WDTH3	CXSR	IXSR	XSR		
		RICKR							
8281XA	-0.250	HVC200	SEQ2	AMA2	AMB2	AMF2	AML2		
		BKL	CHF2	CLS	CPT200	CPT2Q2	CPT2Q3		
		CPT2Q4	ET2	ILS	LS	MCS2	MCS200		
		QCAL2	RGN2	RICL	RONE23	RTW023	SDA2		
		SDL2	SGA2	SGB2	SGF2	SGK2	SGL2		
		STA2	ASPEC2	ILSC	ILSN	WDTH2	RICLC		
		GLSR	ILSR	LSR	RICLR				
8281XA	0.000	GPRS	HVC100	WV	SEQ	SEQ1	AMA1		
		AMB1	AME1	AMF1	AML1	BKS	CHF1		
		CSS	QORB	QORF	CPT100	CPT1Q2	CPT1Q2A		
		CPT1Q2B	CPT1Q2C	CPT1Q3	CPT1Q4	CPT1Q5	ET1		
		G1	G2	GE1S	GE2S	ISS	MCS1		
		MCS100	QA1	QCAL1	QM1	RATO	RAT013		
		RBOR	RGN1	RICS	RIN	RONE	RPOR		
		RTW0	RIN13	RONE13	RTW013	SALB	SC1		
		SDA1	SDL1	SGA1	SGB1	SGBC	SGE1		
		SGF1	SGFC	SGK1	SGL1	SS	SS2		
		STA1	PD1S	PD2S	PD3S	MD1S	MD2S		
		MD3S	DG1S	DG2S	DG3S	PD1M	PD2M		
		PD3M	MD1M	MD2M	MD3M	DG1M	DG2M		
		DG3M	MVS	WA	WVM	FILV	IAM		
		TA	PVM	PVS	IAS	SSTAT	QPD1		
		QPD2	QPD3	QMD1	QMD2	QMD3	QDG1		
		QDG2	QDG3	QMA	QTA	QFILV	QMV		
		QPV	QIA	DERR	DCNT	QPK1	QSA1		

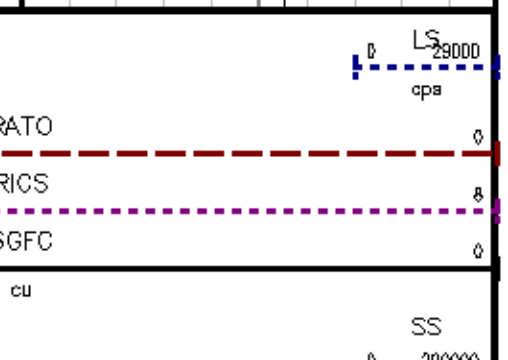
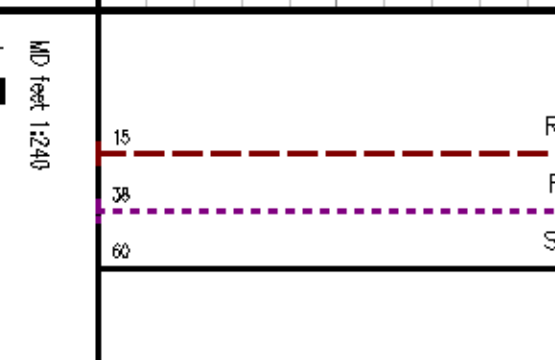
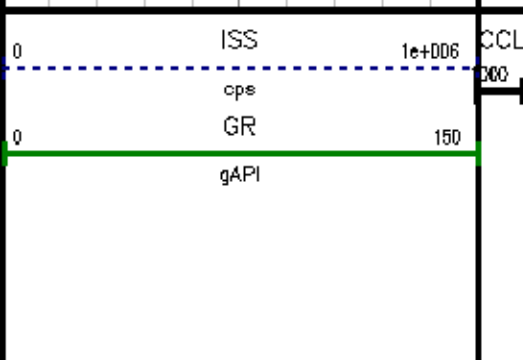
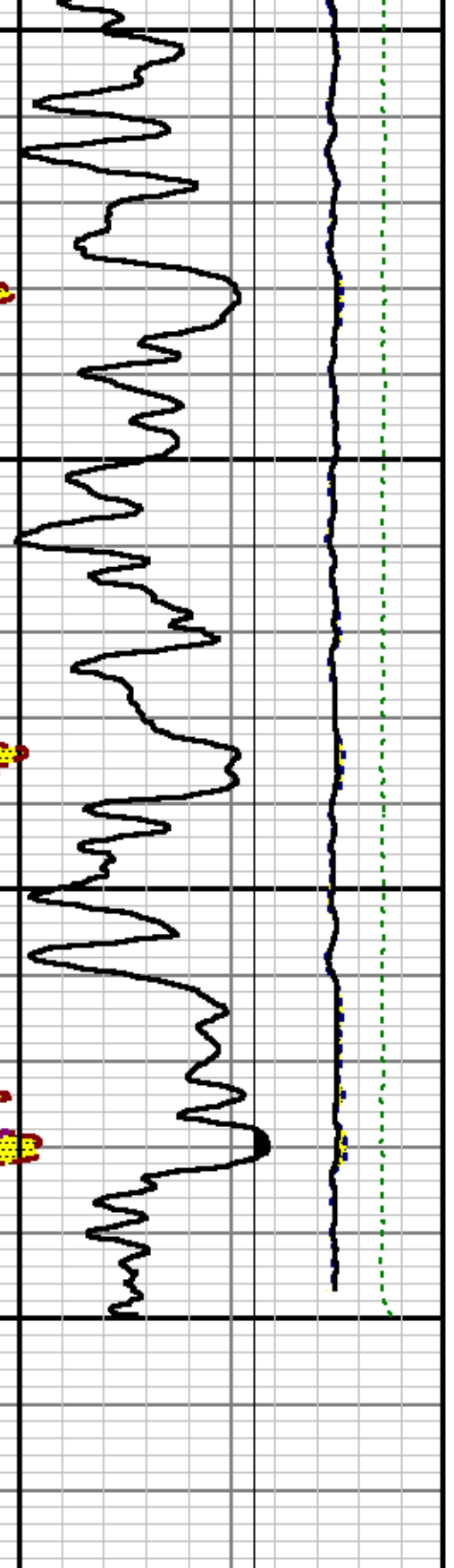
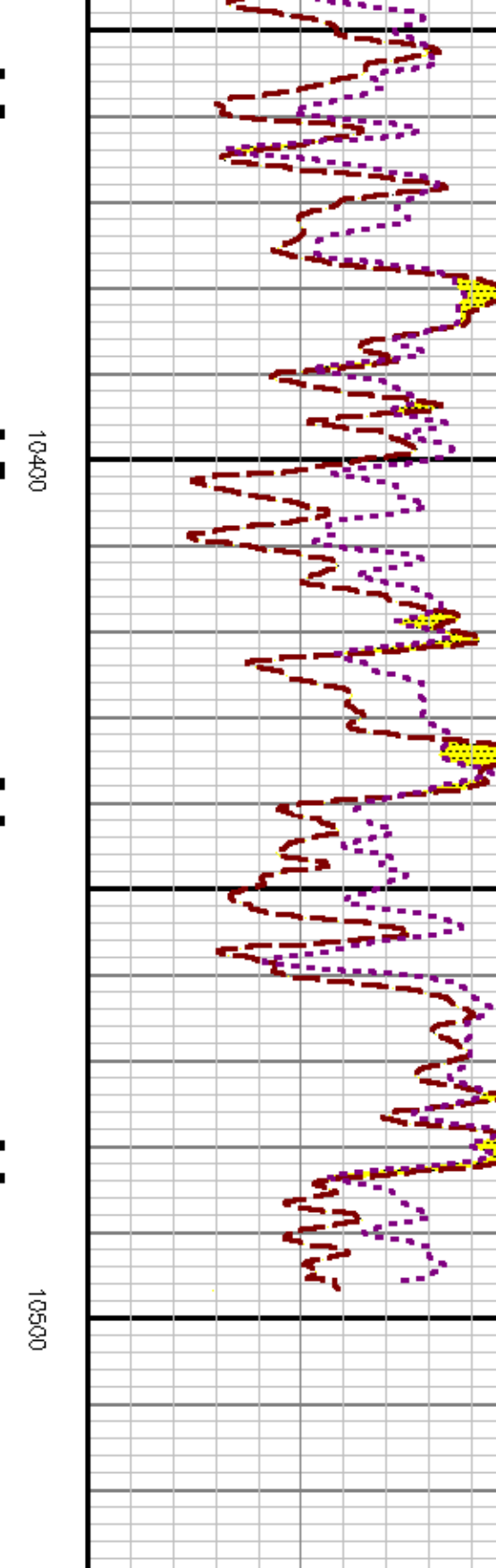
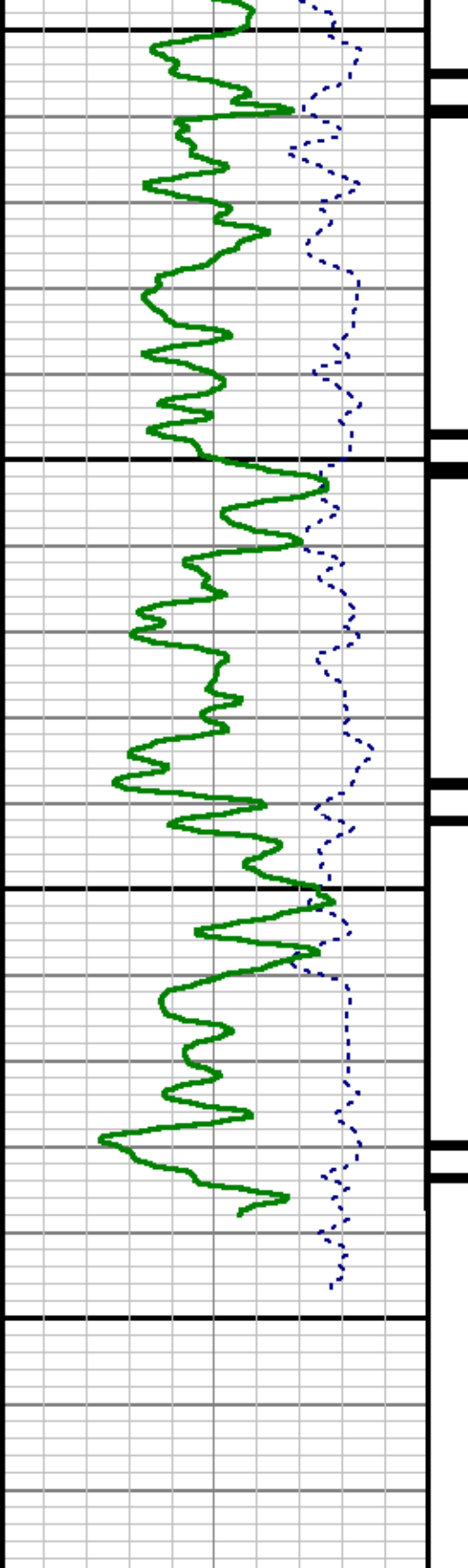
PKS1	ASPEC1	H0C	FE2XC	ISSC	RINC
ISSN	R0EN	WDTH1	RICSC	CSSR	G1R
G2R	ISSR	SSR	SS2R	RATOR	RAT013R
RBORR	RICSR	RINR	RIN13R	RONER	RPORR
RTWOR					
TEN	TTEN				

SYSTEM 0.000

Created by : RPM9, v5.D.D.D
 Plotted by : PlotMgr, v5.4.5D4
 Company : EXXONMOBIL PRODUCTION COMPANY
 Well : PCU 296-5A7
 File Name : d:\well\data\q7rpm\repeat.xtf
 Mode : PlotMgr 5.4.5D4
 Interval : 10030.00 - 10530.00 feet UP
 Created : 7/18/2011 8:27:57 PM







10400

10500

MD feet 1:240

ISS 1e+006
cpe
GR 150
gAPI

RATO 0
RICS 8
SGFC 0
cu

LS 29000
cpe
SS

CALIBRATION SUMMARY

GAMMA RAY

Calibration File: C:\cgsa\cal\ver\GR\636J1.cal

CALIBRATION SUMMARY

DATE/TIME PERFORMED: Mon Jun 20 16:05:41 2011 TOOL SERIES: 2812LA ASSET: 636 SEQ: J1

Calibrator #	Background [cps]	Calibrator On [cps]	Multiplicative	Background [api]	Calibrator On [api]	Differential [api]
S2K DA612	53.71	281.53	0.922	49.51	259.51	210.00

Verification File: C:\cgsa\cal\ver\GR\636J1.VP

PRIMARY VERIFICATION

DATE/TIME PERFORMED: Mon Jun 20 16:10:11 2011 TOOL SERIES: 2812LA ASSET: 636 SEQ: J1

Calibrator #	Background [cps]	Calibrator On [cps]	Multiplicative	Background [api]	Calibrator On [api]	Differential [api]
S2K DA612	54.56	280.29	0.922	50.29	258.38	208.07

PNC

Calibration File: C:\cgsa\cal\ver\PNC\753JU.cal

PNC 3D CALIBRATION SUMMARY

DATE/TIME PERFORMED: Mon Jul 11 10:31:18 2011 TOOL SERIES: 8281XA ASSET: 753 SEQ: JU

Calibrator #	Source #
SHOP SHOP	8281AA 11710723

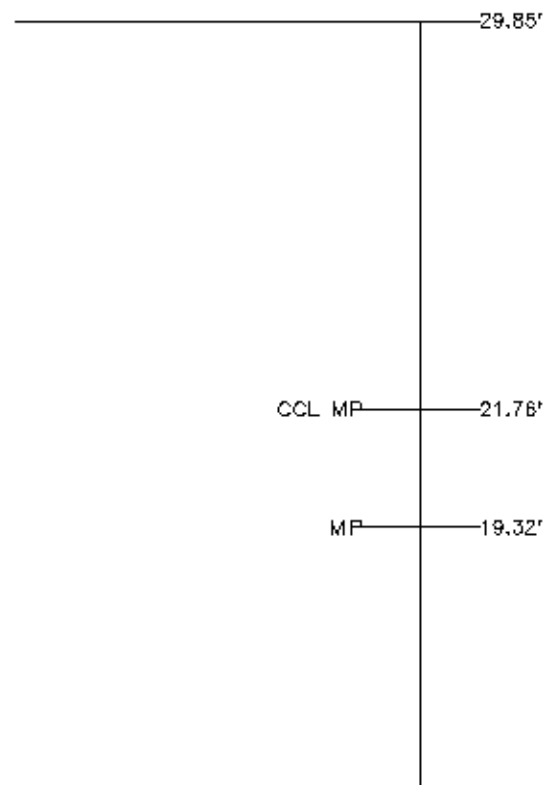
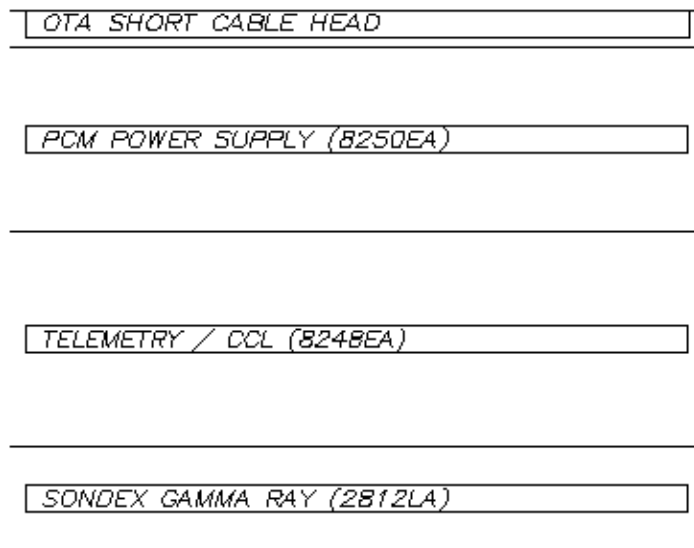
	ISS	Mtr Vltz (V)	SS Gain	LS Gain	XLS Gain	EA Temp (degF)	Sync Delay (usec)	RCAL
Raw Data	821620	128.00	2197.00	2383.00	2148.00	139.17	15.00	1.0441
Interpolated	1300000	147.41	2218.86	2379.82	2145.10			

	ISS	BKS	BKL	BKX	SGA 1	SDA 1	SGA 2	SDA 2
Raw Data	821620	6327.36	1022.64	167.43	25.81	0.13	24.26	0.26
					25.35 26.15	0.00 0.20	23.60 24.80	0.00 0.40

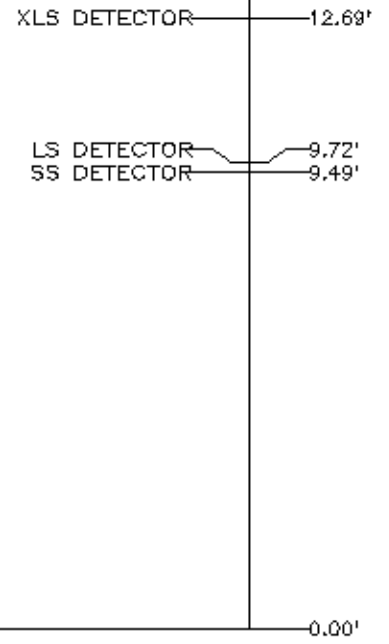
	ISS	ILS	IXS	SS	SS2	LS	CSS	CLS
Raw Data	821620	184376.05	27743.57	97232.09	34575.96	9479.68	58945.88	15230.59
Fit Quality %		1.86	1.80	1.12	1.07	1.77	1.02	1.74

	ISS	RBOR	RIN ISS/ILS	RIN13 ISS/IXS	RICS ISS/CSS	RATO SS/LS	RTWO SS2/LS	RONE CSS/CLS
Raw Data	821620	1.44	4.46	29.62	13.94	10.26	3.65	3.87
		1.42 1.45	3.55 5.21	22.20 32.10	10.99 16.34	10.06 11.10	3.57 3.95	3.76 4.22
Fit Quality %		0.07	1.23	1.24	0.21	0.93	0.93	0.95
Reduced	1415152	1.44	4.39	29.17	13.96	10.10	3.59	3.81
		1.42 1.45	4.33 5.52	27.60 32.70	13.70 16.34	10.06 11.10	3.57 3.95	3.76 4.22

TOOL DIAGRAM



RESERVOIR PERFORMANCE MONITOR (8281XA)



Total Length: 29.85'
 Total Weight: Not Available
 Max Diameter: 0' 1.70"



Baker Atlas



Company	EXXONMOBIL PRODUCTION COMPANY		
Well	PCU 296-5A7		
Field	PICEANCE CREEK		
County	RIO BLANCO	State	COLORADO

File No:	CH039003
API No:	06103112430000

Location:	
SHL: 707' FWL & 533' FWL	
SEC: 5	TWP: 2S RGE: 96W

Elevations	
KB	7339.2 ft
DF	7338.2 ft
GL	7308 ft

--