

Schlumberger

Company: **ExxonMobil Production Corp.**

Well: **PCU 296-5A6**

Field: **Piceance Creek**

County: **Rio Blanco**

State: **Colorado**

IMAGING BEHIND CASING ULTRASONIC TOOL GAMMA RAY - CCLU

County: Rio Blanco
 Field: Piceance Creek
 Location: SHL: 5-T2S-R96W
 Well: PCU 296-5A6
 Company: ExxonMobil Production Corp.

LOCATION		SHL: 5-T2S-R96W	Elev.: K.B. 7324.20 ft G.L. 7294.00 ft D.F. 7323.20 ft
Permanent Datum:	GROUND LEVEL	Elev.: 7294.00 ft	
Log Measured From:	KELLY BUSHING	30.20 ft	above Perm. Datum
Drilling Measured From:	KELLY BUSHING		
API Serial No.	Section 5	Township 2S	Range 96W
05-103-11240-00			

PVT DATA			
	Run 1	Run 2	Run
Oil Density			
Water Salinity			
Gas Gravity			
Bo			
Bw			
1/Bq			
Bubble Point Pressure			
Bubble Point Temperature			
Solution GOR			
Maximum Deviation			
CEMENTING DATA			
Primary/Squeeze	Primary		
Casing String No			
Lead Cement Type			
Volume			
Density	11 lbm/gal		
Water Loss			
Additives			
Tail Cement Type			
Volume			
Density			
Water Loss			
Additives			
Expected Cement Top			

Logging Date	13-Mar-2011		
Run Number	1		
Depth Driller	10478 ft		
Schlumberger Depth	10440 ft		
Bottom Log Interval	10440 ft		
Top Log Interval	4150 ft		
Casing Fluid Type	Water based mud		
Salinity			
Density	9.4 lbm/gal		
Fluid Level	0 ft		
BIT/CASING/TUBING STRING			
Bit Size	8.875 in		
From	30 ft		
To	10478 ft		
Casing/Tubing Size	7.000 in		
Weight	26 lbm/ft		
Grade			
From	30 ft		
To	10478 ft		
Maximum Recorded Temperatures			
Logger On Bottom	Time	3:45	
Unit Number	Location	2379 Vernal	
Recorded By	Mike Septon		
Witnessed By	Ken		

Logging Date	13-Mar-2011		
Run Number	1		
Depth Driller	10478 ft		
Schlumberger Depth	10440 ft		
Bottom Log Interval	10440 ft		
Top Log Interval	4150 ft		
Casing Fluid Type	Water based mud		
Salinity			
Density	9.4 lbm/gal		
Fluid Level	0 ft		
BIT/CASING/TUBING STRING			
Bit Size	8.875 in		
From	30 ft		
To	10478 ft		
Casing/Tubing Size	7.000 in		
Weight	26 lbm/ft		
Grade			
From	30 ft		
To	10478 ft		
Maximum Recorded Temperatures			
Logger On Bottom	Time	3:45	
Unit Number	Location	2379 Vernal	
Recorded By	Mike Septon		
Witnessed By	Ken		

DEPTH SUMMARY LISTING

Date Created: 13-MAR-2011 6:33:12

Depth System Equipment

Depth Measuring Device	Tension Device	Logging Cable
Type: IDW-B Serial Number: 600807 Calibration Date: 27-OCT-2010 Calibrator Serial Number: 33 Calibration Cable Type: 7-46P Wheel Correction 1: -6 Wheel Correction 2: -6	Type: CMTD-B/A Serial Number: 8093 Calibration Date: 12-MAR-2011 Calibrator Serial Number: 1159 Number of Calibration Points: 10 Calibration RMS: 22 Calibration Peak Error: 35	Type: 7-46P XS Serial Number: 709025 Length: 24000 FT Conveyance Method: Wireline Rig Type: LAND

Depth Control Parameters

Log Sequence:	First Log In the Well
Rig Up Length At Surface:	198.00 FT
Rig Up Length At Bottom:	198.00 FT
Rig Up Length Correction:	0.00 FT
Stretch Correction:	3.00 FT
Tool Zero Check At Surface:	0.00 FT

Depth Control Remarks

1. SCHLUMBERGER DEPTH CONTROL STANDARDS FOLLOWED
2. IDW USED AS PRIMARY DEPTH CONTROL, Z-CHART USED AS SECONDARY DEPTH CONTROL
- 3.
- 4.
- 5.
- 6.

DISCLAIMER

THE USE OF AND RELIANCE UPON THIS RECORDED-DATA BY THE HEREIN NAMED COMPANY (AND ANY OF ITS AFFILIATES, PARTNERS, REPRESENTATIVES, AGENTS, CONSULTANTS AND EMPLOYEES) IS SUBJECT TO THE TERMS AND CONDITIONS AGREED UPON BETWEEN SCHLUMBERGER AND THE COMPANY, INCLUDING: (a) RESTRICTIONS ON USE OF THE RECORDED-DATA; (b) DISCLAIMERS AND WAIVERS OF WARRANTIES AND REPRESENTATIONS REGARDING COMPANY'S USE OF AND RELIANCE UPON THE RECORDED-DATA; AND (c) CUSTOMER'S FULL AND SOLE RESPONSIBILITY FOR ANY INFERENCE DRAWN OR DECISION MADE IN CONNECTION WITH THE USE OF THIS RECORDED-DATA.

OTHER SERVICES1 OS1: NONE OS2: OS3: OS4: OS5:	OTHER SERVICES2 OS1: OS2: OS3: OS4: OS5:
REMARKS: RUN NUMBER 1	REMARKS: RUN NUMBER 2
This is the first run in the well	
Toolstring ran as per toolsketch	
Tool centralized with 2 in-line centralizers and 2 GEMCOs	
Neutron tool ran for GR only	
Logging speed: 1800 ft/hr	
Expected casing thickness: .362"	

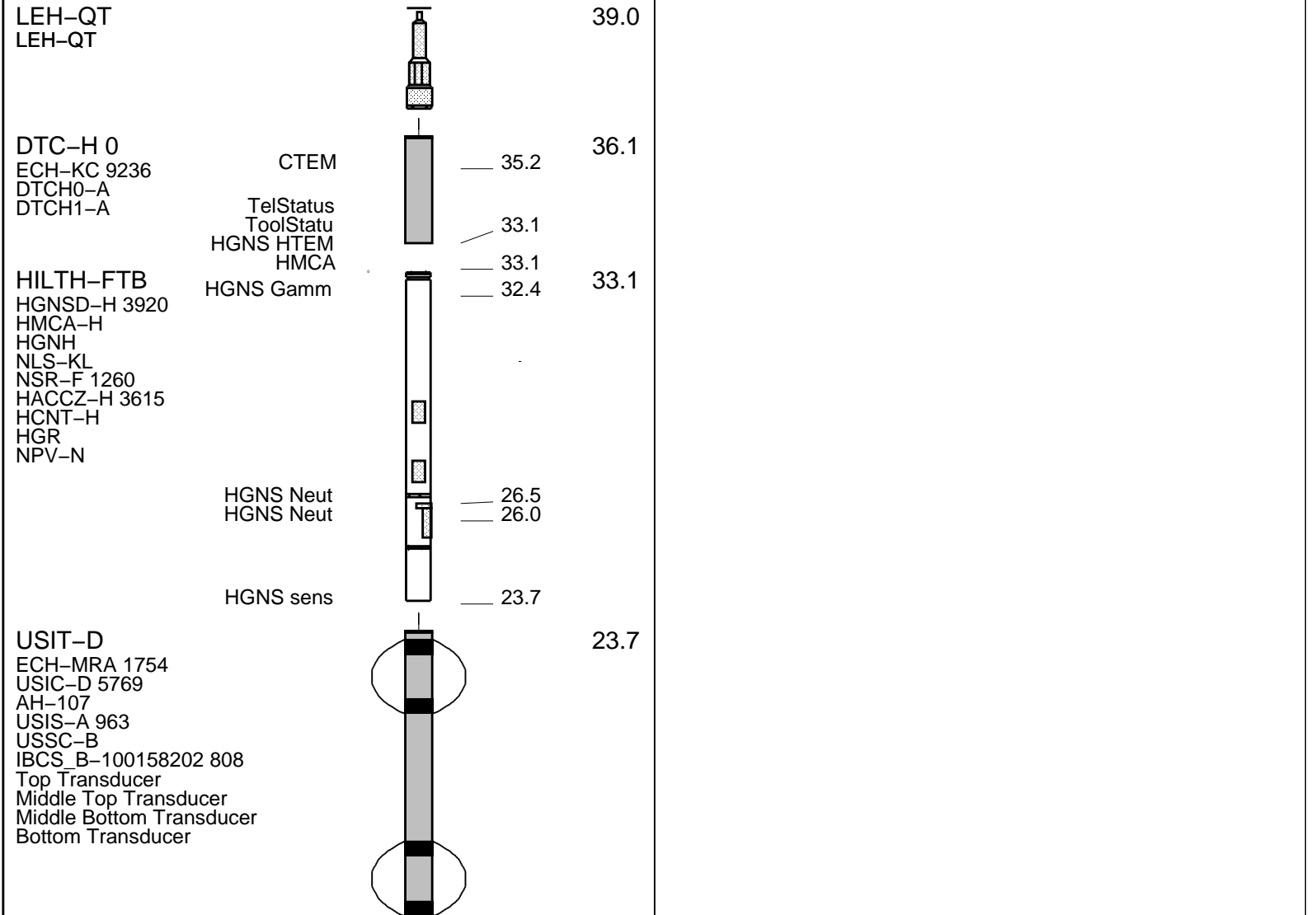
Expected casing ID: 6.276"	
IBC transducer angles set to 33 Deg	
Expected attenuation in free fluid behind casing: 59 db/m	

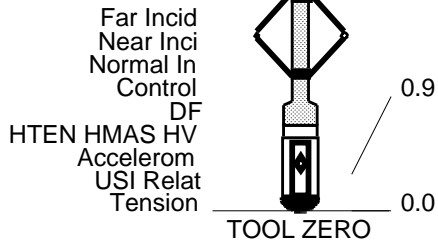
RUN 1			RUN 2		
SERVICE ORDER #:	BEHA-00048		SERVICE ORDER #:		
PROGRAM VERSION:	17C0-154		PROGRAM VERSION:		
FLUID LEVEL:	0 ft		FLUID LEVEL:		
LOGGED INTERVAL	START	STOP	LOGGED INTERVAL	START	STOP

EQUIPMENT DESCRIPTION

RUN 1	RUN 2
SURFACE EQUIPMENT	
GSR-U/Y NCT-B CNB-AB NCS-VB WITM (DTS)-A	

DOWNHOLE EQUIPMENT





MAXIMUM STRING DIAMETER 7.50 IN
 MEASUREMENTS RELATIVE TO TOOL ZERO
 ALL LENGTHS IN FEET



MAIN PASS

MAXIS Field Log

Company: ExxonMobil Production Corp. Well: PCU 296-5A6

Input DLIS Files

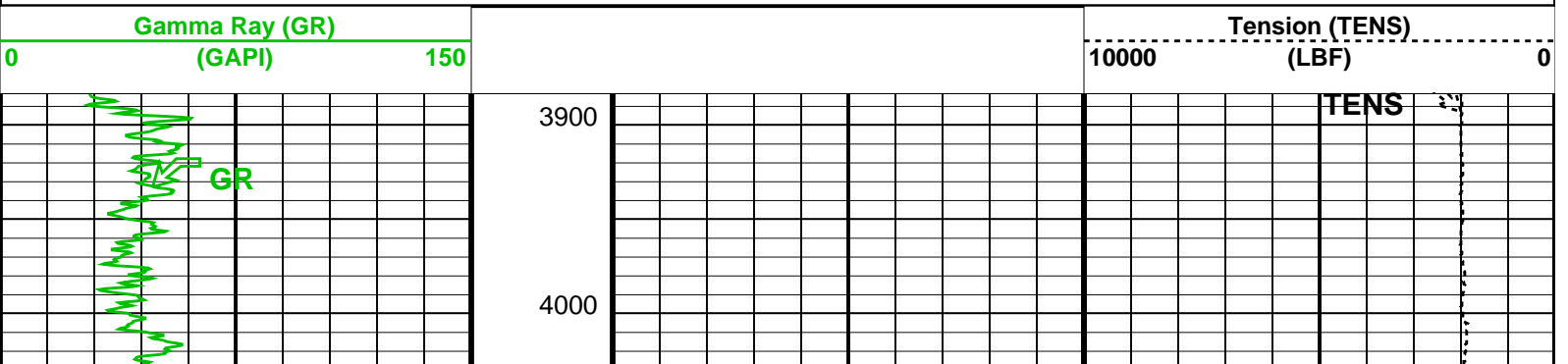
USI_TLD_MCFL_CNL_022PUP FN:21 16-Jun-2011 10:39 10440.0 FT 3883.0 FT

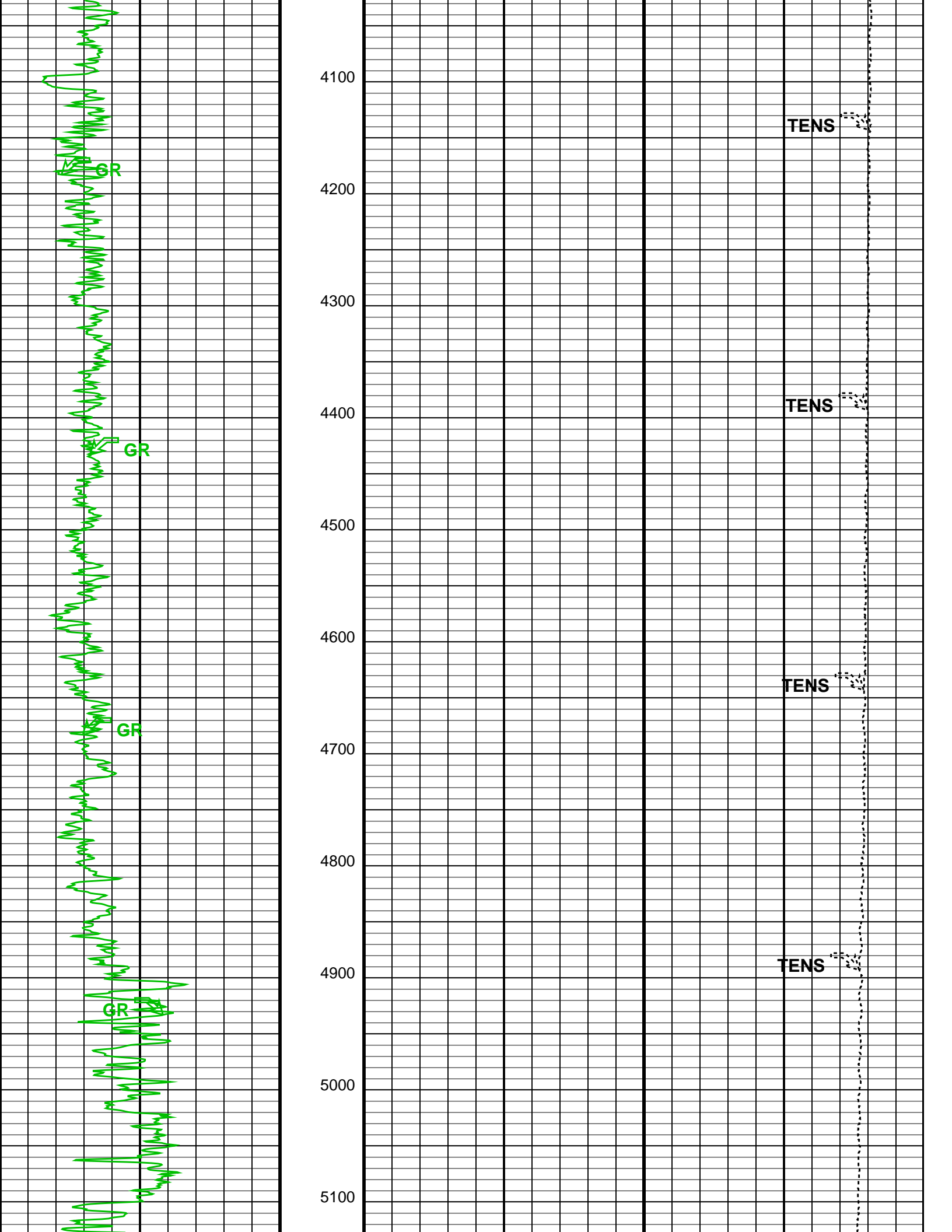
Output DLIS Files

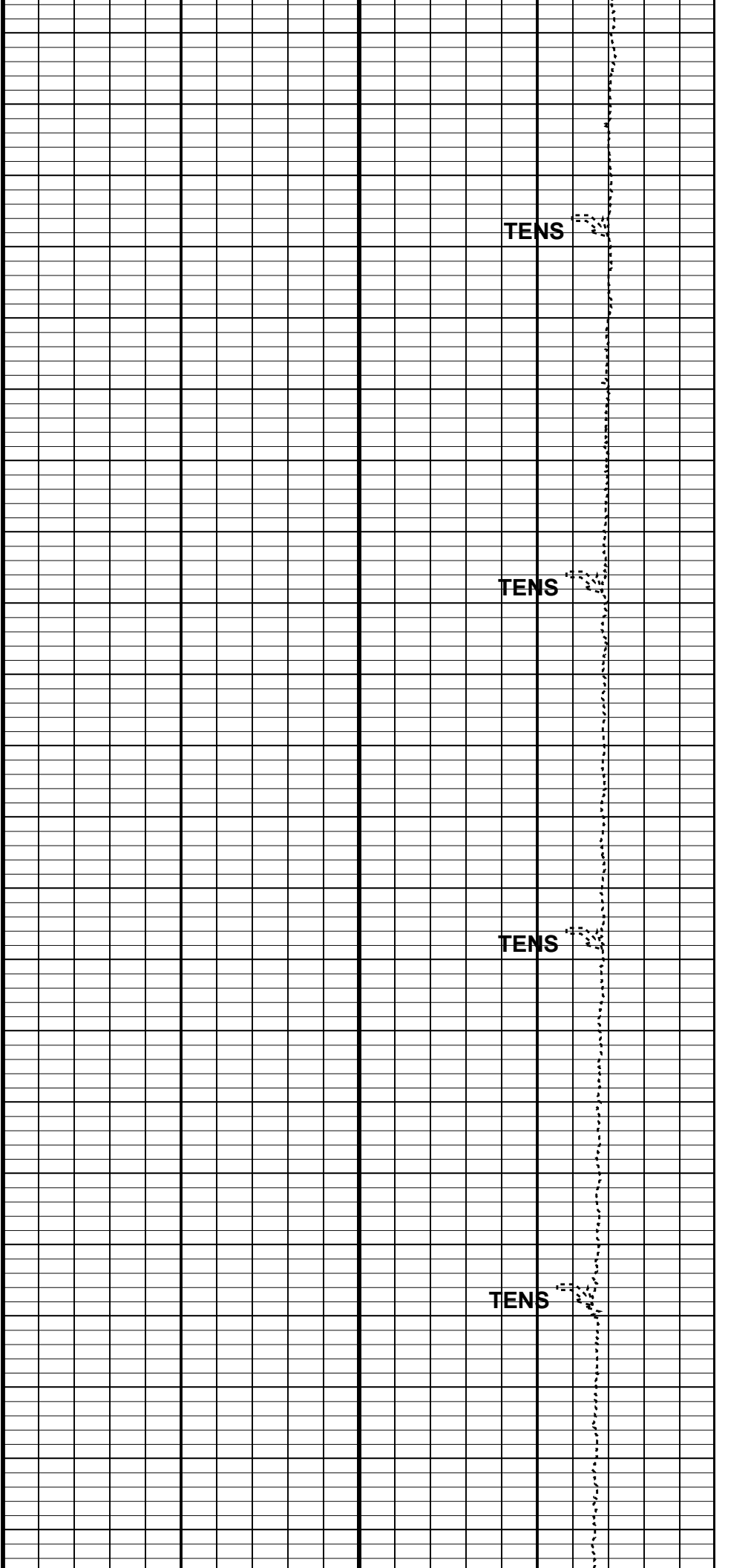
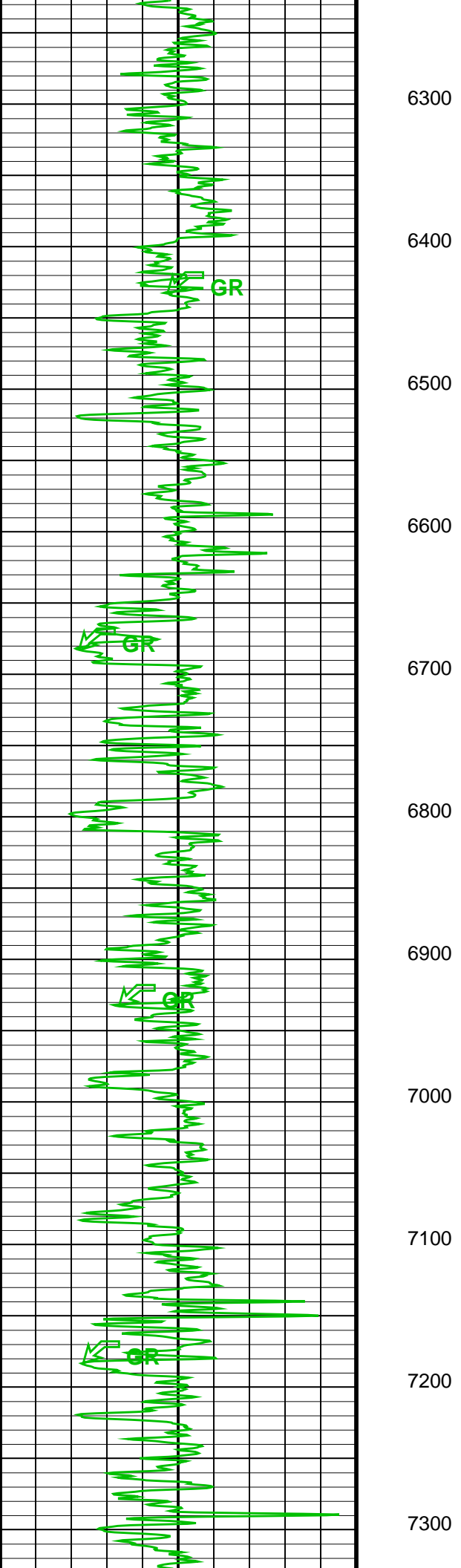
DEFAULT USI_TLD_MCFL_CNL_002PUP FN:1 PRODUCER 16-Jun-2011 12:52 10440.0 FT 3883.0 FT

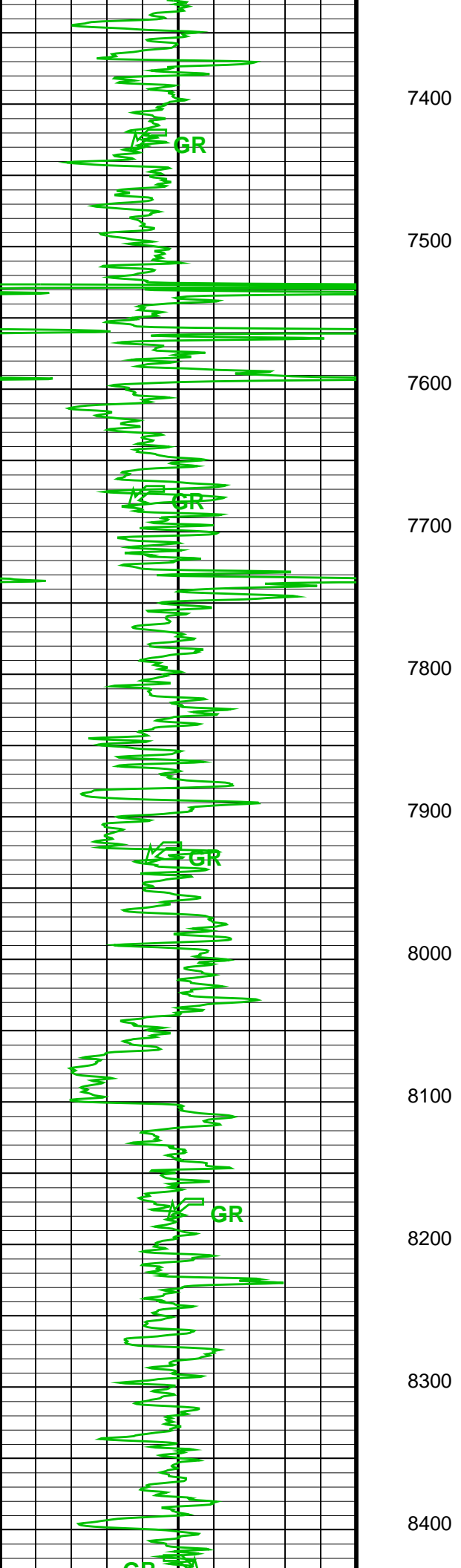
OP System Version: 17C0-154

USIT-D 17C0-154 HILTH-FTB 17C0-154
 DTC-H 17C0-154









7400

7500

7600

7700

7800

7900

8000

8100

8200

8300

8400

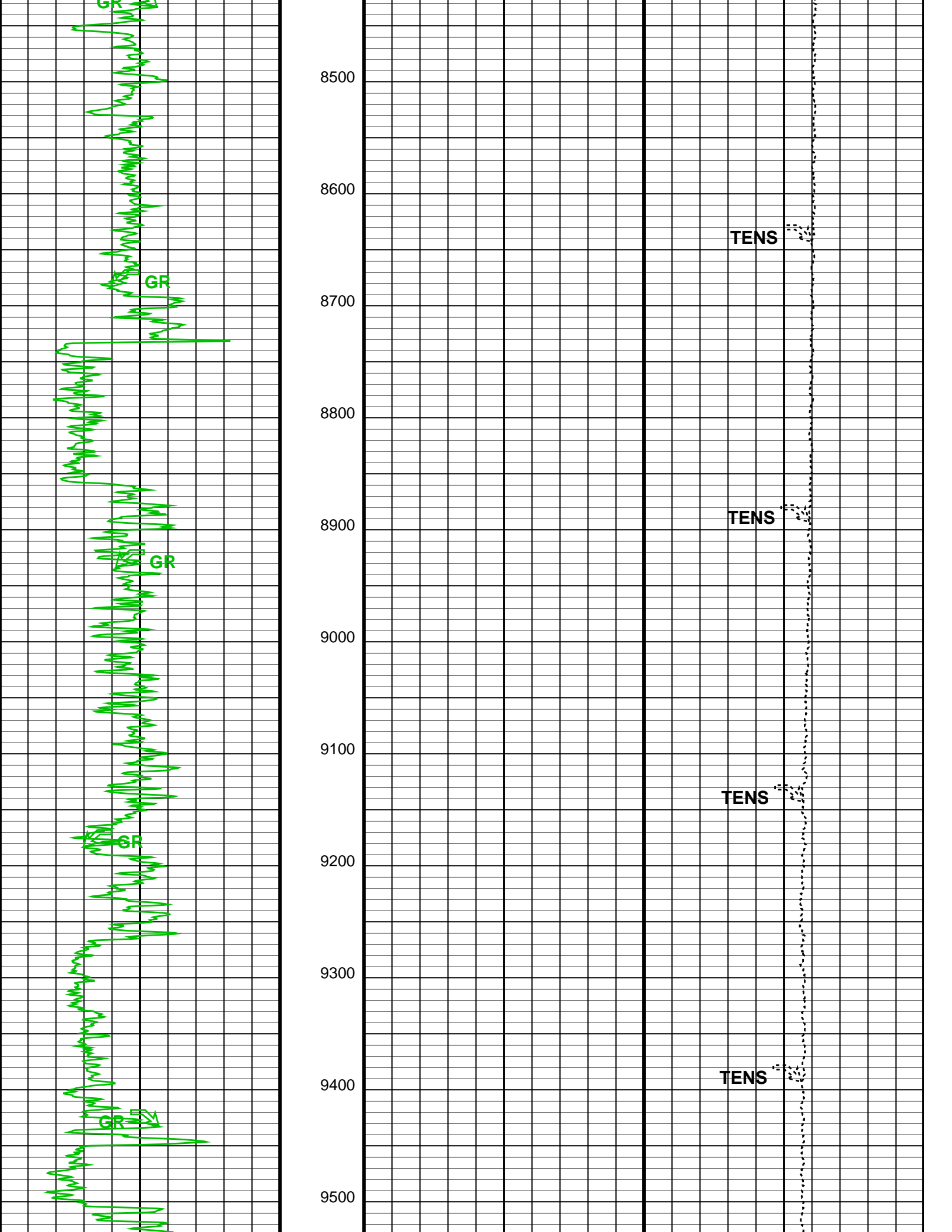
TENS

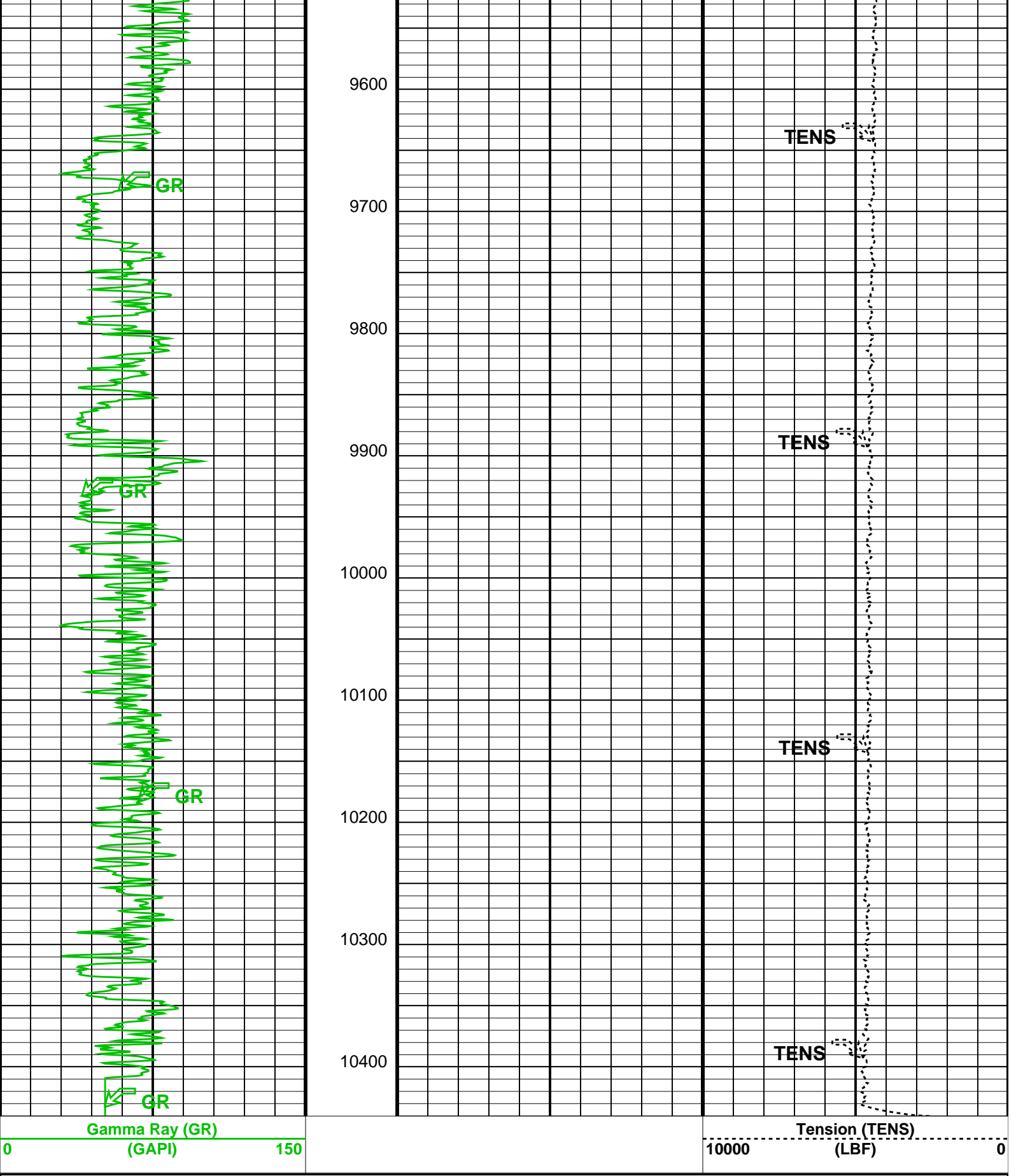
TENS

TENS

TENS

TENS





Parameters

DLIS Name	Description	Value
DO	System and Miscellaneous	
PP	Depth Offset for Playback	0.0 FT
	Playback Processing	NORMAL

OP System Version: 17C0-154

USIT-D	17C0-154	HILTH-FTB	17C0-154
DTC-H	17C0-154		

Input DLIS Files

USI_TLD_MCFL_CNL_022PUP	FN:21	16-Jun-2011 10:39	10440.0 FT	3883.0 FT
-------------------------	-------	-------------------	------------	-----------

Output DLIS Files

DEFAULT	USI_TLD_MCFL_CNL_002PUP	FN:1	PRODUCER	16-Jun-2011 12:52
---------	-------------------------	------	----------	-------------------

Company: **ExxonMobil Production Corp.**

Schlumberger

Well: **PCU 296-5A6**
Field: **Piceance Creek**
County: **Rio Blanco**
State: **Colorado**

IMAGING BEHIND CASING
ULTRASONIC TOOL
GAMMA RAY - CCLU