



Baker Atlas

RESERVOIR PERFORMANCE MONITOR

File No: CH038002
 Company: EXXONMOBIL PRODUCTION COMPANY
 Well: POU 296-5A6
 Field: PICEANCE CREEK
 API No.: 0510311240000
 Country: RIO BLANCO
 State: COLORADO

Location: 54L: 882' PUL & 535' PUL
 SEC: 5 TWP: 25 RGE: 88R
 Other Services: BOND

Permament Datum: G.L. Elevation: 7309 ft
 Log Measured From: K.B. 30.2 ft Above P. D.
 Drill Measured From: KELLY BISHING
 Elevations: KB 7339.2 ft, DF 7339.2 ft, GL 7309 ft

Date	15-JULY-2011
Run	ONE
Service Order	575323
Depth Driller	13903 ft
Depth Logger	13814 ft
Bottom Logged Interval	13814 ft
Top Logged Interval	10502 ft
Time Started	13:30
Time Finished	19:30
Operator Rig Time	8 hrs
Type of Fluid in Hole	WATER
Fluid Density	N/A
Fluid Salinity	N/A
Fluid Level	PULL
Logged Cement Top	N/A
Wellhead Pressure	0 psf
Maximum Hole Deviation	N/A
Nominal Logging Speed	10 fpm
Maximum Recorded Temperature	288 degF
Reference Log	BAKER ATLAS/BSMD
Reference Log Date	7-19-11
Equipment	4271 GRAND JOT, CO
Recorded By	TIM KAUTT
Witnessed By	MR. JIM PETERSON

- FOLD HERE

In making interpretations of logs, our employees will give the customer the benefit of their best judgement. But since all interpretations are opinions based on inferences from electrical or other measurements, we cannot, and we do not guarantee the accuracy or correctness of any interpretation. We shall not be liable or responsible for any loss, cost, damages, or expenses whatsoever incurred or sustained by the customer resulting from any interpretation made by any of our employees.

Bit Size	From	To
9.875 in		
8.125 in		

Size	Weight	Grade	From	To
7 in	28 lbm/ft	P-110	SURFACE	10554 ft
4.5 in	15.1 lbm/ft	P-110	SURFACE	13903 ft

Remarks
 Log is correlated to the Baker Atlas Bond log dated 7-19-11
 The crew of 4271 Thanks You.

Run	Trip	Tool	Series Number	Serial Number	Position

1	1	RPM	8281FA	10460082	FREE
1	1	RPM	8281PA	11802753	FREE
1	1	RPM	8281EA	10273848	FREE
1	1	GAMMA RAY	2812LA	1171636	FREE
1	1	CCL	8248EA	10586851	FREE
1	1	PCM	8250EA	0000	FREE

MAIN SECTION
IN PNC 3-D MODE

SPL PROCESSING

MEASUREMENT TYPE	PARAMETER	VALUE	UNITS	TOP	BOTTOM
PNC Porosity	Borehole	Cased		10499.754	13837.000
PNC Porosity	Borehole Size	9.875	inch	10499.754	10554.000
PNC Porosity	Borehole Size	6.125	inch	10554.000	13837.000
PNC Porosity	Casing Size	7.000	inch	10499.754	10554.000
PNC Porosity	Casing Size	4.500	inch	10554.000	13837.000
PNC Porosity	Gas Filled	Non Gas Filled		10499.754	10554.000
PNC Porosity	Gas Filled	Non Gas Filled		10554.000	13837.000
PNC Porosity	Matrix	Sandstone		10499.754	13837.000

DEPTH OFFSETS
(for Acquired Curves)

SERIES	DEPTH OFFSET	ACQUIRED CURVES							
8248EA	-14.478	FLTM							
8248EA	-12.478	CCL	GHV						
2812LA	-9.928	GR							
8281XA	-0.662	HVC300	SEQ3	AMA3	AML3	BKX	CXS		
		CPT300	CPT302	CPT303	CPT304	ET3	IXS		
		MCS3	MCS300	QCAL3	RGN3	RICK	SDA3		
		SDL3	SGA3	SGL3	STA3	XS	ASPEC3		
		AMB3	AMF3	CHF3	IXSC	IXSN	RAT023		
		RICXC	RIN13C	RIN23	RIN23C	SD3D	SG3D		
		SGB3	SGF3	WDTH3	CKSR	IXSR	XSR		
		RICXR							

B281XA

-0.250

BKL	CHF2	CLS	CPT2Q0	CPT2Q2	CPT2Q3
CPT2Q4	ET2	ILS	LS	MCS2	MCS2Q0
QCAL2	RGN2	RICL	RONE23	RTWQ23	SDA2
SDL2	SGA2	SGB2	SGF2	SGK2	SGL2
STA2	ASPEC2	ILSC	ILSN	WDTH2	RICLC
CLSR	ILSR	LSR	RICLR		
CPRS	HVC100	WV	SEQ	SED1	AMA1
AMB1	AWE1	AMF1	AML1	BKS	CHF1
CSS	COORB	CORF	CPT100	CPT102	CPT102A
CPT102B	CPT102C	CPT103	CPT104	CPT105	ET1
G1	G2	GE1S	GE2S	ISS	MCS1
MCS100	QA1	QCAL1	QM1	RATO	RAT013
RBOR	RGN1	RICS	RIN	RONE	RPOR
RTWO	RIN13	RONE13	RTW013	SALB	SC1
SDA1	SDL1	SGA1	SGB1	SGBC	SGE1
SGF1	SGFC	SGK1	SGL1	SS	SS2
STA1	PD1S	PD2S	PD3S	MD1S	MD2S
MD3S	DG1S	DG2S	DG3S	PD1M	PD2M
PD3M	MD1M	MD2M	MD3M	DG1M	DG2M
DG3M	MVS	WA	WVM	FILV	IAM
TA	PVM	PVS	IAS	SSTAT	QPD1
QPD2	QPD3	QMD1	QMD2	QMD3	QDG1
QDG2	QDG3	QMA	QTA	QFILV	QMV
QPV	QIA	DERR	DCNT	QPK1	QSA1
PKS1	ASPEC1	HOC	FE2XC	ISSC	RINC
ISSN	RDEN	WDTH1	RICSC	CSSR	G1R
G2R	ISSR	SSR	SS2R	RATOR	RAT013R
RBORR	RICSR	RINR	RIN13R	RONER	RPORR
RTWOR					
SYSTEM		TEN	TTEN		

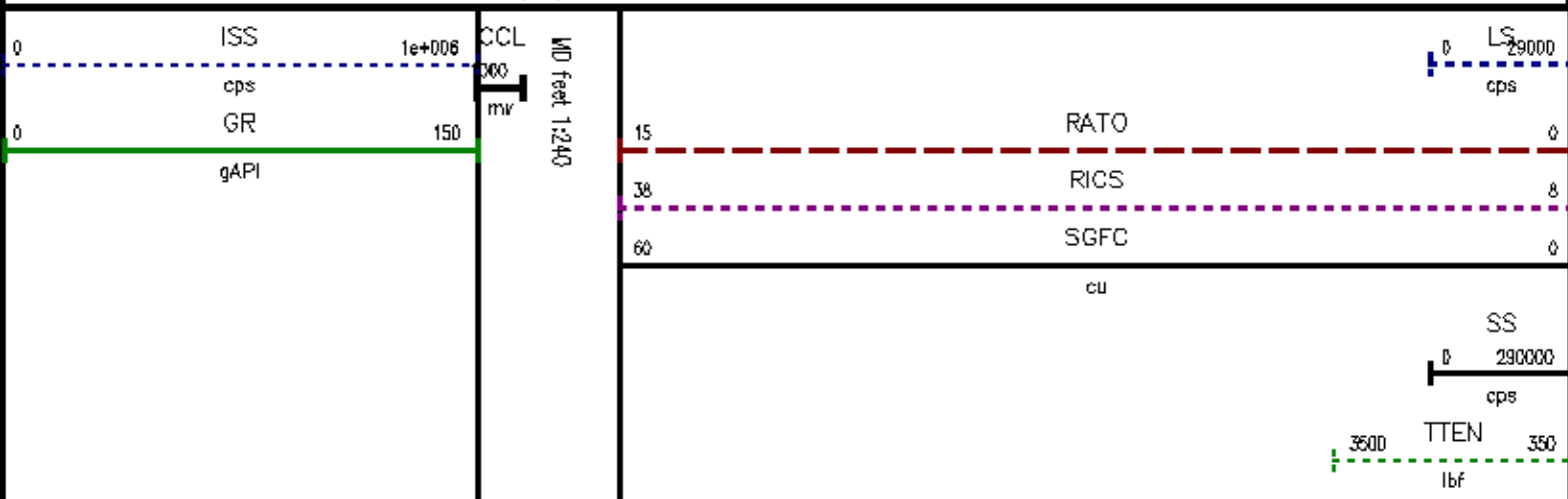
B281XA

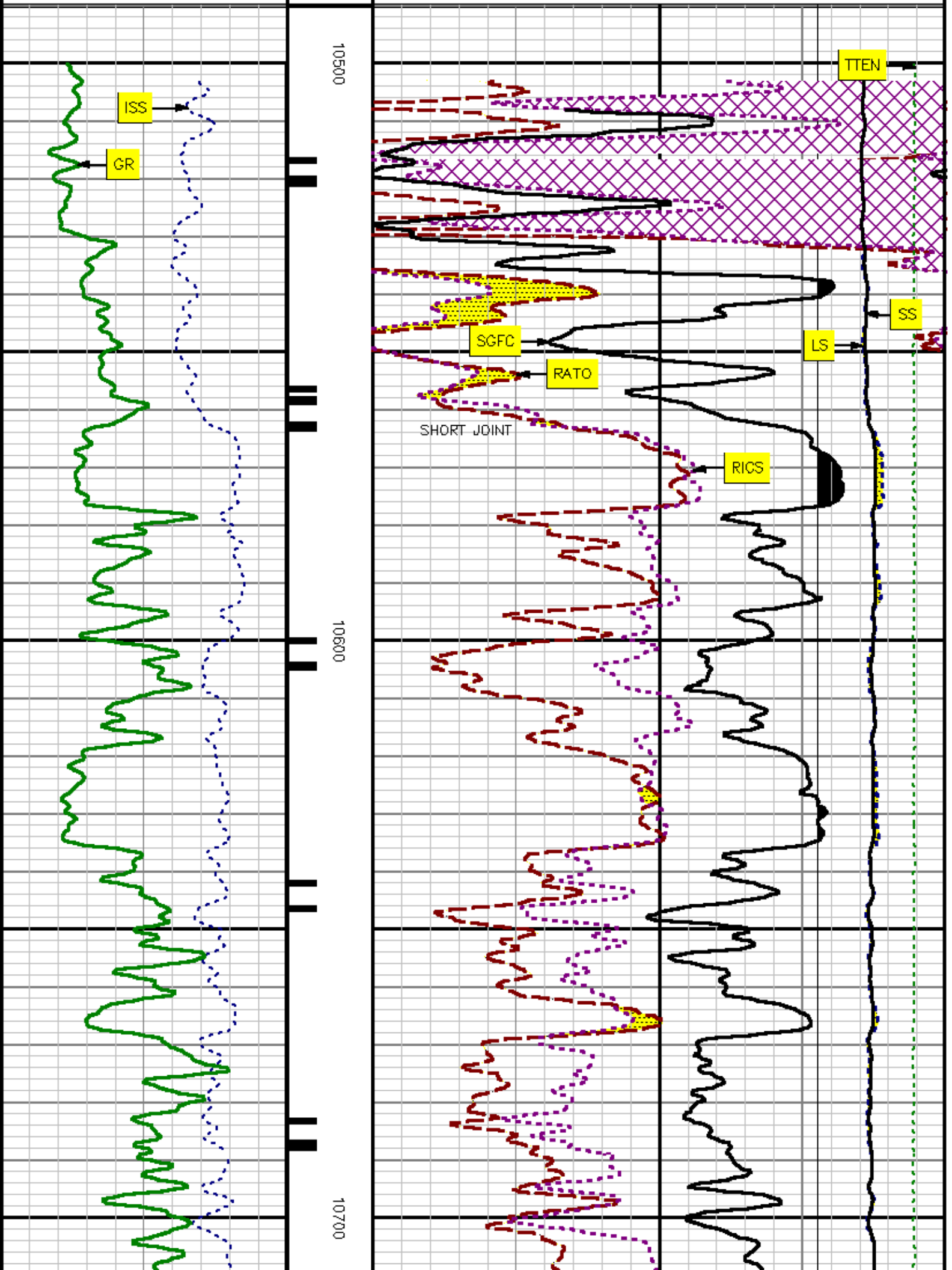
0.000

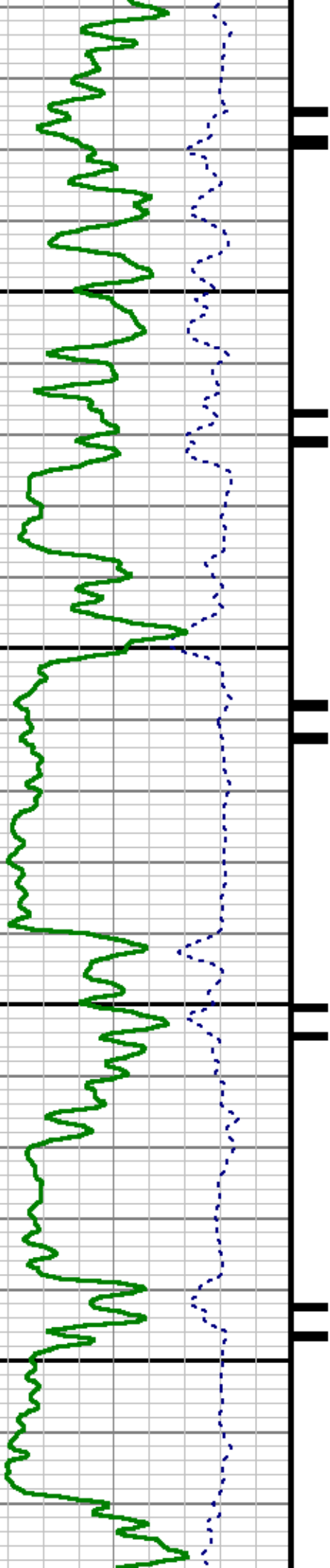
SYSTEM

0.000

Created by : MIXED
 Plotted by : PlotMgr, v5.4.5D4
 Company : EXXONMOBIL PRODUCTION COMPANY
 Well : PCU 286-5A6
 File Name : D:\WELLDATA\A6RPM\MAIN.XTF
 Mode : PlotMgr 5.4.5D4
 Interval : 10480.00 - 13837.00 feet UP
 Created : 7/19/2011 3:11:24 PM

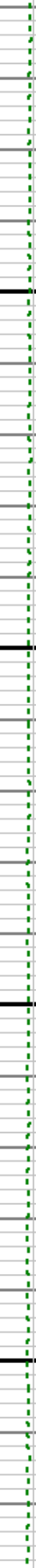
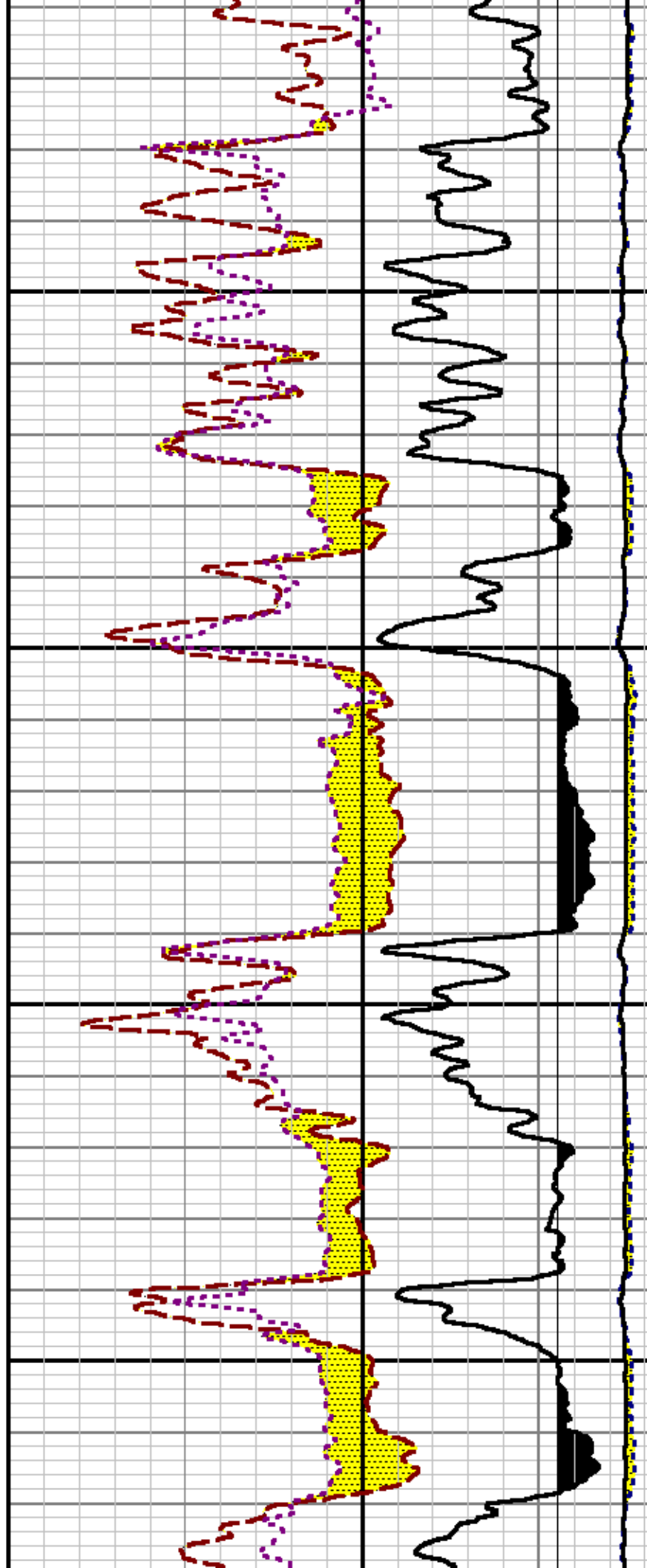


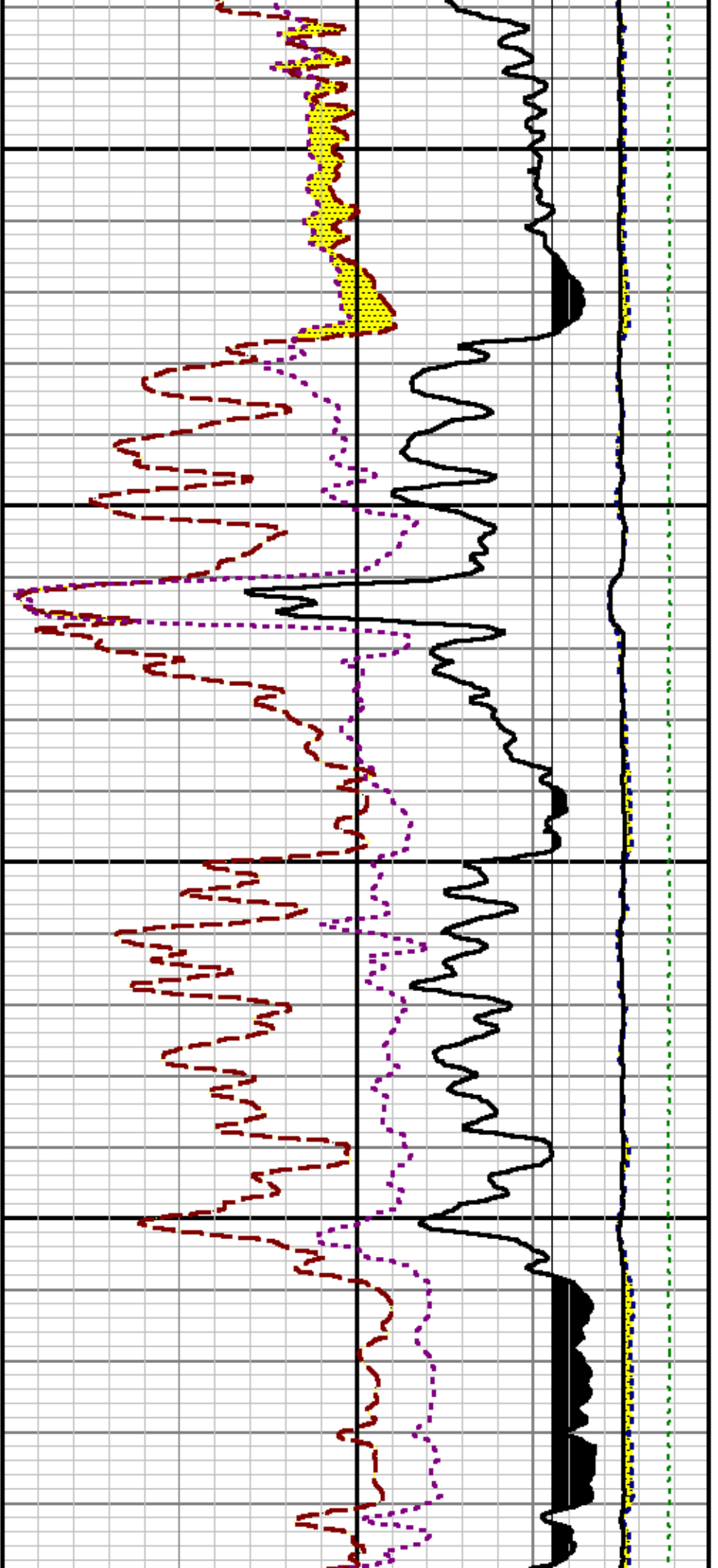




10800

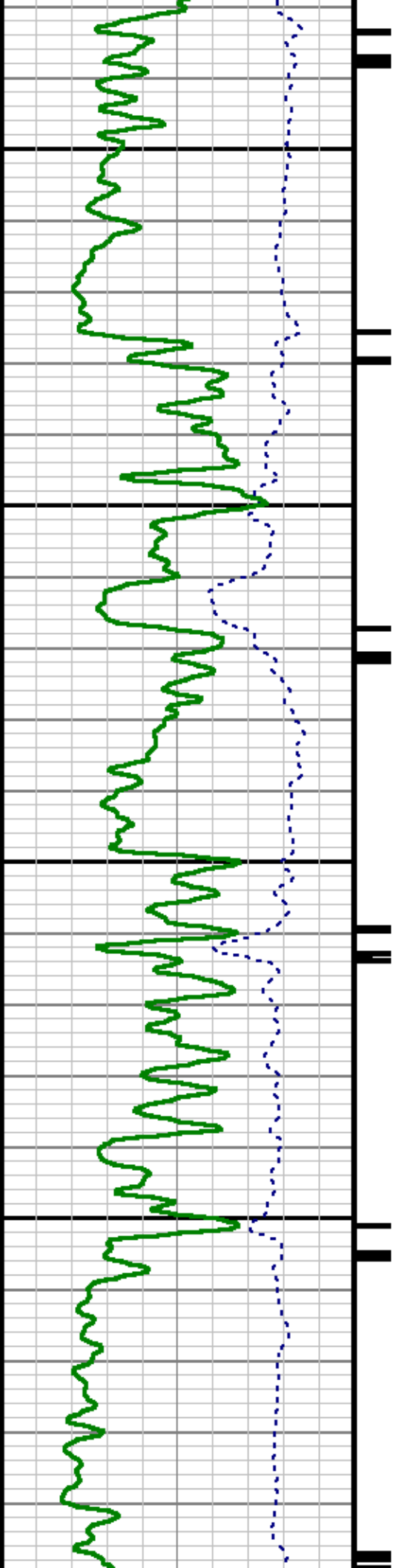
10900

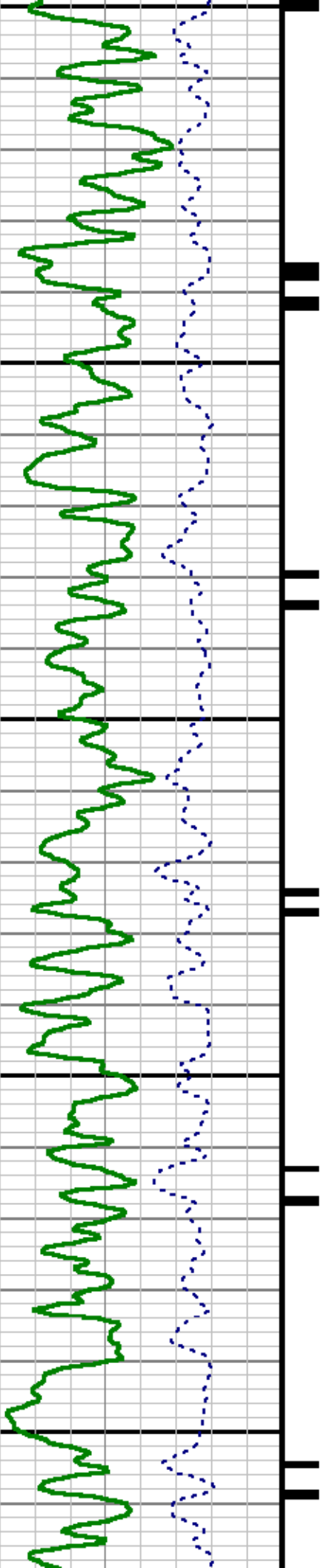




11000

11100

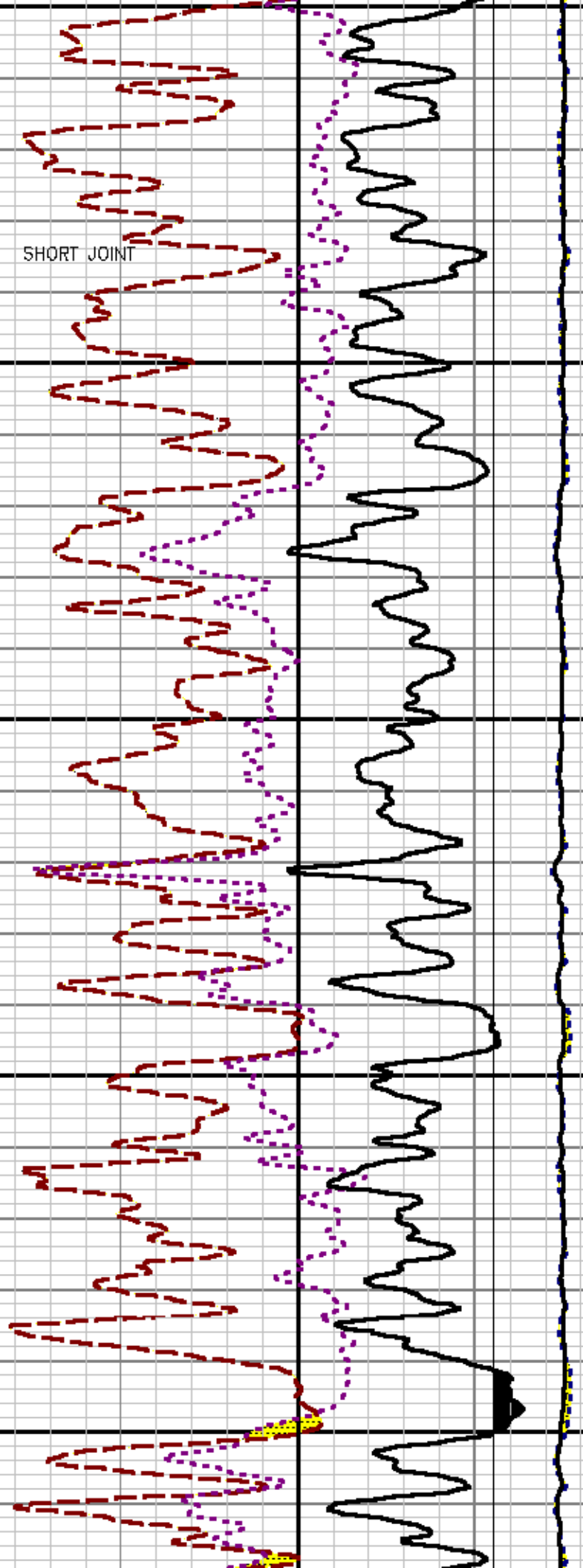


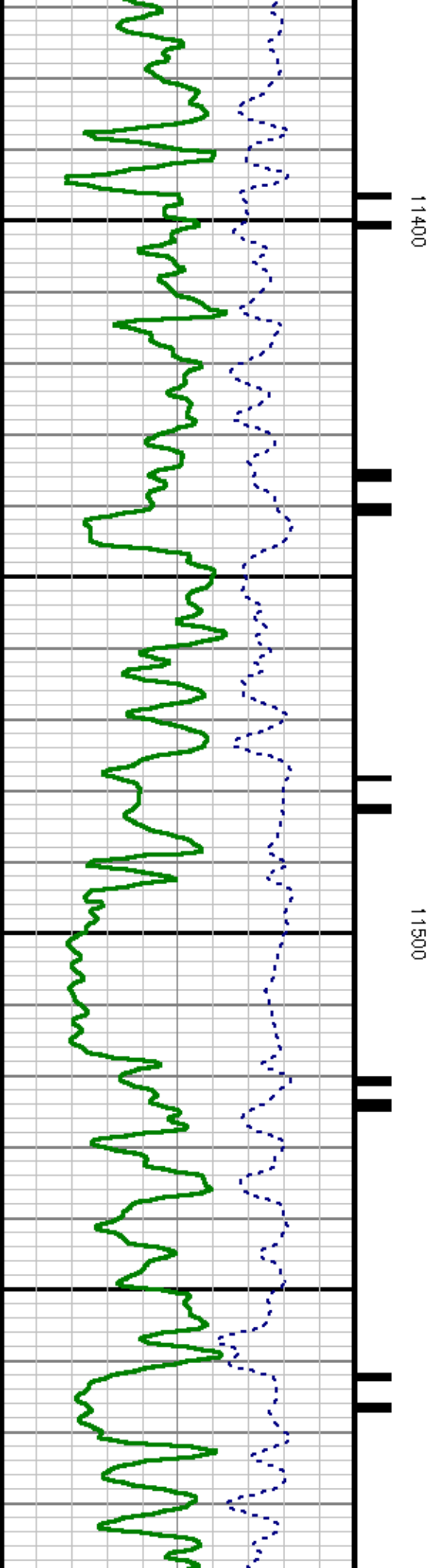
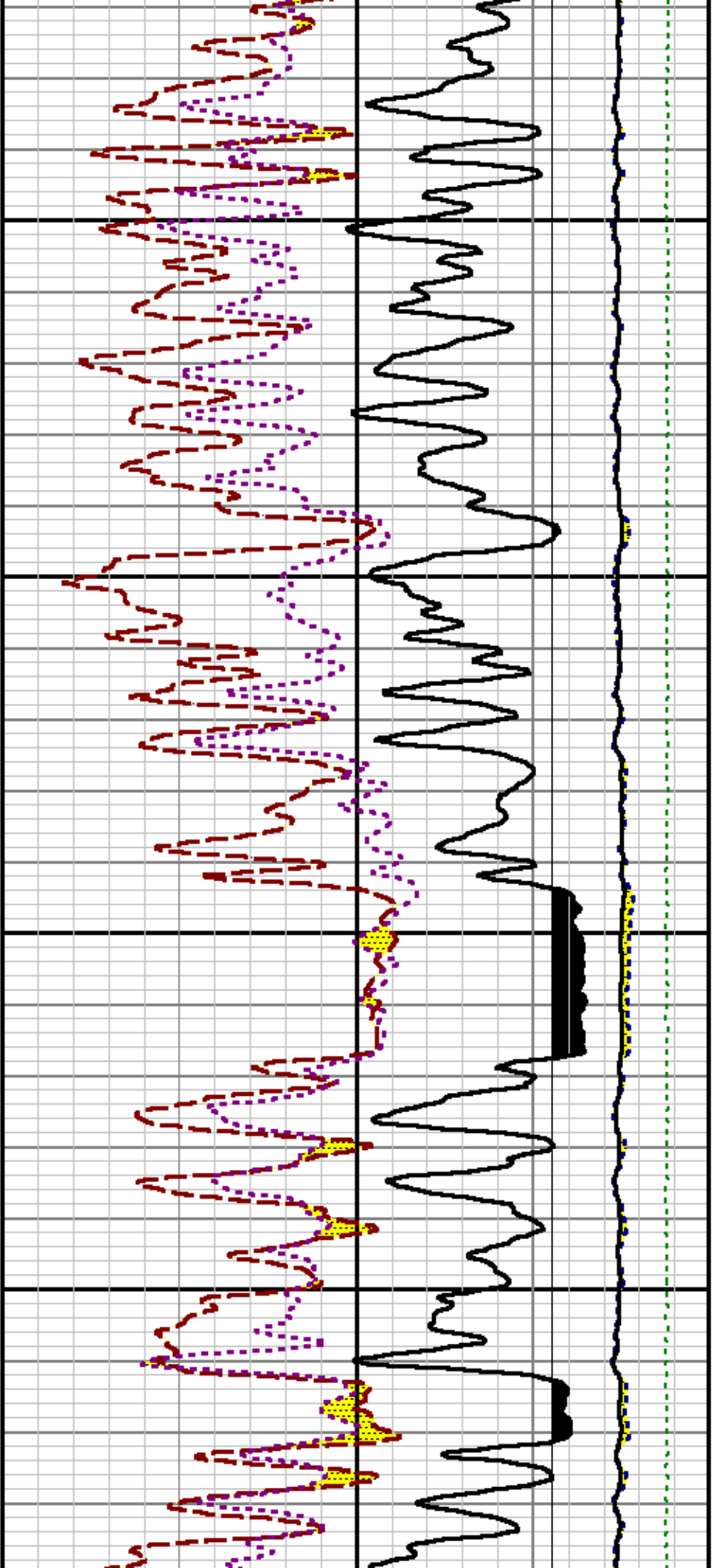


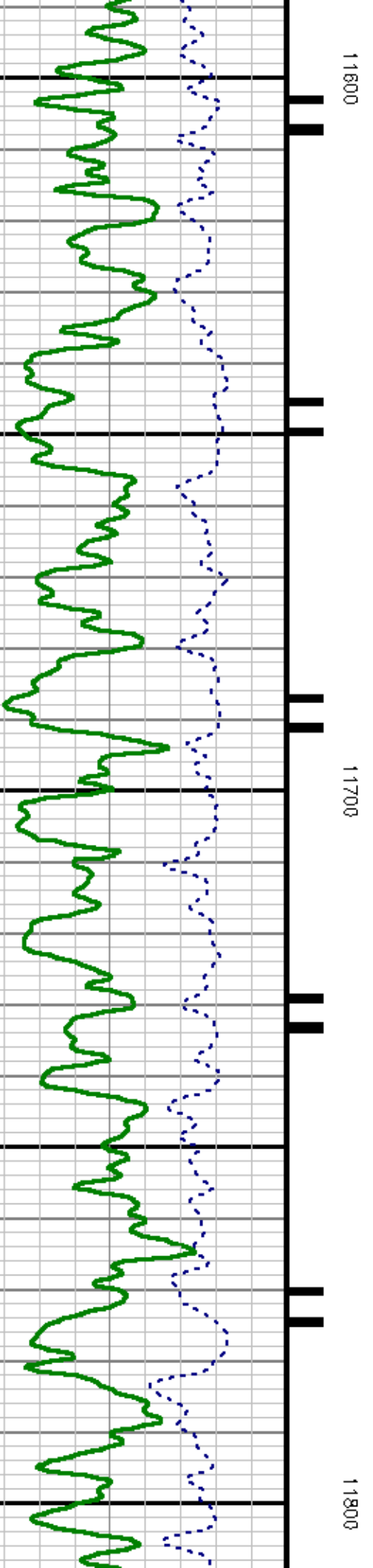
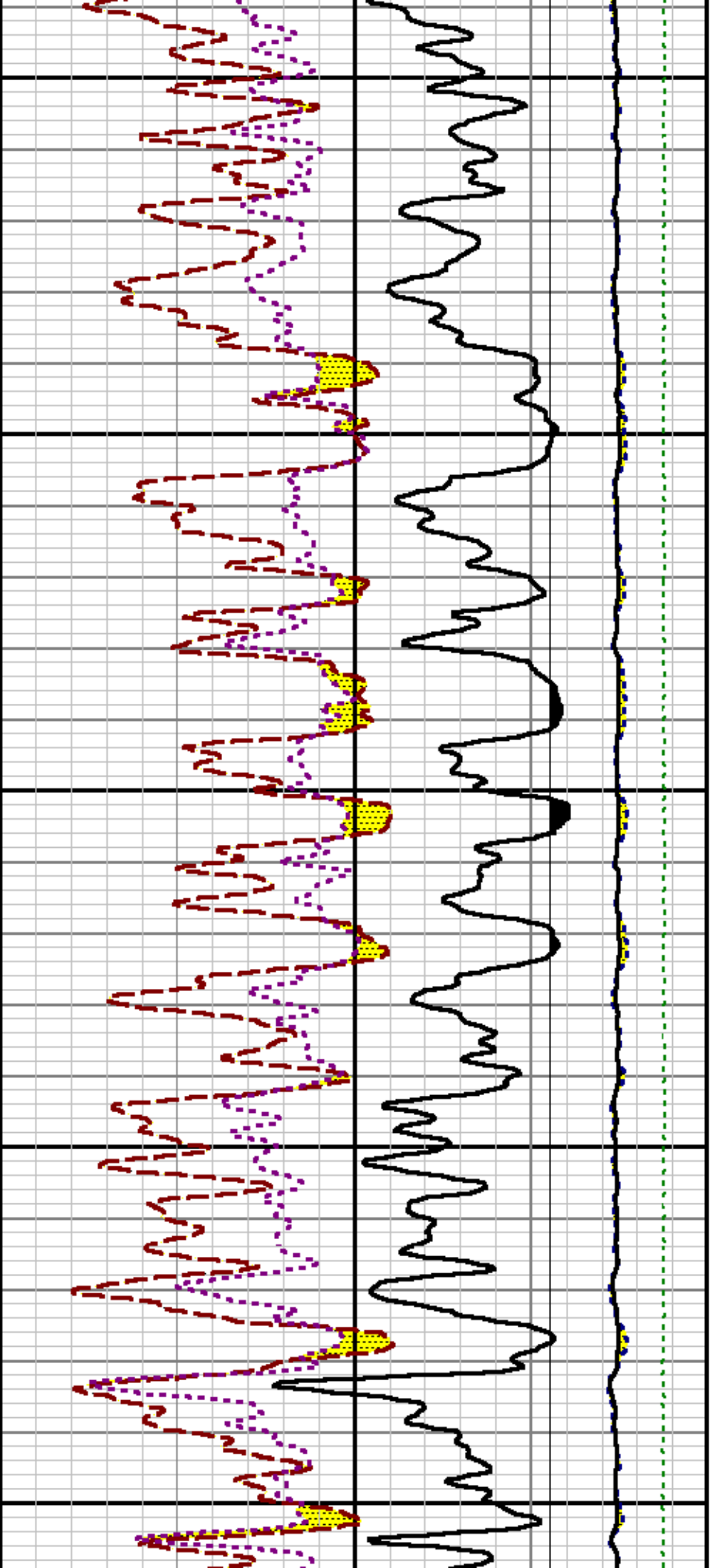
11200

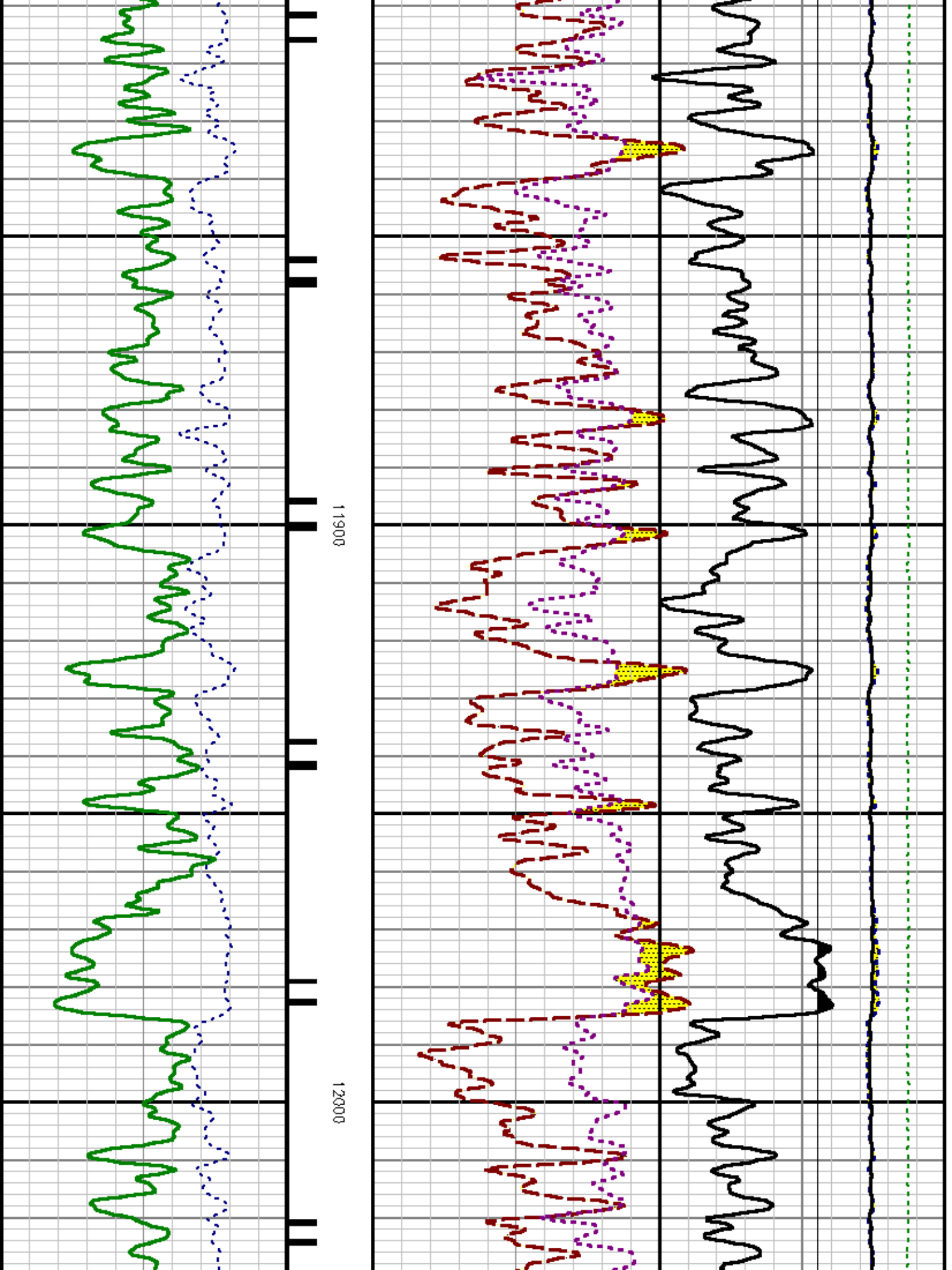
11300

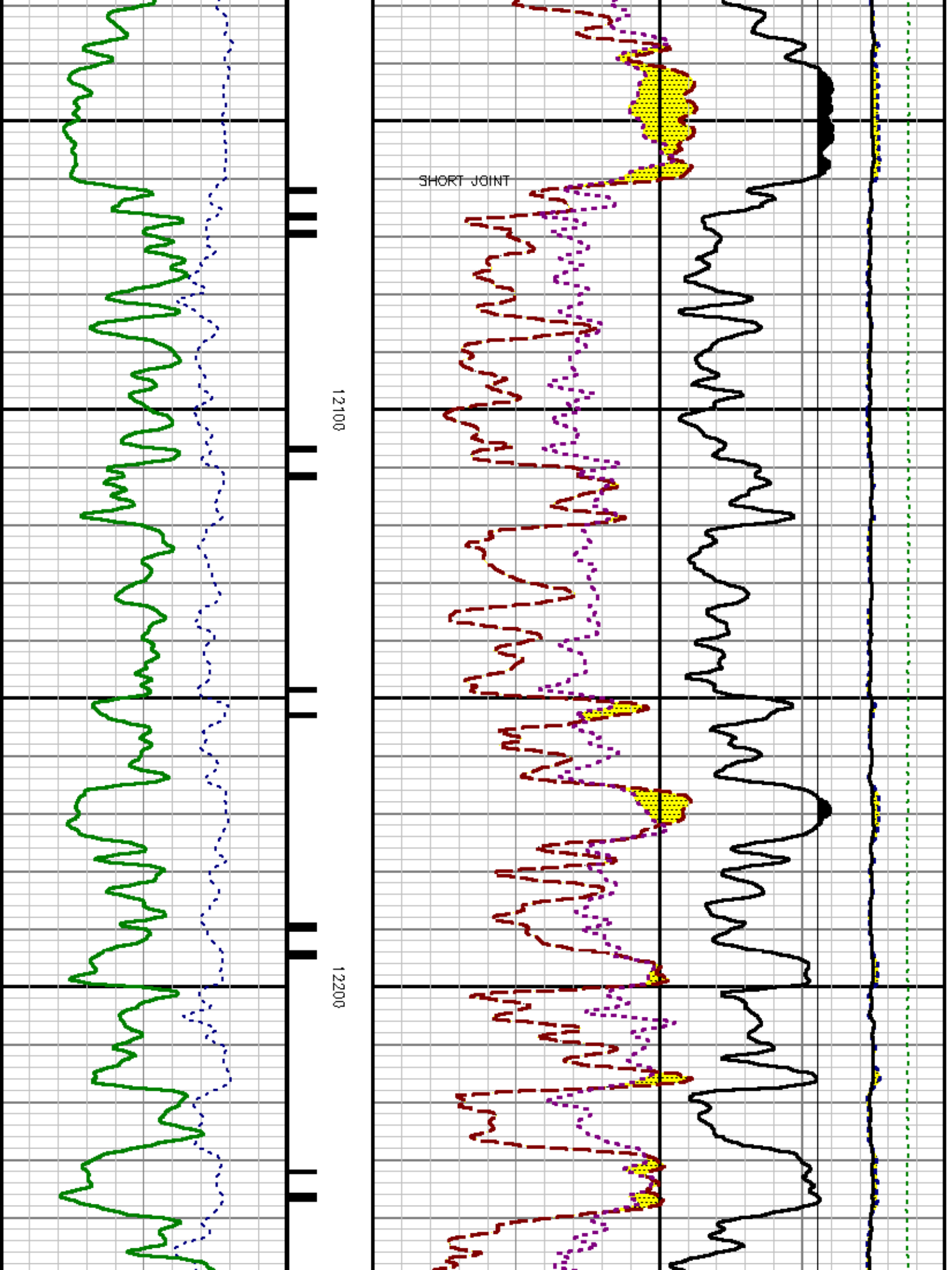
SHORT JOINT

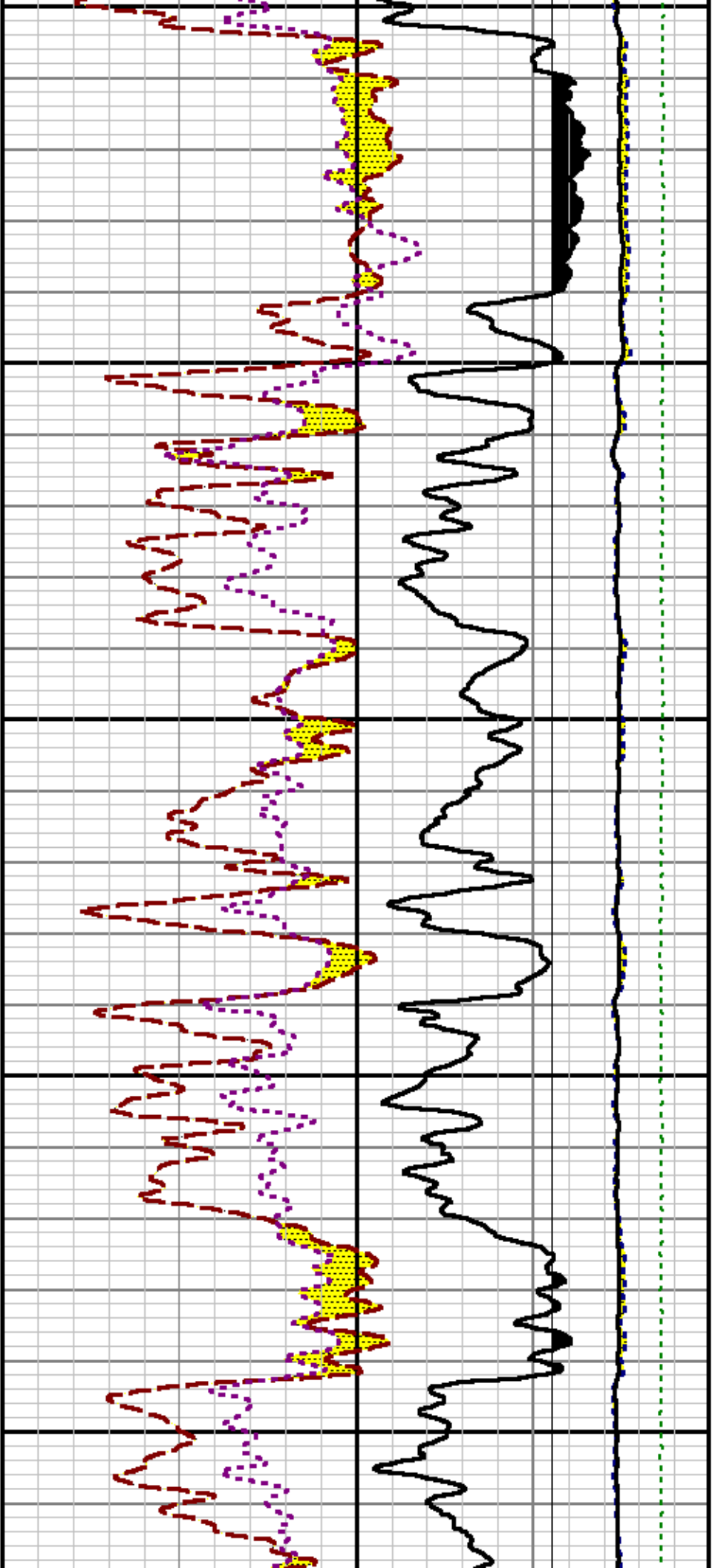






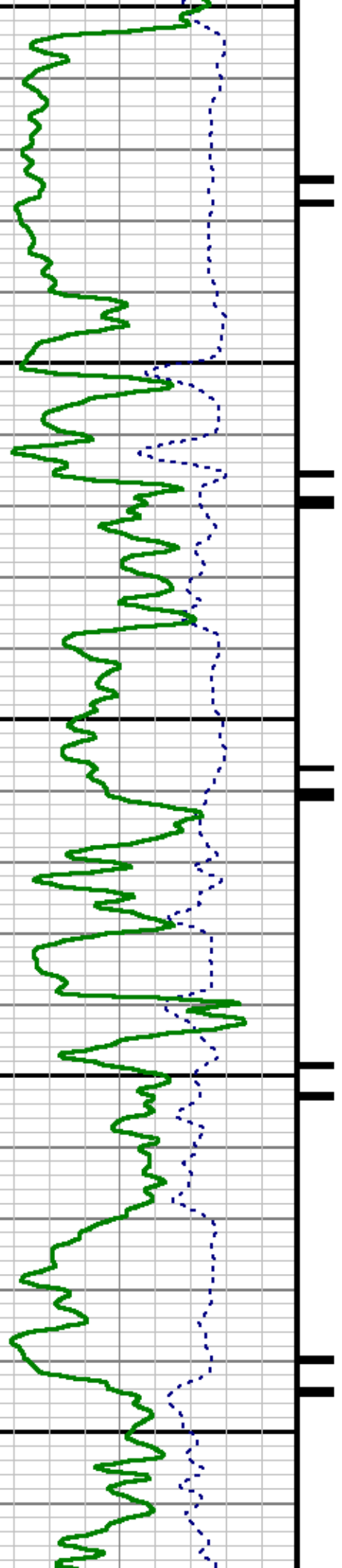


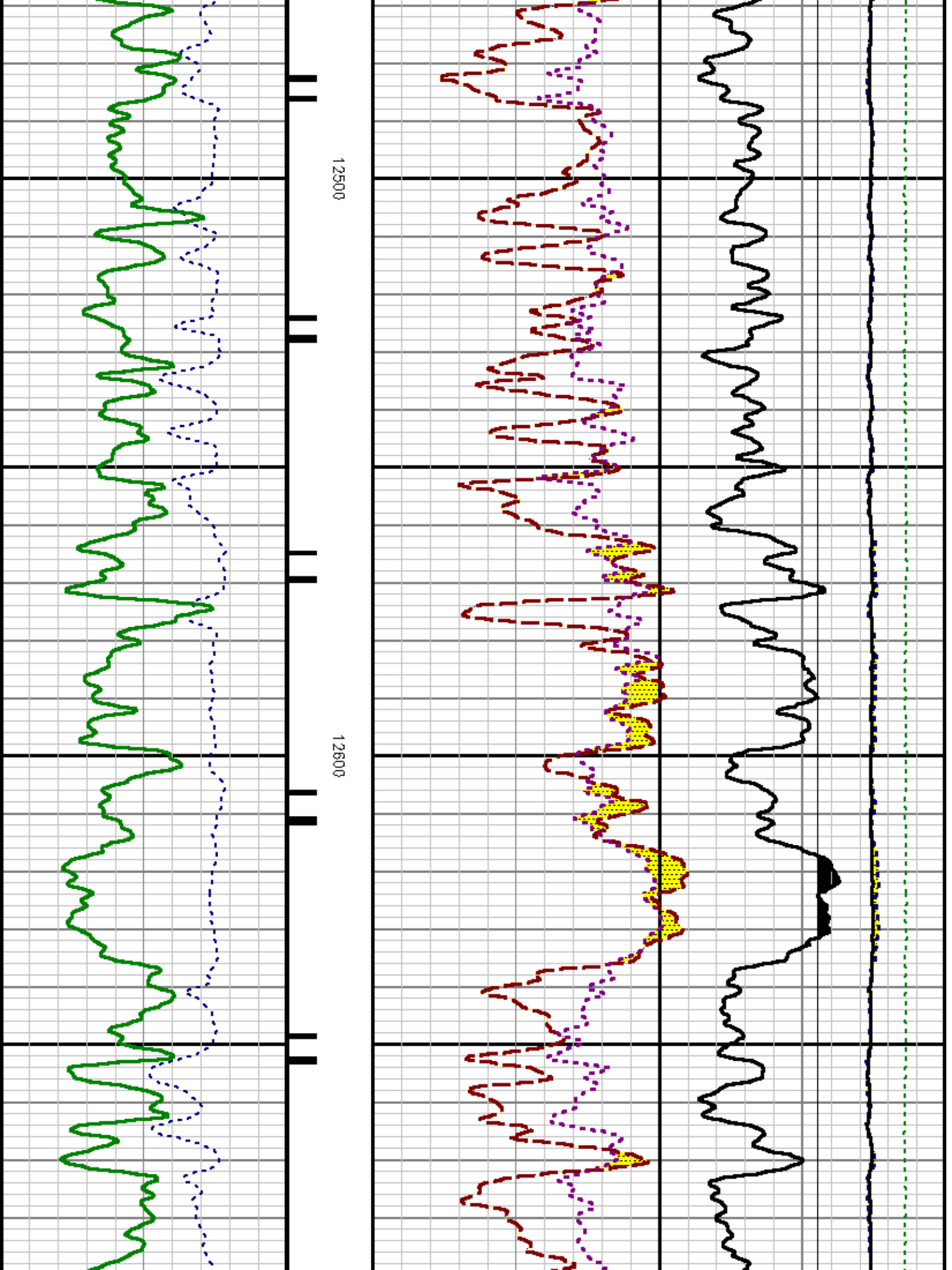


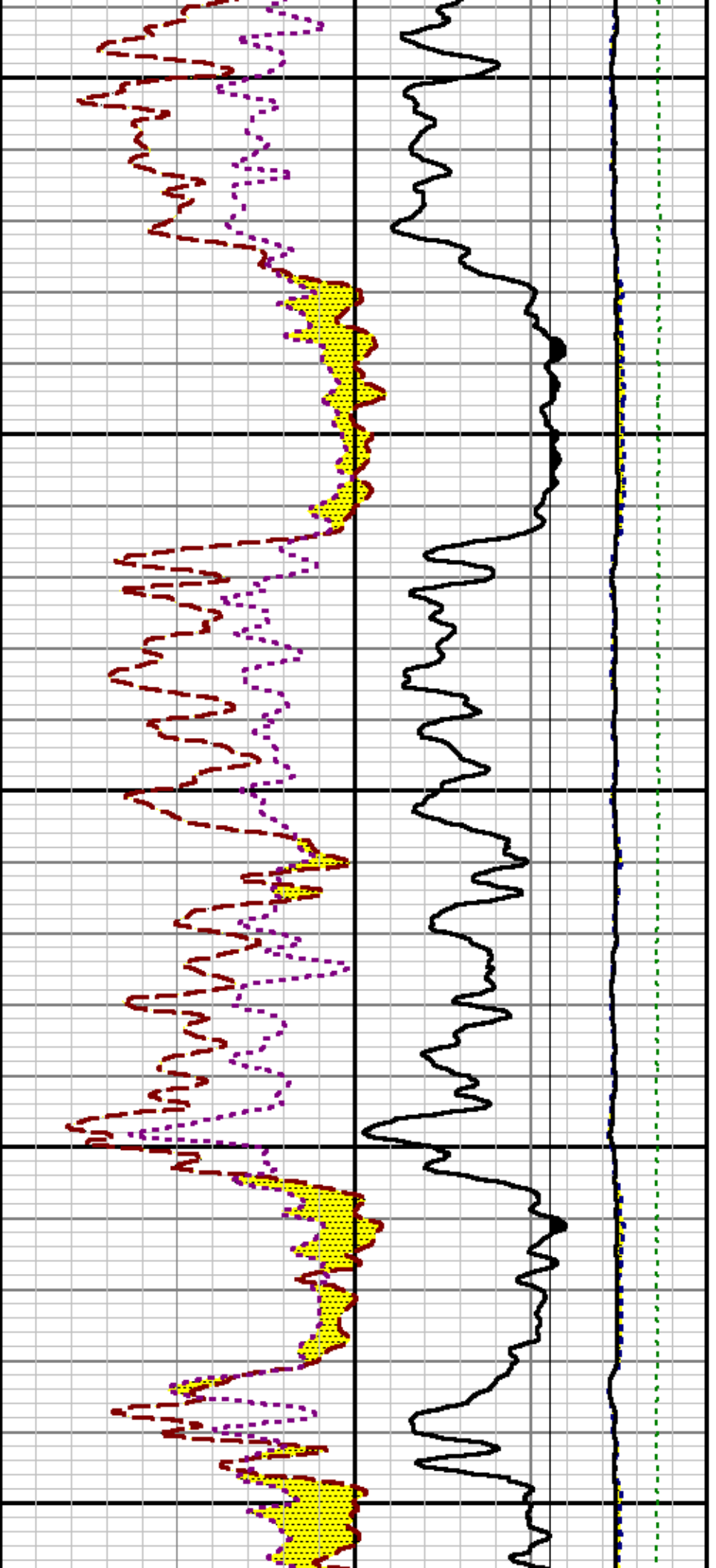


12300

12400



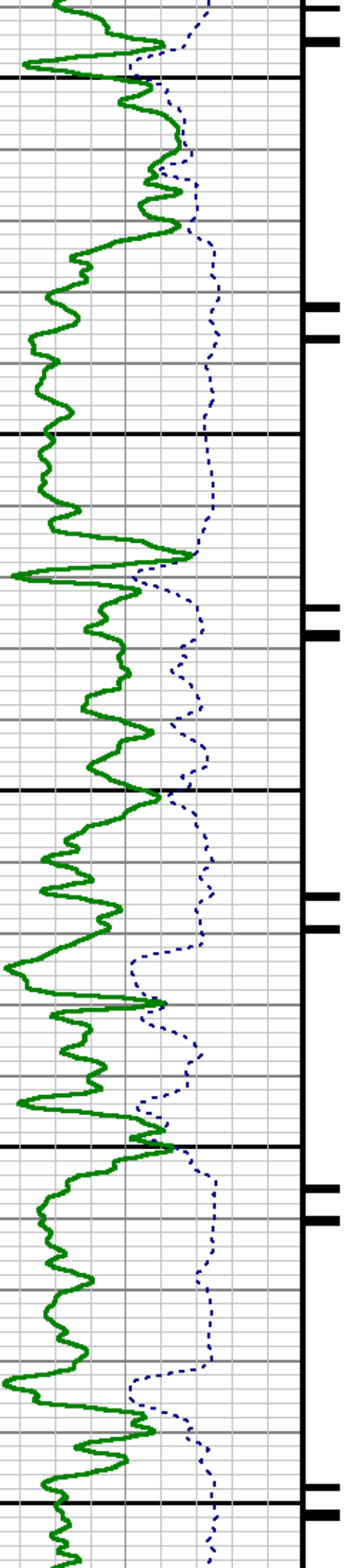


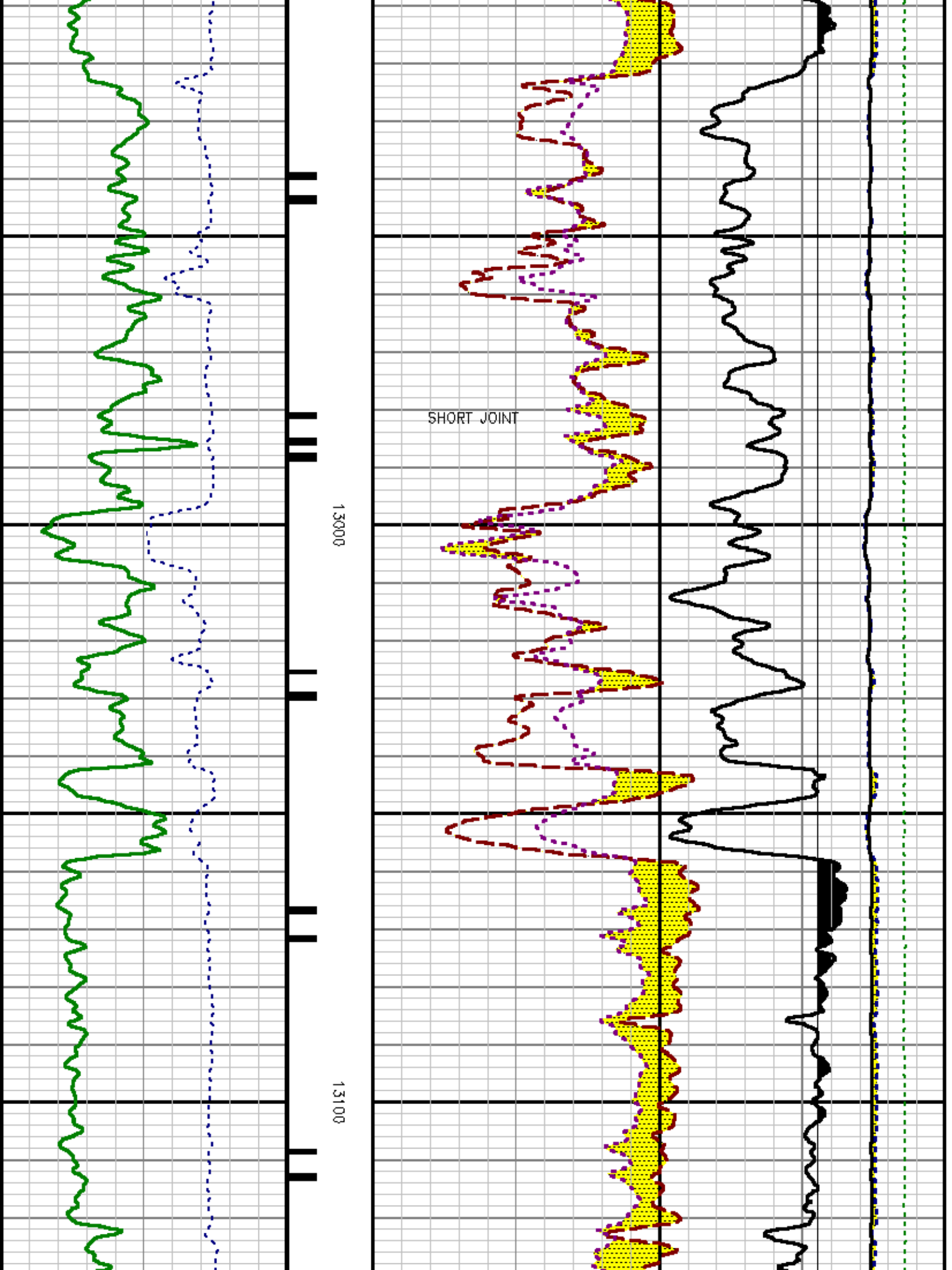


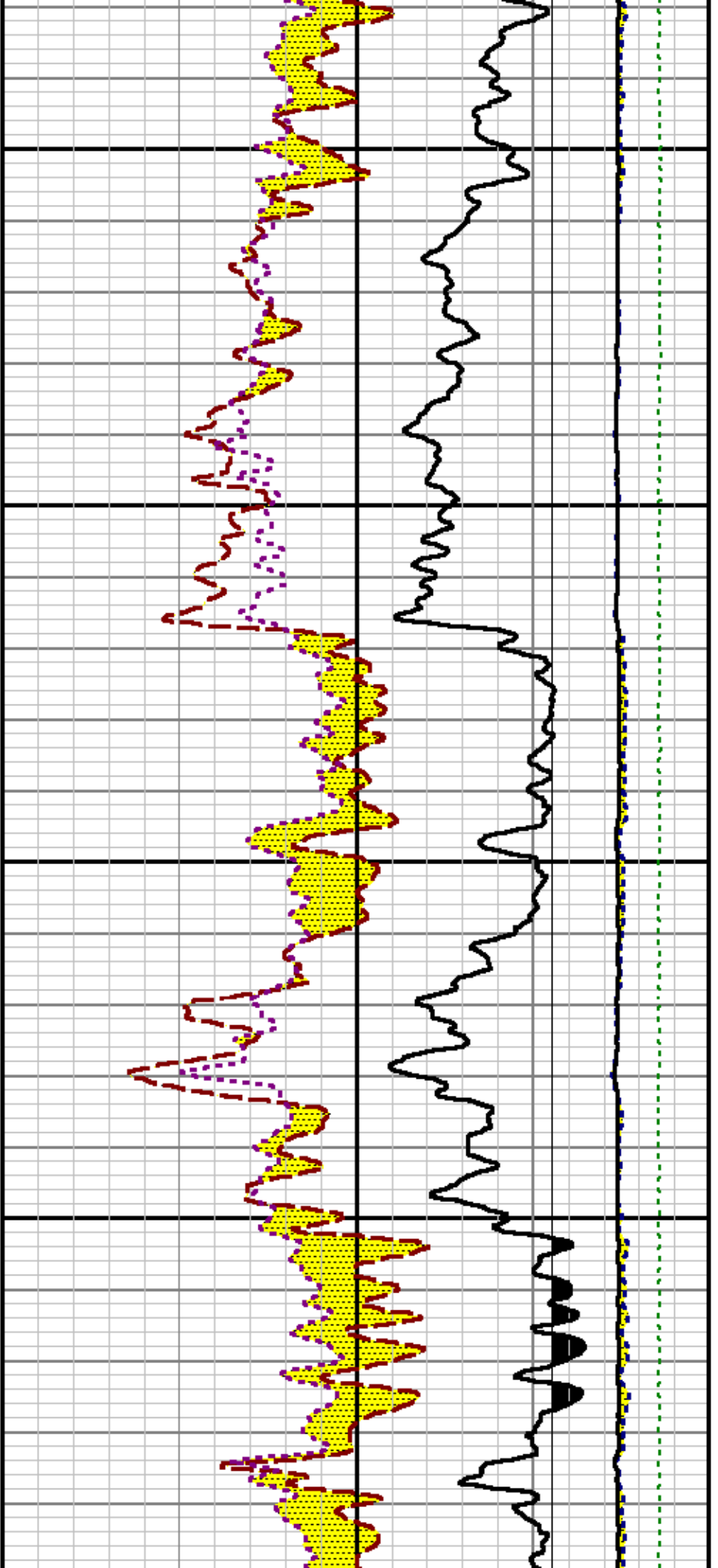
12700

12800

12900

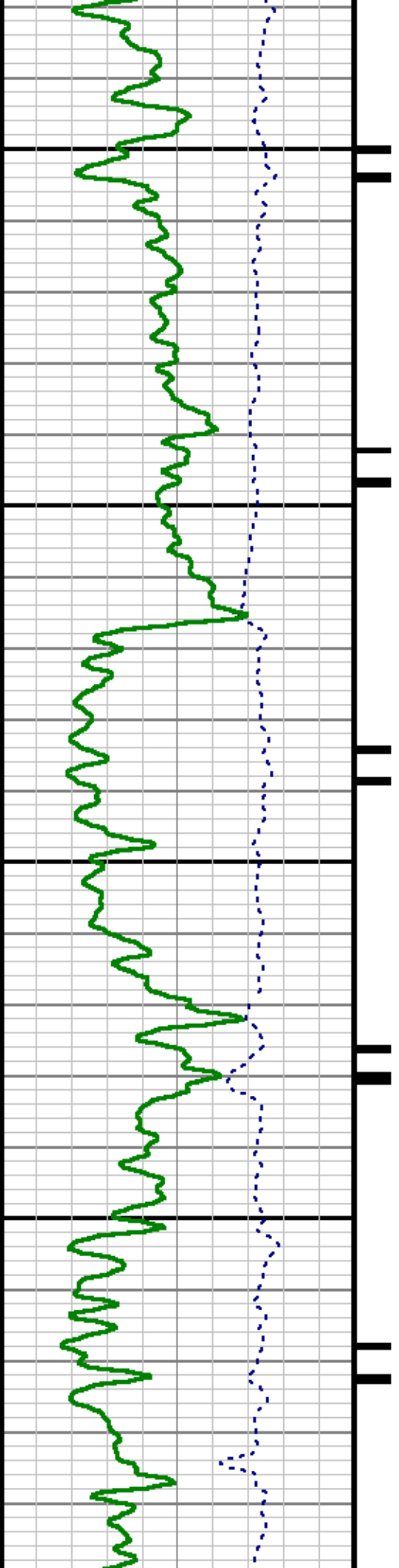


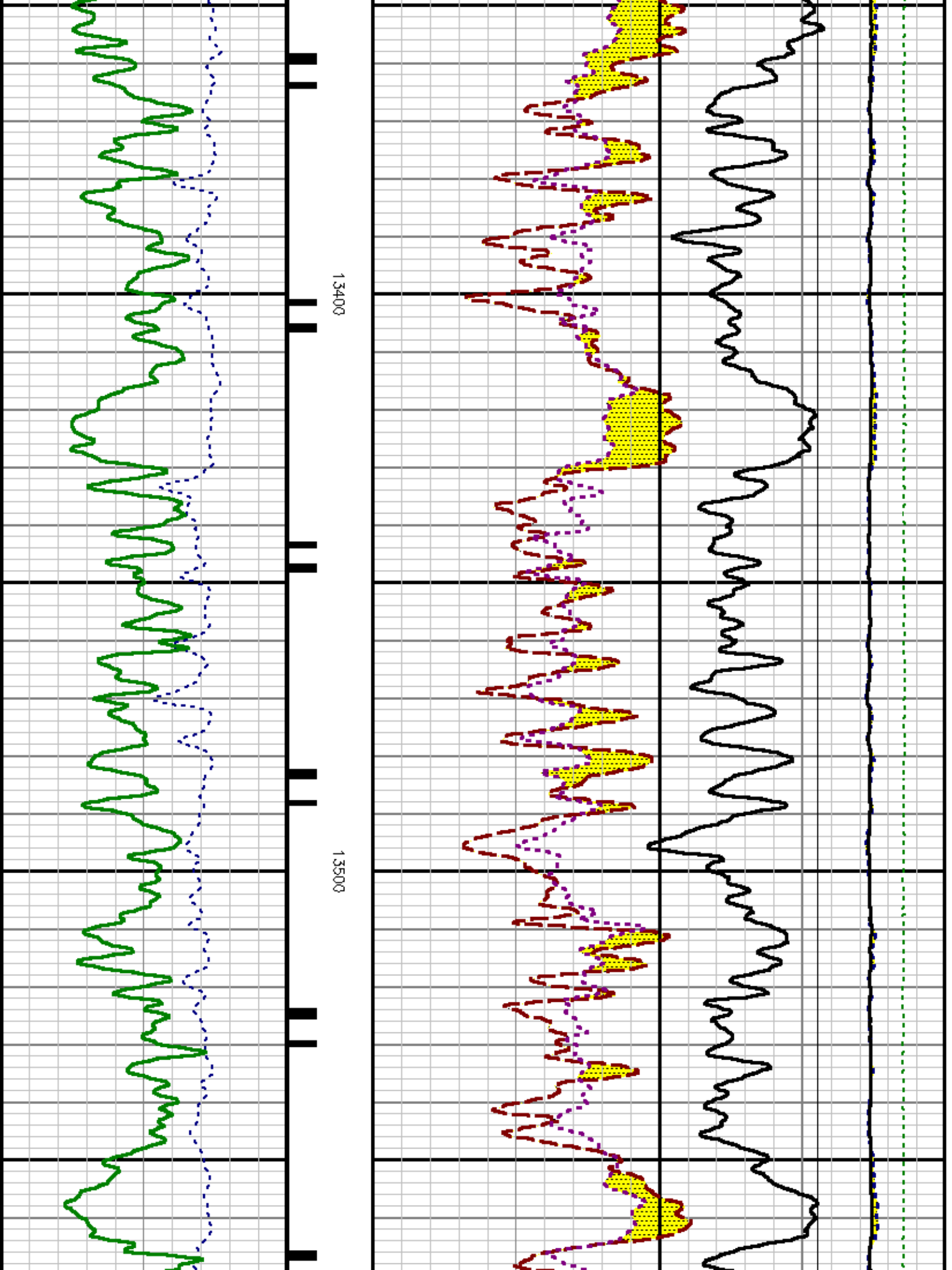


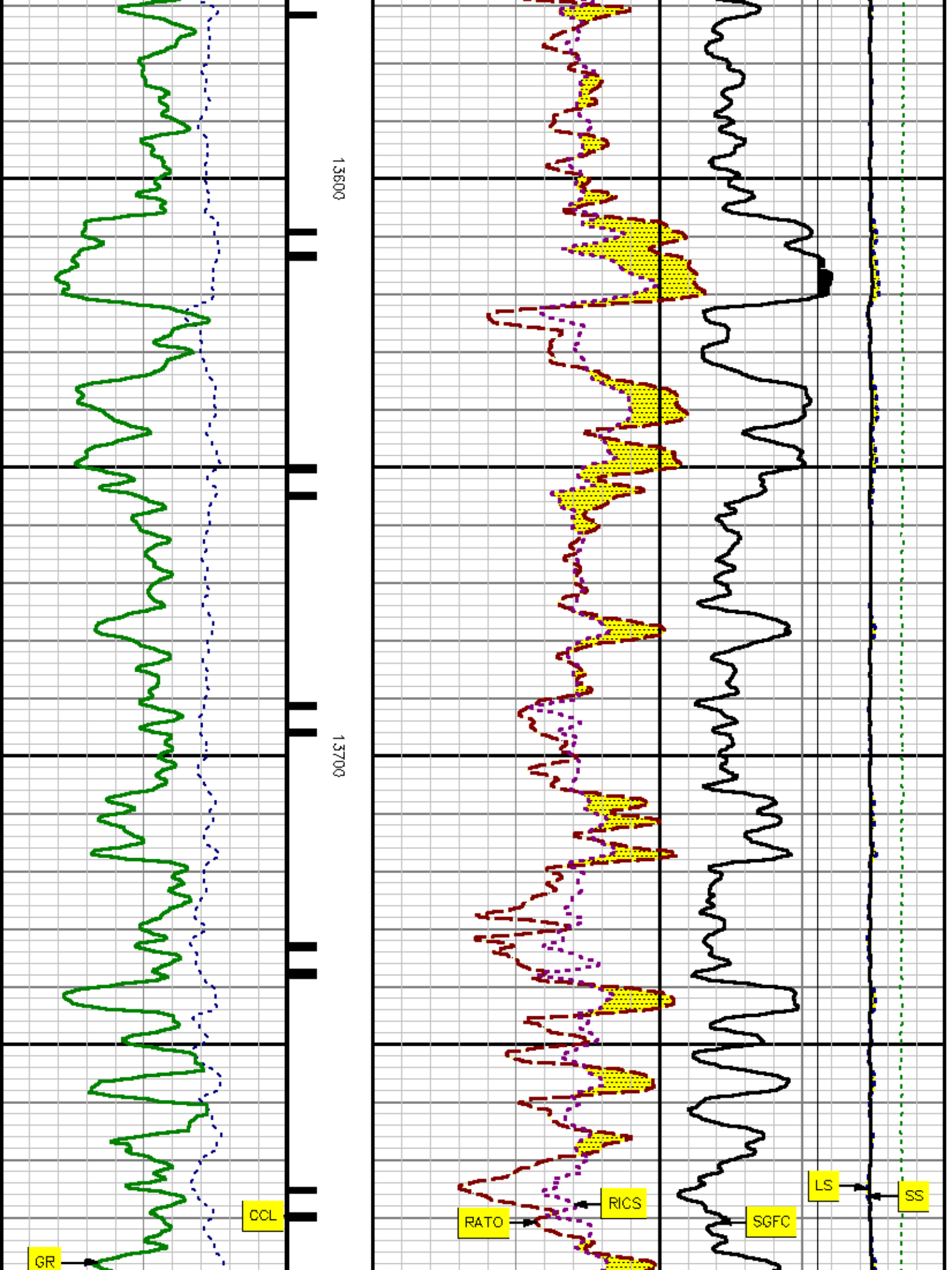


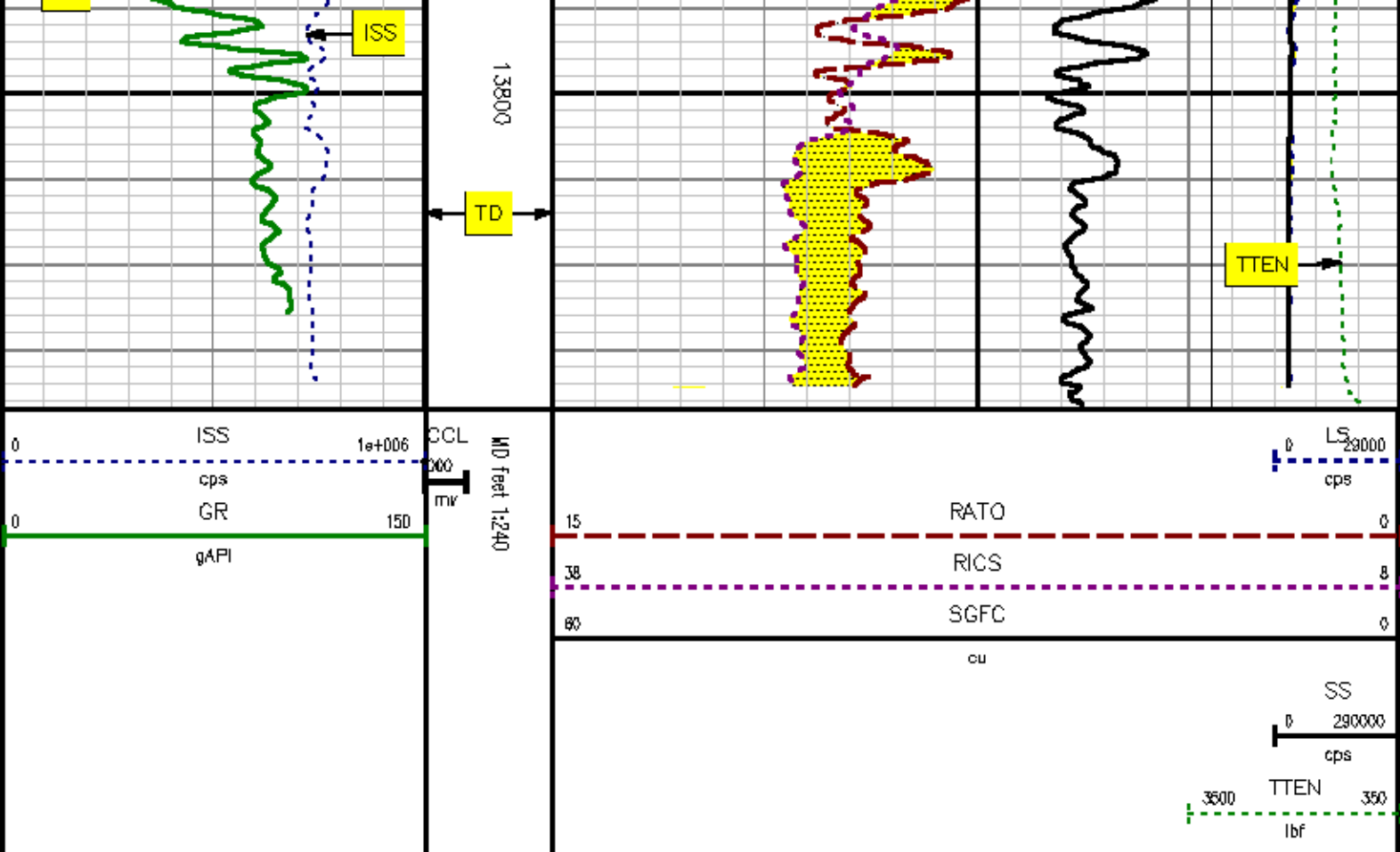
13200

13300









REPEAT SECTION

SPL PROCESSING

MEASUREMENT TYPE	PARAMETER	VALUE	UNITS	TOP	BOTTOM
PNC Porosity	Borehole	Cased		10999.999	11500.530
PNC Porosity	Borehole Size	6.125	inch	10999.999	11500.530
PNC Porosity	Casing Size	4.500	inch	10999.999	11500.530
PNC Porosity	Gas Filled	Non Gas Filled		10999.999	11500.530
PNC Porosity	Matrix	Sandstone		10999.999	11500.530

DEPTH OFFSETS
(for Acquired Curves)

SERIES	DEPTH OFFSET	ACQUIRED CURVES					
8248EA	-14.478	FLTM					
8248EA	-12.478	OCL CHV					
2812LA	-9.928	GR					
8281XA	-0.662	HVC300	SEQ3	AMA3	AML3	BKX	CXS
		CPT300	CPT302	CPT303	CPT304	ET3	IXS
		MCS3	MCS300	QCAL3	RGN3	RICX	SDA3
		SDL3	SGA3	SGL3	STA3	X5	ASPEC3
		AMB3	AMF3	CHF3	IXSC	IXSN	RAT023
		RICXC	RIN13C	RIN23	RIN23C	SD3D	SG3D
		SGB3	SGF3	WDTH3	CXSR	IXSR	XSR
		RICXR					
8281XA	-0.250	HVC200	SEQ2	AMA2	AMB2	AMF2	AML2
		BKL	CHF2	CLS	CPT200	CPT202	CPT203
		CPT204	ET2	ILS	LS	MCS2	MCS200
		QCAL2	RGN2	RICL	RONE23	RTW023	SDA2
		SDL2	SGA2	SGB2	SGF2	SGK2	SGL2
		STA2	ASPEC2	ILSC	ILSN	WDTH2	RICLC
		CLSR	ILSR	LSR	RICLR		
8281XA	0.000	GPRS	HVC100	MV	SEQ	SEQ1	AMA1
		AMB1	AME1	AMF1	AML1	BKS	CHF1
		CSS	CORB	CORF	CPT100	CPT102	CPT102A
		CPT102B	CPT102C	CPT103	CPT104	CPT105	ET1
		G1	G2	GE1S	GE2S	ISS	MCS1
		MCS100	QA1	QCAL1	QM1	RATO	RAT013
		RBOR	RGN1	RICS	RIN	RONE	RPOR
		RTW0	RIN13	RONE13	RTW013	SALB	SC1
		SDA1	SDL1	SGA1	SGB1	SGBC	SGE1
		SGF1	SGFC	SGK1	SGL1	SS	SS2
		STA1	PD1S	PD2S	PD3S	MD1S	MD2S
		MD3S	DG1S	DG2S	DG3S	PD1M	PD2M
		PD3M	MD1M	MD2M	MD3M	DG1M	DG2M
		DG3M	MVS	MA	MVM	FILV	IAM
		TA	PVM	PVS	IAS	SSTAT	QPD1
		QPD2	QPD3	QMD1	QMD2	QMD3	QDG1
		QDG2	QDG3	QMA	QTA	QFILV	QMV
		QPV	QIA	DERR	DCNT	QPK1	QSA1
		PKS1	ASPEC1	H0C	FE2XC	ISSC	RINC
		ISSN	R0EN	WDTH1	RICSC	CSSR	G1R
		G2R	ISSR	SSR	SS2R	RATOR	RAT013R
		RBORR	RICSR	RINR	RIN13R	RONER	RPORR
		RTWOR					
SYSTEM	0.000	TEN	TTEN				

Created by : RPMB, v5.0.0.0

Plotted by : PlotMgr, v5.4.5D4

Company : EXXONMOBIL PRODUCTION COMPANY

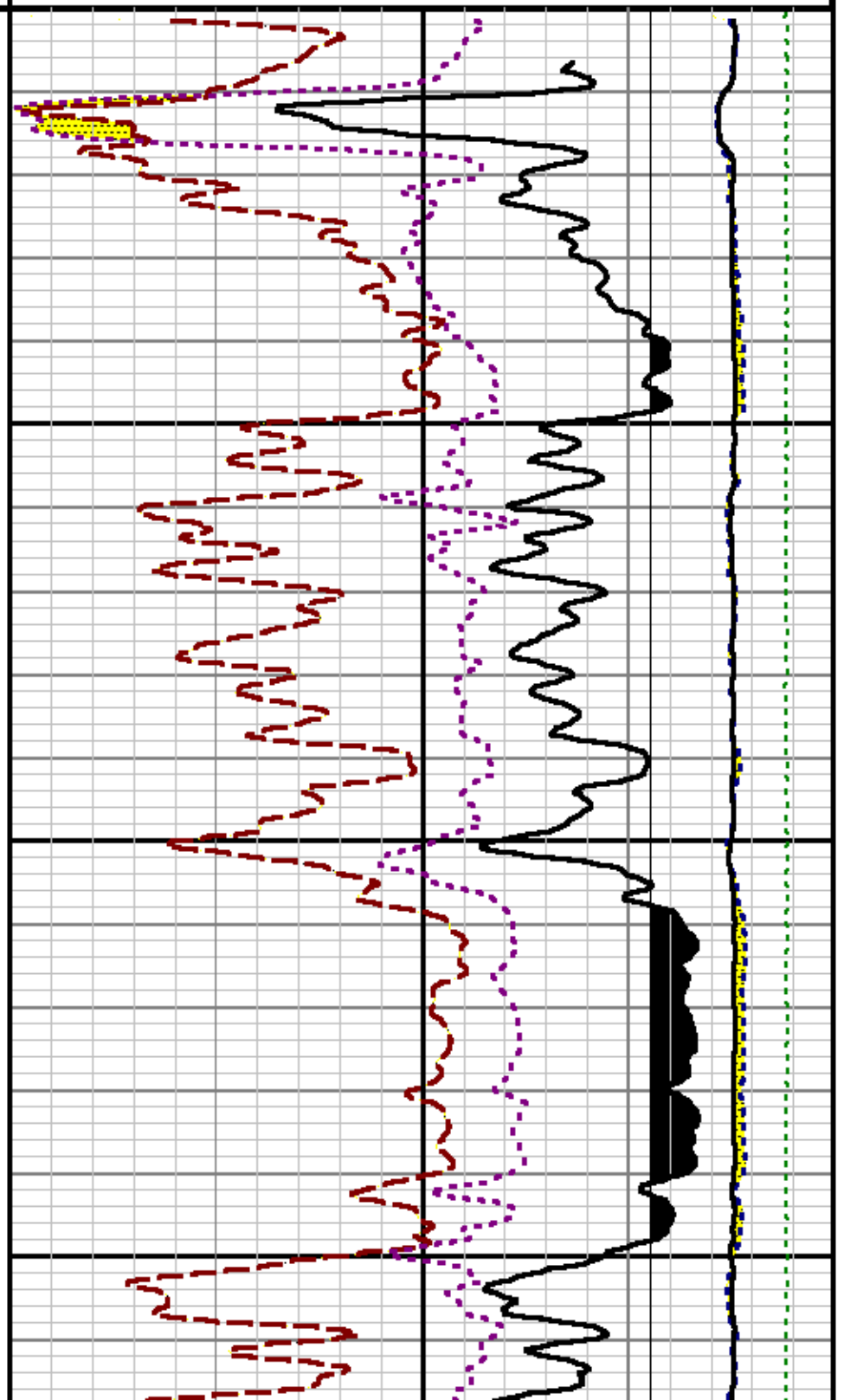
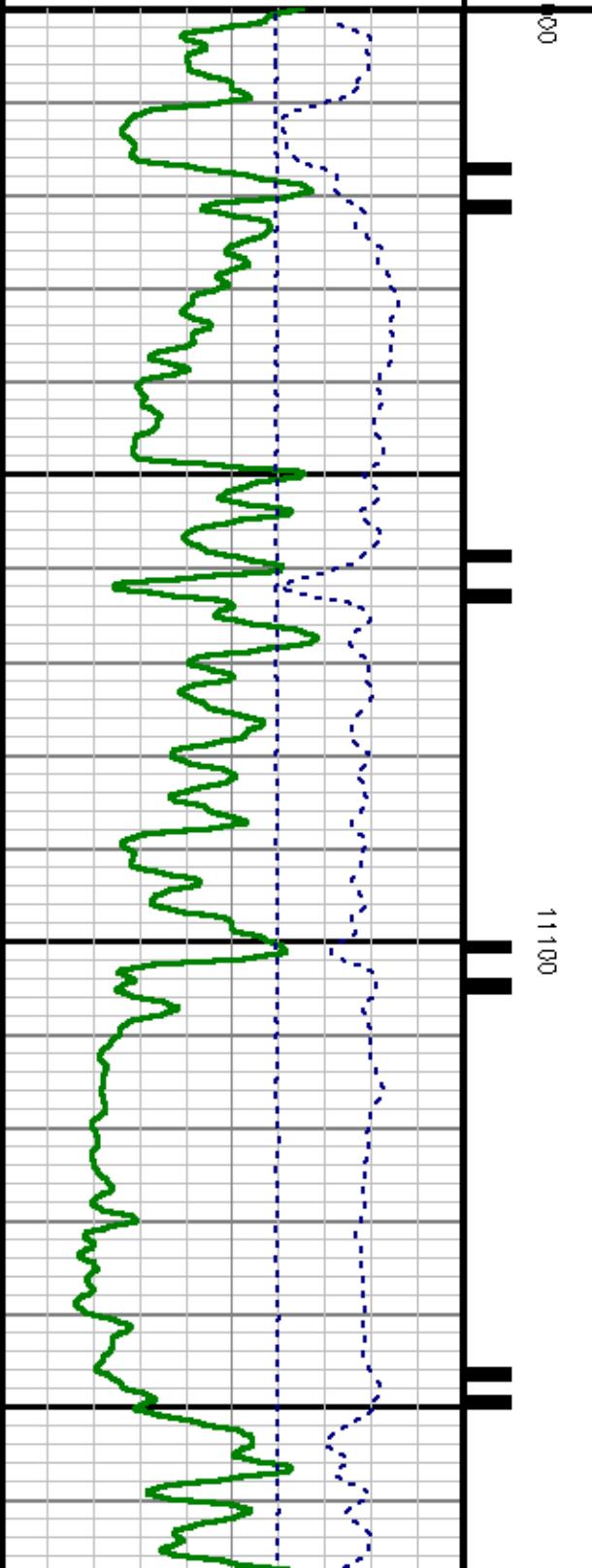
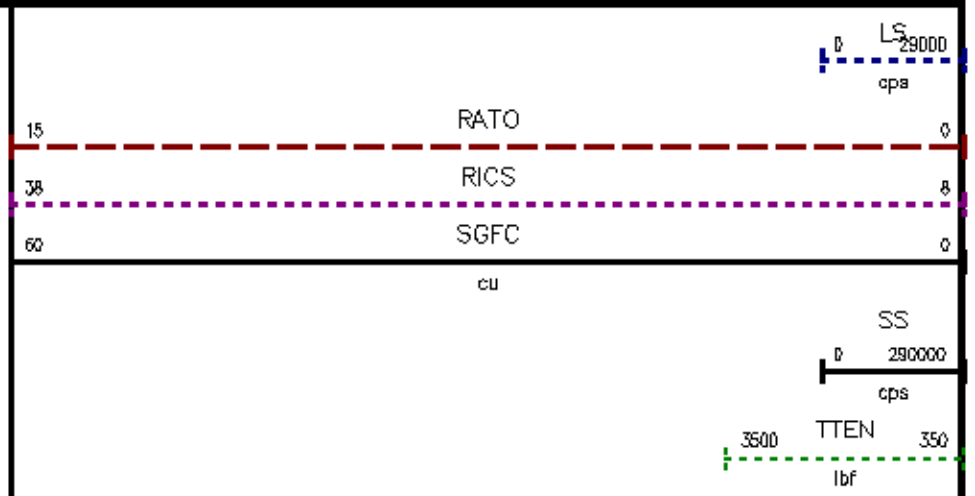
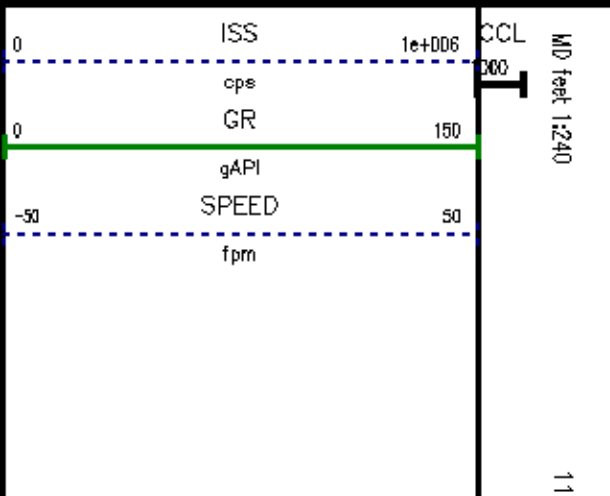
Well : PCU 296-546

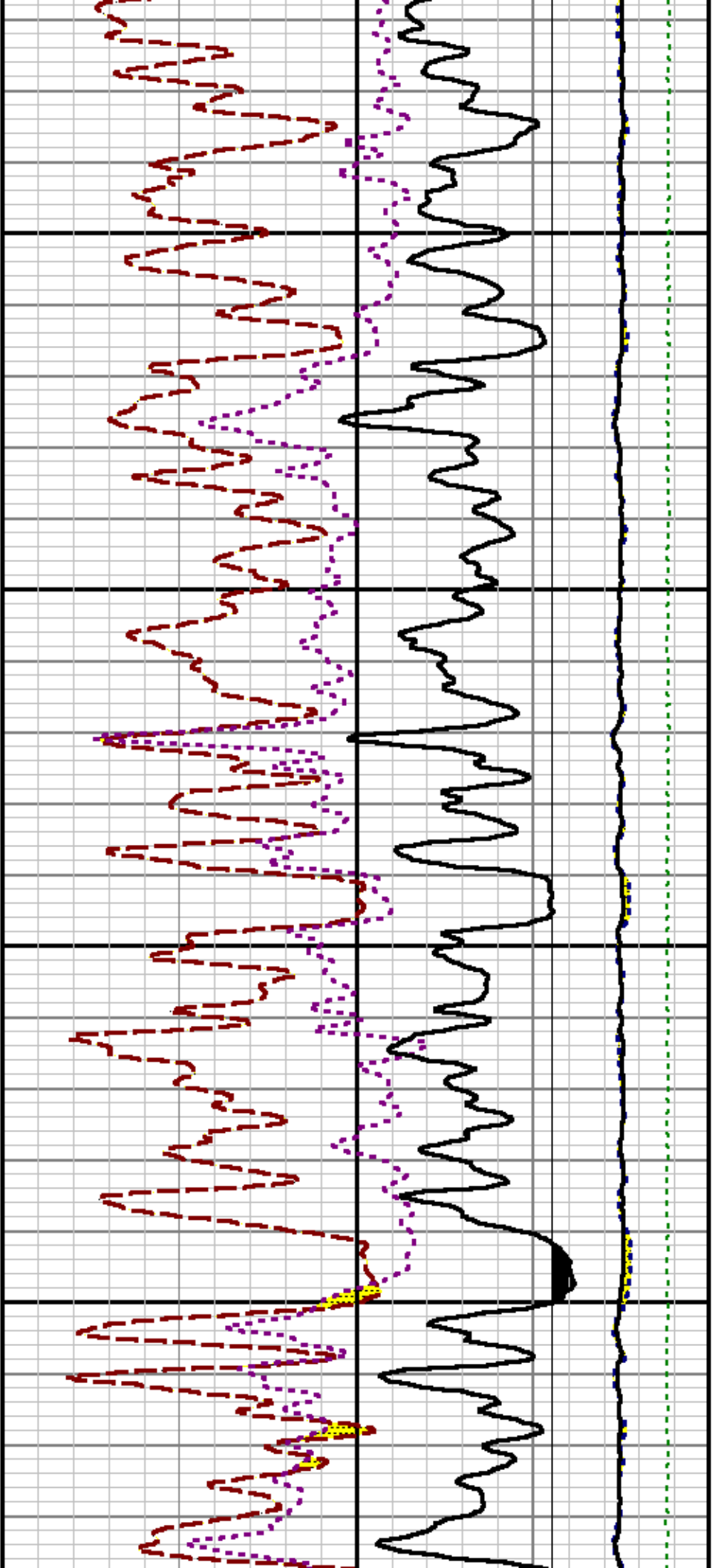
File Name : d:\well\data\agrpm\repeat.txt

Mode : PlotMgr 5.4.5D4

Interval : 11000.00 - 11501.00 feet UP

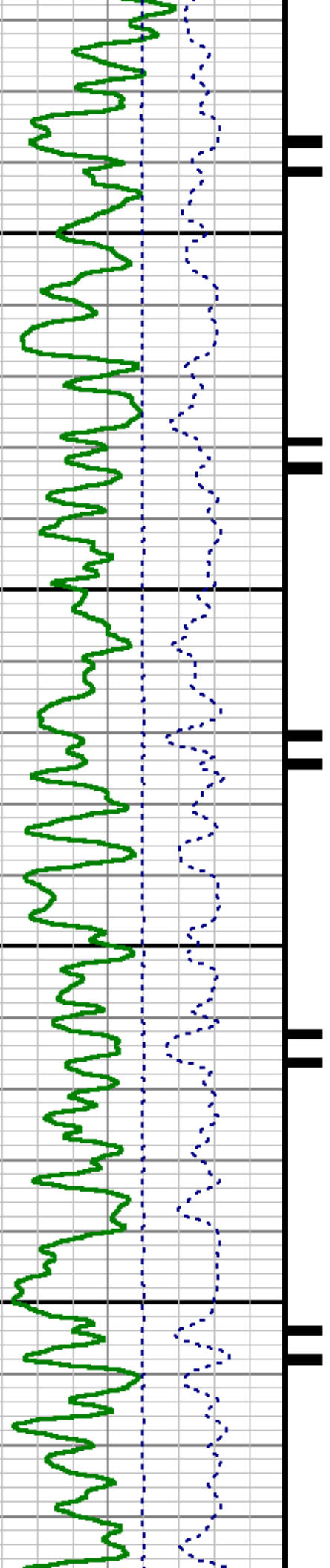
Created : 7/19/2011 2:20:30 PM

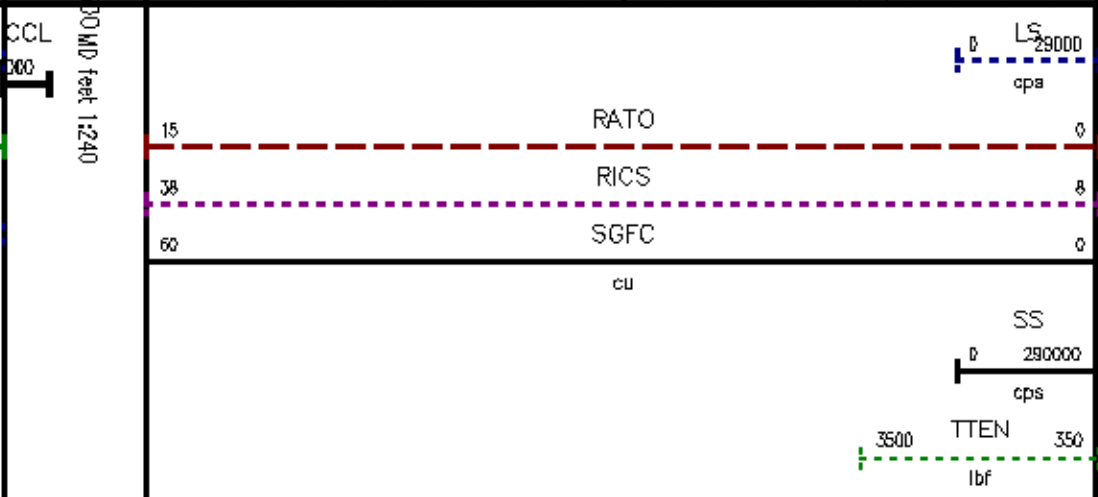
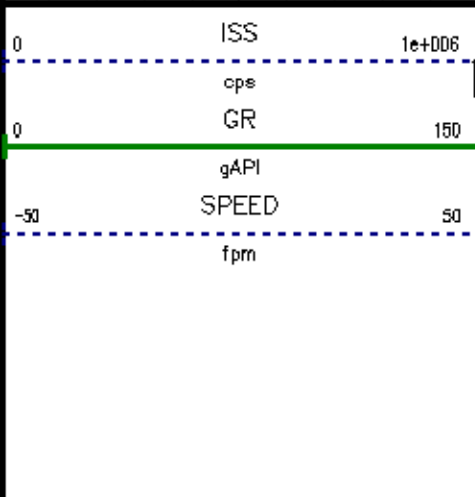
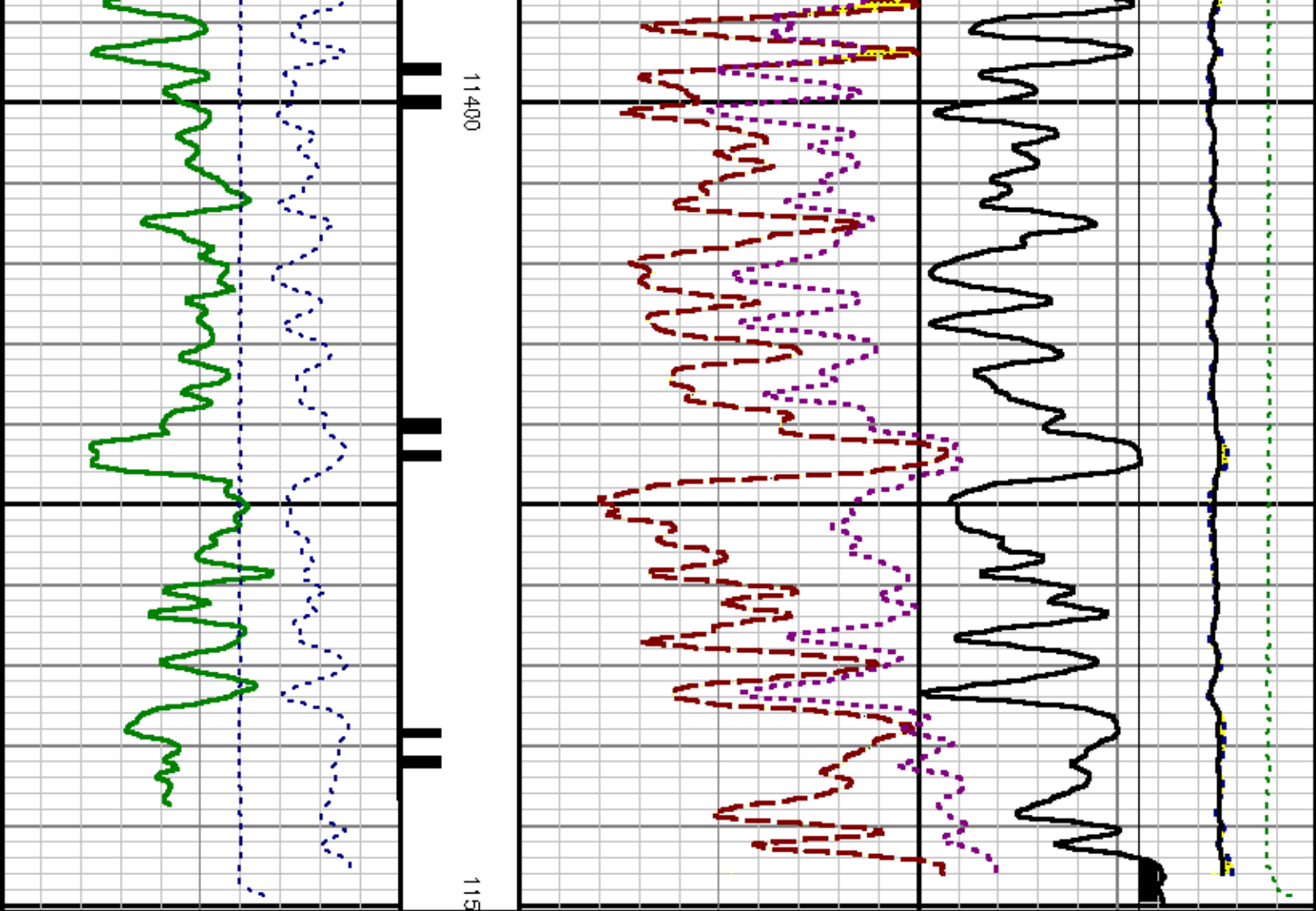




11200

11300





CALIBRATION SUMMARY

GAMMA RAY

Calibration File: C:\cgas\calver\GR\636J1.cal

CALIBRATION SUMMARY

DATE/TIME PERFORMED:	Mon Jun 20 16:05:41 2011	TOOL SERIES:	2812LA	ASSET:	636	SEQ:	J1
Calibrator #	Background [cps]	Calibrator On [cps]	Multiplicative	Background [api]	Calibrator On [api]	Differential [api]	
S2K DA612	53.71	281.53	0.922	49.51	259.51	210.00	

Verification File: C:\cgas\calver\GR\636J1.VP

PRIMARY VERIFICATION

DATE/TIME PERFORMED:	Mon Jun 20 16:10:11 2011	TOOL SERIES:	2812LA	ASSET:	636	SEQ:	J1
Calibrator #	Background [cps]	Calibrator On [cps]	Multiplicative	Background [api]	Calibrator On [api]	Differential [api]	
S2K DA612	54.56	280.29	0.922	50.29	258.36	208.07	

PNC

Calibration File: C:\cgas\calver\PNC\753JU.cal

PNC 3D CALIBRATION SUMMARY

DATE/TIME PERFORMED:	Mon Jul 11 10:31:18 2011	TOOL SERIES:	8281XA	ASSET:	753	SEQ:	JU
----------------------	--------------------------	--------------	--------	--------	-----	------	----

Calibrator #	Source #
SHOP SHOP	8281AA 11710723

	ISS	Mtr Vltz (V)	SS Gain	LS Gain	XLS Gain	EA Temp (degF)	Sync Delay (usec)	RCAL
Raw Data	821620	128.00	2197.00	2383.00	2148.00	139.17	15.00	1.0441
Interpolated	1300000	147.41	2218.86	2379.82	2145.10			

	ISS	BKS	BKL	BKX	SGA 1	SDA 1	SGA 2	SDA 2
Raw Data	821620	6327.36	1022.64	167.43	25.81	0.13	24.26	0.26
					25.35 26.15	0.00 0.20	23.60 24.80	0.00 0.40

	ISS	ILS	IXS	SS	SS2	LS	CSS	CLS
Raw Data	821620	184376.05	27743.57	97232.09	34575.96	9479.68	58945.88	15230.59
Fit Quality %		1.86	1.80	1.12	1.07	1.77	1.02	1.74

	ISS	RBOR	RIN ISS/ILS	RIN13 ISS/IXS	RICS ISS/CSS	RATO SS/LS	RTWO SS2/LS	RONE CSS/CLS
Raw Data	821620	1.44	4.46	29.62	13.94	10.26	3.65	3.87
		1.42 1.45	3.55 5.21	22.20 32.10	10.99 16.34	10.06 11.10	3.57 3.95	3.76 4.22

Fit Quality %

0.07	1.23	1.24	0.21	0.93	0.93	0.95								
1415152	1.44	4.39	29.17	13.96	10.10	3.59	3.81							
	1.42	1.45	4.33	5.52	27.60	32.70	13.70	16.34	10.06	11.10	3.57	3.95	3.76	4.22

Reduced

TOOL DIAGRAM

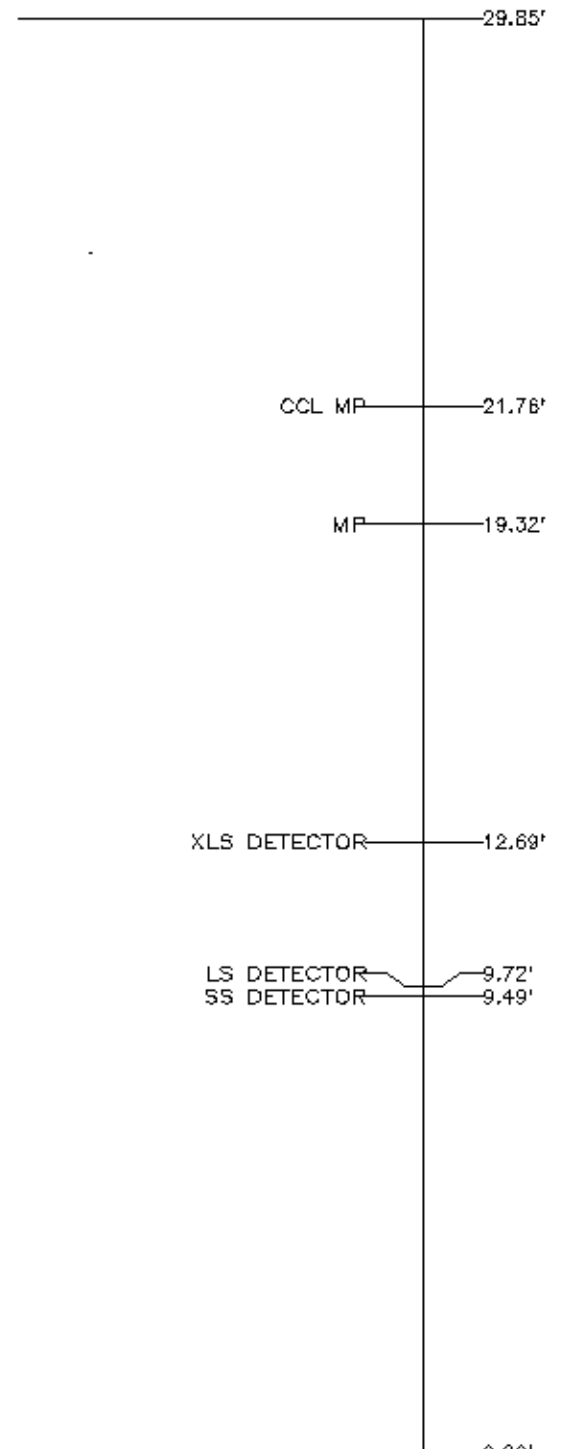
OTA SHORT CABLE HEAD

PCM POWER SUPPLY (8250EA)

TELEMETRY / CCL (8248EA)

SONDEX GAMMA RAY (2812LA)

RESERVOIR PERFORMANCE MONITOR (8281XA)



Total Length: 29.85'
Total Weight: Not Available
Max Diameter: 0' 1.70"

0.00



Baker Atlas



Company	EXXONMOBIL PRODUCTION COMPANY		
Well	PCU 296-5A6		
Field	PICEANCE CREEK		
County	RIO BLANCO	State	COLORADO

File No:	CH039002
API No:	05103112400000

Location:
SHL: 692' FWL & 535' FWL

SEC: 5 TWP: 2S RGE: 86W

Elevations

KB 7339.2 ft
DF 7338.2 ft
GL 7309 ft

