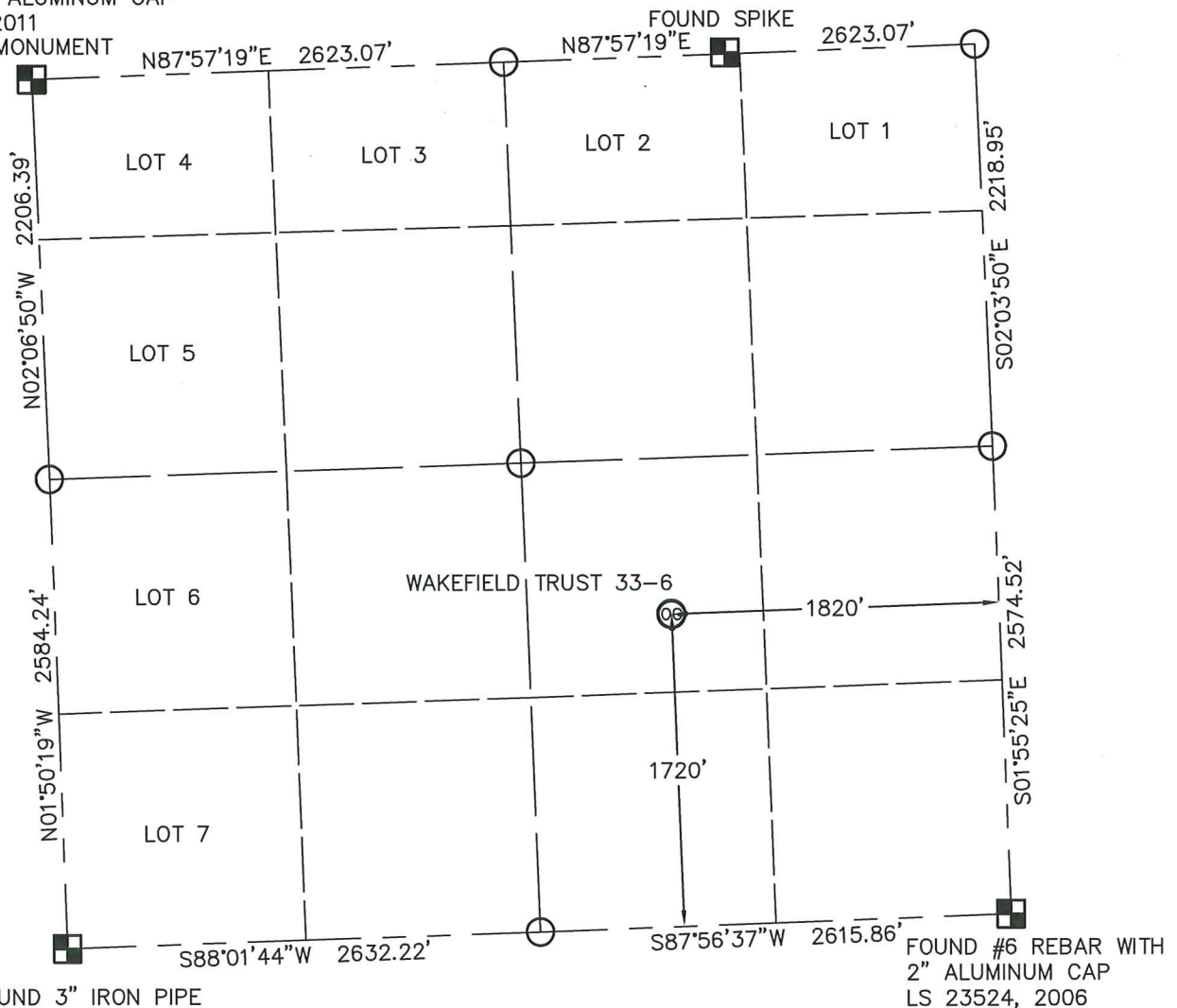
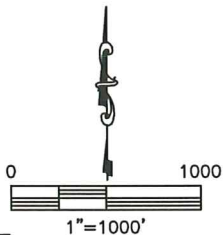


## WELL LOCATION CERTIFICATE

WAKEFIELD TRUST 33-6

THIS MAP DOES NOT REPRESENT A BOUNDARY SURVEY

SECTION: 6  
TOWNSHIP: 1S  
RANGE: 45WFOUND 3" IRON PIPE  
FILLED WITH CONCRETE  
SET 3 1/4" ALUMINUM CAP  
LS 38106, 2011  
ON FOUND MONUMENTFOUND 3" IRON PIPE  
WITH 3 1/2" BRASS CAP  
GLO, 1912In accordance with a request from DAVID LEDET with NOBLE ENERGY INC.King Surveyors Inc. has determined the surface location of WAKEFIELD TRUST 33-6 to be 1720' from the SOUTH line and 1820' from the EAST line, as measured at right angles, from the section lines of Section 6, Township 1 South, Range 45 West of the Sixth Principal Meridian, County of Yuma, State of Colorado.I hereby state that this Well Location Certificate was prepared by me, or under my direct supervision, that the fieldwork was completed on 7-19-2011, for and on behalf of NOBLE ENERGY INC. That this is not a Land Survey Plat or an Improvement Survey Plat, and that it is not to be relied upon for establishment of fence, building, or other future improvement lines.

## SURFACE LOCATION

LATITUDE: 39.99452°N  
LONGITUDE: 102.45550°W  
PDOP: 1.3  
ELEV: 3888'  
1/4, 1/4: NW1/4 SE1/4  
NEAREST PROPERTY LINE: 1720' SOUTH

## NOTE:

- 1) Bearings shown are Grid Bearings of the Colorado State Plane Coordinate System, North Zone, North American Datum 1983/2007. The lineal dimensions as contained herein are based upon the "U.S. Survey Foot."
- 2) Ground elevations are based on an observed GPS elevation (NAVD 1988 DATUM).
- 3) IMPROVEMENTS: See LOCATION DRAWING exhibit for all visible improvements within 400' of disturbed area.
- 4) SURFACE USE: PASTURE
- 5) OPERATOR: BEN ADSIT

## NOTE

According to Colorado law, you must commence any legal action based upon any defect in this W.L.C. within three years after you discover such defect. In no event, may any action based upon any defect in this survey be commenced more than ten years after the date of the certificate shown hereon. (13-80-105 C.R.S.)

## LEGEND

- = FOUND ALIQUOT MONUMENT AS DESCRIBED
- = CALCULATED POSITION (WITHOUT NOTES FOR COURT ORDERED RESURVEY)
- = SET ALIQUOT MONUMENT AS DESCRIBED

Colorado Licensed Professional Land Surveyor #38106  
Michael Chad Dilka - On Behalf Of King Surveyors, Inc.  
8/25/2011  
PROJECT#: 2011299