

**CHEVRON - MID-CONTINENT EBIZ  
11111 S WILCREST DR - DO NOT MAIL  
HOUSTON, Texas**

SKR  
SKR 698-09-AV-12

**H&P 318/H &P/318**

## **Post Job Summary**

# **Cement Surface Casing**

Prepared for:  
Date Prepared: 03-15-09  
Version: 1

Service Supervisor: BLANCHETTE, JAMES

Submitted by:

**HALLIBURTON**

*The Road to Excellence Starts with Safety*

Sold To #: 338668	Ship To #: 2713355	Quote #:	Sales Order #: 6563543
Customer: CHEVRON - MID-CONTINENT EBIZ		Customer Rep: TATUM, ELMER	
Well Name: SKR	Well #: 698-09-AV-12	API/UWI #: 05-045-17291	
Field: PICEANCE	City (SAP): PARACHUTE	County/Parish: Garfield	State: Colorado
Lat: N 39.551 deg. OR N 39 deg. 33 min. 3.737 secs.		Long: W 108.33 deg. OR W -109 deg. 40 min. 12.583 secs.	
Contractor: H&P 318	Rig/Platform Name/Num: H & P 318		
Job Purpose: Cement Surface Casing			
Well Type: Development Well		Job Type: Cement Surface Casing	
Sales Person: DUNNING, DUSTIN		Srvc Supervisor: BLANCHETTE, JAMES	MBU ID Emp #: 371360

### Job Personnel

HES Emp Name	Exp Hrs	Emp #	HES Emp Name	Exp Hrs	Emp #	HES Emp Name	Exp Hrs	Emp #
BANKS, BRENT A	3	371353	BLANCHETTE, JAMES George	3	371360	GAMBLE, BENJAMIN T	3	446666
Lunceford, Steven	3	457512	O'Neal, Tally	3	456423	SAUTER, MARK A	3	410526

### Equipment

HES Unit #	Distance-1 way	HES Unit #	Distance-1 way	HES Unit #	Distance-1 way	HES Unit #	Distance-1 way
10001431	120 mile	10214529C	120 mile	10624108	120 mile	10951247	120 mile
10973571	120 mile						

### Job Hours

Date	On Location Hours	Operating Hours	Date	On Location Hours	Operating Hours	Date	On Location Hours	Operating Hours
03-15-09	3	1						
TOTAL								

Total is the sum of each column separately

### Job

Job						Job Times				
Formation Name							Date	Time	Time Zone	
Formation Depth (MD)		Top			Bottom					
Form Type				BHST			Called Out	15 - Mar - 2009	15:30	MST
Job depth MD		1050. ft		Job Depth TVD		1050. ft	On Location	15 - Mar - 2009	18:55	MST
Water Depth				Wk Ht Above Floor		4. ft	Job Started	15 - Mar - 2009	21:27	MST
Perforation Depth (MD)		From			To		Job Completed	15 - Mar - 2009	22:23	MST
							Departed Loc	15 - Mar - 2009	23:45	MST

### Well Data

Description	New / Used	Max pressure psig	Size in	ID in	Weight lbm/ft	Thread	Grade	Top MD ft	Bottom MD ft	Top TVD ft	Bottom TVD ft

### Sales/Rental/3<sup>rd</sup> Party (HES)

Description	Qty	Qty uom	Depth	Supplier
PORT. DAS W/CEMWIN;ACQUIRE W/HES, ZI	1	JOB		
ADC (AUTO DENSITY CTRL) SYS, /JOB,ZI	1	JOB		
PLUG,CMTG,TOP,8 5/8,HWE,7.20 MIN/8.09 MA	1	EA		

### Tools and Accessories

Type	Size	Qty	Make	Depth	Type	Size	Qty	Make	Depth	Type	Size	Qty	Make
Guide Shoe					Packer					Top Plug	8 5/8	1	
Float Shoe					Bridge Plug					Bottom Plug			
Float Collar					Retainer					SSR plug set			
Insert Float										Plug Container	8 5/8	1	
Stage Tool										Centralizers			

### Miscellaneous Materials

Gelling Agt	Conc	Surfactant	Conc	Acid Type	Qty	Conc	%
Treatment Fld	Conc	Inhibitor	Conc	Sand Type	Size	Qty	



Fluid Data										
Stage/Plug #: 1										
Fluid #	Stage Type	Fluid Name	Qty	Qty uom	Mixing Density lbm/gal	Yield ft <sup>3</sup> /sk	Mix Fluid Gal/sk	Rate bbl/min	Total Mix Fluid Gal/sk	
1	DYE SPACER WITH POLYFLAKE		50	bbl	8.33	.0	.0	4		
2	Lead Cement	VERSACEM (TM) SYSTEM (452010)	140	sacks	12.3	2.38	13.75	6	13.75	
3	Tail Cement	VERSACEM (TM) SYSTEM (452010)	155	sacks	12.8	2.11	11.75	6	11.75	
4	H2O DISPLACEMENT		63	bbl	8.33	.0	.0	8		

Calculated Values		Pressures		Volumes			
Displacement	63	Shut In: Instant		Lost Returns	0	Cement Slurry	117.5
Top Of Cement	SURFACE	5 Min		Cement Returns	30	Actual Displacement	63
Frac Gradient		15 Min		Spacers	50	Load and Breakdown	
						Treatment	
						Total Job	230.5

Rates							
Circulating		Mixing	6	Displacement	8	Avg. Job	7
Cement Left In Pipe	Amount	42.69 ft	Reason	Shoe Joint			
Frac Ring # 1 @	ID	Frac ring # 2 @	ID	Frac Ring # 3 @	ID	Frac Ring # 4 @	ID

The Information Stated Herein Is Correct	Customer Representative Signature

*The Road to Excellence Starts with Safety*

Sold To #: 338668	Ship To #: 2713355	Quote #:	Sales Order #: 6563543
Customer: CHEVRON - MID-CONTINENT EBIZ	Customer Rep: TATUM, ELMER		
Well Name: SKR	Well #: 698-09-AV-12	API/UWI #: 05-045-17291	
Field: PICEANCE	City (SAP): PARACHUTE	County/Parish: Garfield	State: Colorado
Legal Description:			
Lat: N 39.551 deg. OR N 39 deg. 33 min. 3.737 secs.		Long: W 108.33 deg. OR W -109 deg. 40 min. 12.583 secs.	
Contractor: H&P 318	Rig/Platform Name/Num: H & P 318		
Job Purpose: Cement Surface Casing			Ticket Amount:
Well Type: Development Well	Job Type: Cement Surface Casing		
Sales Person: DUNNING, DUSTIN	Srvc Supervisor: BLANCHETTE, JAMES	MBU ID Emp #: 371360	

Activity Description	Date/Time	Cht #	Rate bbl/min	Volume bbl		Pressure psig		Comments
				Stage	Total	Tubing	Casing	
Safety Meeting	03/15/2009 16:18							WITH ALL HES EE'S
Depart from Service Center or Other Site	03/15/2009 16:30							
Arrive at Location from Service Center	03/15/2009 18:55							RIG STILL RUNNING CASING
Safety Meeting - Assessment of Location	03/15/2009 19:10							
Safety Meeting - Pre Rig-Up	03/15/2009 19:20							WITH ALL HES EE'S
Rig-Up Equipment	03/15/2009 19:30							1-F450 PICKUP, 1-F150 PICKUP, 1-HT400 PUMP TRUCK, 1-660 CEMENT BULK TRUCK
Safety Meeting - Pre Job	03/15/2009 21:00							WITH ALL HES EE'S AND RIG CREW
Start Job	03/15/2009 21:27							TD 1050, TP 1033, SJ 42.69, MW 9.0 PPG
Pump Water	03/15/2009 21:27		1	1	1		85.0	FRESH WATER
Test Lines	03/15/2009 21:29		0.4				4000.0	TEST LINES TO 3000PSI, TEST OK
Pump Spacer	03/15/2009 21:31		4	50	50		185.0	FRESH WATER FOR THE FIRST 30 BBLS AND THE LAST 20 BBLS HAD POLYFLAKE IN IT, SLOWED RATE AT 45 GONE ON SPACER TO MIX TUB, SLOW RATE DOWN TO 2BPM
Pump Lead Cement	03/15/2009 21:45		6	59.3	59.3		268.0	140 SKS OF VERSACEM PUMPED @ 12.3PPG, YIELD 2.38, WATER 13.75

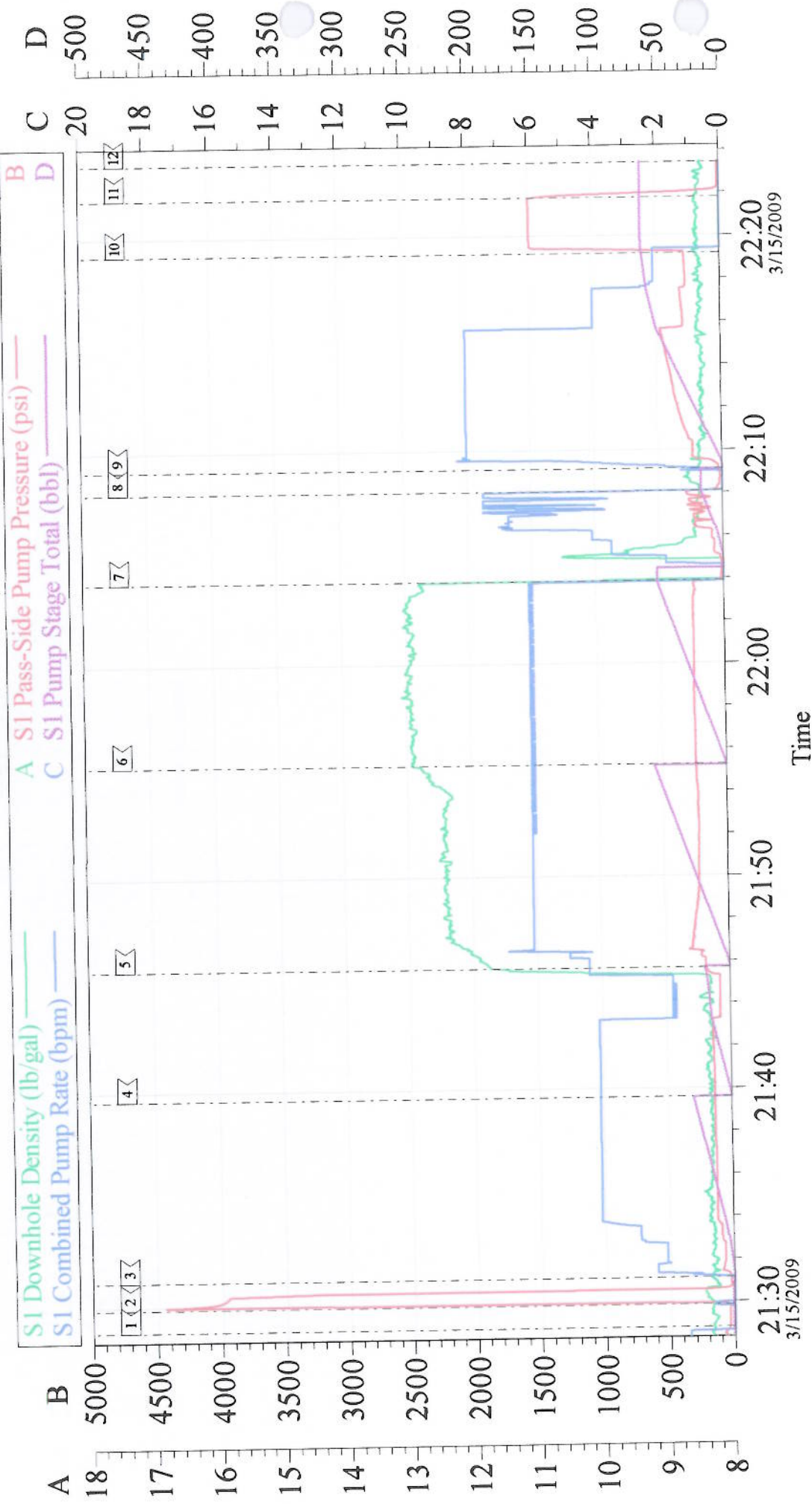


Activity Description	Date/Time	Cht #	Rate bbl/min	Volume bbl		Pressure psig		Comments
				Stage	Total	Tubing	Casing	
Pump Tail Cement	03/15/2009 21:55		6	58.2	58.2		248.0	155 SKS OF VERSACEM PUMPED @ 12.8PPG, YIELD 2.11, WATER 11.75
Shutdown	03/15/2009 22:04							
Clean Lines	03/15/2009 22:05							PER COMPANY REP WE WASHED UP PUMPS BEFORE WE DROPPED PLUG AND PUMPED DISPLACEMENT, WE USED 17 BBLs OF WATER TO WASH UP
Drop Plug	03/15/2009 22:08							TOP PLUG, DRILLER VERIFIED PLUG LEFT
Pump Displacement	03/15/2009 22:09		8	63	63		468.0	FRESH WATER
Slow Rate	03/15/2009 22:16		4	50	50		300.0	
Slow Rate	03/15/2009 22:18		2	58	58		274.0	
Bump Plug	03/15/2009 22:19		2	63	63		1464.0	PER COMPANY REP WE BUMPED PLUG 1000PSI OVER CALCULATED PRESSURE
Check Floats	03/15/2009 22:21							GOOD RETURNS THROUGHOUT JOB, NO MOVEMENT OF PIPE THROUGHOUT JOB, WE CIRCULATED 30 BBLs OF CEMENT TO THE PIT=71 SKS OF CEMENT
End Job	03/15/2009 22:23							THANK YOU FOR USING GRAND JUNCTION HALLIBURTON CEMENT DEPARTMENT, JIM BLANCHETTE AND CREW

EVENT #	EVENT	VOLUME	SACKS	WEIGHT	YIELD	GAL/ SK
1	Start Job					
	FILL LINES	2				
6	Test Lines	3000.0				
9	H2O Spacer	50.0				
14	LEAD CEMENT	59.3	140	12.3	2.38	13.75
15	TAIL CEMENT	58.2	155	12.8	2.11	11.75
	SHUTDOWN/CLEAN PUMPS					
	DROP TOP PLUG					
25	DISPLACEMENT	63.0				
	SLOW RATE	50.0				
	LAND PLUG	223+ 1000				
	CHECK FLOATS					
	END JOB		Do Not Overdisplace			
DISPLACEMENT	TOTAL PIPE	SHOE JOINT LENGTH	FLOAT COLLAR	BBL/FT	H2O REQ.	
62.98	1033	42.69	990.31	0.0636	300	
PSI TO LIFT	366	*****Use Mud Scales on Each Tier*****				
Total Displacement	62.98					
CALCULATED PSI LAND		373	TOTAL FLUID PUMPED		233	
Collapse	1370	Burst	2950	SO#	6563543	



# Chevron Surface



Customer: Chevron	Job Date: 15-Mar-2009	Sales Order #: 6563543
Well Description: SKR 598-09-AV-12	Job Type: Surface	ADC Used: Yes
Company Rep: Elmer Tatum	Cement Supervisor: Jim Blanchette	Elite #: 12