

---

# **CHEVRON - MID-CONTINENT EBIZ**

---

**SKR 698-09-AV-12  
SKINNER RIDGE  
Garfield County , Colorado**

## **Cement Production Casing** **01-May-2009**

### **Job Site Documents**

### The Road to Excellence Starts with Safety

Sold To #: 338668	Ship To #: 2713355	Quote #:	Sales Order #: 6646359
Customer: CHEVRON - MID-CONTINENT EBIZ		Customer Rep: Meier, Dan	
Well Name: SKR	Well #: 698-09-AV-12	API/UWI #: 05-045-17291	
Field: SKINNER RIDGE	City (SAP): PARACHUTE	County/Parish: Garfield	State: Colorado
Lat: N 39.551 deg. OR N 39 deg. 33 min. 3.737 secs.		Long: W 108.33 deg. OR W -109 deg. 40 min. 12.583 secs.	
Contractor: H&P 318	Rig/Platform Name/Num: H&P 318		
Job Purpose: Cement Production Casing			
Well Type: Development Well		Job Type: Cement Production Casing	
Sales Person: DUNNING, DUSTIN		Srv Supervisor: NELSON, RYAN	MBU ID Emp #: 386514

### Job Personnel

HES Emp Name	Exp Hrs	Emp #	HES Emp Name	Exp Hrs	Emp #	HES Emp Name	Exp Hrs	Emp #
DUBON, TODD N	11.5	443351	MASON, KYLE T	11.5	426148	NELSON, RYAN Cody	11.5	386514
OLDS, RYAN John	11.5	418018	WEAVER, CARLTON Russell	11.5	457698	WHITE, EDWARD W	11.5	424173
YOUNG, JEREMY R	11.5	418013						

### Equipment

HES Unit #	Distance-1 way	HES Unit #	Distance-1 way	HES Unit #	Distance-1 way	HES Unit #	Distance-1 way
10567589C	mile	10616651C	mile	10951245	mile	10973571	mile
10995027	mile						

### Job Hours

Date	On Location Hours	Operating Hours	Date	On Location Hours	Operating Hours	Date	On Location Hours	Operating Hours
5-1-09	11.5	3						
TOTAL								

Total is the sum of each column separately

### Job

Formation Name	Formation Depth (MD)	Top	Bottom	Form Type	Job depth MD	Water Depth	Perforation Depth (MD)	From	To	Job Times	Date	Time	Time Zone
				BHST	6300. ft					Called Out	01 - May - 2009	06:00	MST
										On Location	01 - May - 2009	10:30	MST
										Job Started	01 - May - 2009	17:50	MST
										Job Completed	01 - May - 2009	19:25	MST
										Departed Loc	01 - May - 2009	21:00	MST

### Well Data

Description	New / Used	Max pressure psig	Size in	ID in	Weight lbf/ft	Thread	Grade	Top MD ft	Bottom MD ft	Top TVD ft	Bottom TVD ft
7 7/8 Open Hole Section				7.875				1033.	6300.		
4 1/2 Production Casing			4.5	4.	11.6		N-80	0	6277.		
8 5/8 Surface Casing			8.625	8.097	24.			0	1033.		

### Sales/Rental/3<sup>rd</sup> Party (HES)

Description	Qty	Qty uom	Depth	Supplier
PLUG,CMTG,TOP,4 1/2,HWE,3.65 MIN/4.14 MA	1	EA		
PORT. DAS W/CEMWIN;ACQUIRE W/HES, ZI	1	JOB		
ADC (AUTO DENSITY CTRL) SYS, /JOB,ZI	1	JOB		

### Tools and Accessories

Type	Size	Qty	Make	Depth	Type	Size	Qty	Make	Depth	Type	Size	Qty	Make
Guide Shoe					Packer					Top Plug	4.5	1	HES
Float Shoe					Bridge Plug					Bottom Plug			
Float Collar					Retainer					SSR plug set			
Insert Float										Plug Container	4.5	1	HES
Stage Tool										Centralizers			



**HALLIBURTON****Cementing Job Summary**

Miscellaneous Materials												
Gelling Agt		Conc		Surfactant		Conc		Acid Type		Qty		Conc %
Treatment Fld		Conc		Inhibitor		Conc		Sand Type		Size		Qty
Fluid Data												
Stage/Plug #: 1												
Fluid #	Stage Type	Fluid Name	Qty	Qty uom	Mixing Density lbm/gal	Yield ft <sup>3</sup> /sk	Mix Fluid Gal/sk	Rate bbl/min	Total Mix Fluid Gal/sk			
1	Dyed Polyflake Spacer		40	bbl	8.33	.0	.0	.0				
2	Lead Cement	VARICEM (TM) CEMENT (452009)	330	sacks	12.8	1.61	7.31					
3	Tail Cement	VARICEM (TM) CEMENT (452009)	660	sacks	13.2	1.47	6.32					
4	KCL DISPLACEMENT		96.5	bbl	8.43	.0	.0	.0				
Calculated Values			Pressures			Volumes						
Displacement	96.5	Shut In: Instant		Lost Returns	No	Cement Slurry	267.4	Pad				
Top Of Cement		5 Min		Cement Returns		Actual Displacement	96.5	Treatment				
Frac Gradient		15 Min		Spacers Returns	25 bbl	Load and Breakdown		Total Job				
Rates												
Circulating		Mixing	6	Displacement	8	Avg. Job	6					
Cement Left In Pipe	Amount	48.7 ft	Reason	Shoe Joint								
Frac Ring # 1 @	ID	Frac ring # 2 @	ID	Frac Ring # 3 @	ID	Frac Ring # 4 @	ID					
The Information Stated Herein Is Correct				Customer Representative Signature								

*The Road to Excellence Starts with Safety*

Sold To #: 338668	Ship To #: 2713355	Quote #:	Sales Order #: 6646359
Customer: CHEVRON - MID-CONTINENT EBIZ	Customer Rep: Meier, Dan		
Well Name: SKR	Well #: 698-09-AV-12	API/UWI #: 05-045-17291	
Field: SKINNER RIDGE	City (SAP): PARACHUTE	County/Parish: Garfield	State: Colorado
Legal Description:			
Lat: N 39.551 deg. OR N 39 deg. 33 min. 3.737 secs.		Long: W 108.33 deg. OR W -109 deg. 40 min. 12.583 secs.	
Contractor: H&P 318	Rig/Platform Name/Num: H&P 318		
Job Purpose: Cement Production Casing			Ticket Amount:
Well Type: Development Well	Job Type: Cement Production Casing		
Sales Person: DUNNING, DUSTIN	Srv Supervisor: NELSON, RYAN	MBU ID Emp #: 386514	

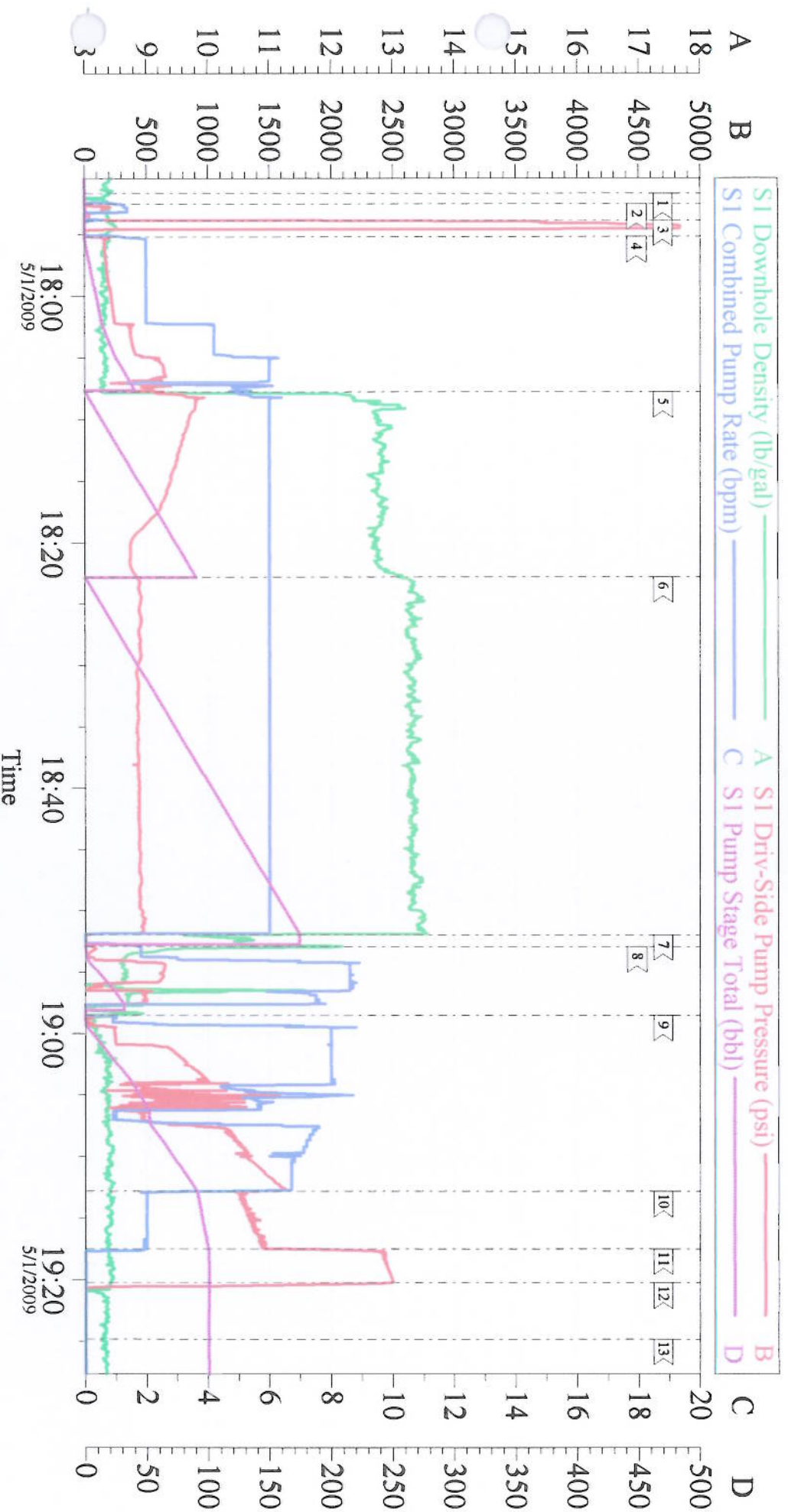
Activity Description	Date/Time	Cht #	Rate bbl/min	Volume bbl		Pressure psig		Comments
				Stage	Total	Tubing	Casing	
Call Out	05/01/2009 06:00							Rusty Weaver is safety observer today.
Arrive At Loc	05/01/2009 10:30							Rig running casing
Assessment Of Location Safety Meeting	05/01/2009 10:35							
Pre-Rig Up Safety Meeting	05/01/2009 10:40							
Rig-Up Equipment	05/01/2009 10:45							
HES or HES Sub-Contractor Equipment Problem - Star	05/01/2009 14:00							Fan on pony motor detached from shaft on motor. Called for new truck.
Time Customer is Ready to Turn Control Over to HES	05/01/2009 15:00							
Pre-Job Safety Meeting	05/01/2009 17:30							
HES or HES Sub-Contractor Equipment Problem - End	05/01/2009 17:30							New truck arrived and rigged up.
Start Job	05/01/2009 17:51							TD- 6300' TP-6277' SJ- 48.7' CASING 4 1/2" N- 80 HOLE 7 7/8" MUD 10.3 SURFACE @ 1033'
Other	05/01/2009 17:52			1			220.0	Fill lines
Test Lines	05/01/2009 17:53						4850.0	
Pump Spacer 1	05/01/2009 17:54		6	40			680.0	Fresh water with Poly-Flake
Pump Lead Cement	05/01/2009 18:07		6	94.6			675.0	330 sks 12.8 ppg 1.61 yield 7.31 gal/sk
Pump Tail Cement	05/01/2009 18:22		6	172.8			450.0	660 sks 13.2 ppg 1.47 yield 6.32 gal/sk
Shutdown	05/01/2009 18:52							



## Cementing Job Log

Activity Description	Date/Time	Cht #	Rate bbl/min	Volume bbl		Pressure psig		Comments
				Stage	Total	Tubing	Casing	
Clean Lines	05/01/2009 18:53							
Drop Top Plug	05/01/2009 18:57							
Pump Displacement	05/01/2009 18:58		8	96.5			1515.0	Fresh Water with 2% KCL added
Slow Rate	05/01/2009 19:12		2	85			1460.0	
Bump Plug	05/01/2009 19:17		2	96.5			2160.0	
Check Floats	05/01/2009 19:20							Floats Held
End Job	05/01/2009 19:25							Well was circulated prior to the job. Good returns throughout the job. Pipe was static throughout the job. Thank you for using Halliburton-Ryan Nelson & Crew

# Chevron 4 1/2" Production



Local Event Log			
1 Start Job	17:51:42	2 Fill Lines	17:52:33
4 Pump Spacer	17:55:12	5 Pump Lead Cement	18:07:45
7 Shut Down/Drop Plug	18:51:56	8 Clean Lines	18:52:54
10 Slow Rate	19:12:50	11 Bump Plug	19:17:30
13 End Job	19:24:49	12 Check Floats	19:20:16
		3 Pressure Test	17:53:53
		6 Pump Tail Cement	18:22:46
		9 Pump Displacement	18:58:30

Customer: CHEVRON  
Well Description: SKR698-09-AV-12  
Company Rep: Elmer Tatum

Job Date: 01-May-2009  
Job Type: Production  
Cement Supervisor: Ryan Nelson

Sales Order #: 6646359  
ADC Used: Yes  
Elite #: 4