

**CHEVRON - MID-CONTINENT EBIZ
11111 S WILCREST DR - DO NOT MAIL
HOUSTON, Texas**

SKR
SKR 698-09-AV-09

H&P 318/H&P/318

Post Job Summary

Cement Surface Casing

Prepared for:
Date Prepared:
Version: 1

Service Supervisor: YOUNG, JEREMY

Submitted by:

HALLIBURTON

The Road to Excellence Starts with Safety

Sold To #: 338668		Ship To #: 2713347		Quote #:		Sales Order #: 6579206	
Customer: CHEVRON - MID-CONTINENT EBIZ				Customer Rep: MEIER, DAN			
Well Name: SKR		Well #: 698-09-AV-09		API/UWI #: 05-045-17294			
Field: SKINNER RIDGE		City (SAP): PARACHUTE		County/Parish: Garfield		State: Colorado	
Lat: N 39.551 deg. OR N 39 deg. 33 min. 3.704 secs.				Long: W 108.33 deg. OR W -109 deg. 40 min. 12.738 secs.			
Contractor: H&P 318		Rig/Platform Name/Num: H&P 318					
Job Purpose: Cement Surface Casing							
Well Type: Development Well				Job Type: Cement Surface Casing			
Sales Person: DUNNING, DUSTIN				Srv Supervisor: YOUNG, JEREMY		MBU ID Emp #: 418013	

Job Personnel								
HES Emp Name	Exp Hrs	Emp #	HES Emp Name	Exp Hrs	Emp #	HES Emp Name	Exp Hrs	Emp #
BARKER, RYAN	7.0	458751	LESLIE, MICHAEL D	7.0	320605	LUNCEFORD, STEVEN John	7.0	457512
MAIN, CHAD R	7.0	335770	REEVES, BRANDON W	7.0	287883	STILLSON, ERIC W	7.0	393789
YOUNG, JEREMY R	7.0	418013						

Equipment							
HES Unit #	Distance-1 way	HES Unit #	Distance-1 way	HES Unit #	Distance-1 way	HES Unit #	Distance-1 way
10025025	60 mile	10296152C	60 mile	10829463	60 mile	10897797	60 mile
10951244	60 mile						

Job Hours								
Date	On Location Hours	Operating Hours	Date	On Location Hours	Operating Hours	Date	On Location Hours	Operating Hours
03/26/2009	4.5	2	03/27/2009	2.5	2			
TOTAL			Total is the sum of each column separately					

Job				Job Times			
Formation Name	Formation Depth (MD)	Top	Bottom	Called Out	Date	Time	Time Zone
Form Type			BHST	On Location	26 - Mar - 2009	12:00	MST
Job depth MD	1050. ft		Job Depth TVD	Job Started	26 - Mar - 2009	19:30	MST
Water Depth			Wk Ht Above Floor	Job Completed	26 - Mar - 2009	23:31	MST
Perforation Depth (MD)	From		To	Job Completed	27 - Mar - 2009	00:19	MST
				Departed Loc	27 - Mar - 2009	02:30	MST

Well Data											
Description	New / Used	Max pressure psig	Size in	ID in	Weight lbm/ft	Thread	Grade	Top MD ft	Bottom MD ft	Top TVD ft	Bottom TVD ft
Surface Casing	Unknown		8.625	7.921	32.				1050.		1050.

Sales/Rental/3 rd Party (HES)				
Description	Qty	Qty uom	Depth	Supplier
PLUG,CMTG, TOP, 8 5/8, HWE, 7.20 MIN/8.09 MA	1	EA		
ADC (AUTO DENSITY CTRL) SYS, /JOB, ZI	1	JOB		
PORT. DAS W/CEMWIN; ACQUIRE W/HES, ZI	1	JOB		

Tools and Accessories													
Type	Size	Qty	Make	Depth	Type	Size	Qty	Make	Depth	Type	Size	Qty	Make
Guide Shoe					Packer					Top Plug	8.625	1	HES
Float Shoe					Bridge Plug					Bottom Plug			
Float Collar					Retainer					SSR plug set			
Insert Float										Plug Container	8.635	1	HES
Stage Tool										Centralizers			

Miscellaneous Materials									
Gelling Agt	Conc	Surfactant	Conc	Acid Type	Qty	Conc	%		
Treatment Fld	Conc	Inhibitor	Conc	Sand Type	Size	Qty			

Fluid Data									
Stage/Plug #: 1									
Fluid #	Stage Type	Fluid Name	Qty	Qty uom	Mixing Density lbm/gal	Yield ft ³ /sk	Mix Fluid Gal/sk	Rate bbl/min	Total Mix Fluid Gal/sk
1	PolyFlake Dyed Spacer		50.00	bbl	.	.0	.0	.0	
2	Lead Cement	VERSACEM (TM) SYSTEM (452010)	140.0	sacks	12.3	2.38	13.75		
	2 %	CAL-SEAL 60, 50 LB BAG (101217146)							
	2 %	ECONOLITE (100001580)							
	0.3 %	VERSASET, 55 LB SK (101376573)							
	5.64 lbm	SALT, 100 LB BAG (100003652)							
	0.125 lbm	POLY-E-FLAKE (101216940)							
	0.25 %	D-AIR 3000 (101007446)							
	13.75 Gal	FRESH WATER							
3	Tail Cement	VERSACEM (TM) SYSTEM (452010)	155.0	sacks	12.8	2.11	11.75		
	2 %	CAL-SEAL 60, 50 LB BAG (101217146)							
	2 %	ECONOLITE (100001580)							
	0.3 %	VERSASET, 55 LB SK (101376573)							
	5.64 lbm	SALT, 100 LB BAG (100003652)							
	11.75 Gal	FRESH WATER							
4	Fresh Water Displacement		63.00	bbl	.	.0	.0	.0	
Calculated Values		Pressures		Volumes					
Displacement	63.2	Shut In: Instant		Lost Returns	0	Cement Slurry	117	Pad	
Top Of Cement	SURFACE	5 Min		Cement Returns	30	Actual Displacement	63.2	Treatment	
Frac Gradient		15 Min		Spacers	50	Load and Breakdown		Total Job	
Rates									
Circulating	8	Mixing	8	Displacement	8	Avg. Job	8		
Cement Left In Pipe	Amount	44 ft	Reason	Shoe Joint					
Frac Ring # 1 @	ID	Frac ring # 2 @	ID	Frac Ring # 3 @	ID	Frac Ring # 4 @	ID		
The Information Stated Herein Is Correct				Customer Representative Signature					

The Road to Excellence Starts with Safety

Sold To #: 338668	Ship To #: 2713347	Quote #:	Sales Order #: 6579206
Customer: CHEVRON - MID-CONTINENT EBIZ		Customer Rep: MEIER, DAN	
Well Name: SKR	Well #: 698-09-AV-09	API/UWI #: 05-045-17294	
Field: SKINNER RIDGE	City (SAP): PARACHUTE	County/Parish: Garfield	State: Colorado
Legal Description:			
Lat: N 39.551 deg. OR N 39 deg. 33 min. 3.704 secs.		Long: W 108.33 deg. OR W -109 deg. 40 min. 12.738 secs.	
Contractor: H&P 318	Rig/Platform Name/Num: H&P 318		
Job Purpose: Cement Surface Casing			Ticket Amount:
Well Type: Development Well		Job Type: Cement Surface Casing	
Sales Person: DUNNING, DUSTIN	Srvs Supervisor: YOUNG, JEREMY	MBU ID Emp #: 418013	

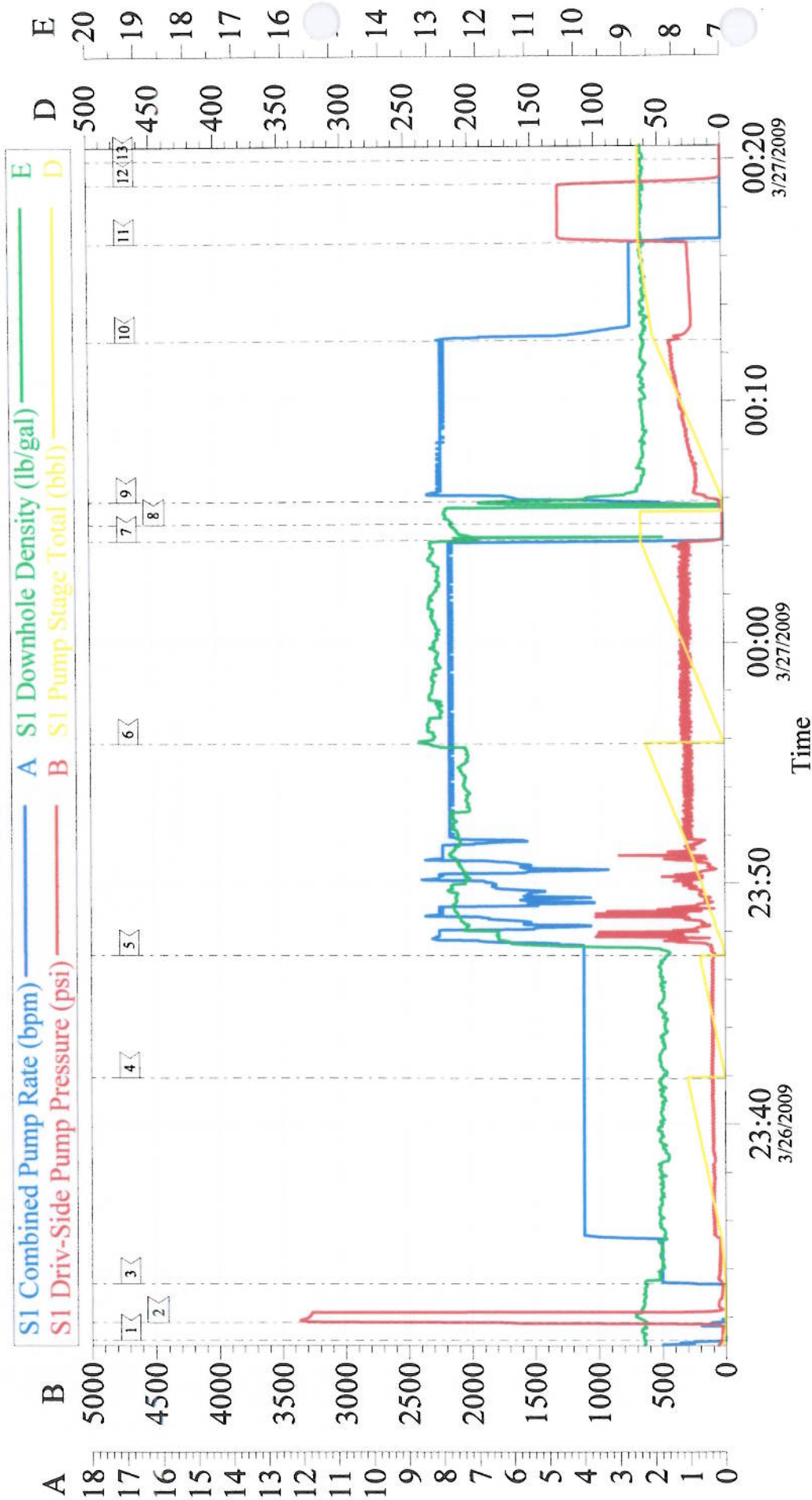
Activity Description	Date/Time	Cht #	Rate bbl/min	Volume bbl		Pressure psig		Comments
				Stage	Total	Tubing	Casing	
Arrive At Loc	03/26/2009 19:30							TD 1050', TP 1037', SHOE 44', MUD WT 9.1 PPG
Assessment Of Location Safety Meeting	03/26/2009 19:45							RIG WAS STILL RUNNING CASING UPON HES ARRIVAL.
Pre-Rig Up Safety Meeting	03/26/2009 21:45							
Rig-Up Equipment	03/26/2009 22:00							
Rig-Up Completed	03/26/2009 22:50							
Pre-Job Safety Meeting	03/26/2009 23:00							RIG CIRCULATED ON WELL 1 HR BEFORE STARTING CEMENT JOB
Start Job	03/26/2009 23:31							NO PIPE MOVEMENT DURING CEMENT JOB
Pressure Test	03/26/2009 23:32						3000.0	
Pump Spacer 1	03/26/2009 23:33		4	30			92.0	H2O
Pump Spacer 2	03/26/2009 23:41		4	20			97.0	H2O SPACER WITH RED DYE AND POLYFLAKE. HES HAD FULL CIRCULATION ENTIRE JOB
Pump Lead Cement	03/26/2009 23:47		8	59.3			389.0	140 SKS AT 12.3 PPG, 2.38 FT3/SK, 13.75 GAL/SK
Pump Tail Cement	03/26/2009 23:55		8	58.2			320.0	155 SKS AT 12.8 PPG, 2.11 FT3/SK, 11.75 GAL/SK
Shutdown	03/27/2009 00:04							

Cementing Job Log

Activity Description	Date/Time	Cht #	Rate bbl/ min	Volume bbl		Pressure psig		Comments
				Stage	Total	Tubing	Casing	
Drop Top Plug	03/27/2009 00:05							
Pump Displacement	03/27/2009 00:06		8	63.2			224.0	DISPLACE WITH H2O
Bump Plug	03/27/2009 00:16		2	63.2			1275.0	HES RETURNED TO SURFACE 30 BBLs OF CEMENT
Check Floats	03/27/2009 00:19							FLOATS HELD
End Job	03/27/2009 00:20							
Pre-Rig Down Safety Meeting	03/27/2009 00:30							
Rig-Down Equipment	03/27/2009 00:45							
Rig-Down Completed	03/27/2009 02:00							
Depart Location for Service Center or Other Site	03/27/2009 02:30							
Other	03/27/2009 02:31							THANK YOU FOR USING HALLIBURTON GRAND JUNCTION

CHEVRON

8 5/8" SURFACE



Local Event Log

1	START JOB	3/26/2009 23:31:03	2	TEST LINES	3/26/2009 23:31:47	3	PUMP SPACER 1	3/26/2009 23:33:23
4	PUMP SPACER 2	3/26/2009 23:41:54	5	PUMP LEAD CEMENT	3/26/2009 23:47:00	6	PUMP TAIL CEMENT	3/26/2009 23:55:48
7	SHUTDOWN	3/27/2009 00:04:16	8	DROP PLUG	3/27/2009 00:04:56	9	PUMP DISPLACEMENT	3/27/2009 00:05:52
10	SLOW RATE	3/27/2009 00:12:32	11	BUMP PLUG	3/27/2009 00:16:34	12	CHECK FLOATS	3/27/2009 00:19:00
13	END JOB	3/27/2009 00:19:58						

Customer: CHEVRON	Job Date: 26-Mar-2009	Sales Order #: 6579206
Well Description: SKR698-09-AV-09	Job Type: SURFACE	ADC Used: YES
Company Rep: DAN MEIER	Cement Supervisor: JEREMY YOUNG	Elite #: 9