

---

# CHEVRON - MID-CONTINENT EBIZ

---

SKR 698-04-AV-15  
SKINNER RIDGE  
Garfield County , Colorado

**Cement Surface Casing**  
02-Jan-2009

**Job Site Documents**

The Road to Excellence Starts with Safety

Sold To #: 338668	Ship To #: 2695771	Quote #:	Sales Order #: 6420137
Customer: CHEVRON - MID-CONTINENT EBIZ		Customer Rep: MEIER, DAN	
Well Name: SKR	Well #: 698-04-AV-15	API/UWI #: 05-045-17218	
Field: SKINNER RIDGE	City (SAP): PARACHUTE	County/Parish: Garfield	State: Colorado
Lat: N 39.559 deg. OR N 39 deg. 33 min. 33.138 secs.		Long: W 108.338 deg. OR W -109 deg. 39 min. 41.864 secs.	
Contractor: H&P 318	Rig/Platform Name/Num: H&P 318		
Job Purpose: Cement Surface Casing			
Well Type: Development Well		Job Type: Cement Surface Casing	
Sales Person: HARTLEY, RICHARD	Srvc Supervisor: DEROSA, JAY	MBU ID Emp #: 338788	

### Job Personnel

HES Emp Name	Exp Hrs	Emp #	HES Emp Name	Exp Hrs	Emp #	HES Emp Name	Exp Hrs	Emp #
BETZ, KEITH A		442854	BETZ, KLAYTON Alan		446140	DEROSA, JAY M		338788
RAYA, MIKE T		373406						

### Equipment

HES Unit #	Distance-1 way	HES Unit #	Distance-1 way	HES Unit #	Distance-1 way	HES Unit #	Distance-1 way
10616651C	120 mile	10829466	120 mile	10867423	120 mile		

### Job Hours

Date	On Location Hours	Operating Hours	Date	On Location Hours	Operating Hours	Date	On Location Hours	Operating Hours
1-2-09	4	1						

TOTAL Total is the sum of each column separately

### Job

### Job Times

Formation Name	Formation Depth (MD)	Top	Bottom	Called Out	Date	Time	Time Zone
Form Type	Job depth MD	1045. ft	Job Depth TVD	1045. ft	Job Started	02 - Jan - 2009	15:55
Water Depth	Perforation Depth (MD)	From	To	Job Completed	02 - Jan - 2009	16:40	MST
				Departed Loc	02 - Jan - 2009	19:00	MST

### Well Data

Description	New / Used	Max pressure psig	Size in	ID in	Weight lbf/ft	Thread	Grade	Top MD ft	Bottom MD ft	Top TVD ft	Bottom TVD ft
<b>Sales/Rental/3<sup>rd</sup> Party (HES)</b>											

### Description

Description	Qty	Qty uom	Depth	Supplier
PLUG,CMTG, TOP, 8 5/8, HW, 7.20 MIN/8.09 MA	1	EA		

### Tools and Accessories

Type	Size	Qty	Make	Depth	Type	Size	Qty	Make	Depth	Type	Size	Qty	Make
Guide Shoe					Packer					Top Plug	8 5/8	1	
Float Shoe					Bridge Plug					Bottom Plug			
Float Collar					Retainer					SSR plug set			
Insert Float										Plug Container	8 5/8	1	
Stage Tool										Centralizers			

### Miscellaneous Materials

Gelling Agt	Conc	Surfactant	Conc	Acid Type	Qty	Conc %
Treatment Fid	Conc	Inhibitor	Conc	Sand Type	Size	Qty

### Fluid Data

Stage/Plug #: 1										
Fluid #	Stage Type	Fluid Name	Qty	Qty uom	Mixing Density lbf/gal	Yield ft <sup>3</sup> /sk	Mix Fluid Gal/sk	Rate bbl/min	Total Mix Fluid Gal/sk	

Stage/Plug #: 1									
Fluid #	Stage Type	Fluid Name	Qty	Qty uom	Mixing Density lbm/gal	Yield ft <sup>3</sup> /sk	Mix Fluid Gal/sk	Rate bbl/min	Total Mix Fluid Gal/sk
1	POLYFLAKE Spacer		50	bbl	8.33	.0	.0	.0	
2	Lead Cement	VERSACEM (TM) SYSTEM (452010)	155	sacks	12.3	2.38	13.75		13.75
3	Tail Cement	VERSACEM (TM) SYSTEM (452010)	160	sacks	12.8	2.11	11.75		11.75
4	H2O DISPLACEMENT		62.7	bbl	8.33	.0	.0	.0	
Calculated Values		Pressures		Volumes					
Displacement	62.7	Shut In: Instant		Lost Returns	no	Cement Slurry	125.8	Pad	
Top Of Cement	Surface	5 Min		Cement Returns	20bbls	Actual Displacement	62.7	Treatment	
Frac Gradient		15 Min		Spacers	50bbls	Load and Breakdown		Total Job	
Rates									
Circulating Rig		Mixing	7	Displacement	10	Avg. Job			
Cement Left In Pipe	Amount	48.2ft	Reason	Shoe Joint					
Frac Ring # 1 @	ID	Frac ring # 2 @	ID	Frac Ring # 3 @	ID	Frac Ring # 4 @	ID		
The Information Stated Herein Is Correct				Customer Representative Signature					

*The Road to Excellence Starts with Safety*

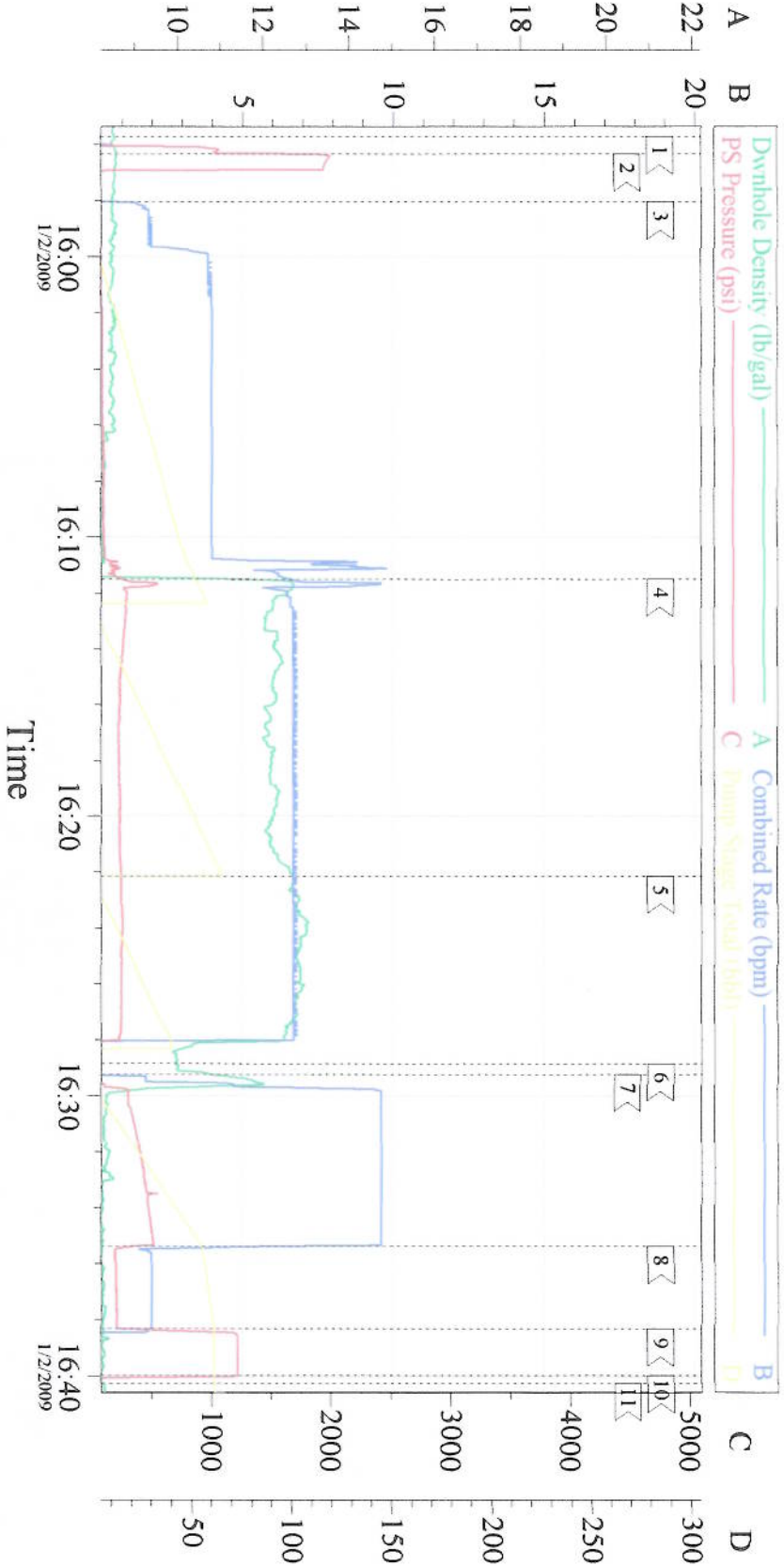
Sold To #: 338668	Ship To #: 2695771	Quote #:	Sales Order #: 6420137
Customer: CHEVRON - MID-CONTINENT EBIZ		Customer Rep: MEIER, DAN	
Well Name: SKR	Well #: 698-04-AV-15	API/UWI #: 05-045-17218	
Field: SKINNER RIDGE	City (SAP): PARACHUTE	County/Parish: Garfield	State: Colorado
Legal Description:			
Lat: N 39.559 deg. OR N 39 deg. 33 min. 33.138 secs.		Long: W 108.338 deg. OR W -109 deg. 39 min. 41.864 secs.	
Contractor: H&P 318	Rig/Platform Name/Num: H&P 318		
Job Purpose: Cement Surface Casing			Ticket Amount:
Well Type: Development Well		Job Type: Cement Surface Casing	
Sales Person: HARTLEY, RICHARD	Srvc Supervisor: DEROSA, JAY	MBU ID Emp #: 338788	

Activity Description	Date/Time	Cht #	Rate bbl/min	Volume bbl		Pressure psig		Comments
				Stage	Total	Tubing	Casing	
Call Out	01/02/2009 08:30							
Pre-Convoy Safety Meeting	01/02/2009 08:30							
Arrive At Loc	01/02/2009 12:30							
Pre-Rig Up Safety Meeting	01/02/2009 12:45							
Rig-Up Equipment	01/02/2009 13:00							
Wait on Customer or Customer Sub-Contractor Equip	01/02/2009 13:30							Rig running casig
Wait on Customer or Customer Sub-Contractor Equipm	01/02/2009 15:30							
Pre-Job Safety Meeting	01/02/2009 15:30							
Start Job	01/02/2009 15:55	1						
Test Lines	01/02/2009 15:56	2					2000.0	
Pump Spacer	01/02/2009 15:58	3	2	50			60.0	H2O Spacer with Poly-E-Flake Red Dye was not used per Co Rep.
Pump Lead Cement	01/02/2009 16:11	4	7	65.7			245.0	155 sks @ 12.3 ppg 2.38 ft3/sk 13.75 gal/sk
Pump Tail Cement	01/02/2009 16:22	5	7	60.1			250.0	160 sks @ 12.8 ppg 2.11 ft3/sk 11.75 gal/sk
Drop Top Plug	01/02/2009 16:28	6						
Pump Displacement	01/02/2009 16:29	7	10				307.0	Fresh water
Slow Rate	01/02/2009 16:35	8	2	55			200.0	

Activity Description	Date/Time	Cht #	Rate bbl/min	Volume bbl		Pressure psig		Comments
				Stage	Total	Tubing	Casing	
Bump Plug	01/02/2009 16:38	9	2	62.7			1221.0	Bump plug
Check Floats	01/02/2009 16:39	10						Floats held. Good returns throughout entire job. Pipe was not reciprocated during job. 20 bbls cement to surface.
End Job	01/02/2009 16:40	11						Thanks for using Halliburton, Jay DeRosa and crew.
Post-Job Safety Meeting (Pre Rig-Down)	01/02/2009 16:55							
Rig-Down Equipment	01/02/2009 17:00							
Pre-Convoy Safety Meeting	01/02/2009 19:00							
Depart Location for Service Center or Other Site	01/02/2009 19:00							

Signature \_\_\_\_\_

# 8 5/8 SURFACE



Event Log

1	Start Job	15:55:43	2	Test Lines	15:56:20	3	Pump H2O Spacer	15:58:02
4	Pump Lead Cement	16:11:30	5	Pump Tail Cement	16:22:08	6	Drop Top Plug	16:28:51
7	Pump Displacement	16:29:14	8	Slow Rate	16:35:22	9	Bump Plug	16:38:18
10	Check Floats	16:39:57	11	End Job	16:40:14			

Customer:	Chevron	Job Date:	1-2-09	Ticket #:	6420137
Well Description:	8 5/8 Surface	CEMENTER:	Jay DeRosa	ADC USED:	YES
LEASE:	SKR	Well #	698-04-AV-15	CO REP:	Dan Meier
		Truck:	Elite 4	Oper:	Klayton Beitz