
CHEVRON - MID-CONTINENT EBIZ

**SKR 698-04-AV-12
PICEANCE
Garfield County , Colorado**

Cement Production Casing **02-Feb-2009**

Job Site Documents

The Road to Excellence Starts with Safety

Sold To #: 338668		Ship To #: 2695767		Quote #:		Sales Order #: 6480301	
Customer: CHEVRON - MID-CONTINENT EBIZ				Customer Rep: MEIER, DAN			
Well Name: SKR		Well #: 698-04-AV-12		API/UWI #:			
Field: PICEANCE		City (SAP): PARACHUTE		County/Parish: Garfield		State: Colorado	
Contractor: H&P 318		Rig/Platform Name/Num: H&P 318					
Job Purpose: Cement Production Casing							
Well Type: Development Well				Job Type: Cement Production Casing			
Sales Person: HARTLEY, RICHARD		Srvc Supervisor: DANIEL, EVERETT		MBU ID Emp #: 337325			
Job Personnel							
HES Emp Name		Exp Hrs	Emp #	HES Emp Name		Exp Hrs	Emp #
ARNOLD, EDWARD John		5.75	439784	CLARKE, GERALD C		5.75	441763
HOEFER, FREEMAN Dennis		5.75	369666	WILKE, ANDREW J		5.75	398822
DANIEL, EVERETT Dean		5.75	337325				
Equipment							
HES Unit #	Distance-1 way	HES Unit #	Distance-1 way	HES Unit #	Distance-1 way	HES Unit #	Distance-1 way
10296148C	60 mile	10533645	60 mile	10592964	60 mile	10951246	60 mile
10988978	60 mile	11057896	60 mile	6334	60 mile		
Job Hours							
Date	On Location Hours	Operating Hours	Date	On Location Hours	Operating Hours	Date	On Location Hours
2/2/09	5.75	3.5					
TOTAL		5.75	3.5	Total is the sum of each column separately			
Job				Job Times			
Formation Name				Date			
Formation Depth (MD) Top				Time			
Bottom				Time Zone			
Form Type				Called Out			
BHST				02 - Feb - 2009			
Job depth MD				On Location			
6099. ft				02 - Feb - 2009			
Job Depth TVD				Job Started			
6099. ft				02 - Feb - 2009			
Water Depth				Job Completed			
Wk Ht Above Floor				02 - Feb - 2009			
5. ft				Job Completed			
Perforation Depth (MD) From				Departed Loc			
To				02 - Feb - 2009			
				23:45			
				MST			
Well Data							
Description	New / Used	Max pressure psig	Size in	ID in	Weight lbm/ft	Thread	Grade
							Top MD ft
							Bottom MD ft
							Top TVD ft
							Bottom TVD ft
Sales/Rental/3rd Party (HES)							
Description				Qty	Qty uom	Depth	Supplier
PLUG,CMTG,TOP,4 1/2,HWE,3.65 MIN/4.14 MA				1	EA		
Tools and Accessories							
Type	Size	Qty	Make	Depth	Type	Size	Qty
Guide Shoe					Packer		
Float Shoe					Bridge Plug		
Float Collar					Retainer		
Insert Float							
Stage Tool							
Miscellaneous Materials							
Gelling Agt		Conc		Surfactant		Conc	
Treatment Fld		Conc		Inhibitor		Conc	
				Acid Type		Qty	
				Sand Type		Size	
						Conc	%
						Qty	

HALLIBURTON

Cementing Job Summary

Fluid Data									
Stage/Plug #: 1									
Fluid #	Stage Type	Fluid Name	Qty	Qty uom	Mixing Density lbm/gal	Yield ft ³ /sk	Mix Fluid Gal/sk	Rate bbl/min	Total Mix Fluid Gal/sk
1	Dyed Spacer		40	bbl	8.33	.0	.0	.0	
2	Lead Cement	VARICEM (TM) CEMENT (452009)	305	sacks	12.8	1.6	7.31		
3	Tail Cement	VARICEM (TM) CEMENT (452009)	610	sacks	13.2	1.47	6.32		
4	KCL Displacement		93.3	bbl	.	.0	.0	.0	
Calculated Values		Pressures		Volumes					
Displacement	93.3	Shut In: Instant		Lost Returns		Cement Slurry	246.6	Pad	
Top Of Cement	88	5 Min		Cement Returns		Actual Displacement	93.3	Treatment	
Frac Gradient		15 Min		Spacers	40	Load and Breakdown		Total Job	
Rates									
Circulating	6	Mixing	6.5	Displacement	8	Avg. Job	7		
Cement Left In Pipe	Amount 48 ft	Reason	Shoe Joint						
Frac Ring # 1 @	ID	Frac ring # 2 @	ID	Frac Ring # 3 @	ID	Frac Ring # 4 @	ID		
The Information Stated Herein Is Correct				Customer Representative Signature					

The Road to Excellence Starts with Safety

Sold To #: 338668	Ship To #: 2695767	Quote #:	Sales Order #: 6480301
Customer: CHEVRON - MID-CONTINENT EBIZ	Customer Rep: MEIER, DAN		
Well Name: SKR	Well #: 698-04-AV-12	API/UWI #:	
Field: PICEANCE	City (SAP): PARACHUTE	County/Parish: Garfield	State: Colorado
Legal Description:			
Lat: N 0 deg. OR N 0 deg. 0 min. 0 secs.	Long: E 0 deg. OR E 0 deg. 0 min. 0 secs.		
Contractor: H&P 318	Rig/Platform Name/Num: H&P 318		
Job Purpose: Cement Production Casing	Ticket Amount:		
Well Type: Development Well	Job Type: Cement Production Casing		
Sales Person: HARTLEY, RICHARD	Srvc Supervisor: DANIEL, EVERETT	MBU ID Emp #: 337325	

Activity Description	Date/Time	Cht #	Rate bbl/ min	Volume bbl		Pressure psig		Comments
				Stage	Total	Tubing	Casing	
Call Out	02/02/2009 14:20							
Depart Yard Safety Meeting	02/02/2009 16:30							Discussed driving conditions, possible hazards, convoy order and safety concerns.
Depart from Service Center or Other Site	02/02/2009 16:45							Checked out HES pump (Elite 1)-660- Iron Trailer
Arrive at Location from Service Center	02/02/2009 18:00							Crew arrived on location on time
Assessment Of Location Safety Meeting	02/02/2009 18:05							
Comment	02/02/2009 18:15							Consult with Co. Rep. Verified calculations and materials on location including H2O and Cement totals
Safety Meeting - Pre Rig-Up	02/02/2009 18:30							
Rig-Up Equipment	02/02/2009 18:40							Iron to Rig, Iron to pit, 660, Silo, Two Water Lines
Rig-Up Completed	02/02/2009 19:45							
Safety Meeting - Pre Job	02/02/2009 20:45							Discussed job procedures and safety issues
Start Job	02/02/2009 20:57							
Prime Pumps	02/02/2009 20:57		2	2			190.0	Fresh Water
Test Lines	02/02/2009 21:00		0.5	0.1			5100.0	Fresh Water
Pump Spacer 1	02/02/2009 21:02		6	40			660.0	Polyflake H2O Spacer

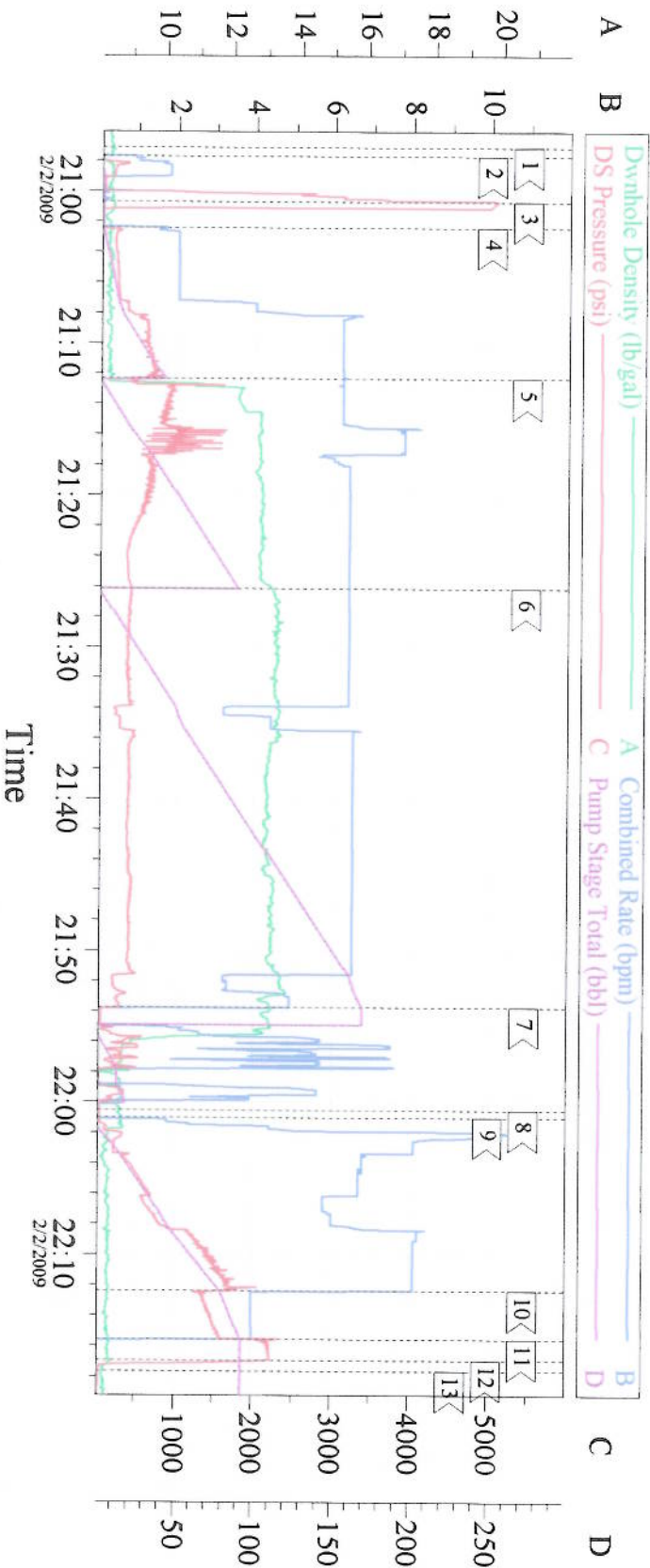
Cementing Job Log

Activity Description	Date/Time	Cht #	Rate bbl/ min	Volume bbl		Pressure psig		Comments
				Stage	Total	Tubing	Casing	
Pump Lead Cement	02/02/2009 21:12		6.5	86.9			1024.0	305 sks of VARICEM @ 12.8# - 1.60 yield - 7.31 H2O requirement
Shutdown	02/02/2009 21:15							
Pump Tail Cement	02/02/2009 21:19		6.5	159.7			432.0	610 sks of VARICEM@ 13.2# - 1.47 yield - 6.32 H2O requirement
Clean Lines	02/02/2009 21:53							
Drop Top Plug	02/02/2009 22:00							Co. Rep. verified plug leaving container.
Pump Displacement	02/02/2009 22:01		8	93.3			1760.0	2 percent KCL Water
Slow Rate	02/02/2009 22:12		4	83			1400.0	
Bump Plug	02/02/2009 22:15		4	93.3			1540.0	Bumped plug @ 700 psi over
Check Floats	02/02/2009 22:16						2230.0	Floats Held
End Job	02/02/2009 22:17							
Safety Meeting - Pre Rig-Down	02/02/2009 22:20							Discussed job procedures and safety issues
Rig-Down Equipment	02/02/2009 22:30							
Rig-Down Completed	02/02/2009 23:30							
Safety Meeting - Departing Location	02/02/2009 23:35							Discussed driving conditions, possible hazards, convoy order and safety concerns.
Depart Location for Service Center or Other Site	02/02/2009 23:45							

Total Depth = 6099 , Total Casing = 6066 , Shoe Joint =48 , Mud Weight =10.2# . Casing remained stationary throughout job and was chained down.278 bbls of H2O were used for the job and 40 bbls were used for clean up (before dropping plug and after the job) The plug landed at calculated displacement and the floats held.

Thank you for using Grand Junction Halliburton Dean Daniel & Crew

4 1/2 LONG STRING H&P 318



1 <	Start Job	20:57:09	2 <	Prime Lines	20:57:44	3 <	Test Lines	21:00:43
4 <	Pump Spacer 1	21:02:26	5 <	Pump Lead Cement	21:12:21	6 <	Pump Tail Cement	21:26:08
7 <	Shut Down/Clean Lines	21:53:44	8 <	Drop Top Plug	22:00:32	9 <	Pump Displacement	22:01:01
10 <	Slow Rate	22:12:22	11 <	Bump Plug	22:15:33	12 <	Check Floats	22:16:55
13 <	End Job	22:17:38						

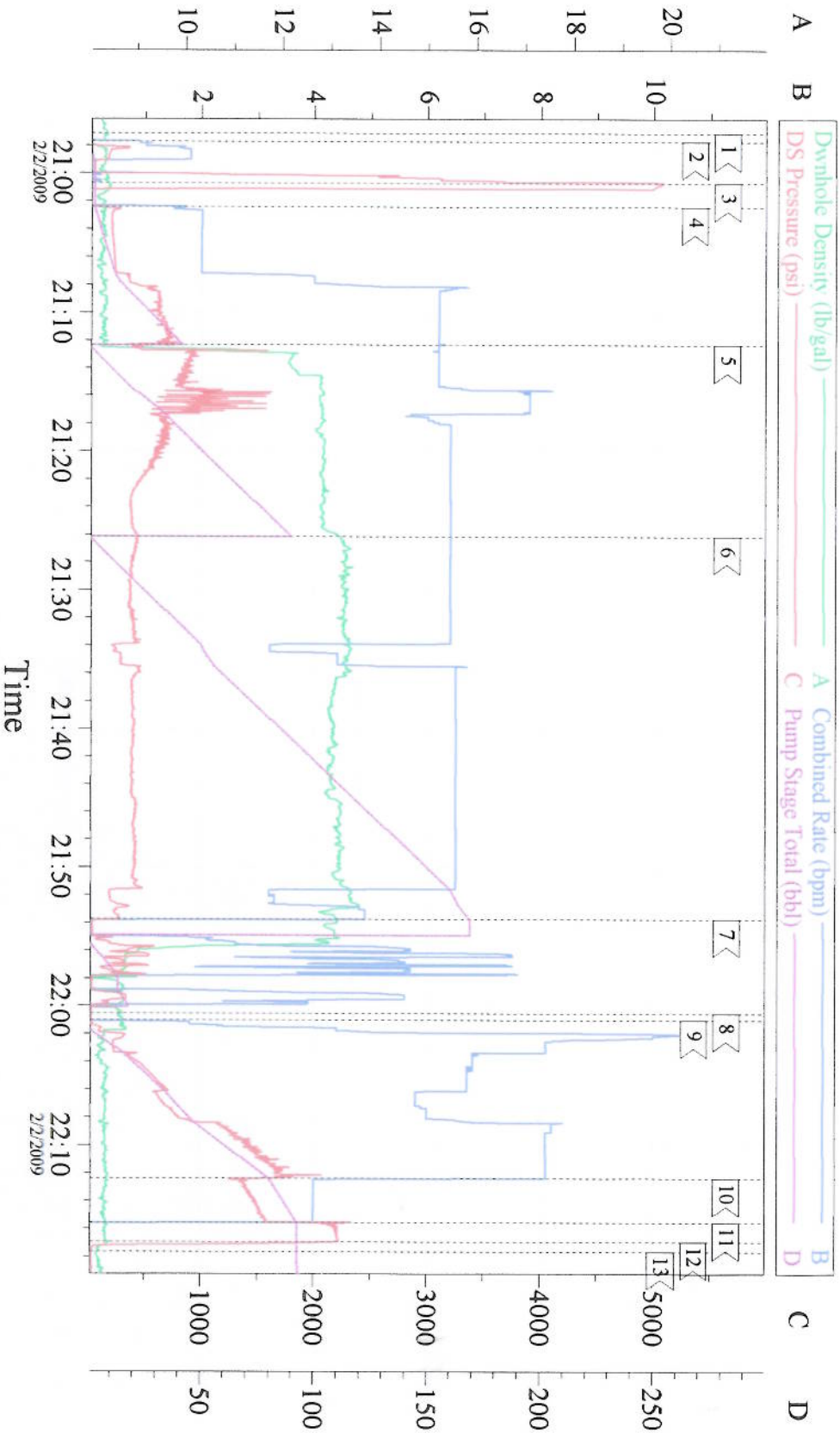
Customer: Chevron
Well Number: SKR 698-04-AV-12
Supervisor: Dean Daniel

Job Date: 2/2/2009
Co. Rep: Elmer Tatum
HES Unit: Elite 1

Ticket #: 6480301
ADC Used: YES
Operator: Dennis Hoefer

CemWin v1.7.2
02-Feb-09 22:36

4 1/2 LONG STRING H&P 318



Customer: Chevron
Well Number: SKR 698-04-AV-12
Supervisor: Dean Daniel

Job Date: 2/2/2009
Co. Rep: Elmer Tatum
HES Unit: Elite 1

Ticket #: 6480301
ADC Used: YES
Operator: Dennis Hoefler

CemWin v1.7.2
02-Feb-09 22:37