

API Well No.:
SKR 698-04-AV-09

Customer Representative:
CHAD KAVANDER
Halliburton Operator:
KERRY KING
Ticket No.:
6344559

HALLIBURTON

The Road to Excellence Starts with Safety

Sold To #: 338668	Ship To #: 2695763	Quote #:	Sales Order #: 6344559
Customer: CHEVRON - MID-CONTINENT EBIZ	Customer Rep: CHAD KAVANDER		
Well Name: SKR	Well #: 698-04-AV-09	API/UWI #:	
Field: SKINNER RIDGE	City (SAP): PARACHUTE	County/Parish: Garfield	State: Colorado
Contractor: CHEVRON	Rig/Platform Name/Num: H&P 318		
Job Purpose: Cement Production Casing			
Well Type: Development Well	Job Type: Cement Production Casing		
Sales Person: DUNNING, DUSTIN	Srv Supervisor: KING, KERRY	MBU ID Emp #: 342363	

Job Personnel

HES Emp Name	Exp Hrs	Emp #	HES Emp Name	Exp Hrs	Emp #	HES Emp Name	Exp Hrs	Emp #
KING, KERRY Sherman		342363	MILLER, KEVIN Paul		443040	SMITH, CHRISTOPHER Scott		452619
WORTHAM-COLLINS, JOSHUA Ross		452648	YOUNG, JEREMY R		418013			

Equipment

HES Unit #	Distance-1 way	HES Unit #	Distance-1 way	HES Unit #	Distance-1 way	HES Unit #	Distance-1 way
10025121	120 mile	10243540C	120 mile	10001796	120 mile	10829464	120 mile
10988964	120 mile	11057896	120 mile	6334	120 mile		

Job Hours

Date	On Location Hours	Operating Hours	Date	On Location Hours	Operating Hours	Date	On Location Hours	Operating Hours
12-20-08	8	5	12-21-08	3.5	3.5			
TOTAL								

Total is the sum of each column separately

Job

Formation Name	Formation Depth (MD)	Top	Bottom	Form Type	Job depth MD	Job Depth TVD	Wk Ht Above Floor	Perforation Depth (MD)	From	To
				BHST	7557. ft	7557. ft	4. ft			

Job Times

Date	Time	Time Zone
20 - Dec - 2008	00:00	MST
20 - Dec - 2008	11:45	MST
21 - Dec - 2008	00:30	MST
21 - Dec - 2008	01:58	MST
21 - Dec - 2008	03:15	MST

Well Data

Description	New / Used	Max pressure psig	Size in	ID in	Weight lbm/ft	Thread	Grade	Top MD ft	Bottom MD ft	Top TVD ft	Bottom TVD ft

Sales/Rental/3rd Party (HES)

Description	Qty	Qty uom	Depth	Supplier
PLUG,CMTG,TOP,4 1/2,HWE,3.65 MIN/4.14 MA	1	EA		

Tools and Accessories

Type	Size	Qty	Make	Depth	Type	Size	Qty	Make	Depth	Type	Size	Qty	Make
Guide Shoe					Packer					Top Plug	4.5	1	HES
Float Shoe					Bridge Plug					Bottom Plug			
Float Collar					Retainer					SSR plug set			
Insert Float										Plug Container	4.5	1	HES
Stage Tool										Centralizers	4.5	50	???

Miscellaneous Materials

Gelling Agt	Conc	Surfactant	Conc	Acid Type	Qty	Conc	%
Treatment Fld	Conc	Inhibitor	Conc	Sand Type	Size	Qty	

Fluid Data									
Stage/Plug #: 1									
Fluid #	Stage Type	Fluid Name	Qty	Qty uom	Mixing Density lbm/gal	Yield ft ³ /sk	Mix Fluid Gal/sk	Rate bbl/min	Total Mix Fluid Gal/sk
1	Dyed Polyflake Spacer	FRESH WATER	40	bbl	8.33	.0	.0	.0	
2	Lead Cement	VARICEM (TM) CEMENT (452009)	310	sacks	12.8	1.55	7.15		7.67
	7.674 Gal	FRESH WATER							
3	Tail Cement	VARICEM (TM) CEMENT (452009)	915	sacks	13.2	1.43	6.19		7.0
4	KCL DISPLACEMENT		117	bbl	8.4	.0	.0	.0	
Calculated Values		Pressures		Volumes					
Displacement		Shut In: Instant		Lost Returns		Cement Slurry		Pad	
Top Of Cement		5 Min		Cement Returns		Actual Displacement		Treatment	
Frac Gradient		15 Min		Spacers		Load and Breakdown		Total Job	
Rates									
Circulating		Mixing		Displacement		Avg. Job			
Cement Left In Pipe		Amount	48 ft	Reason	Shoe Joint				
Frac Ring # 1 @	ID	Frac ring # 2 @	ID	Frac Ring # 3 @	ID	Frac Ring # 4 @	ID		
The Information Stated Herein Is Correct				Customer Representative Signature					

Cementing Job Log

The Road to Excellence Starts with Safety

Sold To #: 338668	Ship To #: 2695763	Quote #:	Sales Order #: 6344559
Customer: CHEVRON - MID-CONTINENT EBIZ	Customer Rep: CHAD KAVANDER		
Well Name: SKR	Well #: 698-04-AV-09	API/UWI #:	
Field: SKINNER RIDGE	City (SAP): PARACHUTE	County/Parish: Garfield	State: Colorado
Legal Description:			
Lat:		Long:	
Contractor: CHEVRON	Rig/Platform Name/Num: H&P 318		
Job Purpose: Cement Production Casing	Ticket Amount:		
Well Type: Development Well	Job Type: Cement Production Casing		
Sales Person: DUNNING, DUSTIN	Srv Supervisor: KING, KERRY	MBU ID Emp #: 342363	

Activity Description	Date/Time	Cht #	Rate bbl/min	Volume bbl		Pressure psig		Comments
				Stage	Total	Tubing	Casing	
Arrive at Location from Service Center	12/20/2008 11:45							CREW WAS 2 HRS EARLY TO LOCATION. LEFT YARD WITH EXTRA TIME DUE TO BAD ROAD CONDITIONS. RIG WAS RUNNING CASING WHEN CREW ARRIVED TO LOCATION.
Assessment Of Location Safety Meeting	12/20/2008 12:00							TP 7557, TD 7585, 48FT SHOE JOINT. 4 1/2" 11.6 #/FT CASING. 7 7/8" HOLE. 50 CENTRALIZERS USED ON CASING STRING. 10.2PPG MUD WIEGHT.
Start Job	12/21/2008 00:30							SPIILL CONTAINMENT BARRIERS BROUGHT TO LOCATION AND DEPLOYED UNDER PUMP TRUCK. IRON TRAILER USED ON JOB ALSO.
Test Lines	12/21/2008 00:32						6000. 0	WHEN LINES WERE FILLED PRIOR TO PRESSURE TESTING, THE PLUG CONTIANER WAS LEAKING. ANOTHER HEAD WAS BROUGHT OUT. IT LEAKED ALSO. RIG HANDS PUT ON ANOTHER CASING COLLAR.

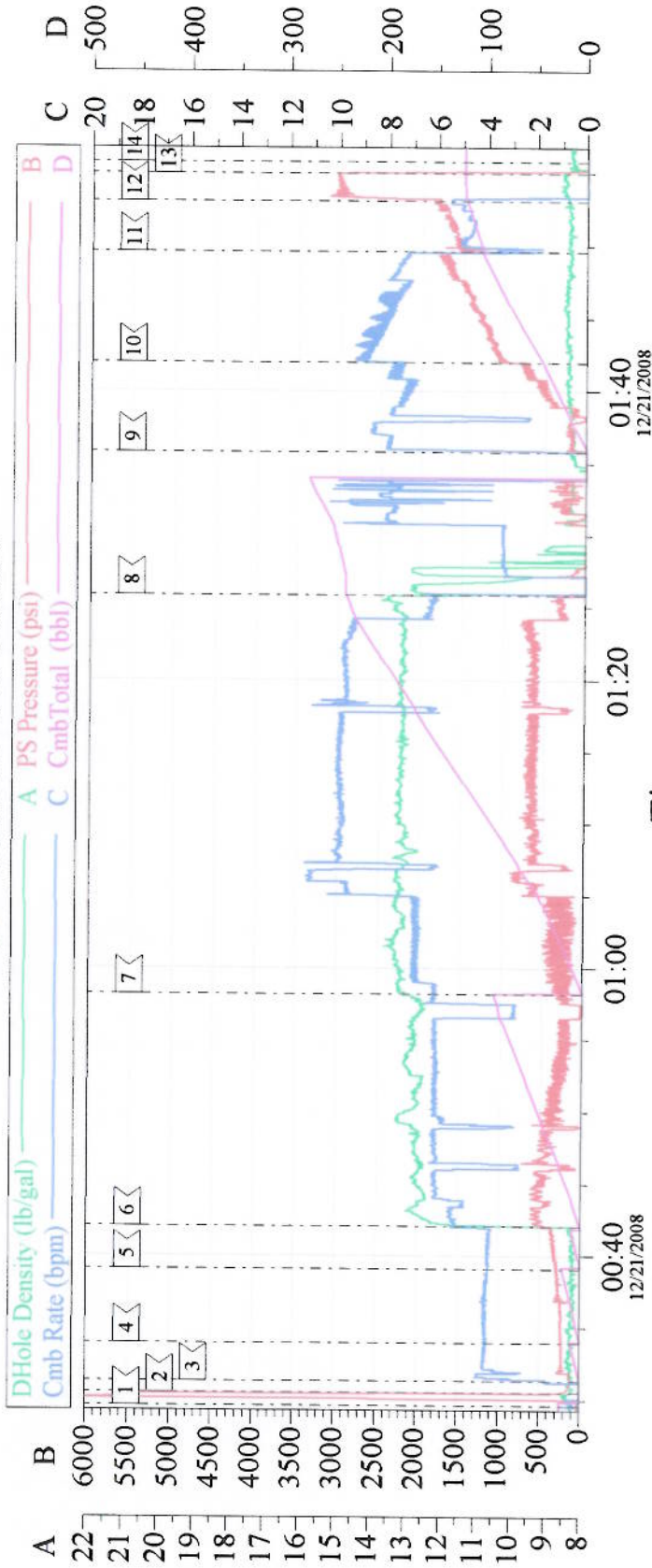
Cementing Job Log

Activity Description	Date/Time	Cht #	Rate bbl/min	Volume bbl		Pressure psig		Comments
				Stage	Total	Tubing	Casing	
Pump Spacer	12/21/2008 00:33		4	40			150.0	THEN HEAD WAS TRIED AGAIN. STILL LEAKED. ANOTHER HEAD WAS BROUGHT OUT, THIS ONE LEAKED TOO. SWEDGE WAS INSTALLED INTO PIPE, WHEN WATER WAS PUMPED IT WAS DETERMINED THAT CASING COLLAR WASN'T TIGHT. FRESH WATER WITH RED DYE AND 10#S POLYFLAKE
Pump Lead Cement	12/21/2008 00:42		7	90			250.0	PLUG CONTAINER WAS REINSTALLED AND JOB WAS PUMPED. THE FIRST CASING COLLAR WAS VISIBLY DAMAGED, THE 2ND WASN'T TIGHT ENOUGH. HES HEADS WERE FULLY OPERATIONAL. 310 SKS @ 12.8PPG, 1.55 YLD, 7.15 GAL/SK
Pump Tail Cement	12/21/2008 00:58		10	240			700.0	915 SKS @ 13.2PPG, 1.43 YLD, 6.19 GAL/SK
Shutdown	12/21/2008 01:26							WASH PUMPS AND LINES TO PIT.
Drop Plug	12/21/2008 01:36							PLUG LAUNCHED
Pump Displacement	12/21/2008 01:36		10				1300.0	FRESH WATER WITH 75 LBS OF KCL PER 10 BBL TANK
Bump Plug	12/21/2008 01:55		4	117			3000.0	SLOW RATE 10 BBLS PRIOR TO REACHING CALCULATED DISPLACEMENT. PRESSURED 1000PSI OVER LANDING PSI AT CHEVRONS DIRECTION.
Check Floats	12/21/2008 01:57							FLOAT HOLDING. GOOD RETURNS DURING JOB

Cementing Job Log

Activity Description	Date/Time	Cht #	Rate bbl/ min	Volume bbl		Pressure psig		Comments
				Stage	Total	Tubing	Casing	
End Job	12/21/2008 01:58							THANK YOU, KERRY KING AND CREW.
Pre-Job Safety Meeting	12/21/2008 23:45							WELL WAS CIRCULATED FOR 7 HR PRIOR TO CEMENTING. PIPE WAS NOT RECIPROCATED DURING CIRCULATION OR CEMENTING.

4 1/2" PRODUCTION



Event Log					
1	START JOB	00:29:36	2	TEST LINES	00:30:31
3	PUMP SPACER 1	00:31:17	4	PUMP POLYFLAKE SPACER	00:33:56
5	PUMP SPACE 2	00:39:04	6	LEAD CEMENT	00:42:04
7	TAIL CEMENT	00:58:09	8	SHUT DOWN, WASH LINES	01:25:52
9	DROP PLUG, START DISPLACEMENT	01:35:47	10	INCREASE RATE	01:41:56
11	SLOW RATE	01:49:33	12	BUMP PLUG	01:53:04
13	CHECK FLOAT	01:54:56	14	END JOB	01:55:43

Customer: CHEVRON		Job Date: 12-21-08		Ticket #: 6344559	
Operator: KEVIN MILLER		Cementer: KERRY KING		ADC YES/NO NO	
Pump Truck: TC-4 #2		Well/Lease: SKR 698-04-AV-09		CO REP: CHAD KAVANDER	