
CHEVRON - MID-CONTINENT EBIZ

**SKR 698-04-AV-08
SKINNER RIDGE
Garfield County , Colorado**

Cement Production Casing
29-Jan-2009

Job Site Documents

HALLIBURTON

Cementing Job Summary

The Road to Excellence Starts with Safety

Sold To #: 338668		Ship To #: 338668		Quote #:		Sales Order #: 6470378	
Customer: CHEVRON - MID-CONTINENT EBIZ				Customer Rep: JUNG, KYLE			
Well Name: SKR				Well #: 698-04-AV-08		API/UWI #: 05-045-17212	
Field: SKINNER RIDGE		City (SAP): PARACHUTE		County/Parish: Garfield		State: Colorado	
Lat: N 39.559 deg. OR N 39 deg. 33 min. 33.383 secs.				Long: W 108.338 deg. OR W -109 deg. 39 min. 41.612 secs.			
Contractor: H&P 318		Rig/Platform Name/Num: H&P 318					
Job Purpose: Cement Production Casing							
Well Type: Development Well				Job Type: Cement Production Casing			
Sales Person: HARTLEY, RICHARD				Srv Supervisor: WYLEY, KEVIN		MBU ID Emp #: 339437	
Job Personnel							
HES Emp Name		Exp Hrs	Emp #	HES Emp Name		Exp Hrs	Emp #
ARNOLD, EDWARD John		5	439784	HANSEN, TED Lance		5	396847
WYLEY, KEVIN Todd		5	339437				
				LESLIE, MICHAEL D		5	320605
Equipment							
HES Unit #	Distance-1 way	HES Unit #	Distance-1 way	HES Unit #	Distance-1 way	HES Unit #	Distance-1 way
10001431	120 mile	10264848	120 mile	10296152C	120 mile	10829461	120 mile
10897797	120 mile	6334	120 mile				
Job Hours							
Date	On Location Hours	Operating Hours	Date	On Location Hours	Operating Hours	Date	On Location Hours
1/29/09	5	2					
TOTAL			Total is the sum of each column separately				
Job							
Formation Name				Job Times			
Formation Depth (MD)		Top	Bottom	Date		Time	Time Zone
Form Type		BHST		Called Out		28 - Jan - 2009	18:30
Job depth MD		6141. ft	Job Depth TVD	On Location		29 - Jan - 2009	00:00
Water Depth			Wk Ht Above Floor	Job Started		29 - Jan - 2009	03:17
Perforation Depth (MD)		From	To	Job Completed		29 - Jan - 2009	04:29
				Departed Loc		29 - Jan - 2009	07:00
Well Data							
Description	New / Used	Max pressure psig	Size in	ID in	Weight lbm/ft	Thread	Grade
							Top MD ft
							Bottom MD ft
							Top TVD ft
							Bottom TVD ft
Sales/Rental/3 rd Party (HES)							
Description				Qty	Qty uom	Depth	Supplier
PLUG,CMTG,TOP,4 1/2,HWE,3.65 MIN/4.14 MA				1	EA		
Tools and Accessories							
Type	Size	Qty	Make	Depth	Type	Size	Qty
Guide Shoe					Packer		
Float Shoe					Bridge Plug		
Float Collar					Retainer		
Insert Float							
Stage Tool							
Miscellaneous Materials							
Gelling Agt		Conc		Surfactant		Conc	
Treatment Fld		Conc		Inhibitor		Conc	
				Acid Type		Qty	Conc %
				Sand Type		Size	Qty

HALLIBURTON

Cementing Job Summary

Stage/Plug #: 1		Fluid Data							
Fluid #	Stage Type	Fluid Name	Qty	Qty uom	Mixing Density lbm/gal	Yield ft ³ /sk	Mix Fluid Gal/sk	Rate bbl/min	Total Mix Fluid Gal/sk
1	Dyed Spacer		40	bbl	8.33	.0	.0	5	
2	Lead Cement	VARICEM (TM) CEMENT (452009)	312	sacks	12.6	1.6	7.31	6	
3	Tail Cement	VARICEM (TM) CEMENT (452009)	610	sacks	13.2	1.47	6.32	8	
4	KCL Displacement		94.5	bbl	.	.0	.0	10	
Calculated Values		Pressures		Volumes					
Displacement	94.4	Shut In: Instant		Lost Returns	NO	Cement Slurry	248.6	Pad	
Top Of Cement		5 Min		Cement Returns	NO	Actual Displacement	94.5	Treatment	
Frac Gradient		15 Min		Spacers	40	Load and Breakdown		Total Job	
Rates									
Circulating RIG		Mixing	8	Displacement	10	Avg. Job	8		
Cement Left In Pipe	Amount	48 ft	Reason	Shoe Joint					
Frac Ring # 1 @	ID	Frac ring # 2 @	ID	Frac Ring # 3 @	ID	Frac Ring # 4 @	ID		
The Information Stated Herein Is Correct				Customer Representative Signature					

HALLIBURTON**Cementing Job Log***The Road to Excellence Starts with Safety*

Sold To #: 338668	Ship To #: 338668	Quote #:	Sales Order #: 6470378
Customer: CHEVRON - MID-CONTINENT EBIZ		Customer Rep: JUNG, KYLE	
Well Name: SKR	Well #: 698-04-AV-08	API/UWI #: 05-045-17212	
Field: SKINNER RIDGE	City (SAP): PARACHUTE	County/Parish: Garfield	State: Colorado
Legal Description:			
Lat: N 39.559 deg. OR N 39 deg. 33 min. 33.383 secs.		Long: W 108.338 deg. OR W -109 deg. 39 min. 41.612 secs.	
Contractor: H&P 318		Rig/Platform Name/Num: H&P 318	
Job Purpose: Cement Production Casing		Ticket Amount:	
Well Type: Development Well		Job Type: Cement Production Casing	
Sales Person: HARTLEY, RICHARD		Srv Supervisor: WYLEY, KEVIN	
		MBU ID Emp #: 339437	

Activity Description	Date/Time	Cht #	Rate bbl/ min	Volume bbl		Pressure psig		Comments
				Stage	Total	Tubing	Casing	
Call Out	01/28/2009 18:30							
Depart Yard Safety Meeting	01/28/2009 21:30							SAFETY MEETING INVOLVING THE ENTIRE CMT CREW
Arrive At Loc	01/29/2009 00:00							STILL RUNNING CASING
Rig-Up Equipment	01/29/2009 00:30							
Circulate Well	01/29/2009 02:17							RIG CIRCULATED FOR 40 MIN AT 100 STROKES
Pre-Job Safety Meeting	01/29/2009 03:00							SAFETY MEETING INVOLVING EVERYONE ON LOCATION, PASON READ THAT GAS WAS AT 200 UNITS
Assessment Of Location Safety Meeting	01/29/2009 03:15							ASSESSMENT OF THE LOCATION INVOLVING THE ENTIRE CMT CREW
Start Job	01/29/2009 03:17							TD 6165', TP 6141', SJ 48', 4 1/2" 11.6# N-80 CSG, 7 7/8" OH, 10.2 MW, SURFACE TO 1016, NO PIPE MOVEMENT DURING THE JOB
Other	01/29/2009 03:18		1	1			430.0	PRIME LINES WITH FRESH WATER
Test Lines	01/29/2009 03:21						5800. 0	PSI TEST GOOD

Sold To #: 338668

Ship To #: 338668

Quote #:

Sales Order #:

6470378

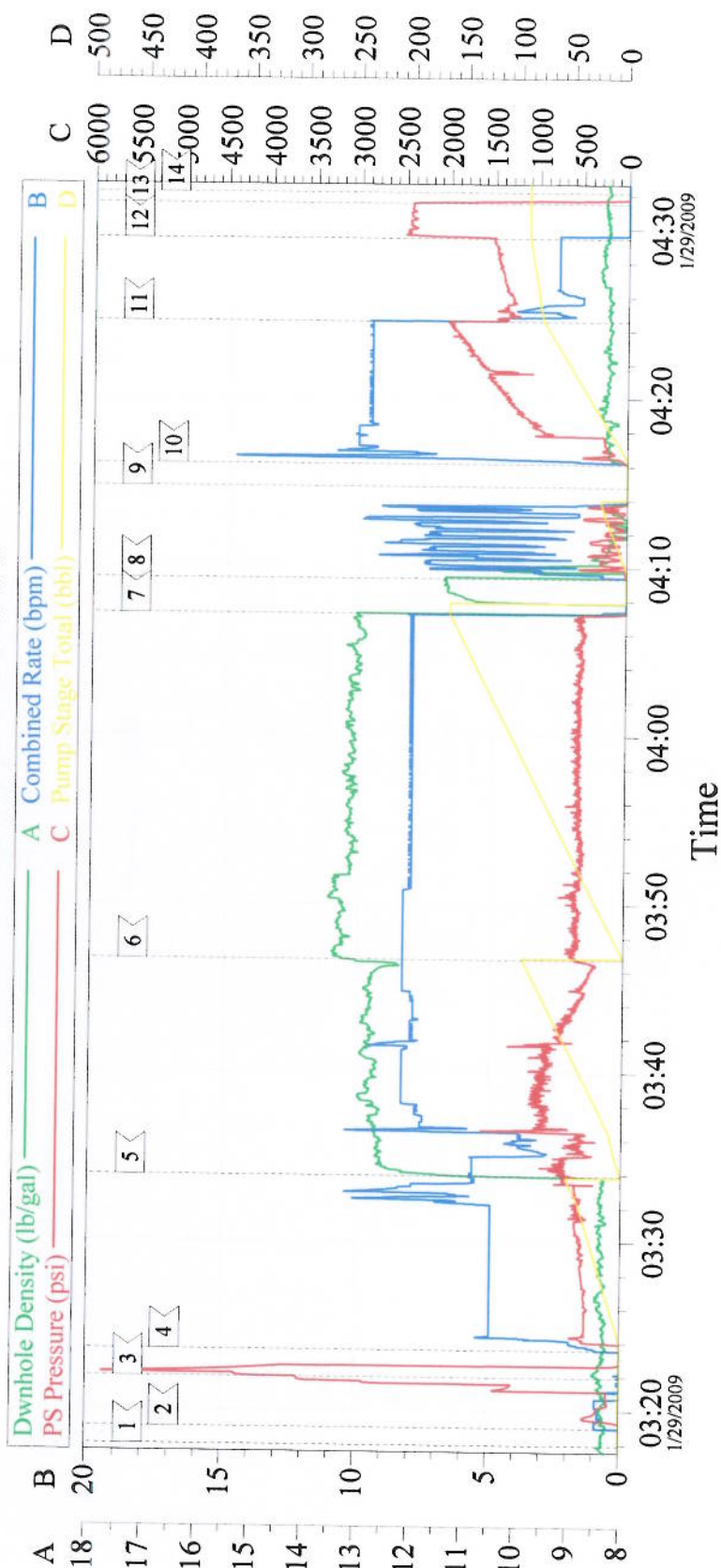
SUMMIT Version: 7.20.130

Thursday, January 29, 2009 05:34:00

Cementing Job Log

Activity Description	Date/Time	Cht #	Rate bbl/min	Volume bbl		Pressure psig		Comments
				Stage	Total	Tubing	Casing	
Pump Spacer	01/29/2009 03:23		8	48			900.0	FRESH WATER SPACER, THE LAST 20 W/ POL-E-FLAKE, NO DYE PER CO REP
Pump Lead Cement	01/29/2009 03:33		8	88.9			550.0	312 SKS, 12.8 PPG, 1.6 FT3/SK, 7.31 GAL/SK
Pump Tail Cement	01/29/2009 03:46		8	159.7			540.0	610 SKS, 13.2 PPG, 1.47 FT3/SK, 6.32 GAL/SK
Shutdown	01/29/2009 04:07							DROP TOP PLUG
Clean Lines	01/29/2009 04:09							CLEAN PUMPS AND LINES TO THE PIT PRIOR TO PUMPING ON THE PLUG
Drop Top Plug	01/29/2009 04:14							PLUG LEFT THE CONTAINER
Pump Displacement	01/29/2009 04:16		10	94.4			2400.0	1 1/2 BAGS OF KCL PER 10 BBLS OF DISPLACEMENT
Slow Rate	01/29/2009 04:24		3	84			1486.0	SLOW RATE THE LAST 10 BBLS OF DISPLACEMENT TO LAND THE PLUG
Bump Plug	01/29/2009 04:29		3	94.5			2550.0	PLUG LANDED
Check Floats	01/29/2009 04:31							FLOATS HELD
End Job	01/29/2009 04:32							GOOD CIRCULATION THROUGHOUT THE ENTIRE CMT JOB, NO FLOW UP THE BACK SIDE AFTER THE PLUG WAS LANDED
Pre-Rig Down Safety Meeting	01/29/2009 04:45							SAFETY MEETING INVOLVING THE ENTIRE CMT CREW
Rig-Down Equipment	01/29/2009 05:00							
Safety Meeting - Departing Location	01/29/2009 07:01							SAFETY MEETING INVOLVING THE ENTIRE CMT CREW
Comment	01/29/2009 07:02							THANK YOU FOR USING HALLIBURTON

4 1/2 PRODUCTION



Event Log

1	START JOB	03:17:56	2	PRIME LINES	03:18:59	3	TEST LINES	03:21:57
4	WATER SPACER	03:23:33	5	LEAD CEMENT	03:33:54	6	TAIL CEMENT	03:46:43
7	SHUTDOWN	04:07:14	8	CLEAN LINES	04:09:19	9	DROP TOP PLUG	04:14:46
10	DISPLACEMENT	04:16:08	11	SLOW RATE	04:24:33	12	LAND PLUG	04:29:26
13	CHECK FLOATS	04:31:31	14	END JOB	04:32:09			

Customer: CHEVRON	Job Date: 1/29/09	Ticket #: 6470378
Well Desc: SKR 698-04-AV-08	CO. REP: KYLE JUNG	SUPERVISOR: KEVIN WYLEY
ADC USED: YES	TRUCK #: ELITE 09	OPERATOR: TED HANSEN