
CHEVRON - MID-CONTINENT EBIZ

**SKR 698-04-AV-08
SKINNER RIDGE
Garfield County , Colorado**

Cement Surface Casing
13-Jan-2009

Job Site Documents

The Road to Excellence Starts with Safety

Sold To #: 338668		Ship To #: 2695762		Quote #:		Sales Order #: 6435529	
Customer: CHEVRON - MID-CONTINENT EBIZ				Customer Rep: Tatum, Elmer			
Well Name: SKR		Well #: 698-04-AV-08		API/UWI #: 05-045-17212			
Field: SKINNER RIDGE		City (SAP): PARACHUTE		County/Parish: Garfield		State: Colorado	
Lat: N 39.559 deg. OR N 39 deg. 33 min. 33.383 secs.				Long: W 108.338 deg. OR W -109 deg. 39 min. 41.612 secs.			
Contractor: CHEVRON		Rig/Platform Name/Num: H&P 318					
Job Purpose: Cement Surface Casing							
Well Type: Development Well				Job Type: Cement Surface Casing			
Sales Person: DUNNING, DUSTIN				Srv Supervisor: HOEFER, BRYAN		MBU ID Emp #: 415775	
Job Personnel							
HES Emp Name	Exp Hrs	Emp #	HES Emp Name	Exp Hrs	Emp #	HES Emp Name	Exp Hrs
BANKS, BRENT A	4.5	371353	HOEFER, BRYAN D	4.5	415775	LITTLE, FRANKLIN D	4.5
SCOTT, DALLAS D	4.5	334750					
Equipment							
HES Unit #	Distance-1 way	HES Unit #	Distance-1 way	HES Unit #	Distance-1 way	HES Unit #	Distance-1 way
10724333	120 mile	10822535	120 mile	10867322	120 mile	10871245	120 mile
10951250	120 mile	10998512	120 mile				
Job Hours							
Date	On Location Hours	Operating Hours	Date	On Location Hours	Operating Hours	Date	On Location Hours
1/13/2009	4.5	2					
TOTAL		4.5	2	Total is the sum of each column separately			
Job				Job Times			
Formation Name				Date			
Formation Depth (MD) Top				Bottom			
Form Type				BHST			
Job depth MD				1035. ft			
Water Depth				Wk Ht Above Floor			
Perforation Depth (MD) From				To			
Called Out				12 - Jan - 2009			
On Location				12 - Jan - 2009			
Job Started				12 - Jan - 2009			
Job Completed				13 - Jan - 2009			
Departed Loc				13 - Jan - 2009			
Well Data							
Description	New / Used	Max pressure psig	Size in	ID in	Weight lbm/ft	Thread	Grade
Top MD ft		Bottom MD ft		Top TVD ft		Bottom TVD ft	
Sales/Rental/3 rd Party (HES)							
Description				Qty	Qty uom	Depth	Supplier
PLUG,CMTG,TOP,8 5/8,HWE,7.20 MIN/8.09 MA				1	EA		
Tools and Accessories							
Type	Size	Qty	Make	Depth	Type	Size	Qty
Guide Shoe					Packer		
Float Shoe					Bridge Plug		
Float Collar					Retainer		
Insert Float							
Stage Tool							
Miscellaneous Materials							
Gelling Agt		Conc		Surfactant		Conc	
Treatment Fld		Conc		Inhibitor		Conc	
Acid Type			Qty	Sand Type			Conc %
			Size				Qty

Fluid Data									
Stage/Plug #: 1									
Fluid #	Stage Type	Fluid Name	Qty	Qty uom	Mixing Density lbm/gal	Yield ft ³ /sk	Mix Fluid Gal/sk	Rate bbl/min	Total Mix Fluid Gal/sk
1	PolyFlake Dyed Spacer		40	bbl	.	.0	.0	.0	
2	Lead Cement	VERSACEM (TM) SYSTEM (452010)	150	sacks	12.3	2.38	13.75		
3	Tail Cement	VERSACEM (TM) SYSTEM (452010)	155	sacks	12.8	2.11	11.75		
4	Fresh Water Displacement		61.8	bbl	.	.0	.0	.0	
Calculated Values		Pressures		Volumes					
Displacement	61.8	Shut In: Instant		Lost Returns	0	Cement Slurry	121.8	Pad	
Top Of Cement	Surface	5 Min		Cement Returns	21	Actual Displacement	61.8	Treatment	
Frac Gradient		15 Min		Spacers	40	Load and Breakdown		Total Job	
Rates									
Circulating	6	Mixing	7	Displacement	10	Avg. Job	8		
Cement Left In Pipe	Amount	43.99 ft	Reason	Shoe Joint					
Frac Ring # 1 @	ID	Frac ring # 2 @	ID	Frac Ring # 3 @	ID	Frac Ring # 4 @	ID		
The Information Stated Herein Is Correct				Customer Representative Signature					

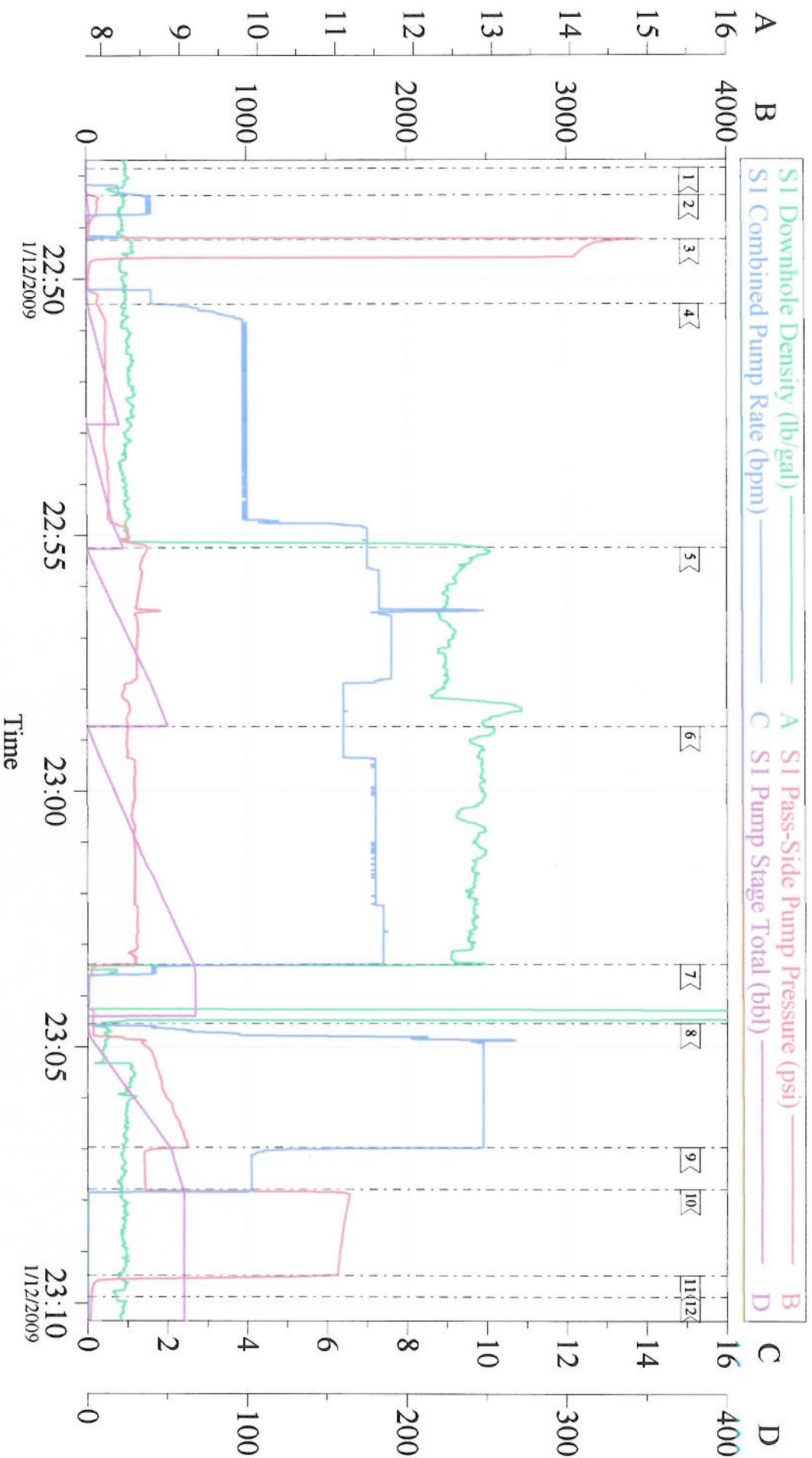
The Road to Excellence Starts with Safety

The Road to Excellence Starts with Safety			
Sold To #: 338668	Ship To #: 2695762	Quote #:	Sales Order #: 6435529
Customer: CHEVRON - MID-CONTINENT EBIZ		Customer Rep: Tatum, Elmer	
Well Name: SKR		Well #: 698-04-AV-08	API/UWI #: 05-045-17212
Field: SKINNER RIDGE	City (SAP): PARACHUTE	County/Parish: Garfield	State: Colorado
Legal Description:			
Lat: N 39.559 deg. OR N 39 deg. 33 min. 33.383 secs.		Long: W 108.338 deg. OR W -109 deg. 39 min. 41.612 secs.	
Contractor: CHEVRON		Rig/Platform Name/Num: H&P 318	
Job Purpose: Cement Surface Casing			Ticket Amount:
Well Type: Development Well		Job Type: Cement Surface Casing	
Sales Person: DUNNING, DUSTIN		Srvc Supervisor: HOEFER, BRYAN	MBU ID Emp #: 415775

Activity Description	Date/Time	Cht #	Rate bbl/min	Volume bbl		Pressure psig		Comments
				Stage	Total	Tubing	Casing	
Call Out	01/12/2009 17:00							
Pre-Convoy Safety Meeting	01/12/2009 19:45							WITH ALL HES EE'S
Arrive At Loc	01/12/2009 21:15							RIG STILL RUNNING CASING, Rig circulated for 1 hr before job, good returns throughout
Assessment Of Location Safety Meeting	01/12/2009 21:15							
Pre-Rig Up Safety Meeting	01/12/2009 21:20							WITH ALL HES EE'S
Rig-Up Equipment	01/12/2009 21:25							ELITE #8, 1 660 BULK TRUCK, IRON TO FLOOR, TWO WATER LINES
Pre-Job Safety Meeting	01/12/2009 23:30							WITH RIG CREW AND ALL HES EE'S
Start Job	01/12/2009 23:42							TD-1035, TP-1016, SJ-43.99, FC-972.01, MW-9.2, 8 5/8 24# J-55 CASING
Pump Water	01/12/2009 23:43		1	2			110.0	FRESH WATER, FILL LINES
Pressure Test	01/12/2009 23:46		0.5	0.1			3200.0	TEST LINES TO 3200PSI, TEST OK
Pump Spacer 1	01/12/2009 23:47		7	40			244.0	FRESH WATER WITH POLYFLAKE
Pump Lead Cement	01/12/2009 23:57		7	63.6			331.0	150sks of Versacem pumped @12.3#, yield 2.38, water 13.75
Pump Tail Cement	01/13/2009 00:07		7	58.2			312.0	155sks of Versacem pumped at 12.8#, yield 2.11, water 11.75
Shutdown	01/13/2009 00:16							

Activity Description	Date/Time	Cht #	Rate bbl/ min	Volume bbl		Pressure psig		Comments
				Stage	Total	Tubing	Casing	
Drop Plug	01/13/2009 00:16							Top Plug, Plug left container
Pump Displacement	01/13/2009 00:18		10	61.8			566.0	Fresh Water
Slow Rate	01/13/2009 00:23		4	50			350.0	
Bump Plug	01/13/2009 00:25		4	61.8			1600. 0	
Check Floats	01/13/2009 00:28							Floats held
End Job	01/13/2009 00:30							GOOD RETURNS THROUGHOUT JOB, NO MOVEMENT OF PIPE THROUGHOUT JOB, 21BBLS CIRCULATED TO THE PIT
Post-Job Safety Meeting (Pre Rig-Down)	01/13/2009 00:35							WITH ALL HES EE'S
Rig-Down Equipment	01/13/2009 00:40							
Pre-Convoy Safety Meeting	01/13/2009 02:25							WITH ALL HES EE'S
Crew Leave Location	01/13/2009 02:30							THANK YOU FOR USING GRAND JUNCTION HALLIBURTON CEMENT DEPARTMENT, BRYAN HOEFER AND CREW

Chevron H&P 318



Local Event Log

1 Start Job	22:47:51	2 Prime Lines	22:48:22	3 Test Lines	22:49:15
4 Pump Spacer	22:50:29	5 Pump Lead Cement	22:55:14	6 Pump Tail Cement	22:58:44
7 Shut down/Drop Plug	23:03:23	8 Pump Displacement	23:04:33	9 Slow rate	23:06:58
10 Bump Plug	23:07:47	11 Check Floats	23:09:27	12 End Job	23:09:53

Customer: Chevron	Job Date: 12-Jan-2009	Sales Order #: 6435529
Well Description: SKR-698-04-AV-08	Job Type: Surface	ADC Used: Yes
Company Rep: Elmer Tatum	Cement Supervisor: Bryan Hoefer	File # / Operator: #8 Frank Little