
CHEVRON - MID-CONTINENT EBIZ

**SKR 698-04-AV-05
SKINNER RIDGE
Garfield County , Colorado**

Cement Surface Casing
02-Dec-2008

Job Site Documents

The Road to Excellence Starts with Safety

Sold To #: 338668	Ship To #: 2695759	Quote #:	Sales Order #: 6348195
Customer: CHEVRON - MID-CONTINENT EBIZ	Customer Rep: MORGAN, RANDY		
Well Name: SKR	Well #: 698-04-AV-05	API/UWI #: 05-045-17214	
Field: SKINNER RIDGE	City (SAP): PARACHUTE	County/Parish: Garfield	State: Colorado
Lat: N 39.559 deg. OR N 39 deg. 33 min. 33.34 secs.	Long: W 108.338 deg. OR W -109 deg. 39 min. 41.461 secs.		
Contractor: H&P 318	Rig/Platform Name/Num: H&P 318		
Job Purpose: Cement Surface Casing			
Well Type: Development Well	Job Type: Cement Surface Casing		
Sales Person: HARTLEY, RICHARD	Srv Supervisor: leist, james	MBU ID Emp #: 362787	

Job Personnel

HES Emp Name	Exp Hrs	Emp #	HES Emp Name	Exp Hrs	Emp #	HES Emp Name	Exp Hrs	Emp #
ANGLESTEIN, TROY Edward WM	1	436099	CARPENTER, MARK Alan	1	442360	leist, james	1	362787
MOORE, ALEX Vincent	1	158427	VIGIL, JOSHUA Quentin	1	447606			

Equipment

HES Unit #	Distance-1 way	HES Unit #	Distance-1 way	HES Unit #	Distance-1 way	HES Unit #	Distance-1 way
10638378	120 mile	10719776	120 mile	10867531	120 mile	10989685	120 mile

Job Hours

Date	On Location Hours	Operating Hours	Date	On Location Hours	Operating Hours	Date	On Location Hours	Operating Hours
12-2-08	2	1						

TOTAL	Total is the sum of each column separately							
-------	--	--	--	--	--	--	--	--

Job

Formation Name	Formation Depth (MD)	Top	Bottom	Form Type	Job depth MD	Job Depth TVD	Water Depth	Perforation Depth (MD)	From	To
				BHST	1050. ft	1050. ft				
							Wk Ht Above Floor			4. ft

Job Times

Date	Time	Time Zone
02 - Dec - 2008	01:00	MST
02 - Dec - 2008	05:30	MST
02 - Dec - 2008	07:25	MST
02 - Dec - 2008	08:08	MST
02 - Dec - 2008	10:13	MST

Well Data

Description	New / Used	Max pressure psig	Size in	ID in	Weight lbm/ft	Thread	Grade	Top MD ft	Bottom MD ft	Top TVD ft	Bottom TVD ft
-------------	------------	-------------------	---------	-------	---------------	--------	-------	-----------	--------------	------------	---------------

Sales/Rental/3rd Party (HES)

Description	Qty	Qty uom	Depth	Supplier
PLUG,CMTG,TOP,8 5/8,HWE,7.20 MIN/8.09 MA	1	EA		

Tools and Accessories

Type	Size	Qty	Make	Depth	Type	Size	Qty	Make	Depth	Type	Size	Qty	Make
Guide Shoe					Packer					Top Plug	8.625	1	
Float Shoe					Bridge Plug					Bottom Plug			
Float Collar					Retainer					SSR plug set			
Insert Float										Plug Container	8.625	1	
Stage Tool										Centralizers			

Miscellaneous Materials

Gelling Agt	Conc	Surfactant	Conc	Acid Type	Qty	Conc	%
Treatment Fld	Conc	Inhibitor	Conc	Sand Type	Size		Qty

Cementing Job Summary

Fluid Data									
Stage/Plug #: 1									
Fluid #	Stage Type	Fluid Name	Qty	Qty uom	Mixing Density lbm/gal	Yield ft ³ /sk	Mix Fluid Gal/sk	Rate bbl/min	Total Mix Fluid Gal/sk
1	DYE SPACER AND POLYFLAKE		50	bbl	.	.0	.0	.0	
2	Lead Cement	VERSACEM (TM) SYSTEM (452010)	155	sacks	12.3	2.38	13.75		
	2 %	CAL-SEAL 60, 50 LB BAG (101217146)							
	2 %	ECONOLITE (100001580)							
	0.3 %	VERSASET, 55 LB SK (101376573)							
	5.64 lbm	SALT, 100 LB BAG (100003652)							
	0.125 lbm	POLY-E-FLAKE (101216940)							
	0.25 %	D-AIR 3000 (101007446)							
	13.75 Gal	FRESH WATER							
3	Tail Cement	VERSACEM (TM) SYSTEM (452010)	160	sacks	12.8	2.11	11.75		
	2 %	CAL-SEAL 60, 50 LB BAG (101217146)							
	2 %	ECONOLITE (100001580)							
	0.3 %	VERSASET, 55 LB SK (101376573)							
	5.64 lbm	SALT, 100 LB BAG (100003652)							
	11.75 Gal	FRESH WATER							
4	DISPLACEMENT		63	bbl	.	.0	.0	.0	
Calculated Values		Pressures		Volumes					
Displacement	63	Shut In: Instant		Lost Returns	0	Cement Slurry	125.8	Pad	
Top Of Cement		5 Min		Cement Returns	36	Actual Displacement	63	Treatment	
Frac Gradient		15 Min		Spacers	50	Load and Breakdown		Total Job	
Rates									
Circulating	RIG, 8	Mixing	8	Displacement	8	Avg. Job	8		
Cement Left In Pipe	Amount 43.6 ft	Reason	Shoe Joint						
Frac Ring # 1 @	ID	Frac ring # 2 @	ID	Frac Ring # 3 @	ID	Frac Ring # 4 @	ID		
The Information Stated Herein Is Correct				Customer Representative Signature					

The Road to Excellence Starts with Safety

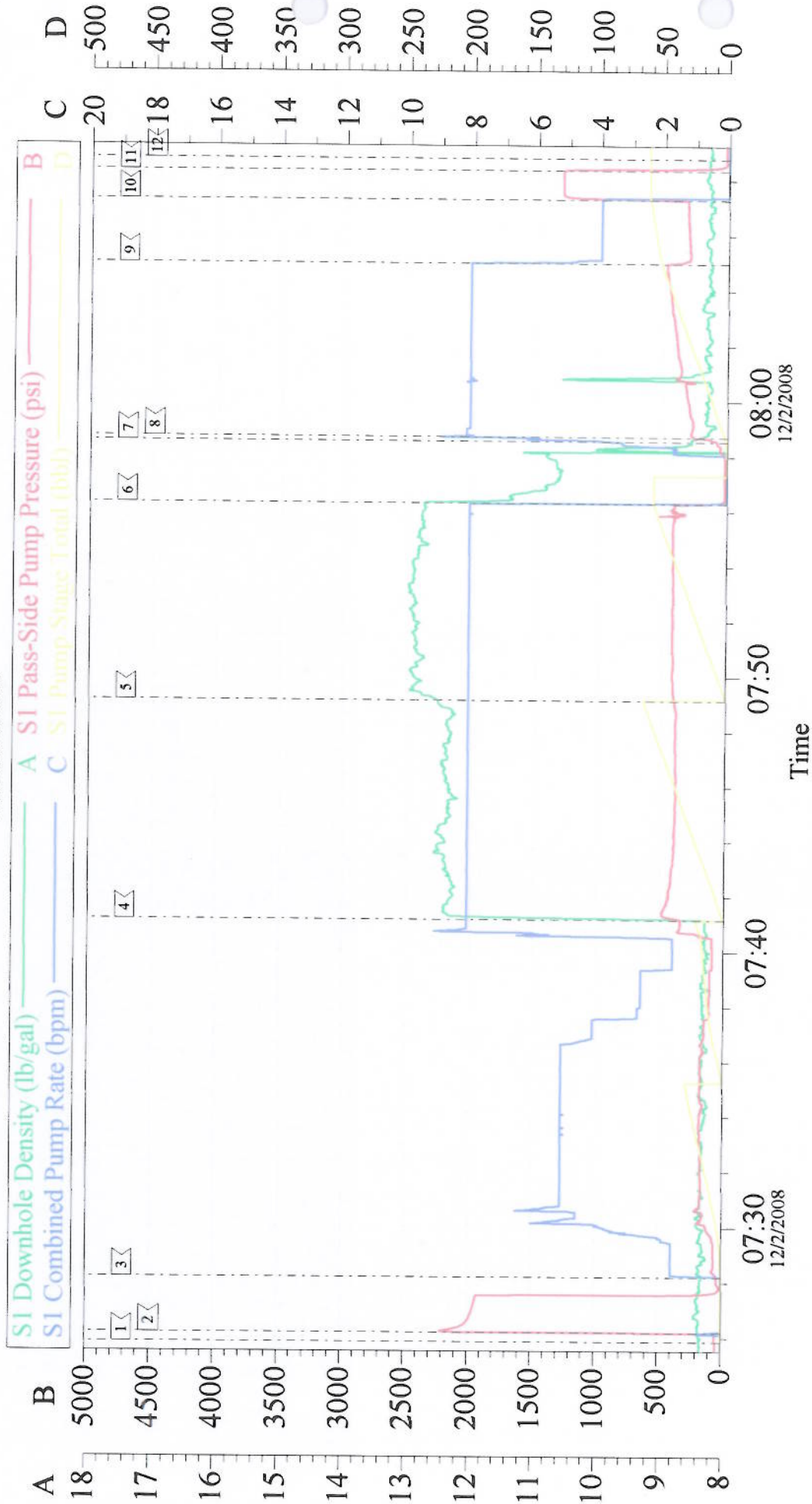
Sold To #: 338668	Ship To #: 2695759	Quote #:	Sales Order #: 6348195
Customer: CHEVRON - MID-CONTINENT EBIZ	Customer Rep: MORGAN, RANDY		
Well Name: SKR	Well #: 698-04-AV-05	API/UWI #: 05-045-17214	
Field: SKINNER RIDGE	City (SAP): PARACHUTE	County/Parish: Garfield	State: Colorado
Legal Description:			
Lat: N 39.559 deg. OR N 39 deg. 33 min. 33.34 secs.		Long: W 108.338 deg. OR W -109 deg. 39 min. 41.461 secs.	
Contractor: H&P 318	Rig/Platform Name/Num: H&P 318		
Job Purpose: Cement Surface Casing		Ticket Amount:	
Well Type: Development Well	Job Type: Cement Surface Casing		
Sales Person: HARTLEY, RICHARD	Srv Supervisor: leist, james	MBU ID Emp #: 362787	

Activity Description	Date/Time	Cht #	Rate bbl/min	Volume bbl		Pressure psig		Comments
				Stage	Total	Tubing	Casing	
Call Out	12/02/2008 01:00							TP-1035 8.625, 24#, TD-1050, S.J. 43.6
Pre-Convoy Safety Meeting	12/02/2008 02:30							WITH ALL HES PERSONAL
Crew Leave Yard	12/02/2008 04:00							GOOD CIRULATION THROUGHOUT JOB, NO PIPE MOVEMENT DURING JOB, 36 BBLS CMT TO SURFACE
Arrive At Loc	12/02/2008 05:00							
Assessment Of Location Safety Meeting	12/02/2008 05:30							WITH ALL HES PERSONAL
Pre-Rig Up Safety Meeting	12/02/2008 05:45							WITH ALL HES PERSONAL
Rig-Up Completed	12/02/2008 06:30							
Pre-Job Safety Meeting	12/02/2008 06:45							WITH ALL ON LOCATION PERSONAL
Start Job	12/02/2008 07:25							
Pressure Test	12/02/2008 07:26						2000.0	
Pump Spacer 1	12/02/2008 07:28		5		50		180.0	H2O FIRST 30 BBLS, POLYFLAKE AND DYE LAST 20 BBLS
Pump Lead Cement	12/02/2008 07:41		8		65.7		390.0	155 SKS, 12.3 PPG, 2.38 FT3/SK, 13.75 GAL/SK
Pump Tail Cement	12/02/2008 07:49		8		60.1		480.0	160 SKS, 12.8 PPG, 2.11 FT3/SK, 11.75 GAL/SK
Shutdown	12/02/2008 07:56							
Drop Top Plug	12/02/2008 07:58							AWAY

Cementing Job Log

Activity Description	Date/Time	Cht #	Rate bbl/ min	Volume bbl		Pressure psig		Comments
				Stage	Total	Tubing	Casing	
Pump Displacement	12/02/2008 07:58		8		63		300.0	H2O
Slow Rate	12/02/2008 08:04		4		53		321.0	
Bump Plug	12/02/2008 08:07		4		63		328.0	
Check Floats	12/02/2008 08:08						1304. 0	HOLDING
End Job	12/02/2008 08:08							
Pre-Rig Down Safety Meeting	12/02/2008 08:10							WITH ALL HES PERSONAL
Rig-Down Completed	12/02/2008 08:45							
Pre-Convoy Safety Meeting	12/02/2008 09:30							WITH ALL HES PERSONAL
Crew Leave Location	12/02/2008 10:13							
Comment	12/02/2008 10:44							THANK YOU FOR USING HALLIBURTON

CHEVRON SURFACE



Local Event Log

1 START JOB	07:25:52	2 PRESSURE TEST	07:26:12	3 PUMP SPACER	07:28:12
4 PUMP LEAD CMT	07:41:10	5 PUMP TAIL CMT	07:49:08	6 SHUTDOWN	07:56:18
7 DROP TOP PLUG	07:58:33	8 PUMP DISPLACEMENT	07:58:42	9 SLOW RATE	08:04:59
10 BUMP PLUG	08:07:16	11 CHECK FLOATS	08:08:20	12 END JOB	08:08:46

Customer: CHEVRON	Job Date: 02-Dec-2008	Sales Order #: 6348195
Well Description: SKR 698-04-AV-05	Job Type: SURFACE	ADC Used: YES
Company Rep: RANDY MORGAN	Cement Supervisor: JAMES LEIST	Elite #: 8