

**CHEVRON - MID-CONTINENT EBIZ
11111 S WILCREST DR - DO NOT MAIL
HOUSTON, Texas**

SKR
SKR 698-04-AV-03

CHEVRON/H&P/318

Post Job Summary

Cement Production Casing

Prepared for: DAN MIER
Date Prepared: 03/01/09
Version: 1

Service Supervisor: GALLEGOS, JASON

Submitted by:

HALLIBURTON

The Road to Excellence Starts with Safety

Sold To #: 338668	Ship To #: 2695747	Quote #:	Sales Order #: 6521281
Customer: CHEVRON - MID-CONTINENT EBIZ		Customer Rep: Meier, Dan	
Well Name: SKR	Well #: 698-04-AV-03	API/UWI #: 05-045-17230	
Field: SKINNER RIDGE	City (SAP): PARACHUTE	County/Parish: Garfield	State: Colorado
Lat: N 39.559 deg. OR N 39 deg. 33 min. 33.379 secs.		Long: W 108.339 deg. OR W -109 deg. 39 min. 41.382 secs.	
Contractor: CHEVRON	Rig/Platform Name/Num: H&P318		
Job Purpose: Cement Production Casing			
Well Type: Development Well	Job Type: Cement Production Casing		
Sales Person: DUNNING, DUSTIN	Srvc Supervisor: GALLEGOS, JASON	MBU ID Emp #: 386647	

Job Personnel

HES Emp Name	Exp Hrs	Emp #	HES Emp Name	Exp Hrs	Emp #	HES Emp Name	Exp Hrs	Emp #
BLANCHETTE, JAMES George	6.5	371360	CARPENTER, MARK Alan	6.5	442360	CLARKE, GERALD C	6.5	441763
DUBOIS, ISAAC	6.5	456690	GALLEGOS, JASON Michael	6.5	386647	HANSEN, TED	6.5	396847
LUNCEFORD, STEVEN	6.5	457512	NOHAVA, MATTHEW	6.5	452649	SAUTER, MARK A	6.5	410526

Equipment

HES Unit #	Distance-1 way	HES Unit #	Distance-1 way	HES Unit #	Distance-1 way	HES Unit #	Distance-1 way
10829462	120 MILES	10951247	120 MILES	10897909	120 MILES	10872429	120 MILES
10741109	120 MILES	10055148	120 MILES	10804579	120 MILES	10784080	120 MILES
10804567	120 MILES	10025118	120 MILES	10237751	120 MILES		

Job Hours

Date	On Location Hours	Operating Hours	Date	On Location Hours	Operating Hours	Date	On Location Hours	Operating Hours
03/01/09	6.5	4						
TOTAL	Total is the sum of each column separately							

Job

Formation Name	Formation Depth (MD)	Top	Bottom	Form Type	Job depth MD	Job Depth TVD	Wk Ht Above Floor	Perforation Depth (MD)	From	To	Deparated Loc	Date	Time	Time Zone
				BHST	6196. ft	6225. ft	5. ft					01 - Mar - 2009	01:00	MST
												01 - Mar - 2009	06:00	MST
												01 - Mar - 2009	08:33	MST
												01 - Mar - 2009	10:14	MST
												01 - Mar - 2009	12:30	MST

Well Data

Description	New / Used	Max pressure psig	Size in	ID in	Weight lbm/ft	Thread	Grade	Top MD ft	Bottom MD ft	Top TVD ft	Bottom TVD ft
7 7/8 Open Hole Section				7.875				1000.	6225.		
4 1/2 Production Casing	New		4.5	4.	11.6		N-80		6196.		6196.
8 5/8 Surface Casing	Unknown		8.625	8.097	24.				1000.		

Sales/Rental/3rd Party (HES)

Description	Qty	Qty uom	Depth	Supplier
PORT. DAS W/CEMWIN;ACQUIRE W/HES, ZI	1	JOB		
ADC (AUTO DENSITY CTRL) SYS, /JOB,ZI	1	JOB		

Tools and Accessories

Type	Size	Qty	Make	Depth	Type	Size	Qty	Make	Depth	Type	Size	Qty	Make
Guide Shoe					Packer					Top Plug	4.5	1	
Float Shoe					Bridge Plug					Bottom Plug			
Float Collar					Retainer					SSR plug set			
Insert Float										Plug Container	4.5	1	

Miscellaneous Materials													
Gelling Agt		Conc		Surfactant		Conc		Acid Type		Qty		Conc	%
Treatment Fld		Conc		Inhibitor		Conc		Sand Type		Size		Qty	
Fluid Data													
Stage/Plug #: 1													
Fluid #	Stage Type	Fluid Name			Qty	Qty uom	Mixing Density lbm/gal	Yield ft ³ /sk	Mix Fluid Gal/sk	Rate bbl/min	Total Mix Fluid Gal/sk		
1	Dyed Polyflake Spacer				40.00	bbl	8.33	.0	.0	6			
2	Lead Cement	VARICEM (TM) CEMENT (452009)			330.0	sacks	12.8	1.61	7.31	6	7.7		
		7.704 Gal			FRESH WATER								
3	Tail Cement	VARICEM (TM) CEMENT (452009)			610.0	sacks	13.2	1.47	6.32	6	6.72		
		6.719 Gal			FRESH WATER								
4	KCL DISPLACEMENT				95.3	bbl	8.4	.0	.0	8			
Calculated Values		Pressures			Volumes								
Displacement	95.3	Shut In: Instant			Lost Returns	NONE	Cement Slurry		254.3	Pad			
Top Of Cement		5 Min			Cement Returns	NONE	Actual Displacement		95.3	Treatment			
Frac Gradient		15 Min			Spacers	40	Load and Breakdown			Total Job	399.6		
Rates													
Circulating		Mixing		6	Displacement		8	Avg. Job		7			
Cement Left In Pipe	Amount	46 ft	Reason	Shoe Joint									
Frac Ring # 1 @	ID	Frac ring # 2 @	ID	Frac Ring # 3 @	ID	Frac Ring # 4 @	ID						
The Information Stated Herein Is Correct				Customer Representative Signature									

The Road to Excellence Starts with Safety

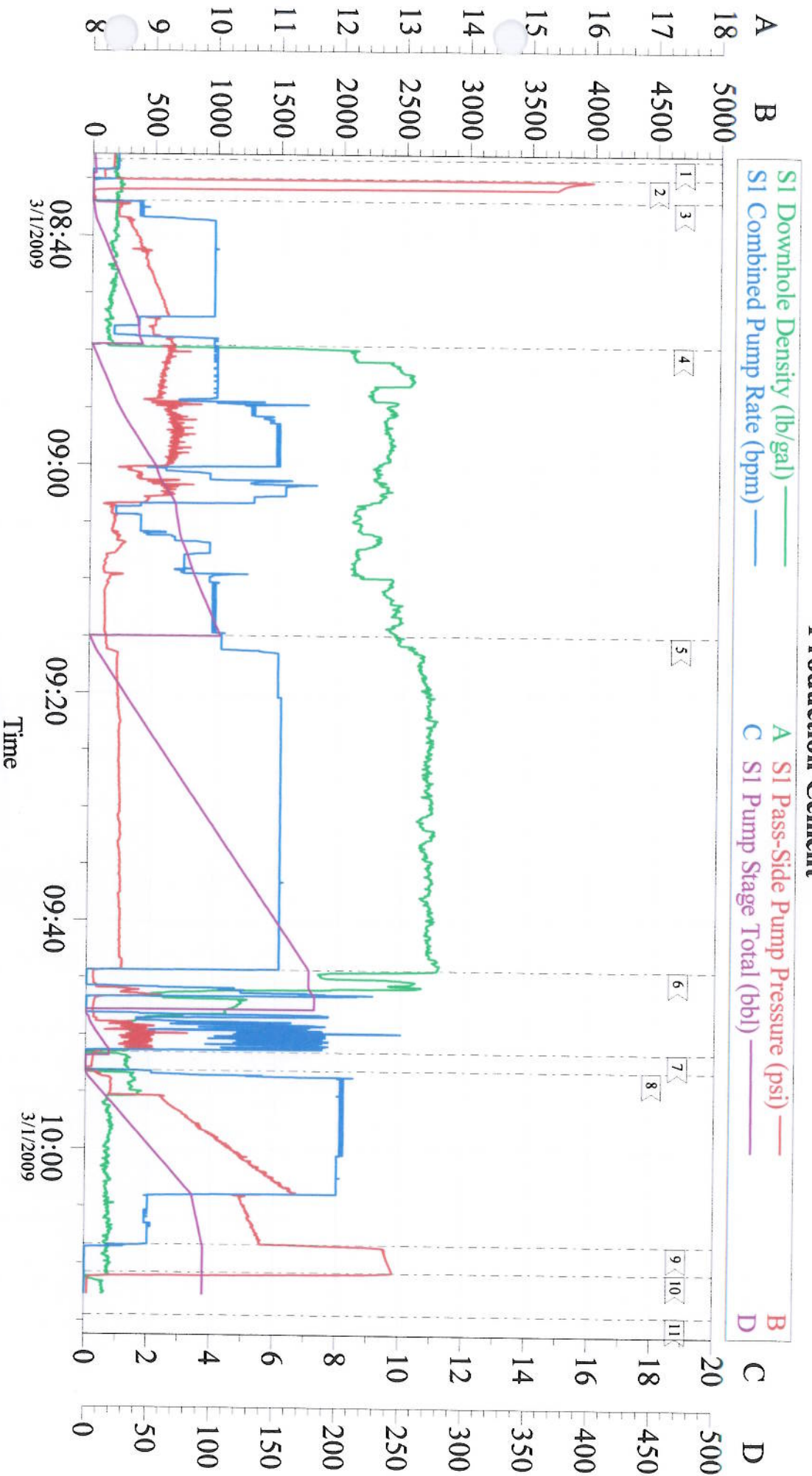
Sold To #: 338668	Ship To #: 2695747	Quote #:	Sales Order #: 6521281
Customer: CHEVRON - MID-CONTINENT EBIZ		Customer Rep: Meier, Dan	
Well Name: SKR	Well #: 698-04-AV-03	API/UWI #: 05-045-17230	
Field: SKINNER RIDGE	City (SAP): PARACHUTE	County/Parish: Garfield	State: Colorado
Legal Description:			
Lat: N 39.559 deg. OR N 39 deg. 33 min. 33.379 secs.		Long: W 108.339 deg. OR W -109 deg. 39 min. 41.382 secs.	
Contractor: CHEVRON		Rig/Platform Name/Num: H&P318	
Job Purpose: Cement Production Casing		Ticket Amount:	
Well Type: Development Well		Job Type: Cement Production Casing	
Sales Person: DUNNING, DUSTIN		Srvs Supervisor: GALLEGOS, JASON	
		MBU ID Emp #: 386647	

Activity Description	Date/Time	Cht #	Rate bbl/ min	Volume bbl		Pressure psig		Comments
				Stage	Total	Tubing	Casing	
Call Out	03/01/2009 01:00							
Depart Yard Safety Meeting	03/01/2009 02:50							ATTENDED BY ENTIRE HES CREW
Crew Leave Yard	03/01/2009 03:00							
Arrive At Loc	03/01/2009 05:00							RIG RUNNING CASING
Assessment Of Location Safety Meeting	03/01/2009 05:20							ATTENDED BY ENTIRE HES CREW
Other	03/01/2009 05:30							SPOT EQUIPMENT
Pre-Rig Up Safety Meeting	03/01/2009 06:50							ATTENDED BY ENTIRE HES CREW
Rig-Up Equipment	03/01/2009 07:00							
Pre-Job Safety Meeting	03/01/2009 08:00							ATTENDED BY ENTIRE HES CREW AND ENTIRE RIG CREW
Start Job	03/01/2009 08:33							TP 6196', TD 6225', SJ 46', MW 10.5#, CASING 4.5" 11.6# N80, HOLE 7 7/8" SURFACE SET @ 1001' (8.625", 24# J-55)
Test Lines	03/01/2009 08:35		2	2			4000. 0	PRESSURE HELD
Pump Spacer 1	03/01/2009 08:36		6	40			510.0	POLYFLAKE/DYE WATER

Cementing Job Log

Activity Description	Date/Time	Cht #	Rate bbl/min	Volume bbl		Pressure psig		Comments
				Stage	Total	Tubing	Casing	
Pump Lead Cement	03/01/2009 08:49		6	94.6			743.0	330 SACKS, MIXED @ 12.8 PPG, 1.61 YIELD, 7.31 GAL/SK (BP-15). BULK TRUCK HAD A DISCHARGE VALVE THAT WAS NOT OPENING FULLY WHICH CAUSED A DENSITY DIP DURING LEAD CEMENT. ONCE SWAPPED TO SILO PROBLEM WAS FIXED.
Pump Tail Cement	03/01/2009 09:14		6	159.7			259.0	610 SACKS, MIXED @ 13.2 PPG, 1.47 YIELD, 6.32 GAL/SK (BP-15)
Shutdown	03/01/2009 09:44							
Clean Lines	03/01/2009 09:47							
Drop Top Plug	03/01/2009 09:51							PLUG LAUNCHED
Pump Displacement	03/01/2009 09:53		8				1520.0	KCL WATER
Slow Rate	03/01/2009 10:05		2	85			1263.0	
Bump Plug	03/01/2009 10:08		2	95.3			1400.0	PRESSURED UP TO 2400 PSI.
Check Floats	03/01/2009 10:10							FLOATS HELD
End Job	03/01/2009 10:14							GOOD CIRCULATION THROUGHOUT JOB. PIPE WAS NOT MOVED DURING JOB.
Post-Job Safety Meeting (Pre Rig-Down)	03/01/2009 10:20							ATTENDED BY ENTIRE HES CREW
Rig-Down Equipment	03/01/2009 10:30							
Depart Location Safety Meeting	03/01/2009 12:20							ATTENDED BY ENTIRE HES CREW
Crew Leave Location	03/01/2009 12:30							THANK YOU FOR USING HALLIBURTON CEMENT, JASON GALLEGOS AND CREW.

Chevron Production Cement



Customer: CHEVRON - MID-CONTINENT
Well Description: SKR 694-04-AV-03
Company Rep: Dan Mier

Job Date: 01-Mar-2009
Job Type: Production
Cement Supervisor: Jason Gallegos

Sales Order #: 6521281
ADC Used: yes
Elite #: 11