



**CEMENT BOND
GAMMA RAY
CCL LOG**

Company EOG RESOURCES

Well CRITTER CREEK 17-21H
Field CRITTER CREEK
County WELD State CO

Company **EOG RESOURCES**
Well **CRITTER CREEK 17-21H**
Field **CRITTER CREEK**
County **WELD** State **CO**

Location: API # : 05-123-31505

Other Services

SEC 21 TWP 11N RGE 63W

Permanent Datum GROUND LEVEL Elevation 5229'
Log Measured From K.B. OF 22'
Drilling Measured From KELLY BUSHING

Elevation
K.B. 5251'
D.F.
G.L. 5229'

Date of Service 07-OCTOBER-10

Run Number ONE

Depth Driller or PBTD 6676'

Depth Logger 6661'

Bottom Log Interval 6660'

Top Log Interval 1350'

Open Hole Size NA

Type Fluid WATER

Fluid Level SURFACE

Fluid Density NA

Max. Recorded Temperature 196.7 DEG. F.

Max. Wellhead Pressure 0 PSI

Wellhead Connection 7 1/16" 5K FLANGE

Estimated Cement Top SEE LOG

Unit Number P-57

Wireline Size 7/32"

Location ROCK SPRINGS

Recorded By N. ROSS

Witnessed By MR. RICH FLORES

Size

NA

Wt/Ft

Top

Bottom

NA

36#

23#

SURFACE

SURFACE

1370'

7579'

<<< Fold Here >>>

All interpretations are opinions based on inferences from electrical or other measurements and Perf-O-Log cannot and does not guarantee the accuracy or correctness of any interpretation, and Perf-O-Log will not, except in the case of gross or willful negligence on our part, be liable or responsible for any loss, costs, damages, or expenses incurred or sustained by anyone resulting from any interpretation made by any of our officers, agents or employees. These interpretations are also subject to Perf-O-Log's general terms and conditions set out in our current Price Schedule.

Comments

LOG DEPTHS BASED ON WIRELINE MEASUREMENTS.

THANK YOU FOR USING PERF-O-LOG

Your Perf-O-Log Crew

Engineer: NICK ROSS
Operator: SEAN RAUERT
Operator: RON GRANT
Operator: CHUCK BRYAN

Tool Data - Services

CCL
SCBL
GR

Serial Number



MAIN PASS

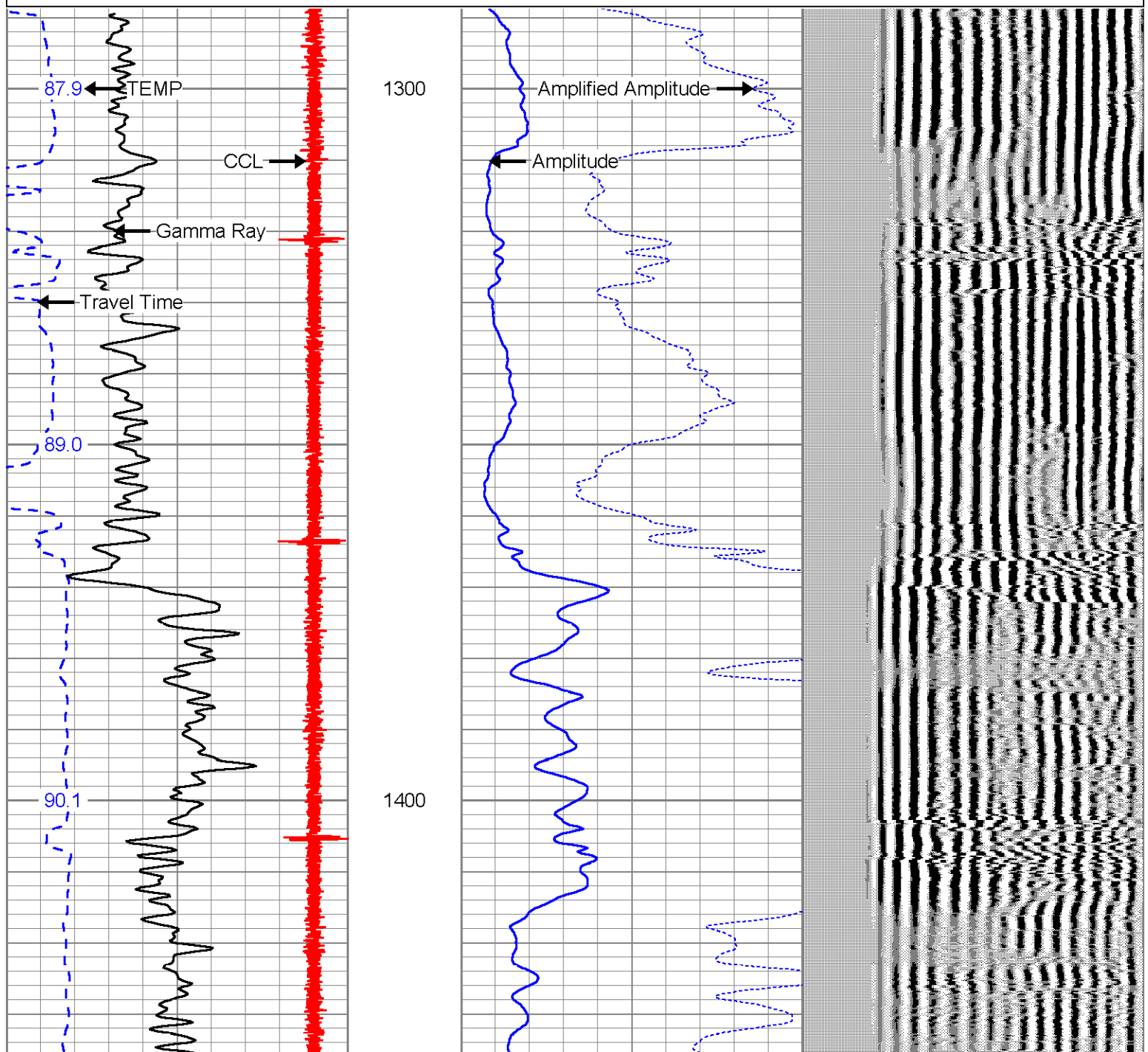
UPPER SECTION

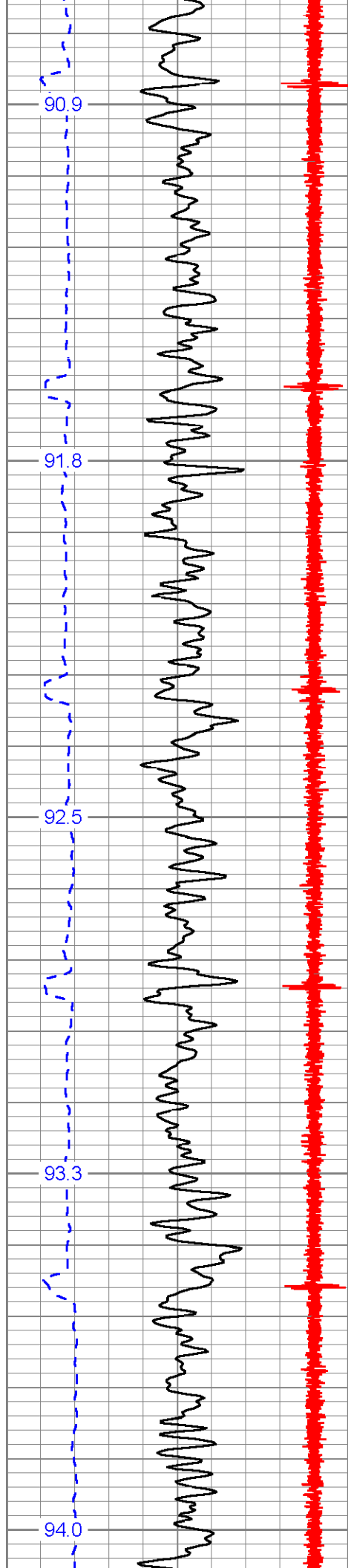
Database File: crittercreek17.db
Dataset Pathname: pass7
Presentation Format: sec2cbl
Dataset Creation: Wed Jan 01 02:14:22 2003 by Log Std Casedhole 07122
Charted by: Depth in Feet scaled 1:240

285	Travel Time (usec)	185
-9	CCL	1
0	Gamma Ray (cps)	150

0	Amplitude (mV)	100	200	Variable Density	1200
0	Amplified Amplitude (mV)	20			

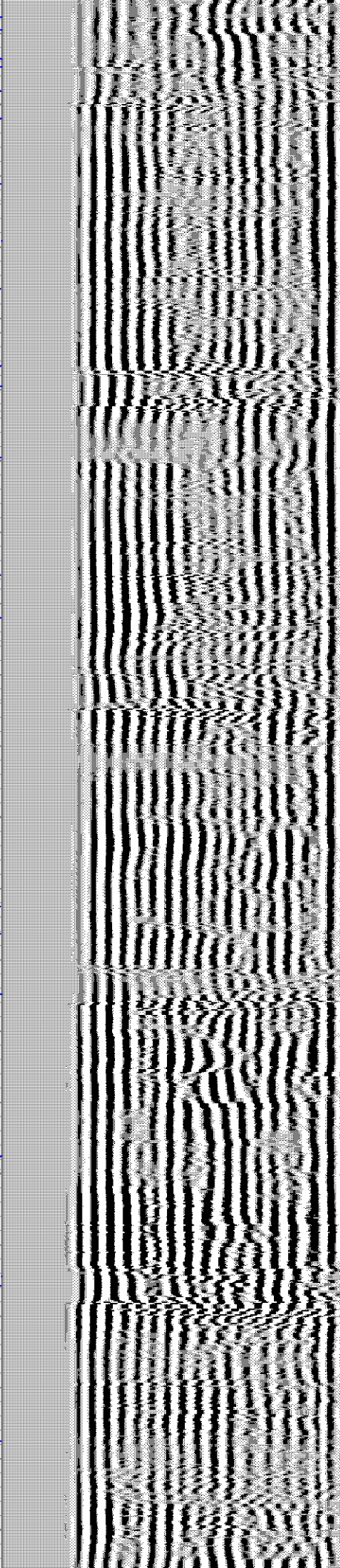
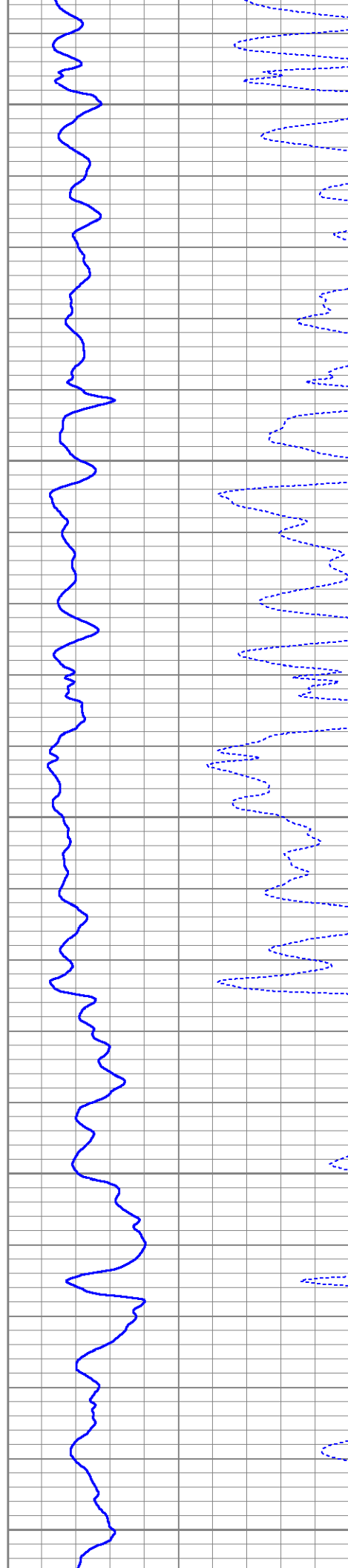
TEMP
(degF)

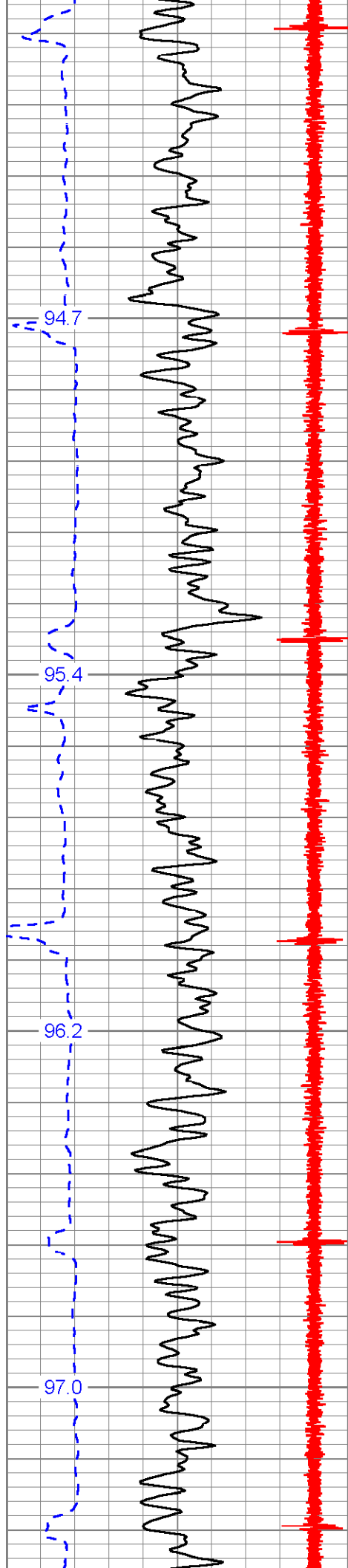




1500

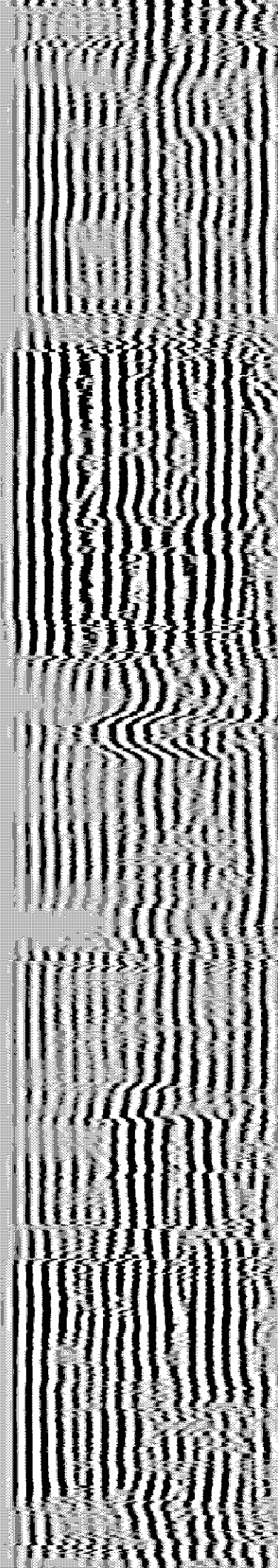
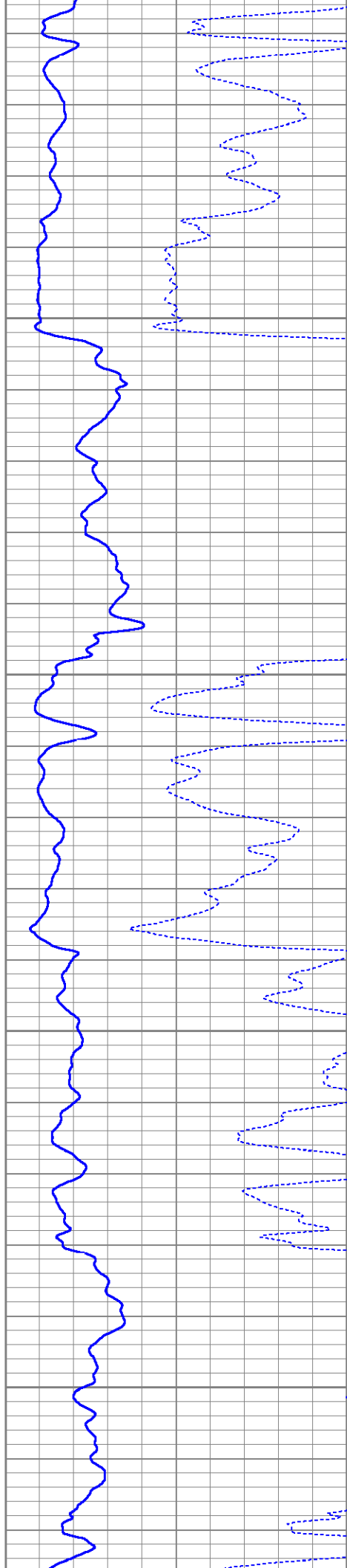
1600

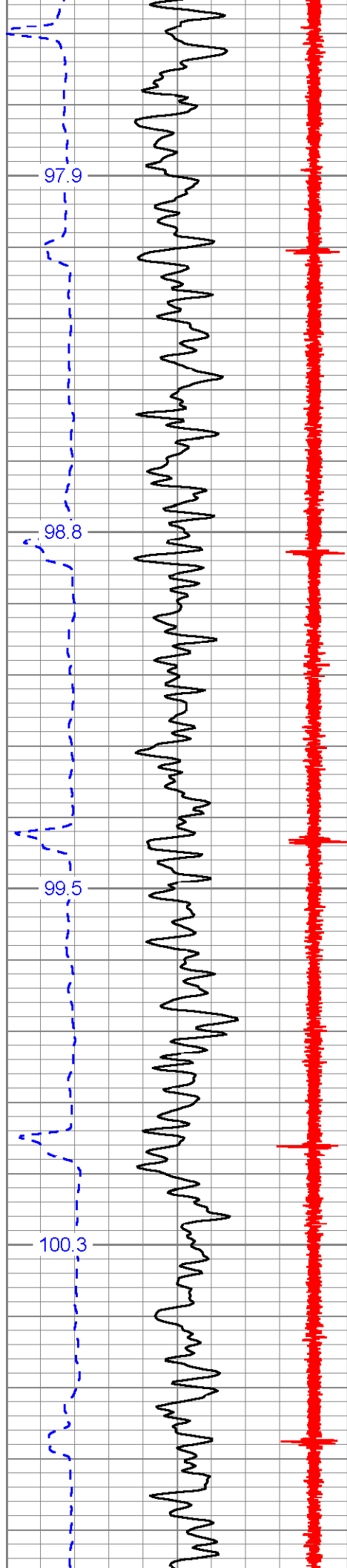




1700

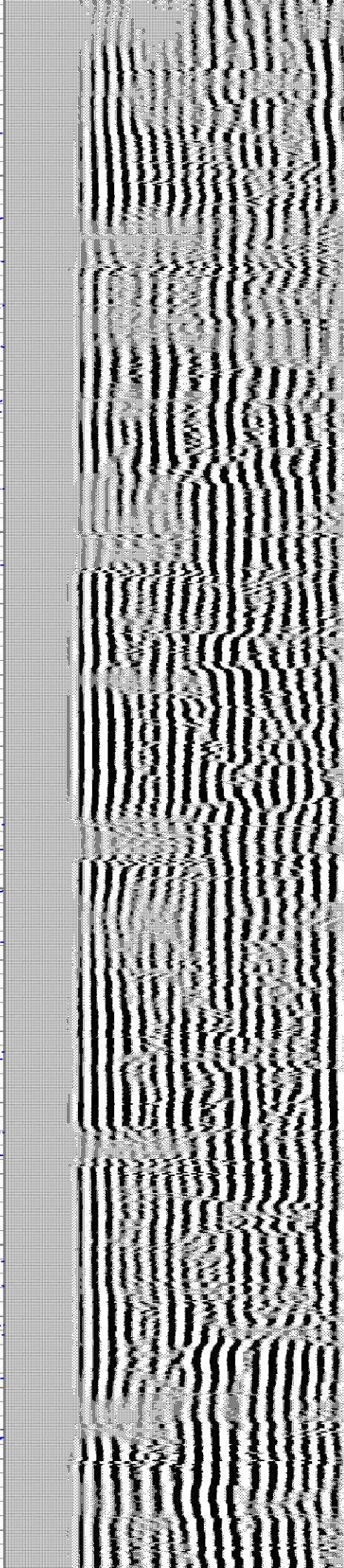
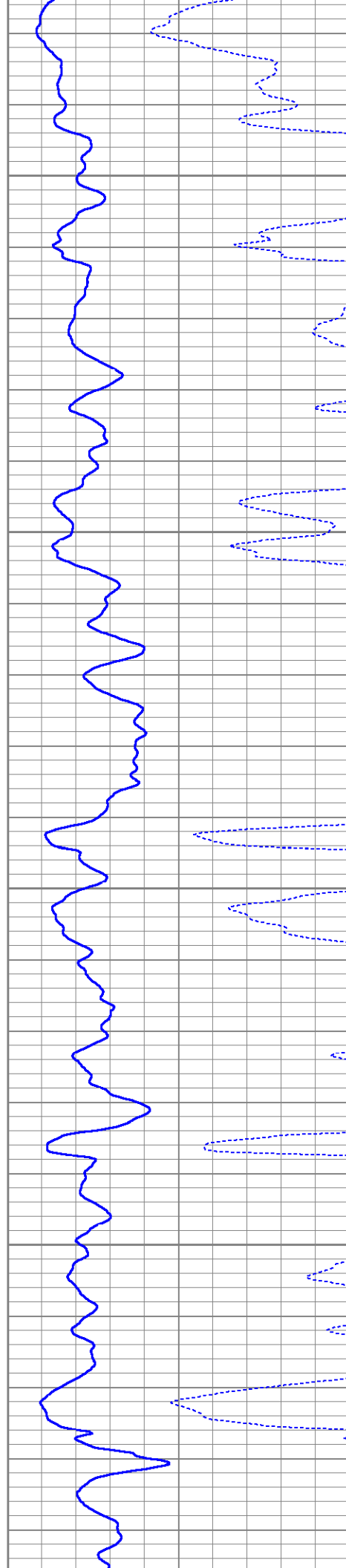
1800

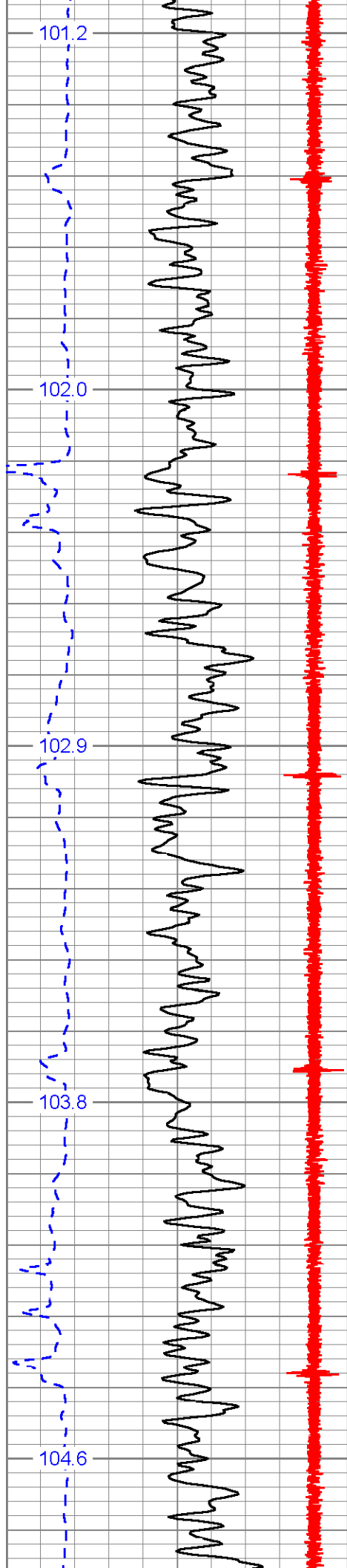




1900

2000

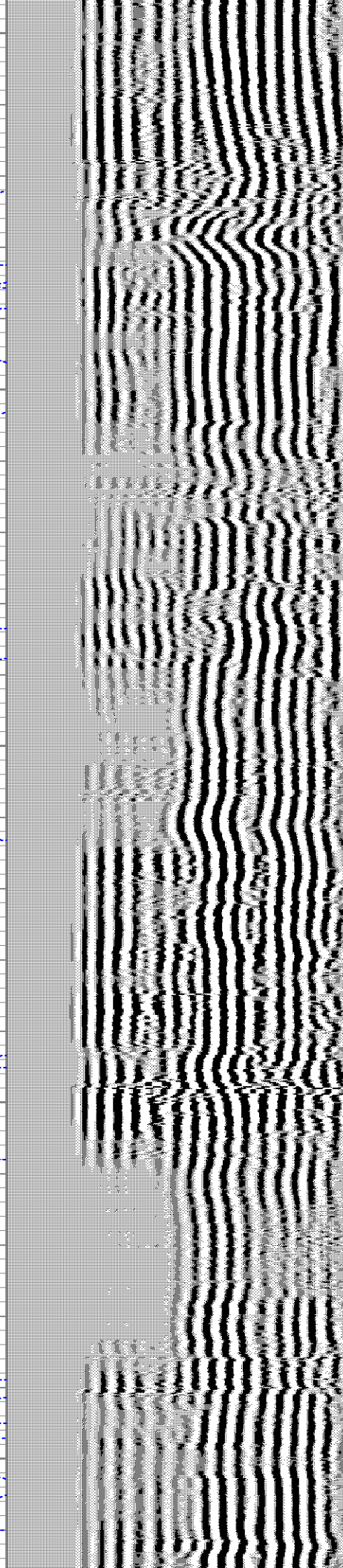


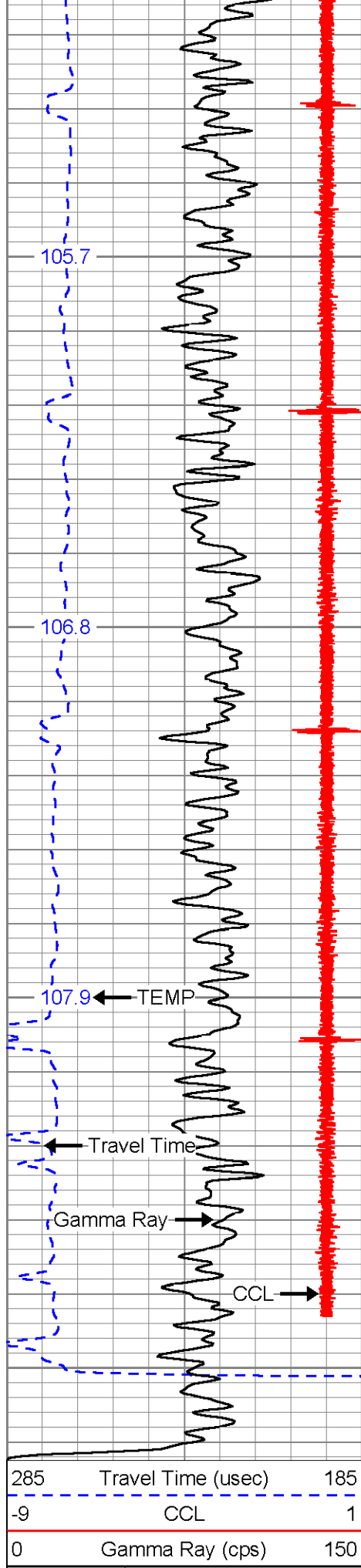


2100

2200

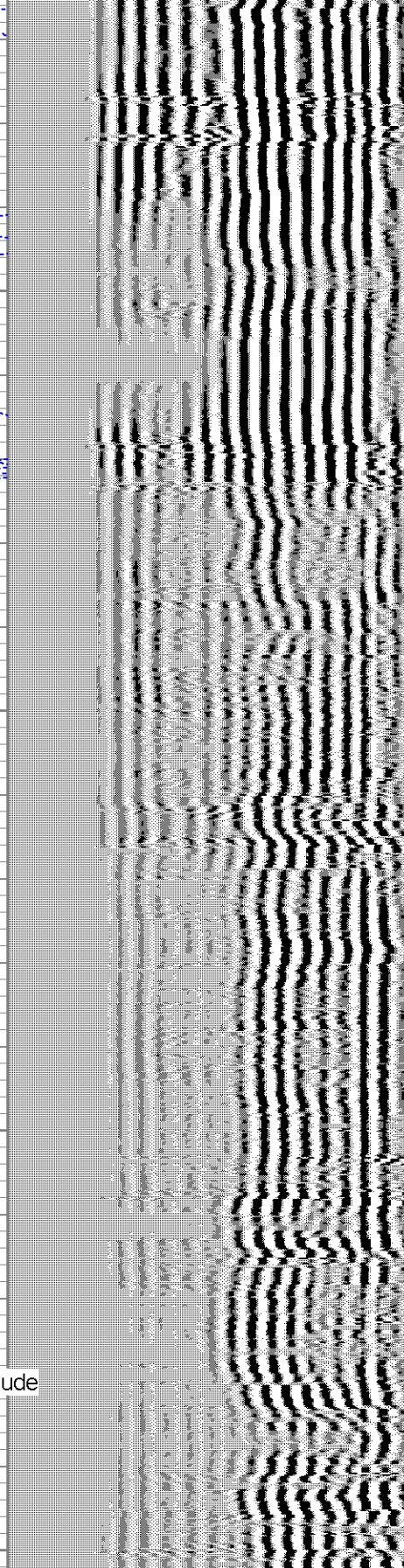
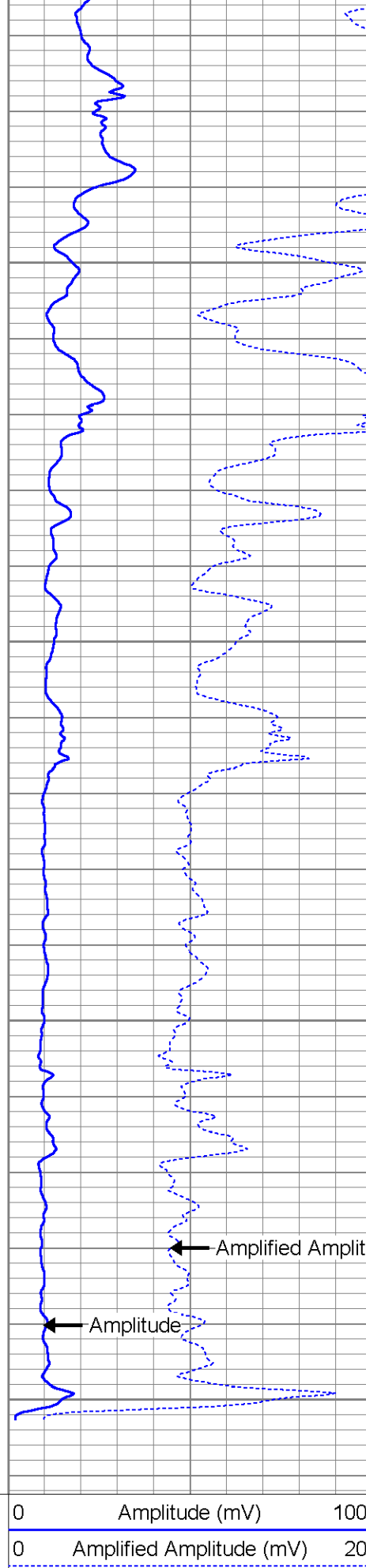
2300





2400

2500



200 Variable Density 1200



MAIN PASS

UPPER SECTION



MAIN PASS

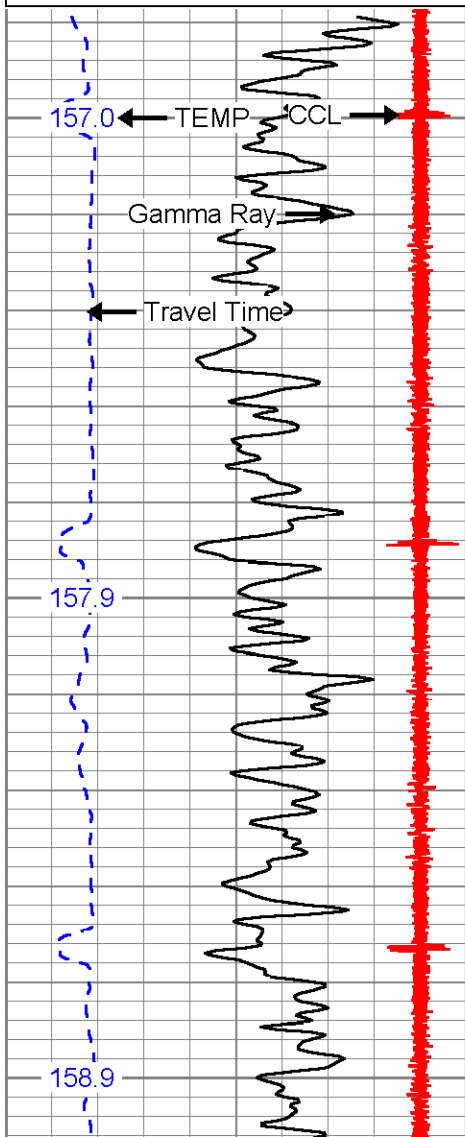
LOWER SECTION

Database File: crittercreek17.db
Dataset Pathname: pass5
Presentation Format: sec2cbl
Dataset Creation: Wed Jan 01 01:27:27 2003 by Log Std Casedhole 07122
Charted by: Depth in Feet scaled 1:240

285	Travel Time (usec)	185
-9	CCL	1
0	Gamma Ray (cps)	150

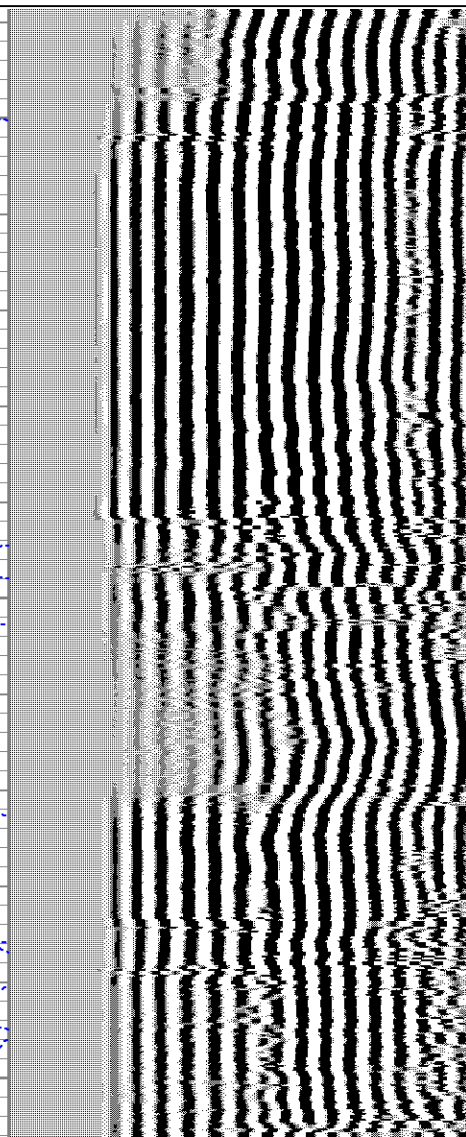
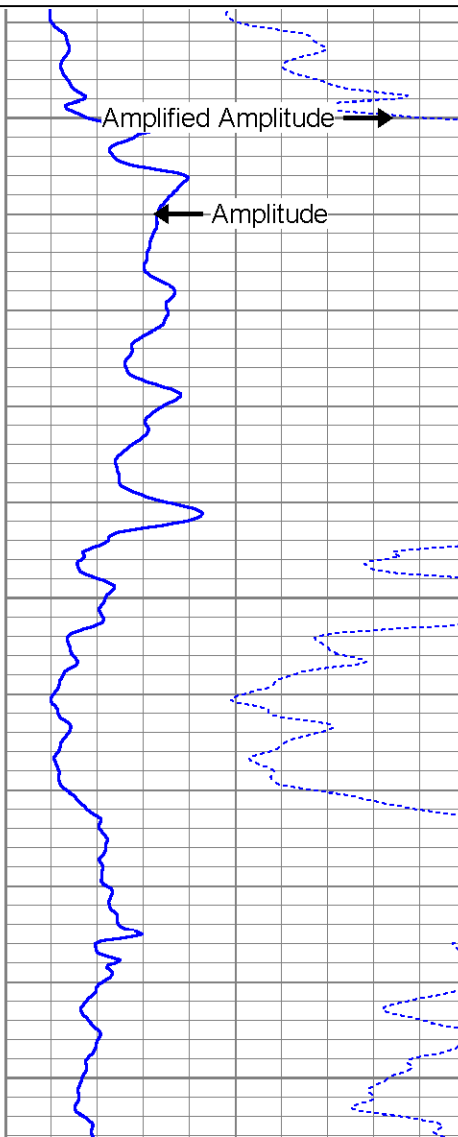
0	Amplitude (mV)	100	200	Variable Density	1200
0	Amplified Amplitude (mV)	20			

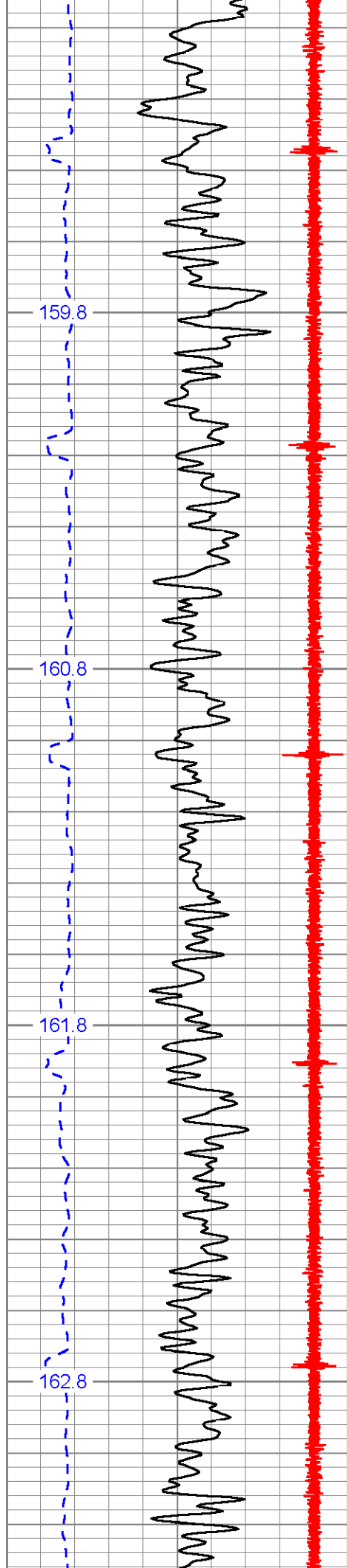
TEMP
(degF)



5000

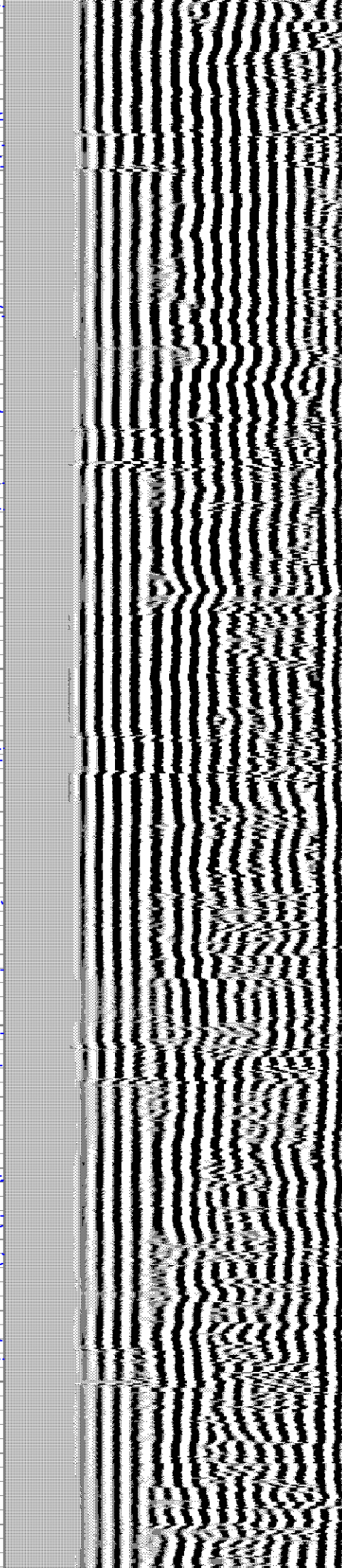
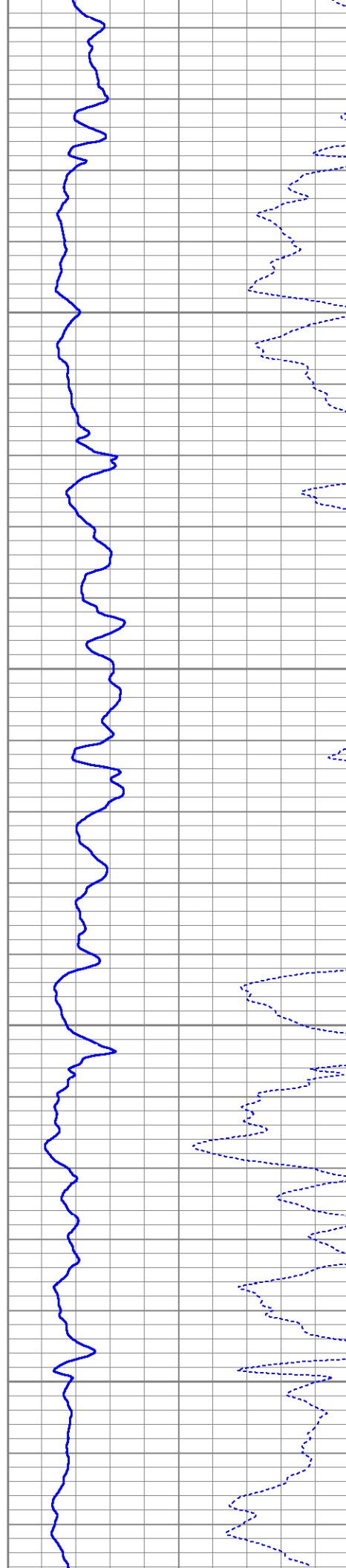
5100

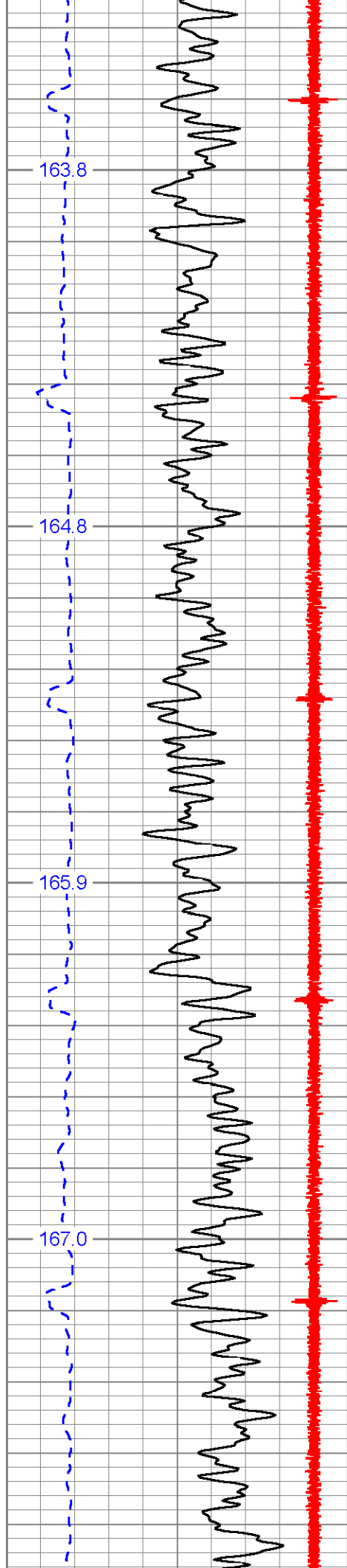




5200

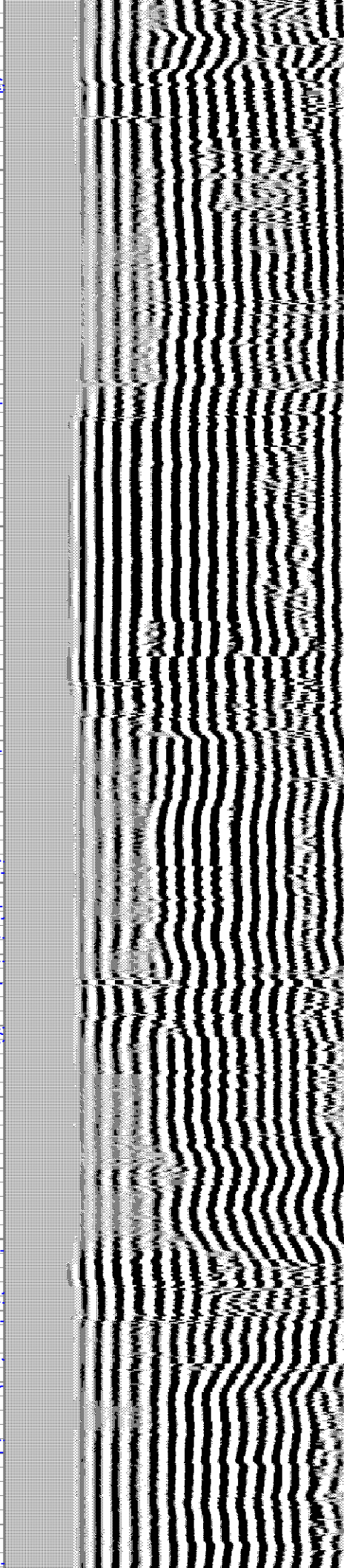
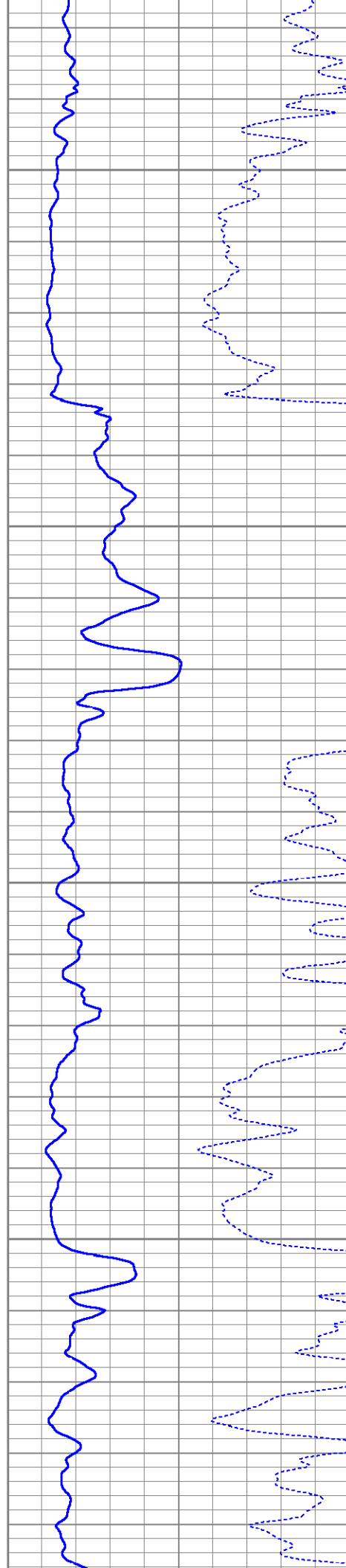
5300

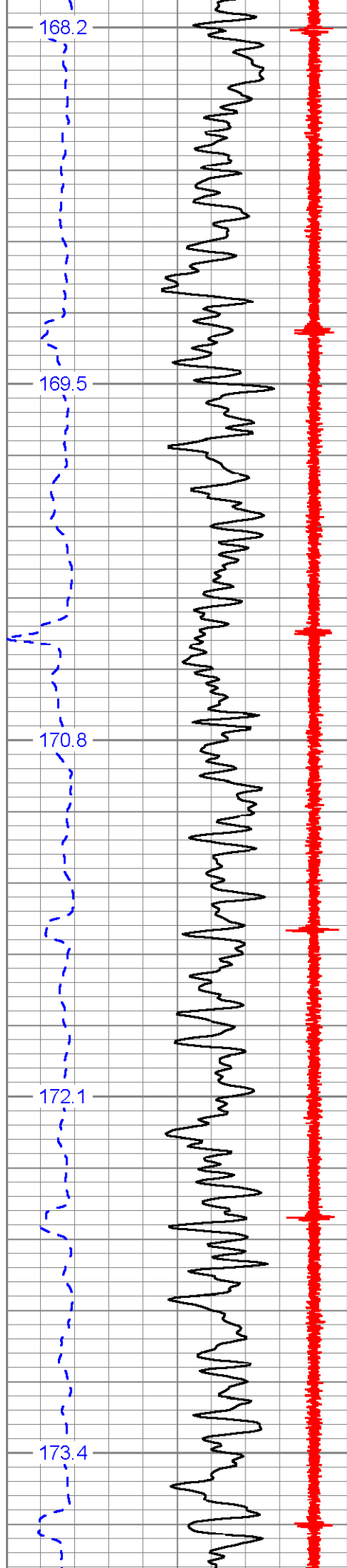




5400

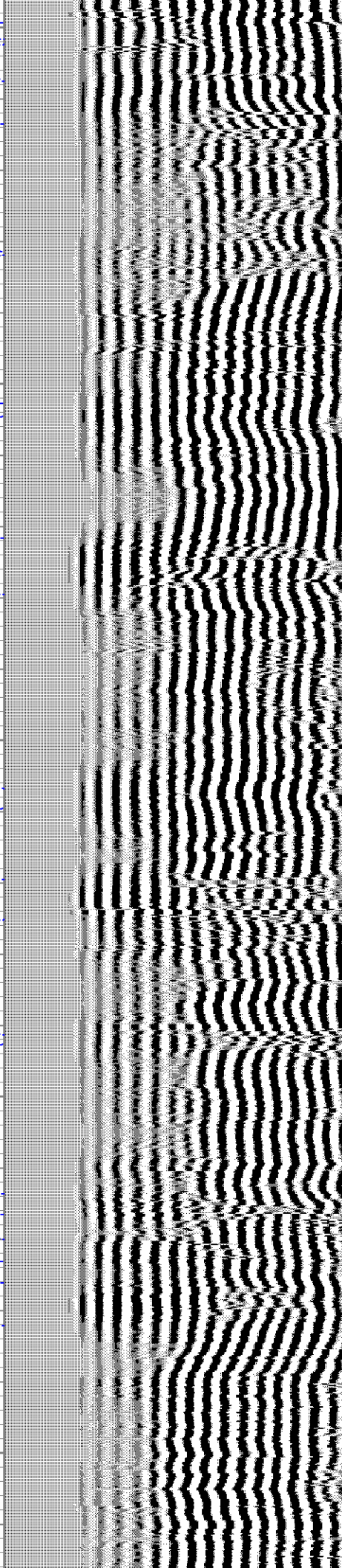
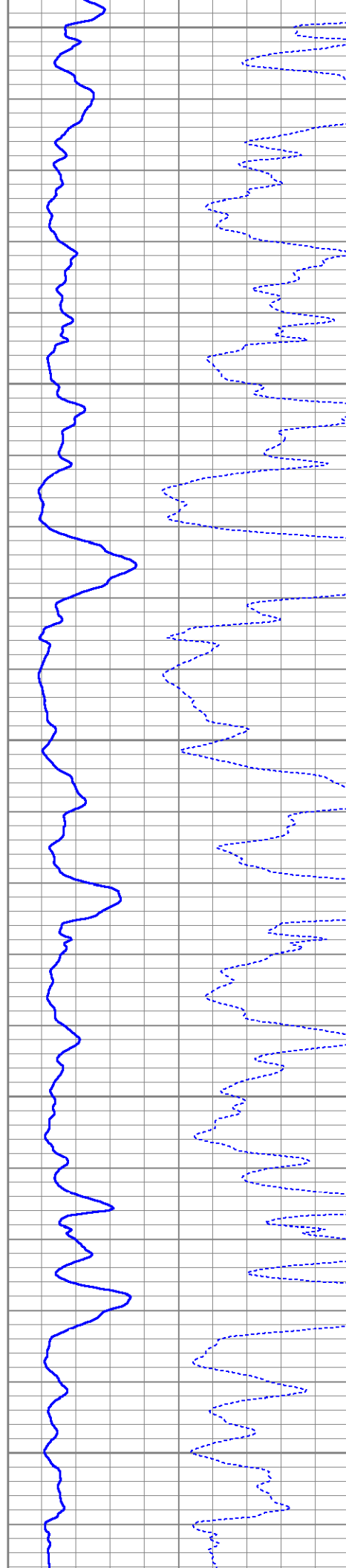
5500

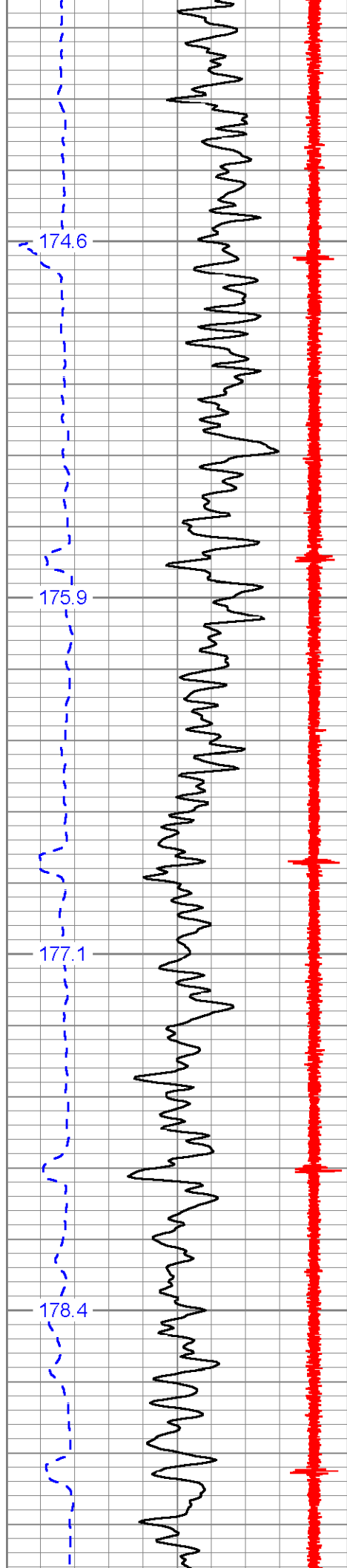




5600

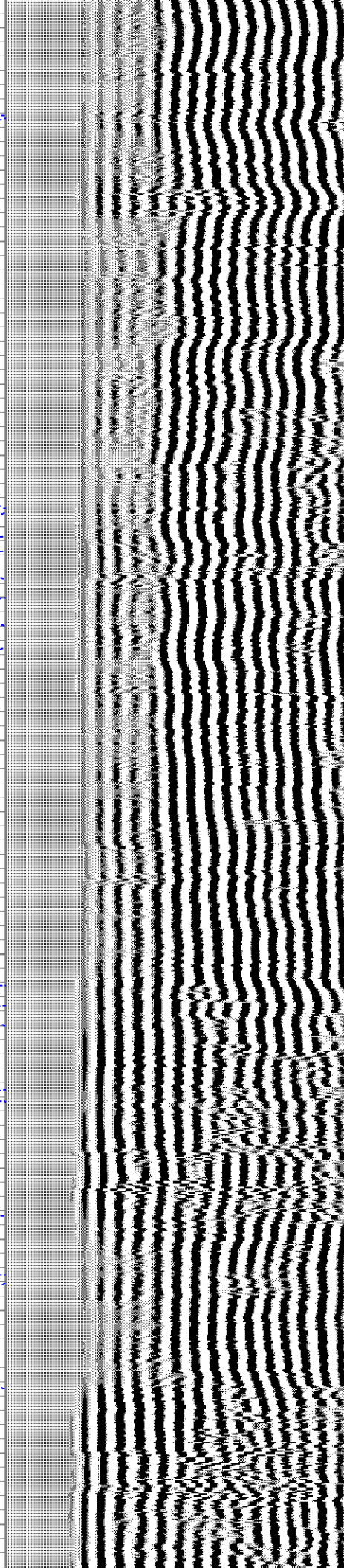
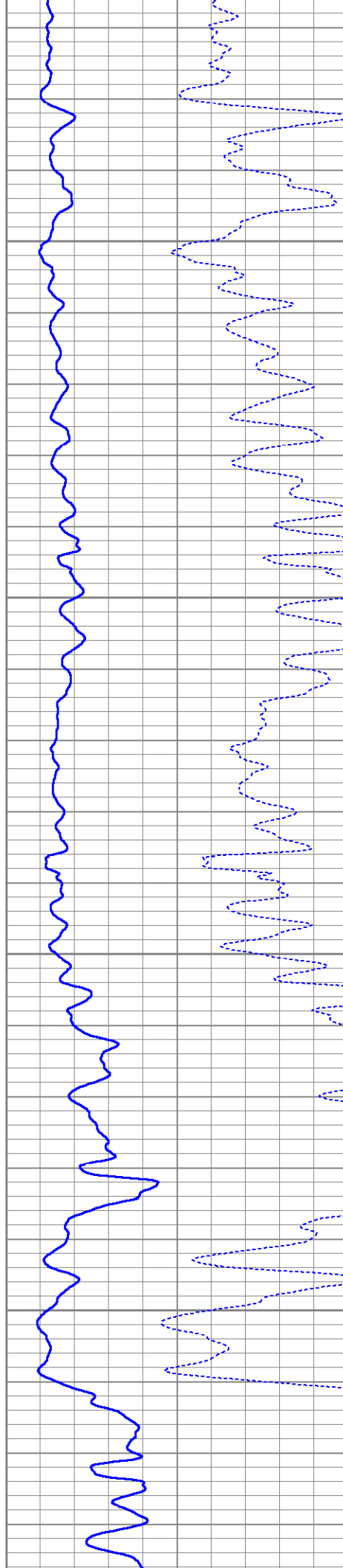
5700

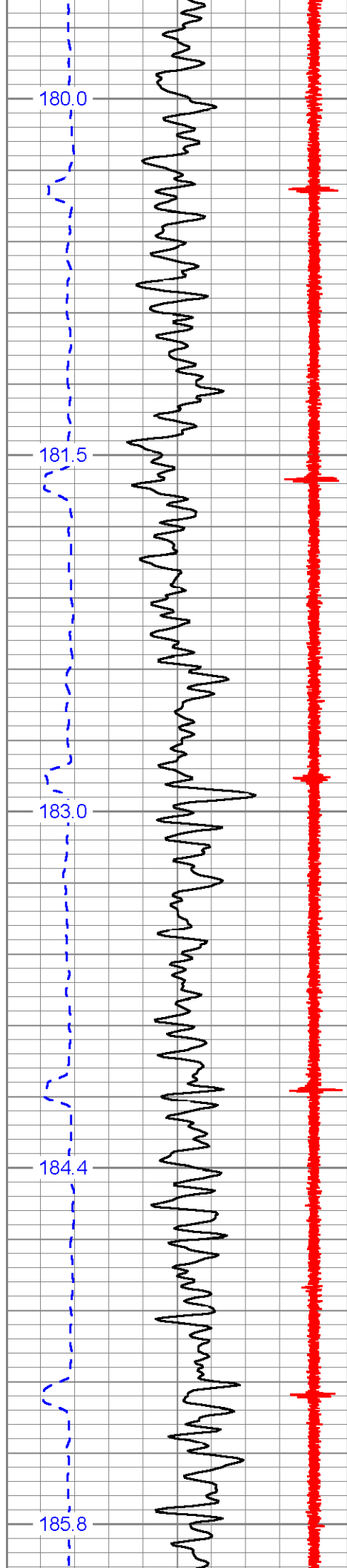




5800

5900

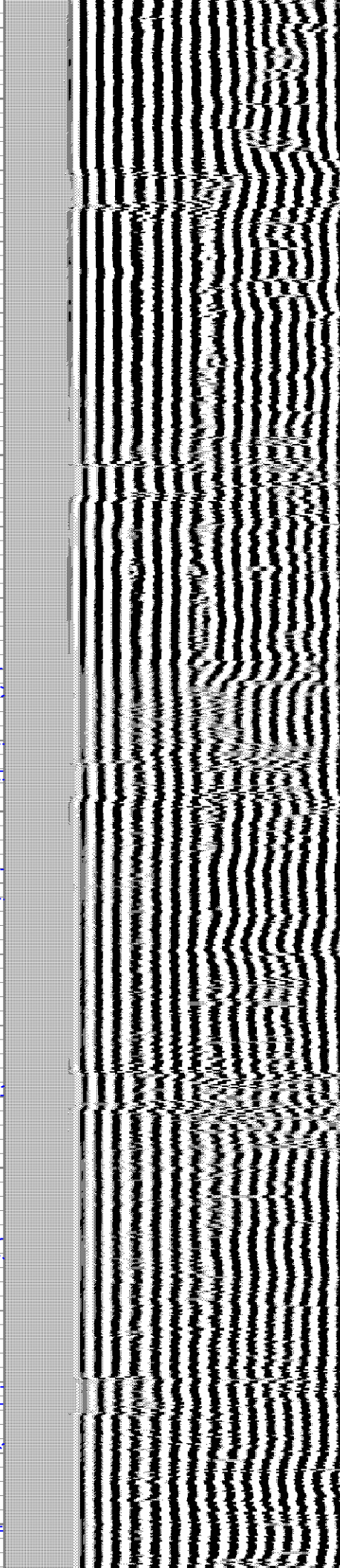
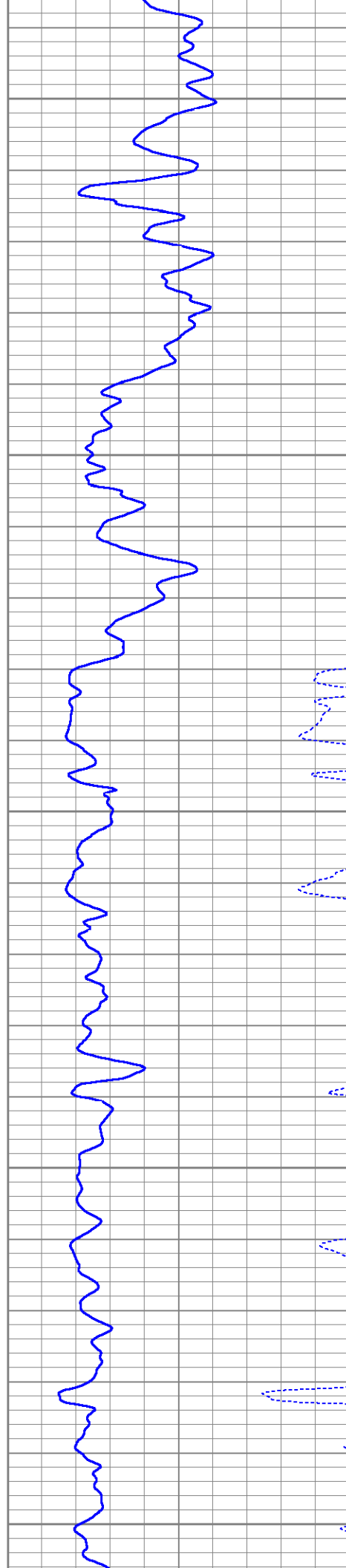


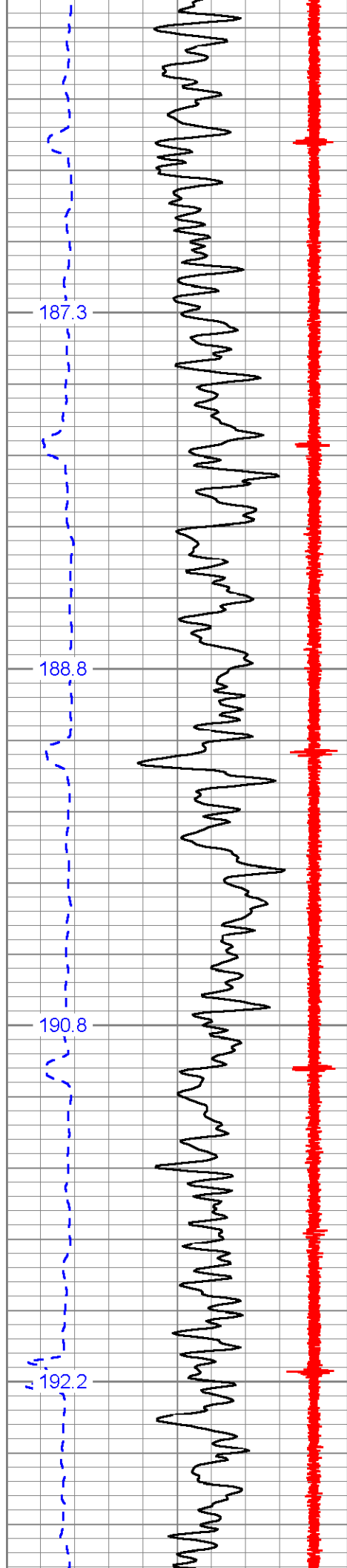


6000

6100

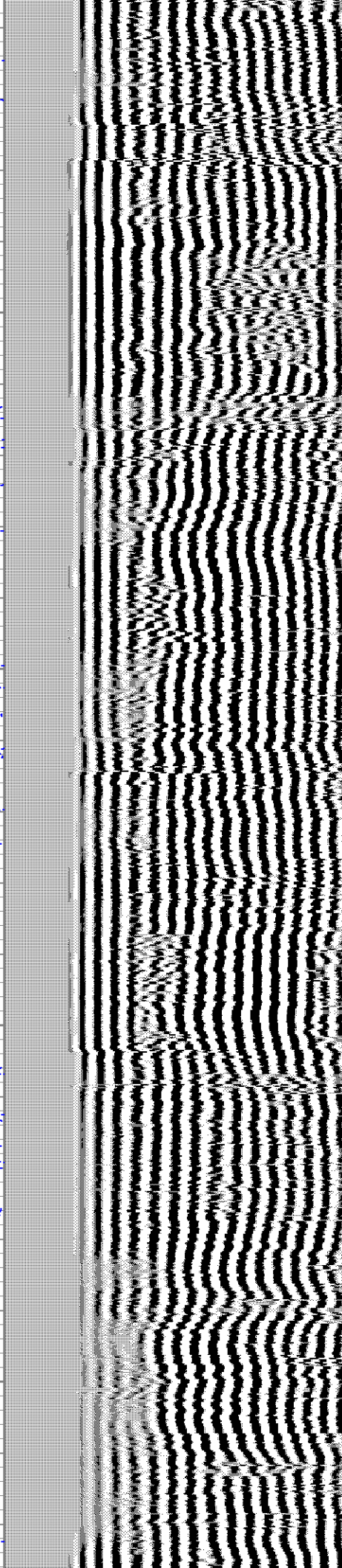
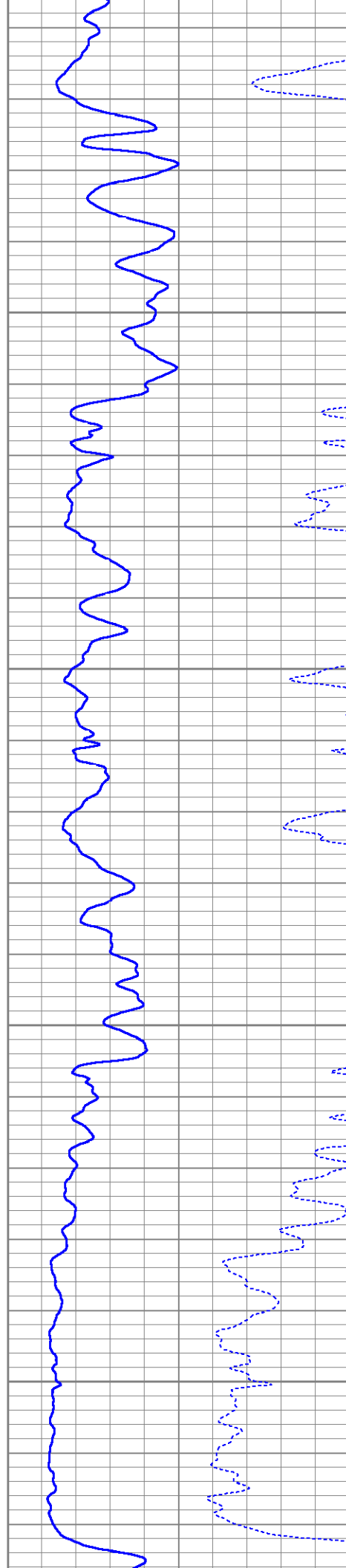
6200

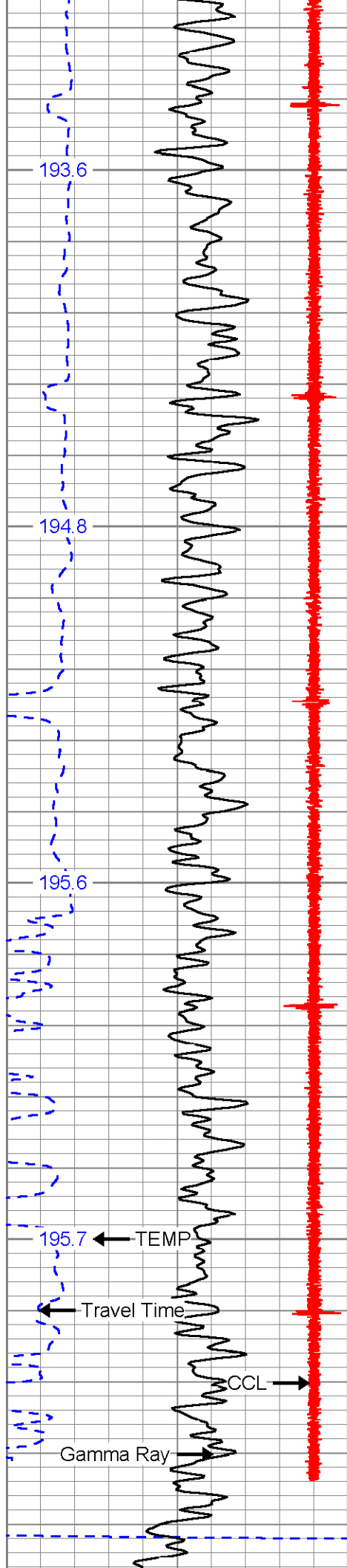




6300

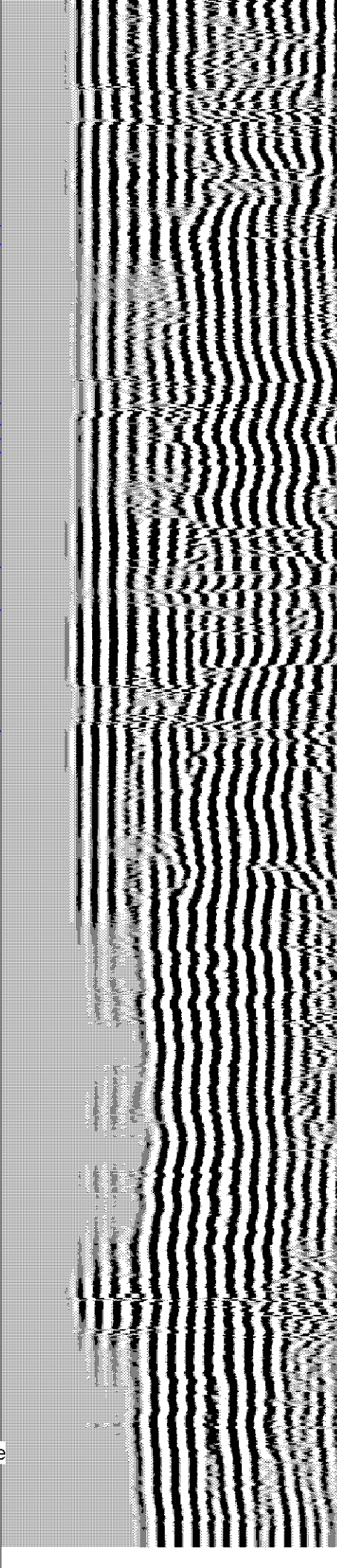
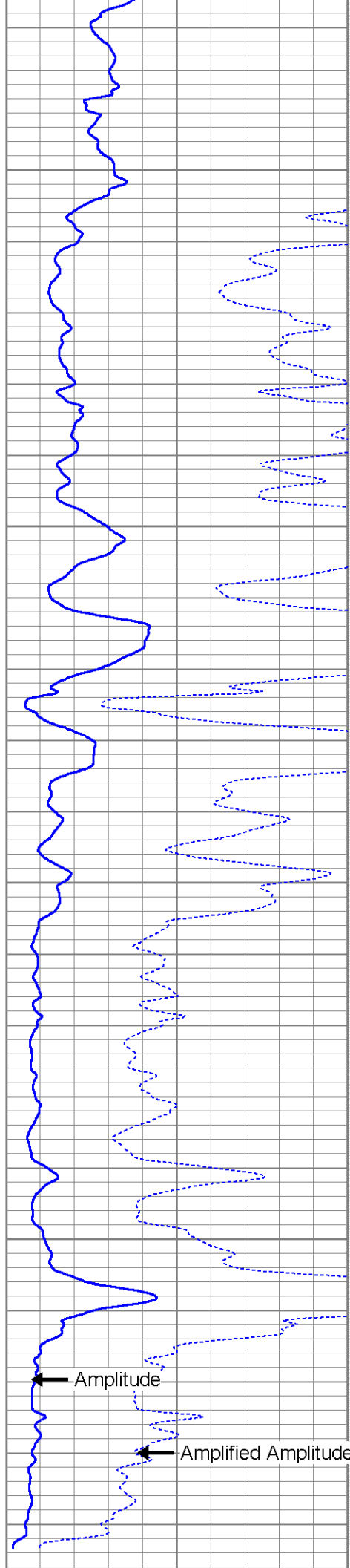
6400





6500

6600



285	Travel Time (usec)	185
-9	CCL	1
0	Gamma Ray (cps)	150
TEMP		
(degF)		

0	Amplitude (mV)	100
0	Amplified Amplitude (mV)	20

200 Variable Density 1200



MAIN PASS

LOWER SECTION



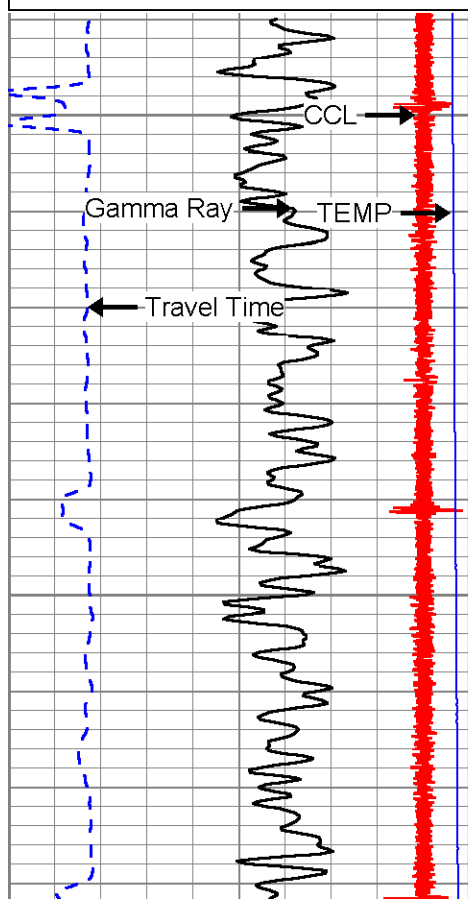
REPEAT PASS

Database File: crittercreek17.db
Dataset Pathname: pass4
Presentation Format: sec2cbl
Dataset Creation: Wed Jan 01 01:20:04 2003 by Log Std Casedhole 07122
Charted by: Depth in Feet scaled 1:240

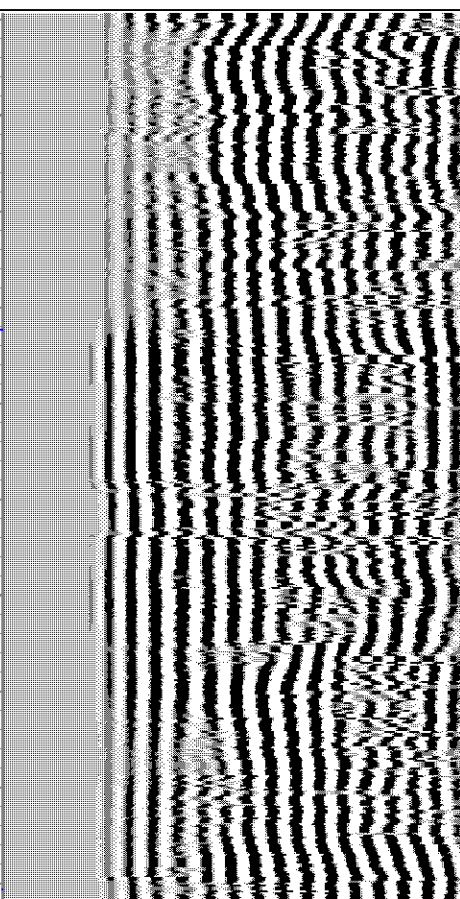
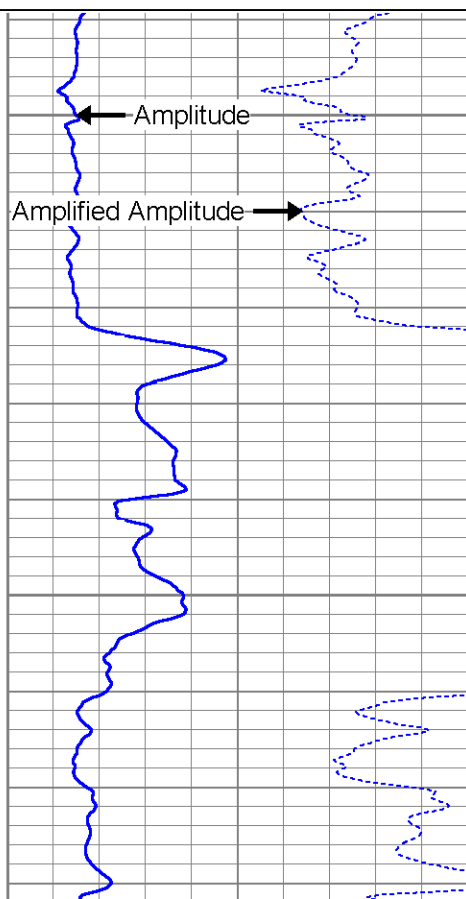
285	Travel Time (usec)	185
-9	CCL	1
0	Gamma Ray (cps)	150
0	TEMP (degF)	200

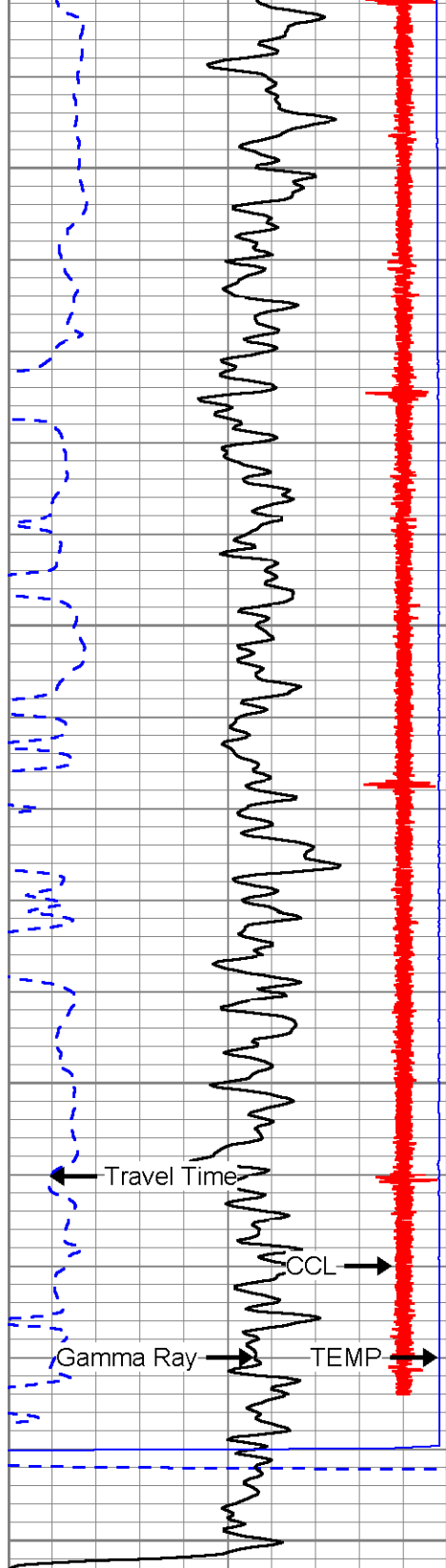
0	Amplitude (mV)	100
0	Amplified Amplitude (mV)	20

200 Variable Density 1200



6400

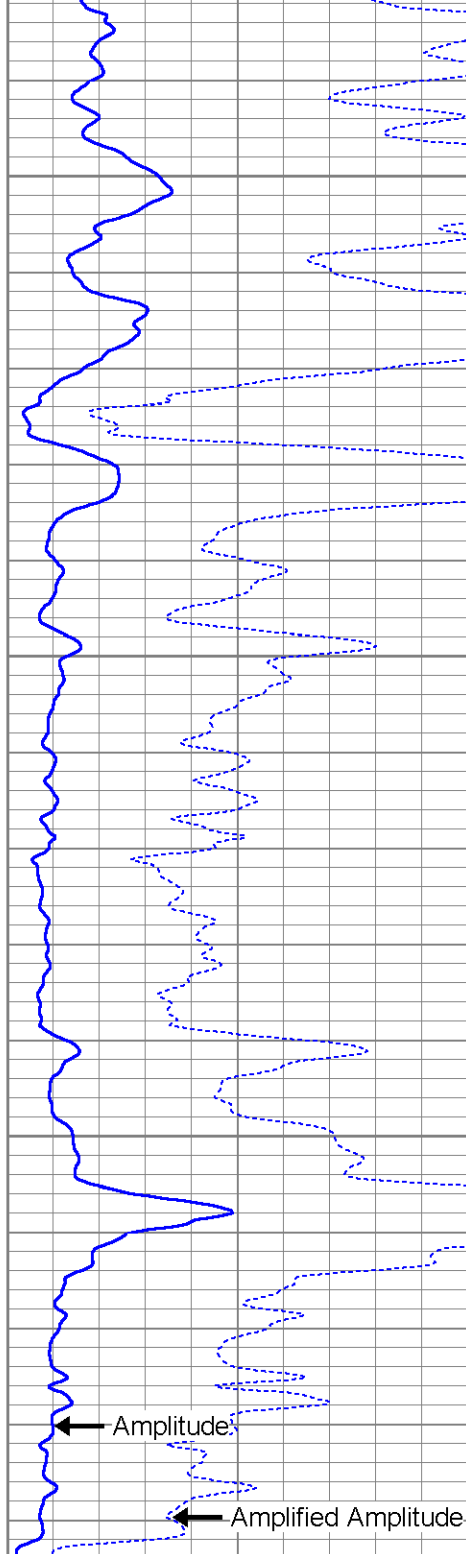




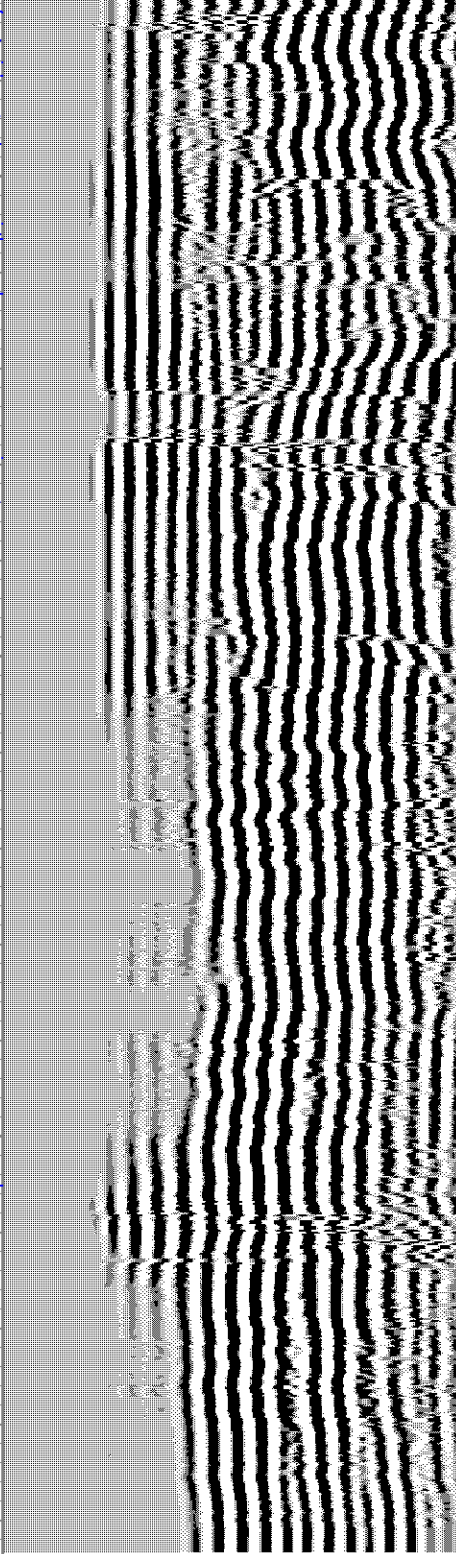
285	Travel Time (usec)	185
-9	CCL	1
0	Gamma Ray (cps)	150
0	TEMP (degF)	200

6500

6600



0	Amplitude (mV)	100
0	Amplified Amplitude (mV)	20



200	Variable Density	1200
-----	------------------	------

REPEAT PASS



Calibration Report

Database File: crittercreek17.db
 Dataset Pathname: pass7
 Dataset Creation: Wed Jan 01 02:14:22 2003 by Log Std Casedhole 07122

Gamma Ray Calibration Report

Serial Number: 2.75HT
 Tool Model: MTEKCOHT
 Performed: Sun Jun 13 13:33:21 1993

Calibrator Value: 1.0 cps

Background Reading: 0.0 cps
 Calibrator Reading: 1.0 cps

Sensitivity: 1.0000 cps/cps

Segmented Cement Bond Log Calibration Report

Serial Number: SCBLTEMP
 Tool Model: TEKSECTEMP

Calibration Casing Diameter: 7.000 in
 Calibration Depth: 206.925 ft

Master Calibration, performed Wed Jan 01 01:16:24 2003:

	Raw (v)		Calibrated (mv)		Results	
	Zero	Cal	Zero	Cal	Gain	Offset
3'	-0.003	0.153	1.000	62.165	393.592	1.985
CAL	-0.002	0.331				
5'	-0.003	0.054	1.000	62.165	1072.714	3.959
SUM						
S1	-0.003	0.259	0.000	100.000	382.125	0.984
S2	-0.003	0.144	0.000	100.000	681.871	1.740
S3	-0.003	0.201	0.000	100.000	491.363	1.266
S4	-0.003	0.502	0.000	100.000	198.047	0.551
S5	-0.002	0.682	0.000	100.000	146.142	0.357
S6	-0.002	0.550	0.000	100.000	181.159	0.451
S7	-0.003	0.274	0.000	100.000	361.758	0.923
S8	-0.003	0.231	0.000	100.000	428.474	1.114

Internal Reference Calibration, performed Wed Jan 01 01:51:49 2003:

	Raw (v)		Calibrated (v)		Results	
	Zero	Cal	Zero	Cal	Gain	Offset
CAL	0.000	0.000	-0.002	0.331	1.000	0.000

Air Zero Calibration, performed Wed Jan 01 00:21:41 2003:

	Raw (v)		Calibrated (v)		Results	
	Zero		Zero		Offset	
3'	0.000		0.000		0.000	
5'	0.000		0.000		0.000	
SUM						
S1	0.000		0.000		0.000	
S2	0.000		0.000		0.000	
S3	0.000		0.000		0.000	

S3	0.000	0.000	0.000
S4	0.000	0.000	0.000
S5	0.000	0.000	0.000
S6	0.000	0.000	0.000
S7	0.000	0.000	0.000
S8	0.000	0.000	0.000

Temperature Calibration Report

Serial Number: SCBLTEMP
Tool Model: TEKSECTEMP
Performed: Mon Nov 12 07:07:39 2007

	Reference	Reading
Low Reference:	0.00 degF	0.00 usec
High Reference:	1.00 degF	1.00 usec

Gain: 0.33
Offset: -30.00
Delta Spacing 1



Company: EOG RESOURCES
Well: CRITTER CREEK 17-21H
Field: CRITTER CREEK
County: WELD
State: CO