
LARAMIE ENERGY II LLC EBUSINESS

**KNOX 03-09B
GARDN VALLEY
Garfield County , Colorado**

Cement Production Casing
07-Dec-2009

Post Job Summary

The Road to Excellence Starts with Safety

Sold To #: 344919	Ship To #: 2755771	Quote #:	Sales Order #: 7033852
Customer: LARAMIE ENERGY II LLC EBUSINESS		Customer Rep: CLAUSSEN, KELLY	
Well Name: KNOX		Well #: 03-09B	API/UWI #: 05-045-18851
Field: GARDN VALLEY	City (SAP): PARACHUTE	County/Parish: Garfield	State: Colorado
Contractor: GREYWOLF 706		Rig/Platform Name/Num: GREYWOLF 706	
Job Purpose: Cement Production Casing			
Well Type: Development Well		Job Type: Cement Production Casing	
Sales Person: METLI, MARSHALL		Srvc Supervisor: PHILLIPS, MARK	MBU ID Emp #: 445272

Job Personnel

HES Emp Name	Exp Hrs	Emp #	HES Emp Name	Exp Hrs	Emp #	HES Emp Name	Exp Hrs	Emp #
MAIN, CHAD R	6	335770	PHILLIPS, MARK Bejar	6	445272	SMITH, CHRISTOPHER Scott	6	452619
SULLENBERGER, KYLE A	6	387409	TRIPLETT, MICHEAL Anthony	6	447908			

Equipment

HES Unit #	Distance-1 way	HES Unit #	Distance-1 way	HES Unit #	Distance-1 way	HES Unit #	Distance-1 way

Job Hours

Date	On Location Hours	Operating Hours	Date	On Location Hours	Operating Hours	Date	On Location Hours	Operating Hours
12-07-09	5	2						

TOTAL Total is the sum of each column separately

Job

Job Times

Formation Name	Formation Depth (MD)	Top	Bottom	Called Out	Date	Time	Time Zone
					07 - Dec - 2009	12:30	MST
Form Type			BHST	On Location	07 - Dec - 2009	18:00	MST
Job depth MD	5445. ft		Job Depth TVD	5445. ft	Job Started	07 - Dec - 2009	20:25
Water Depth			Wk Ht Above Floor	3. ft	Job Completed	07 - Dec - 2009	21:41
Perforation Depth (MD)	<i>From</i>		<i>To</i>		Departed Loc	08 - Dec - 2009	01:30

Well Data

Description	New / Used	Max pressure psig	Size in	ID in	Weight lbm/ft	Thread	Grade	Top MD ft	Bottom MD ft	Top TVD ft	Bottom TVD ft

Sales/Rental/3rd Party (HES)

Description	Qty	Qty uom	Depth	Supplier
PLUG,CMTG, TOP, 4 1/2, HWE, 3.65 MIN/4.14 MA	1	EA		
PORT. DAS W/CEMWIN; ACQUIRE W/HES, ZI	1	JOB		
ADC (AUTO DENSITY CTRL) SYS, /JOB, ZI	1	JOB		

Tools and Accessories

Type	Size	Qty	Make	Depth	Type	Size	Qty	Make	Depth	Type	Size	Qty	Make
Guide Shoe					Packer					Top Plug	4.5	1	HES
Float Shoe					Bridge Plug					Bottom Plug			
Float Collar					Retainer					SSR plug set			
Insert Float										Plug Container	4.5	1	HES
Stage Tool										Centralizers			

Miscellaneous Materials

Gelling Agt	Conc	Surfactant	Conc	Acid Type	Qty	Conc %
Treatment Fld	Conc	Inhibitor	Conc	Sand Type	Size	Qty

Fluid Data									
Stage/Plug #: 1									
Fluid #	Stage Type	Fluid Name	Qty	Qty uom	Mixing Density lbm/gal	Yield ft ³ /sk	Mix Fluid Gal/sk	Rate bbl/min	Total Mix Fluid Gal/sk
1	H2O SPACER		10	bbl	8.33	.0	.0	.0	
2	MUD FLUSH III	MUD FLUSH III - SBM (528788)	20	bbl	8.4	.0	.0	.0	
3	H2O SPACER		10	bbl	8.33	.0	.0	.0	
4	Lead Cement	ECONOCEM (TM) SYSTEM (452992)	275	sacks	11.0	2.75	16.31		
	13.06 Gal	FRESH WATER							
5	Tail Cement	VARICEM (TM) CEMENT (452009)	400	sacks	13.5	1.49	6.49	6.0	
6	KCL Displacement		83.7	bbl	8.4	.0	.0	.0	
Calculated Values		Pressures		Volumes					
Displacement	83.7	Shut In: Instant		Lost Returns	0	Cement Slurry	240.8	Pad	
Top Of Cement	SURFACE	5 Min		Cement Returns	0	Actual Displacement	83.7	Treatment	
Frac Gradient		15 Min		Spacers	40	Load and Breakdown		Total Job	365
Rates									
Circulating	8	Mixing	7	Displacement	9	Avg. Job	6		
Cement Left In Pipe	Amount	42 ft	Reason	Shoe Joint					
Frac Ring # 1 @	ID	Frac ring # 2 @	ID	Frac Ring # 3 @	ID	Frac Ring # 4 @	ID		
The Information Stated Herein Is Correct				Customer Representative Signature					

The Road to Excellence Starts with Safety

Sold To #: 344919	Ship To #: 2755771	Quote #:	Sales Order #: 7033852
Customer: LARAMIE ENERGY II LLC EBUSINESS		Customer Rep: CLAUSSEN, KELLY	
Well Name: KNOX		Well #: 03-09B	API/UWI #: 05-045-18851
Field: GARDN VALLEY	City (SAP): PARACHUTE	County/Parish: Garfield	State: Colorado
Legal Description:			
Lat: N 0 deg. OR N 0 deg. 0 min. 0 secs.		Long: E 0 deg. OR E 0 deg. 0 min. 0 secs.	
Contractor: GREYWOLF 706		Rig/Platform Name/Num: GREYWOLF 706	
Job Purpose: Cement Production Casing			Ticket Amount:
Well Type: Development Well		Job Type: Cement Production Casing	
Sales Person: METLI, MARSHALL		Srvc Supervisor: PHILLIPS, MARK	MBU ID Emp #: 445272

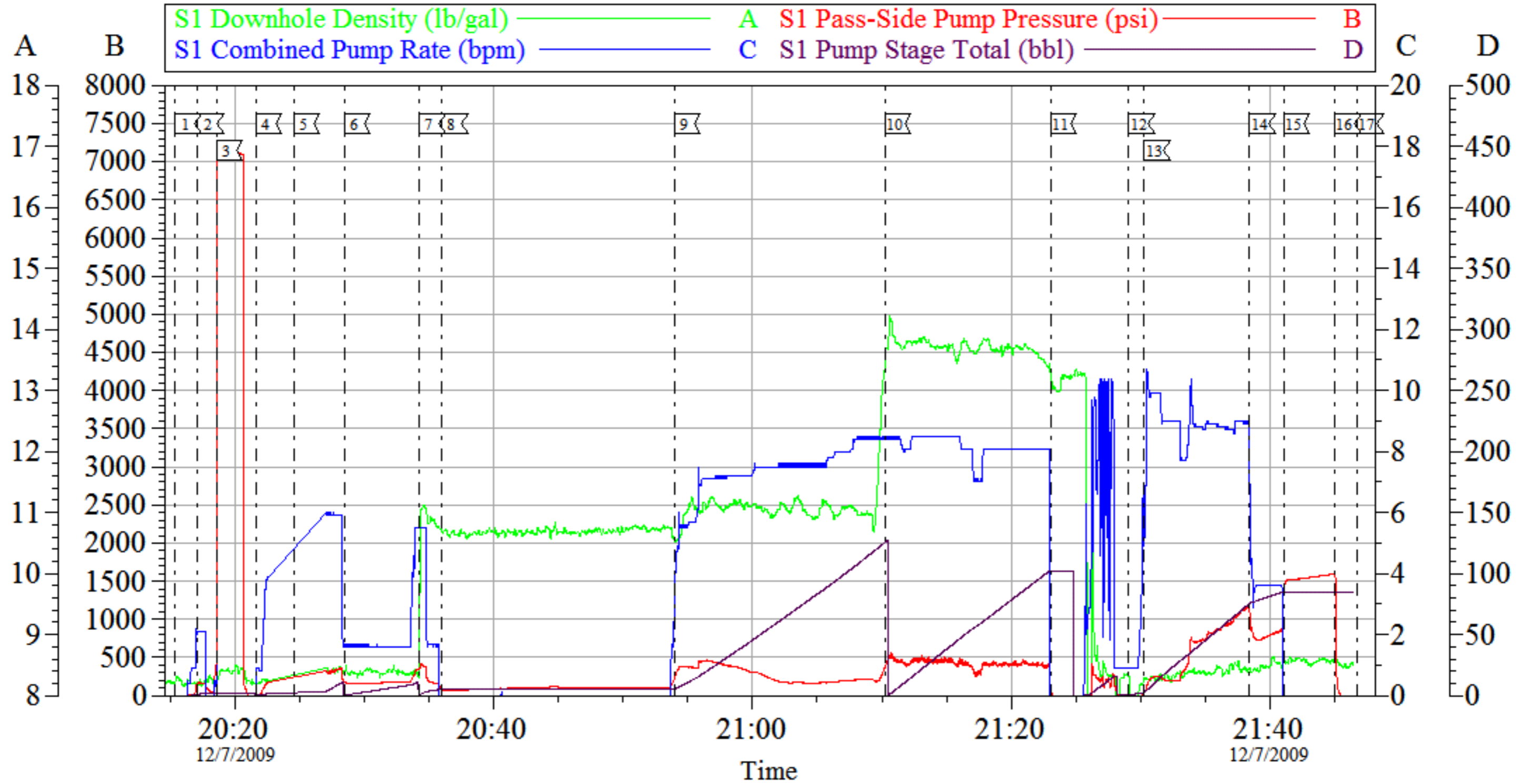
Activity Description	Date/Time	Cht #	Rate bbl/min	Volume bbl		Pressure psig		Comments
				Stage	Total	Tubing	Casing	
Call Out	12/07/2009 12:30							
Pre-Convoy Safety Meeting	12/07/2009 16:30							ALL HES EMPLOYEES
Arrive At Loc	12/07/2009 18:00							RIG STILL RUNNING CASING
Assessment Of Location Safety Meeting	12/07/2009 18:15							ALL HES EMPLOYEES
Rig-Up Equipment	12/07/2009 18:30							1 HT 400 PUMP TRUCK, 2 660 BULK TRUCK, 1 4.5 QUICK LATCH PLUG CONTAINER, 1 F 450 P/U, 1 BODY LOAD
Pre-Job Safety Meeting	12/07/2009 20:00							ALL HES EMPLOYEES, RIG CREW, CO REP.
Start Job	12/07/2009 20:15							SP 840', TD 5445', TP 5441', FC 5399', HOLE 7.875", MUD WT 9.4 PPG, SJ 42', 800 BBLS OF H2O ON LOCATION, WATER SAMPLE SUBMITTED.
Pump Water	12/07/2009 20:17		1	2			178.0	FILL LINES
Pressure Test	12/07/2009 20:18		0.5				7100.0	NO LEAKS
Pump Spacer 1	12/07/2009 20:22		6	10			200.0	FRESH WATER
Pump Spacer 2	12/07/2009 20:24		6	10			299.0	MUD FLUSH
Pump Spacer 1	12/07/2009 20:28		2	20			189.0	FRESH WATER

Activity Description	Date/Time	Cht #	Rate bbl/min	Volume bbl		Pressure psig		Comments
				Stage	Total	Tubing	Casing	
Pump Lead Cement	12/07/2009 20:34		7	134.7			460.0	275 SKS ECONOCEM TO BE MIXED AT 11.0 PPG, 2.75 YIELD, 16.31 GAL/SK, CMT TO BE WEIGHED VIA PRESSURE BALANCED MUD SCALES, WET AND DRY SAMPLES SUBMITTED
Shutdown	12/07/2009 20:35							SHUT DOWN DUE TO CEMENT PACKING OFF AT TEE, SHUT DOWN LASTED FOR NO MORE THEN 10 MINS, RESUMED PUMPING WITHOUT ANY FURTHER PROBLEMS.
Pump Tail Cement	12/07/2009 21:11		8	106.1			409.0	400 SKS VARICEM CCMT TO BE MIXED AT 13.5 PPG, 1.49 YIELD, 6.49 GAL/SK, CMT TO BE WEIGHED VIA PRESSURE BALANCED MUD SCALES. WET AND DRY SAMPLES SUBMITTED.
Shutdown	12/07/2009 21:24							FOR NO MORE THEN 5 MINUTES,
Clean Lines	12/07/2009 21:25							NO MORE THEN 5 MINUTES. TO PIT
Drop Plug	12/07/2009 21:29							PLUG LAUNCH
Pump Displacement	12/07/2009 21:30		9	83.7			930.0	KCL WATER 1 BAGS PER TANK, USE BE-6 IN FIRST 3 TANKS.
Slow Rate	12/07/2009 21:39		4	73			827.0	10 BBLS PRIOR TO CALCULATED DISPLACEMENT
Bump Plug	12/07/2009 21:41		4	83.7			1500.0	PLUG LANDED HOLD FOR TWO MINUTES
Check Floats	12/07/2009 21:43							FLOATS HOLDING, NO ANNULAR FLOW AT SHAKERS NOTED

Activity Description	Date/Time	Cht #	Rate bbl/ min	Volume bbl		Pressure psig		Comments
				Stage	Total	Tubing	Casing	
End Job	12/07/2009 21:44							THANK YOU FOR USING HES FROM MARK PHILLIPS AND CREW.
Post-Job Safety Meeting (Pre Rig-Down)	12/07/2009 21:50							ALL HES EMPLOYEES
Rig-Down Equipment	12/07/2009 23:30							SAFELY
Pre-Convoy Safety Meeting	12/07/2009 23:45							ALL HES EMPLOYEES
Crew Leave Location	12/08/2009 01:30							SITE WAS AS CLEAN AS WHEN WE ARRIVED

LARAMIE II PRODUCTION KNOX 03-09B

GREYWOLF 706



Local Event Log								
1	START JOB	20:15:22	2	FILL LINES	20:17:06	3	PRESSURE TEST	20:18:33
4	H2O SPACER	20:21:35	5	MUD FLUSH SPACER	20:24:31	6	H2O SPACER	20:28:27
7	LEAD CEMENT	20:34:13	8	SHUT DOWN FIX CEMENT LINE	20:35:57	9	LINE FIXED RESUME PUMPING	20:53:58
10	TAIL CEMENT	21:10:15	11	SHUT DOWN/WASH LINES	21:23:04	12	DROP PLUG	21:29:06
13	START DISPLACEMENT	21:30:18	14	SLOW RATE	21:38:26	15	BUMP PLUG	21:41:05
16	CHECK FLOATS	21:45:01	17	END JOB	21:46:45			

Customer: LARAMIE II	Job Date: 07-Dec-2009	Sales Order #: 7033852
Well Description: KNOX 03-09B	Job Type: PRODUCTION	ADC Used: YES
Company Rep: KELLY CLAUSSEN	Cement Supervisor: MARK PHILLIPS	Elite #2: CHRIS SMITH