
LARAMIE ENERGY II LLC EBUSINESS

**KNOX 03-09B
GARDN VALLEY
Garfield County , Colorado**

Cement Surface Casing
03-Dec-2009

Post Job Summary

The Road to Excellence Starts with Safety

Sold To #: 344919		Ship To #: 2755771		Quote #:		Sales Order #: 7033789	
Customer: LARAMIE ENERGY II LLC EBUSINESS				Customer Rep: Claussen, Cory			
Well Name: Knox			Well #: 03-09B		API/UWI #:		
Field: PICEANCE		City (SAP): RIFLE		County/Parish: Garfield		State: Colorado	
Contractor: Precision			Rig/Platform Name/Num: Precision 706				
Job Purpose: Cement Surface Casing							
Well Type: Development Well				Job Type: Cement Surface Casing			
Sales Person: METLI, MARSHALL			Srvc Supervisor: BRADY, JERED		MBU ID Emp #: 213392		

Job Personnel

HES Emp Name	Exp Hrs	Emp #	HES Emp Name	Exp Hrs	Emp #	HES Emp Name	Exp Hrs	Emp #
BRADY, JERED Austin	4	213392	BROWN, TRAVIS A	4	396848	BRUN, JUSTIN M	4	459269
SMITH, DUSTIN Michael	4	418015						

Equipment

HES Unit #	Distance-1 way	HES Unit #	Distance-1 way	HES Unit #	Distance-1 way	HES Unit #	Distance-1 way
10297346	85 mile	10616651C	85 mile	10995025	85 mile	11071559	85 mile
11259886	85 mile						

Job Hours

Date	On Location Hours	Operating Hours	Date	On Location Hours	Operating Hours	Date	On Location Hours	Operating Hours
12/3/09	4	1						

TOTAL *Total is the sum of each column separately*

Job

Job Times

Formation Name	Formation Depth (MD)	Top	Bottom	Called Out	Date	Time	Time Zone
					02 - Dec - 2009	19:00	MST
Form Type			BHST	On Location	02 - Dec - 2009	21:30	MST
Job depth MD	800. ft		Job Depth TVD	800. ft	Job Started	12/2/2009	2345 MST
Water Depth			Wk Ht Above Floor		Job Completed	12/3/09	0031 MST
Perforation Depth (MD)	From		To		Departed Loc	12/3/09	0200 MST

Well Data

Description	New / Used	Max pressure psig	Size in	ID in	Weight lbm/ft	Thread	Grade	Top MD ft	Bottom MD ft	Top TVD ft	Bottom TVD ft
OPEN HOLE				12.25				.	840.	.	
SURFACE CASING	Unknown		8.625	7.921	32.			.	844.		

Sales/Rental/3rd Party (HES)

Description	Qty	Qty uom	Depth	Supplier
PLUG,CMTG, TOP, 8 5/8, HWE, 7.20 MIN/8.09 MA	1	EA		
PORT. DAS W/CEMWIN; ACQUIRE W/HES, ZI	1	JOB		
ADC (AUTO DENSITY CTRL) SYS, /JOB, ZI	1	JOB		

Tools and Accessories

Type	Size	Qty	Make	Depth	Type	Size	Qty	Make	Depth	Type	Size	Qty	Make
Guide Shoe					Packer					Top Plug	8 5/8		
Float Shoe					Bridge Plug					Bottom Plug			
Float Collar					Retainer					SSR plug set			
Insert Float										Plug Container			
Stage Tool										Centralizers			

Miscellaneous Materials

Gelling Agt	Conc	Surfactant	Conc	Acid Type	Qty	Conc	%
Treatment Fld	Conc	Inhibitor	Conc	Sand Type	Size	Qty	

Fluid Data										
Stage/Plug #: 1										
Fluid #	Stage Type	Fluid Name	Qty	Qty uom	Mixing Density lbm/gal	Yield ft ³ /sk	Mix Fluid Gal/sk	Rate bbl/min	Total Mix Fluid Gal/sk	
1	WATER SPACER		20.00	bbl	.	.0	.0	.0		
2	Lead Cement	VERSACEM (TM) SYSTEM (452010)	100.0	sacks	12.3	2.37	13.76		13.42	
	13.418 Gal	FRESH WATER								
3	Tail Cement	VERSACEM (TM) SYSTEM (452010)	205.0	sacks	14.2	1.51	7.53		7.53	
	7.52 Gal	FRESH WATER								
4	DISPLACEMENT		50.00	bbl	.	.0	.0	.0		
Calculated Values		Pressures			Volumes					
Displacement	49.7	Shut In: Instant		Lost Returns		Cement Slurry	97	Pad		
Top Of Cement		5 Min		Cement Returns	11	Actual Displacement	49.7	Treatment		
Frac Gradient		15 Min		Spacers		Load and Breakdown		Total Job		
Rates										
Circulating		Mixing	7	Displacement	10	Avg. Job			7.5	
Cement Left In Pipe	Amount	0 ft	Reason	Shoe Joint						
Frac Ring # 1 @	ID	Frac ring # 2 @	ID	Frac Ring # 3 @	ID	Frac Ring # 4 @	ID			
The Information Stated Herein Is Correct				Customer Representative Signature						

The Road to Excellence Starts with Safety

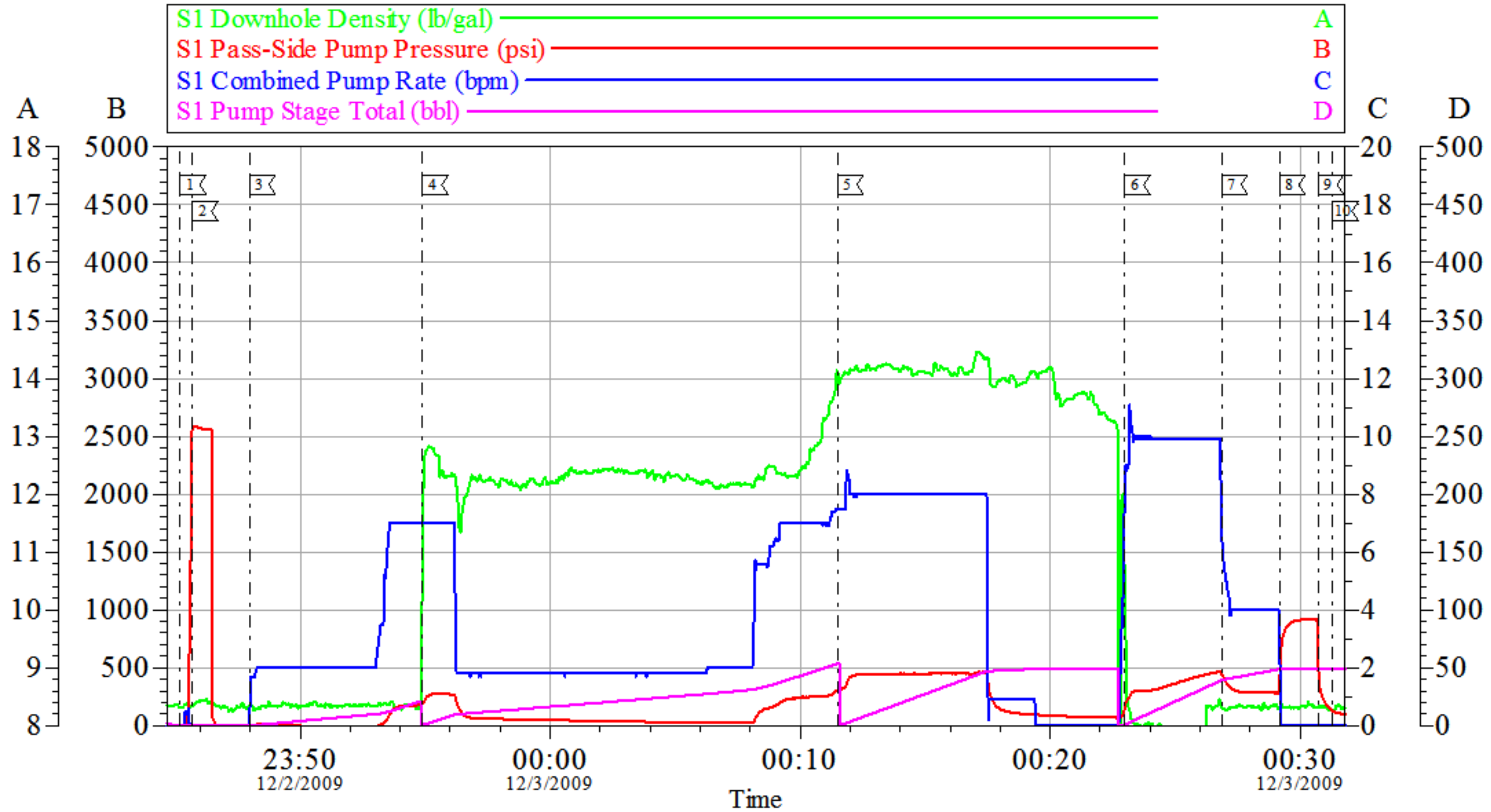
Sold To #: 344919	Ship To #: 2755771	Quote #:	Sales Order #: 7033789
Customer: LARAMIE ENERGY II LLC EBUSINESS		Customer Rep: Claussen, Cory	
Well Name: Knox		Well #: 03-09B	API/UWI #:
Field: PICEANCE	City (SAP): RIFLE	County/Parish: Garfield	State: Colorado
Legal Description:			
Lat: N 0 deg. OR N 0 deg. 0 min. 0 secs.		Long: E 0 deg. OR E 0 deg. 0 min. 0 secs.	
Contractor: Precision		Rig/Platform Name/Num: Precision 706	
Job Purpose: Cement Surface Casing			Ticket Amount:
Well Type: Development Well		Job Type: Cement Surface Casing	
Sales Person: METLI, MARSHALL		Srvc Supervisor: BRADY, JERED	MBU ID Emp #: 213392

Activity Description	Date/Time	Cht #	Rate bbl/min	Volume bbl		Pressure psig		Comments
				Stage	Total	Tubing	Casing	
Comment	12/02/2009 00:00							COMPRESSOR WENT OUT ON BULK TRUCK HAD TO SWAP TO RIG AIR IN THE MIDDLE OF PUMPING CEMENT BUT NEVER HAD TO SHUT DOWN JUST SLOWED RATE.
Pump Tail Cement	12/02/2009 00:11		7	55			300.0	205 SKS, 14.2, 1.51 CUFT/SK, 7.53 GAL/SK
Shutdown	12/02/2009 00:20							
Pump Displacement	12/02/2009 00:22		10				300.0	
Drop Top Plug	12/02/2009 00:22							
Slow Rate	12/02/2009 00:26		4	39.7			340.0	
Bump Plug	12/02/2009 00:29		4	49.7			890.0	11 BBLs TO SURFACE
Check Floats	12/02/2009 00:30							FLOATS HELD, 1/2 BBL BACK
End Job	12/02/2009 00:31							
Pre-Rig Down Safety Meeting	12/02/2009 00:40							ALL HES PERSONEL
Rig-Down Completed	12/02/2009 01:30							
Pre-Convoy Safety Meeting	12/02/2009 01:45							ALL HES PERSONEL
Crew Leave Location	12/02/2009 02:00							
Pre-Convoy Safety Meeting	12/02/2009 18:50							ALL HES PERSONEL

Activity Description	Date/Time	Cht #	Rate bbl/min	Volume bbl		Pressure psig		Comments
				Stage	Total	Tubing	Casing	
Call Out	12/02/2009 19:00							
Crew Leave Yard	12/02/2009 20:00							
Arrive At Loc	12/02/2009 21:30							
Assessment Of Location Safety Meeting	12/02/2009 21:40							ALL HES PERSONEL, TD-840, TP-844, MUD-9.3, CSG-8.625 32#, HOLE-12 1/4
Pre-Rig Up Safety Meeting	12/02/2009 21:50							ALL HES PERSONEL, RIG CREW
Rig-Up Completed	12/02/2009 22:20							
Pressure Test	12/02/2009 23:45						2500.0	
Start Job	12/02/2009 23:45							FILL LINES
Pump Spacer	12/02/2009 23:47		7	20			120.0	
Pump Lead Cement	12/02/2009 23:54		7	42			100.0	100SKS, 12.3#, 2.37CUFT/SK, 13.75 GAL/SK

LARAMIE 2

8 5/8 SURFACE CASING



Local Event Log								
1	START JOB	12/2/2009 23:45:12	2	PRESSURE TEST	12/2/2009 23:45:40	3	PUMP SPACER	12/2/2009 23:47:59
4	PUMP LEAD CEMENT	12/2/2009 23:54:54	5	PUMP TAIL CEMENT	12/3/2009 00:11:30	6	DROP PLUG/PUMP DISPLACEMENT	12/3/2009 00:22:58
7	SLOW RATE	12/3/2009 00:26:52	8	BUMP PLUG	12/3/2009 00:29:11	9	CHECK FLOATS	12/3/2009 00:30:43
10	END JOB	12/3/2009 00:31:19						

Customer: LARAMIE 2	Job Date: 02-Dec-2009	Sales Order #: 7033789
Well Description: KNOX 03-09B	Job Type: SURFACE	ADC Used: YES
Company Rep: CORY CLAUSSEN	Cement Supervisor: JERED BRADY	Elite #: 4