

---

# **LARAMIE ENERGY II LLC EBUSINESS**

---

**KNOX 03-07C  
GARDN VALLEY  
Garfield County , Colorado**

## **Cement Production Casing** **15-Dec-2009**

### **Post Job Report**

## The Road to Excellence Starts with Safety

Sold To #: 344919	Ship To #: 2755772	Quote #:	Sales Order #: 7057975
Customer: LARAMIE ENERGY II LLC EBUSINESS	Customer Rep: CLAUSSEN, KELLY		
Well Name: KNOX	Well #: 03-07C	API/UWI #:	
Field: GARDN VALLEY	City (SAP): RIFLE	County/Parish: Garfield	State: Colorado
Contractor: LARAMIE II	Rig/Platform Name/Num: PRECISISON 706		
Job Purpose: Cement Production Casing			
Well Type: Development Well	Job Type: Cement Production Casing		
Sales Person: METLI, MARSHALL	Srv Supervisor: NELSON, RYAN	MBU ID Emp #:	386514

### Job Personnel

HES Emp Name	Exp Hrs	Emp #	HES Emp Name	Exp Hrs	Emp #	HES Emp Name	Exp Hrs	Emp #
ANDERSON, ADAM S	8	456683	HAYES, DIRK A	8	336768	NELSON, RYAN Cody	8	386514
SULLIVAN, MARK	8	425453						

### Equipment

HES Unit #	Distance-1 way	HES Unit #	Distance-1 way	HES Unit #	Distance-1 way	HES Unit #	Distance-1 way
10296148C	85 mile	10804567	85 mile	10856464	85 mile	10951246	85 mile
10978335	85 mile						

### Job Hours

Date	On Location Hours	Operating Hours	Date	On Location Hours	Operating Hours	Date	On Location Hours	Operating Hours
12-15-09	8	4						

**TOTAL** Total is the sum of each column separately

### Job

### Job Times

Formation Name	Formation Depth (MD)	Top	Bottom	Called Out	Date	Time	Time Zone
Form Type			BHST	On Location	15 - Dec - 2009	04:00	MST
Job depth MD	5495. ft		Job Depth TVD	Job Started	15 - Dec - 2009	10:15	MST
Water Depth			Wk Ht Above Floor	Job Completed	15 - Dec - 2009	11:30	MST
Perforation Depth (MD)	From		To	Departed Loc	15 - Dec - 2009	13:00	MST

### Well Data

Description	New / Used	Max pressure psig	Size in	ID in	Weight lbm/ft	Thread	Grade	Top MD ft	Bottom MD ft	Top TVD ft	Bottom TVD ft
Open Hole				7.875				850.	5495.		
Production Casing			4.5	4.	11.6			0	5485.		
Surface			8.625	7.921	32.			0	850.		

### Sales/Rental/3<sup>rd</sup> Party (HES)

Description	Qty	Qty uom	Depth	Supplier
PLUG,CMTG,TOP,4 1/2,HWE,3.65 MIN/4.14 MA	1	EA		
PORT. DAS W/CEMWIN;ACQUIRE W/HES, ZI	1	JOB		
ADC (AUTO DENSITY CTRL) SYS, /JOB,ZI	1	JOB		

### Tools and Accessories

Type	Size	Qty	Make	Depth	Type	Size	Qty	Make	Depth	Type	Size	Qty	Make
Guide Shoe					Packer					Top Plug	4.5	1	HES
Float Shoe					Bridge Plug					Bottom Plug			
Float Collar					Retainer					SSR plug set			
Insert Float										Plug Container	4.5	1	HES
Stage Tool										Centralizers			

### Miscellaneous Materials

Gelling Agt	Conc	Surfactant	Conc	Acid Type	Qty	Conc	%
Treatment Fld	Conc	Inhibitor	Conc	Sand Type	Size		Qty

Fluid Data									
Stage/Plug #: 1									
Fluid #	Stage Type	Fluid Name	Qty	Qty uom	Mixing Density lbm/gal	Yield ft <sup>3</sup> /sk	Mix Fluid Gal/sk	Rate bbl/min	Total Mix Fluid Gal/sk
1	H2O SPACER		10.00	bbl	8.33	.0	.0	.0	
2	MUD FLUSH III	MUD FLUSH III - SBM (528788)	20.00	bbl	8.4	.0	.0	.0	
3	H2O SPACER		10.00	bbl	8.33	.0	.0	.0	
4	Lead Cement	ECONOCEM (TM) SYSTEM (452992)	275.0	sacks	11.	2.75	16.31		
5	Tail Cement	VARICEM (TM) CEMENT (452009)	400.0	sacks	13.5	1.49	6.49	6.0	
6	KCL Displacement		84.30	bbl	8.4	.0	.0	.0	
Calculated Values		Pressures		Volumes					
Displacement	84.3	Shut In: Instant		Lost Returns	No	Cement Slurry	240.8	Pad	
Top Of Cement		5 Min		Cement Returns	No	Actual Displacement	84.3	Treatment	
Frac Gradient		15 Min		Spacers		Load and Breakdown		Total Job	
Rates									
Circulating		Mixing	7	Displacement	8	Avg. Job	7		
Cement Left In Pipe	Amount	45 ft	Reason	Shoe Joint					
Frac Ring # 1 @	ID	Frac ring # 2 @	ID	Frac Ring # 3 @	ID	Frac Ring # 4 @	ID		
The Information Stated Herein Is Correct				Customer Representative Signature					

*The Road to Excellence Starts with Safety*

Sold To #: 344919	Ship To #: 2755772	Quote #:	Sales Order #: 7057975
Customer: LARAMIE ENERGY II LLC EBUSINESS	Customer Rep: CLAUSSEN, KELLY		
Well Name: KNOX	Well #: 03-07C	API/UWI #:	
Field: GARDN VALLEY	City (SAP): RIFLE	County/Parish: Garfield	State: Colorado
Legal Description:			
Lat:	Long:		
Contractor: LARAMIE II	Rig/Platform Name/Num: PRECISISON 706		
Job Purpose: Cement Production Casing	Ticket Amount:		
Well Type: Development Well	Job Type: Cement Production Casing		
Sales Person: METLI, MARSHALL	Srvc Supervisor: NELSON, RYAN	MBU ID Emp #: 386514	

Activity Description	Date/Time	Cht #	Rate bbl/min	Volume Bbl		Pressure psig		Comments
				Stage	Total	Tubing	Casing	
Call Out	12/15/2009 02:00							
Arrive At Loc	12/15/2009 04:00							Rig running casing
Pre-Rig Up Safety Meeting	12/15/2009 08:30							
Rig-Up Equipment	12/15/2009 08:45							
Pre-Job Safety Meeting	12/15/2009 10:00							
Start Job	12/15/2009 10:15							TD-5495' TP-5485' SJ-45' CASING 4 1/2" 11.6# HOLE 7 7/8" SURFACE SET AT 850'
Other	12/15/2009 10:17			1			140.0	
Test Lines	12/15/2009 10:19						4500.0	
Pump Spacer 1	12/15/2009 10:22		4	10			266.0	Fresh Water
Pump Spacer 2	12/15/2009 10:27		4	20			266.0	Mud Flush
Pump Spacer 1	12/15/2009 10:32		4	10			350.0	Fresh water
Pump Lead Cement	12/15/2009 10:34		7	134.7			530.0	275 sks 11 ppg 2.75 yield 16.31 gal/sk
Pump Tail Cement	12/15/2009 10:52		7	106.1			340.0	400 sks 13.5 ppg 1.49 yield 6.49 gal/sk
Shutdown	12/15/2009 11:10							
Clean Lines	12/15/2009 11:13							
Drop Top Plug	12/15/2009 11:14							
Pump Displacement	12/15/2009 11:14		8	84.3			1070.0	3# be-6, 75# KCL per 10BBI

Sold To # : 344919

Ship To # :2755772

Quote # :

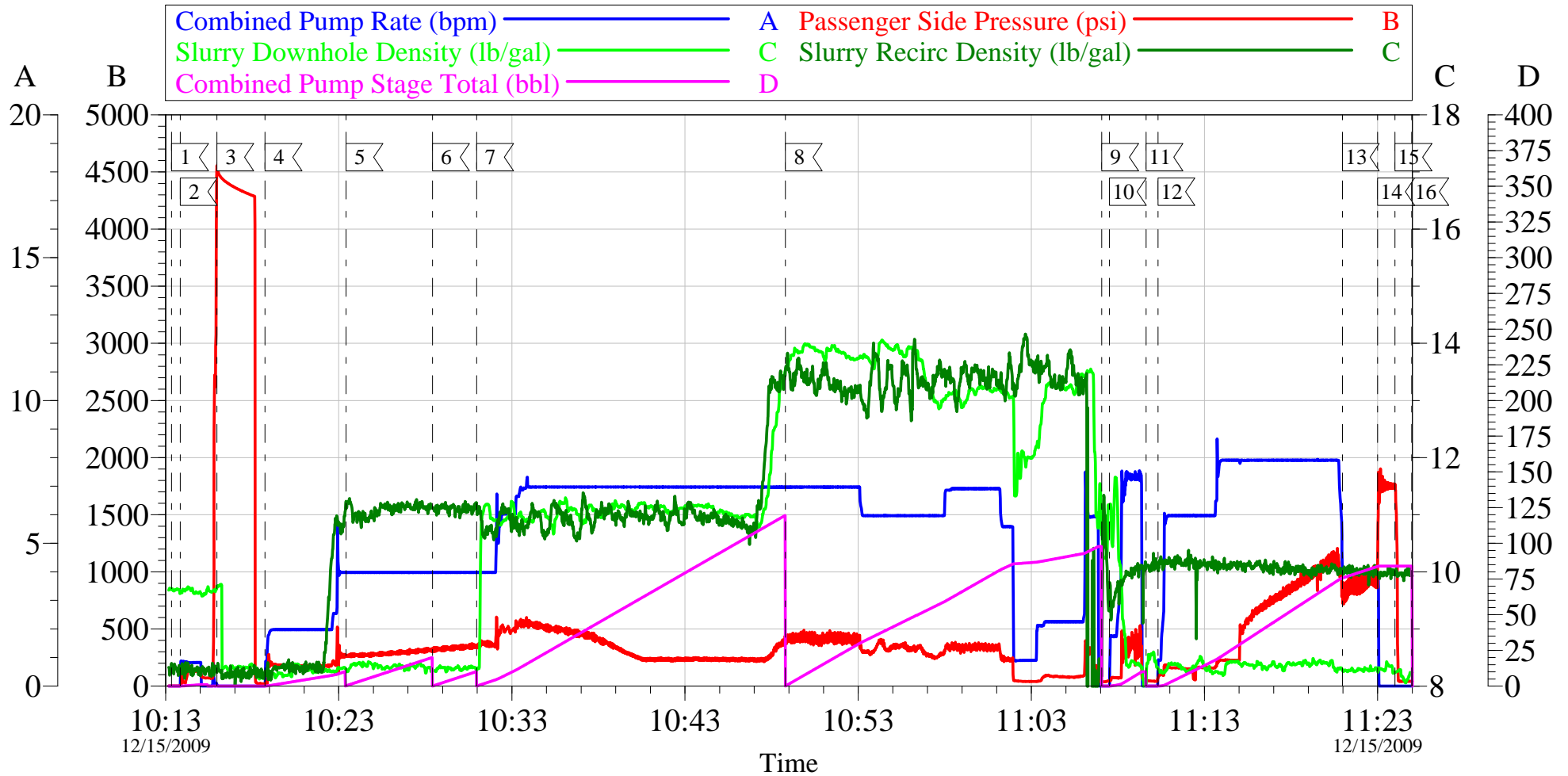
Sales Order # : 7057975

SUMMIT Version: 7.20.130

Tuesday, December 15, 2009 11:59:00

Activity Description	Date/Time	Cht #	Rate bbl/ min	Volume Bbl		Pressure psig		Comments
				Stage	Total	Tubing	Casing	
Slow Rate	12/15/2009 11:24		4	74			1000. 0	
Bump Plug	12/15/2009 11:26		4	84.3			1700. 0	
Check Floats	12/15/2009 11:27							Floats held
End Job	12/15/2009 11:30							Well circulated prior to the job. Pipe static during job. Thank you for using Halliburton-Ryan Nelson & Crew

# Laramie II 4.5 Inch Production



Customer:	Laramie II	Job Date:	15-Dec-2009	Sales Order #:	7057975
Well Description:	Knox 03-07C	Job Type:	Production	ADC Used?:	Yes
Co Rep:	Kelly Claussen	Cement Supervisor:	Ryan Nelson	Elite#/Operator:	1/Adam Anderson