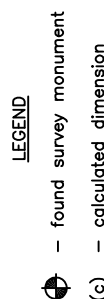
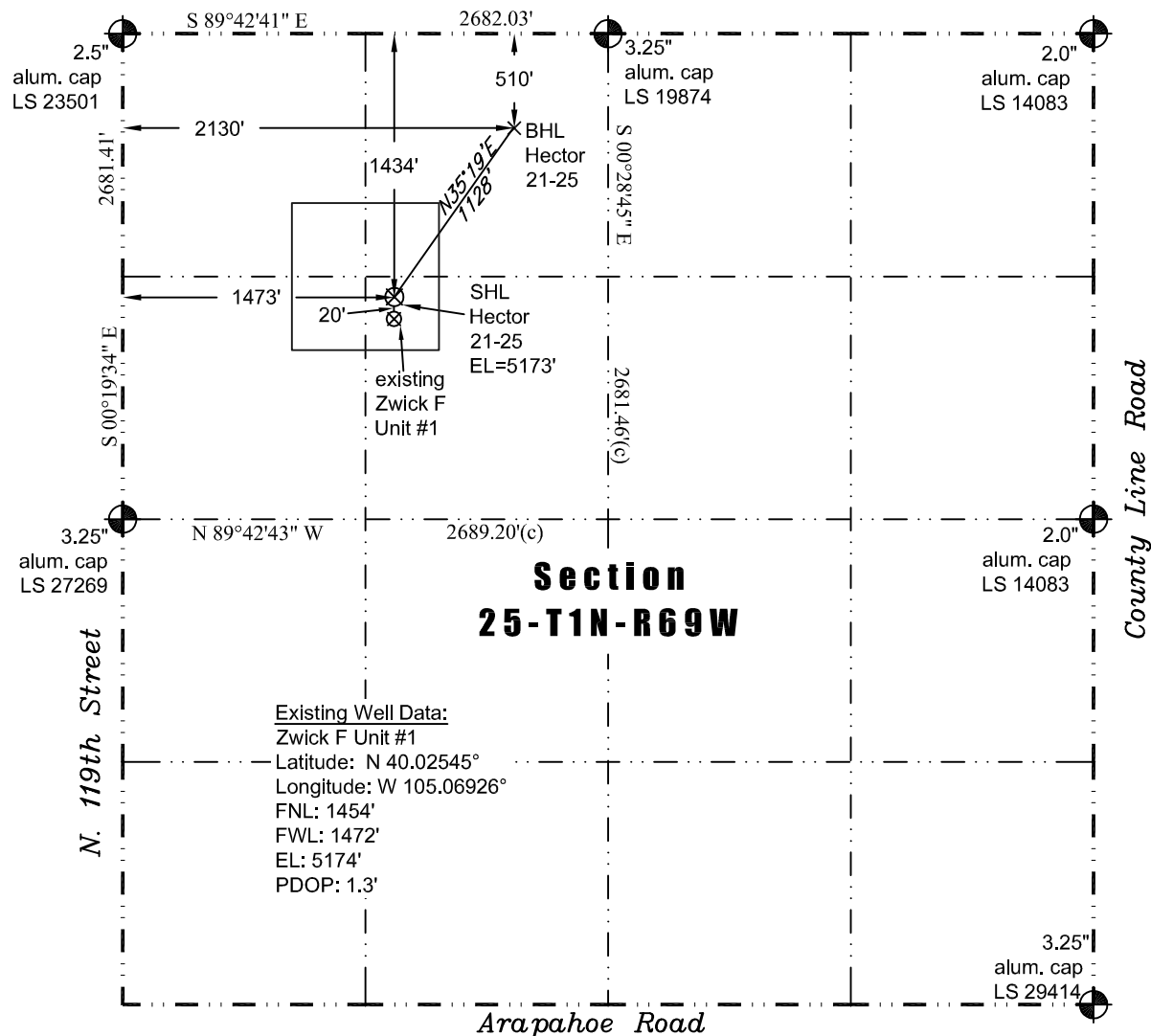


PLS Group, LLC  
109 Coronado Ct. - Bldg. 7  
Fort Collins, Colorado 80525  
P. 970-282-3446 Fx. 970-377-6767

## WELL LOCATION CERTIFICATE

*THIS MAP DOES NOT REPRESENT A BOUNDARY SURVEY*



In accordance with a request from Jennifer Lind of EnCana Oil & Gas (USA) Inc., PLS Group, LLC. has determined the location of the **Hector 21-25** well site to be SHL: 1434' FNL and 1473' FWL, (BHL 510' FNL and 2130' FWL) as measured at ninety (90) degrees from the section lines of Section 25, Township 1 North, Range 69 West of the 6th Principal Meridian, Boulder County, Colorado.

### Proposed Surface Hole Data:

Latitude: N 40.02550° (BHL 40.02802°)  
Longitude: W 105.06926° (BHL 105.06691°)  
PDOP: 1.7

### Nearest:

|  |                                      |
|--|--------------------------------------|
| Building 958' southwest                  | Above Ground Utility 1008' southwest |
| Public Road 1460' west                   | Railroad 4590' east                  |
| Property Line 716' southeast             | Well Window: SHL is 270' inside      |
| Existing Well: Zwick F Unit #1 20' south |                                      |

### Notes:

- 1) Bearings based on NAD 83 Colorado North State Plane Coordinates using RTK GPS observations taken 8/31/09 by operator Jay Knutson.
- 2) Conversion factor to ground (1.00027939717)
- 3) Elevations based on NAVD 88 GPS heights and Geoid 2003 corrections.
- 4) See improvement map for visible improvements within 400 feet.
- 5) The location falls in an agricultural field.

**NOTICE:** According to Colorado law you must commence any legal action based upon any defect in this W.L.C. within three years after you first discover such defect. In no event may any action based upon any defect in this W.L.C. be commenced more than ten years from this said date of the certification shown hereon.

I hereby certify that this Well Location Certificate was prepared by me or under my direct supervision on 8/30/2011 for and on behalf of EnCana Oil & Gas (USA) Inc. That it is not a Land Survey Plat or an Improvement Survey Plat and that it is not to be relied upon for establishment of fences, buildings, or other future improvement lines.

John Robert McGehee LS#38219  
Well: Hector 21-25 WLC